

2005 CATALOG

OMNI  **MOUNT** [®] **PRO**

Welcome to the New OmniMount Pro Catalog.

After almost 30 years of providing high performance mounts to the Professional and Commercial Audio industries, OmniMount Pro has made a commitment to our counterparts in the Video Industry. We began a few years ago by bringing a limited selection of innovative, price-competitive, universal mounts to the Flat Panel Display market. These mounts originated in our Consumer Retail group, but were designed and engineered to a higher standard than would be expected for a typical consumer product.

Within a very short time, the fast-reacting Consumer Retail market was taking on the OmniMount video products quicker than anyone expected, resulting in the company doubling its business in each of the following three years. The Commercial market took a bit longer to react, but momentum has built over time. The highly successful introduction of our PM universal projector mounts and Fastback flat panel mounts has rapidly grown the Pro side of our business, requiring new solutions to meet the increased demand.

The result is the development of a new line of Pro products that directly address the needs of the Commercial and Professional Video markets. The products in this catalog have been specifically created for the installers, designers and integrators in the Commercial Video and Audio markets. In addition to our very successful projector and flat panel wall mounts, we are bringing to market a large number of new mounts that offer solutions to your most frequent problems and applications. In keeping with this new focus, we have developed a new set of product model numbers for the Pro products, which more clearly defines their product identities.

In addition, the Professional OmniMount products, which have been the perennial problem solvers for the installed audio business, have also undergone a major revision. We have streamlined the number of models by more than 70%, making it easier to understand and order these products without reducing their functionality or capability. We now have six models of Professional OmniMounts in five different sizes with a full range of accessories to fit most mounting needs.

All of us at OmniMount Pro are looking forward to being key players in the Professional/Commercial Video and Audio Industry.

Scott Berdell
General Manager
OmniMount Professional

CONTENTS

3 SECTION ONE

- 4 SMALL : UNIVERSAL FLAT PANEL MOUNTS
- 6 MEDIUM : UNIVERSAL FLAT PANEL MOUNTS
- 9 LARGE : UNIVERSAL FLAT PANEL MOUNTS
- 13 SPECIALTY FLAT PANEL MOUNTS
- 14 ADAPTER PLATES : UNIVERSAL ADAPTER PLATES
- 15 ADAPTER PLATES : DISPLAY SPECIFIC ADAPTER PLATES
- 16 UNIVERSAL PROJECTOR MOUNTS
- 18 TELEVISION MOUNTS
- 20 UNIVERSAL OMNIMOUNTS

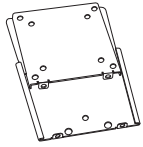
21 SECTION TWO

- 22 PROFESSIONAL OMNIMOUNT SPECIFICATIONS
- 25 PROFESSIONAL OMNIMOUNTS
- 28 PROFESSIONAL OMNIMOUNT ACCESSORIES
- 30 PROFESSIONAL OMNIMOUNT FOOTPRINT
- 31 COMMON PARTS / PLUMBING PIPE CONNECTION

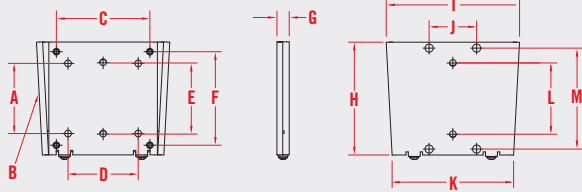
01 PROFESSIONAL PRODUCTS

17FM-F

17 FAST MOUNT FIXED



- Fast install fixed mount. Very low profile: 1/2" (13mm) from wall
- "Hot swap" capable
- Accepts security hardware
- Includes complete mounting hardware kit
- VESA compliant: 75 to 100
- Available in Silver only
- 40 lb. (18.1 kg.) maximum weight capacity

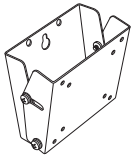


A	2.95"	75.00mm	F	3.94"	100.00mm	K	5.30"	134.62mm
B	2.50"	63.50mm	G	0.50"	13.00mm	L	3.00"	76.20mm
C	3.94"	100.00mm	H	4.87"	123.70mm	M	4.25"	107.95mm
D	2.95"	75.00mm	I	5.60"	142.24mm			
E	3.00"	76.20mm	J	2.00"	50.80mm			

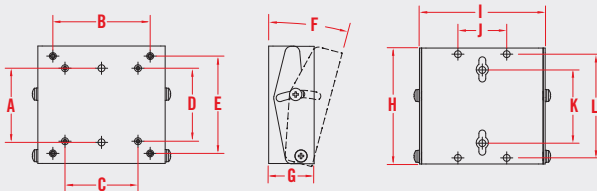
*Release point

17FM-T

17 FAST MOUNT TILT



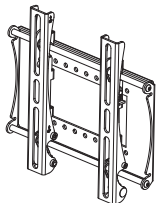
- Fast install invertible tilt mount
- Provides +15° to -5° of tilt for optimum viewing
- May be inverted: +5° to -15°
- Includes complete mounting hardware kit
- VESA compliant: 75 to 100
- Available in Silver only
- 40 lb. (18.1 kg.) maximum weight capacity



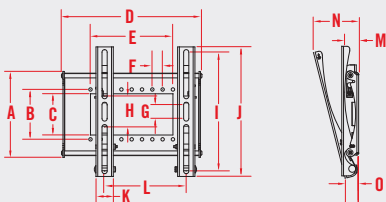
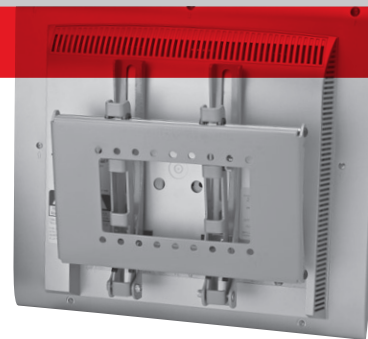
A	3.00"	76.20mm	F	-5°/+15°		K	3.00"	76.20mm
B	3.94"	100.00mm	G	1.84"	46.74mm	L	4.25"	107.95mm
C	2.95"	75.00mm	H	4.75"	120.65mm			
D	2.95"	75.00mm	I	5.16"	131.06mm			
E	3.94"	100.00mm	J	1.92"	48.77mm			

17FBHD-T

17 FASTBACK HD TILT



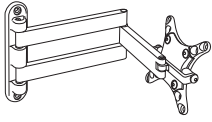
- Fast & easy install low profile tilt mount with Lift n' Lock™ installation
- Tilt (+15° to 0°) and sliding lateral on-wall adjustment
- Locking system for safety and security
- Includes mounting guide and complete hardware kit
- VESA compliant: 75 to 200x200
- Available in Silver only
- 40 lb. (18.1 kg.) maximum weight capacity



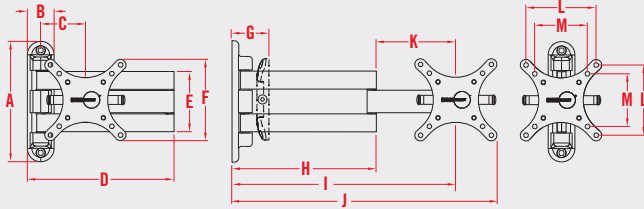
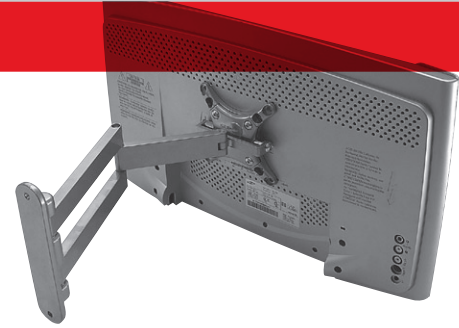
A	6.23"	158.24mm	F	0.80"	20.32mm	K	1.25"	31.75mm
B	3.64"	92.46mm	G	1.10"	27.94mm	L	1.90-8.50"	48.26-215.9mm
C	3.00"	76.20mm	H	2.16"	54.86mm	M	1.51"	38.35mm
D	10.25"	260.35mm	I	8.75"	222.25mm	N	2.90"	73.66mm
E	6.00"	152.40mm	J	9.45"	240.03mm	O	1.16"	29.46mm

17ARM

17 ARTICULATED RETRACTABLE MOUNT



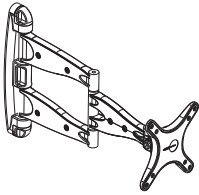
- Flat panel cantilever mount allows wide array of viewing angles
- Optimum viewing: swivel, pan, tilt and articulation
 - Low profile design: folds flat against wall
 - Includes complete mounting hardware kit
 - VESA compliant: 75 to 100
 - Available in Silver only
 - 30 lb. (13.6 kg.) maximum weight capacity



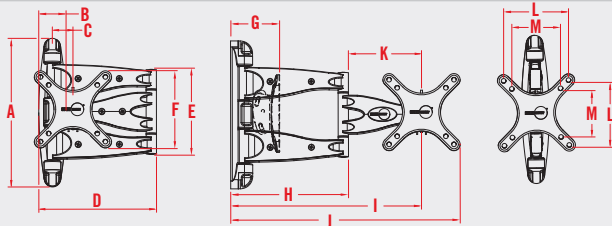
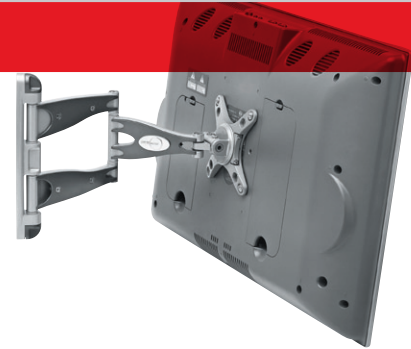
A	6.75"	171.45mm	F	4.60"	116.84mm	K	4.99"	126.75mm
B	1.51"	38.35mm	G	1.84"	46.74mm	L	3.94"	100.00mm
C	2.48"	62.99mm	H	7.47"	189.74mm	M	2.95"	75.00mm
D	8.50"	215.90mm	I	12.50"	317.50mm			
E	3.36"	85.34mm	J	13.25"	336.55mm			

17HDARM

17 HD ARTICULATED RETRACTABLE MOUNT



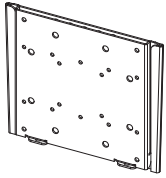
- All features of the 17ARM plus:
- Lift n' Lock™ installation
 - Portrait or landscape positioning
 - Integrated cable management system
 - VESA compliant: 75 to 100
 - Available in Silver only
 - 40 lb. (18.1 kg.) maximum weight capacity
- Available 3rd Quarter 2005*



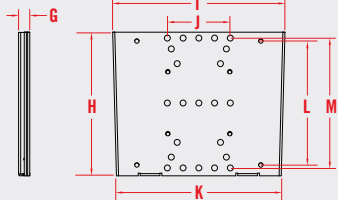
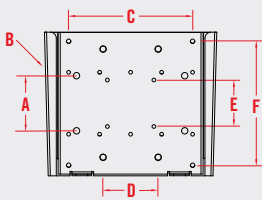
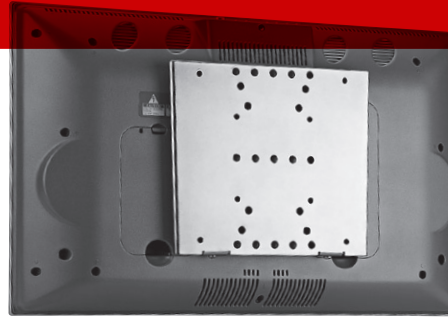
A	9.00"	228.60mm	F	4.69"	119.13mm	K	4.80"	121.92mm
B	1.65"	41.91mm	G	2.40"	60.96mm	L	3.94"	100.00mm
C	1.00"	25.40mm	H	7.00"	177.80mm	M	2.95"	75.00mm
D	7.00"	177.80mm	I	11.50"	292.10mm			
E	5.10"	129.54mm	J	13.75"	349.25mm			

37FM-F

37 FAST MOUNT FIXED



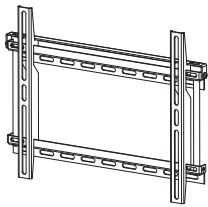
- Fast install fixed mount. Very low profile: 0.75" (19mm) from wall
- "Hot swap" capable
 - Includes security hardware
 - Includes complete mounting hardware kit
 - VESA compliant: 75 to 200x200
 - Available in Silver only
 - 175 lb. (79.4 kg.) maximum weight capacity
- Available 3rd Quarter 2005



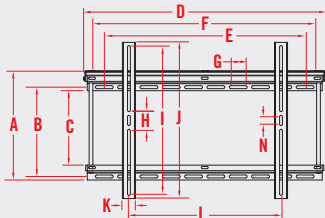
A	3.94"	100.00mm	F	7.88"	200.00mm	K	10.25"	260.35mm
B	7.50"	190.50mm	G	0.77"	19.56mm	L	5.00"	127.00mm
C	7.88"	200.00mm	H	9.13"	231.78mm	M	8.25"	209.55mm
D	3.94"	100.00mm	I	10.81"	274.64mm			
E	2.95"	74.93mm	J	4.00"	101.60mm			

37FB-F

37 FASTBACK FIXED



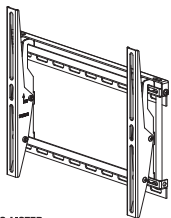
- Fast & easy low profile fixed mount with Lift n' Lock™ installation
- Sliding lateral on-wall adjustment
 - Mounts to any stud separation up to 17" (432mm)
 - Includes complete security mounting hardware kit
 - VESA compliant: 75 to 200x200
 - Available in Silver and Black
 - 80 lb. (36.3 kg.) maximum weight capacity



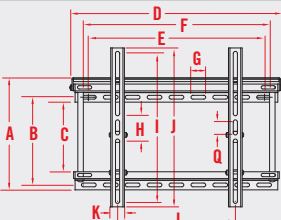
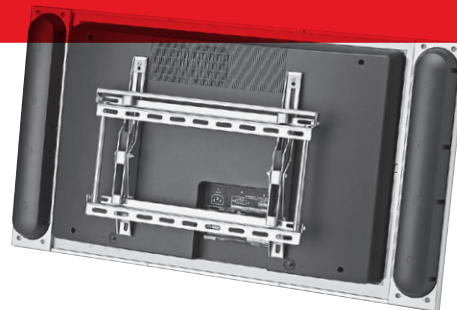
A	10.25"	260.35mm	F	17.00"	431.80mm	K	1.27"	32.26mm
B	8.00"	203.20mm	G	1.06"	26.92mm	L	1.27-15.75"	32.3-400.1mm
C	6.25"	158.75mm	H	2.50"	63.50mm	M	1.63"	41.40mm
D	19.25"	488.95mm	I	13.50"	342.90mm	N	1.06"	26.92mm
E	16.85"	427.99mm	J	14.50"	368.30mm			

37FB-T

37 FASTBACK TILT



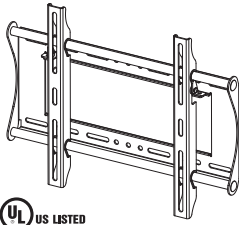
- Fast & easy low profile tilt mount with Lift n' Lock™ installation
- Tilt (+15° to -5°) and sliding lateral on-wall adjustment
 - Mounts to any stud separation up to 17" (432mm)
 - Includes complete security mounting hardware kit
 - VESA compliant: 75 to 200x200
 - Available in Silver and Black
 - 80 lb. (36.3 kg.) maximum weight capacity



A	10.25"	260.35mm	G	1.06"	26.92mm	M	1.93"	49.02mm
B	8.00"	203.20mm	H	2.50"	63.50mm	N	5.28"	134.11mm
C	6.25"	158.75mm	I	13.50"	342.90mm	O	1.50"	38.10mm
D	19.25"	488.95mm	J	14.50"	368.30mm	P	1.36"	34.54mm
E	16.85"	427.99mm	K	1.28"	32.51mm	Q	1.06"	26.92mm
F	17.00"	431.80mm	L	1.65-15.5"	41.9-393.7mm			

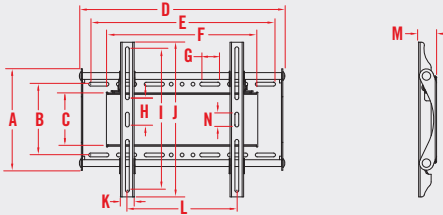
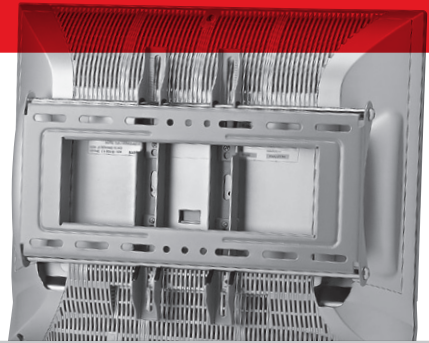
37FBHD-F

37 FASTBACK HD FIXED



Fast & easy low profile fixed mount with Lift n' Lock™ installation

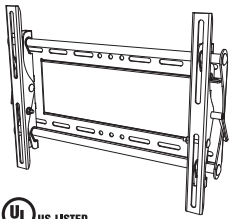
- Sliding lateral on-wall adjustment
- Single or double stud wall plate: max 16.8" (427mm) stud separation
- Includes mounting guide, locking system and complete hardware kit
- VESA compliant: 75 to 200x200
- Available in Silver only
- 80 lb. (36.3 kg.) maximum weight capacity



A	9.25"	234.95mm	F	13.75"	349.25mm	K	1.27"	32.26mm
B	6.50"	165.10mm	G	1.50"	38.10mm	L	1.44-15.25"	36.6-387.4mm
C	4.32"	109.73mm	H	3.94"	100.00mm	M	1.64"	41.66mm
D	19.00"	482.60mm	I	12.75"	323.85mm	N	1.33"	33.78mm
E	16.80"	427.00mm	J	14.25"	361.95mm			

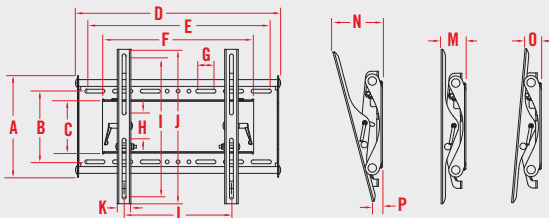
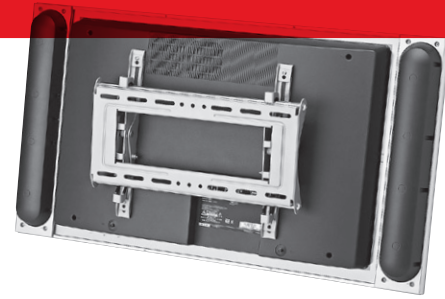
37FBHD-T

37 FASTBACK HD TILT



Fast & easy low profile tilt mount with Lift n' Lock™ installation

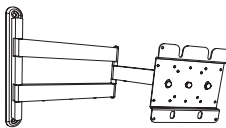
- Tilt (+15° to -5°) and sliding lateral on-wall adjustment
- Single or double stud wall plate: max 16.8" (427mm) stud separation
- Includes mounting guide, locking system and complete hardware kit
- VESA compliant: 75 to 200x200
- Available in Silver only
- 80 lb. (36.3 kg.) maximum weight capacity



A	9.25"	234.95mm	G	1.50"	38.10mm	M	2.25"	57.15mm
B	6.50"	165.10mm	H	3.94"	100.00mm	N	4.55"	115.57mm
C	4.32"	109.73mm	I	12.75"	323.85mm	O	1.51"	38.35mm
D	19.00"	482.60mm	J	14.25"	361.95mm	P	0.94"	23.88mm
E	16.80"	427.00mm	K	1.27"	32.26mm			
F	13.75"	349.25mm	L	2.3-15.9"	58.4-403.9mm			

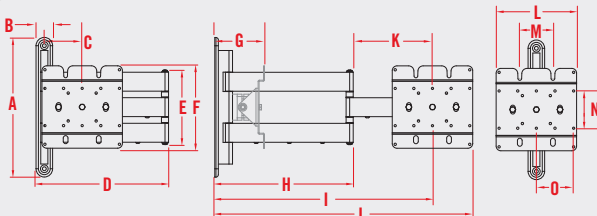
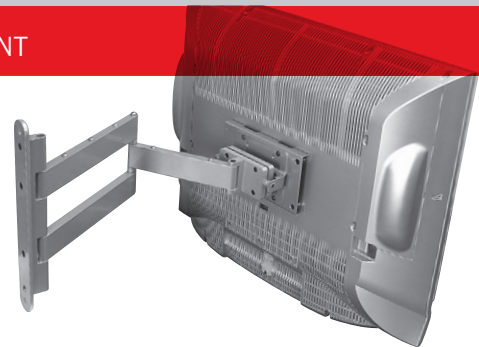
37ARM

37 ARTICULATED RETRACTABLE MOUNT



Flat panel cantilever mount allows wide array of viewing angles

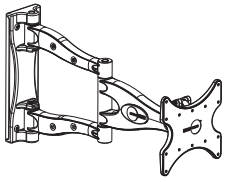
- Optimum viewing: swivel, pan, tilt and articulation
- Low profile design: folds flat against wall
- Includes complete mounting hardware kit
- VESA compliant: 75 to 200x200
- Available in Silver and Black
- 80 lb. (36.3 kg.) maximum weight capacity



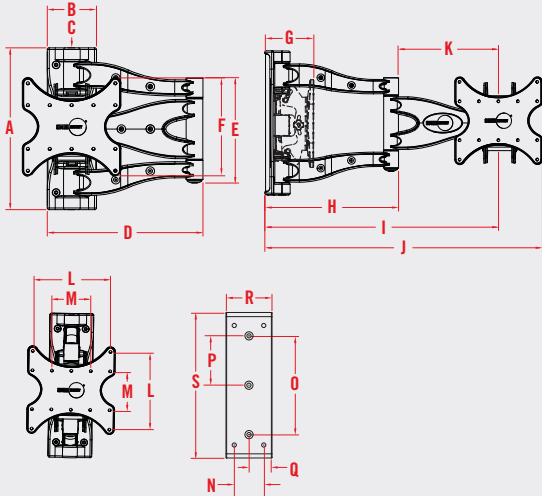
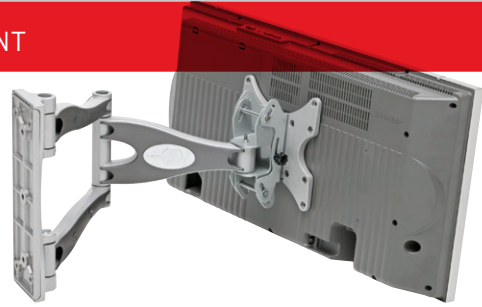
A	14.69"	373.06mm	F	8.88"	225.43mm	K	8.38"	212.73mm
B	1.75"	44.45mm	G	3.50"	88.90mm	L	7.88"	200.00mm
C	3.75"	95.25mm	H	14.38"	365.13mm	M	3.50"	88.90mm
D	14.00"	355.60mm	I	23.13"	587.38mm	N	3.94"	100.00mm
E	7.31"	185.74mm	J	27.13"	688.98mm	O	3.94"	100.00mm

37HDARM

37 HD ARTICULATED RETRACTABLE MOUNT



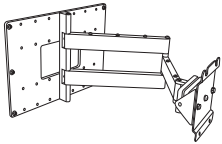
- All features of the 37ARM plus
 - Lift n' Lock™ installation
 - Portrait or landscape positioning
 - Integrated cable management
 - VESA compliant: 100 to 200x200
 - Available in Silver and Black
 - 80 lb. (36.3 kg.) maximum weight capacity
- Available 3rd Quarter 2005*



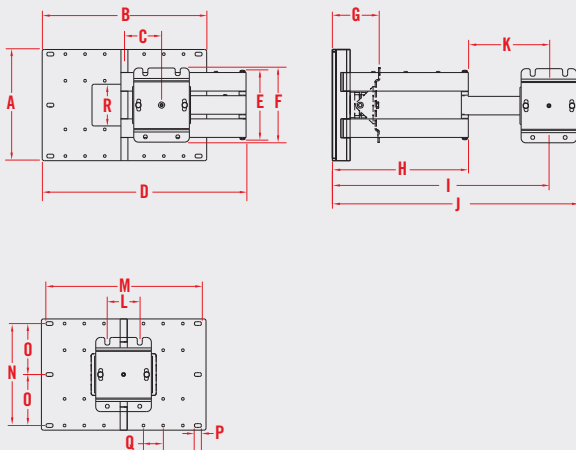
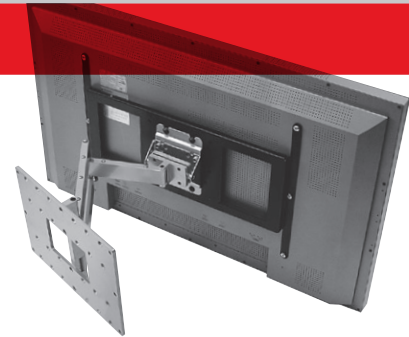
A	14.50"	368.30mm	K	11.25"	285.75mm
B	4.38"	111.13mm	L	7.88"	200.00mm
C	0.00"	0.00mm	M	3.94"	100.00mm
D	14.00"	355.60mm	N	2.80"	71.12mm
E	9.38"	238.13mm	O	9.63"	244.48mm
F	8.88"	225.43mm	P	4.75"	120.65mm
G	4.14"	105.16mm	Q	2.13"	53.98mm
H	13.50"	342.90mm	R	4.43"	112.52mm
I	23.63"	600.08mm	S	14.10"	358.14mm
J	28.00"	711.20mm			

48ARM

48 ARTICULATED RETRACTABLE MOUNT



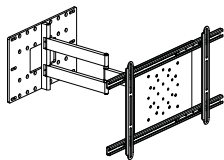
- Flat panel cantilever mount allows wide array of viewing angles
- Mount only – adapter plate required
- Optimum viewing: swivel, pan, tilt and articulation
- Low profile design: folds flat against wall
- Double stud wallplate: max. 17" (432mm) stud separation
- Includes complete wall mounting hardware kit
- Available in Silver and Black
- 125 lb. (56.7 kg.) maximum weight capacity



A	12.00"	304.80mm	J	26.50"	673.10mm
B	18.38"	466.73mm	K	8.25"	209.55mm
C	3.88"	98.55mm	L	3.50"	88.90mm
D	variable	variable	M	17.00"	432.00mm
E	7.50"	190.50mm	N	11.00"	279.40mm
F	8.00"	203.20mm	O	5.50"	139.70mm
G	4.40"	111.76mm	P	1.00"	25.40mm
H	14.75"	374.65mm	Q	2.00"	50.80mm
I	23.75"	603.25mm	R	4.50"	114.30mm

48ARMUA

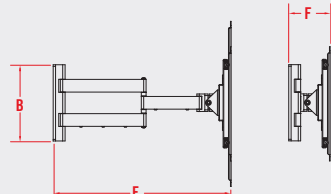
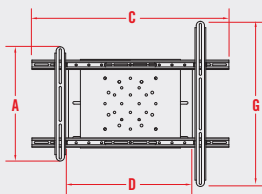
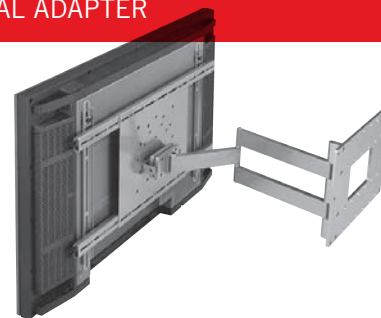
48 ARTICULATED RETRACTABLE MOUNT UNIVERSAL ADAPTER



Complete assembly of 48ARM with 48UAA-A universal adapter plate.

- Low profile design: folds flat against wall
- Double stud wall plate: max 17" (432mm) stud separation
- Includes complete wall and flat panel mounting hardware kit
- VESA compliant: 100 to 200x200
- Available in Silver and Black
- 125 lb. (56.7 kg.) maximum weight capacity

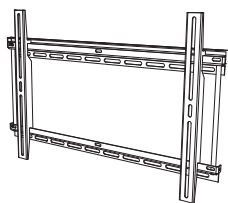
For more details see specific models



A	18.00"	457.20mm	F	5.70"	144.78mm
B	12.00"	304.80mm	G	26.00"	660.40mm
C	31.00"	787.40mm			
D	18.30"	464.82mm			
E	25.50"	647.70mm			

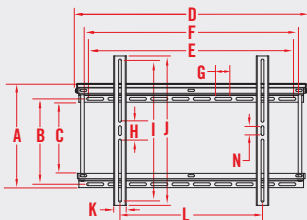
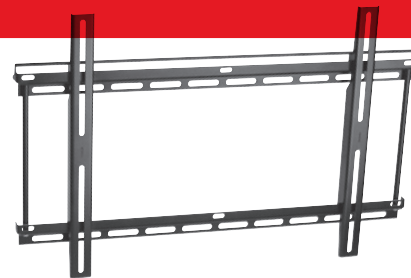
54FB-F

54 FASTBACK FIXED



Fast & easy low profile fixed mount with Lift n' Lock™ installation

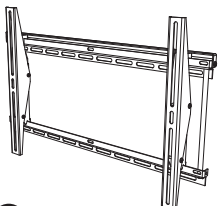
- Sliding lateral on-wall adjustment
- Mounts to any stud separation up to 28.75" (730mm)
- Includes complete security mounting hardware kit
- VESA compliant: 75 to 200x200
- Available in Silver and Black
- 175 lb. (79.4 kg.) maximum weight capacity



A	14.75"	374.65mm	F	30.00"	762.00mm	K	1.78"	45.21mm
B	12.00"	304.80mm	G	2.05"	52.07mm	L	1.77-28.25"	45.0-717.6mm
C	9.90"	251.46mm	H	2.78"	70.61mm	M	1.75"	44.45mm
D	32.50"	825.50mm	I	19.75"	501.65mm	N	1.07"	27.18"
E	28.75"	730.00mm	J	21.00"	533.40mm			

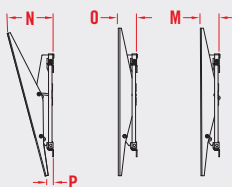
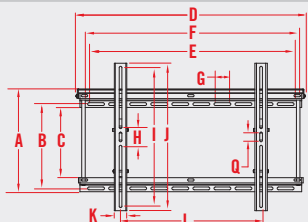
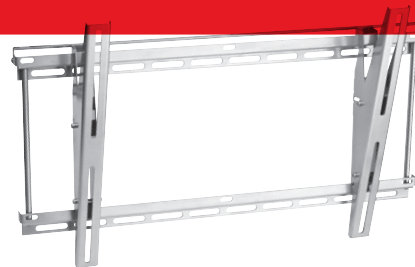
54FB-T

54 FASTBACK TILT



Fast & easy low profile tilt mount with Lift n' Lock™ installation

- Tilt (+15° to 0°) and sliding lateral on-wall adjustment
- Mounts to any stud separation up to 28.75" (730mm)
- Includes complete security mounting hardware kit
- VESA compliant: 75 to 200x200
- Available in Silver and Black
- 175 lb. (79.4 kg.) maximum weight capacity

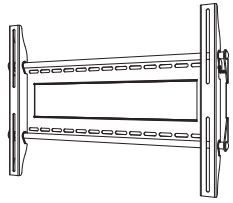


A	14.75"	374.65mm	G	2.05"	52.07mm	M	2.73"	69.34mm
B	12.00"	304.80mm	H	2.78"	70.61mm	N	7.00"	177.80mm
C	9.90"	251.46mm	I	19.75"	501.65mm	O	NA	NA
D	32.50"	825.50mm	J	21.00"	533.40mm	P	1.00"	25.40mm
E	28.75"	730.00mm	K	1.78"	45.21mm	Q	1.07"	27.18mm
F	30.00"	762.00mm	L	2.34-27.75"	59.4-704.9mm			

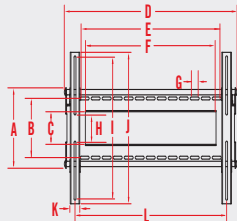
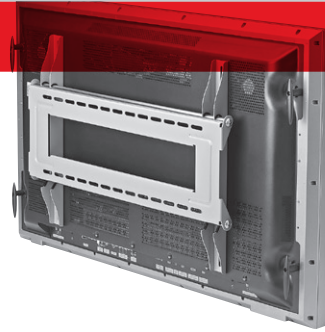
LARGE UNIVERSAL FLAT PANEL MOUNTS

54FBHD-F

54 FASTBACK HD FIXED



- Fast & easy low profile fixed mount with Lift n' Lock™ installation
- Sliding lateral on-wall adjustment
- Double stud wall plate: max 25.5" (648mm) stud separation
- Includes mounting guide, locking system and complete hardware kit
- VESA compliant: 75 to 200x200
- Available in Silver and Black
- 200 lb. (90.7 kg.) maximum weight capacity



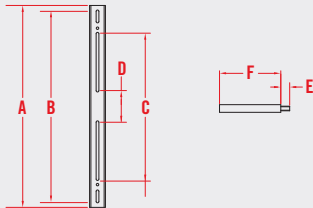
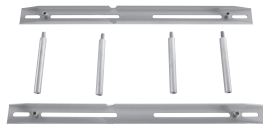
A	11.25"	285.75mm	F	24.00"	609.60mm	K	1.75"	44.45mm
B	8.25"	209.55mm	G	1.25"	31.75mm	L	1.95-27.75"	49.5-704.9mm
C	4.40"	111.76mm	H	3.94"	100.00mm	M	2.40"	60.96mm
D	31.75"	806.45mm	I	19.75"	501.65mm			
E	25.50"	648.00mm	J	21.13"	536.70mm			

63HDXT-A

63 EXT KIT

Extends height and width of 54FBHD-F to fit virtually all 63" displays

- Bolts directly to 54 rails
- 11ga. steel construction
- Available in Silver and Black



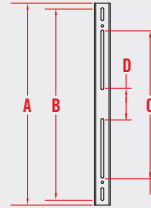
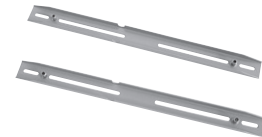
A	25.50"	647.70mm
B	24.00"	609.60mm
C	18.25"	463.55mm
D	3.94"	100.00mm
E	0.80"	20.32mm
F	6.00"	152.40mm

63RK-A

63 RAIL KIT

Extends rail size of 54FB-F and -T to accept nearly all 63" displays

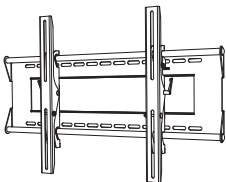
- Bolts directly to 54 rails
- 11ga. steel construction
- Available in Silver and Black



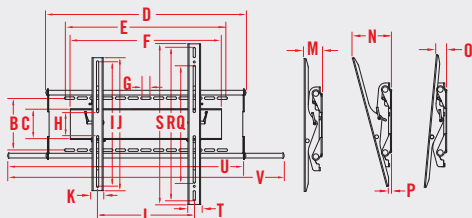
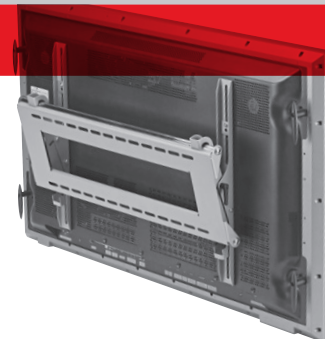
A	25.50"	647.70mm
B	24.00"	609.60mm
C	18.25"	463.55mm
D	3.94"	100.00mm

63FBHD-T

63 FASTBACK HD TILT



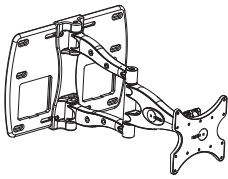
- Fast & easy low profile tilt mount with Lift n' Lock™ installation
- Tilt (+15° to -5°) and sliding lateral on-wall adjustment
- Double stud wall plate: max 25.5" (648mm) stud separation
- Includes mounting guide, locking system and complete hardware kit
- VESA compliant: 75 to 200x200
- Available in Silver and Black
- 200 lb. (90.7 kg.) maximum weight capacity



A	11.25"	285.75mm	G	1.25"	31.75mm	M	2.89"	73.41mm	S	25.50"	647.70mm
B	8.25"	209.55mm	H	3.94"	100.00mm	N	6.00"	152.40mm	T	2.00"	50.80mm
C	4.40"	111.76mm	I	19.75"	501.65mm	O	2.00"	50.80mm	U	37.75"	958.85mm
D	31.75"	806.45mm	J	21.13"	536.70mm	P	1.00"	25.40mm	V	43.75"	1111.25mm
E	25.50"	648.00mm	K	1.75"	44.45mm	Q	18.25"	463.55mm			
F	24.00"	609.60mm	L	2.75-28.25"	69.9-717.6mm	R	24.00"	609.60mm			

54HDARM

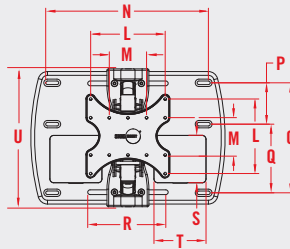
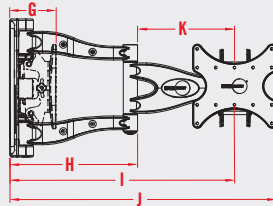
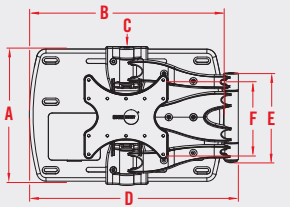
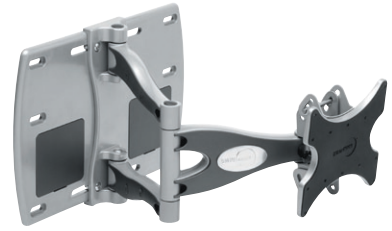
54 HD ARTICULATED RETRACTABLE MOUNT



Flat panel cantilever mount allows wide array of viewing angles

- Lift n' Lock™ installation
- Portrait or landscape positioning
- Integrated cable management system
- Includes complete mounting hardware kit
- VESA compliant: 100 to 200x200
- Available in Silver and Black
- 125 lb. (56.7 kg.) maximum weight capacity

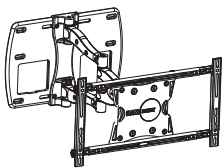
Available 3rd Quarter 2005



A	14.00"	355.6mm	L	7.88"	200.00mm
B	20.50"	520.70mm	M	3.94"	100.00mm
C	0.00"	0.00mm	N	15.0/17.0"	381.0/431.8mm
D	19.94/24.25"	506.5/616.0mm	O	11.63"	295.28mm
E	9.38"	238.13mm	P	4.38"	111.13mm
F	8.88"	225.43mm	Q	7.38"	187.33mm
G	5.30"	134.62mm	R	8.25"	209.55mm
H	13.50"	342.90mm	S	5.00"	127.00mm
I	23.63"	600.08mm	T	5.38"	136.53mm
J	27.50"	698.50mm	U	14.50"	368.30mm
K	11.25"	285.75mm			

54HDARMUA

54 HD ARTICULATED RETRACTABLE MOUNT UNIVERSAL ADAPTER

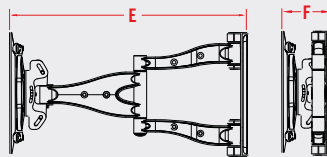
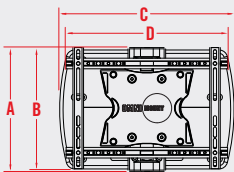
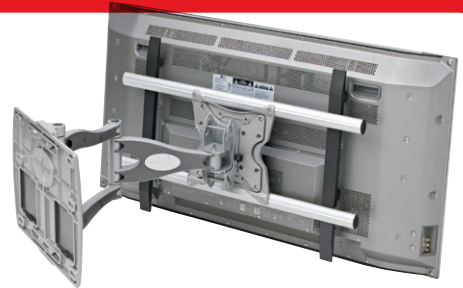


Complete assembly of 54HDARM with 48UCA-A universal adapter plate

- Includes complete wall and panel mounting hardware kit
- VESA compliant: 100 to 200x200
- Available in Silver and Black
- 125 lb. (56.7 kg.) maximum weight capacity

Available 3rd Quarter 2005

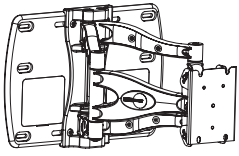
For more details see specific models



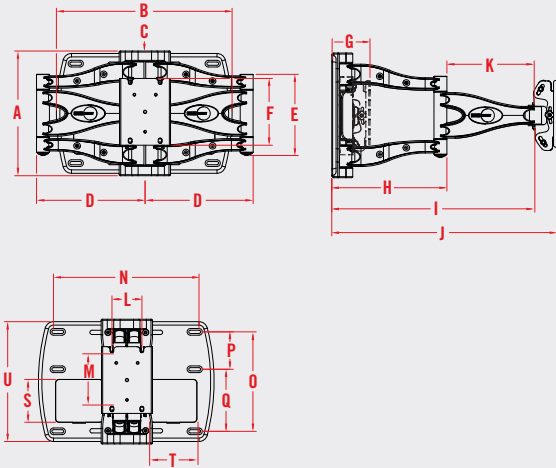
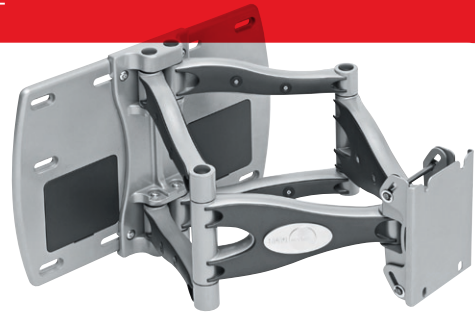
A	14.50"	368.30mm	F	6.80"	172.72mm
B	15.75"	400.05mm			
C	20.50"	520.70mm			
D	24.00"	609.60mm			
E	26.50"	673.10mm			

Preliminary measurements

63HDARM 63 HD ARTICULATED RETRACTABLE MOUNT

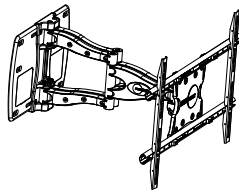


- Flat panel cantilever mount allows wide array of viewing angles
- Mount only – adapter plate required
 - Lift n' Lock™ installation
 - Integrated cable management system
 - Includes complete hardware mounting kit
 - Available in Silver and Black
 - 200 lb. (90.7 kg.) maximum weight capacity
- Available 3rd Quarter 2005*

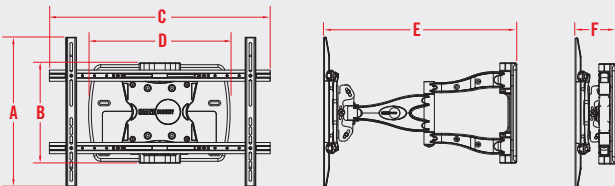


A	14.00"	355.6mm	L	3.50"	88.90mm
B	20.50"	520.70mm	M	6.88"	171.40mm
C	0.00"	0.00mm	N	15.0/17.0"	381.0/431.8mm
D	12.69"	322.26mm	O	11.63"	295.28mm
E	9.38"	238.13mm	P	4.38"	111.13mm
F	7.81"	198.44mm	Q	7.38"	187.33mm
G	4.69"	119.13mm	R	8.25"	209.55mm
H	13.50"	342.90mm	S	5.00"	127.00mm
I	23.63"	600.08mm	T	5.38"	136.53mm
J	26.50"	673.10mm	U	14.50"	368.30mm
K	11.25"	285.75mm			

63HDARMUA 63 HD ARTICULATED RETRACTABLE MOUNT UNIVERSAL ADAPTER



- Complete assembly of 63HDARM with 63UCA-A universal adapter plate
- Includes complete wall and panel mounting hardware kit
 - VESA compliant: 100 to 200x200
 - Available in Silver and Black
 - 200 lb. (90.7 kg.) maximum weight capacity
- Available 3rd Quarter 2005*
For more details see specific models

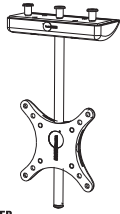


A	21.50"	546.10mm	F	6.20"	157.48mm
B	14.00"	355.60mm			
C	32.00"	812.80mm			
D	20.50"	520.70mm			
E	28.00"	711.20mm			

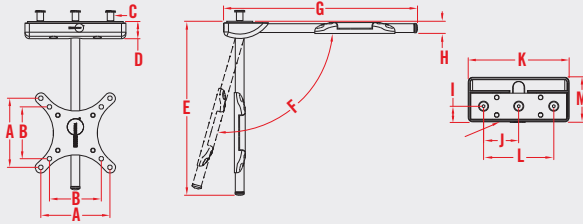
Preliminary measurements

12UCM

12 UNDER CABINET MOUNT



- Flip down under cabinet/ceiling mount for 17" and smaller LCD panels
- LCDs can be flipped up and stored when not in use
- Provides tilt and swivel for optimum viewing
- Includes complete mounting hardware kit
- VESA compliant: 75 to 100
- Available in Silver only
- 40 lb. (18.1 kg.) maximum weight capacity



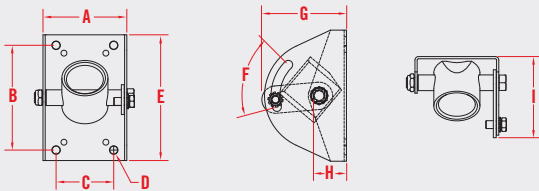
A	3.94"	100.00mm	F	105°	K	5.75"	146.05mm
B	2.95"	75.00mm	G	11.00"	L	4.00"	101.60mm
C	.75-1.0"	19.1-25.4mm	H	0.50"	M	2.56"	65.02mm
D	0.98"	24.89mm	I	0.92"			
E	10.52"	267.21mm	J	2.00"			

TILT-PA

CEILING TILT MOUNT



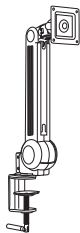
- Mounting adapter for ceiling pipe drops
- Fits standard 1.5" NPT thread
- Provides 45°/15° of tilt
- Available in Black only
- 175 lb. (79.4 kg.) maximum weight capacity



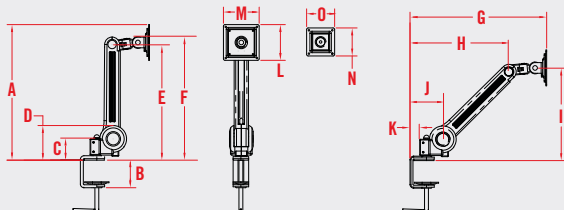
A	4.00"	101.60mm	F	60°			
B	5.00"	127.00mm	G	3.75"			
C	2.75"	69.85mm	H	1.21"			
D	0.38"	9.53mm					
E	6.00"	152.40mm					

DTM-1

DESKTOP MOUNT



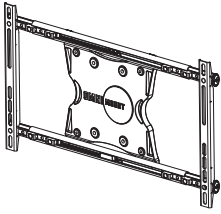
- Versatile high performance mount for desktop LCD monitors
- Clamp style mounting and cable management
- Portrait/landscape page view plus swivel, pan and tilt
- 90° Lift and drop screen placement
- VESA compliant: 75 to 100
- Available in Black only
- 33 lb. (15 kg.) maximum weight capacity



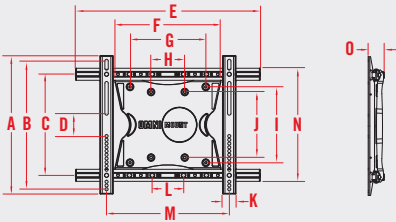
A	16.81"	427.04mm	F	15.63"	396.88mm	K	1.25"	31.75mm
B	3.36"	85.34mm	G	16.43"	417.32mm	L	3.94"	100.00mm
C	2.52"	64.01mm	H	13.65"	346.71mm	M	3.94"	100.00mm
D	3.84"	97.54mm	I	11.70"	297.18mm	N	2.95"	75.00mm
E	15.02"	381.51mm	J	4.88"	124.00mm	O	2.95"	75.00mm

48UCA-A

48 (MED/LG) UNIVERSAL CENTERING ADAPTER



Self-centering, universal adapter plate
 • Fits medium to large displays
 • Available in Silver and Black
 Available 3rd Quarter 2005

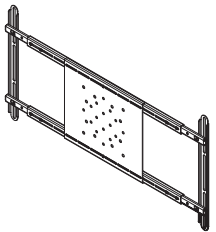


A	15.75"	400.00mm	G	7.88"	200.00mm	M	13.47-26.2"	342.1-665.5mm
B	15.00"	381.00mm	H	3.50"	88.90mm	N	11.97"	304.04mm
C	10.50"	266.70mm	I	7.88"	200.00mm	O	1.80"	45.72mm
D	2.41"	61.21mm	J	6.88"	174.75mm			
E	24.22"	615.19mm	K	1.40"	35.56mm			
F	11.00"	279.40mm	L	3.97-16.5"	100.0-419.1mm			

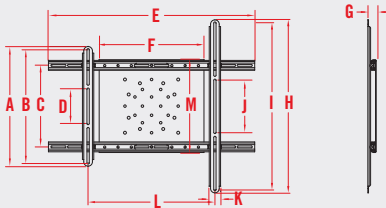
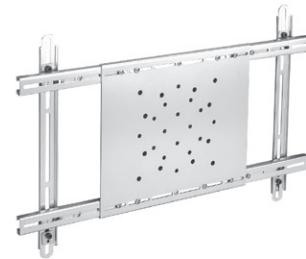
Preliminary measurements

48UAA-A

48 (MED/LG) UNIVERSAL ADJUSTABLE ADAPTER



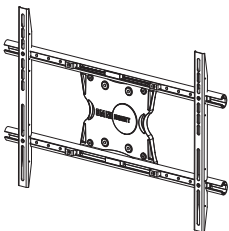
Adjustable universal adapter plate
 • Fits medium to large displays
 • Available in Silver and Black



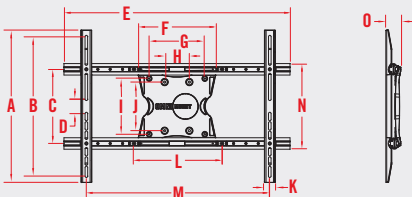
A	18.00"	457.20mm	F	15.75"	400.05mm	K	1.71"	43.43mm
B	17.12"	434.85mm	G	1.30"	33.02mm	L	2.5-38.0"	63.5-965.2mm
C	12.38"	314.33mm	H	26.00"	660.40mm	M	14.13"	385.90mm
D	5.25"	133.35mm	I	25.13"	638.18mm			
E	31.00"	787.40mm	J	7.80"	198.12mm			

63UCA-A

63 (LG/XL) UNIVERSAL CENTERING ADAPTER



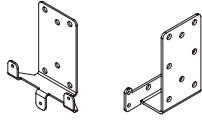
Self-centering, universal adapter plate
 • Fits large to extra large displays
 • Available in Silver and Black
 Available 3rd Quarter 2005



A	21.50"	546.10mm	F	11.00"	279.40mm	K	1.40"	35.56mm
B	20.0"	508.00mm	G	7.88"	200.00mm	L	4.0-20.0"	101.6-508.0mm
C	10.50"	266.70mm	H	3.50"	88.90mm	M	18.33-33.5"	464.8-850.9mm
D	1.75"	44.45mm	I	7.88"	200.00mm	N	12.13"	307.98mm
E	32.00"	812.80mm	J	6.88"	174.63mm	O	2.00"	50.80mm

Preliminary measurements

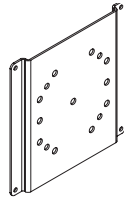
LCD-AD



Small Fixed Adapter Plates

Designed to fit specific flat panel models.
Available in Silver only

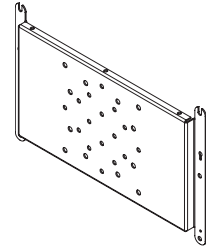
FP-AD



Medium Fixed Adapter Plates

Designed to fit specific flat panel models.
Available in Black only

PL-AD



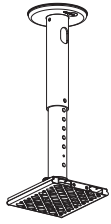
Large Fixed Adapter Plates

Designed to fit specific flat panel models.
Available in Black only

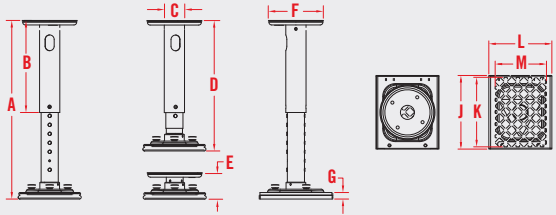
Adapter plates are manufacturer model-specific and may look different from images above. OmniMount carries a line of adapter plates for flat panel displays that do not fit onto the common 75/100/200 VESA or rectangular bolt-hole patterns. Contact OmniMount for a complete list.

PMMICRO

MICRO PROJECTOR MOUNT



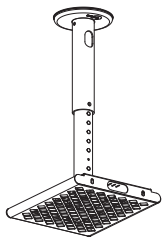
- Slide-together mounting plates for quick install/removal
- Built-in pitch/tilt adjustment controls
- Adjustable extension tube, ceiling mount and dress flange
- Integrated cable management
- Security hardware & accepts padlocks
- Complete dress and mounting hardware kit
- Universal mounting grid – max projector footprint 5.5" x 7.53" (140 x 191mm)
- Available in Silver and Black
- 20 lb. (9.1 kg.) maximum weight capacity



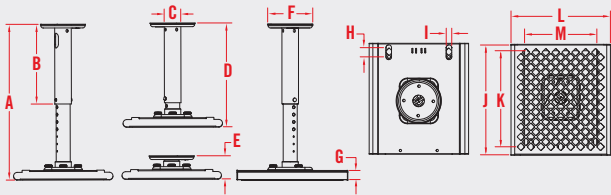
A	19.63"	498.48mm	F	6.25"	158.75mm	K	7.53"	191.26mm
B	10.50"	266.70mm	G	0.75"	19.05mm	L	7.00"	191.00mm
C	2.25"	57.15mm	H	N/A	N/A	M	5.50"	140.00mm
D	12.75"	323.85mm	I	N/A	N/A			
E	2.80"	71.12mm	J	8.20"	208.28mm			

PM1

SMALL PROJECTOR MOUNT



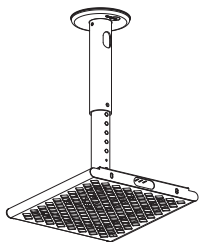
- Slide-together mounting plates for quick install/removal
- Built-in pitch/tilt adjustment controls
- Adjustable extension tube, ceiling mount and dress flange
- Integrated cable management
- Security hardware & accepts padlocks
- Complete dress and mounting hardware kit
- Universal mounting grid – max projector footprint 6.75" x 10.9" (171.5 x 277mm)
- Available in Silver and Black
- 30 lb. (13.6 kg.) maximum weight capacity



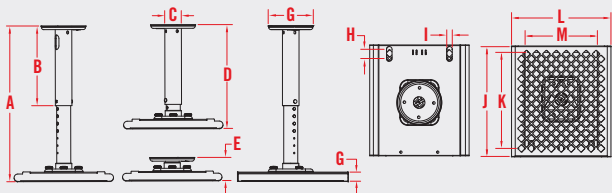
A	20.25"	514.35mm	F	6.25"	158.75mm	K	10.90"	277.00mm
B	10.50"	266.70mm	G	1.40"	35.56mm	L	10.75"	273.05mm
C	2.25"	57.15mm	H	2.00"	50.80mm	M	6.75"	171.50mm
D	13.56"	344.42mm	I	0.75"	19.05mm			
E	3.60"	91.44mm	J	12.44"	315.98mm			

PM2

MID-SIZE PROJECTOR MOUNT



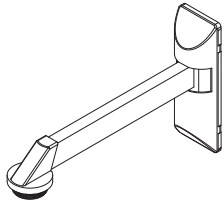
- Slide-together mounting plates for quick install/removal
- Built-in pitch/tilt adjustment controls
- Adjustable extension tube, ceiling mount and dress flange
- Integrated cable management
- Security hardware & accepts padlocks
- Complete dress and mounting hardware kit
- Universal mounting grid – max projector footprint 9.45" x 13.62" (240 x 346mm)
- Available in Silver and Black
- 40 lb. (18.1 kg.) maximum weight capacity



A	20.25"	514.35mm	F	6.25"	158.75mm	K	13.62"	346.00mm
B	10.50"	266.70mm	G	1.50"	38.10mm	L	13.50"	342.90mm
C	2.25"	57.15mm	H	2.00"	50.80mm	M	9.45"	240.00mm
D	13.56"	344.42mm	I	0.75"	19.05mm			
E	3.60"	91.44mm	J	15.13"	384.18mm			

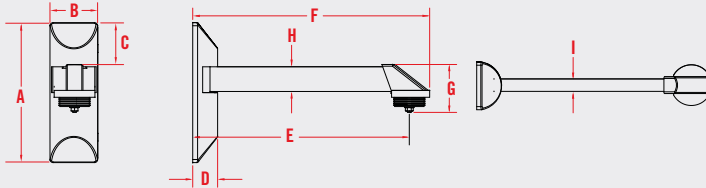
PWM-A

PROJECTOR WALL MOUNT ACCESSORY



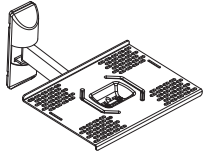
Wall mount arm kit for OmniMount projector mounts

- Includes complete mounting hardware kit
- Available in Silver and Black
- 80 lb. (36.4 kg.) maximum weight capacity

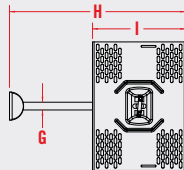
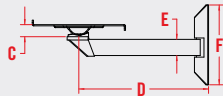
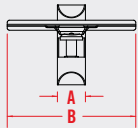


A	9.12"	231.65mm	F	15.85"	402.59mm
B	3.17"	80.52mm	G	3.13"	79.38mm
C	2.90"	73.66mm	H	1.60"	40.64mm
D	1.70"	43.18mm	I	0.82"	20.83mm
E	14.25"	361.95mm			

TVM13 PRO 13" CRT WALL MOUNT

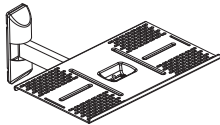


- Commercial grade TV tray wall mount that fits CRTs up to 13"
- Double swivel action and tray tilt (15°)
- Heavy duty 11ga. steel platform
- Black nylon stabilizing strap
- Includes complete mounting hardware kit
- Available in Black only
- 60 lb. (27.2 kg.) maximum weight capacity

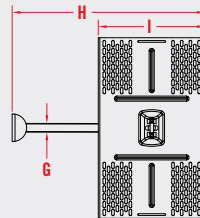
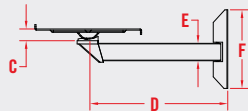
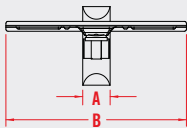
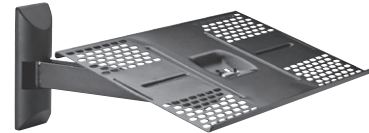


A	3.19"	80.96mm	F	9.06"	230.19mm
B	14.56"	369.89mm	G	0.81"	20.57mm
C	1.38"	34.93mm	H	18.94"	481.01mm
D	14.06"	357.19mm	I	10.13"	257.18mm
E	1.60"	40.64mm			

TVM21 PRO 21" CRT WALL MOUNT

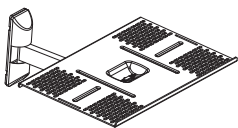


- Commercial grade TV tray wall mount that fits CRTs up to 21"
- Double swivel action and tray tilt (15°)
- Heavy duty 11ga. steel platform
- Black nylon stabilizing strap
- Includes complete mounting hardware kit
- Available in Black only
- 80 lb. (36.2 kg.) maximum weight capacity

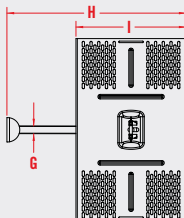
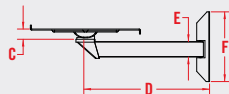
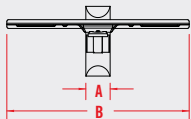
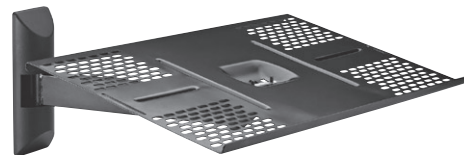


A	3.12"	79.25mm	F	9.08"	230.63mm
B	20.78"	527.81mm	G	0.99"	25.15mm
C	0.95"	24.13mm	H	21.50"	546.10mm
D	15.33"	389.26mm	I	12.25"	311.15mm
E	1.98"	50.29mm			

TVM27 PRO 27" CRT WALL MOUNT



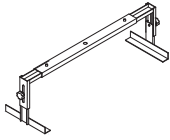
- Commercial grade TV tray wall mount that fits CRTs up to 27"
- Double swivel action and tray tilt (15°)
- Heavy duty 11ga. steel platform
- Black nylon stabilizing strap
- Includes complete mounting hardware kit
- Available in Black only
- 99 lb. (45.0 kg.) maximum weight capacity



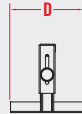
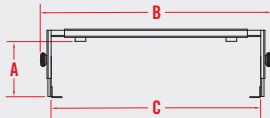
A	3.11"	78.99mm	F	8.88"	225.43mm
B	23.63"	600.8mm	G	0.99"	25.15mm
C	1.00"	25.40mm	H	23.31"	592.14mm
D	16.30"	414.02mm	I	14.38"	365.13mm
E	1.98"	50.29mm			

TVMUCM-A

TVM PRO COMPONENT MOUNT



- Accessory component mount for Pro TVM Wall Mounts
- Add a component (VCR, DVD, cable box) to TV mount
 - Fits all TVM wall mounts
 - Fully adjustable
 - Includes complete hardware mounting kit
 - Width range: 13.5"-18.5" (343mm-470mm)
 - Height range: 2.875"-4.75" (73mm-121mm)
 - Available in Black only
 - 20 lb. (9.1 kg.) weight capacity

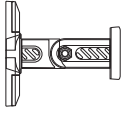


A	2.875-4.75"	73-121mm
B	15.50-20.5"	394-521mm
C	13.5-18.5"	343-470mm
D	5.50"	139.70mm

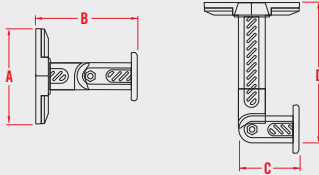
UNIVERSAL OMNIMOUNTS

OMT 2.0

UNIVERSAL OMNIMOUNT 2.0 MOUNT



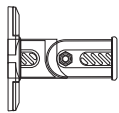
- A multi-configuration mounting solution made of glass-filled nylon
- Maximum flexibility: 360° base rotation, 180° pan, +/-30° tilt
- Includes two extensions that create 3 different lengths
- Includes a T-bar clip for drop ceilings
- Complete mounting hardware kit
- Available in Black and White
- 2 lb. (0.91 kg.) maximum weight capacity



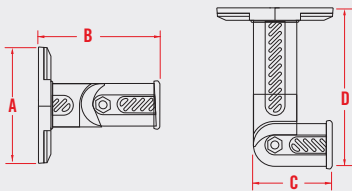
	No Extension		1 Extension		2 Extensions	
A	2 5/8"	66.67mm				
B			2 3/4"	69.85mm	4 3/4"	120.65mm
C	1 3/4"	55.45mm			6 3/4"	171.45mm
D			1 7/8"	47.63mm	3 7/8"	98.43mm
					5 7/8"	149.23mm

OMT 7.0

UNIVERSAL OMNIMOUNT 7.0 MOUNT



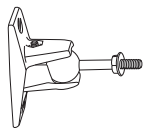
- A multi-configuration mounting solution made of glass-filled nylon
- Maximum flexibility: 360° base rotation, 180° pan, +/-30° tilt
- Includes two extensions that create 3 different lengths
- Includes a T-bar clip for drop ceilings
- Complete mounting hardware kit
- Available in Black and White
- 7 lb. (3.2 kg.) maximum weight capacity



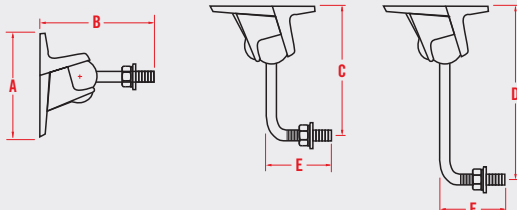
	No Extension		1 Extension		2 Extensions	
A	3 1/2"	88.9mm				
B			3 5/8"	92.08mm	5 7/8"	112.88mm
C	2 3/8"	60.33mm			8 1/8"	206.38mm
D			2 5/8"	66.68mm	4 7/8"	123.83mm
					7 1/8"	180.97mm

OMT 10.0

UNIVERSAL OMNIMOUNT 10.0 MOUNT



- A multi-configuration mounting solution made of stainless steel and aluminum
- Maximum flexibility: 360° base rotation, 180° pan, +/-30° tilt
- Three arm extensions: 3", 5", 8" (76mm, 127mm, 203mm)
- Includes a T-bar clip for drop ceilings
- Complete mounting hardware kit
- Available in Black and White
- 10 lb. (4.5 kg.) maximum weight capacity



A	2 13/16"	71.44mm
B	3"	76.2mm
C	5 1/4"	133.35mm
D	8 1/8"	206.38mm
E	1 3/8"	34.93mm

02 PROFESSIONAL OMNIMOUNTS

WHAT IT'S MADE OF AND HOW IT WORKS

1 : Polymer Ball

This is the “heart” of the OmniMount system. Extremely high tensile strength and a unique compression-set are among the secrets of the proprietary compound used.

3 : Steel Tube

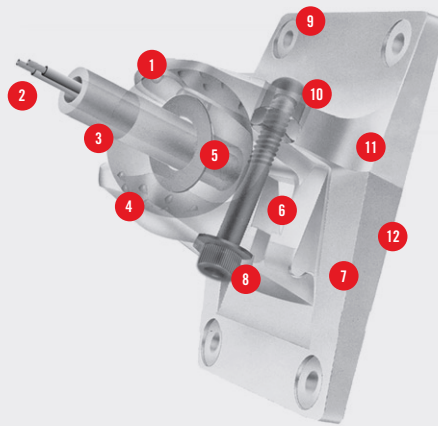
High carbon content with heavy wall thickness for maximum strength.

5 : Triple Bond Lock

The steel capture ring is welded at an angle, then coated with a thermal adhesive. The ball is then molded onto the adhesive-coated ring, creating a thermal, adhesive and mechanical bond between tube and ball.

10 : Force Limiting Cap Nut™

A fixed number of threads is precisely cut into the cap nut. This limits the travel of the tension screw and helps prevent over-tightening of the clamp assembly.



2 : Invisible Wiring

All models feature hollow tubes and a cable port in the back plate to provide a cable management system for routing and concealing wires.

4 : Gripping Teeth

The clamp and jaw assembly has internal “teeth” that bite into the ball during the tightening process. This helps hold the object at the chosen angle of adjustment.

6 : Jaw

Movable part of the Clamp Assembly.

7 : Clamp Plate

When the tension screw is tightened, the jaw compresses the ball against the clamp plate to lock in the chosen angle of adjustment.

8 : Tension Bolt Produced from grade 8 hardened steel.

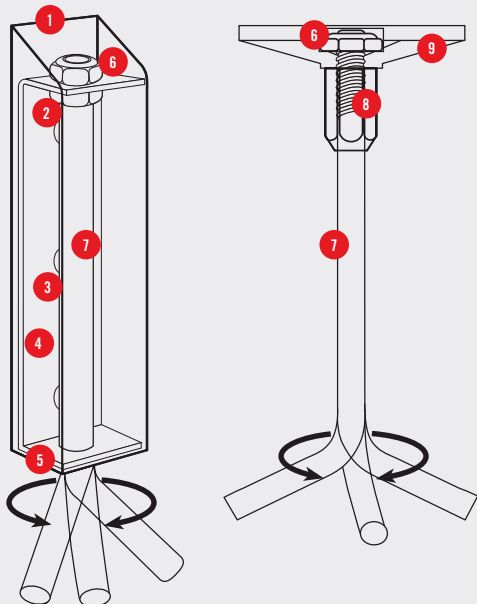
9 : Screw Mounting Holes

11 : Clamp Assembly

Made of die-cast aluminum aircraft alloy, the assembly is comprised of two parts; the jaw and the clamp plate.

12 : Precise Directivity/Targeting

Aiming Point: 180° rotation on wall mounts; 360° on ceiling mounts. Clamp/Jaw Assembly: +/-30° tilt, +/-45° horizontal pan.



1 : Snap-on Plastic Cover

2 : Jam Nut

Locks the rotational position of the tube by tightening it against the top of the wall bracket.

3 : Wall Mounting Fasteners

4 : Wall Mounting Bracket

Formed from cold rolled steel.

5 : Cover Interlock

Boss inside cover interlocks with notch in the wall bracket (four places).

9 : Mounting Plate

Reinforced with four internal structural ribs and die cast from aluminum aircraft alloy. (Used with CA and mounting plate and ST and mounting plate models.)

6 : Lock Nut

A nylon locking ring is formed into the top of the nut. When the threads penetrate this ring, the locking action prevents separation from the mounting plate.

7 : Steel Tube

Able to rotate 360°.

8 : Heavy Steel Shoulder Nut

Locks the rotational position. Objects mounted on model CA with mounting plate create lateral forces that push against the tube. This special shoulder nut prevents these forces from transmitting to the tube threads.

Although all the features indicated in this brochure are common to some models, other models incorporate only some of the features.

CONSIDERATIONS FOR USING AN OMNIMOUNT

The Object You're Mounting

Many objects can be fitted directly to an OmniMount as they contain factory installed threaded inserts, specifically designed and engineered by the manufacturer to support the object when it is mounted. Typical examples include loudspeakers and security cameras.

Even if no factory inserts have been provided, you can still mount an object with an OmniMount. However in this case, you will first need to evaluate the strength and integrity of the object and its materials, to make sure that it is capable of supporting its own weight over time.

What You're Mounting To

You should evaluate the mounting surface to make sure that it provides adequate strength for the intended application. Considerations include mounting to masonry, mounting to studs (wooden or steel), or mounting to dry wall. In addition, appropriate mounting hardware should be used for each type of installation.

Stationary vs. Dynamic Loads

An object mounted to a stationary wall, where no external forces are at play, is an example of a stationary load. In this case, the only load acting upon the object is gravity, so the mounted object will only be subject to its own weight.

However, in a moving vehicle, such as an RV, the object is subject to a dynamic load caused by the movement of the vehicle. The best way to compensate for a dynamic load is to choose an OmniMount capable of supporting a greater weight. With an RV for example, you should double the weight capacity of the selected OmniMount. However with a boat, which is subject to even greater dynamic loads, you should select an OmniMount three sizes larger in capacity.

Selecting an OmniMount

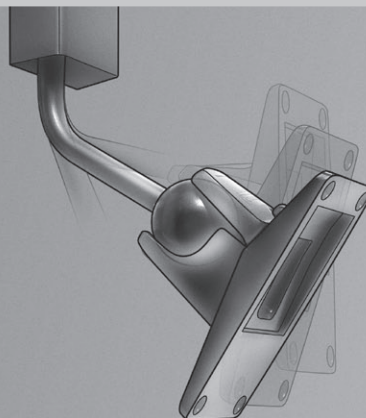
For proper product selection, you'll need to know the following:

- 1) The location of the mounting surfaces:
Will you mount to a wall, ceiling, floor, deck or some other place? Where on the object will the OmniMount be secured; on the top, on the back, on the bottom, or on the side?
- 2) The overall dimensions of the object:
Knowing the height, width and depth of the object will let you more accurately specify an OmniMount to fit the object and application.
- 3) The weight of the object:
This will determine which OmniMount model number to use. The model number of the OmniMount is its weight capacity in pounds. For instance, a 60.0 WA has a maximum weight capacity of 60 lbs. This would be the correct mount to use for an object that weighs 50 lbs. Remember to factor in any dynamic loads when selecting your mount.

Specifying an OmniMount

Where "Universal Mounting Assemblies" are indicated in contract documents, they shall be "as manufactured by OmniMount Systems, Inc." Mounts shall have a carbon steel ballshaft with a polymer ball permanently bonded to one end. Clamp Assemblies and Mounting Plates shall be of aircraft grade aluminum alloy, with remaining structural components fabricated of cold-rolled steel. Fasteners used for assembly shall be of hardened steel – certain cosmetic parts shall be of injection molded plastic. Fastening hardware selected for mounting surfaces shall be of proper size and type to support loads safely – as detailed in OmniMount Systems' product data and installation instructions. Fastening hardware shall be finished as necessary for environmental protection and to color match mounting assemblies.

Omnidirectional adjustability, far beyond the usual pan and tilt. OmniMount assemblies allow infinite angles of adjustment. Most models are available in Black and Navajo White finishes.



APPLICATIONS LIMITED ONLY BY THE IMAGINATION.

The Original Professional OmniMounts known around the world for strength, flexibility, reliability and durability.

Six models and five sizes for loads from 20 lbs. (9 kg.) to 240 lbs. (110 kg.) Designed for loads that require flexible yet easy positioning once mounted. Originally designed for professional loudspeakers, and now used for lighting, signage, cameras and even statuary.

WA, WB and WBX MOUNTS

These groups of mounts are complete mounting kits, requiring only the wall and enclosure attachment hardware for the larger (60.0 and up) mounts. They include the wall bracket and the cover plate as well as the clamp, jaw, tube, ball assembly and the necessary hardware for the clamp and jaw.



WA



WB



WBX

CA, ST AND STX MOUNTS AND ACCESSORIES

These groups of mounts require choosing an accessory that will attach to a surface, pipe or all-thread rod. CA mounting plates, C-clamps, pipe adapters, thread couplers and vibration isolators are accessories that attach to the thread of the OmniMount tube. (See pages 28 and 30.)



CA

Shown here with optional mounting plate



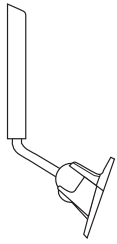
ST



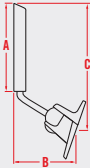
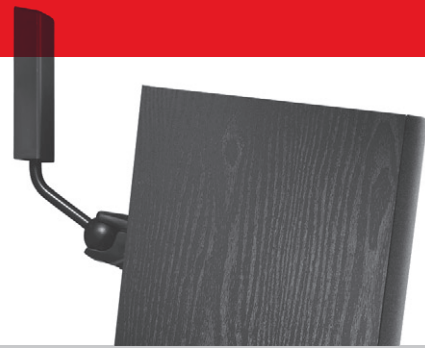
STX

Note: Attachment hardware is included only in the 20.5 and 30.0 series.

WA MOUNTS : WALL TO BACK OF THE ENCLOSURE



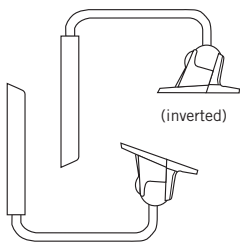
WA mounts provide a more limited range of vertical and horizontal movement, but have less visual impact on the room environment. For enclosures having footings at the back of the enclosure, the WA is the best mounting solution for the widest coverage.



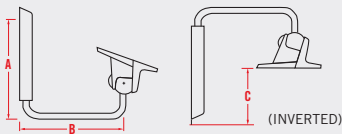
Model number indicates weight capacity of the model in pounds.

	20.5 WA		30.0 WA		60.0 WA		120.0 WA	
A	6 1/4"	158.8mm	6 1/4"	158.8mm	9 1/4"	235.0mm	12"	315.9mm
B	4 5/8"	117.5mm	5 3/8"	136.5mm	6 7/8"	174.6mm	9 1/2"	241.3mm
C	9 1/2"	241.3mm	10"	254.0mm	14"	355.6mm	19"	482.6mm

WB MOUNTS : WALL TO BOTTOM/TOP OF THE ENCLOSURE



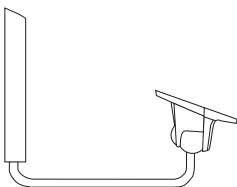
Mounts designed to support enclosures of limited strength as a bottom mount, or virtually invisible mount when mounted to the top of an enclosure. The WB provides a wide range of vertical and horizontal movement to assure necessary coverage.



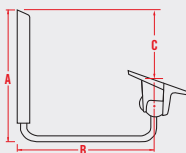
Model number indicates weight capacity of the model in pounds.

	20.5 WB		30.0 WB		60.0 WB		120.0 WB		240.0 WB	
A	7 3/8"	187.3mm	8 1/8"	206.4mm	11"	279.4mm	14 3/4"	347.7mm	Custom	
B	7"	177.8mm	9 3/4"	247.7mm	10 3/4"	273.1mm	15 3/8"	390.5mm	14 1/2"	368.3mm
C	3 1/8"	79.4mm	3 1/8"	79.4mm	4 7/8"	123.8mm	6"	152.4mm	Custom	

WBX MOUNTS : WALL TO BOTTOM/TOP OF THE ENCLOSURE



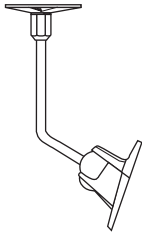
WBX Mounts are WB mounts with a longer reach from the wall. Supporting tube is approximately 25% longer and 25% larger in diameter than the WB. Used for larger enclosures needing more rotation for proper coverage.



Model number indicates weight capacity of the model in pounds.

	30.0 WBX		60.0 WBX		120.0 WBX		240.0 WBX	
A	14"	355.6mm	14"	355.6mm	14 3/4"	347.7mm	20 3/8"	517.5mm
B	14 3/4"	374.7mm	18"	457.2mm	18 5/8"	473.1mm	24"	609.6mm
C	8"	200.3mm	7"	177.8mm	4 3/4"	120.7mm	3"	76.2mm

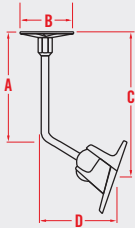
CA MOUNTS : CEILING TO BACK OF THE ENCLOSURE



CA mounts are designed to attach to the back of an enclosure, then to the ceiling or any other horizontal surface. With the accessories offered, the mount can be used almost anywhere and will provide 360° of horizontal coverage and up to 90° of vertical coverage.



Shown with optional mounting plate.

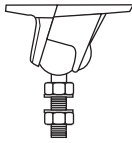


Shown with optional mounting plate.

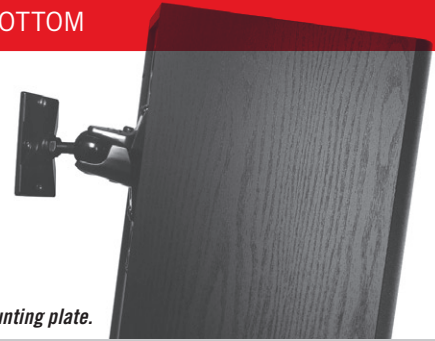
Model number indicates weight capacity of the model in pounds.

	20.5 CA		30.0 CA		60.0 CA		120.0 CA	
A	6.25"	158.75mm	6.75"	171.45mm	9.00"	228.60mm	13.00"	330.20mm
B	3.125"	79.38mm	4.25"	107.95mm	4.25"	107.95mm	6.75"	171.45mm
C	8.75"	222.25mm	9.25"	234.95mm	13.25"	336.55mm	18.25"	463.55mm
D	4.38"	111.13mm	5.25"	133.35mm	7.00"	177.80mm	9.00"	228.60mm

ST MOUNTS : CEILING/WALL/FLOOR TO TOP/BACK/SIDE/BOTTOM

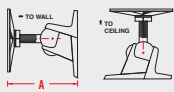


The ST (and STX) Mounts are the most flexible of the Professional OmniMounts and are extraordinary problem solvers. If the enclosure is strong enough, ST and STX mounts can be attached to any surface and provide a strong, flexible mount to provide coverage under the most challenging circumstances.

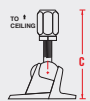


Shown with optional mounting plate.

ST-MP
ST WITH OPTIONAL MOUNTING PLATE



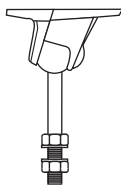
ST-PA
ST WITH OPTIONAL PIPE ADAPTER



Model number indicates weight capacity of the model in pounds.

	20.5 ST		30.0 ST		60.0 ST		120.0 ST		240.0 ST	
A	3 7/8"	98.4mm	4 5/8"	117.5mm	6 1/8"	155.8mm	7"	177.8mm	11 1/4"	285.8mm
B	3 7/8"	98.4mm	4 1/2"	114.3mm	6"	152.4mm	7"	177.8mm	10 3/8"	263.5mm
C	4 3/4"	120.7mm	5 3/4"	146.1mm	7 1/4"	184.2mm	8 1/4"	209.6mm	12"	304.8mm
D	1/2"	12.7mm	1/2"	12.7mm	1/2"	12.7mm	3/4"	19.1mm	1"	25.4mm

STX MOUNTS : CEILING/WALL/FLOOR TO TOP/BACK/SIDE/BOTTOM

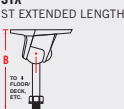
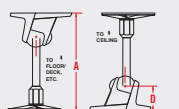


The STX Mounts are longer versions of the ST and give enclosures broader horizontal and vertical coverage ranges.

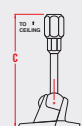


Shown with optional mounting plate.

STX-MP
ST WITH OPTIONAL MOUNTING PLATE



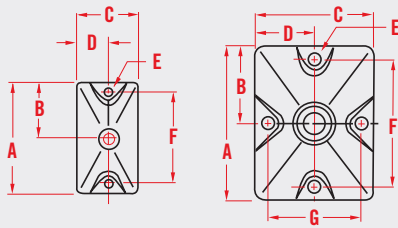
STX-PA
ST WITH OPTIONAL PIPE ADAPTER



Model number indicates weight capacity of the model in pounds.

	20.5 STX		30.0 STX		60.0 STX		120.0 STX		240.0 STX	
A	6 5/8"	168.3mm	7 1/8"	181.0mm	9 1/2"	241.3mm	12 1/2"	317.5mm	16"	406.4mm
B	6 1/2"	165.1mm	7"	177.8mm	9 3/8"	238.1mm	12 1/2"	317.5mm	15"	381.0mm
C	7 1/2"	190.5mm	8 1/4"	209.6mm	10 1/2"	266.7mm	13 3/4"	349.3mm	16 7/8"	428.6mm
D	1 3/4"	44.5mm	2 1/16"	52.4mm	2 5/8"	66.7mm	3 7/16"	88.9mm	4 1/4"	111.1mm

MOUNTING PLATE



20.5 MP

30.0 MP
60.0 MP
120.0 MP
240.0 MP

Model number indicates weight capacity of the model in pounds.

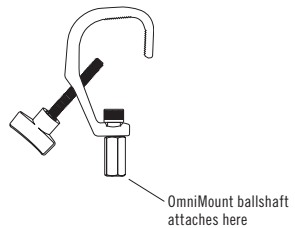
	20.5 MP		30.0 MP		60.0 MP		120.0 MP		240.0 MP	
A	3 3/16"	81.0mm	4 1/4"	108.0mm	4 1/4"	108.0mm	6 7/8"	174.6mm	12"	304.1mm
B	1 19/32"	40.5mm	2 1/8"	54.0mm	2 1/8"	54.0mm	3 7/16"	87.3mm	NA	
C	2 1/4"	57.2mm	3 5/16"	84.1mm	3 5/16"	84.1mm	4 7/8"	123.8mm	12"	304.8mm
D	1 1/8"	28.6mm	1 5/8"	41.3mm	1 5/8"	41.3mm	2 7/16"	61.9mm	NA	
E	1/4"	6.4mm	5/16-3/8"	7.9-9.5mm	5/16-3/8"	7.9-9.5mm	3/8"	9.5mm	NA	
F	2 9/16"	65.1mm	3 1/2"	88.9mm	3 1/2"	88.9mm	5 3/4"	146.1mm	NA	
G	NA		2 5/8"	66.7mm	2 5/8"	66.7mm	4"	101.6mm	NA	

Note: Mounting plate for 240.0 series is designed differently from example shown. Please call for details.

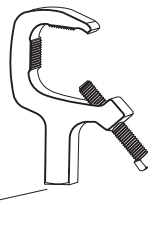
C CLAMPS



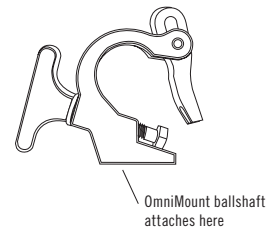
10.0 OMT



20.5. 30.0 SERIES



60.0 SERIES



120.0 SERIES

The C-Clamp Adapter provides a specialized solution for affixing OmniMount supported devices to a horizontal tubular structure, such as a truss or theatrical lighting grid.

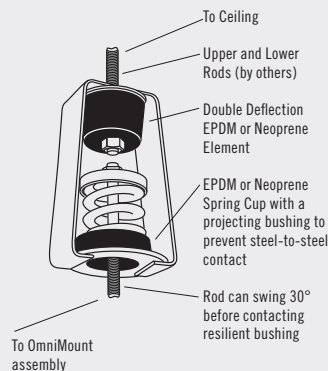
MODEL

10.0 C-Clamp
20.5 C-Clamp
30.0 C-Clamp
60.0 C-Clamp
120.0 C-Clamp

VIBRATION ISOLATORS

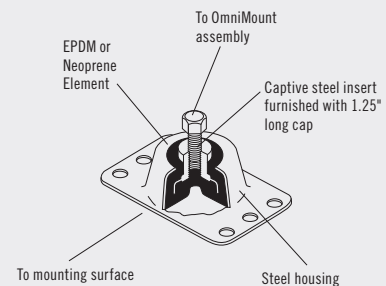
Ceiling Vibration Isolator:

Ideal for suspended ceiling installations, this double deflection isolator incorporates rubber components and an isolating spring. It is typically fastened between two lengths of threaded rod. One length extends upward and is affixed to the structural ceiling. The other length extends downward, coupling to the OmniMount assembly.



Wall Vibration Isolator:

This type of isolator is installed between the mounting surface and the OmniMount assembly. It can be fastened to wall brackets, mounting plates and clamp assemblies.



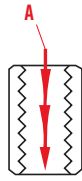
MODEL

60.0 ISO-Wall
60.0 ISO-Ceiling

THREAD COUPLER

Thread Coupler (TC)

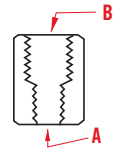
Extends ballshaft length using all-thread rod



PIPE ADAPTER

Pipe Adapters (PA):

Extends ballshaft length using standard pipe available at hardware or plumbing supply stores



Model number indicates weight capacity of the model in pounds.

	20.5 TC	30.0 TC	60.0 TC	120.0 TC	240.0 TC
A	7/16" - 20	1/2" - 20	5/8" - 18	1" - 14	1 1/2" - 12

Exceptions and variations: 30.0 WBX - 3/4"-16; 60.0 WBX - 3/4"-16

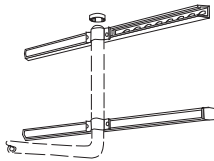
Model number indicates weight capacity of the model in pounds.

	20.5 PA	30.0 PA	60.0 PA	120.0 PA	240.0 PA
A	7/16"-20	1/2"-20	5/8"-18	1"-4	1 1/2"-12
B	1/2"	3/4"	3/4"	1 1/2"	2"

STRUT MEMBER KIT

Strut Member (SM):

36" unistrut member - long enough to traverse three wall studs. Used for wider load distribution on wall surface. (Available in black only.)



MODEL

120.0 SM Kit
240.0 SM Kit
120.0 WA-SM
120.0 WB-SM
120.0 WBX-SM
240.0 WB-SM
240.0 WBX-SM

ACCESSORIES

SAFETY CABLES

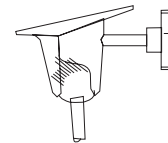


SC1000



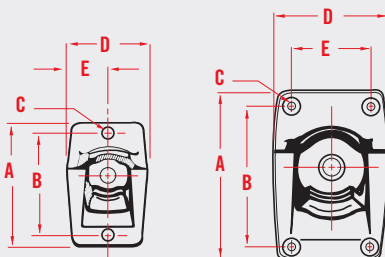
SC500

HANDLE KIT



10.0H, 20.5H, 30.0H

CLAMP AND JAW ASSEMBLY DIMENSIONS



	20.5 2-HOLE		30.0 4-HOLE		60.0 4-HOLE		120.0 4-HOLE		240.0 4-HOLE	
A	3 5/8"	92.0mm	4 7/8"	123.8mm	6"	152.4mm	8"	203.2mm	10 3/4"	273.1mm
B	3"	76.2mm	4 1/4"	107.9mm	5"	127.0mm	6 7/8"	174.6mm	9 1/2"	241.3mm
C	1/4"	6.4mm	1/4"	6.4mm	5/16"	7.9mm	3/8"	9.5mm	1/2"	12.7mm
D	2 3/16"	55.6mm	2 15/16"	74.6mm	4"	101.6mm	5"	127.0mm	7"	177.9mm
E	1 3/32"	27.8mm	2"	50.8mm	2 3/4"	69.9mm	3 1/2"	87.3mm	5"	127.1mm

CLAMP AND JAW FOOTPRINT – ACTUAL SIZE

AVAILABLE COLORS

10.0 OMT
Black and White

20.5 – Black and White

30.0 – Black and White

60.0 – Black and White

120.0 – Black and White

240.0 – Black only

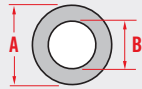
BALLSHAFT DIMENSIONS

THREAD SPECIFICATIONS



All thread sizes U.N.F.

SHAFT INSIDE/ OUTSIDE DIAMETER



Model number indicates weight capacity of the model in pounds.

	20.5	30.0	60.0	120.0	240.0
	7/16" – 20	1/2" – 20	5/8" – 18	1" – 14	1 1/2" – 12

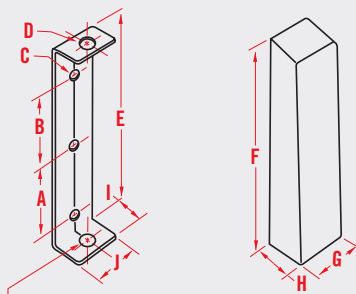
Exceptions and variations: 30.0 WBX/CBX – 3/4"-16; 60.0 WBX/CX – 3/4"-16

Model number indicates weight capacity of the model in pounds.

	20.5	30.0	60.0	120.0	240.0	SPECIAL
A	7/16"	1/2"	5/8"	1"	1 1/2"	3/4"
B	11/32"	13/32"	15/32"	27/32"	1 11/32"	5/8"

Exceptions and variations: 30.0 WBX/CBX – 3/4"-1/2"; 60.0 WBX/CX – 3/4"-1/2"

WALL BRACKET & COVER DIMENSIONS



For 30.0/60.0 WBX models diameter is 3/4".

WB, WBX, WA MOUNTING KITS

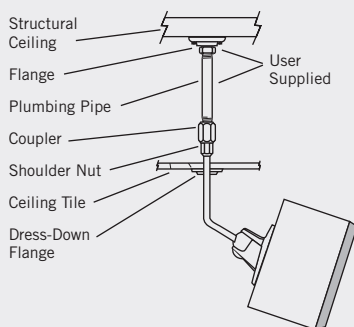
These mount configurations are supplied as complete kits. Basic mounting hardware is supplied with the 20.5 and 30.0 sizes.

Model number indicates weight capacity of the model in pounds.

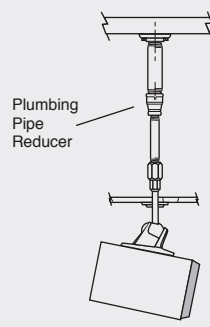
	20.5 – 30.0		60.0	120.0		
A	2 1/8"	53.9mm	3 5/16"	84.1mm	4 11/16"	119.1mm
B	2"	50.8mm	3"	76.2mm	4 9/16"	115.9mm
C	5/16"	7.9mm	3/8"	9.5mm	3/8"	9.5mm
D	7/16-1/2"	11.1-12.7mm	5/8"	15.9mm	1"	25.4mm
E	5 7/16"	138.1mm	8 1/4"	209.6mm	11 1/4"	285.8mm
F	6 3/16"	157.2mm	9 1/4"	235.0mm	12 7/16"	315.9mm
G	1 13/16"	46.0mm	2 1/8"	54.0mm	2 1/8"	54.0mm
H	1 1/8"	28.6mm	1 3/8"	34.9mm	2 1/4"	57.2mm
I	1 1/16"	27.0mm	1 1/4"	31.8mm	2 1/8"	54.0mm
J	1 5/8"	41.3mm	2"	50.8mm	2"	50.8mm

THE PLUMBING PIPE CONNECTION

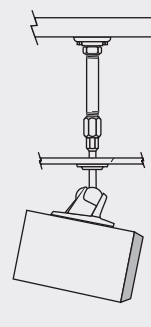
The Pipe Adapter and Thread Coupler accessories introduce a new dimension in mounting flexibility. The Pipe Adapter connects to various sizes of plumbing pipe, which is a world-wide standard threading configuration. This facilitates global use of the OmniMount CA, ST and STX mounts for ceiling mounting. The Thread Coupler is used to join two OmniMounts for supreme flexibility in mounting configurations.



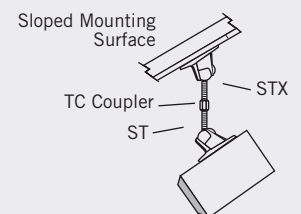
CA-PA



STX-PA



STX-PA



THREAD COUPLER

OmniMount Systems, Inc.

The Pointe at South Mountain
8201 South 48th Street
Phoenix, Arizona 85044-5355
1-800-MOUNT-IT
www.omnimountpro.com