



AMX CONTROL & PROFILE MANAGER PLUG IN SOFTWARE UTILITY

AMX CONTROL USING ONE SCREEN AND THE AMX NETLINKS SYSTEM

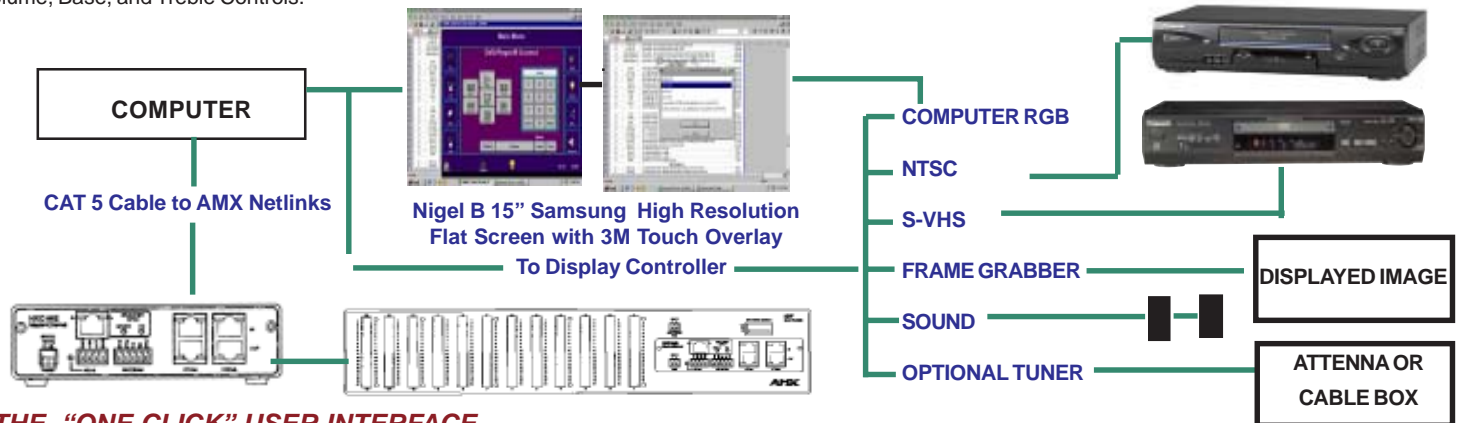
AMX is a Registered TM of AMX, Inc

SUPERIOR MULTI-FUNCTION DISPLAY

You can replace the AMX Touch Screen with an ordinary Tough Screen for about \$350 or with our **Nigel B 15" SINGLE Higher Resolution Flat Panel Display that incorporates a 3M Touch Overlay, that does everything including The AMX Control Display in different resolutions, Computer RGB, NTSC, S-VHS which can be viewed in full 1024X 768 resolution, overlaid, or mimimised.** An optional extra Tuner Module can be added for viewing images from an Antenna or Cable Box.

CONTROL THE POSITION AND SIZE

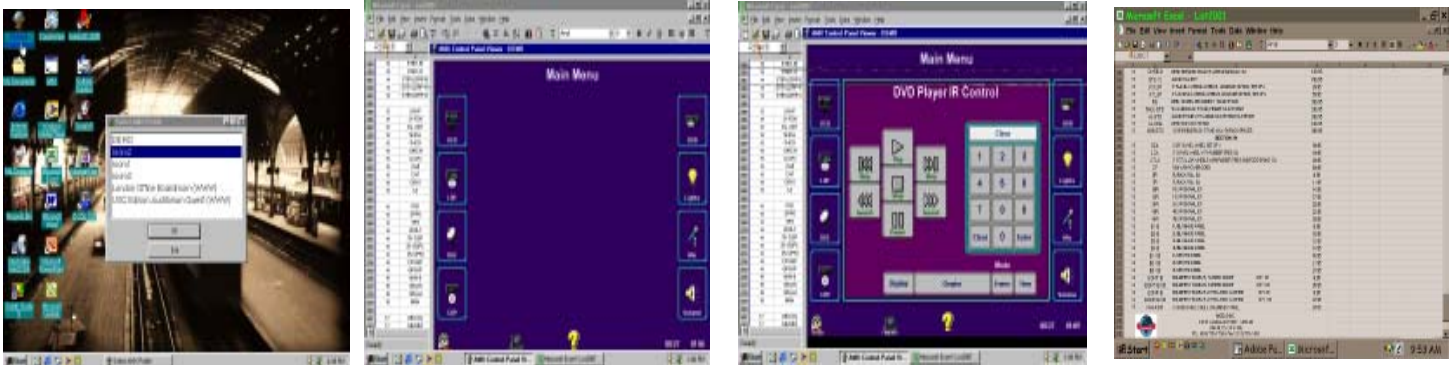
The Built In Controller has Picture in Picture (PIP) functions for every displayed image. Computer RGB, NTSC, S-VHS and Audio. Each displayed image can be scaled or positioned from the Front Panel Menu Button which then displays this information on the screen, including Brightness, Contrast etc. Audio, Volume, Base, and Treble Controls.



THE "ONE CLICK" USER INTERFACE

All the user has to concern themselves with, is to ensure they access the correct Room, which is stored as a Profile. Once the Profile is accessed, using a single mouse click, the AMX Control Screen for that room is instantly loaded and is ready for use.

The Nigel B Software Interface instantly accesses all its information as stored HTML pages in the AMX Netlinks Box which is connected from the Computer by a single CAT 5 Cable. As both the Profiles and AMX Control Screen(s) are stored in the Netlinks Unit Flash Memory, additional Profiles and Control Screens can easily be added at any time.



Right Mouse Click brings up the Profile Manager, selects that Room (Profile) and automatically loads the applicable AMX Control for that location

Left Mouse Click brings up AMX Control Screen overlaying it over another Displayed Program. In this case an Excel Spreadsheet

Select Device by either Mouse or use the Touch Screen. When finished, you can resume with your other functions

Touching the Minimize Button minimizes the Control Panel to the Task Bar where it remains seen until required, allowing the user to continue with other functions

For each Room Profile selected, all the User ever sees, even if multiple IP Addresses have been installed by the AMX Programmer, are **Descriptions, rather than IP Addresses.** If Multiple Rooms are shown on the Profile Screen, these also will have been entered by the AMX Installer in a similar manner, as shown in the diagram above.

AN ADDED BONUS- REMOTE ADMINISTRATION TO ANY AMX CONTROL SCREEN

Access any AMX Control Panel no matter where they are, allows you to control any device. In our example we have put in two remote profiles, which are accessed using the internet. For example, Right Mouse Click London Boardroom, Left click AMX Control, Select Device. Once operated, return to the home location. Adminstrating remote sites is just as easy using the Profile Screen Manager to select the Remote Site you want.

NIGEL B Design, Inc, 4163 ST CLAIR AVE, STUDIO CITY, CA 91604
TEL: (818) 487-9323 FAX: (818) 766-9805 e-mail: sales@nigeldesign.com