

DIMENSIONS™

D3200 Architectural Lighting Control System



Customizable,
Integrated,
Networkable
Dimming and
Scene Control

Dimensions™ D3200 system components



D3208 Multizone Controller Dimmer: Comprehensive multipoint scene control and dimming for partitioned areas, scene scheduling, and control of additional zones and auxiliary loads.



D3206 Multizone Controller Dimmer: Advanced multipoint scene control and dimming.

Suggested Applications

- Home Theaters
- Great Rooms
- Ballrooms
- Conference Rooms
- Restaurants
- Executive Offices
- Surgical Suites
- Houses of Worship
- Light Commercial Applications



NE505:
Decora 4-scene wall controller with Off switch ideal for secondary entranceways and residential applications.



NE210:
Handheld remote control for use with any IR-receiving D3200 Controller.



NE100:
PC/laptop-to-network SmartJack that enables D3200 Setup Software.



NE600:
D3200 network terminator.

multizone dimming and scene wizardry by Dimensions D3200

The D3200 takes preset lighting control to the next level. Its feature-rich components offer a degree of sophistication previously attainable only through complex systems and add-ons. Now, from the banquet room to the family room, Leviton's D3200 series brings you lighting control to create the right ambiance—simply, efficiently, and affordably.

The D3200 system was designed from the ground up to be easy to operate and user-friendly. Intuitive screen wizards guide the user through each step of programming. With the D3200 series you don't have to wait for the resident genius to operate the lights. That's what we mean by truly accessible lighting control. The D3200's powerful, digital-processor-based design builds in extensive features. Its scene-change scheduling, astronomical clock, and join/separate capability move advanced lighting control applications away from "big box" controllers and put them at your fingertips in one, powerful and self-contained unit.

With built-in communications, as many as 100 D3200 devices can be connected for awesome capability. Add stylish Decora scene control stations (with built-in IR receivers, of course), handheld remotes, a SmartJack, and setup software for programming right off your laptop and you have all the tools necessary for the most sophisticated applications.

for the homeowner: simple yet sophisticated



A home entertainment/media room can be a significant investment. Creating the right mood with repeatable lighting scenes greatly enhances the drama associated with the viewing experience. Imagine gathering the family to watch a movie in your home theater. Everyone gets comfortable in their favorite spot when you realize you need to adjust the lights. Although you've got five different types of lighting in the room, you simply select the preset scene on the remote and point it at the stylish Decora Controller on the wall. Each light dims to just the right level for the optimal visual experience.

The D3200 has all the basics covered. At the heart of the system is a self-contained dimmer used not only to program scenes, but also to manually adjust lights to accommodate any task or mood... Let's say, for example, that you've got paperwork to do and need more light than the current scene provides. Simply reach over to the D3206 to brighten a nearby lamp. If you forget which zone the lamp is, press the zone information button to find the right one.



for commercial use: flexible and full-featured

Rooms with removable partitions, such as conference rooms and ballrooms, present lighting challenges that only the most flexible systems can handle. The D3200 takes these challenges in stride by making it easy to combine and separate lighting loads while providing dramatic yet functional scene lighting... All the facilities manager has to do to prepare for a big meeting is to remove the partitions and use the D3208 to select the



Open Room configuration (so that all the lighting controls work together). Now it's ready for the Presenter who will use the NE210 remote control throughout the meeting to adjust the lights without ever leaving the podium.

It is inevitable. Larger and more complex systems take some time and planning to program. The D3200 System can ease this process by storing a number of settings and eliminating a good portion of the programming when adding new controllers.... Picture a restaurant in the midst of expansion. The pre-existing dining room contains diverse lighting configured to automatically change scenes—creating the ideal atmosphere from the time the staff prepares for the day through all meals and through late-night cleanup. Since the new dining area uses the same fixtures, the owner merely calls up Leviton's Setup Software on the restaurant PC and downloads the schedules. No, it's not magic: It's D3200.

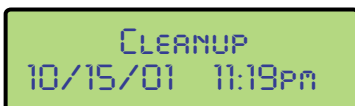


seamless visual effects let you decorate with light

Scene lighting creates dramatic visual effects that enhance interior and architectural design. It also contributes to the overall atmosphere of a space and provides precision control of illumination for specific tasks and events. With the D3200's eight scenes buttons (and a total of 32 programmable scenes), the perfect scene is just a touch away. To ease transitions, the D3200 provides smooth scene changes with programmable fade rates.



unparalleled custom dimming and scene control



The D3200 is in a class of its own when it comes to ease-of-use.

With 32 scenes and a touch of a button, scene control is simplicity itself. Dimensions also features intuitive menus you'd expect to find only with larger-scale dimming systems. Menu-driven wizards displayed on the bright LCD readout lead you step-by-step through

a series of choices to accomplish a wide range of tasks including programming and advanced scene functions. It's really that simple.

sophistication... simplified

One key to keeping it simple is building advanced features into the system.

Reducing the number of components needed to create the ideal D3200 System not only eases setup, it is more cost-effective. The D3206 Multizone Controller/Dimmer includes a comprehensive range of features and the D3208 provides even more powerful features, including an integral astronomical clock, time based sequencing and join/separate capability for unprecedented control.

High Capacity	Full-Featured
6 integral zones per D3200	Wizard LCD Menus
8 one-touch scene buttons	Combine/Separate Functionality
32 scenes	Scheduled Scene Changes
248 total zones	Astronomical Time Clock
100 devices	Optional Remote Control (Learning IR)
1000W/VA per zone, extendable	Optional PC Interface

flexibility for evolving systems

The D3200 is a component-based lighting system flexible enough to address changing requirements, whether they are architecturally or task driven. The heart of the D3200 System is the multizone control dimmer unit. By adding wall mounted scene controllers, a hand-held remote and a SmartJack for PC-based programming, it's easy to assemble a comprehensive lighting control solution that's as basic or advanced as your needs require.

You won't outgrow a Leviton D3200 System. As your needs grow, the D3200 system grows with you--making the upgradeable D3200 a solid long-term investment.

fewer switches, cleaner walls

Using fewer, function-packed D3200 controls can reduce wall clutter and contribute to a more elegant setting. Design and placement can also play an

important role. Decora-style NE505 Scene Controllers feature a sleek entry-station design that coordinates with other Decora switches and controls. The larger D3200 Controllers can be placed in closets and out of sight.

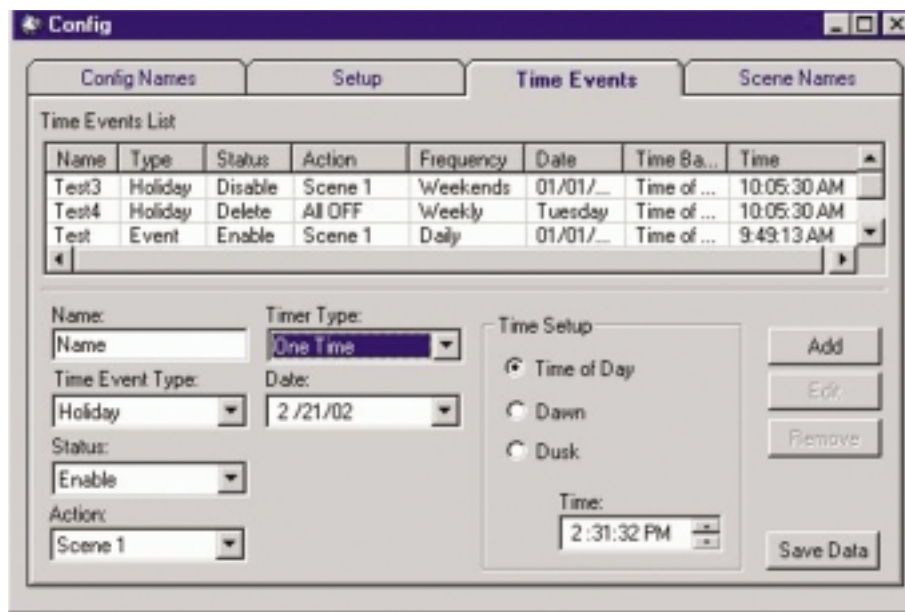


one-touch scene control

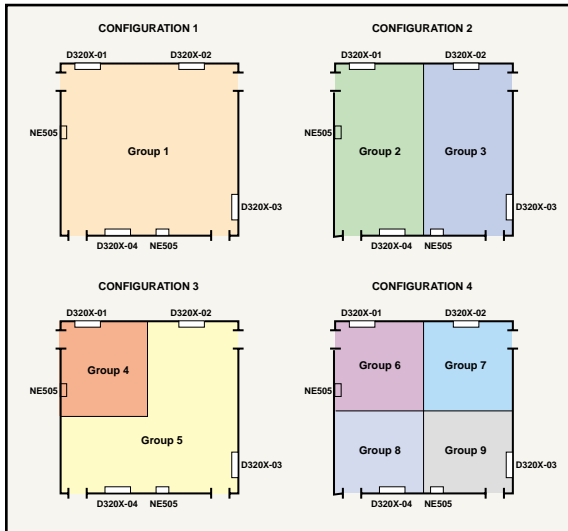
Presetting a scene means not having to repeatedly adjust each lighting channel until the perfect combination is achieved. To be practical, preset scene selection must be easy enough for anyone to use. In most cases, the D3200's eight scene pushbuttons provide more than enough preset lighting options for scene selection in a single touch. Configurable scene-to-scene fade rates can enhance the desired transition.

automate lights with scheduled scene changes

Dimensions D3200 incorporates built-in timers, including an astronomical clock that enables scene changes to occur unassisted. In commercial applications—such as restaurants and museums—automation can ensure optimal 24/7 lighting while saving electricity. In residential applications, scene scheduling can take the place of timers to automate lights for security purposes.



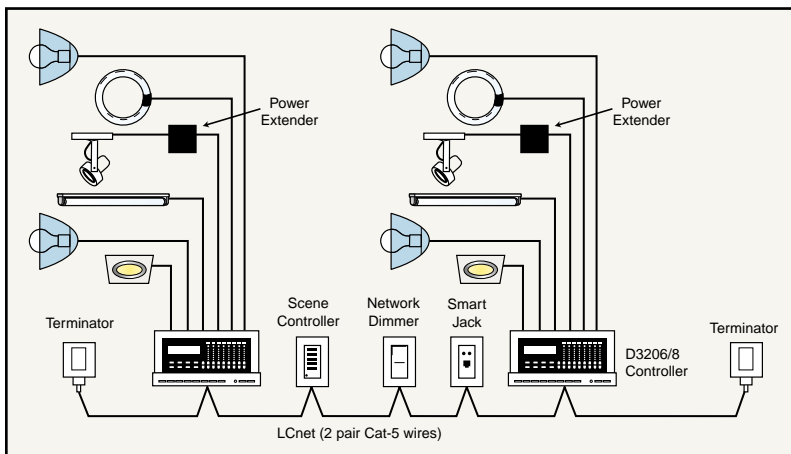
so smart, it adjusts with room partitions



With the D3200, it's easy to customize lighting controls to temporary room partitions. Here's how it works: The key is programming groups that define each space created by probable partition setups. Numerous areas can be combined and separated to be controlled in a multitude of configurations: each one individually, as one group, or in any combination in between. Once programmed, the configuration that is selected and made active will determine which lights each D320X will control. You can even

program Dimensions' NE505 5-button controllers to adjust to each configuration.

control local and remote zones plus auxiliary LCnet devices



The Leviton Control Network (LCnet) connects multiple controllers, which may be attached to numerous dimming and switching loads that work individually or grouped. Not only does this allow partitioning; it enables controllers in one room to interact with networked dimmers, motor loads,

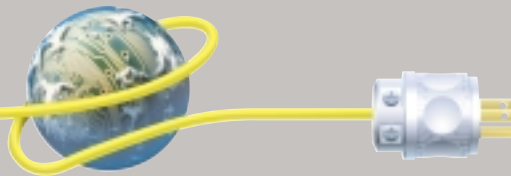
and dimming loads in other rooms. The LCnet is also the communication bus between Leviton software and system dimmers and controllers.

ordering information

Description	Cat. No.	Rating	Color
Dimensions D3206 Multizone Controller/Dimmer - Self-contained dimmer with learning IR receiver that can control local and remote D320X zones. Supplies 24VDC @ 150mA power to hardwired devices. 8 scene buttons (32 total scenes) and 186-zone maximum.	D3206	1920W/VA @ 24VDC (1000W/VA per zone and 1200W/VA per side). For use with Incandescent, Tungsten, Magnetic Low Voltage Transformer, Advance Mark X Electronic Fluorescent, Neon, and Cold Cathode ballasts.	White frame/cover. Ivory/Ivory, Almond/Almond, White/Smoke, Gray/Gray, and Black/Black. Color kits sold separately.
Dimensions D3208 Multizone Controller/Dimmer - D3206 with additional functionality: combine/separate for partitioning, scheduled scene changes, auxiliary dimming and switching loads and 62 more zones (248 maximum).	D3208	Same as D3206	Same as D3206
Dimensions D3200 Scene Controller - Decora 5-button wall controller with 4-scene recall and learning IR receiver.	NE505	No load rating. For use with D320X Controller/Dimmer only.	All White with Ivory switch option. Matching Ivory wallplate sold separately.
D3200 Infrared Remote Control - Provides 8 scene selections, group dim/bright, maximum bright, and off when pointed at any IR-receiving D3200 Controller.	NE210	No load rating. For use with D3200 Controllers.	Black
D3200 Terminator Block - Terminates the LCnet run if the total wire length, including runs, is longer than 10 feet.	NE600	No load rating.	White
Power Extender - Extends D320X power capacity.	DPSPE-112 ¹ DPSPE-212	Varies based on load type and voltage.	Metallic
SmartJack - Decora-style jack required to hook up PC to network to run Setup Software.	NE100	No load rating.	All White with optional Ivory jack insert. Matching Ivory wallplate sold separately.
D3200 Setup Software ² - Software to facilitate system setup and backup settings.	NA	NA	NA

1. Or compatible Leviton power extenders

2. Software can be downloaded from www.leviton.com/D3200



Leviton Lighting Control Division

20497 S.W. Teton, Tualatin, Oregon 97062
Telephone: 503-404-5500 • FAX: 503-404-5600

Leviton Manufacturing Co., Inc.

59-25 Little Neck Parkway, Little Neck, NY 11362-2591
Telephone: 1-800-323-8920 • FAX: 1-800-832-9538
Tech Line (8:30AM-6:00PM E.S.T. Monday-Friday): 1-800-824-3005

Leviton Manufacturing of Canada, Ltd.

165 Hymus Boulevard, Pointe Claire, Quebec H9R 1E9
Telephone: 1-800-469-7890 • FAX: 1-800-563-1853

Leviton S.A. de C.V.

General Arista 54-A Col. Argentina, Mexico D.F., C.P. 11270
Telephone: 011-525-386-1131, 011-525-386-2052 • FAX: 011-525-386-1797

Visit Leviton's Website at www.leviton.com/D3200

