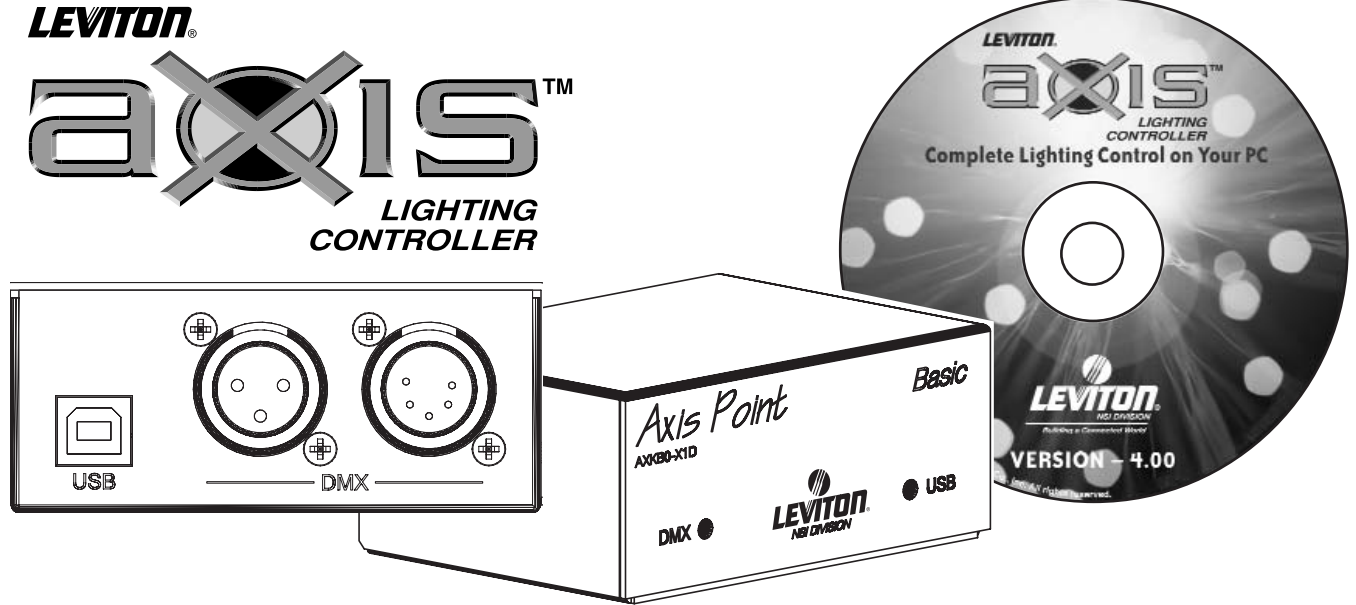


Leviton Axis Lighting Controller and Axis Point USB to DMX Interface



Leviton Axis Lighting Controller

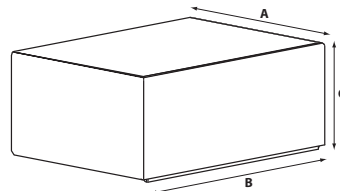
The Leviton Axis Lighting Controller™ from Leviton’s NSI Division allows you to “Take Control of your Lighting” by providing powerful control of automated lighting through easy-to-use PC-based software. Featuring point-and-click advanced programming and advanced effects generation features, Axis makes show production faster and easier than ever before. Any venue which desires full control of your moving lights with rapid effects generation could make use of this software. Available in two versions, Basic & Pro offering identical features, but channel limitations for the budget conscious buyer. The Pro version when used with our Axis Point Expansion hardware allows for a virtually unlimited number of devices to be controlled.

Leviton Axis Lighting Controller – Major Features

- Full support for Automated Lighting
- Limited support for Conventional Lighting
- Advanced Shape Generator for effects generation
- Step-Shift, Shape Shift, & DMX Pilot technology for “immediate result” variations to the active effect
- Time base Scheduler
- MIDI, AVI, MPEG, & WAV event sequencing & programming
- Multiple Masters for individual mastering of different types of devices
- Spotlight mode for “special” fixtures
- Keyboard Shortcuts
- Eight Concurrent Playbacks

Axis Point Specifications

- Up to 512 Channels of DMX output data per interface (see back page for details)
- Both 5-pin XLR & 3-pin XLR Receptacles provided
- Optically Isolated Outputs
- USB Link Indication
- DMX Output Indication
- USB 2.0 Compliance
- CE & FCC Compliance
- USITT DMX 512/1990 Compliant
- USITT DMX 512A Ready
- Physical Properties: 2.6” (A) x 3.56” (B) x 1.45” (C)
Axis Point Weight: 0.6 lbs
Kit Shipping Weight: 1.3 lbs



Leviton Mfg. Co., Inc.
P.O. Box 2210 • Tualatin, Oregon 97062 • Phone: (503) 404-5500 • Fax: (503) 404-5600

Visit our Website at: www.nsicorp.com or www.leviton.com



Building a Connected World

Product Specifications

Axis Lighting Controller

Products & Part Numbers

Leviton Axis Lighting Controller Kit – Basic

Part # AXKB0-X1D

- Current Version Software CD (updates distributed via website)
- USB Cable
- Installation Guide
- Axis Point Basic USB to DMX Interface (72 channels of DMX output)

Leviton Axis Lighting Controller Kit – Pro

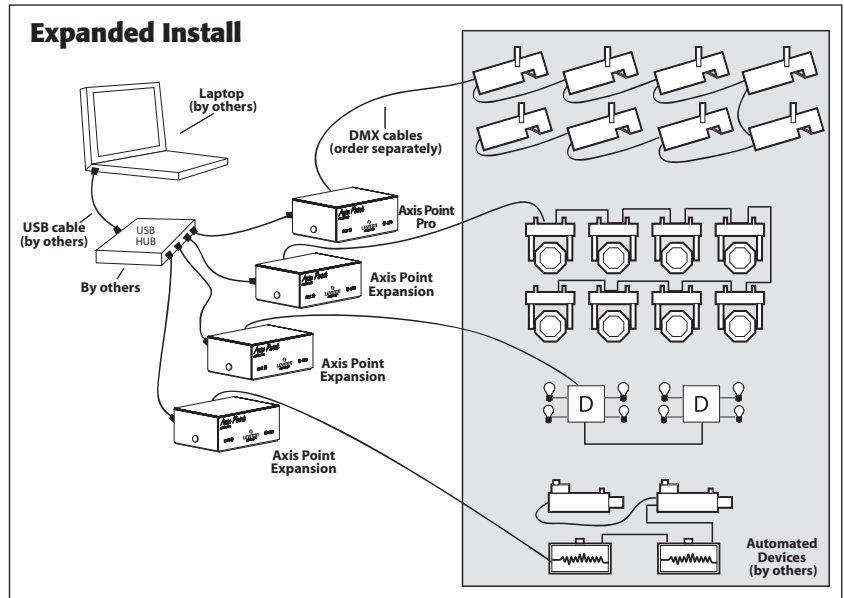
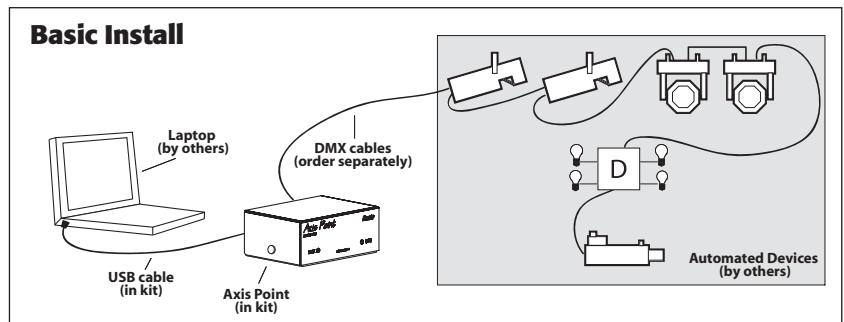
Part # AXKP0-X1D

- Current Version Software CD (updates distributed via website)
- USB Cable
- Installation Guide
- Axis Point Pro USB to DMX Interface (512 output channels per interface, multiple interfaces supported)

Leviton Axis Lighting Controller Kit – Expansion

Part # AXKE0-X1D

- Current Version Software CD (updates distributed via website)
- USB Cable
- Installation Guide
- Axis Point Expansion USB to DMX Interface (512 output channels per interface, multiple interfaces supported)



Accessories

Description	Part #
3' 5-pin DMX Cable	DMX5P-003
10' 5-pin DMX Cable	DMX5P-010
25' 5-pin DMX Cable	DMX5P-025
50' 5-pin DMX Cable	DMX5P-050
100' 5-pin DMX Cable	DMX5P-100
3' 3-pin DMX Cable	DMX3P-003
10' 3-pin DMX Cable	DMX3P-010
25' 3-pin DMX Cable	DMX3P-025
50' 3-pin DMX Cable	DMX3P-050
100' 3-pin DMX Cable	DMX3P-100

Part Numbers

Description	Part #
Leviton Axis Lighting Controller: "Basic" Kit	AXKB0-X1D
Leviton Axis Lighting Controller: "Pro" Kit	AXKP0-X1D
Leviton Axis Lighting Controller: "Expansion" Kit	AXKE0-X1D

Interface Combinations:

Combining interfaces together can dynamically increase the quantity of DMX channels you can output, thereby increasing the number of devices you can control! See the chart below for some typical examples:


Interface Combinations			Total channels of DMX Output
Axis Point Basic	Axis Point Pro	Axis Point Expansion	
1			72
	1		512
		1	0
	1	1	1024
1	1		1024
	1	2	1536
1		1	72
2			72
	1	3	2048

* when more than one interface is used, each interface is assigned a universe number. Multiple interfaces can be assigned to the same universe number thereby creating multiple identical yet discreet data streams.

Leviton Mfg. Co., Inc.
P.O. Box 2210 • Tualatin, Oregon 97062 • Phone: (503) 404-5500 • Fax: (503) 404-5600

Visit our Website at: www.nsicorp.com or www.leviton.com

LEVITON
NSI DIVISION
Building a Connected World

	Leviton Axis Lighting Controller "Basic"	Leviton Axis Lighting Controller "Pro"	Elation Professional CompuWare "Club"	Elation Professional CompuWare "Pro"	Martin Lightjockey 512	Martin Lightjockey 2048	Sunlite Economy	Sunlite First Class	Chauvet ShowXpress
List Price	\$ 650.00	\$ 1,300.00	\$ 649.95	\$ 1,295.95	\$ 2,999.00	\$ 5,499.00	\$ 750.00	\$ 1,500.00	\$ 699.00
DMX Output Channels	72	512 expandable to 130,560	512 Expandable to 5,120	512 Expandable to 5,120	512	2048	512 Expandable to 5,120	512 Expandable to 5,120	512 Expandable to 5,120
# Support Fixtures	Unlimited	Unlimited			100	100			
Fixture Groups	Unlimited	Unlimited	28	28			28	28	
3D Visualizer	Yes	Yes	Yes	Yes	Yes	Yes	Yes	Yes	Yes
3D Studio Import	Yes	Yes	Yes	Yes	No	No	Yes	Yes	No
Gobo Visualization	Yes	Yes	Yes	Yes	Yes	Yes	Yes	Yes	No
Effects Generation	Yes	Yes	Yes	Yes	Yes	Yes	Yes	Yes	Yes
Step-Shift/Shape Shift	Yes	Yes	No	No	No	No	No	No	No
Shape Library	Yes	Yes	Yes	Yes	Yes	Yes	Yes	Yes	Yes
Strobe Console	Yes	Yes	No	No	No	No	No	No	No
Fog Console	Yes	Yes	No	No	No	No	No	No	No
MIDI Input	Yes	Yes	No	Yes	Yes	Yes	No	Yes	Yes
DMX Pilot Technology	Yes	Yes	No	No	No	No	No	No	No
Macros	Yes	Yes	Yes	Yes			Yes	Yes	Yes
Absolute Movment	Yes	Yes	Yes	Yes	Yes	Yes	Yes	Yes	Yes
Relative Movment	Yes	Yes	No	No	Yes	Yes	No	No	No
LED fixture support	Yes	Yes	No	No	No	No	No	No	No
MP3 Sync	Yes	Yes	Yes	Yes	Yes	Yes	Yes	Yes	
AVI Sync	Yes	Yes	Yes	Yes	Yes	Yes	Yes	Yes	Yes
WAV Sync	Yes	Yes	Yes	Yes	Yes	Yes	Yes	Yes	Yes
Scheduler	Yes	Yes	No	Yes	No	No	No	Yes	
RF Remote Support	Yes	Yes	No	No	No	No	No	No	No
Off Line Editing	Yes	Yes	Yes	Yes	Yes	Yes	Yes	Yes	Yes
Auto Start	Yes	Yes	No	No	No	No	No	No	No
Local Support & Developmoent	Yes	Yes	No	No	No	No	No	No	No
Min System Requirements	300Mhz Pentium	300Mhz Pentium	800Mhz Pentium	800Mhz Pentium	200 Mhz Pentium	200 Mhz Pentium	800Mhz Pentium	800Mhz Pentium	