

## Take control of your lighting

Leviton NSI Division brings true intelligence to lighting control with Leviton Axis Lighting Controller™, the most powerful AND affordable PC-based controller available today.

Axis makes show production faster and easier than ever before, with point-and-click advanced programming and effects generation features built right in. Shows that used to take hours of skilled-programming time now come together in just minutes, allowing you to produce more dazzling performances than you ever thought possible.



### With the power of Axis, you get:

- 3D Visualizer — Gives you a live preview of your show right on your PC screen.
- Dynamic shape generator with advanced StepShift technology — Automatically develops advanced patterns and shapes with point-and-click ease.
- Area limits feature — Automatically adapts your existing shows to any size venue. Make one show, and use it wherever you go!
- Live control overrides even when the show is running.
- Multiple masters to integrate fog machines, strobes and other effects.
- One-touch synchronization or inverse of all like-fixtures.
- Spotlight mode — Freezes a light while the rest of the show stays in motion.
- Basic and Pro versions available to meet the varied needs of your projects.
- And much more!

Whether you are a novice or a seasoned pro, Axis puts all the tools right at your fingertips.  
**If you can run a PC, you already know how to use Axis!**



PO Box 2210, Tualatin, OR 97062 USA  
Phone (503) 404-5500 • FAX (503) 404-5594 • Info Line 1-800-996-2276  
[www.nsicorp.com](http://www.nsicorp.com)

Copyright ©2003 Leviton Mfg. Co. Inc. Specifications subject to change without notice  
G-6972

### Features

- Area limits
- Shape-generator driven effects that allow for sharing sequences between fixtures and users. Offsets and effects can be achieved painlessly.
- Pre-programmed geometric shapes
- Audio trigger
- Blackout feature includes shutter and/or color and gobo
- CMY & RGB color mixing, direction selection & palette
- Custom naming and recall of all scenes, sequences, etc.
- Eight concurrent playbacks
- Fade between different sequences using fade mode
- Fog machine support with dedicated controls
- Grand master dimmer fader for all fixtures
- Keypad support for quick recall
- Live control and mastering of fixtures, groups, and devices even while running sequences and shows
- MIDI input for control of sequences and functions on lighting desk. MIDI time code can also be used to synchronize the light show to external sources (requires MIDI interface)
- Scheduler
- Sequencing of events to media files (AVI, MPEG, WAV, & MP3)
- Spotlight mode will set a fixture or fixtures in a stationary mode, while the rest of the light show continues as normal
- Strobe-friendly design. Control all strobes from the master desk. No need to buy two controllers
- Sub masters for each chaser used to control dimmer of all fixtures assigned to that chaser
- Wizards for Color Mixing of LED fixtures
- 3D Studio import
- Automatic backup
- Custom profiles
- DDL fixture profiles
- Adjustable DMX refresh rate
- Controls any DMX equipment
- DMX-output window
- Different manufacturers' products can all exist and work together in the same group
- File manager control and operation of sequences
- Fixture grouping
- Presets can be assigned to buttons for quick recall of scenes
- RF remote control with 200 foot range (requires equipment by others)
- Unique implementation of copy and paste features
- Synchronize or inverse all similar fixtures with a touch of a button
- Touch-screen compatible with sizable buttons (touch-screens available from other suppliers)
- Visualize channel properties with colors, text, and bitmaps, or a combination of colors, text, and bitmaps
- 2-D beam & gobo visualization
- Full 3-D visualization



LEVITON  
**axis**™  
LIGHTING  
CONTROLLER



See your show in motion, as you build it and as it runs

Lighting console power with the familiarity of a PC

Design complex patterns easily

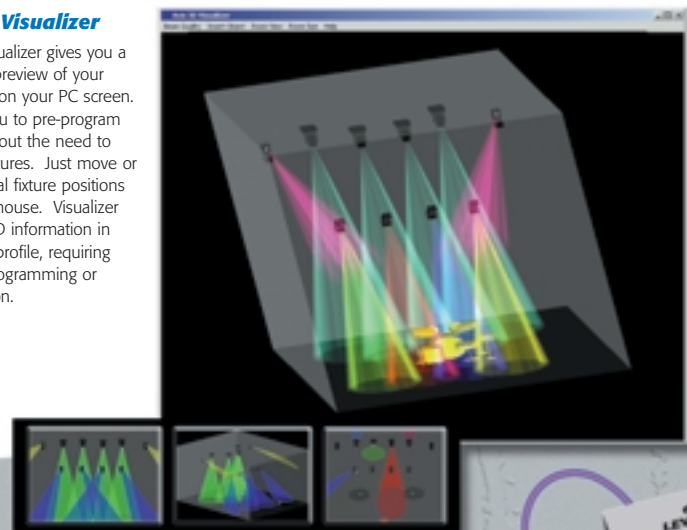
Add fog, strobes and other effects

Synchronize with MP3 and other music files



### Axis 3D Visualizer

The 3D Visualizer gives you a virtual 3D preview of your show right on your PC screen. It allows you to pre-program shows without the need to connect fixtures. Just move or adjust virtual fixture positions using the mouse. Visualizer saves all 3D information in the fixture profile, requiring no extra programming or configuration.



# LEVITON axis™ LIGHTING CONTROLLER

Take control of your lighting



### Audio Trigger (effects generator)

The audio trigger module provides optimal music-to-lights or video-to-lights syncing so you can activate each step of a sequence to the beat. Or, you can set the average fade-time of the sequence to the average BPMs of the music. The audio trigger can simulate the actions of a light jockey by triggering a sequence every 16 beats (user definable). And a manual beat trigger is also available on the main desktop screen (sound card required).



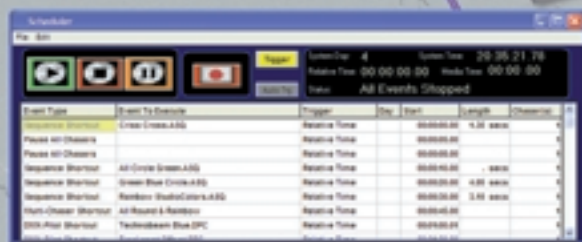
### Fixture List

The Fixture List window allows the user to quickly select multiple or single fixtures. You can change the properties of all selected fixtures one at a time, edit a light show live, change colors and gobos of selected fixtures, create fixture groups, and more.



USB DATA FROM PC

DMX DATA TO FIXTURES



### Strobe Console

The strobe console lets you manage all loaded strobes in the program, including control over intensity, rate channels, chase effects, and more.

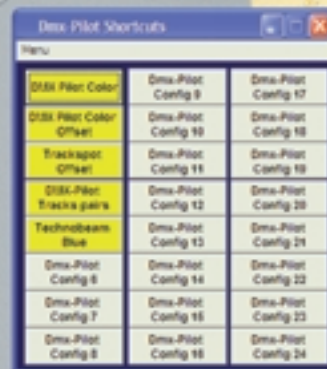
### Show Scheduler

The show scheduler allows for the recording of lighting events to a timeline. You can also link playback of audio/video files into the schedule as well. The scheduler fully supports a broad range of synchronization methods including MIDI time code and SMPTE Schedules. Recording into the scheduler is easy. Simply press the record button and then play back your sequences, as you want to record them. Once recorded, all of your lighting events are presented in a chronological list for easy editing and updates as your show is refined.



### Shape Generator

Powerful effects generation—brought to you courtesy of the Shape Generator—makes the creation of complex light shows quick and easy. Just select from the fixtures list, then choose a shape from the generator. Instantly, the shape is applied to the fixtures and movement begins! Powerful modifiers like X-axis and Y-axis size, and StepShift technology allows for complete user configuration to easily create complex shapes and patterns.



### DMX Pilot

Now, you can quickly generate new random sequences and effects using the DMX Pilot feature. Just set minimum and maximum values for each channel in a group of fixtures, then save those parameters as a profile. When the profile is recalled, the program picks random properties between the maximum and minimum values and automatically creates a sequence for playback in real time.



### Shortcuts built right in

All sequence shortcuts, presets, scenes, chasers, and other recordable items can be programmed to preset "buttons," or can be assigned to keys on the keyboard for convenient access and instant recall. This makes recall for live shows or scheduled recording a breeze!



### MIDI Input

MIDI Input allows any event on the 16 MIDI channels to activate main desktop functions or sequences. MIDI input can even be used to activate media and scheduler events. An additional sound card with MIDI input is required.

### Auto Startup

Auto Startup allows the software to begin a show automatically when the computer is powered up.

### RF Remote

With additional hardware by others, you can use an RF remote control to give you mobility while programming and running a show. Various styles of remote controls are available, from an eight-button slim model, to a 32-button switchable remote that can handle up to 256 assignments. (Hardware by others. See documentation for details.)

### Area Limits

The Area Limits feature is especially useful for mobile DJs. All sequences can be resized and adapted to the new dance areas or environments.

Download a demo from [www.nsicorp.com](http://www.nsicorp.com)

\*Axis Point USB→DMX interface required for operation. Interface and USB cable included with kits. DMX cable, PC, and lighting devices not included.