

WP Series

WP Series Wall Plate Adapters/Processors

This series includes passive and active wall plate devices for interfacing audio, video, s-Video and VGA/XGA type signals (and graphics sources of other resolutions) to standards as needed in Presentation and other applications. They can be used with the VPM-2 (page 4.30) or the Frame (on the next page).

Passive Devices



WA-1N

Terminal Block Adapter for Balanced Stereo Audio

A 6-pole terminal block on both sides of the adapter for connecting balanced stereo audio.



WA-2N

Dual RCA to Terminal Block Adapter

A dual RCA to a 6-pole terminal block adapter for connecting a stereo audio signal (single stereo channel).



WA-3N

Dual Mini Headphone Connector to Terminal Block

A dual 3.5mm mini headphone connector to a 6-pole terminal block adapter for connecting dual audio stereo channels.



WV-2N

Dual BNC to Terminal Block Adapter

A dual BNC to 6-pole terminal block adapter for connecting two video sources.



WAS-1N

4p + Mini Headphone Connectors to Terminal Block Adapter

An s-Video (on a "4p" connector) and a 3.5mm mini headphone connector to two 3-pole terminal block, for connecting s-Video and stereo audio.



WX-1N

HD-15 to Terminal Block Adapter (VGA through UXGA)

A HD-15 (VGA through UXGA) connector to a 6 + 2 terminal block connector for connecting a graphics source. The adapter includes a switch for ID bit control.



WAV-1N

BNC + Mini Headphone Connector to Terminal Block Adapter

A BNC and a 3.5mm mini headphone connector to the two 3-pole terminal blocks, for connecting video and stereo audio.



European version shown

WAV-2

Terminal Blocks Adapter for Component Video and audio

A wall plate that has on the front three video inputs (YUV, Composite, YC, RGB) on RCAs and a 3.5mm stereo audio socket. On the back it has terminal block connectors.

WAV-1E/EUK - For UK and most of European countries
WAV-1E/BG - For Belgium and Germany only



European version shown

WVS-1

Terminal Block Adapter for YC and Stereo Audio

A wall plate that has on the front a YC (s-Video) connector and two RCAs for audio. On the back it has terminal block connectors.

WVS-1E/EUK - For UK and most European countries
WVS-1E/BG - For Belgium and Germany only



European version shown

WVS-2

Terminal Block Adapter for YC, CV and 2 x Stereo Audio

A wall plate that has on the front YC (s-Video), CV (RCA) and 2 x 3.5mm stereo audio connectors. On the back it has terminal block connectors.

WVS-2E/EUK - For UK and most European countries
WVS-2E/BG - For Belgium and Germany only



European version shown

WXA-1

Terminal Blocks Adapter for XGA and Stereo Audio Terminal Blocks Adapter for XGA and Stereo Audio

Compatible with HDTV component video signals when used with a breakout cable such as the Kramer CGM/3RVF.



A wall plate that has on the front an XGA (HD-15) and a 3.5mm stereo audio connector. On the back it has terminal block connectors.

WXA-1E/EUK - For UK and most European countries
WXA-1E/BG - For Belgium and Germany only



European version shown

WXV-1

Terminal Block Adapter for XGA and Composite Video

Compatible with HDTV component video signals when used with a breakout cable such as the Kramer CGM/3RVF.



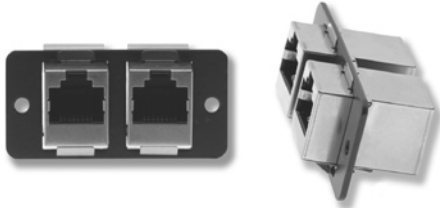
A wall plate that has on the front an XGA (HD-15) and a CV (RCA) connector. On the back it has terminal block connectors.

WXV-1E/EUK - For UK and most European countries
WXV-1E/BG - For Belgium and Germany only

Passive Devices

W4545

Double RJ-45 Pass Through



WRR

Double RCA Pass Through



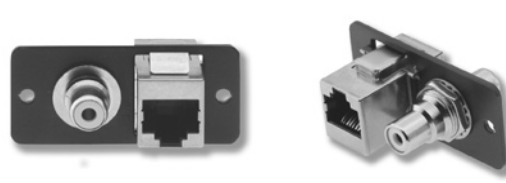
WB 45

BNC and RJ-45 Pass Through



WR 45

RCA and RJ-45 Pass Through



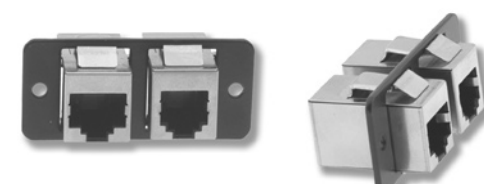
WBB

Double BNC Pass Through



W 1145

RJ-11 and RJ-45 Pass Through

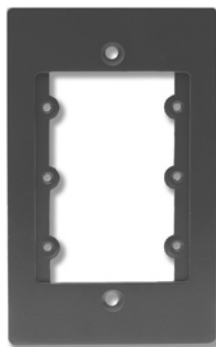


WBR

BNC and RCA Pass Through



FRAME



WD-2F

Female DB-9 to Female DB-9

WD-2M

Male DB-9 to Male DB-9

WD-FM

Female DB-9 to Male DB-9

WD-MF

Male DB-9 to Female DB-9



WX-2F

Female VGA to Female VGA

WX-2M

Male VGA to Male VGA

WX-FM

Female VGA to Male VGA

WX-MF

Male VGA to Female VGA



Multifunctional Passive Wall Plates



US version shown

WXL-1FM

Female and Male XLR Audio to Terminal Blocks Adapter

A wall plate with female and male XLR connectors on the front and terminal block connectors on the back.

WXL-FME/E - For UK and most of European countries

WXL-FME/B - For Belgium only

WXL-FME/G - For Germany only



US version shown

WXL-1F/2F

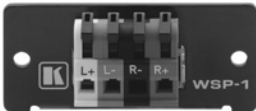
One or two Female XLR Audio to Terminal Blocks Adapter

A wall plate that has a female (WXL-1F) or two female (WXL-2F) XLR connectors on the front and terminal block connectors on the back.

WXL-1F/2FE/E - For UK and most European countries

WXL-1F/2FE/B - For Belgium only

WXL-1F/2FE/G - For Germany only



WSP-1

Terminal Blocks Adapter for Loud Speakers Connection

A 4-pole adapter between loudspeakers cables. Fits into the Frame (see page 6.40).



US version shown

WXL-1M/2M

One or two Male XLR Audio to Terminal Blocks Adapter

A wall plate that has a male (WXL-1M) or two male (WXL-2M) XLR connectors on the front and terminal block connectors on the back.

WXL-1M/2ME/E - For UK and most European countries

WXL-1M/2ME/B - For Belgium only

WXL-1M/2ME/G - For Germany only

Active Devices



European version shown

WV-11N**Twisted Pair Transmitter**

Video on a BNC connector to a 3-pole terminal block twisted-pair transmitter with video LEVEL and EQ. controls, allowing high quality video to be sent over a distance of up to 1km (up to 100m @ 56MHz) in conjunction with WV-12N.

WV-11NE/**EUK** - For UK and most European countries
WV-11NE/**BG** - For Belgium and Germany only



European version shown

WV-12N**Twisted Pair Receiver**

Provides a video output (on a BNC connector) from a 3-pole terminal block. It provides LEVEL and EQ. controls and works in conjunction with the WV-11. Range of 100m @ 56MHz line with WV-11.

WV-12NE/**EUK** - For UK and most European countries
WV-12NE/**BG** - For Belgium and Germany only



European version shown

WA-20N**Balanced to Unbalanced Stereo Audio Converter/Twisted - Pair Stereo Audio Receiver**

A dual RCA connector output to a 6-pole terminal block for converting balanced stereo audio to unbalanced stereo audio (or to act as a twisted-pair stereo audio receiver). 100kHz bandwidth together with WA-21N.

WA-20NE/**EUK** - For UK and most European countries
WA-20NE/**BG** - For Belgium and Germany only



European version shown

WA-21N**Unbalanced to Balanced Stereo Audio Converter/Twisted - Pair Audio Transmitter**

A 3.5 mm mini headphone connector to a 6-pole terminal block for converting an unbalanced stereo audio signal to balanced audio (or act as a twisted-pair audio transmitter) with Right and Left audio level controls. 100kHz bandwidth together with WA-20/22.

WA-21NE/**EUK** - For UK and most European countries
WA-21NE/**BG** - For Belgium and Germany only



European version shown

WA-22N**Balanced to Unbalanced Stereo Audio Converter/Twisted - Pair Stereo Audio Receiver**

A 3.5mm mini headphone connector output to a 6-pole terminal block for converting balanced stereo audio to unbalanced stereo audio (or to act as a twisted-pair stereo audio receiver). 100kHz bandwidth together with WA-21/23.

WA-22NE/**EUK** - For UK and most European countries
WA-22NE/**BG** - For Belgium and Germany only



European version shown

WA-23N**Unbalanced to Balanced Stereo Audio Converter/Twisted - Pair Audio Transmitter**

A dual RCA connector to a 6-pole terminal block for converting an unbalanced stereo audio signal to balanced audio (or to act as a twisted-pair audio transmitter) with Right and Left audio level controls. 100kHz bandwidth together with WA-20/22.

WA-23NE/**EUK** - For UK and most European countries
WA-23NE/**BG** - For Belgium and Germany only



European version shown

WV-20N**A 1:2 Distribution Amplifier and line driver for video**

A 1:2 distribution amplifier and line driver for video on a BNC to a 3-pole terminal block connector. Video bandwidth exceeds 400MHz and quality video can be obtained (when using high quality coax cables) even 300 meters (1000 ft.) away. The device also provides video LEVEL and EQ. controls.

WV-20NE/**EUK** - For UK and most European countries
WV-20NE/**BG** - For Belgium and Germany only



US version shown

WP-210A**XGA/Audio Line Driver**

Compatible with HDTV component video signals when used with a breakout cable such as the Kramer C-GM/3RVF.



XGA/Audio Line Driver wall plate with an VGA through UXGA looping input (HD-15) and an amplified and equalized RGBHV output with cable EQ., ID bit control and audio level control. Audio input on 3.5mm connector.

WP-210AE/**E** - For UK and most European countries

WP-210AE/**B** - For Belgium only

WP-210AE/**G** - For Germany only



US version shown

WP-220**XGA/Video/Audio Line Driver**

Compatible with HDTV component video signals when used with a breakout cable such as the Kramer C-GM/3RVF.



XGA/Video/Audio Line Driver wall plate with a VGA/UXGA input (HD-15), Composite video input and two stereo audio inputs - one on RCAs, one on a mini 3.5mm socket (from PC) and an amplified and equalized RGBHV output with cable EQ., a CV output with cable EQ. and two balanced stereo outputs, one with R&L level controls.

WP-220E/**E** - For UK and most European countries

WP-220E/**B** - For Belgium only

WP-220E/**G** - For Germany only



Active Devices

WP-210E

XGA Line Driver



Compatible with HDTV component video signals when used with a breakout cable such as the Kramer C-GM/3RVF.

European version shown

XGA Line Driver wall plate with a VGA/UXGA looping input (HD-15) and an amplified and equalized RGBHV output with cable EQ. level, ID bit and termination controls.

WP-210 - US Version

WP-210E/E - For UK and most European countries

WP-210E/B - For Belgium only

WP-210E/G - For Germany only



WP-110

An XGA line transmitter

Compatible with HDTV component video signals when used with a breakout cable such as the Kramer C-GM/3RVF.



An XGA line transmitter that receives an XGA signal and transmits it over a CAT5 cable to the TP-120 receiver. The WP110 has a 150MHz video bandwidth, allowing a transmission range of 300ft. (> 100 meters).

WP-110E/EUK - For UK and most European countries

WP-110E/BG - For Belgium and Germany only



European version shown



WPN-11

UXGA Video Transmitter

A unique wall plate combination with which a single multicore VGA/UXGA cable can transmit graphics or video signals (Composite, Y/C, Component, HD etc.) over the built-in coax cable in the graphics cable. Usually used together with the WPN-12 receiver.

WPN-11E/E - For UK and most European countries

WPN-11E/B - For Belgium only

WPN-11E/G - For Germany only

US version shown



WPN-12

Receiver system

A unique wall plate combination with which a single multicore VGA/UXGA cable can transmit graphics or video signals (Composite, Y/C, Component, HD etc.) over the built-in coax cable in the graphics cable. Usually used together with the WPN-11 transmitter.

WPN-12E/E - For UK and most European countries

WPN-12E/B - For Belgium only

WPN-12E/G - For Germany only

US version shown

Size Code	Categories	Measures (W, H)
-	1 Gang US	69mm x 114.3mm
EUK	1 Gang UK/Europe	86mm x 86mm
BG	1 Gang Belgium/Germany	80mm x 80mm
-	2 Gang US	114.3mm x 114.3mm
E/E	2 Gangs UK/Europe	146mm x 86mm
E/B	2 Gangs Belgium	151mm x 80mm
E/G	2 Gangs Germany	151mm x 80mm

