

Ken-A-Vision®

# PRODUCT CATALOG



**ken-a-vision®**  
KNOWLEDGE THROUGH VISION



## Ken-A-Vision®

Ken-A-Vision is a proven manufacturer of a broad range of innovative microscopic and presentation equipment offering visual solutions to the global learning environment.

All products are available for world sales.  
NTSC and PAL  
110 – 240V

**1-816-353-4787**  
**[www.ken-a-vision.com](http://www.ken-a-vision.com)**

Look for Windows or Macintosh compatible products.



*Front cover images, clockwise:*  
Elementary teacher using a 7890UM, 12th grade chemistry class using a 7600, middle school students using a T-1702C, 10th grade student with teacher using a T-1922

*Back cover images, left to right:*  
Elementary teacher using a MVP-100, 10th grade science students using a 7600, 11th grade science student using a 7700, laptop cart complete with T-1901 and 7600

©2006

# Ken-A-Vision® 2006 Table of Contents

PupilCAM®	3
Aqua Flex	4
PhysicsCAM	4
Vision Viewer™	5
BookCAM	5
ShopCAM	5
Video Flex® Explorer 2100	6
Megapixel Digital Video Flex®	6
Video Flex®	7
Microprojector 2	8
MVP-100	9
Applied Vision™ Software	11
Ken-A-Vision® Network Camera Software	13
Professor by Ken-A-Vision®	14
PrepScope	14
CoreScope	15
Comprehensive Scope	15
VisionScope	16
Multicharger	16
Comparison Scope	17
Research Scope	18
Microprojector	19
Digital PrepScope	19
Megapixel Digital Comprehensive Scope	20
Memory Scope	21
Memory Scope Lab Package	22





# PupilCAM



Make your microscope so the whole classroom can see with the PupilCAM®! The Ken-A-Vision® PupilCAM is a microscope camera that connects directly to your classroom monitor, multimedia projector or computer with either a USB 1.1 or 2.0 USB connection. It has a pre-attached five-foot video or USB cable and a built-in microscope adapter or a built-in 10x eyepiece that fits directly on your microscope. The adapter and eyepiece provide a secure and precise alignment to your microscope or stereoscope.

## Features

- One Piece Construction — No Spare Parts to Lose
- Plug-N-Play
- Works on Most Microscopes Throughout the World



## SPECIFICATIONS

Catalog #	1401KRN	1401KEN	1401KR	1401KE	1401KRM
Weight	2 lbs / 0.91 kgs	2 lbs / 0.91 kgs	1 lb / 0.45 kgs	1 lb / 0.45 kgs	1 lb / 0.45 kgs
Dimension	6.5"L X 4.5"W X 5.5"H 16.5 cm X 11.4 cm X 14 cm	6.5"L X 4.5"W X 5.5"H 16.5 cm X 11.4 cm X 14 cm	6.5"L X 4.5"W X 5.5"H 16.5 cm X 11.4 cm X 14 cm	6.5"L X 4.5"W X 5.5"H 16.5 cm X 11.4 cm X 14 cm	6.5"L X 4.5"W X 5.5"H 16.5 cm X 11.4 cm X 14 cm
Box Weight	3 lbs / 1.4 kgs	3 lbs / 1.4 kgs	2 lbs / 0.91 kgs	2 lbs / 0.91 kgs	2 lbs / 0.91 kgs
Box Dimension	10"L X 6"W X 7"H 25.4 cm X 15.2 cm X 17.8 cm	10"L X 6"W X 7"H 25.4 cm X 15.2 cm X 17.8 cm	10"L X 6"W X 7"H 25.4 cm X 15.2 cm X 17.8 cm	10"L X 6"W X 7"H 25.4 cm X 15.2 cm X 17.8 cm	10"L X 6"W X 7"H 25.4 cm X 15.2 cm X 17.8 cm
Output	Composite (NTSC or PAL)	Composite (NTSC or PAL)	Digital	Digital	Digital
Connection	Video (RCA)	Video (RCA)	USB 1.1	USB 1.1	USB 2.0/1.1
Lens	8mm Glass	8mm Glass	8mm Glass	8mm Glass	8mm Glass
Eyeiece	Built-in Adapter (25mm – 34mm)	Built-in 10x	Built-in Adapter (25mm – 34mm)	Built-in 10x	Built-in Adapter (25mm – 34mm)
Resolution (H)	350 Lines	350 Lines	640 X 480	640 X 480	1280 X 960 SXGA
Light Sensitivity	1.0 Lux	1.0 Lux	3.0 Lux	3.0 Lux	2.0 Lux
Cable Length	Pre-attached 5' (1.5 meter) Video Cable	Pre-attached 5' (1.5 meter) Video Cable	Pre-attached 5' (1.5 meter) USB Cable	Pre-attached 5' (1.5 meter) USB Cable	Pre-attached 5' (1.5 meter) USB Cable
Software	No	No	Applied Vision™ Software for Windows® Ken-A-Vision® Capture for Macintosh®	Applied Vision™ Software for Windows® Ken-A-Vision® Capture for Macintosh®	Applied Vision™ Software for Windows®
Warranty	1 Year	1 Year	1 Year	1 Year	1 Year

Specifications subject to change without notice



1-816-353-4787 [www.ken-a-vision.com](http://www.ken-a-vision.com)

# Aqua Flex



Ken-A-Vision® created the Aqua Flex with classroom underwater observation in mind. With its patented light technology that can see through turbidity, the Aqua Flex is the ideal addition to any field trip, nature center or to monitor any aquarium.

## Features

- Water Proof
- Illumination – Powered by Ken-A-Vision® Technology
- 33' (10 meters) Cable
- Optional Accessories:
  - Submersible Extension Rod Adapter
  - USB Adapter
  - Battery Pack

## Applications

- Outdoor Aquatic Systems
- Locating Benthic Organisms
- Aquaria

SPECIFICATIONS	
Catalog #	1470
Weight	2 lbs / 0.91 kgs
Dimension	3"L X 2"W / 7.6 cm X 5 cm
Box Weight	3 lbs / 1.4 kgs
Box Dimension	9"L X 12.5"W X 2.5"H 22.9 cm X 31.8 cm X 6.4 cm
Output	Composite (NTSC or PAL)
Connection	Video (RCA)
Resolution (H)	350 Lines
Lumens	.5m – 1m 600 - 250
Output	Composite (NTSC or PAL)
Connection	Video (RCA)
Resolution	350 Lines
Focal Distance	10 cm to infinite, fixed
Cable Length	33' (10 meters) Video
Enclosure	Aluminum, Water Proof
Warranty	1 Year
Specifications subject to change without notice	

# PhysicsCAM



The PhysicsCAM connects directly to a wide range of classroom physics apparatus and allows for visual confirmation of experimental results. Now teachers can create digital pictures of a number of physics experiments! The camera comes with an adjustable eyepiece which will allow attachment onto optical apparatus varying from 23-34mm in diameter (O.D.). The PhysicsCAM connects directly to a PC or MAC computer through a USB port. Applied Vision™ Software for Windows® provides image capture, time-lapse, and movies of physical events.

## Suggested Physics Apparatus and Experiments

- Spectrometers
- Interferometers
- Light Scopes
- Color Comparators
- Polarimeters
- Refractometers
- Millikan Oil Droplet Apparatus



SPECIFICATIONS	
Catalog #	7870
Weight	1 lb / 0.45 kg
Dimension	6"L X 5"W X 4"H / 15.2 cm X 12.7 cm X 10.2 cm
Box Weight	2 lbs / 0.91 kgs
Box Dimension	10"L X 6"W X 7"H / 25.4 cm X 15.2 cm X 17.8 cm
Output	Digital
Connection	USB 1.1
Lens	6mm Glass
Resolution (H)	640 x 480 VGA
Light Sensitivity	3.0 Lux
Magnification	30:1 or Greater
Focal Distance	8 mm to infinity
Software	Applied Vision™ for Windows® & Ken-A-Vision Capture for Macintosh®
Cable Length	Pre-attached 5' (1.5 meters) USB
Warranty	1 Year
Specifications subject to change without notice	

1-816-353-4787 www.ken-a-vision.com



# Vision Viewer

## Megapixel Digital Vision Viewer



The NEW Megapixel Digital Vision Viewer™ 7890UM has high camera resolution and a USB 2.0 connection. It comes complete with Applied Vision™ Software for Windows®. The software provides FTP Uploading and Video Streaming, allowing you to develop multiple solutions to meet all your presentation needs.

### Features

- Pre-Attached Cabling – No Cable to Lose
- 1280 X 960 SXGA Resolution
- Applied Vision™ Software for Windows®



SPECIFICATIONS			
Catalog #	7890B	7890U	7890UM
Weight	3.86 lbs / 1.75 kgs	4 lbs / 1.82 kgs	4 lbs / 1.82 kgs
Dimension	7"L X 7"W X 25"H 17.8 cm X 17.8 cm X 63.5 cm	7"L X 7"W X 25"H 17.8 cm X 17.8 cm X 63.5 cm	7"L X 7"W X 25"H 17.8 cm X 17.8 cm X 63.5 cm
Box Weight	7 lbs / 3.18 kgs	7 lbs / 3.18 kgs	7 lbs / 3.18 kgs
Box Dimension	13"L X 8"W X 8"H 33 cm X 20.3 cm X 20.3 cm	13"L X 8"W X 8"H 33 cm X 20.3 cm X 20.3 cm	13"L X 8"W X 8"H 33 cm X 20.3 cm X 20.3 cm
Output	Composite (NTSC or PAL)	Digital	Digital
Connection	Video (RCA)	USB 1.1	USB 2.0 / 1.1
Lens	6mm Glass	6mm Glass	6mm Glass
Resolution (H)	350 Lines	640 X 480 VGA	1280 x 960 SXGA
Light Sensitivity	1.0 Lux	3.0 Lux	2.0 Lux
Magnification	30:1 or Greater	30:1 or Greater	30:1 or Greater
Focal Distance	1" (2.6mm) to Infinity	1" (2.6mm) to Infinity	1" (2.6mm) to Infinity
Audio	No	No	No
Button Controls	No	No	No
Software	No	Applied Vision™ Software for Windows® KenA-Vision® Capture for Macintosh®	Applied Vision™ Software for Windows®
Cable Length	Pre-attached 12' (3.7 meters) Video	Pre-attached 5' (1.5 meters) USB	Pre-attached 5' (1.5 meters) USB
Warranty	1 Year	1 Year	1 Year

Specifications subject to change without notice

## BookCAM & ShopCAM



Now teachers can use the BookCAM visual presenter to expand students' minds while reading. Simply connect the pre-attached video cable to a TV monitor or multimedia projector and clip the camera to your book. This unique camera allows you to view the picture on a monitor just as you see it! Watch your students get excited about reading while they read along with you.

The ShopCAM is a flexible gooseneck video camera that clips to a variety of surfaces. Simply connect the pre-attached video cable to a TV monitor or multimedia projector and the camera will display enlarged objects up to 50x for presentation. When demonstrating to a group, you save time, and stimulate communication. Using the ShopCAM, your students will retain more visual knowledge when viewing intricate details.

SPECIFICATIONS		
Catalog #	7811	7821
Weight	2 lbs / 0.91 kgs	2 lbs / 0.91 kgs
Dimension	7"L X 7"W X 25"H 17.8cm X 17.8cm X 63.5cm	7"L X 7"W X 25"H 17.8cm X 17.8cm X 63.5cm
Box Weight	6 lbs / 2.8 kgs	6 lbs / 2.8 kgs
Box Dimension	13"L X 8"W X 8"H 33 cm X 20.3 cm X 20.3 cm	13"L X 8"W X 8"H 33 cm X 20.3 cm X 20.3 cm
Output	Composite (NTSC or PAL)	Composite (NTSC or PAL)
Connection	Video (RCA)	Video (RCA)
Lens	6mm Glass	6mm Glass
Resolution (H)	350 Lines	350 Lines
Light Sensitivity	1.0 Lux	1.0 Lux
Magnification	30:1 or Greater	30:1 or Greater
Focal Distance	1" (2.6mm) to Infinity	1" (2.6mm) to Infinity
Audio	No	No
Button Controls	No	No
Cable Length	Pre-attached 12' (3.7 meters) Audio/Video	Pre-attached 12' (3.7 meters) Audio/Video
Warranty	1 Years	1 Years

Specifications subject to change without notice



1-816-353-4787 [www.ken-a-vision.com](http://www.ken-a-vision.com)

# Video Flex Explorer



The Video Flex® Explorer will meet all your needs without exceeding your budget. It's the ideal solution when seeking portability and versatility. The 40-inch neck can be coiled into a base for microscope applications, or can be wrapped around a telescope, object, or person to provide a unique point of view.

## Features

- Baseless Construction
- Light Weight
- Poly-Carbonate Build
- C-Mount Lens
- Quick Focus™
- 450 Lines of Resolution
- Portable



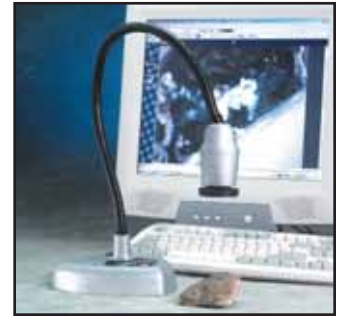
## SPECIFICATIONS

Catalog #	2100
Weight	1.54 lbs / 0.7 kgs
Dimension	40" Neck / 101.6 cm
Box Weight	5 lbs / 2.3 kgs
Box Dimension	15"L X 11"W X 7"H 38.1 cm X 27.9 cm X 17.8 cm
Output	Composite (NTSC or PAL)
Connection	Video (RCA)
Lens	8mm Interchangeable C-mount
Resolution (H)	450 Lines
Light Sensitivity	1.0 Lux
Magnification	50:1 or Greater
Focal Distance	1/4" (6mm) to Infinity
Cable Length	12' (3.7 meters) Video
Warranty	2 Years

Specifications subject to change without notice

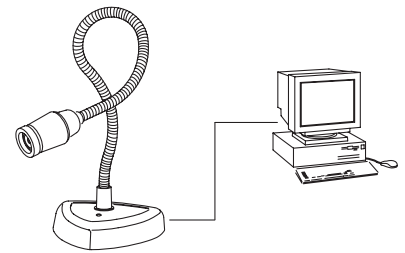
# Megapixel Digital Video Flex

Ken-A-Vision® created the NEW USB 2.0, High resolution Megapixel Digital Video Flex® with a glass lens and Quick Turn Focus. Complete with Applied Vision™ Software for Windows®, this powerful analysis tool enhances learning by capturing details you might otherwise miss.



## Features

- 1280 X 960 SXGA Resolution
- C-mount Lens
- Quick Focus™
- 2.0 Lux
- Kensington Security Slot
- Discovery Scope Kit
- Carry Case



## SPECIFICATIONS

Catalog #	7200U	7200UM
Output	Digital	Digital
Weight	5.95 lbs / 2.70 kgs	5.95 lbs / 2.70 kgs
Dimension	7"L X 7"W X 28"H 17.8 cm X 17.8 cm X 71.7 cm	7"L X 7"W X 28"H 17.8 cm X 17.8 cm X 71.7 cm
Box Weight	16 lbs / 7.26 kgs	16 lbs / 7.26 kgs
Box Dimension	18"L X 8.5"W X 14"H 45.7 cm X 21.6 cm X 35.6 cm	18"L X 8.5"W X 14"H 45.7 cm X 21.6 cm X 35.6 cm
Connection	USB 1.1	USB 2.0 / 1.1
Lens	8mm Interchangeable C-mount	8mm Interchangeable C-mount
Resolution (H)	640 X 480	1280 X 960 SXGA
Light Sensitivity	3.0 Lux	2.0 Lux
Magnification	50:1 or Greater	50:1 or Greater
Focal Distance	1/4" (6mm) to Infinity	1/4" (6mm) to Infinity
Audio	No	No
Button Controls	No	No
Software	Applied Vision™ for Windows® Ken-A-Vision® Capture for Macintosh®	Applied Vision™ Software for Windows®
Cable Length	Pre-attached 5' (1.5 meters) USB	Pre-attached 5' (1.5 meters) USB
Warranty	5 Years	5 Years

Specifications subject to change without notice



# Video Flex



No matter what the subject Video Flex® Cameras breathe new life into lectures, demonstrations and experiments by enlarging a blade of grass, a circuit board or anything you are presenting. The Video Flex line of cameras comes in a number of different connections, Video, S-Video or Digital.

## Features

- USB, Composite, & S-Video Outputs
- C-mount Lens
- Quick Focus™
- Microphone
- Discovery Scope Kit
- Carry Case
- Adjustable Contrast
- Positive / Negative Switch
- Fluorescent Control
- Kensington Security Slot



## SPECIFICATIONS

	7100	7300	7600
Catalog #	7100	7300	7600
Weight	5.95 lbs / 2.70 kgs	5.95 lbs / 2.70 kgs	5.95 lbs / 2.70 kgs
Dimension	7"L X 7"W X 28"H 17.8 cm X 17.8 cm X 71.7 cm	7"L X 7"W X 28"H 17.8 cm X 17.8 cm X 71.7 cm	7"L X 7"W X 28"H 17.8 cm X 17.8 cm X 71.7 cm
Box Weight	10 lbs / 4.55 kgs	15 lbs / 6.8 kgs	16 lbs / 7.26 kgs
Box Dimension	16"L X 8"W X 9"H 40.6 cm X 20.3 cm X 22.9 cm	18"L X 8.5"W X 14"H 45.7 cm X 21.6 cm X 35.6 cm	18"L X 8.5"W X 14"H 45.7 cm X 21.6 cm X 35.6 cm
Output	Composite (NTSC or PAL)	Composite & S-Video (NTSC or PAL)	Digital, Composite & S-Video (NTSC or PAL)
Connection	Video (RCA)	Video (RCA), S-Video & Audio (RCA)	Video (RCA), S-Video, Audio (RCA) & USB 1.1
Lens	8mm Interchangeable C-mount	8mm Interchangeable C-mount	8mm Interchangeable C-mount
Resolution (H)	500 Lines	500 Lines	500 Lines
Light Sensitivity	1.5 Lux	1.5 Lux	1.5 Lux
Magnification	50:1 or Greater	50:1 or Greater	50:1 or Greater
Focal Distance	1/4" (6mm) to Infinity	1/4" (6mm) to Infinity	1/4" (6mm) to Infinity
Audio	Yes	Yes	Yes
Button Controls	No	Contrast Control Positive/Negative Control Fluorescent Control	Contrast Control Positive/Negative Control Fluorescent Control
Software	No	No	Applied Vision™ Software for Windows® Ken-A-Vision® Capture for Macintosh®
Cable Length	12' (3.7 meters) Audio/Video	12' (3.7 meters) Audio/Video & 6' (1.8 meters) USB	12' (3.7 meters) Audio/Video & 6' (1.8 meters) USB
Warranty	5 Years	5 Years	5 Years

Specifications subject to change without notice



1-816-353-4787 [www.ken-a-vision.com](http://www.ken-a-vision.com)



# Microprojector 2

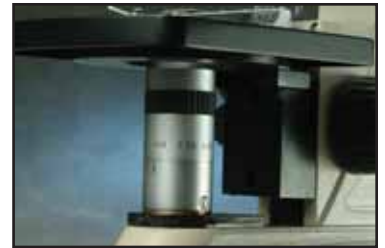
## Inverted Light Rheostat

- Cool operational upper light source
- Rheostat controlled light source
- Magnified light source for additional working distance
  - Slides
  - Petri Dishes
  - Thin or Thick Sections
  - Large Semi-transparent Objects



## Zoom Objective

- Zoom objective for easy teaching and presentation
- Smooth transition
- Hassle free set-up
- Cost effective



## Floating Stage

- Ken-A-Vision multi-directional floating stage
- Sealed for wet samples
- Ease of operation and positioning
- Mechanical Stage



Ken-A-Vision® introduces the 21st century "state-of-the-art" version of its Microprojector! This new inverted microscope has an zoom objective lens and technology that connects directly to your multimedia projector or computer monitor. Ken-A-Vision is again reinventing the way science is taught.

### SPECIFICATIONS

Catalog #	X2000	X2000-1
Weight	7.7 lbs / 3.5 kgs	7.7 lbs / 3.5 kgs
Dimension	8.25"L X 6.5"W X 12"H 21 cm X 16.5 cm X 30.5 cm	8.25"L X 6.5"W X 12"H 21 cm X 16.5 cm X 30.5 cm
Box Weight	15 lbs / 8 kgs	15 lbs / 8 kgs
Box Dimension	20"L X 14"W X 10"H 50.8 cm X 35.6 cm X 25.4 cm	20"L X 14"W X 10"H 50.8 cm X 35.6 cm X 25.4 cm
Objective Lens	3x - 30x Zoom	3x - 30x Zoom
Magnification	Up to 300x	Up to 300x
Focus Adjustment	Coarse & Fine	Coarse & Fine
Stage	Floating with Mechanical Clips	Floating with Mechanical Clips
Mechanical Stage	Included	Included
Light Source	Powered by Ken-A-Vision® Cool Lighting	Powered by Ken-A-Vision® Cool Lighting
Resolution (H)	1024 X 768	1024 X 768
Output Signal	Analog XGA	Analog XGA
Comes with LCD Projector	No	Yes
Warranty	5 Years on Microscope, 90 Days on Camera	5 Years on Microscope, 90 Days on Camera
Specifications subject to change without notice		

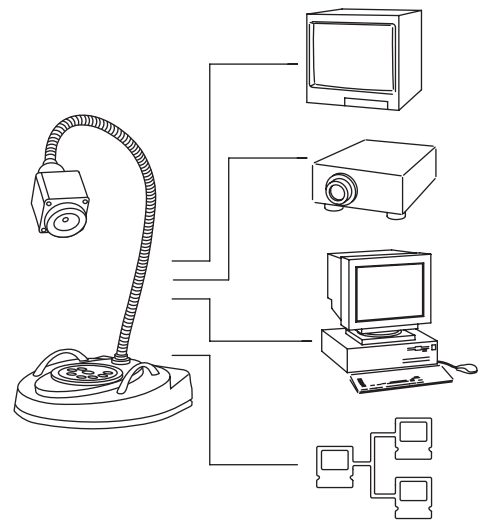
1-816-353-4787 [www.ken-a-vision.com](http://www.ken-a-vision.com)

# MVP-100



The MVP-100 is the first camera of its kind. It has a durable exterior finish boasting aluminum construction to meet the rigors of daily use. The Multi Video Product or MVP is a line of high resolution cameras with multiple signal outputs. The MVP-100 has high resolution output signals for RCA, USB, VGA and Network. This camera comes complete with Applied Vision™ Software for USB. The RJ-45 or network output works with Internet Explorer and does not require any installed software. The RCA output is ideal for VCRs, televisions or multimedia projectors, while the VGA input and output (15 pin D Sub) is designed to maximize the interaction of your computer and multimedia projector. Manage your audio visual electronics through the easy-to-use touch pad.

## Manage All of Your Connections!



### SPECIFICATIONS

Catalog #	MVP-100
Weight	9.54 lbs / 4.33 kgs
Dimension	8.5"L X 10"W X 30"H / 21.6 cm X 25.4 cm X 76.2 cm
Box Weight	16 lbs / 7.3 kgs
Box Dimension	20"L X 14"W X 10"H / 50.8 cm X 35.6 cm X 25.4 cm
Output / Connection	Network: RJ-45 Digital: USB Video: RCA & VGA (In & Out) Audio: RCA
Lens	8mm glass
Resolution (H)	800 X 600
Light Sensitivity	0.5 Lux
Magnification	50:1 or greater
Focal Distance	6mm to infinity
Audio	Yes (RCA)
Button Controls	Positive/Negative, Mirror, Dark, Bright, Computer, Iris Freeze, XGA, Split
Software	Applied Vision™ Software for Windows® Ken-A-Vision® Capture for Macintosh®
Warranty	5 Years
Specifications subject to change without notice	



1-816-353-4787 [www.ken-a-vision.com](http://www.ken-a-vision.com)



## All Aluminum Head Construction

- Only One in its Class
- Durable
- Easy to Position Head
- Complete with Quick Focus™ Lens



## Media Management

- Switch between Computer, Projector, & Monitor
- Manage XGA Connections
- Positive/Negative Control
- Darken & Brighten Images



## All Connections for Media Solutions

- RJ-45 – Network Connection
- USB – Digital to Computer
- RCA – Composite Video & Audio
- VGA – Video

# Applied Vision Software



Ken-A-Vision® created its Applied Vision™ Software to allow effortless presentations by the user. From the classroom to the seminar/conference room, Applied Vision™ helps you capture the attention of the audience, and keep them tuned into every image projected. This feature rich software lets you capture an image, as you teach, and enhance it by making notations, highlighting specific areas, and adding text to the picture for accenting and completeness. Images can be exported for insertion. Images, time-lapse sequences, time-lapse movies and digital movies can be incorporated into presentation software. Applied Vision™ also allows for video streaming, so images can be selected by on any computer on a Local Area Network (LAN) throughout a building or system. Applied Vision™ also works seamlessly with all interactive white boards, giving the user complete control during demonstrations.

## Features

- Easy to launch toolbars
- Different backgrounds to customize your presentation
- On screen camera management
- Broadcast around a room with live full screen video
- Artist pallet for notating on images
- "Oops" buttons to undo, redo and set-up presentations
- Amalgamate and compare images with joystick alignment
- Calibrated measuring system
- Export measurements into Microsoft® Excel
- Export images to be placed in other presentation programs like Microsoft® PowerPoint
- Software may be freely used on multiple computers
- Capture stills and time-lapse stills with a simple click of a mouse
- Record movies and time lapse movies with a simple click of a mouse

## Internet Technologies

- Stream Live Video Across a Network
- FTP Uploading Places Captured Images Online Automatically
- Email Captured Images and Movies

**NEW** for Fall 2006

## APPLIED VISION 3!

This software upgrade will have many new features to help you get the picture you are looking for.

- Multi-language
- View Multiple Cameras Simultaneously
- New Gallery
- Side by Side Image Comparisons
- Interactive White Board Compliant
- and much much more....

### SPECIFICATIONS

Operating System	Windows 98/ME/2000/XP
Connection	USB 1.1 Port
Minimum Computer Hardware	433 MHz, 128 MB RAM, 8 MB Video
Specifications subject to change without notice	



1-816-353-4787 [www.ken-a-vision.com](http://www.ken-a-vision.com)





## Capture, Notate and Save Files in Many Formats:

- Still Images & Movies
- Time-lapse Capturing with Multiple Still Images
- Time-lapse Movies
- Drawing & Writing Tools
- Magnify & Highlight Areas



## Measure and Record Distance Between Points

- Measure the Length of a Line
- Measure an Area Within an Ellipse
- Export the Recorded Measurements into a Microsoft® Spreadsheet
- Set Multiple Measurement Standards

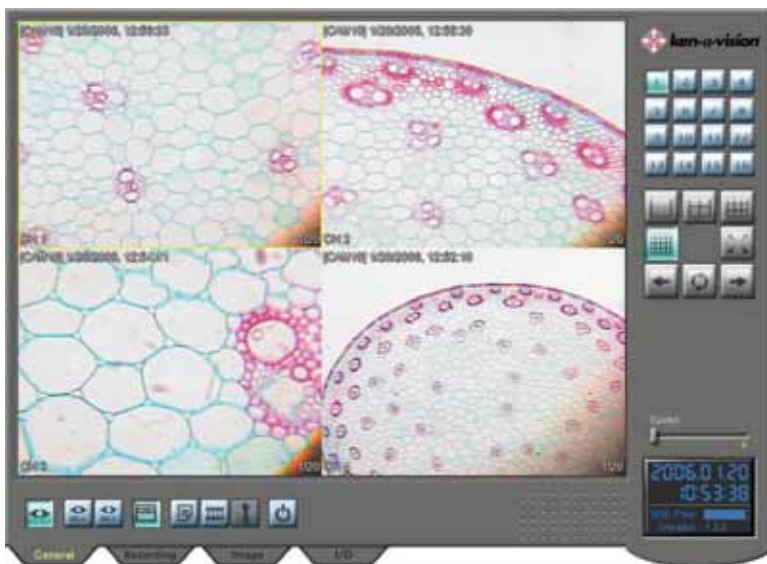


## Amalgamate

- Various Algorithms
- Compare & Overlay Stills
- Joystick Positioning of Stills to Properly Align and Compare



# Ken-A-Vision Network Software



This NEW Ken-A-Vision® Network Software is the perfect multiple camera management tool! View and capture 1 to 16 Ken-A-Vision Network cameras from one control station computer. With this software you can manage a classroom from your desk or monitor product quality control in a factory from an office.

## Features

- Observe Images from 1 to 16 Ken-A-Vision Network Cameras Simultaneously through a Network Connection
- Observe Combinations of 1, 4, 9, or 16 Ken-A-Vision Network Camera Stations with a Click of a Button on the Software Screen
- Capture Images and Record Movies from any of 1 to 16 Ken-A-Vision Network Camera Stations
- Software Provides an On Screen Date and Time Window
- Record on Control Station Computer Any Images Captured and Stored on Any Individual Ken-A-Vision Network Camera
- Manage and View Multiple Locations from one Control Station Computer



See Page 22



## SPECIFICATIONS

Operating System	Windows 98/ME/2000/XP
Connection	USB 1.1 Port
Minimum Computer Hardware	433 MHz, 128 MB RAM, 8 MB Video
Specifications subject to change without notice	



1-816-353-4787 [www.ken-a-vision.com](http://www.ken-a-vision.com)

# Professor Microscope by Ken-A-Vision®



Ken-A-Vision® designed this line with the younger students in mind. Constructed with high impact plastic, non-removable parts, one knob focusing and glass optics, the Professor Microscopes are a cost-effective way for students to learn microscopy.

**ESH100**  
Compound Microscope

**ESH200**  
Stereo Microscope

**ESHCADDY**  
The Professor Caddy is a great addition to your purchase of either Professor 10-packs. All 10 of the Professors fit inside this bag making them easy to transport or store.



## SPECIFICATIONS

Catalog #	ESH100	ESH200 (Available March 2006)
Weight	0.92 lbs / 0.42 kgs	
Dimension	5.75"W X 9.5"H 14.75 cm X 23.8 cm	
Box Weight	3 lbs / 1.4 kgs	
Box Dimension	13"L X 7.5"W X 5.5"H 33 cm X 19.1 cm X 14 cm	
Microscope Type	Compound	Stereo
Eyepiece	10x	
Head	45° angle fixed	
Objective	4x, 10x, 40x	
Power Source	3 AA Batteries	
High Impact Plastic Body	Yes	
10-Pack Option	ESH110	
Organizational Animal Stickers	ESH110	
Warranty	1 Year	
Specifications subject to change without notice		

# Cordless PrepScope

This compact microscope is designed with the optical quality and ruggedness needed to withstand student use. The Cordless PrepScope offers ease of use and a solution for classrooms with limited electrical outlets. It is also great for use as a portable outdoor instrument.



## Features

- Rechargeable NiMH Batteries
- 40 Hours of Use on a Single Charge
- 45° Angle, 360° Rotating Prism Head
- Low Position Focusing
- High Density Plastic Covered Metal Base

POWERED BY



## SPECIFICATIONS

Catalog #	T-1201C	T-1202C
Weight	4 lbs / 2 kgs	4 lbs / 2 kgs
Dimension	6"L X 4"W X 12"H 15.2 cm X 10.2 cm X 30.5 cm	6"L X 4"W X 12"H 15.2 cm X 10.2 cm X 30.5 cm
Box Weight	6 lbs / 2.8 kgs	6 lbs / 2.8 kgs
Box Dimension	15"L X 11"W X 7"H 38.1 cm X 28 cm X 17.8 cm	15"L X 11"W X 7"H 38.1 cm X 28 cm X 17.8 cm
Head Type	Monocular	Dual Opposing
10x Widefield Eyepiece with Pointer	Yes	Yes
Objective Lens	4x, 10x, 40xR DIN	4x, 10x, 40xR DIN
Stage Clips	Spring Loaded	Spring Loaded
Disc Diaphragm with Six Apertures	Yes	Yes
Coarse/Fine Focusing in One Knob	Yes	Yes
Powered By Ken-A-Vision Lighting	Yes	Yes
Power Source	NiMH Batteries	NiMH Batteries
Non Cordless Model	T-1201	T-1202
Warranty	10 Years	10 Years
Specifications subject to change without notice		



# Cordless CoreScope



Ken-A-Vision® introduces the Cordless CoreScope. This microscope has all the features and benefits of the Powered by Ken-A-Vision® Technology. Plus, it has a multi-directional round floating stage, so no mechanical stage is necessary. Separate coarse and fine focusing knobs make it easier for the student to operate.

## Features

- Multi-directional Round Floating Stage
- Rechargeable NiMH Batteries
- 40 Hours of Use on a Single Charge
- 45° Angle, 360° Rotating Prism Head
- Separate Coarse & Fine Focusing Knobs
- High Density Plastic Covered Metal Base



SPECIFICATIONS		
Catalog #	T-1701C	T-1702C
Weight	4 lbs / 2 kgs	4 lbs / 2 kgs
Dimension	6"L X 4"W X 12"H 15.2 cm X 10.2 cm X 30.5 cm	6"L X 4"W X 12"H 15.2 cm X 10.2 cm X 30.5 cm
Box Weight	6 lbs / 2.8 kgs	6 lbs / 2.8 kgs
Box Dimension	15"L X 11"W X 7"H 38.1 cm X 28 cm X 17.8 cm	15"L X 11"W X 7"H 38.1 cm X 28 cm X 17.8 cm
Head Type	Monocular	Dual Opposing
10x Widefield Eyepiece with Pointer	Yes	Yes
Objective Lens	4x, 10x, 40xR DIN	4x, 10x, 40xR DIN
Stage Clips	Spring Loaded	Spring Loaded
Multi-directional Round Floating Stage	Yes	Yes
Coarse & Fine Coaxial Focal Adjustment	Yes	Yes
Powered By Ken-A-Vision Lighting	Yes	Yes
Power Source	NiMH Batteries	NiMH Batteries
Non Cordless Model	T-1701	T-1702
Warranty	10 Years	10 Years

Specifications subject to change without notice

# Cordless Modular Comprehensive Scope

The Modular Constructed Scope is a professionally equipped instrument priced within the educational budget. The series provides quality DIN optics. All models have many optional features (see chart below). It's an educational bargain with both flexibility and real value! Excellent for high schools, colleges and universities.



## Features

- Light Rheostat for Better Light Control
- 45° Angle, 360° Rotating Prism Head
- Rechargeable NiMH Batteries
- 40 Hours of Use on a Single Charge



SPECIFICATIONS			
Catalog #	T-1901C	T-1902C	T-1903C
Weight	11 lbs / 5 kgs	11 lbs / 5 kgs	11 lbs / 5 kgs
Dimension	8.5"L X 6.5"W X 15"H 21.6 cm X 16.5 cm X 38.1 cm	8.5"L X 6.5"W X 15"H 21.6 cm X 16.5 cm X 38.1 cm	8.5"L X 6.5"W X 15"H 21.6 cm X 16.5 cm X 38.1 cm
Box Weight	13 lbs / 6.8 kgs	13 lbs / 6.8 kgs	13 lbs / 6.8 kgs
Box Dimension	20"L X 14"W X 10"H 50.8 cm X 35.6 cm X 25.4 cm	20"L X 14"W X 10"H 50.8 cm X 35.6 cm X 25.4 cm	20"L X 14"W X 10"H 50.8 cm X 35.6 cm X 25.4 cm
Head Type	Monocular	Dual Opposing	Binocular
10x Widefield Eyepiece(s) with Pointer	Yes	Yes	Yes
Objective Lens	4x, 10x, 40xR DIN	4x, 10x, 40xR DIN	4x, 10x, 40xR, 100xR DIN
Mechanical Stage, Abbe Condenser & 100xR Lens	Optional	Optional	Yes
Disc Diaphragm with Six Apertures	Yes	Yes	No
Coarse & Fine Coaxial Focal Adjustment	Yes	Yes	Yes
Powered By Ken-A-Vision Lighting	Yes	Yes	Yes
Power Source	NiMH Batteries	NiMH Batteries	NiMH Batteries
Non Cordless Model	T-1901	T-1902	T-1903
Non Cordless With Fluorescent Light	T-1901F	T-1902F	T-1903F
Warranty	10 Years	10 Years	10 Years

Specifications subject to change without notice



1-816-353-4787 [www.ken-a-vision.com](http://www.ken-a-vision.com)



# Cordless VisionScope



Introducing the first advanced, full-size, cordless stereo microscope. Ken-A-Vision's uniquely designed Cordless VisionScopes provide up to 20 hours of continuous operation from a single charge equal to 20 watts of light. The unique rubber base provides extra stability. An interchangeable head lets you choose from a rotating turret (T-2200C series) or Zoom (T-2600C).

## Features

- Interchangeable Heads with All Models Except T-2400C
- High Quality Optics
- Dual Rocker Switches with Separate ON/OFF Switch for Transmitted & Incident Lighting (T-2200C & T-2600C Series)
- Lighting is Incident, Transmitted or Both (T-2200C & T-2600C Series)
- Rechargeable NiMH Batteries
- 20 Hours of Use on a Single Charge



SPECIFICATIONS			
Catalog #	T-2200C	T-2600C	T-2400C
Weight	12 lbs / 6 kgs	12 lbs / 6 kgs	4.2 lbs / 1.9 kgs
Dimension	8.75" L X 7" W X 13.25" H 22.2 cm X 17.8 cm X 33.7 cm	8.75" L X 7" W X 13.25" H 22.2 cm X 17.8 cm X 33.7 cm	7" L X 4.5" W X 12" H 17.8 cm X 2 cm X 30.5 cm
Box Weight	15 lbs / 6.8 kgs	16 lbs / 7.3 kgs	8 lbs / 3.6 kgs
Box Dimension	20" L X 14" W X 10" H 50.8 cm X 35.6 cm X 25.4 cm	20" L X 14" W X 10" H 50.8 cm X 35.6 cm X 25.4 cm	15" L X 11" W X 7" H 38.1 cm X 28 cm X 17.8 cm
Head Type	45° Angle Binocular	45° Angle Binocular	Vertical Binocular
Widefield Eyepiece	10x	10x	10x
Objectives	1x & 3x	Zoom 1x – 4x	2x
Coarse/Fine Focusing in One Knob	Yes	Yes	Yes
Powered By Ken-A-Vision Lighting	Yes	Yes	Yes
Power Source	NiMH Batteries	NiMH Batteries	NiMH Batteries
Non Cordless Model	T-2200	T-2600	T-2400
Light Rheostat	Yes	Yes	No
Stage Plate	Frosted	Frosted	Frosted
Warranty	10 Years	10 Years	10 Years
Specifications subject to change without notice			

# Multicharger

A microprocessor for each charging station controls the charge to each unit being charged, prevents overcharging and is energy efficient. It charges the NiMH (Nickel Metal Hydride) batteries found within Ken-A-Vision® Cordless Microscopes within eight hours. Great for charging your microscope while they are being stored.



## Features

- Eight Stations for Charging Ken-A-Vision Cordless Microscopes (Pre-attached 6' Cables)
- LED Meter Indicators Display the Percentage Amount of the Charge Received
- LED Station Indicators with Red and Green Lights Let You Know When Your Microscope Is Charging and When It is Fully Charged
- Charging Time: 8 Hours
- One Electrical Wall Connection to Charge 8 Cordless Microscopes
- Independent Charge with Each Station

SPECIFICATIONS	
Catalog #	SCGN06
Weight	4 lbs / 1.8 kgs
Dimension	5.5" L X 8.5" W X 1.75" H 14 cm X 21.6 cm X 4.5 cm
Box Weight	5 lbs / 2.3 kgs
Box Dimension	15" L X 11" W X 7" H 38.1 cm X 28 cm X 17.8 cm
Optional 230v	SCGN06-230
Warranty	1 Year
Specifications subject to change without notice	

1-816-353-4787 www.ken-a-vision.com



# Comparison Scope



The Comparison Scope by Ken-A-Vision® is the perfect classroom tool for teaching forensics or any comparison science. It allows side-by-side comparison of two slides as well as the ability to view each slide individually. The high-quality optics, and precision mechanics are a great value.

## Features

- Side-by-side Comparisons of "Evidence"
- Histology Comparison
- Each Microscope Focuses Independently
- Object or Microscope Slide
- Each Side can be Viewed in a Full Field Independently or Together in a Split Screen

## Applications

- Forensics: Shell Casings, Hair Samples
- Slide Comparison: Species Differences, Tissue Type Differences, Embryos, Normal vs. Abnormal Cells

## Comparisons



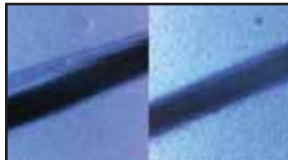
Bullet Casings



Red Hair



Mitosis



Badger/Skunk

## SPECIFICATIONS

Catalog #	T-1922
Weight	24.6 lbs / 11.2 kgs
Dimension	8.25"L X 15.5"W X 21"H 21.6 cm X 39.4 cm X 53 cm
Box Weight	32 lbs / 14.5 kgs
Box Dimension	21"L X 15.5"W X 8.25"H 53 cm X 39.4 cm X 21.6 cm
Head Type	45° Inclined Seidentopf Binocular
Eyeiece	(2) 10x Widefield with Pointer
Objective lens	(2) 4x, 10x, 40xR DIN
Degree of Change	0-100
Stage	Mechanical
Focus Adjustment	Coarse & Fine Coaxial
Light	20 Watt Tungsten
Condenser	Abbe 1.25 NA
Cordless Model	T-1922C
Warranty	10 Years
Specifications subject to change without notice	

# Research Scope



Performance and comfort make this a leading choice in education, laboratories, and universities. Ergonomic design, rugged construction and simple operating procedures make this microscope the microscope of choice. All of our Research Scopes are value-priced with high quality optics. A trinocular head for camera mounting is an option.

## Features

- High Quality Optics
- Dual-diopter Eyepiece Tubes
- Tucked Reverse Quadruple Nosepiece
- DIN Objectives; Flatfield, Parfocal, Parcentered
- 360° Rotating Inclined Head

SPECIFICATIONS			
Catalog #	T-2701	T-2703	T-3300
Weight	15 lbs / 8 kgs	15 lbs / 8 kgs	15 lbs / 8 kgs
Dimension	9"L X 8"W X 15"H 22.9 cm X 20.3 cm X 38.1 cm	9"L X 8"W X 15"H 22.9 cm X 20.3 cm X 38.1 cm	7"L X 9"W X 14.5"H 17.8 cm X 22.9 cm X 36.7 cm
Box Weight	20 lbs / 9 kgs	20 lbs / 9 kgs	18 lbs / 8.2 kgs
Box Dimension	20"L X 16"W X 13"H 50.8 cm X 40.6 cm X 33 cm	20"L X 16"W X 13"H 50.8 cm X 40.6 cm X 33 cm	20"L X 16"W X 13"H 50.8 cm X 40.6 cm X 33 cm
Head Type	30° Angle Seidentopf Binocular	30° Angle Trinocular	45° Angle Binocular
Widefield Eyepieces With Pointer	10x	10x	10x
Achromat Objective Lens	4x, 10x, 40xR, 100xR DIN	4x, 10x, 40xR, 100xR DIN	4x, 10x, 40xR, 100xR DIN
Coarse & Fine Coaxial Focal Adjustment	Yes	Yes	Yes
Rack & Pinion Abbe (NA 1.25 Condenser)	Yes	Yes	Yes
Low Position Coaxial Mechanical Stage	Yes	Yes	Yes
Iris Diaphragm	Yes	Yes	Yes
Light Rheostat	Yes	Yes	Yes
Warranty	10 Years	10 Years	10 Years

Specifications subject to change without notice

# Research Scope



A NEW Clinical, Research and/or Classroom Microscope by Ken-A-Vision® that is ergonomically designed and affordably priced!! This microscope is equipped with all the performance and comfort features you come to expect from Ken-A-Vision and is perfect for any classroom or laboratory.

## Features

- Highly stable, ergonomic base brings all adjustable controls toward the user for easy access.
- Variable rheostat light control
- Rack and pinion condenser with aperture (iris) diaphragm allowing Köhler illumination.
- Adjustable (horizontally and vertically) Abbe Condenser
  - \* Rack and pinion condenser vertical control
  - \* Adjustment screws for condenser/diaphragm centering
- Adjustable Field Diaphragm ( $f$  0.2 to  $f$  2.8)
- Swing out filter holder
- 30 watt halogen light source

SPECIFICATIONS	
Catalog #	T-2801
Weight	20 lbs / 9 kgs
Dimension	10.75"L X 7.5"W X 16.5"H 27.5 cm X 18 cm X 42 cm
Box Weight	24 lbs / 10.8 kgs
Box Dimension	20" L X 16" W X 13"H 50.8 cm X 40.6 cm X 33 cm
Head Type	45° Angle Seidentopf Binocular
Widefield Eyepieces With Pointer	10x
Achromat Objective Lens	4x, 10x, 40xR, 100xR DIN
Coarse & Fine Coaxial Focal Adjustment with Tension Adjustment	Yes
Rack & Pinion Abbe (NA 1.25 Condenser)	Yes
Low Position Coaxial Mechanical Stage	Yes
Iris Diaphragm	Yes
Light Rheostat	Yes
Warranty	10 Years

Specifications subject to change without notice

1-816-353-4787 www.ken-a-vision.com



# Microprojector



Our Microprojectors are effectively used from elementary to college level courses. They are also used for teaching visually impaired and physically challenged individuals. The Microprojector projects your microscopic images onto a wall or table for group viewing.

## Features

- Patented Cooling System
- Double Condensing System
- Heat Filter (protects specimen)
- 150 Watt Quartz Iodine Lamp
- Amalloy Aluminum Construction

### SPECIFICATIONS

Catalog #	X1000-1	TECH A-II	TRIG
Weight	25 lbs / 11.3 kgs	25 lbs / 11.3 kgs	25 lbs / 11.3 kgs
Dimension	13.5"L X 11.25"W X 27.25"H 34.3 cm X 28.6 cm X 69.2 cm	13.5"L X 11.25"W X 27.25"H 34.3 cm X 28.6 cm X 69.2 cm	13.5"L X 11.25"W X 27.25"H 34.3 cm X 28.6 cm X 69.2 cm
Box Weight	29 lbs / 13.2 kgs	29 lbs / 13.2 kgs	29 lbs / 13.2 kgs
Box Dimension	14"L X 14"W X 30"H 35.6 cm X 35.6 X 76.2 cm	14"L X 14"W X 30"H 35.6 cm X 35.6 X 76.2 cm	14"L X 14"W X 30"H 35.6 cm X 35.6 X 76.2 cm
Polarizing Lens	Yes	Yes	Yes
5x Auxiliary Lens	Yes	Yes	Yes
Fingertip Focus	No	Yes	Yes
Rack & Pinion	Yes	No	No
Turret Disk	Yes	No	Yes
10x (16mm) Objective Lens	Yes	Yes	Yes
20x (10mm) Objective Lens	Yes	Yes	No
43x (6.5mm) Objective Lens	Yes	Yes	No
10x Eyepiece Tube	Yes	No	Yes

Specifications subject to change without notice

# Digital PrepScope

The Digital PrepScope is a revolutionary design in digital microscopy. It is a cost-effective solution for capturing microscopic images. It is powered by USB to capture clear, sharp images directly to your computer, and can be used as a standard microscope or a digital microscope. A great addition to the middle, high school, and college classroom. It comes complete with Applied Vision™ Software for Windows® and Ken-A-Vision® Capture for Macintosh®.



## Features

- CMOS Camera
- Full Screen Imaging at 640 X 480 VGA
- Applied Vision™ Software for Windows®
- Ken-A-Vision® Capture for Macintosh®
- System Requirements  
Windows 98/ME/2000/XP  
MAC OS 8.6+  
USB 1.1 Port  
433 MHz, 128 MB RAM, 8 MB Video



### SPECIFICATIONS

Catalog #	T-1252	T-1252C
Weight	4 lbs / 1.8 kgs	4 lbs / 1.8 kgs
Dimension	6"L X 4"W X 11"H 15.2 cm X 10.2 cm X 28 cm	6"L X 4"W X 11"H 15.2 cm X 10.2 cm X 28 cm
Box Weight	6 lbs / 2.7 kgs	6 lbs / 2.7 kgs
Box Dimension	15"L X 11"W X 7"H 38.1 cm X 28 cm X 17.8 cm	15"L X 11"W X 7"H 38.1 cm X 28 cm X 17.8 cm
Head Type	Monocular	Monocular
10x Widefield Eyepiece with Pointer	Yes	Yes
Objective Lens	4x, 10x, 40xR DIN	4x, 10x, 40xR DIN
Disc Diaphragm with Six Apertures	Yes	Yes
Coarse/Fine Focusing in One Knob	Yes	Yes
USB – Digital	1.1	1.1
Cordless	No	Yes
Resolution (H)	640 X 480	640 X 480
Software	Applied Vision™ Software for Windows® Ken-A-Vision® Capture for Macintosh®	Applied Vision™ Software for Windows® Ken-A-Vision® Capture for Macintosh®
Warranty	10 Years on Scope, 1 Year on Camera	10 Years on Scope, 1 Year on Camera

Specifications subject to change without notice



1-816-353-4787 [www.ken-a-vision.com](http://www.ken-a-vision.com)



# Megapixel Digital Comprehensive Scope

Instantly produce high resolution digital images with the NEW Megapixel Digital Comprehensive Microscope from Ken-A-Vision®. Complete with Applied Vision™ Software for Windows®, this powerful analysis tool enhances learning by capturing details you might otherwise miss. It can be used with both USB 2.0 and 1.1.

## Features

- Built-in 1.3 Megapixel CMOS Camera
- Full Screen Imaging with 1280 X 960 SXGA Resolution
- Utilizes the USB 2.0 High Speed Connection but still Compatible with USB 1.1
- Applied Vision™ Software for Windows®
- Software Requirements
  - Windows 98/ME/2000/XP
  - USB 1.1 or 2.0 Port
  - 433 MHz, 128 MB RAM, 8 MB Video



## SPECIFICATIONS

Catalog #	T-1951	T-1952	T-1953	T-1954
Weight	10 lbs / 5 kgs	10 lbs / 5 kgs	10 lbs / 5 kgs	10 lbs / 5 kgs
Dimension	8.5"L X 5"W X 14.5"H 21.6 cm X 12.7 cm X 36.8 cm	8.5"L X 5"W X 14.5"H 21.6 cm X 12.7 cm X 36.8 cm	8.5"L X 5"W X 14.5"H 21.6 cm X 12.7 cm X 36.8 cm	8.5"L X 5"W X 14.5"H 21.6 cm X 12.7 cm X 36.8 cm
Box Weight	15 lbs / 8 kgs	15 lbs / 8 kgs	15 lbs / 8 kgs	15 lbs / 8 kgs
Box Dimension	20"L X 14"W X 10"H 50.8 cm X 35.6 cm X 25.4 cm	20"L X 14"W X 10"H 50.8 cm X 35.6 cm X 25.4 cm	20"L X 14"W X 10"H 50.8 cm X 35.6 cm X 25.4 cm	20"L X 14"W X 10"H 50.8 cm X 35.6 cm X 25.4 cm
Head Type	Monocular	Monocular	Monocular	Monocular
10x Widefield with Pointer	Yes	Yes	Yes	Yes
Objective Lens	4x, 10x, 40xR, 100xR DIN	4x, 10x, 40xR, 100xR DIN	4x, 10x, 40xR, 100xR DIN	4x, 10x, 40xR, 100xR DIN
Built-in Abbe Condenser	Yes	Yes	Yes	Yes
Coarse & Fine Coaxial Focal Adjustment	Yes	Yes	Yes	Yes
Low Position Coaxial Mechanical Stage	Yes	Yes	Yes	Yes
Resolution (H)	500 Lines	640 X 480	500 Lines	1280 X 960
Video (RCA)	Yes	No	Yes	No
USB – Digital	No	1.1	1.1	2.0 / 1.1
Warranty	10 Years On Scope 1 Year on Camera	10 Years On Scope 1 Year on Camera	10 Years On Scope 1 Year on Camera	10 Years On Scope 1 Year on Camera
Software	No	Applied Vision™ Software for Windows® Ken-A-Vision® Capture for Macintosh®	Applied Vision™ Software for Windows® Ken-A-Vision® Capture for Macintosh®	Applied Vision™ Software for Windows®

Specifications subject to change without notice

1-816-353-4787 [www.ken-a-vision.com](http://www.ken-a-vision.com)



# Memory Scope



Ken-A-Vision® introduces the Memory Scope. This microscope has its own memory chip, an easy to use touch panel and a LCD monitor attached to the head for viewing images. Connect the microscope to a TV, computer or the network so it can be viewed by a large audience. The Memory Scope has the high quality construction and service you have come to expect from Ken-A-Vision.

## Features

- Connections: Network: RJ-45, Digital: USB, Video: RCA
- Save up to 30 Images without the Computer



## LCD Screen

- Attached Adjustable LCD Screen
- View Live Images
- Viewing Recorded Images or Sequences of Images
- Comparing 1 to 3 Recorded Slides to Each Other or to the Live Picture



## Touch Keypad

- Access Menu
- Record Single or Time-lapse Images
- Play Back or Erase Images
- Create Split Screen Options



## Internal Imaging Chip

- Split Screen Options (1, 2 or 4 images simultaneously)
- Record Single or Time-lapse Images
- Erase Images
- Playback Single or Sequence of Images
- Create Comparisons Between Stored Images or Live and Stored Images



## Multiple Connections

- RJ-45 – Network Connection
- USB – Digital – Computer Connection
- RCA – Composite Video – Monitors or Multi-media Projectors

## SPECIFICATIONS

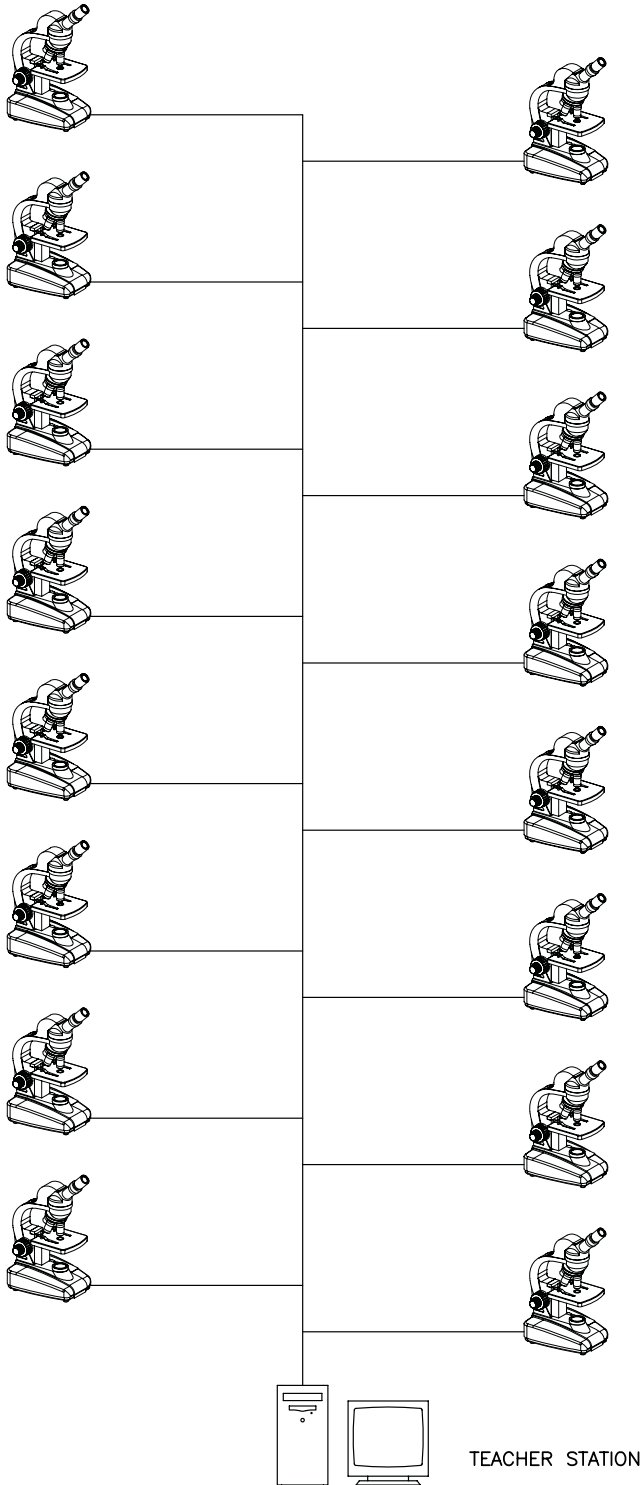
Catalog #	T-1955	T-1956
Weight	9.15 lbs / 4.2 kgs	9.15 lbs / 4.2 kgs
Dimension	8.5"L X 5"W X 14.5"H 21.6 cm X 12.7 cm X 36.9 cm	8.5"L X 5"W X 14.5"H 21.6 cm X 12.7 cm X 36.9 cm
Box Weight	14 lbs / 6.4 kgs	14 lbs / 6.4 kgs
Box Dimension	20"L X 14"W X 10"H 50.8 cm X 35.6 cm X 25.4 cm	20"L X 14"W X 10"H 50.8 cm X 35.6 cm X 25.4 cm
Head Type	45° Angle Monocular with Built-in Camera	45° Angle Monocular with Built-in Camera
Eyepiece	10x Widefield with Pointer	10x Widefield with Pointer
Objective Lens	4x, 10x, 40xR, 100xR DIN	4x, 10x, 40xR, 100xR DIN
Stage	Low Position Coaxial Mechanical	Low Position Coaxial Mechanical
Focus Adjustment	Coarse & Fine Coaxial	Coarse & Fine Coaxial
Condenser	Abbe 1.25 NA	Abbe 1.25 NA
Frame Rate	30 Frames Per Second	30 Frames Per Second
Resolution (H)	720 X 480	720 X 480
Multi-screen	1/2/4 Split Button Operation	1/2/4 Split Button Operation
Auto Record	1-255 Seconds or Frames	1-255 Seconds or Frames
Connections	Network: Digital: Video:	RJ-45 USB RCA
Removable Memory	No	Yes
Warranty	5 Years On Scope, 90 Days On Camera	5 Years On Scope, 90 Days On Camera

Specifications subject to change without notice Patent Pending



1-816-353-4787 [www.ken-a-vision.com](http://www.ken-a-vision.com)

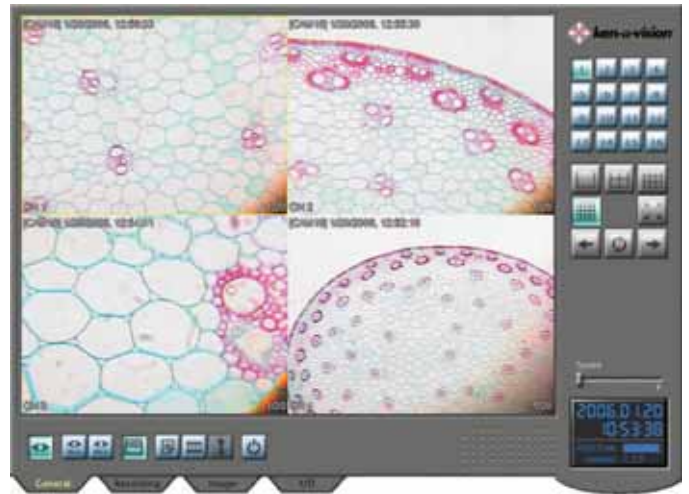
# Memory Scope Lab Package



The NEW Memory Scope Package is the perfect addition to any lab or classroom. It allows a single controlling station to monitor, capture images, and record movies from 1 to 16 Memory Scopes. Packages will be available in sets of 4, 8, 12 or 16 Memory Scopes, either models T-1955, T-1956 or a combination of these models. All packages will include various length network cables, one network hub, and Ken-A-Vision® Network Software (see page 10 of this catalog).

## Features

- Observe images From 1 to 16 Memory Scopes Simultaneously through a Network Connection
- Observe Combinations of 1, 4, 9, or 16 Network Memory Scopes Stations with a Click of a Button on the Software Screen
- Capture Images and Record Movies from any of 1 to 16 Networked Memory Scope Stations
- Software Provides an On Screen Date and Time Window
- Record On the Control Station Computer any Images Captured and Stored on the Individual Memory Scopes
- Monitor Multiple Labs at Once (Through LAN)
- See What Your Students are Viewing from Your Desk
- Record on Control Station Computer Any Images Captured and Stored on Any Individual Memory Scope



See Page 13



1-816-353-4787 www.ken-a-vision.com



**Ken-A-Vision® is the world leader in manufacturing,  
designing and providing quality visual aids.**



Based in Kansas City, Missouri, USA, for over 50 years, Ken-A-Vision is a recognized leader in providing superb vision aids for education, audio visual, research, and manufacturing applications. Ken-A-Vision has become known for its quality; some of Ken-A-Vision's most successful innovations have been in its Microprojector, Cordless Microscopes, and Video Flex Cameras lines.

For more information contact us today!

**816-353-4787**

**[www.ken-a-vision.com](http://www.ken-a-vision.com)**

**[solutions@ken-a-vision.com](mailto:solutions@ken-a-vision.com)**



Ken-A-Vision Mfg. Co., Inc.  
5615 Raytown Road  
Kansas City, MO 64133 USA  
[solutions@ken-a-vision.com](mailto:solutions@ken-a-vision.com)  
Fax: 816-358-5072

CAT-TOTAL 2006  
Printed in the U.S.A.

© 2006 Ken-A-Vision Mfg. Co., Inc. All rights reserved. Other trademark names may be of their prospective owners. No part of the contents of this publication may be reproduced or transmitted in any form without the written permission of Ken-A-Vision Mfg. Co., Inc. Ken-A-Vision reserves the right to make design improvement(s) and other changes with the latest advancements in technology. There is no obligation to make changes in products already manufactured.