

Receivers

RX-1028VBK

Audio/Video Control Receiver

Multi-Room
Multi-Source



- ◆ **Stereo:** 130 watts per channel, 8 ohms, 20Hz to 20kHz, with 0.02% THD; 130 watts per channel, 4 ohms, 20Hz to 20kHz, with 0.08% THD;
- ◆ **Surround: (Front)** 100 watts per channel, 8 ohms, 1kHz, 0.8% THD; **(Center)** 100 watts, 8 ohms, 1kHz, 0.8% THD; **(Rear)** 100 watts per channel, 8 ohms, 1kHz, 0.8% THD
- ◆ Dolby Digital/DTS decoders built-in
- ◆ Compatible with Multichannel audio (5.1 channel analog input and 5 separate amps)
- ◆ Multi-room/multi-source capability
- ◆ RF/IR illuminated multi-brand AV-CATV-DBS remote control with TEXT DISPLAY key
- ◆ 6-channel preamp output/Sub Room preamp output (left/right) (gold-plated)
- ◆ Advanced Super-A
- ◆ Banana-plug speaker terminals (all channels)
- ◆ High-rigidity Z-Chassis
- ◆ Optimized signal path and minimal contacts
- ◆ K2 Interface for all 6 channels
- ◆ 1-bit P.E.M. D.D. Converter for all 6 channels
- ◆ 3D-PHONIC
- ◆ Digital Acoustics Processor (DAP), with 4 preset sound fields
- ◆ Multi-Color On-Screen Display
- ◆ One Touch Operation
- ◆ Subwoofer output
- ◆ Center Tone control
- ◆ 3-band electronic S.E.A. equalization with 5 presets and 1 manual setting for each source
- ◆ 5 video inputs: DBS*, VCR 1, VCR 2, DVD, VIDEO (gold-plated)
- ◆ 4 audio inputs: PHONO, CD, TAPE/MD, TV SOUND* (gold-plated)
- ◆ 1 coaxial and 3 optical digital inputs with assignable function (DBS, CD, MD, DVD)
- ◆ S-video inputs (4)/outputs (2) (gold-plated)
- ◆ Loudness on/off
- ◆ VIDEO terminals on front (gold-plated)
- ◆ TEXT COMPU LINK
- ◆ AV COMPU LINK
- ◆ 15 AM and 30 FM station memory with character input for each station
- ◆ Auto TV power on
- ◆ Enhanced COMPU LINK Control System

*DBS and TV SOUND sources cannot be connected at the same time.



DVD Players

Be sure to couple a JVC receiver with a JVC DVD player, and enjoy the best in audio and video, plus integrated ease of use.

XV-D701BK



Video Features

- ◆ High-bit/high-sampling (10-bit/27MHz) video D/A converter
- ◆ Component video, S-video and composite video terminals
- ◆ VFP (Video Fine Processor) for fine picture adjustment

Audio Features

- ◆ Built-in Dolby Digital decoder ◆ DTS Digital Out ◆ K2 Interface
- ◆ 1-bit P.E.M. D.D. Converter with 96kHz/24-bit audio resolution ◆ Optical and coaxial digital outputs

Convenience and Versatility

- ◆ Multi-brand remote with joystick control ◆ "Illumi-Guide" Control
- ◆ GUI (Graphical User Interface) through on-screen display
- ◆ "Digest", "Zoom" and "Strobe" functions ◆ Coordinated home theater look ◆ AV COMPU LINK

XV-501BK



Video Features

- ◆ High-bit/high-sampling (10-bit/27MHz) video D/A converter
- ◆ Component video, S-video and composite video terminals
- ◆ VFP (Video Fine Processor) for fine picture adjustment

Audio Features

- ◆ 1-bit P.E.M. D.D. Converter with 96kHz/24-bit audio resolution
- ◆ DTS Digital Out ◆ Optical Digital Output

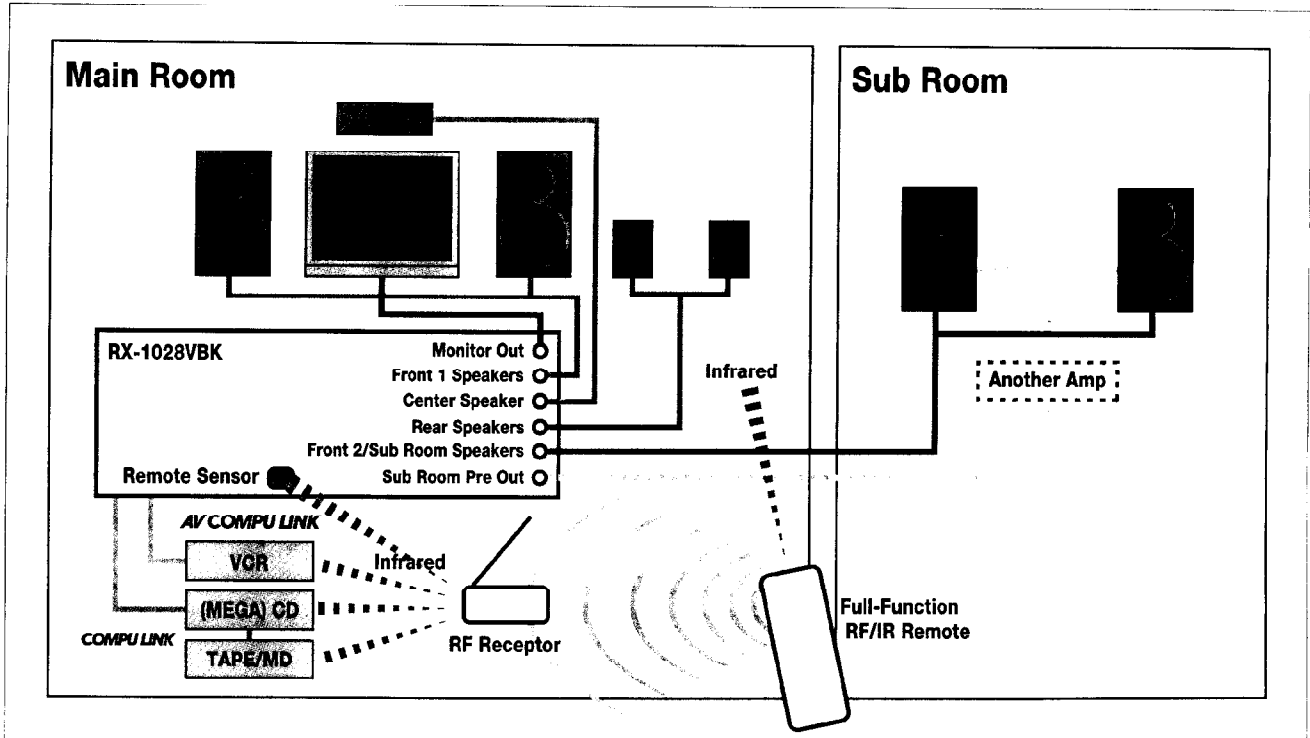
Convenience and Versatility

- ◆ Multi-brand remote with joystick control ◆ "Illumi-Guide" Control
- ◆ GUI (Graphical User Interface) through on-screen display
- ◆ "Digest", "Zoom" and "Strobe" functions ◆ Coordinated home theater look ◆ AV COMPU LINK

Multi-room/multi-source capability (RX-1028VBK): Extend audio enjoyment throughout your home



The RX-1028VBK lets you enjoy music anywhere in your home through the audio/video system set up in your living room. Its multi-room/multi-source capability allows two people to enjoy different sources in two rooms—DVD (or CD) in one and an FM rock station in the other, for example—at the same time.



Stereo reproduction in both Main and Sub Rooms: all it takes is an additional pair of speakers

The RX-1028VBK can supply two sets of stereo signals simultaneously to two sets of speakers in different locations—one set in the Main Room and the other in the Sub Room. To enjoy this advantage, just install the second set of speakers in the Sub Room and make the necessary connections.

Theater surround sound in the Main Room and stereo sound in the Sub Room: add a pair of speakers and an outboard stereo amplifier

Install an outboard amplifier in the Sub Room and connect additional stereo speakers. The arrangement allows you to enjoy 5.1-channel

surround in the Main Room and 2-channel stereo in the Sub Room at the same time.

RF/IR illuminated multi-brand remote control for operation from anywhere in your home

The remote control sends out not only IR (infrared) but also RF (radio frequency) signals as coded commands to control the receiver. With the remote in hand, you can operate the RX-1028VBK and other JVC audio/video equipment even when you're not in the same room.



RF/IR Illuminated Multi-Brand Remote Control Unit and RF Receptor (included)

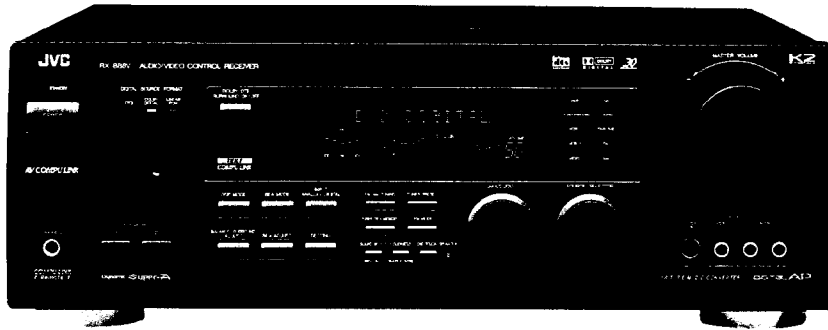
RX-880VBK

Audio/Video Control Receiver



AV COMPU LINK

TEXT
COMPU LINK



- ◆ **Stereo:** 120 watts per channel, 8 ohms, 20Hz to 20kHz, with 0.02% THD; 120 watts per channel, 4 ohms, 20Hz to 20kHz, with 0.08% THD; **Surround: (Front)** 100 watts per channel, 8 ohms, 1kHz, 0.8% THD; **(Center)** 100 watts, 8 ohms, 1kHz, 0.8% THD; **(Rear)** 100 watts per channel, 8 ohms, 1kHz, 0.8% THD
- ◆ Dolby Digital/DTS decoders built-in
- ◆ Compatible with Multichannel audio (5.1-channel analog input and 5 separate amps)
- ◆ Dynamic Super-A
- ◆ Banana-plug speaker terminals (all channels)
- ◆ High-rigidity Z-Chassis
- ◆ Optimized signal path and minimal contacts
- ◆ K2 Interface for all 6 channels
- ◆ 1-bit P.E.M. D.D. Converter for all 6 channels
- ◆ 3D-PHONIC
- ◆ Digital Acoustics Processor (DAP), with 4 preset sound fields
- ◆ Multi-Color On-Screen Display
- ◆ Multi-brand AV-CATV-DBS remote control with TEXT DISPLAY key
- ◆ One Touch Operation
- ◆ Subwoofer output
- ◆ Center Tone control
- ◆ 3-band electronic S.E.A. equalization with 5 presets and 1 manual setting for each source
- ◆ 5 video inputs: DBS*, VCR 1, VCR 2, DVD, VIDEO
- ◆ 4 audio inputs: PHONO, CD, TAPE/MD, TV SOUND*
- ◆ 1 coaxial and 2 optical digital inputs with assignable function (DBS, CD, MD, DVD)
- ◆ S-video inputs (4)/outputs (2)
- ◆ Loudness on/off
- ◆ VIDEO terminals on front (gold-plated)
- ◆ TEXT COMPU LINK
- ◆ AV COMPU LINK
- ◆ 15 AM and 30 FM station memory with character input for each station
- ◆ Enhanced COMPU LINK Control System

*DBS and TV SOUND sources cannot be connected at the same time.

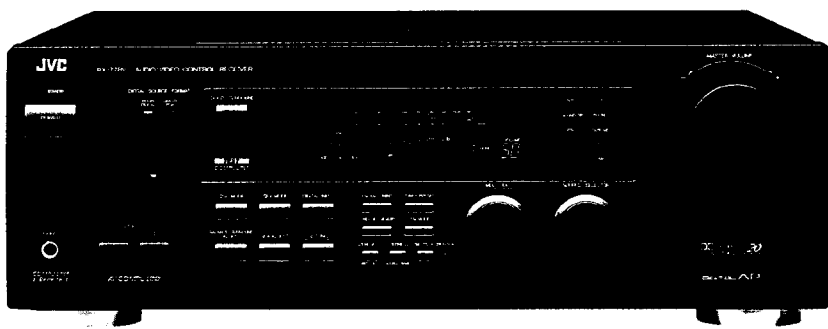
RX-770VBK

Audio/Video Control Receiver



AV COMPU LINK

TEXT
COMPU LINK

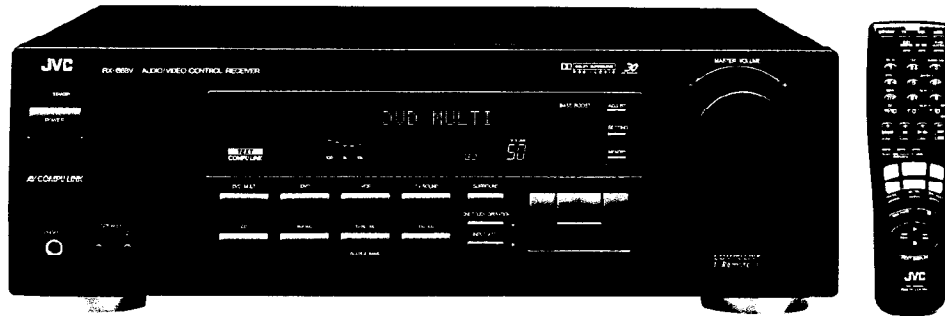


- ◆ **Stereo:** 110 watts per channel, 8 ohms, 20Hz to 20kHz, with 0.06% THD; **Surround: (Front)** 100 watts per channel, 8 ohms, 1kHz, 0.8% THD; **(Center)** 100 watts, 8 ohms, 1kHz, 0.8% THD; **(Rear)** 100 watts per channel, 8 ohms, 1kHz, 0.8% THD
- ◆ Dolby Digital decoder built-in
- ◆ Banana-plug speaker terminals (front left/right [1/2])
- ◆ High-rigidity Z-Chassis
- ◆ 3D-PHONIC
- ◆ Digital Acoustics Processor (DAP), with 4 preset sound fields
- ◆ Multi-Color On-Screen Display
- ◆ Multi-brand AV-CATV-DBS remote control with TEXT DISPLAY key
- ◆ One Touch Operation
- ◆ Subwoofer output
- ◆ 3-band electronic S.E.A. equalization with 5 presets and 1 manual setting for each source
- ◆ 3 video inputs: VCR, DVD, DBS*
- ◆ 4 audio inputs: PHONO, CD, TAPE/MD, TV SOUND*
- ◆ 2 optical digital inputs with assignable function (DBS, CD, MD, DVD)
- ◆ S-video input/output
- ◆ Loudness on/off
- ◆ TEXT COMPU LINK
- ◆ AV COMPU LINK
- ◆ 15 AM and 30 FM station memory with character input for each station
- ◆ Enhanced COMPU LINK Control System

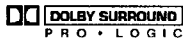
*DBS and TV SOUND sources cannot be connected at the same time.

RX-663VBK

Audio/Video Control Receiver



Dolby Digital Ready



AV COMPU LINK

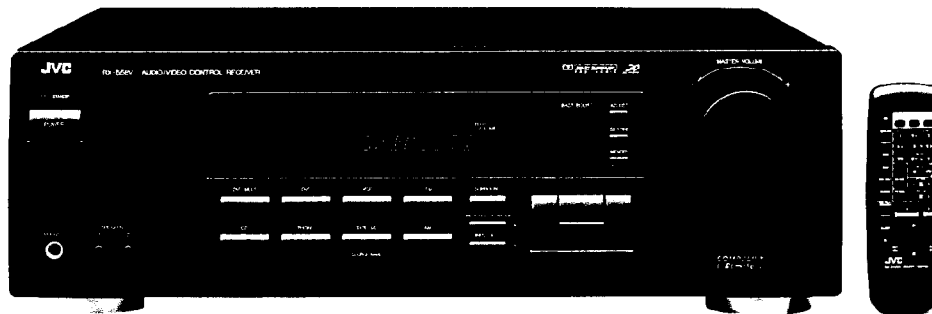
TEXT
COMPU LINK



- ◆ **Stereo:** 100 watts per channel, 8 ohms, 40Hz to 20kHz, with 0.0% THD;
- ◆ **Surround: (Front)** 100 watts per channel, 8 ohms, 1kHz, 0.8% THD; **(Center)** 100 watts, 8 ohms, 1kHz, 0.8% THD; **(Rear)** 100 watts per channel, 8 ohms, 1kHz, 0.8% THD
- ◆ Dolby Digital ready: 5.1-channel analog input and 5 separate amps
- ◆ Dolby Pro Logic in full digital processing (discrete amplifiers)
- ◆ 3D-PHONIC
- ◆ Digital Acoustics Processor (DAP), with 4 preset sound fields
- ◆ Multi-Color On-Screen Display
- ◆ One Touch Operation
- ◆ Subwoofer output
- ◆ Bass and treble tone controls
- ◆ Bass boost
- ◆ Multi brand AV CATV DBS remote control with TEXT DISPLAY key
- ◆ 2 video inputs: VCR, DVD
- ◆ 4 audio inputs: PHONO, TV SOUND, CD, TAPE/MD
- ◆ S-video input/output
- ◆ TEXT COMPU LINK
- ◆ AV COMPU LINK
- ◆ 15 AM and 30 FM station memory
- ◆ Enhanced COMPU LINK Control System

RX-553VBK

Audio/Video Control Receiver



Dolby Digital Ready



- ◆ **Stereo:** 100 watts per channel, 8 ohms, 40Hz to 20kHz, with 0.8% THD;
- ◆ **Surround: (Front)** 100 watts per channel, 8 ohms, 1kHz, 0.8% THD; **(Center)** 100 watts, 8 ohms, 1kHz, 0.8% THD; **(Rear)** 50 watts per channel, 8 ohms, 1kHz, 0.8% THD
- ◆ Dolby Digital ready: 5.1-channel analog input and 5 separate amps
- ◆ Dolby Pro Logic in full digital processing (discrete amplifiers)
- ◆ 3D-PHONIC
- ◆ Digital Acoustics Processor (DAP), with 4 preset sound fields
- ◆ One Touch Operation
- ◆ Subwoofer output
- ◆ Bass and treble tone controls
- ◆ Bass boost
- ◆ AV remote control
- ◆ 2 video inputs: VCR, DVD
- ◆ 3 audio inputs: PHONO, CD, TAPE/MD
- ◆ 15 AM and 30 FM station memory
- ◆ Enhanced COMPU LINK Control System

SPECIFICATIONS

	RX-1028VBK	RX-888VBK	RX-778VBK	RX-668VBK	RX-558VBK
AMPLIFIER SECTION					
Output Power: Stereo	130 watts per channel, min. RMS, driven into 8 ohms from 20Hz to 20kHz, with no more than 0.02% total harmonic distortion 130 watts per channel, min. RMS, driven into 4 ohms from 20Hz to 20kHz, with no more than 0.08% total harmonic distortion	120 watts per channel, min. RMS, driven into 8 ohms from 20Hz to 20kHz, with no more than 0.02% total harmonic distortion 120 watts per channel, min. RMS, driven into 4 ohms from 20Hz to 20kHz, with no more than 0.08% total harmonic distortion	110 watts per channel, min. RMS, driven into 8 ohms from 20Hz to 20kHz, with no more than 0.06% total harmonic distortion	100 watts per channel, min. RMS, driven into 8 ohms from 40Hz to 20kHz, with no more than 0.8% total harmonic distortion	100 watts per channel, min. RMS, driven into 8 ohms from 40Hz to 20kHz, with no more than 0.8% total harmonic distortion
Surround					
Front Channels	100 watts per channel, min. RMS, driven into 8 ohms at 1kHz, with no more than 0.8% total harmonic distortion	100 watts per channel, min. RMS, driven into 8 ohms at 1kHz, with no more than 0.8% total harmonic distortion	100 watts per channel, min. RMS, driven into 8 ohms at 1kHz, with no more than 0.8% total harmonic distortion	100 watts per channel, min. RMS, driven into 8 ohms at 1kHz, with no more than 0.8% total harmonic distortion	100 watts per channel, min. RMS, driven into 8 ohms at 1kHz, with no more than 0.8% total harmonic distortion
Center Channel	100 watts, min. RMS, driven into 8 ohms at 1kHz, with no more than 0.8% total harmonic distortion	100 watts, min. RMS, driven into 8 ohms at 1kHz, with no more than 0.8% total harmonic distortion	100 watts, min. RMS, driven into 8 ohms at 1kHz, with no more than 0.8% total harmonic distortion	100 watts, min. RMS, driven into 8 ohms at 1kHz, with no more than 0.8% total harmonic distortion	100 watts, min. RMS, driven into 8 ohms at 1kHz, with no more than 0.8% total harmonic distortion
Rear Channels	100 watts per channel, min. RMS, driven into 8 ohms at 1kHz, with no more than 0.8% total harmonic distortion	100 watts per channel, min. RMS, driven into 8 ohms at 1kHz, with no more than 0.8% total harmonic distortion	100 watts per channel, min. RMS, driven into 8 ohms at 1kHz, with no more than 0.8% total harmonic distortion	100 watts per channel, min. RMS, driven into 8 ohms at 1kHz, with no more than 0.8% total harmonic distortion	50 watts per channel, min. RMS, driven into 8 ohms at 1kHz, with no more than 0.8% total harmonic distortion
Input Sensitivity/Impedance					
PHONO	2.5mV/47k ohms	2.5mV/47k ohms	2.5mV/47k ohms	2.7mV/47k ohms	2.7mV/47k ohms
OTHER INPUTS	200mV/47k ohms	200mV/47k ohms	200mV/47k ohms	220mV/47k ohms	220mV/47k ohms
Signal-to-Noise Ratio (66 IHF/78 IHF)					
PHONO	70dB/78dB (REC OUT)	70dB/78dB (REC OUT)	70dB/78dB (REC OUT)	70dB/77dB (REC OUT)	70dB/77dB (REC OUT)
OTHER INPUTS	87dB/80dB	87dB/80dB	87dB/80dB	87dB/80dB	87dB/80dB
Frequency Response					
PHONO	20Hz — 20kHz (±1dB)	20Hz — 20kHz (±1dB)	20Hz — 20kHz (±1dB)	20Hz — 20kHz (±1dB)	20Hz — 20kHz (±1dB)
OTHER INPUTS	20Hz — 20kHz (±1dB)	20Hz — 20kHz (±1dB)	20Hz — 20kHz (±1dB)	20Hz — 20kHz (±1dB)	20Hz — 20kHz (±1dB)
RIAA Phono Equalization	±1dB (20Hz — 20kHz)	±1dB (20Hz — 20kHz)	±1dB (20Hz — 20kHz)	±1dB (20Hz — 20kHz)	±1dB (20Hz — 20kHz)
FM TUNER SECTION (II F)					
Usable Sensitivity	17dBf (1.9µV/75 ohms)	17dBf (1.9µV/75 ohms)	17dBf (1.9µV/75 ohms)	17dBf (1.9µV/75 ohms)	17dBf (1.9µV/75 ohms)
Quieting Sensitivity: MONO	21.3dBf (3.2µV/75 ohms)	21.3dBf (3.2µV/75 ohms)	21.3dBf (3.2µV/75 ohms)	21.3dBf (3.2µV/75 ohms)	21.3dBf (3.2µV/75 ohms)
STEREO	41.3dBf (31.5µV/75 ohms)	41.3dBf (31.5µV/75 ohms)	41.3dBf (31.5µV/75 ohms)	41.3dBf (31.5µV/75 ohms)	41.3dBf (31.5µV/75 ohms)
Stereo Separation at REC OUT (1kHz)	35dB	35dB	35dB	35dB	35dB
Distortion (1kHz) MONO/STEREO	0.4%/0.6%	0.4%/0.6%	0.4%/0.6%	0.4%/0.6%	0.4%/0.6%
Signal-to-Noise Ratio (IHF-A weighted)					
MONO/STEREO (at 85dBf)	78dB/73dB	78dB/73dB	78dB/73dB	78dB/73dB	78dB/73dB
Selectivity (±400kHz)	48dB	48dB	48dB	48dB	48dB
Capture Ratio (at 85dBf)	2dB	2dB	2dB	2dB	2dB
IF Response Ratio (98MHz)	85dB	85dB	85dB	85dB	85dB
Frequency Response	30Hz — 15kHz (+0.5, -3dB)	30Hz — 15kHz (+0.5, -3dB)	30Hz — 15kHz (+0.5, -3dB)	30Hz — 15kHz (+0.5, -3dB)	30Hz — 15kHz (+0.5, -3dB)
AM TUNER SECTION					
Usable Sensitivity	400µV/m (Loop antenna)	400µV/m (Loop antenna)	400µV/m (Loop antenna)	400µV/m (Loop antenna)	400µV/m (Loop antenna)
Signal-to-Noise Ratio (100mV/m)	50dB	50dB	50dB	50dB	50dB
Selectivity (±10kHz)	23dB	23dB	23dB	23dB	23dB
VIDEO INPUTS/OUTPUTS					
Output Signal Level: S-Video -Y	1Vp-p (at 1Vp-p input)	1Vp-p (at 1Vp-p input)	1Vp-p (at 1Vp-p input)	—	—
S-Video -C	0.286Vp-p (at 0.286Vp-p input)	0.286Vp-p (at 0.286Vp-p input)	0.286Vp-p (at 0.286Vp-p input)	—	—
Composite	1Vp-p (at 1Vp-p input)	1Vp-p (at 1Vp-p input)	1Vp-p (at 1Vp-p input)	1Vp-p (at 1Vp-p input)	1Vp-p (at 1Vp-p input)
Impedance	75 ohms unbalanced	75 ohms unbalanced	75 ohms unbalanced	75 ohms unbalanced	75 ohms unbalanced
Synchronization	Negative	Negative	Negative	Negative	Negative
Signal-to-Noise Ratio	45dB	45dB	45dB	45dB	45dB
Crosstalk	45dB (3.58MHz)	45dB (3.58MHz)	45dB (3.58MHz)	45dB (3.58MHz)	45dB (3.58MHz)
Dimensions (W x H x D)	17 ³ / ₁₆ x 7 ⁷ / ₁₆ x 16 ¹ / ₄ inches 435 x 157 x 412.5mm	17 ³ / ₁₆ x 6 ⁷ / ₁₆ x 16 ¹ / ₄ inches 435 x 157 x 412.5mm	17 ³ / ₁₆ x 6 ⁷ / ₁₆ x 16 ¹ / ₄ inches 435 x 157 x 412.5mm	17 ³ / ₁₆ x 5 ³ / ₁₆ x 15 ¹³ / ₁₆ inches 435 x 146 x 403.5mm	17 ³ / ₁₆ x 5 ³ / ₁₆ x 15 ¹³ / ₁₆ inches 435 x 146 x 403.5mm
Weight	26.3 lbs. (11.9kg)	26.3 lbs. (11.9kg)	25.0 lbs. (11.3kg)	22.6 lbs. (10.2kg)	22.6 lbs. (10.2kg)

	XL-MC334BK	XL-MC222BK	XL-FZ258BK	XL-FZ158BK	XL-Z232BK
Total Harmonic Distortion (1kHz)	0.004%	0.006%	0.0022%	0.0022%	0.0025%
Dynamic Range (1kHz)	96dB	95dB	98dB	98dB	98dB
Signal-to-Noise Ratio	105dB	100dB	107dB	107dB	106dB
Frequency Response	4Hz — 20kHz	4Hz — 20kHz	2Hz — 20kHz	2Hz — 20kHz	2Hz — 20kHz
Wow and Flutter	Unmeasurable	Unmeasurable	Unmeasurable	Unmeasurable	Unmeasurable
Channel Separation (1kHz)			94dB	94dB	94dB
Output Level (LINE)	2.0V RMS	2.0V RMS	2.0V RMS	2.0V RMS	2.0V RMS
Dimensions (W x H x D)	17 ³ / ₁₆ x 7 ⁷ / ₁₆ x 19 inches 435 x 199.5 x 482.5mm	17 ³ / ₁₆ x 7 ⁷ / ₁₆ x 19 inches 435 x 199.5 x 482.5mm	17 ³ / ₁₆ x 5 ¹ / ₁₆ x 15 ³ / ₁₆ inches 435 x 128 x 398mm	17 ³ / ₁₆ x 5 ¹ / ₁₆ x 15 ³ / ₁₆ inches 435 x 128 x 398mm	17 ³ / ₁₆ x 4 x 11 ³ / ₁₆ inches 435 x 101 x 281mm
Weight	17.2 lbs. (7.8kg)	17.2 lbs. (7.8kg)	11.3 lbs. (5.1kg)	11.3 lbs. (5.1kg)	7.3 lbs. (3.3kg)

Feature Comparison Charts

Receivers	RX-1028VBK	RX-888VBK	RX-778VBK	RX-668VBK	RX-558VBK
Remote Control					
RFIR Illuminated Multi-Brand AV-CATV-DBS Remote Control	•				
Multi-Brand AV-CATV-DBS Remote Control		•	•	•	
AV Remote Control					•

Circuit	RX-1028VBK	RX-888VBK	RX-778VBK	RX-668VBK	RX-558VBK
Surround Sound					
Dolby Digital Decoder Built-in	•	•	•		
DTS Decoder Built-in	•	•			
DVD Multichannel Audio Compatible (5.1-channel input & 5 separate amps)	•	•		•	•
Dolby Pro Logic in Full Digital Processing	•	•	•	•	•
3D-PHONIC					
Dolby Digital (Digital)	•	•	•		•
Dolby Pro Logic (Analog)	•	•	•	•	•
DAP (Hall/Live Club/Pavilion/Dance Club)	•	•	•	•	•
K2 Interface (all channels)	•	•			
1-bit P.E.M. D.D. Converter (all channels)	•	•			
Advanced Super-A	•				
Dynamic Super-A		•			
Low Impedance (4 ohms) Driving Capability	•	•			
Discrete Amplifiers	•	•	•	•	•

Input/Output	Audio		Video		Audio		Video		Audio		Video		Audio		Video		Audio		Video		
	Analog	Digital	C	S	Analog	Digital	C	S	Analog	Digital	C	S	Analog	Digital	C	S	Analog	Digital	C	S	
• Gold-Plated Terminal																					
• Assignable		Opt.	Coax			Opt.	Coax			Opt.	Coax			Opt.	Coax			Opt.	Coax		
PHONO IN	•				•					•								•			
TV SOUND(NRS) IN	•	+	+	•	•	+	+	•	•	•	+	•	•								
CD IN	•	+	+		•	+	+			•	+	+									
TAPE/MD IN/OUT	•/•	•/•	•/•		•/•	•/•	•/•			•/•	•/•	•/•						•/•			
VCR (1) IN/OUT	•/•			•/•	•/•	•/•	•/•			•/•	•/•	•/•						•/•			•/•
VCR 2 IN/OUT	•/•			•/•	•/•	•/•	•/•			•/•	•/•	•/•						•/•			•/•
DVD IN	•	+	+	•	•	+	+	•	•	•	+	•	•	•	•	•	•	•	•	•	•
VIDEO (Front) IN	•	Multi		•	•	Multi		•	•	•	Multi		•	•	•	•	•	•	•	•	
MONITOR OUT				•	•			•	•			•	•				•	•			•
Total Number of Inputs	8	3	1	5	4	6	2	1	5	4	6	2		3	1	6		2	1	5	
Total Number of Outputs	4			3	2	3			3	2	2			2	1	2		2	1	2	
5-channel Pre-Out	•																				
Room B Pre-Out (L/R)	•																				
Speaker Terminals																					
Main L/R 1																					
Main L/R 2		•	(Main 2/Sub Room)																		
Center																					
Surround L/R																					
Subwoofer Output																					

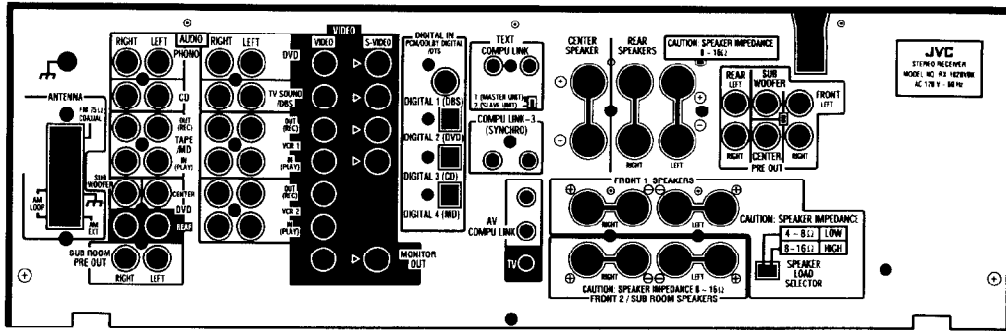
Functions	RX-1028VBK	RX-888VBK	RX-778VBK	RX-668VBK	RX-558VBK
Multi-Color On-Screen Display	•	•	•	•	•
Fluorescent Display	•	•	•	•	•
Dot-Matrix Display	•	•	•	•	•
Sound Pattern Display	•	•	•	•	•
Velocity-Sensitive Rotary Encoder Volume Control	•	•	•	•	•
One-Touch Operation	•	•	•	•	•
Multi-Room, Multi-Source	•	•	•	•	•
TV Auto Power On	•	•	•	•	•
S.E.A.					
Preset Memory	5	5	5		
Manual	• (for each source)	• (for each source)	• (for each source)		
Tone Control (Electronic Bass/Treble)				•	•
Center Tone Control	•	•			
Loudness	•	•	•		
Bass Boost				•	•
Balance	•	•	•	•	•

Tuner	RX-1028VBK	RX-888VBK	RX-778VBK	RX-668VBK	RX-558VBK
Band	FM/AM	FM/AM	FM/AM	FM/AM	FM/AM
Number of Presets	30 FM/15 AM	30 FM/15 AM	30 FM/15 AM	30 FM/15 AM	30 FM/15 AM
Station Name Memory (4 letters of all stations)	•	•	•		

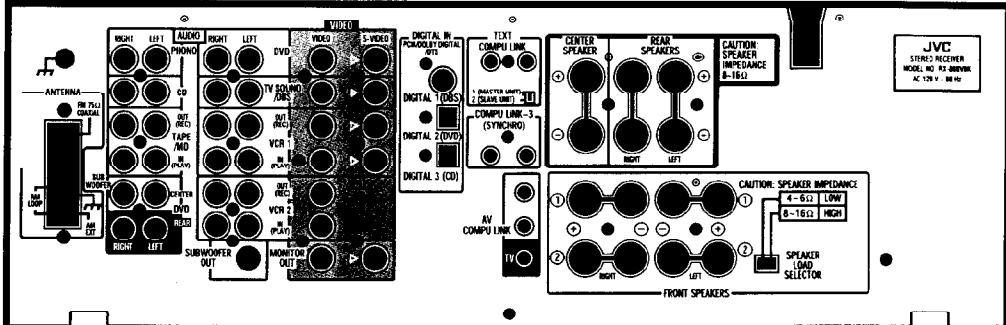
Others	RX-1028VBK	RX-888VBK	RX-778VBK	RX-668VBK	RX-558VBK
High-Rigidity Z-Chassis	•	•	•		
TEXT COMPU LINK	•	•	•	•	
Enhanced COMPU LINK Control System	•	•	•	•	•
AV COMPU LINK	•	•	•	•	

Receivers' Rear Panels

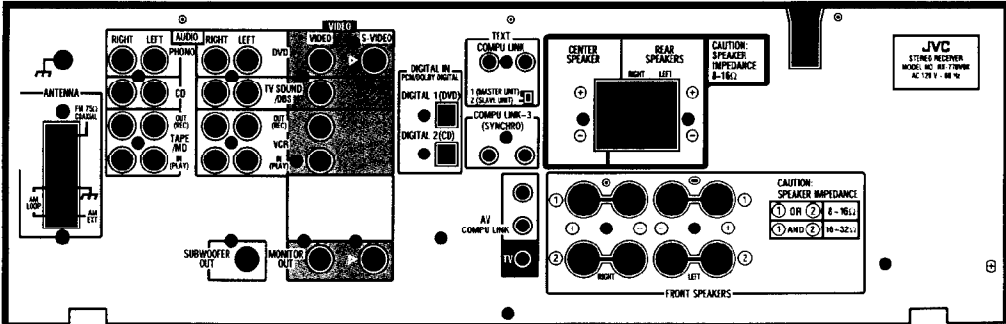
RX-1028VBK



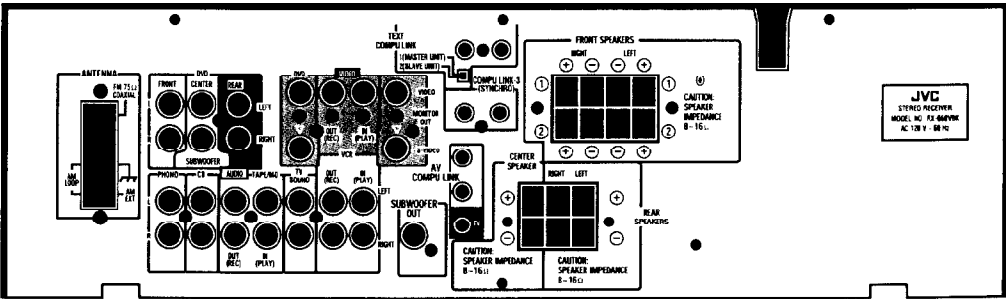
RX-888VBK



RX-778VBK



RX-668VBK



RX-558VBK

