

JVC[®]

The Perfect Experience / —

MICRO COMPONENT SYSTEMS 2004



WE Bring the Music to You

John Patitucci at the 2003 JVC International Jazz Festival



A Musical Instrument Called a "Speaker"

Natural acoustics from a speaker cone made by Mother Nature. The superb sound of JVC's new Audio system is enabled by elements not found in conventional speakers.



WOOD CONE

The World's First Wood Cone Speaker — Raising the Speaker to the Level of a Musical Instrument

A popular material for violins, pianos, and many other musical instruments, wood is blessed with superior acoustic characteristics not seen in other materials. This is why many speaker enclosures are made of wood. Then, why not a speaker diaphragm? It was 20 years ago that JVC engineers came up with this idea in their eternal quest for reproducing original sounds as envisioned by studio engineers, and it was at that time that the first step toward developing a wood speaker diaphragm was taken.

Natural Sound

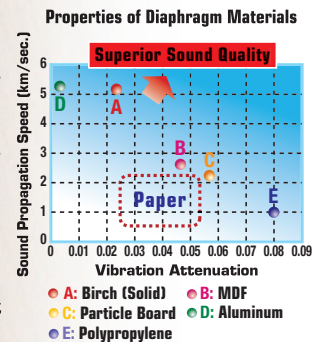
Underlying the wood's superiority as a material for musical instruments — and speaker diaphragms — are the following acoustic characteristics:

1) Sound Propagation Speed and Vibration Attenuation

High sound propagation speed ensures high sound definition, while sufficient internal loss (vibration attenuation) is essential for crispness and clarity. Solid wood is superior in both of these factors — impossible with conventional materials. And especially the birch wood, featuring firm fiber and a beautiful grain, ensures high durability and optimum acoustic characteristics.

2) Uneven Sound Propagation Speed

With conventional diaphragms, sound propagates at the same speed in all directions, causing standing waves, resonant points, and poor sound pressure frequency response, all of which degrade sound quality. Wood diaphragms are free of such drawbacks, because the sound propagates at diverse speeds — much faster along the grain than across the grain.

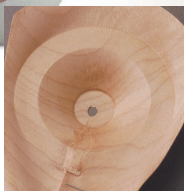
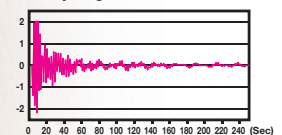


Challenges in Development — and a Surprising Solution

When it came to making a diaphragm out of wood, however, there was a significant barrier — wood sheets can crack, split, or break when stamped. JVC engineers tried various techniques, such as boiling sheets and soaking them in water, but each method attempted proved ineffective for changing the physical characteristics.

After years of trial and error, JVC finally found the solution in a surprising material — *sake*, or Japanese rice wine. When soaked in *sake*, a wood sheet becomes soft and pliable enough not to break or crack even when stamped.

Wood Diaphragm's Vibration Attenuation



2nd Stamping Process



3rd Stamping Process

JVC has combined the "sake" careful, elaborate stamping processes using resin and special agents to make the wood pliable enough to retain natural sound over years — so took JVC engineers several years to come up with. In a 10-year process of research and discovery resulted in the development of a wood cone speaker.

Final Sound Tuning with JVC's Studio Engineers

In its quest to reproduce original sound — sound that comes extremely close to what studio engineers intended — and to get the optimum out of the wood cone speaker, JVC looked to studio engineers from the Tokyo Aoyama Recording Studio, a JVC affiliate, to collaborate in the final sound-tuning stage of EX-A1 development. Advice and opinions from the sound-creating experts are also reflected in the selection and layout of parts and devices for the center unit (see the next page for details).

World's First Wood Cone Speaker

The sound from the EX-A1's wood cone speaker is astonishingly clear and natural, just like sound emitted from a musical instrument, with dynamic bass that is usually impossible without a separate subwoofer. This is because the superior, exclusive acoustic characteristics of wood are working in synergy with the following high-grade parts and devices, which JVC carefully chose for completing the speaker unit:

The **solid cherrywood enclosure** not only features the same acoustic characteristics as the diaphragm — high sound propagation speed, natural vibration attenuation, reduced standing waves and resonant points, and better sound pressure frequency response — but also gives an elegant, classy appearance to the speaker unit.



Heavy diecast aluminum frame, which JVC chose for the wood cone speaker, helps to provide a dynamic, high-quality bass sound.

The **neodymium magnet** generates an extremely high magnetic flux density — equal to that from a much larger-sized ferrite magnet —, which translates into the compact speaker's astounding power. Moreover, use of a **copper cap** for the magnet helps reduce sound distortion.

The **butyl rubber edge** features physical characteristics that improves the linearity of low frequency signals and prevents the distortion of bass.



Diecast Aluminum Frame



Butyl Rubber Edge

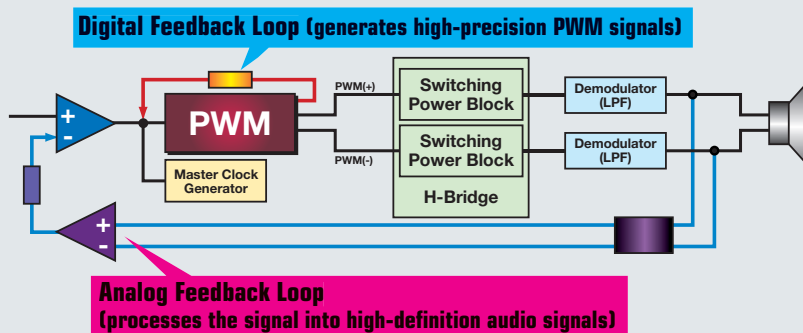
The **edgewise-wound 4-layer voice coil** features the wires pressed flat and packed closer than round ones. The results are higher efficiency, better heat radiation, and lower distortion.

Hybrid Feedback Digital Amplifiers

To fully exploit the benefits of the wood cone speaker, JVC has applied its expertise to the EX-A1's center unit. One of the most remarkable features is the JVC-original **Hybrid Feedback Digital Amplifier**.

Usually, a digital amplifier is compact

Hybrid Feedback Digital Amp Configuration



and lightweight: because the process of digital amplification combines high efficiency and reduced power dissipation through heat loss, it operates on a smaller transformer and power supply than analog amplifiers. But analog-digital conversion of signals generates digital noise, and fluctuations in the power-supply voltages and power-supply noise can also cause analog noise.

The Hybrid Feedback Digital Amplifier eliminates these noises by using two feedback systems: a digital feedback system to significantly improve the precision with which the PWM (Pulse Width Modulation) signals are generated, and an analog feedback system that further "brushes up" the signals to ensure the waveform of the analog signal at output is identical to that at input.

Combined, the two feedbacks are extremely efficient, which results in higher sound quality.

All in all, the JVC Hybrid Feedback Digital Amp features not only the compact size, but also high power and low distortion — 1/10th that of conventional designs.

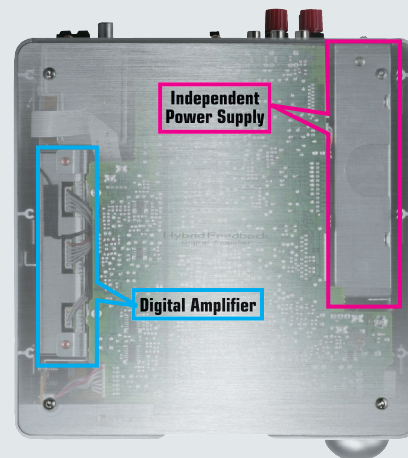
Digital Direct Progressive Scan

The EX-A1 delivers high-resolution progressive pictures to compatible TVs and monitors. With this advanced technology, odd and even scan lines are not displayed alternately like interlaced pictures, but all at once. The result: solid, remarkably clear pictures with smooth lines/curves and no interline blur, even on large-screen displays.

Aluminum "Twin Arc Panel" Construction

The amplifier's excellence in noise reduction is further enhanced by the internal construction of the EX-A1's center unit. The Aluminum "Twin Arc Panel" Construction features aluminum cabinets that individually house the digital amplifier and switching power supply module, physically separating the two units from the audio circuit. This effectively avoids signal interference and noise.

Selection of High-Quality Parts



with JVC's Studio Engineers

Advice and opinions from the sound-creating experts are reflected in the carefully chosen, high-grade parts including **SILMIC electrolytic capacitor** with silk fiber used for the main electrolytic paper material, and the bass circuit's **polypropylene film capacitor**, which features high reliability and performance, superior frequency response, and stable temperature characteristics.



DVD Audio Playback

The EX-A1's outstanding audio features are completed by its playability of DVD Audio, which results in the master-tape-quality sound intended by JVC. This latest format features a dynamic range of 144dB using a high 192kHz sampling frequency and a high 24-bit rate — about seven times more information than that contained in an ordinary CD. What the wood diaphragm will bring to your ears — and mind — is not a sound, but real music played on a musical instrument called a speaker.

"Dolby," the double-D symbol and "Dolby Digital" are trademarks of Dolby Laboratories Licensing Corporation. "DTS" is a trademark of Digital Theater Systems, Inc.



EX-A1

DVD Compact Component System with Wood Cone Speakers

Power Output: 30 watts per channel
 Sources: DVD-Audio/Video, DVD-RW,
 DVD-R, CD, SVCD/VCD, CD-R/RW,
 MP3/JPEG (CD-R/RW), Tuner
 World's First Wood Cone Speaker
 (Birch Wood Diaphragm)
 Real Cherrywood Speaker Enclosure
 JVC-Exclusive Hybrid Feedback Digital
 Amplifier

Aluminum "Twin Arc Panel"
 Construction
 Dolby Digital/DTS Decoder (2ch)
 192kHz/24-bit Audio D/A Converter
 10-bit/54MHz Video D/A Converter
 Digital Direct Progressive Scan Output
 Express Play Start
 Screw-type Speaker Terminals
 Virtual Surround



Remote Control with Slide
 Open Lid





Unwind with Quality Sound — and Pictures.

JVC offers quality time with crystal clear sound and high-resolution pictures. Add visual elements to your special moments.

DVD Audio/Video Compatibility (FS-S77)

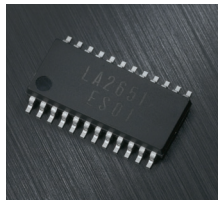
The JVC micro component systems boast compact dimensions but offer compatibility with virtually all disc formats. Playability of DVD-Video, DVD-RW, and DVD-R means you can enjoy movies and other video content with high-quality pictures.

The FS-S77 is also compatible with DVD Audio — one of the latest and most advanced formats that far exceeds CDs in total sound quality. The high specs of DVD Audio let you enjoy the highest-quality stereo sound.



RHYTHMAX
RHYTHMAX intensifies your listening

experience even at low sound levels. This JVC-exclusive technology accurately detects areas of sound, which constitute “beats”, or rhythm of the song, and amplifies them for an even punchier sound. RHYTHMAX provides upgraded acoustic



experience even when the song has no articulate “beats”, such as classical music, because the “Loudness

RHYTHMAX Off



Signals are amplified for more punchy bass.

RHYTHMAX On



Function” automatically amplifies bass sound recorded at low levels, which becomes inaudible when the sound level is low.

5-Disc Changer (FS-S77/FS-S57)

The compact bodies of JVC micro component systems incorporate a 5-disc tray-type disc changer mechanism, which lets you jump around an expanded number of movies (FS-S77), albums, and tracks without being bothered by frequent disc changes. Discs not in play can be removed even while playback is underway.





FS-S77

DVD Micro Component System

Power Output: Woofer: 25 watts per channel;
Tweeter: 25 watts per channel Sources:
DVD-Audio/Video, DVD-RW, DVD-R, CD, SVCD/
VCD, CD-R/RW, MP3/JPEG/WMA (CD-R/RW),
Tuner 5-Disc Changer DVD-Video: Slow/
Zoom/Angle/Chapter Search/Time Search/Still/
Resume Functions Dolby Digital/DTS Decoder
(2ch) Digital Direct Progressive Scan Output
192kHz/24-bit Audio D/A Converter 10-bit/
54MHz Video D/A Converter Express Play Start

Bi-Amp Operation RHYTHMAX 3D PHONIC
Surround Play 2-Way Bass-Reflex: 3¹⁵/₁₆"
(10cm) Cone Woofer, 1⁵/₈" (4cm) Cone Tweeter



FS-S57

Micro Component System

Power Output: 74 watts per channel 5-
Disc Changer Fluorescent Display on Clear
Background with Backlit LED Sources: CD,
CD-R/RW, MP3 (CD-R/RW), Tuner Active
Hyper-Bass PRO (2-Step) CD Program
(32 Tracks)/Random/Repeat Play Rotary
Encoder Volume Control Electronic Bass/

Treble Tone Controls Clock/Timer (Daily/Rec/
Sleep) Wakeup Volume 2-Way Bass-Reflex:
4³/₄" (12cm) Cone Woofer and 1⁵/₈" (4cm) Cone
Tweeter



DAILY 1

DAILY 2

DAILY 3

3-Preset Timer (FS-S77/FS-H300/FS-H100)

The user-friendly timer allows you to preset up to three different times and switch them whenever you want with ease. This function is particularly convenient when you need to wake up at different times during the week, because you do not have to reset the timer, but just choose from preset times.



FS-H300

Micro Component System

Power Output: 20 watts per channel Sources:
 CD, CD-R/RW, MP3 (CD-R/RW), Tuner, Cassette
 S.E.A. (4 Modes): POP/ROCK/CLASSIC/JAZZ
 Electronic Bass Control Clock/3-Preset Timer
 Front AUX Input 1-bit D/A Converter

Program (40 Tracks)/Random/Repeat Play
 Full-Logic Cassette Control



FS-H100

Micro Component System

Power Output: 12.5 watts per channel
 Sources: CD, CD-R/RW, MP3 (CD-R/RW),
 Tuner, Cassette S.E.A. (4 Modes): POP/ROCK/
 CLASSIC/JAZZ Electronic Bass/Treble Tone
 Controls Clock/3-Preset Timer

Front AUX Input 1-bit D/A Converter
 Program (32 Tracks)/Random/Repeat Play



Front AUX Input (FS-H300/FS-H100)

An auxiliary input is conveniently located on the front panel, so you can easily enjoy sound from external sources, such as digital audio players.



FS-X3

Executive Desktop Stereo

Power Output: 30 watts per channel Sources: CD, CD-R/RW, Tuner JVC-Exclusive Hybrid Feedback Digital Amplifier Motor-Driven CD Door Active Hyper-Bass PRO (1-Step) Audio Output: Optical x 1, Analog x 1 and Subwoofer x 1 Solid Aluminum Volume Control Clock/Timer (Daily/Sleep) Electronic Bass/Treble Tone Controls

2-Way Bass-Reflex: 3¹⁵/₁₆" (10cm) Aramid Hyper Neo Olefin Cone Woofer with 2-Layer Edgewise-Wound Voice Coil, and 1³/₁₆" (2cm) Soft Dome Tweeter

AHB PRO



Hybrid Feedback Digital Amplifier



FS-X1

Executive Desktop Stereo

Power Output: 30 watts per channel Sources: CD, CD-R/RW, Tuner JVC-Exclusive Hybrid Feedback Digital Amplifier Motor-Driven CD Door Active Hyper-Bass PRO (1-Step) Audio Output: Optical x 1, Analog x 1 and Subwoofer x 1 Oblique Cone Speaker Solid Aluminum Volume

Control Clock/Timer (Daily/Sleep) 3³/₁₆" (8cm) Full-Range Aramid Hyper Neo Olefin Cone Speaker with 4-Layer Edgewise-Wound Voice Coil

AHB PRO



Hybrid Feedback Digital Amplifier

Notice: It should be noted that it may be unlawful to re-record pre-recorded tapes, records, or discs without the consent of the owner of copyright in the sound or video recording, broadcast or cable program and in any literary, dramatic, musical, or artistic work embodied therein.

Specifications & Features

EX Series

SPECIFICATIONS			EX-A1
CENTER UNIT			
Output Power (FTC)			30 watts per channel, min. RMS, driven into 4 ohms, at 1kHz, with no more than 10% total harmonic distortion
Horizontal Resolution			500 Lines
Output Level	Component	Y	1.0Vp-p/75 ohms
		P _b /P _H	0.7Vp-p/75 ohms
	S-Video	Y	1.0Vp-p/75 ohms
		C	0.286Vp-p/75 ohms
	Composite		1.0Vp-p/75 ohms
Dynamic Range (1kHz)			88dB
Signal-to-Noise Ratio			95dB
Dimensions (W x H x D)	inches	9 ⁷ / ₁₆ x 3 ¹⁵ / ₁₆ x 10 ⁹ / ₁₆	
	mm	232 x 100 x 269	
Mass	lbs. (kg)	6.6 (3.0)	
SPEAKERS			
Speaker	Full Range	3 ⁹ / ₁₆ " (8cm), Wood Cone	
Dimensions (W x H x D)	inches	4 ³ / ₄ x 6 ⁷ / ₁₆ x 9 ⁷ / ₁₆	
	mm	120 x 161 x 239	
Mass	lbs. (kg)	3.5 (1.6)	
FEATURES			
GENERAL			
Fluorescent Display			•
Dimmer			•
Sleep Timer			•
AMPLIFIER/TUNER			
Hybrid Feedback Digital Amp			•
Electronic Bass/Treble Tone Controls			•
Preset Stations (15 AM, 30 FM)			•
DVD/CD PLAYER			
Playable Formats	DVD-Audio	•	
	DVD-Video	•	
	DVD-RW/DVD-R (VIDEO Format)	•	
	CD/CD-R/RW	•	
	SVCD/VCD	•	
	MP3 (CD-R/RW)	•	
	JPEG (CD-R/RW)	•	
DVD-Video: Slow/Zoom/Angle/Chapter Search/Time Search/Still/Resume Functions			•
Dolby Digital/DTS Decoder			• (2ch)
Digital Direct Progressive Scan Output			•
Express Play Start			•
Rolling Pickup			•
Virtual Surround			•
192kHz/24-bit Audio D/A Converter			•
10-bit/54MHz Video D/A Converter			•
Number of Programs			99
Program/Random/Repeat Play			•
Optical Digital Output (Dolby Digital/DTS Digital Out)			•
On-Screen Language			English/French/Spanish
TERMINALS			
Audio Out	Optical	•	
	Subwoofer	•	
Audio In	Analog	•	
Video Out	Component	•	
	S-Video	•	
	Composite	•	
Headphone Out			•
SPEAKERS			
Real Cherrywood Enclosure			•
Birch Wood Cone Diaphragm			•
Diecast Aluminum Frame			•
Neodymium Magnet			•
Detachable Grilles			•
Edgewise-Wound 4-Layer Voice Coil			•
Screw-Type Terminal			•
Magnetically Shielded			•
Type			Full-Range, Bass-Reflex

FS-X Series

SPECIFICATIONS			FS-X3	FS-X1
CENTER UNIT				
Output Power (FTC)			30 watts per channel, min. RMS, driven into 4 ohms, at 1kHz, with no more than 10% total harmonic distortion	30 watts per channel, min. RMS, driven into 4 ohms, at 1kHz, with no more than 10% total harmonic distortion
Dynamic Range (1kHz)			88dB	88dB
Signal-to-Noise Ratio			95dB	95dB
Dimensions (W x H x D)	inches	6 ⁹ / ₁₆ x 5 ¹ / ₈ x 9 ¹⁷ / ₃₂		6 ⁹ / ₁₆ x 5 ¹ / ₈ x 9 ¹⁷ / ₃₂
	mm	160 x 130 x 242		160 x 130 x 242
Mass	lbs. (kg)	5.1 (2.3)		5.1 (2.3)
SPEAKERS				
Speaker	Woofers	3 ¹⁵ / ₁₆ " (10cm), Cone		
	Tweeter	1 ³ / ₁₆ " (2cm), Dome		
	Full Range			3 ⁹ / ₁₆ " (8cm), Cone
Impedance			4 ohms	4 ohms
Dimensions (W x H x D)	inches	5 ¹⁹ / ₁₆ x 9 ¹¹ / ₁₆ x 8 ⁹ / ₁₆		4 ¹ / ₂ x 6 ¹⁵ / ₁₆ x 6 ⁷ / ₈
	mm	145 x 245 x 210		114 x 176 x 174
Mass	lbs. (kg)	5.3 (2.4)		2.9 (1.3)
FEATURES				
GENERAL				
Fluorescent Display			•	•
Dimmer			•	•
Motor-Driven CD Door			•	•
Blue CD Illumination			•	•
Aluminum Volume Knob			•	•
Clock/Timer (Daily/Sleep)			•	•
AMPLIFIER/TUNER				
Hybrid Feedback Digital Amp			•	•
Active Hyper-Bass PRO			•	•
Electronic Bass/Treble Tone Controls			•	•
Preset Stations (15 AM, 30 FM)			•	•
CD PLAYER				
CD-R/RW Playback			•	•
1-Bit D/A Converter			•	•
Number of Programs			32	32
Program/Random/Repeat Play			•	•
Optical Digital Output			•	•
TERMINALS				
Audio Out	Optical/Analog/Subwoofer	•/•/•		•/•/•
Audio In	Analog	•		•
Headphone Out			•	•
SPEAKERS				
Aramid Hyper Neo Olefin Cone			•	•
Detachable Grilles			•	•
Oblique Cone Speaker			•	•
Edgewise-Wound 4-Layer Voice Coil			•	•
Edgewise-Wound 2-Layer Voice Coil			•	
Magnetically Shielded			•	
Speaker Type			2-Way, Bass-Reflex	Full Range, Bass-Reflex

FS Series

SPECIFICATIONS			FS-S77	FS-S57	FS-H300	FS-H100
CENTER UNIT						
Output Power (FTC)	Woofers		25 watts per channel, min. RMS, driven into 4 ohms,	74 watts per channel, min. RMS, driven into 6 ohms, at 1kHz, with no more than	20 watts per channel, min. RMS, driven into 4 ohms, at 1kHz, with no more than 10% total harmonic distortion	12.5 watts per channel, min. RMS, driven into 6 ohms, at 1kHz, with no more than 10% total harmonic distortion
1kHz, with no more than 10% total harmonic distortion	Tweeter	10% total harmonic distortion	25 watts per channel, min. RMS, driven into 4 ohms, at 1kHz, with no more than 10% total harmonic distortion			
Horizontal Resolution			500 Lines			
Output Level	Component	Y	1.0Vp-p/75 ohms			
		Pa/Pb	0.7Vp-p/75 ohms			
	S-Video	Y	1.0Vp-p/75 ohms			
		C	0.286Vp-p/75 ohms			
	Composite		1.0Vp-p/75 ohms			
Dynamic Range (1kHz)			90dB	88dB	85dB	85dB
Signal-to-Noise Ratio			90dB	97dB	85dB	85dB
Dimensions (W x H x D)	inches		6 ¹⁵ / ₁₆ x 9 ³ / ₈ x 14 ¹³ / ₁₆	6 ¹⁵ / ₁₆ x 9 ¹ / ₂ x 14 ¹⁵ / ₁₆	6 x 9 ³ / ₁₆ x 11 ¹ / ₂	5 ¹¹ / ₁₆ x 10 ¹ / ₁₆ x 10 ¹⁵ / ₁₆
	mm		175 x 237 x 375.1	175 x 239.5 x 378	152 x 233 x 292	144 x 255 x 277
Mass	lbs. (kg)		16.6 (7.5)	16.6 (7.5)	8.6 (3.9)	6.4 (2.9)
SPEAKERS						
Speakers	Woofers		3 ¹⁵ / ₁₆ " (10cm), Cone	4 ¹ / ₄ " (12cm), Cone		
	Tweeter		1 ³ / ₈ " (4cm), Cone	1 ³ / ₈ " (4cm), Cone		
	Full-Range				3 ¹⁵ / ₁₆ " (10cm), Cone	3 ¹⁵ / ₁₆ " (10cm), Cone
Impedance			4 ohms	6 ohms	4 ohms	6 ohms
Dimensions (W x H x D)	inches		5 ³ / ₄ x 9 ³ / ₁₆ x 8 ¹ / ₈	5 ³ / ₄ x 9 ¹ / ₂ x 8	5 ¹³ / ₁₆ x 9 ³ / ₁₆ x 7 ¹ / ₂	5 ¹ / ₈ x 10 ¹ / ₈ x 6
	mm		145 x 236 x 205	145 x 239.5 x 202	147 x 233 x 189	130 x 257 x 151
Mass	lbs. (kg)		5.1 (2.3)	4.9 (2.2)	4.2 (1.9)	3.3 (1.5)
FEATURES						
GENERAL						
Rotary Encoder Volume Control			•	•	•	•
COMPU PLAY			•	•	•	• (Except for CASSETTE)
Display	Fluorescent Display			• (Clear Background)		
	LCD Display		• (Blue)		• (Blue)	• (Amber)
	Dimmer		• (1, 2, Auto)	•		
Clock/3-Preset Timer			•	Clock/Daily Timer	•	•
Rec Timer			•		•	
Sleep Timer			•		•	
Wakeup Volume			•		•	•
AMPLIFIER/TUNER						
Bi-Amp Operation			•			
Active Hyper-Bass PRO				• (2-Step)		
Electronic Bass/Treble Tone Controls			•	•	Bass Control Only	•
S.E.A. (4-Mode: POP/ROCK/CLASSIC/JAZZ)					•	•
Surround Play			• (3D PHONIC)			
RHYTHMAX			•			
Headphone Output			•	•	•	•
AUX Input			•	•	Front AUX	Front AUX
Preset Stations	15 AM, 30 FM		•	•		•
	15 AM, 25 FM				•	
Video Out	Component		•			
	S-Video		•			
	Composite		•			
DVD/CD/VCD PLAYER						
Playable Formats	DVD-Audio		•			
	DVD-Video		•			
	DVD-RW/DVD-R (VIDEO Format)		•			
	CD/CD-R/RW		•	•	•	•
	SVCD/VCD		•			
	MP3 (CD-R/RW)		•	•	•	•
	WMA (CD-R/RW)		•			
	JPEG (CD-R/RW)		•			
DVD-Video: Slow/Zoom/Angle/Chapter Search/Time Search/Still/Resume Functions			•			
Dolby Digital/DTS Decoder			• (2ch)			
Digital Direct Progressive Scan Output			•			
Express Play Start			•			
Rolling Pickup			•			
5-Disc Changer			•	•		
1-bit D/A Converter			•	•	•	•
192kHz/24-bit Audio D/A Converter			•			
10-bit/54MHz Video D/A Converter			•			
Number of Programs			99	32	40	32
Program/Random/Repeat Play			•	•	•	•
Playable System			NTSC			
Optical Digital Output (Dolby Digital/DTS Digital Out)				•		
On-Screen Language			English/French/Spanish			
CASSETTE DECK						
Full-Logic Control					•	
Auto Reverse Transports					•	
CD Synchro Start Recording					•	•
ALC (Automatic recording Level Control)					•	•
SPEAKERS						
Detachable Grilles			•	•	•	
Magnetically Shielded			•			



JVC celebrates the 50th anniversary of the Newport Jazz Festival, and the 20th anniversary of the JVC Jazz Festival.



Newport Jazz Festival is a registered service mark of George Wein and Festival Productions, Inc.



The Newport Jazz Festival ticket from 1954



The 1954 festival site — The Casino tennis courts



Standing-room only at Fort Adams State Park, the current festival site



Carnegie Hall — The main site for the JVC Jazz Festival, New York

JVC's Time-Honored Tradition of Sponsoring World-Class Cultural and Sporting Events

The best of live jazz — brought to you by JVC. This year, the JVC Jazz Festival celebrates its 20th anniversary, and the Newport Jazz Festival, its 50th as the world's first outdoor jazz event.

JVC has sponsored jazz festivals, including the Newport Jazz Festival, every year since 1984 as a means of showcasing live jazz throughout the globe, and helping to nurture a universal musical culture and common bond among the many peoples of the world.

Enthusiastically supported by audiences worldwide, JVC's Jazz Festivals are now an established global tradition. In the past 20 years, more than 160 major jazz festivals have taken place under JVC sponsorship, with nearly four million people participating, and no less than 47 thousand musicians performing. To witness some of the most exciting moments for yourself, visit JVC's jazz website at <http://www.jvc-victor.co.jp/english/jazz/>

JVC contributes to the world through other global events as well. JVC sponsored FIFA World Cup™ and has been an official partner of the UEFA EURO Cup — for more than 20 years, respectively. JVC is also a key sponsor of major non-sporting events like the annual International Tokyo Video Festival.

JVC — we bring excitement and emotion to the world.



Official Partner of UEFA EURO 2004™



Design and specifications subject to change without notice. The photos of the products featured in this brochure may not be of actual products that are available in your country. All brand or product names may be trademarks and/or registered trademarks of their respective owners. Any rights not expressly granted herein are reserved.

Copyright © 2004, Victor Company of Japan, Limited (JVC). All Rights Reserved.



DISTRIBUTED BY

JVC COMPANY OF AMERICA
 DIVISION OF JVC AMERICAS CORP.
 1700 Valley Road, Wayne, N.J. 07470
 CONSUMER INFORMATION CENTER
 1-800-252-5722
<http://www.jvc.com>

Printed in Japan
 SCN-04043

"JVC" is the trademark or registered trademark of Victor Company of Japan, Limited.