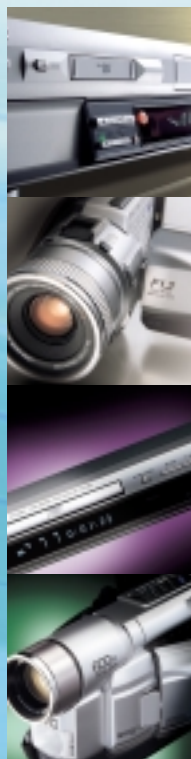


The
Inventor
of VHS

JVC®

VIDEO and MULTIMEDIA 2002



<http://www.jvc.com/>



Excite your senses.

C y b e r C a m F e a t u r e s

MiniDV Format

The de facto standard in digital video. In combination with JVC's **Super High-Band Processor**, MiniDV lets this digital video camera deliver a high resolution picture with way **over 500 lines of horizontal resolution**, and breathtaking colors with over **3 times the bandwidth** of conventional analog video.



SD Memory Card/ MultiMediaCard



Lets you **load digital image data directly from the camera to your computer** with an optional USB Reader/Writer, Floppy Disk Adapter or PC Card Adapter. A SD Memory Card or MultiMediaCard* comes provided.
* Provided card type differs depending on the model.

USB Terminal

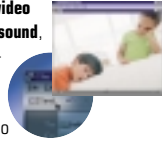
Enables **plug-and-play high-speed transfer of digital still images** to a USB-compatible personal computer. With **USB Mass Storage Class** support, the Memory card is automatically mounted on your computer screen as a drive unit for easy access just by connecting the USB cable.

DV Input/Output terminal (i.Link, IEEE 1394 compliant)

Enables high-speed digital-to-digital **image transfer** to a computer for post-production or **lossless dubbing** to/from another DV unit in **native DV format**.

MPEG-4 Email Video Clips

You can make short **video clips, complete with sound**, in MPEG-4 format — the preminent standard on the web. The small file size also makes convenient e-mail attachments.



Digital Sound Effects (MP3)

Have fun inserting **various sound effects** (pre-recorded on SD Memory Card/ MultiMediaCard and downloadable from JVC's web site) into your video as you record, or even afterwards into scenes you've already recorded.

- Explosion • Siren • Laughter • Race Car
- Door Bell • Buzzer • Fanfare • Applause
- Cheers • Boing • Scream • Jeers

Web Camera Function

Lets you connect the camera to your computer via USB interface and use it just like a Web-Camera for your teleconferencing and remote monitoring applications.*



* Using third party software such as Microsoft Netmeeting®

Digital Effects for Post-Production

CyberCam offers a **wide selection pro-style digital effects and scene transitions** — most of which can be applied **during playback**.

Special Effects

- Black & White* • Sepia* • Classic Film* • Strobe*
- Cinema • Backlight • Twilight • Sports • Snow
- Spotlight • Squeeze • Slow Shutter***
- Variable-Speed Shutter (1/60 — 1/4000)

Scene Transitions

- White Fader • Black Fader • Black & White Fader
- Shutter Wipe** • Slide Wipe** • Door Wipe**
- Corner Wipe** • Window Wipe** • Scroll Wipe**

* Applicable during playback
** All Wipes can be done from image to image, or image to/from black screen.
*** Not available for Megapixel models.
Depending on the model, some functions may not be available.
The availability of some special effects and scene transitions depends on the shooting mode. For the details please consult your JVC dealer.

Megapixel Wide CCD

With over **1,000,000 image-sensing pixels**, the camera can capture superior quality moving and still images. It helps bring out the **best of DV's high resolution recording** capabilities. And its wider surface area enables superior wide angle performance — just zoom out to maximum and you can go seamlessly to a wide angle picture equivalent to a 39.7 mm lens on a 35 mm film camera.



HG Digital Stills

By way of its **Progressive Shutter**, the camera is able to capture **HG Digital Stills** (1600 x 1200*/1280 x 960**/ 1024 x 768/640 x 480-pixel) a frame at a time so they have **less motion blur** and offer **1.5 times the vertical resolution** of conventional field stills. And once you transfer your shots to a PC, you can apply a variety of post-production effects using the supplied software.

* For GR-DV3000.
** For GR-DVM96/DVP7/DVL920/DVL820/DVL725.

High-Value Software Package*

Windows®/Macintosh®:

- **Digital Photo Navigator** for still image transfer; easy image re-sizing and Web file (HTML) creation, library management, slideshows and movie file (.AVI) creation, as well as superimpose title creation.⁽¹⁾⁽²⁾
- **PIXELA ImageMixer** for file management (stills, movies, sounds), easy non-linear MPEG-1 editing with scene transitions, MPEG-1 recording of live camera images onto hard disk, MPEG-1 ↔ MPEG-4 file format conversion, and pro-style retouching.⁽¹⁾⁽³⁾



Digital Photo Navigator



PIXELA ImageMixer

Windows®:

- **Presto! Mr. Photo3** for image cataloging, web page creation, and photo decorating (combined functions of Presto! Mr. Photo + PhotoAlbum).⁽²⁾
- **Presto! ImageFolio** for pro-style retouching with multi-layer mask support, custom layouts, and advanced special effects.⁽²⁾

Macintosh®:

- **Presto! Mr. Photo** for image cataloging, viewing and automatic Web page creation (HTML output).⁽³⁾
- **Presto! PhotoAlbum** for decorating photos with various templates.⁽⁴⁾

* Provided software differs depending on the model.
(1) Compatible with Windows®98/98SE/Me/2000Professional. (2) Compatible with Windows®95/98/98SE/Me/2000Professional.
(3) Compatible with Macintosh® Mac OS 8.6 — 9.1. (4) Compatible with Macintosh® Mac OS 8.1 — 9.1.

C a m c o r d e r F e a t u r e s

High Resolution Picture with Super VHS and Super VHS ET

Super VHS
+60% Better Picture Quality

S-VHS tape → S-VHS recording
S-VHS ET → S-VHS recording

VHS tape HG → VHS recording

As a format, Super VHS offers **more than 400 lines** of horizontal resolution. That's up to **60% more resolution** than ordinary video — great for large-screen viewing, and ideal for master tapes. For those really important recordings that you plan to keep, using S-VHS cassettes will assure the highest possible quality now and in the future. And with the **Super VHS ET** function, you can enjoy high resolution more conveniently, because it lets you record **Super VHS images on standard Compact VHS cassettes**.

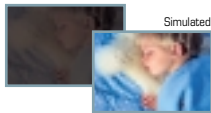
Digital Photo Capture* (with Digital Photo Navigator)

Easily capture digital stills from your video footage by serial (RS-232C) connection. Just hook-up the provided connector and run the provided **Digital Photo Navigator** program, and capture stills individually, or at selectable intervals from the tape, or **automatically import the scenes where you've used the Snapshot Mode in your videos**. The software also allows easy image re-sizing, Web file (HTML) creation, library management, slideshow viewing, and movie file (.AVI) creation so you can make more of your camcorder footage.

* Also applicable for GR-DVL320.

NightAlive

Boosts light sensitivity for a **bright picture** even in environments with minimal illumination.* And unlike infrared-based systems which turn the image black-and-white and have limitations on their effective distance, NightAlive always gives you **full color**, whether your subject is close by or far away. Turn it on, and wake up the colors without awakening your subject.



ON!

*JVC's NightAlive combines digital slow shutter and image processing technology. With rapidly moving subjects, image trails may be displayed.

Digital Picture Improvement Technology

Applied at every stage from the camera up until actual recording to optimize overall quality.

- **Super High-Band Processor*** restores high-band components in the luminance signal to raise resolution, using technology originally developed for digital video cameras.
- **Picture Stabilizer** recognizes the user's unique camera-shake characteristics to eliminate shaky pictures more effectively.
- **Digital TBC** (Time Base Corrector) helps eliminate picture jitter from playback images.
- **Digital CNR** (Chroma Noise Reduction) eliminates color noise and smear for a sharper, crisper playback picture.

* Not available for VHS models.

118 Combinations* of Digital Special Effects and Scene Transitions

You can enjoy the variety of these great **built-in** effects:

Digital Effects applicable during recording:

- Mosaic • Stretch • Nega/Posi • Sepia
- Black & White • Solarization • Blue Filter
- Red Filter • Strobe** • Classic Film** • Video Echo**

Digital Effects applicable during playback**:

- Sepia • Black & White • Solarization • Blue Filter
- Red Filter • Strobe • Classic Film • Video Echo

Scene Transitions:

- Black Fader • Mosaic Fader • Shutter Wipe
- Slide Wipe • Corner Wipe • Door Wipe
- Window Wipe • Snapshot** • Playback Fine Still**

* 70 combinations for certain models.
** Not available for certain models.

Built-in Battery Charger

You can take the camcorder on trips without having to take a separate, space-consuming charger along also. Its battery **"refresh" function** allows total discharge before charging, helping to prolong the battery's service life.

<Easy VHS Playback>

Just pop the cassette into the **provided VHS Playpak** and play it on your **VHS VCR**.

And Much More...

- **600x Digital Hyper Zoom** for extreme close-ups, with zoom speed variable by finger pressure. (Optical zoom = 16x)
- **110,000-Pixel 2.5"/3"/3.5" LCD Color Monitor** is tiltable for high-angle overhead shooting in crowds, low-angle shots, or even self-portraits.
- **High-Resolution Color Viewfinder** makes it easy to pick your subject out of "busy" surroundings.
- **Fine Still Playback** lets you pause any scene without any jittery on-screen noise.

- **Snapshot Mode** records a photo-like still image onto video, with a shutter sound effect.
- **Pro-cision 5-Head System** including **Flying Erase Head** provides excellent picture quality without sacrificing camcorder size, weight or battery time.
- **Instant Titles** with 8 preset titles in 4 selectable languages (English, Spanish, French, and Portuguese).
- **Animation & Timelapse*** for professional style photographic techniques.

*SP mode only

GR-DVL920

Mini DV NTSC Web Camera Function USB Terminal MPEG-4 Video Clips



3.5"



- MiniDV Format and PCM Digital Audio
- 1/3.8-inch 1.02 Megapixel Wide CCD
- 530 lines of resolution with Super High-Band Processor
- Built-in Digital Still Camera with HG Digital Stills (1280x960/1024x768/640x480-pixel)
- Web Camera Function
- MPEG-4 Email Video Clips
- NightAlive for full-spectrum low-light shooting
- 700x Super Digital Zoom with Spline Interpolation
- DV Input/Output (i.Link, IEEE 1394 compliant)
- USB High-Speed PC Interface
- SD Memory Card/MultiMediaCard Compatibility (16MB MultiMediaCard Provided)
- High-Resolution Color Viewfinder
- 3.5" Amorphous Silicon LCD Color Monitor
- Provided Software Package (Digital Photo Navigator/ImageMixer)
- Analog Input
- Built-in Auto Light
- 3-1/8" (W) x 3-9/16" (H) x 6-5/8" (D)

GR-DVL820/DVL725

Mini DV NTSC MultiMediaCard USB Terminal



GR-DVL820



2.5"

3.5"



GR-DVL725

- MiniDV Format and PCM Digital Audio
- 1/3.8-inch 1.02 Megapixel Wide CCD
- 530 lines of resolution with Super High-Band Processor
- Built-in Digital Still Camera with HG Digital Stills (1280x960/1024x768/640x480-pixel)
- NightAlive for full-spectrum low-light shooting
- 700x Super Digital Zoom with Spline Interpolation
- DV Input/Output (i.Link, IEEE 1394 compliant)
- USB High-Speed PC Interface
- SD Memory Card/MultiMediaCard Compatibility (8MB MultiMediaCard Provided)
- 3.5" (DVL820)/2.5" (DVL725) Amorphous Silicon LCD Color Monitor
- Provided Software Package (Digital Photo Navigator/Presto! Series)
- Analog Input (DVL820)
- Built-in Auto Light
- 3-1/8" (W) x 3-9/16" (H) x 6-5/8" (D)

GR-DVL720/DVL520

Mini DV NTSC MultiMediaCard USB Terminal

3.5"



GR-DVL720

2.5"



GR-DVL520

- MiniDV Format and PCM Digital Audio
- 1/4-inch 680,000-Pixel CCD
- 520 lines of resolution with Super High-Band Processor
- Built-in Digital Still Camera with HG Digital Stills (1024x768*/640x480-pixel)
- NightAlive for full-spectrum low-light shooting
- 700x Super Digital Zoom with Spline Interpolation
- DV Input/Output (i.Link, IEEE 1394 compliant)
- USB High-Speed PC Interface
- SD Memory Card/MultiMediaCard Compatibility (8MB MultiMediaCard Provided)
- 3.5" (DVL720)/2.5" (DVL520) Amorphous Silicon LCD Color Monitor
- Provided Software Package (Digital Photo Navigator/Presto! Series)
- Built-in Auto Light
- 3-1/8" (W) x 3-9/16" (H) x 6-5/8" (D)

* Resized Output

GR-DVL320/DVL120

Mini DV NTSC

2.5"



GR-DVL320

GR-DVL120

- MiniDV Format and PCM Digital Audio
- 1/4-inch 680,000-Pixel CCD
- 520 lines of resolution with Super High-Band Processor
- Digital Photo Capture (with Digital Photo Navigator) (DVL320)
- NightAlive for full-spectrum low-light shooting
- 700x Super Digital Zoom with Spline Interpolation
- DV Input/Output (i.Link, IEEE 1394 compliant)
- Digital Still Output (RS-232C) (DVL320)
- 2.5" Amorphous Silicon LCD Color Monitor
- Provided Software Package (Digital Photo Navigator/Presto! Series) (DVL320)
- Built-in Auto Light (DVL320)
- 3-1/8" (W) x 3-9/16" (H) x 6-5/8" (D) (DVL320)
- 3-5/16" (W) x 3-3/4" (H) x 8-13/16" (D) (DVL120)

Super VHS Camcorders

GR-SXM740

SVHS Super VHS ET

3.5"



- Digital Photo Capture (with Digital Photo Navigator)
- High Resolution Super VHS and Super VHS ET Recording
- NightAlive for full-spectrum low-light shooting
- Fine Still Playback
- 110,000-Pixel 3.5" LCD Color Monitor
- Digital Picture Improvement Technology
- Super High-Band Processor
- Picture Stabilizer
- Digital TBC (Time Base Corrector)
- Digital CNR (Chroma Noise Reduction)
- 600x Digital Hyper Zoom
- Snapshot Mode
- Built-in Auto Light
- Endurance Shooting
- 118 Combinations of Digital Special Effects and Scene Transitions
- Built-in Battery Charger
- 7-7/8" (W) x 4-7/16" (H) x 4-11/16" (D)

GR-SXM340

SVHS Super VHS ET

2.5"



- Digital Photo Capture (with Digital Photo Navigator)
- High Resolution Super VHS and Super VHS ET Recording
- NightAlive for full-spectrum low-light shooting
- Fine Still Playback
- 110,000-Pixel 2.5" LCD Color Monitor
- Digital Picture Improvement Technology
- Super High-Band Processor
- Picture Stabilizer
- Digital TBC (Time Base Corrector)
- Digital CNR (Chroma Noise Reduction)
- 600x Digital Hyper Zoom
- Snapshot Mode
- Built-in Auto Light
- Endurance Shooting
- 118 Combinations of Digital Special Effects and Scene Transitions
- Built-in Battery Charger
- 7-7/8" (W) x 4-7/16" (H) x 4-11/16" (D)

Compact VHS Camcorder

GR-SXM240

SVHS Super VHS ET

2.5"



- High Resolution Super VHS and Super VHS ET Recording
- 110,000-Pixel 2.5" LCD Color Monitor
- Digital Picture Improvement Technology
- Super High-Band Processor
- Picture Stabilizer
- Digital TBC (Time Base Corrector)
- Digital CNR (Chroma Noise Reduction)
- 600x Digital Hyper Zoom
- Built-in Auto Light
- Endurance Shooting
- 70 Combinations of Digital Special Effects and Scene Transitions
- Built-in Battery Charger
- 7-7/8" (W) x 4-7/16" (H) x 4-11/16" (D)

GR-AX970

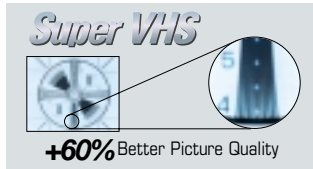
VHS Compact VHS COLOR VIEWFINDER



- Digital Picture Improvement Technology
- Picture Stabilizer
- Digital TBC (Time Base Corrector)
- Digital CNR (Chroma Noise Reduction)
- High-Resolution Color Viewfinder
- 600x Digital Hyper Zoom
- Endurance Shooting
- 70 Combinations of Digital Special Effects and Scene Transitions
- Built-in Battery Charger
- 7-7/8" (W) x 4-7/16" (H) x 4-9/16" (D)

V C R F e a t u r e s

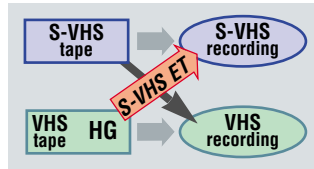
High Resolution Super VHS with DigiPure Technology



To maximize Super VHS's over 400 lines of horizontal resolution, JVC's DigiPure Technology improves picture quality, including a **digital frame memory** to make the following 3-D technologies possible:

- **Digital Wide TBC (Time Base Corrector)** digitally removes jitter from fluctuating video signals to boost stability.
- **Precision 3-D Color Circuit** for clear color separation without color bleeding.
- **Digital 3-D YNR/CNR** removes fine dust-like noise (YNR) and uneven color noise (CNR).
- **Precise Digital 3-D Y/C Separation** reduces dot interference at image borders and improves the S/N ratio.
- **Digital R²** applies edge correction to the luminance signal to enhance detail.

Super VHS ET (Expansion Technology)*



Lets you record high-resolution **Super VHS signals** on the more widely available **VHS tapes** (high grade recommended), thus delivering an over-60% boost in horizontal resolution at the touch of a button.

* Depending on tape quality some noise may appear when viewing EP recordings.

Special Effects Playback with 4MB Frame Memory

- **1.5x Playback** lets you speed up your viewing to reduce a 1-hour program to 40 minutes with a noiseless picture. (Audio is not played back.)
- **Smooth Slow Motion** lets you take a closer, distortionless look at those close calls and great plays.

Video Navigation System

Information on the programs you record is stored in **VCR's internal memory** – about **2000 titles!** So, to watch something you've recorded, just browse through the program lists – these can be listed by the **tape number** assigned to each cassette, **date** of recording, or program **category** (like movies, sports, news, etc.).

Easy Programming Options

Three recording functions to simplify timer recording.

- **VCR Plus+** for instant timer programming just by inputting a PlusCode™ number. You won't have to go through a lengthy set-up process either, since VCR Plus+ Guide Channels are set "on-the-fly" while you program.*
- **Express Programming** for easy manual timer setting just by following a single row of buttons on the remote.
- **24-Hr. Quick Programming** for simple timer setting of a program within 24 hours by push-and-turning the Advanced Jog dial.

Either way you go, you get worry-free timer recording because the **Permanent Program** function keeps programmed timer information **in the deck's memory** even if power is interrupted. **You won't have to re-program the timer after a power outage!**

* For some models, send in a coupon to get a free infrared cable box controller for timer-recording of cable programs.

Advanced Jog Dial on VCR

Everything from **frame-by-frame** playback to **variable-speed search** and **slow motion**, pause are precisely controllable by push-and-turning operation of the Jog Dial right on the front of the VCR. And 24-Hr. Quick Programming function offers simple timer setting.

Plug & Play

Simply hook up the antenna and **plug in the VCR!** You get...

- **Auto Clock Setting**, including current time and date, as well as biannual **Auto Daylight Saving Time** adjustments.
 - **Auto Tuner Setting** to lock-in all receivable channels in your area.
- With JVC, getting your VCR up and running is as easy as **Plug & Play!**

SQPB (S-VHS Quasi Playback)

Allows VHS VCR to **play back a tape recorded in Super VHS**, with regular VHS resolution. It is a convenient way to watch tapes recorded using an S-VHS deck or camcorder.*

* This function does not deliver Super VHS resolution.

And Much More...

- **Hi-Fi VHS Stereo with MTS Decoder** for maximum sound impact and recording of stereo/SAP TV broadcasts.
- **Active Video Calibration** automatically calibrates tape quality and measures video head condition to optimize long-term picture performance.
- **Picture Control** lets you choose from 4 different settings to best match the material you are viewing (AUTO, EDIT, SOFT, SHARP)
- **Pro-cision 19µ Heads** reduce crosstalk and improve EP playback picture.
- **Insert Editing with Flying Erase Head** replaces the original picture without affecting the sound, with glitch-free transition points between recordings.
- **Audio Dubbing** enables you to dub your own soundtrack over the original sound (monaural linear track) while leaving the picture as it is.
- **Multi-Brand TV/Cable/DSS Compatible Remote with Glow Keys** lets you control your VCR, TV, cable box or satellite (DIRECTV and DISH Network™) receiver using a single hand unit**, even in darkened rooms with its glow-in-the-dark buttons.
- **Shuttle Plus** for control of variable high-speed playback, slow motion, frame advance and on-screen menu operation with a touch-pad on the remote.
- **Auto SP → EP Timer Recording** automatically switches from SP to EP to fit the entire program on the tape.
- **Rec Link** enables the VCR to automatically turn on and record a program when a connected satellite receiver or cable box turns on**.
- **Child Lock** lets parents disable VCR operation while they're away.

* For compatible brands please consult your JVC dealer.
** External unit must be equipped with timer.

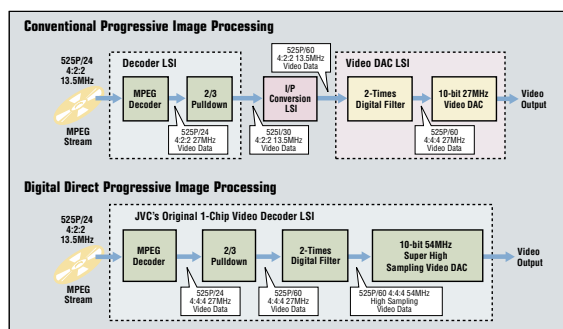
D V D F e a t u r e s

192kHz/24-bit P.E.M. D.D. Converter

DVD Audio offers a 192kHz/24-bit format for the highest fidelity consumers have ever experienced. For perfect compatibility with the new format's high specs, the XV-FA900BK/902SL and XV-SA600BK/602SL come with a 192kHz/24-bit P.E.M. D.D. audio converter, an 8-times oversampling digital filter and an exclusive 4th-order noise sharper to effectively shift noise from the audio range.

Digital Direct Progressive Scan Output

Direct conversion of NTSC DVD's 24 fps (frames per second) into double-density progressive 60 fps allows natural and smooth images with less noise and higher resolution. No Frame Blending occurs for blur-free images.



DVD Audio is the Global Standard
DVD Audio is the global standard created in conjunction with the ISC (International Steering Committee), three international record industry associations (RIAA, RIAJ and IFPI), five major international home entertainment software makers, and hardware and software makers in the world.

Superior advantages include:

1. **Specifications that far exceed those of Audio CD:**
The highest-quality stereo sound reproduction with a dynamic range of 144dB using a high 192kHz sampling frequency and a high 24-bit rate.
2. **Realistic multi-channel sound:**
Six channels of sound sampled at 96kHz and quantized with 24 bits for totally discrete multi-channel digital sound.
3. **Versatile interactive options:**
Moving pictures, browsable information, more.

High-bit (10-bit)/Super High Sampling (54MHz) Video D/A Converter

Additional bits and a super high sampling frequency ensure detailed high-quality images and clear, pure colors when you view DVD movies.



Versatile VFP

(Video Fine Processor)

With seven parameters to adjust (gamma curve, brightness, contrast, color, tint, sharpness and Y delay), the processor gives you the exceptional versatility to control images, according to your personal preferences.

Innovative 7-disc Carousel Changer

The XV-FA900BK/902SL is a compact, space-saving 7-disc carousel changer no larger than a typical 5-disc player.



You can conveniently play a mix of seven DVDs, CDs, CD-Rs, CD-RWs, VCDs and MP3/JPEG files on CD-R/RW. What's more, the Play & Exchange feature lets you change six discs while the seventh is played, and enjoy continuous, non-stop entertainment.

3D-PHONIC for Virtual Surround Sound

Enjoy 3-dimensional theater sound from just two speakers up front. JVC 3D-PHONIC is ready for Dolby Digital as well as Dolby Pro Logic.

Note: Some CD-R, CD-RW (Linear PCM)/MP3/JPEG/SVCD/VCD discs, as well as some DVD-R discs, may not be played properly depending on their condition.



Quality & Economy
Super VHS ET
 High Quality Super VHS Compatibility
S-VHS QUALITY ON VHS TAPE

High Resolution Super VHS VCRs
HR-S9911 **SVHS Super VHS ET** **Hi-Fi STEREO** **VCR Plus+ Easy Setup**



- High Resolution Super VHS • Super VHS ET Recording • DigiPure Technology with 4MB Frame Memory [• Digital Wide TBC • Precision 3-D Color Circuit • Digital 3-D YNR/CNR • Precise Digital 3-D Y/C Separation • Digital R3 Picture System] • Special Effects Playback with 4MB Frame Memory [• 1.5x Playback • Smooth Slow Motion] • Video Navigation • Hi-Fi VHS Stereo with MTS Decoder • VCR Plus+ with Cable Box Control • Insert Editing with Flying Erase Head and Audio Dubbing • Advanced Jog Dial on VCR • Plug & Play • Active Video Calibration • Picture Control • Multi-Brand TV/Cable/DBS Compatible Remote • J-Terminal for use in a computer controlled system
- 17-3/16" (W) x 4-3/16" (H) x 13-9/16" (D)

HR-S5911/S5901

SVHS Super VHS ET **Hi-Fi STEREO** **VCR Plus+ Easy Setup**



- High Resolution Super VHS • Super VHS ET Recording • Hi-Fi VHS Stereo with MTS Decoder • VCR Plus+ (Cable Box Controller ready) • Insert Editing with Flying Erase Head and Audio Dubbing • Advanced Jog Dial on VCR • Plug & Play • Active Video Calibration • Picture Control • Multi-Brand TV/Cable/DBS Compatible Remote with Glow-Keys • Child Lock • AV Compu Link • 17-3/16" (W) x 3-3/4" (H) x 9-3/4" (D)

HR-S3911/S3901

SVHS Super VHS ET **Hi-Fi STEREO** **VCR Plus+ Easy Setup**

HR-S2901 **SVHS Super VHS ET** **Hi-Fi STEREO**



- High Resolution Super VHS • Super VHS ET Recording • Hi-Fi VHS Stereo with MTS Decoder • VCR Plus+ (Cable Box Controller ready) • Advanced Jog Dial on VCR • Plug & Play • Active Video Calibration • Picture Control • Multi-Brand TV/Cable/DBS Compatible Remote • Shuttle Plus • Express Programming • Auto SP→EP Timer Recording • 17-3/16" (W) x 3-3/4" (H) x 9-3/4" (D)

- High Resolution Super VHS • Super VHS ET Recording • Hi-Fi VHS Stereo with MTS Decoder • Plug & Play • Active Video Calibration • Picture Control • Full-Function Remote Control • Shuttle Plus • Express Programming • Auto SP→EP Timer Recording • 17-3/16" (W) x 3-3/4" (H) x 9-3/4" (D)

User-Friendly VHS Value

HR-J691

VHS Hi-Fi STEREO SQPB

HR-A591

VHS Hi-Fi STEREO SQPB

HR-FS1

VHS Hi-Fi STEREO VCR Plus+ Easy Setup SQPB



- Hi-Fi VHS Stereo with MTS Decoder • Plug & Play • SQPB (S-VHS Quasi Playback) • Picture Control • Full-Function Remote Control • Shuttle Plus • Express Programming • Auto SP→EP Timer Recording • Pro-cision 19µ Heads • 17-3/16" (W) x 3-3/4" (H) x 9-3/4" (D)



- Hi-Fi VHS Stereo with MTS Decoder • SQPB (S-VHS Quasi Playback) • Auto Tuner Pre-set • Full-Function Remote Control • Pro-cision 19µ Heads • 14-3/16" (W) x 3-3/16" (H) x 8-13/16" (D)



- Hi-Fi VHS Stereo with MTS Decoder • VCR Plus+ Instant Timer Programming • Plug & Play • SQPB (S-VHS Quasi Playback) • Picture Control • Multi-Brand TV/Cable/DBS Compatible Remote with Glow-Keys • Shuttle Plus • Express Programming • Auto SP→EP Timer Recording • Pro-cision 19µ Heads • Color LCD Mode Indicator • 3-15/16" (W) x 10-7/8" (H) x 10-7/8" (D)

D-VHS Recorder — The New Evolution In Video

HM-DH30000

DVHS **DOLBY DIGITAL** **COMPATIBLE VIDEO OUT** **SVHS Super VHS ET** **Hi-Fi STEREO** **VCR Plus+ Easy Setup**

HDVideo DTHEATER™

FULL SPEC HDTV COMPATIBLE

- 4-Hr. HDTV Digital Bitstream Recording/Playback with HS Mode
- Built-in MPEG2 HD Decoder compatible with "D-Theater" HD software
- Digital Broadcast Recording ready including HDTV* and SDTV*
- MPEG2 CODEC (encoding/decoding) for Digital Recording of analog sources [• 8-Hr Digital Recording in STD Mode • 24-Hr. Digital Recording in LS3 Mode • Frame Synchronizer improves digital dubbing quality for analog input sources]
- 5.1 ch Dolby Digital (AC3) Optical Output • DV Input (i.Link, IEEE 1394) for direct dubbing from DV footage • High Resolution Super VHS [• DigiPure Technology including Digital Wide TBC and 4 MB Frame Memory • Super VHS ET Recording]
- VHS Compatibility • 17-15/16" (W) x 4-3/16" (H) x 13-5/8" (D)



* Requires Set Top Box with IEEE1394 connection.
 ** Recording time shown here is based on using DF480 cassette.

Feature Checklists

Camcorder	GR-DV3000	GR-DVP7	GR-DVM96	GR-DVM76	GR-DVL920	GR-DVL620	GR-DVL725	GR-DVL720	GR-DVL520	GR-DVL320	GR-DVL120	GR-SXM740	GR-SXM340	GR-SXM240	GR-AX970
Format	DV	DV	DV	DV	DV	DV	DV	DV	DV	DV	DV	Super VHS	Super VHS	Super VHS	VHS
* No. of Pixels in CCD	1330K	1020K	1020K	680K	1020K	1020K	1020K	680K	680K	680K	680K	270K	270K	270K	270K
* Optical Zoom Ratio	10:1	10:1	10:1	10:1	10:1	10:1	10:1	10:1	10:1	10:1	16:1	16:1	16:1	16:1	16:1
* Digital Hyper Zoom	300:1/40:1	200:1/40:1	200:1/40:1	200:1/40:1	700:1/40:1	700:1/40:1	700:1/40:1	700:1/40:1	700:1/40:1	700:1/40:1	700:1/40:1	600:1/50:1	600:1/50:1	600:1/50:1	600:1/50:1
Max. Shutter Speed (sec.)	1/4000	1/4000	1/4000	1/4000	1/4000	1/4000	1/4000	1/4000	1/4000	1/4000	1/4000	1/2000	1/2000	1/2000	1/2000
* Super High-Band Processor	●	●	●	●	●	●	●	●	●	●	●	●	●	●	●
* HG Digital Still	●	●	●	●	●	●	●	●	●	●	●	●	●	●	●
* Digital Photo Capture	●	●	●	●	●	●	●	●	●	●	●	●	●	●	●
* SD Memory Card/ MultiMediaCard Compatibility	●	●	●	●	●	●	●	●	●	●	●	●	●	●	●
* Web Camera Function	●	●	●	●	●	●	●	●	●	●	●	●	●	●	●
* MP3 Digital Sound Effects	●	●	●	●	●	●	●	●	●	●	●	●	●	●	●
* MPEG-4 Email Video Clip	●	●	●	●	●	●	●	●	●	●	●	●	●	●	●
* NightAlive	●	●	●	●	●	●	●	●	●	●	●	●	●	●	●
* USB Terminal	●	●	●	●	●	●	●	●	●	●	●	●	●	●	●
Analog Input	●	●	●	●	●	●	●	●	●	●	●	●	●	●	●
* DV In/Out Terminal	●	●	●	●	●	●	●	●	●	●	●	●	●	●	●
PC Terminal (RS-232C)	●	●	●	●	●	●	●	●	●	●	●	●	●	●	●
Built-in Auto Light	●	●	●	●	●	●	●	●	●	●	●	●	●	●	●
Built-in Flash	●	●	●	●	●	●	●	●	●	●	●	●	●	●	●
Info Shoe	●	●	●	●	●	●	●	●	●	●	●	●	●	●	●
* Digital Effects Playback	●	●	●	●	●	●	●	●	●	●	●	●	●	●	●
Random Assemble Editing	●b	●b	●b	●b	●b	●b	●b/c	●b	●b/c	●b/c	●b/c	●b/c	●b/c	●b/c	●b/c
* Color Viewfinder	●	●	●	●	●	●	●	●	●	●	●	●	●	●	●
* LCD Swing Monitor	●d	●d	●	●	●	●	●	●	●	●	●	●	●	●	●
* Picture Stabilizer	●	●	●	●	●	●	●	●	●	●	●	●	●	●	●
* Digital TBC and CNR	●	●	●	●	●	●	●	●	●	●	●	●	●	●	●
* Snapshot Mode	●	●	●	●	●	●	●	●	●	●	●	●	●	●	●
* Digital Special Effects	●	●	●	●	●	●	●	●	●	●	●	●	●	●	●
* Digital Wipes/Fades	●	●	●	●	●	●	●	●	●	●	●	●e/f	●e/f	●e/f	●e/f
* Built-in Battery Charger	●	●	●	●	●	●	●	●	●	●	●	●	●	●	●
* Animation/Timelapse	●/-	●/-	●/-	●/-	●/-	●/-	●/-	●/-	●/-	●/-	●/-	●	●	●	●
Super LoLux	●	●	●	●	●	●	●	●	●	●	●	●	●	●	●
Audio Dubbing/Insert Editing	●	●	●	●	●	●	●	●	●	●	●	●	●	●	●
Provided Remote Control	●g	●g	●g	●g	●g	●g	●g	●g	●g	●g	●g	●g	●g	●g	●g

● = Yes (a) With Digital Photo Navigator; (b) With digital effect/scene transition selection; (c) Using optional Multi Brand Remote; (d) Polycrystalline Silicon TFT active matrix monitor; (e) Wipe by black screen only; (f) Black and Mosaic Fader only; (g) Multi Brand Remote

VCR	HR-S9911	HR-S5911	HR-S9901	HR-S3911	HR-S3901	HR-S2901	HR-J691	HR-A591	HR-FS1	HM-HDS1	HR-DVS3	
Format	S-VHS	S-VHS	S-VHS	S-VHS	S-VHS	S-VHS	VHS	VHS	VHS	S-VHS	Mini DV	S-VHS
Head Configuration	DA-4 + HiFi	DA-4 + HiFi	DA-4 + HiFi	DA-4 + HiFi	DA-4 + HiFi	DA-4 + HiFi	DA-4 + HiFi	DA-4 + HiFi	DA-4 + HiFi	MPEG 2	DV2	DA-4 + HiFi
* Hi-Fi Stereo/MTS Decoder	●	●	●	●	●	●	●	●	●	●	●	●
* Super VHS/Super VHS ET	●	●	●	●	●	●	●	●	●	●	●	●
* Special Effects Playback	●a											
* Video Navigation	●											
Internal 40GB Hard Disk Drive										●		
Live Memory										●		
One-Touch Dubbing											Both ways	
Random Assemble Editing										HDD+ S-VHS/VHS	DV→VHS	
* VCR Plus+ with Cable Box Control	●	●b	●b	●b	●b	●			●c		●	●
* Active Video Calibration	●	●	●	●	●	●	●	●	●	●	●	●
* Plug & Play	●	●	●	●	●	●	●	●	●	●	●	●
* Picture Control	●	●	●	●	●	●	●	●	●	●	●	●
* Advanced Jog Dial on VCR	●e	●e	●e	●e	●e	●						●
* Auto SP→EP Timer Recording	●	●	●	●	●	●	●	●	●	●	●	●
* Express Programming	●	●	●	●	●	●	●	●	●	●	●	●
* Flying Erase Head/Insert Editing	●	●	●	●	●	●	●	●	●	●	●	●
* Audio Dubbing	●	●	●	●	●	●	●	●	●	●	●	●
* Shuttle Plus	●	●	●	●	●	●	●	●	●	●	●	●
* Multi-Brand Remote	●	●	●	●	●	●	●	●	●	●	●	●
TV/Cable Box/DBS Box with Glow Keys	●	●	●	●	●	●	●	●	●	●	●	●
Full-Function Remote											with Jog/Shuttle	
* SQPB	●	●	●	●	●	●	●	●	●	●	●	●
Gold-Plated Front AV Inputs	●	Silver	Silver	Silver	Silver	Silver	Silver	Silver	●	●	●	●
* Child Lock	●	●	●	●	●	●	●	●	●	●	●	●
AV Compu Link	●	●	●	●	●	●	●	●	●	●	●	●
Tape Position Indicator	●	●	●	●	●	●	●	●	●	●	●	●
1-Year/8-Event Timer	●	●	●	●	●	●	●	●	●	●	●	●
Slow Motion	●	●	●	●	●	●	●	●	●	●	●	●
Skip Search	●	●	●	●	●	●	●	●	●	●	●	●
Repeat Playback	●	●	●	●	●	●	●	●	●	●	●	●
Rec Link	●	●	●	●	●	●	●	●	●	●	●	●
Surge Protection Circuitry	●	●	●	●	●	●	●	●	●	●	●	●
J - Terminal	●	●	●	●	●	●	●	●	●	●	●	●

● = Yes (a) 1.5x Playback and Smooth Slow Motion; (b) Cable Box Control Ready; (c) Without Cable Box Control; (d) Auto Tuner Pre-set; (e) With 24 Hr. Quick Programming function; (f) 1-Month/8-Event Timer; (g) 1-Year/16-Event Timer

DVD	XV-FA902SL/900BK	XV-SA602SL/600BK	XV-S502SL/500BK	XV-S402SL/400BK	XV-S302SL/300BK	HR-XVC1
MECHANISM/SERVO						
Type	7-Disc Carousel, Play & Exchange	Single	Single	Single	Single	Single
<Playable Formats>	●					
DVD-Audio	●					
DVD-Video	●	●	●	●	●	●
DVD-R	●	●	●	●	●	●
CD	●	●	●	●	●	●
SVCD/VCD	●	●	●	●	●	●(VCD)
CD-R/RW	●	●	●	●	●	●
MP3 (CD-R/RW)	●	●	●	●	●	●
JPEG (CD-R/RW)	●	●	●	●	●	●
AUDIO						
Audio D/A Converter (P.E.M. D.D. Converter)	192kHz/24-bit	192kHz/24-bit	192kHz/24-bit	192kHz/24-bit	96kHz/24-bit	96kHz/24-bit
Dolby Digital/DTS Decoder Built-in	●	●	●	●	●	●
3-D PHONIC Spatializer	●	●	●	●	●	●
VIDEO						
Progressive Scan Output	●	●	●	●	●	●
Video D/A Converter	10-bit/54MHz	10-bit/54MHz	10-bit/54MHz	10-bit/27MHz	10-bit/27MHz	10-bit/27MHz
VFP (Video Fine Processor): Number of Parameters	7	7	7			
THEATER Position: Number of Steps				3	3	
RESUME/DIGEST/STROBE/ANGLE LIST	●	●	●	●	●	●
ZOOM Play	●(13 Steps)	●(13 Steps)	●(13 Steps)	●	●	●
TERMINALS						
<Video Out>						
Component/S-Video/Composite	●(Gold)	●(Gold)	●	●	●	●
RF Output	●	●	●	●	●	●
<Audio Out>						
Front L/R	●(Gold)	●(Gold)	●	●	●	●
Center_Rear L/R_Subwoofer	●(Gold)	●(Gold)	●	●	●	●
Optical Digital Out	●	●	●	●	●	●
AV Compu Link	●	●	●	●	●	●
GENERAL						
<On-Screen Display>						
GUI (Graphical User Interface)	●	●	●	●	●	●
On-Screen Language	Eng./Fre./Spa.	Eng./Fre./Spa.	Eng./Fre./Spa.	Eng./Fre./Spa.	Eng./Fre./Spa.	Eng./Fre./Spa.
Remote	●	●	●	●	●	●
Multi-Brand	●	●	●	●	●	●
Multi-Brand	●	●	●	●	●	●

More information on features marked with "*" can be found inside this brochure.

JVC are officially accredited for their Quality Systems (ISO9001) and Environmental Management Systems (ISO14001).





E. & O. E. Design and specifications subject to change without notice. Certain accessories may not be available in certain areas. 3D-PHONIC for virtual surround sound. Some CD-R and CD-RW discs may not be played properly depending on their condition. "Dolby", the double-D symbol and "Dolby Digital" are trademarks of Dolby Laboratories Licensing Corporation. "DTS" is a trademark of Digital Theater Systems, Inc. 3D-PHONIC is a trademark of Victor Company of Japan, Limited (JVC). VCR Plus+ C3 and PlusCode are trademarks of Gemstar Development Corporation. The VCR Plus+ system is manufactured under license from Gemstar Development Corporation. DSS™ is an official trademark of DIRECTV, Inc., a unit of GM Hughes Electronics. DISH Network™ is a trademark of EchoStar Communications Corporation. All photographs and screenshots in this catalog are simulated. All brand names and product names are trademarks, or trade names of their respective holders. Microsoft® and Windows® are either registered trademarks or trademarks of Microsoft Corporation in the United States and/or other countries. Macintosh® is a registered trademark of Apple Computer, Inc. It may be unlawful to record or play back copyrighted material without the consent of the copyright owner. Copyright © 2002, Victor Company of Japan, Limited (JVC). All Rights Reserved.

JVC Home Page <http://www.jvc.com/>



AVAILABLE AT



Official Partner of 2002 FIFA World Cup™

JVC COMPANY OF AMERICA
DIVISION OF JVC AMERICAS CORP.
1700 Valley Road, Wayne, N.J. 07470
CONSUMER INFORMATION CENTER
1-800-252-5722