

JVC®

The
Inventor
of VHS

VIDEO and
MULTIMEDIA
2001



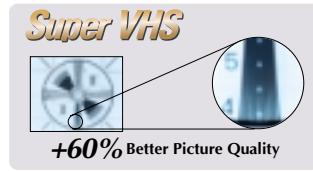
<http://www.jvc.com>



Excite your senses.

VCR FEATURES

High Resolution Super VHS with DigiPure Technology

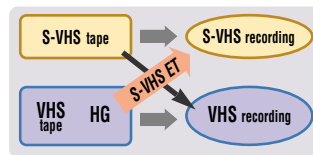


To maximize Super VHS's over 400 lines of horizontal resolution, JVC's DigiPure Technology improves picture quality, including a **digital frame memory** to make the following new 3-D technologies possible:

- **Digital Wide TBC (Time Base Corrector)** digitally removes jitter from fluctuating video signals to boost stability.
- **Precision 3-D Color Circuit** for clear color separation without color bleeding.
- **Digital Wide TBC (Time Base Corrector)** digitally removes jitter from fluctuating video signals to boost stability.
- **Digital 3-D YNR/CNR** removes fine dust-like noise (YNR) and uneven color noise (CNR).
- **Precise Digital 3-D Y/C Separation** reduces dot interference at image borders and improves the S/N ratio.
- **Digital R³** applies edge correction to the luminance signal to enhance detail.

Super VHS ET (Expansion Technology)

Lets you record high-resolution **Super VHS signals** on the more widely available **VHS tapes** (high grade recommended), thus delivering an over-60% boost in horizontal resolution at the touch of a button. (Depending on tape quality some noise may appear when viewing EP recordings.)



TimeScan and Pro-Slow with Dynamic Drum System

TimeScan offers **noiseless** variable search, in **forward and reverse**, at up to **7 times normal**. The **Digital Audio Memory** plays back the sound at normal speed even when scanning in reverse.* And **Pro-Slow** gives you **Professional style slow motion** like you're used to seeing on TV.

*TimeScan audio is monaural. Sound loss may be noticeable particularly during higher speeds.

Video Navigation System

Information on the programs you record is stored in VCR's internal memory – about **2000 titles!** So, to watch something you've recorded, just browse through the program lists by **tape number, date of recording, or program category**. It's a breeze to search through and locate the exact program you want to watch. Just choose from the following sorting ways to find recorded programs:

- **Tape Number Sorting** looks for a tape by its number, and displays tape title and program titles that you input, so you can easily check the contents.
- **Rec Date Sorting** lists programs by the date they were recorded on. (Newer recordings listed first.)
- **Category Sorting** categorizes programs into 7 different types, such as movies, sports, and so on.

High Quality Picture Performance

Precision 19µ Heads

These Super VHS-grade heads are only **19 microns** wide to **minimize crosstalk** during EP playback, contributing to **sharper image contours** and highly **stable colors**.

Active Video Calibration/Auto Picture

Automatically calibrates **tape quality** and **video head condition** to optimize and **maintain performance for the lifetime of the VCR**. Active Video Calibration works for both recording and playback while Auto Picture is operative at the start of playback.

Easy Programming Options

Three programming functions to simplify timer recording. **VCR Plus+** for instant timer programming just by inputting a PlusCode™ number. You won't have to go through a lengthy set-up process either, since VCR Plus+ Guide Channels are set "on-the-fly" while you program.* **Express Programming** for easy manual timer setting just by following a single row of buttons on the remote. **24-Hr. Quick Programming** for simple timer setting of a program within 24 hours by push-and-turning the Advanced Jog dial. Either way you go, you get worry-free timer recording because the **Permanent Program** function keeps programmed timer information in the **deck's memory** even if power is interrupted. **You won't have to re-program the timer after a power outage!**

*For some models, send in a coupon to get a free infrared cable box controller for timer-recording of cable programs.

Advanced Jog Dial on VCR

Everything from **frame-by-frame** playback to **variable-speed search and slow motion, pause** are precisely controllable by push-and-turning operation of the Jog Dial right on the front of the VCR.

Plug & Play

Simply hook up the antenna and **plug in the VCR!** You get...

- **Auto Clock Setting**, including current time and date, as well as biannual **Auto Daylight Saving Time** adjustments.
- **Auto Tuner Setting** to lock-in all receivable channels in your area.

With JVC, getting your VCR up and running is as easy as **Plug & Play!**

SQPB (S-VHS Quasi Playback)

Allows VHS VCR to **play back a tape recorded in Super VHS**, with regular VHS resolution. It is a convenient way to watch tapes recorded using an S-VHS deck or camcorder.

Picture Control

Lets you choose from 4 different settings to **best match the material you are viewing**.

- AUTO:** Provides optimized picture benefits of Active Video Calibration or Auto Picture.*
 - EDIT:** Minimizes picture degradation during editing (recording and playback).
 - SOFT:** Reduces image coarseness when viewing overplayed tapes containing a lot of video noise.
 - SHARP:** Clearer, sharper-edged picture when viewing images with lots of flat, same-colored surfaces such as cartoons.
- *On models equipped with Auto Picture.

And Much More...

- **Hi-Fi VHS Stereo with MTS Decoder** for maximum sound impact and recording of stereo/SAP TV broadcasts.
- **Insert Editing with Flying Erase Head** replaces the original picture without affecting the sound, with glitch-free transition points between recordings.
- **Audio Dubbing** enables you to dub your own soundtrack over the original sound (monaural linear track) while leaving the picture as it is.
- **Multi-Brand TV/Cable/DBS Compatible Remote with Glow-in-the-Dark Keys** lets you control your VCR, TV, cable box or satellite (DIRECTV and DISH Network™) receiver using a single hand unit*, even in darkened rooms with its glow-in-the-dark buttons.
- **Shuttle Plus** for control of variable high-speed playback, slow motion, frame advance and on-screen menu operation with a touch-pad on the remote.
- **Auto SP→EP Timer Recording** automatically switches from SP to EP to fit the entire program on the tape.
- **Child Lock** lets parents disable VCR operation while they're away.
- **Gold-Plated Front AV Inputs** ensure signal purity and simplify source connection.
- **AV Compu Link** for one-touch control of entire AV system (only on select JVC products).

*For compatible brands please consult your JVC dealer.

DVD FEATURES

New 1-bit P.E.M. D. D. Converter — compatible with DVD Audio (XV-SA75GD/D723GD)

DVD Audio, a new global standard for next-generation audio format, offers the 192kHz/24-bit format for the highest fidelity which you have ever experienced. To make its DVD player compatible with high specs, JVC developed a new version of its 1-bit P.E.M. D.D. converter. With an improved noise shaper, the new P.E.M. D.D. Converter is compatible with DVD's 192kHz/24-bit format to deliver the highest sound quality.

Progressive Scan Output and 10-bit/54MHz video D/A Converter (XV-S65GD/SA75GD/D723GD)

Pictures on DVDs are normally recorded in 24p (24 frames per second progressive) format as on film. When they are played back on a conventional interlaced screen, images can flicker or blur. But JVC's Direct Progressive Scanning turns the 24p format directly into the 60p format for display on TV with no intervening steps. You get high-resolution images that are stable and sharp. Moreover, the high-speed 54MHz video D/A converter oversamples the progressive scan pictures to ensure truer-to-the-original images with minimum loss.

*This function is effective only when used with Progressive Scan monitor.

Component video, S-video and composite video outputs

Thanks to component video outputs — separate outputs for Pr, Pb and Y — the viewer enjoys pictures that are free from smear and bleed. Colors are reproduced with depth.



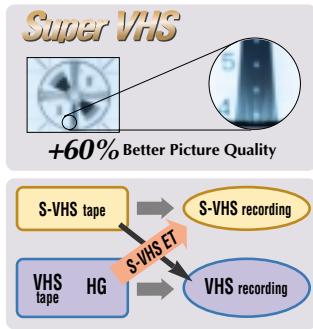
CD-R/RW Compatibility

All DVD players feature a dual wavelength pickup of playback of CD-R/RW discs.* Moreover, XV-SA75GD/S65GD is also capable of playing back MP3 recorded on CD-R/RW discs.

*Can play back only CD-R/RW discs recorded in audio CD format. Playback of these discs may not be possible depending on recording condition.

CAMCORDER FEATURES

High Resolution Picture with Super VHS and Super VHS ET



As a format, Super VHS offers **more than 400 lines** of horizontal resolution. That's up to **60% more resolution** than ordinary video — great for large-screen viewing, and ideal for master tapes. For those really important recordings that you plan to keep, using S-VHS cassettes will assure the highest possible quality now and in the future. And with the **Super VHS ET** function, you can enjoy high resolution more conveniently, because it lets you record **Super VHS images on standard Compact VHS cassettes**.

Built-in Digital Flash Memory

Lets you shoot and store up to **60** (standard mode) or **30** (fine mode) full-size **VGA images** in the internal memory.

NightAlive



Boosts light sensitivity for a bright picture even in environments with minimal illumination.* And unlike infrared-based systems which turn the image black-and-white and have limitations on their effective distance, NightAlive always gives you full color, whether your subject is closeby or far away. Turn it on, and wake up the colors without awakening your subject.

*JVC's NightAlive combines digital slow shutter and image processing technology. This function is not suitable for rapidly moving subjects.

Digital TBC and Digital CNR

Bring out the best of Super VHS's playback picture*. The **Digital TBC** (Time Base Corrector) helps eliminate picture jitter while **Digital CNR** (Chroma Noise Reduction) eliminates color noise and smear.

*Also available for VHS playback.

High Quality Picture with Digital Signal Processing

Applied throughout, from the camera section to the recorder section. Enables clear recording with a **superior S/N ratio**, and detailed playback images that reproduce even the **subtlest nuances**.

Digital Hyper Zoom

In addition to 16x Optical Hyper Zoom that lets you zoom to **16x telephoto** for great optical closeups in approximately **2 seconds**, you can also shoot ultra-closeups with 400x Digital Hyper Zoom. **Zoom speed is variable** by finger pressure.

112,000-Pixel 2.5"/3" LCD Color Monitor

The 2.5" or 3" high-resolution viewscreen rotates 270° so you can tilt it down for **high-angle** overhead shooting in crowds, tilt it up for **low-angle** shots, or point it forward for **self-portraits**.

Endurance Shooting

Thanks to **reduced power consumption**, you can shoot more video per battery charge — **approx. 2 hours*** with supplied battery pack.

*When using viewfinder. Even longer shooting time possible using optional high capacity battery pack. Actual shooting time may differ from the average time shown here depending on the model.

Internal Battery Charger

Means you can take the camcorder on trips without having to take a separate, space-consuming charger along also. Its battery "**refresh**" function allows total discharge before charging, helping to prolong the battery's service life.

<Easy VHS Playback>

Just pop the cassette into the **provided VHS Playpak** and play it on your **VHS VCR**.

88 Combinations* of Digital Special Effects and Wipes/Fades

You can use any of these great **built-in effects**:

Effects applicable during recording:

• Nega/Posi • Stretch • Mosaic • Sepia • Black & White • Strobe** • Classic Film** • Video Echo**

Effects applicable during playback**:

• Sepia • Black & White • Strobe • Classic Film • Video Echo • Playback Zoom • Playback Snapshot

Digital Wipes and Fades:

• Black Fader • Mosaic Fader • Shutter Wipe • Slide Wipe • Corner Wipe • Door Wipe • Window Wipe

* 46 combinations for certain models.

** Not available for certain models.



Mosaic Fader

And Much More...

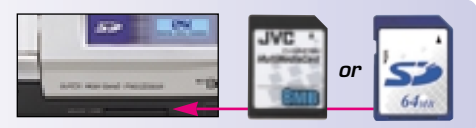
- **Picture Stabilizer** recognizes the user's unique camera-shake characteristics to eliminate shaky pictures more effectively.
- **Built-in Auto Light** automatically turns on or off as required.
- **High-Resolution Color Viewfinder** makes it easy to pick your subject out of "busy" surroundings.
- **Super LoLux** for shooting in low light of less than 1 lux.
- **Fine Still Playback** lets you pause any scene without any jittery on-screen noise.
- **Snapshot Mode** records a photo-like still image onto video, with a shutter sound effect.
- **Pro-ision 5-Head System including Flying Erase Head** provides excellent picture quality without sacrificing camcorder size, weight or battery time.
- **Instant Titles** with 8 preset titles in 4 selectable languages (English, Spanish, French, and Portuguese).
- **Animation & Timelapse*** for professional style photographic techniques.

*SP mode only

CYBERCAM FEATURES

MiniDV Format

The *de facto* standard in digital video. In combination with JVC's Super Hi-Band Processor, MiniDV lets this digital video camera deliver a high resolution picture with 520 lines of horizontal resolution, and breathtaking colors with over 3 times the bandwidth of conventional analog video.



Built-in Digital Still Camera

Lets you shoot digital still photos and store them on MultiMediaCard or SD Memory Card. You get maximum value because the camcorder's high zoom magnification and impressive effects* can be used even when taking digital stills. And once you transfer your shots to a PC, you can apply a variety of post-production effects using the supplied software.

*Not available for GR-DV2000.

MultiMediaCard/SD Memory Card

Lets you load digital image data directly from the camera to your computer with an optional Floppy Disk Adapter or PC Card Adapter. A MultiMediaCard or SD Memory Card* comes provided. The SD Memory Card, a next-generation mainstream compact storage media, will ensure high-speed transferability of larger volumes of data.

*Provided card type differs depending on the model.

USB Terminal

Enables high-speed transfer of digital still images to a USB-compatible personal computer. With USB Mass Storage Class support, the camera's icon is automatically mounted on your computer screen for easy access just by connecting the USB cable.

DV Input/Output terminal (i.Link, IEEE 1394 compliant)

Enables high-speed digital-to-digital image transfer to a computer for post-production or lossless dubbing to/from another DV unit in native DV format.

Digital Sound Effects (MP3) (GR-DVM90/DVM75/DVP3)

Have fun inserting various sound effects (pre-recorded on MultiMediaCard/SD Memory Card and downloadable from JVC's web site) into your video as you record, or even afterwards into scenes you've already recorded.

- Explosion • Siren • Laughter • Race Car
- Door Bell • Buzzer • Fanfare • Applause
- Cheers • Boing • Scream • Jeers

Email Video Clips (GR-DVM90/DVM75/DVP3)

You can make short video clips, complete with sound, to send along with your email or upload to the Web. GR-DVM75/DVP3 creates clips in the Web-standard MPEG4 format, while GR-DVM90 uses an exclusive JVC format you can easily play back with the provided viewer application.*

*Also available for download at JVC website.

High-Value Software Package

- **Presto! Mr. Photo** for image cataloging, viewing and automatic Web page creation (HTML output).⁽¹⁾⁽²⁾
- **Presto! PhotoAlbum** for decorating photos with various templates.⁽¹⁾⁽²⁾
- **Presto! ImageFolio** for pro-style retouching with multi-layer mask support, custom layouts, and advanced special effects.⁽¹⁾

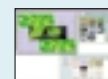
⁽¹⁾ Compatible with Windows®

NT/95/98/2000/Professional.

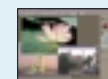
⁽²⁾ Compatible with Mac OS 7.5 or later.



Presto! Mr. Photo



Presto! PhotoAlbum



Presto! ImageFolio



HIGH RESOLUTION SUPER VHS VCR S

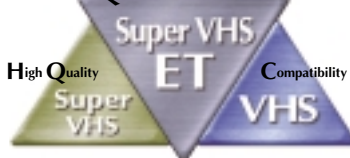
HR-S9800

SVHS Super VHS ET **Hi-Fi STEREO** **VCR Plus+ Easy TopUp**
DYNAMIC DRUM SYSTEM



- Super VHS High Resolution ■ Super VHS ET Recording ■ Hi-Fi VHS Stereo with MTS Decoder ■ TimeScan and Pro-Slow with Dynamic Drum System ■ Video Navigation ■ DigiPure Technology with 4MB Frame Memory [• Digital Wide TBC • Precision 3-D Color Circuit • Digital 3-D YNR/CNR • Precise Digital 3-D Y/C Separation • Digital R³ Picture System] ■ Multi-Brand TV/Cable/DBS Compatible Remote with Jog/Shuttle ■ Ghost Reduction Tuner ■ VCR Plus+ with Cable Box Control ■ Jog/Shuttle on VCR ■ Insert Editing with Flying Erase Head and Audio Dubbing ■ Plug & Play ■ Rec Link ■ Active Video Calibration ■ Picture Control ■ J-Terminal for use in a computer controlled system ■ 17-1/4" (W) x 3-7/8" (H) x 13-11/16" (D)

Quality & Economy



S-VHS QUALITY ON VHS TAPE

HR-S7800

SVHS Super VHS ET **VCR Plus+ Easy TopUp**



- Super VHS High Resolution ■ Super VHS ET Recording ■ Hi-Fi VHS Stereo with MTS Decoder ■ DigiPure Technology with 2MB Frame Memory [• Digital Wide TBC • Precision 3-D Color Circuit • Digital 3-D YNR/CNR • Precise Digital 3-D Y/C Separation • Digital R³ Picture System] ■ VCR Plus+ with Cable Box Control ■ Insert Editing with Flying Erase Head and Audio Dubbing ■ Plug & Play ■ Active Video Calibration ■ Picture Control ■ Multi-Brand TV/Cable/DBS Compatible Remote with Glow-Keys ■ Child Lock ■ Gold-Plated Front AV Inputs ■ AV Compu Link ■ Shuttle Plus ■ 15-3/4" (W) x 3-3/4" (H) x 11-1/8" (D)

HR-S5900

SVHS Super VHS ET **VCR Plus+ Easy TopUp**



- Super VHS High Resolution ■ Super VHS ET Recording ■ Hi-Fi VHS Stereo with MTS Decoder ■ VCR Plus+ (Cable Box Controller ready) ■ Insert Editing with Flying Erase Head and Audio Dubbing ■ Advanced Jog Dial on VCR ■ Plug & Play ■ Active Video Calibration ■ Picture Control ■ Multi-Brand TV/Cable/DBS Compatible Remote with Glow-Keys ■ Child Lock ■ Rec Link ■ AV Compu Link ■ Shuttle Plus ■ Express Programming ■ Auto SP→EP Timer Recording ■ 15-3/4" (W) x 3-3/4" (H) x 11-3/16" (D)

HR-S3910/S3900

SVHS Super VHS ET **Hi-Fi STEREO** **VCR Plus+ Easy TopUp**



- Super VHS High Resolution ■ Super VHS ET Recording ■ Hi-Fi VHS Stereo with MTS Decoder ■ VCR Plus+ (Cable Box Controller ready) ■ Advanced Jog Dial on VCR ■ Plug & Play ■ Active Video Calibration ■ Picture Control ■ Multi-Brand TV/Cable/DBS Compatible Remote with Glow-Keys ■ Child Lock ■ Rec Link ■ AV Compu Link ■ Shuttle Plus ■ Express Programming ■ Auto SP→EP Timer Recording ■ 15-3/4" (W) x 3-3/4" (H) x 11-3/16" (D)

DVD PLAYERS — NEW WAVE IN HOME ENTERTAINMENT



xv-SA75GD



- Compatible with DVD Audio, DVD Video and CD, CD-R/RW and MP3 (on CD-R/RW) ■ 1-bit P.E.M. D.D. Converter compatible with 192kHz/24-bit DVD Audio format ■ Built-in Dolby Digital/DTS decoders ■ Digital Direct Progressive Scan output ■ High-bit/High-sampling 10-bit/54MHz video D/A converter ■ Component video, S-video and composite video outputs ■ Optical and coaxial digital outputs ■ GUI (Graphical User Interface) through On-Screen Display (OSD) for easy operation ■ 5.1-channel analog output ■ A/V COMPU LINK ■ 17-3/16" (W) x 2-7/8" (H) x 10-9/16" (D)

xv-S65GD



- Digital Direct Progressive Scan output ■ High-bit/High-sampling 10-bit/54MHz video D/A converter ■ VFP (Video Fine Processor) for fine picture adjustment ■ Component video, S-video and composite video outputs ■ Optical and coaxial digital output for PCM, Dolby Digital and DTS ■ GUI (Graphical User Interface) through On-Screen Display (OSD) for easy operation ■ Compatible with DVD Video, CD, CD-R/RW and MP3 (on CD-R/RW) ■ A/V COMPU LINK ■ 17-3/16" (W) x 2-11/16" (H) x 10-9/16" (D)



xv-S45GD



- High-bit/High-sampling 10-bit/27MHz video D/A converter ■ Component video, S-video and composite video outputs ■ Theater position for picture adjustment ■ 1-bit P.E.M. D.D. Converter with 96kHz/24-bit audio resolution ■ Optical and coaxial digital output for PCM, Dolby Digital and DTS ■ Compatible with DVD Video, CD and CD-R/RW ■ A/V COMPU LINK ■ 17-3/16" (W) x 2-11/16" (H) x 10-9/16" (D)



xv-M50BK



- Triple-Tray DVD video/CD changer ■ High-bit/High-sampling 10-bit/27MHz video D/A converter ■ Component video, S-video and composite video outputs ■ Theater position for picture adjustment ■ 1-bit P.E.M. D.D. Converter with 96kHz/24-bit audio resolution ■ Optical and coaxial digital output for PCM, Dolby Digital and DTS ■ Compatible with DVD Video, CD and CD-R/RW ■ A/V COMPU LINK ■ 17-3/16" (W) x 5" (H) x 13" (D)



xv-D723GD



- Compatible with DVD Audio, DVD Video and CD ■ 1-bit P.E.M. D.D. Converter for 192kHz/24-bit DVD Audio format ■ Built-in Dolby Digital/DTS decoders ■ Progressive Scan output ■ High-bit/High-sampling 10-bit/54MHz video D/A converter ■ VFP (Video Fine Processor) for fine picture adjustment ■ Component video, S-video and composite video outputs ■ Optical and coaxial digital outputs ■ GUI (Graphical User Interface) through On-Screen Display (OSD) for easy operation ■ 5.1-channel analog output ■ A/V COMPU LINK ■ 17-3/16" (W) x 4-7/16" (H) x 12-13/16" (D)



HM-HDS1

SVHS Super VHS ET **Hi-Fi** STEREO **VCR Plus+** Easy Setup

- Hard Disk Recorder with 40 GB Capacity [• SP Mode (6Mbps): approx.12 hrs. • LP Mode (4Mbps): approx.20 hrs. • EP Mode (3Mbps): approx.30 hrs. • SEP Mode (2Mbps): approx.40 hrs.] ■ High Resolution Super VHS [• DigiPure Technology including Digital Wide TBC and 4 MB Frame Memory • Super VHS ET Recording]
- Non-Linear Random Assemble Editing (HDD→S-VHS/VHS)
- "Live Memory" for controlled viewing of live TV (HDD) ■ Simultaneous Recording and Playback (HDD) ■ 1.5x Speed Playback with Sound (HDD)
- Program Dubbing for easy transfer and archiving (HDD→S-VHS/VHS)
- Index Picture Navigation (HDD & S-VHS/VHS)
- 17-3/16" (W) x 4-15/16" (H) x 15-3/16" (D)



HR-DVS2

Mini **DV** NTSC **SVHS** Super VHS ET **Hi-Fi** STEREO **VCR Plus+** Easy Setup

- DV Digital Format with PCM Digital Audio ■ High Resolution Super VHS [• DigiPure Technology including Digital Wide TBC and 4 MB Frame Memory • Super VHS ET Recording] ■ Hi-Fi VHS Stereo with MTS Decoder
- Easy PC Connectivity and NLE Compatibility ■ 64-Segment (8 programs x 8 sets) Random Assemble Editing (DV→VHS) ■ One-Touch Dubbing (both ways) ■ DV Insert Editing and Audio Dubbing (32 kHz mode)
- S-VHS/VHS Insert Editing with Flying Erase Head/Audio Dubbing
- Multi-Brand TV/Cable/DBS Compatible Remote ■ DV Input/Output (i.Link, IEEE1394) ■ 17-3/16" (W) x 4-15/16" (H) x 15-7/16" (D)



D-VHS RECORDER - THE NEW EVOLUTION IN VIDEO

HM-DSR100DU

DVHS **Hi-Fi** STEREO

- MPEG2 Digital Bit Stream Recording of DISH Network™ Broadcasts with D-VHS ■ Built-in DISH Network™ DBS Tuner and VHF/UHF Tuner ■ Easy Timer Programming with DISH Network™ On-Screen Program Guide ■ Conventional VHS Recording and Playback
- UHF/Infrared Universal Remote ■ Hi-Fi VHS Stereo with MTS Decoder ■ High Performance 8-Head System ■ Program Browse for channel surfing while watching current program ■ Playback Browse/FF Browse/REW Browse to view information on program being currently played back or fast-forwarded/rewind ■ Optical Digital Output for Dolby Digital (AC-3) ■ V-Chip for parental control
- 18-inch Satellite Dish Antenna with Dual LNBF provided ■ 15-3/4" (W) x 5-5/8" (H) x 13-13/16" (D)



USER-FRIENDLY HIGH PERFORMANCE



HR-VP790

VHS **Hi-Fi** STEREO **VCR Plus+** Easy Setup **SQPB**

- Hi-Fi VHS Stereo with MTS Decoder ■ VCR Plus+ (Cable Box Controller ready)
- Advanced Jog Dial on VCR ■ Plug & Play ■ SQPB (S-VHS Quasi Playback)
- Auto Picture ■ Picture Control ■ Multi-Brand TV/Cable/DBS Compatible Remote with Glow-Keys ■ Rec Link ■ AV Compu Link ■ Shuttle Plus ■ Express Programming
- Auto SP→EP Timer Recording ■ 15-3/4" (W) x 3-3/4" (H) x 10-1/16" (D)

HR-VP690/VP59

VHS **Hi-Fi** STEREO **VCR Plus+** Easy Setup **SQPB**

HR-FS1

VHS **Hi-Fi** STEREO **VCR Plus+** Easy Setup **SQPB**

- Hi-Fi VHS Stereo with MTS Decoder
- VCR Plus+ Instant Timer Programming
- Plug & Play ■ SQPB (S-VHS Quasi Playback) ■ Picture Control
- Multi-Brand TV/Cable/DBS Compatible Remote with Glow-Keys ■ Shuttle Plus
- Express Programming ■ Auto SP→EP Timer Recording ■ Pro-cision 19μ Heads
- Color LCD Mode Indicator
- 3-15/16" (W) x 10-7/8" (H) x 10-7/8" (D)



- Hi-Fi VHS Stereo with MTS Decoder ■ VCR Plus+ Instant Timer Programming ■ Plug & Play ■ SQPB (S-VHS Quasi Playback) ■ Auto Picture ■ Picture Control ■ Multi-Brand TV/Cable/DBS Compatible Remote ■ Shuttle Plus ■ Express Programming ■ Auto SP→EP Timer Recording ■ Pro-cision 19μ Heads ■ 15-3/4" (W) x 3-3/4" (H) x 9-7/8" (D)



UXGA 1.92 Megapixel Digital Still Progressive 1000

DIGITAL DualCam SD MultiMediaCard

USB Terminal 3.5"



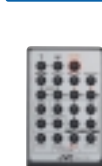
GR-DV2000

High-Band Digital Camcorder

- High Quality Picture and Sound with DV Format and PCM Digital Audio
- 680,000-Pixel Progressive Scan CCD
- 520-line Horizontal and 480-line Vertical Resolution with High-Band Processor
- UXGA Mode 1.92-megapixel Digital Still Camera
- SD Memory Card/MultiMediaCard Compatibility
- USB High-Speed Interface
- DV Input/Output Terminal (i.Link, IEEE 1394 compliant)
- High-Resolution 3.5" Polycrystalline-Silicon LCD Color Monitor
- Video and Digital Still Dual Shooting Mode
- Analog Input
- 300x Super Digital Zoom with Spline Interpolation
- High-Resolution Color Viewfinder
- Picture Stabilizer
- Digital Effects and Scene Transitions
- Snapshot Mode
- Info-Shoe for exclusive accessory attachment
- SLR-type operation with Real-Touch Manual Focus Ring
- High-Value Software Package Provided*
- 2-15/16" (W) x 3-9/16" (H) x 7-1/16" (D)

*For Windows and Macintosh

DIGITAL DualCam NightAlive 2.5"



GR-DVM55

GR-DVM75
SD MultiMediaCard
USB Terminal VIDEO CLIP

GR-DVM75/DVM55

High-Band Digital Camcorder

- High Quality Picture and Sound with DV Format and PCM Digital Audio
- 520 Lines of Resolution with High-Band Processor
- 680,000-Pixel High-Resolution CCD
- NightAlive for extreme low-light shooting
- XGA Digital Still Camera Built-in with SD Memory Card/MultiMediaCard Compatibility (8MB MultiMediaCard Provided) (DVM75)
- HG Snapshot (Full-Frame Digital Stills) (DVM75)
- MPEG4 Email Video Clips (DVM75)
- Digital Sound Effects (MP3) (DVM75)
- USB High-Speed Interface (DVM75)
- Analog Input (DVM75)
- DV Input/Output Terminal (i.Link, IEEE 1394 compliant)
- High-Resolution 2.5" Amorphous Silicon LCD Color Monitor
- 200x Super Digital Zoom with Spline Interpolation
- High-Resolution Color Viewfinder
- Picture Stabilizer
- Digital Effects and Scene Transitions
- High-Value Software Package Provided*
- 3-7/8" (W) x 4-3/4" (H) x 2-1/16" (D)

*For Windows and Macintosh (DVM75)/For Windows (DVM55)

GR-DVM90/DVM80

Digital Video Camera

Progressive 1000
2.5"

GR-DVM90
DIGITAL DualCam VIDEO CLIP
SD MultiMediaCard



GR-DVM80

- High Quality Picture and Sound with DV Format and PCM Digital Audio
- 680,000-Pixel Progressive Scan CCD
- 520-line Horizontal and 480-line Vertical Resolution with High-Band Processor
- Digital sound effects (MP3) (DVM90)
- Email Video Clips (DVM90)
- XGA Digital Still Camera Built-in with SD Memory Card/MultiMediaCard Compatibility (8MB MultiMediaCard Provided) (DVM90)
- Video and Digital Still Dual Shooting Mode (DVM90)
- Pro Snapshots (DVM90)
- DV Input/Output Terminal (i.LINK: IEEE 1394 compliant)
- High-Resolution 2.5" Color Amorphous Silicon LCD Monitor
- 200x Super Digital Zoom with Spline Interpolation
- Direct PC Connection (9-pin standard serial port) for still image capture and J-LIP control
- Digital Special Effects/Wipes/Fades and Pinpoint Zoom during playback
- R.A. Edit with retroactive selection of digital effects and scene transitions
- High-Value Software Package Provided*
- 2-1/16" (W) x 4-15/16" (H) x 3-7/8" (D)

*For Windows

GR-DVP3

High-Band Digital Camcorder

NightAlive microPocket DV
SD MultiMediaCard
USB Terminal VIDEO CLIP
2"



- Ultra compact, Sleek Flat-Surface Design
- High Quality Picture and Sound with DV Format and PCM Digital Audio
- 520 Lines of Resolution with High-Band Processor
- 680,000-Pixel High-Resolution CCD
- NightAlive for extreme low-light shooting
- XGA Digital Still Camera Built-in with SD Memory Card/MultiMediaCard Compatibility (8MB SD Memory Card Provided)
- HG Snapshot
- MPEG4 Email Video Clips
- Digital Sound Effects (MP3)
- USB High-Speed Interface
- DV Input/Output Terminal (i.Link, IEEE 1394 compliant)
- High-Resolution 2" Polycrystalline-Silicon LCD Color Monitor
- 200x Super Digital Zoom with Spline Interpolation
- High-Resolution Color Viewfinder
- Info-Shoe for exclusive accessory attachment
- High-Value Software Package Provided*
- 1-3/4" (W) x 4-9/16" (H) x 3-3/16" (D)

*For Windows and Macintosh

GR-DVL915/DVL815

High-Band Digital Camcorder

NightAlive DIGITAL DualCam SD MultiMediaCard USB Terminal

GR-DVL915
3.5"



GR-DVL815
3"

- High quality picture and sound with DV format and PCM digital audio
- 520 lines of resolution with High-Band Processor
- 680,000-Pixel High-resolution CCD
- NightAlive for extreme low-light shooting
- Digital Still Camera Built-in with SD Memory Card/MultiMediaCard compatibility (16 MB MultiMediaCard provided)
- USB High-Speed Interface
- DV Input/Output (i.Link, IEEE 1394 compliant)
- Analog Input (DVL915)
- High-resolution 3.5" (DVL915)/3" (DVL815) Amorphous Silicon TFT LCD Color Monitor
- 400x Super Digital Zoom with Spline Interpolation
- High-resolution Color Viewfinder
- High-Value Software Package provided*
- Picture Stabilizer
- Digital Special Effects/Wipes/Fades and Pinpoint Zoom during playback
- R.A. Edit with retroactive selection of digital effects and scene transitions
- Built-in Auto Light
- Snapshot with Shutter Sound
- 3-5/16" (W) x 3-7/8" (H) x 7-7/16" (D)

*For Windows and Macintosh

GR-DVL510/DVL310

High-Band Digital Camcorder

NightAlive 2.5"

GR-DVL510
DIGITAL DualCam SD MultiMediaCard USB Terminal



GR-DVL310

- High quality picture and sound with DV format and PCM digital audio
- 520 lines of resolution with High-Band Processor
- 680,000-Pixel High-resolution CCD
- NightAlive for extreme low-light shooting
- Digital Still Camera Built-in with SD Memory Card/MultiMediaCard compatibility (8 MB MultiMediaCard provided)
- USB High-Speed Interface (DVL510)
- DV Input/Output (i.Link, IEEE 1394 compliant)
- High-resolution 2.5" Amorphous Silicon TFT LCD Color Monitor
- 400x Super Digital Zoom with Spline Interpolation
- High-Value Software Package provided*
- Picture Stabilizer
- Digital Special Effects/Wipes/Fades and Pinpoint Zoom during playback
- R.A. Edit with retroactive selection of digital effects and scene transitions
- Built-in Auto Light
- Snapshot with Shutter Sound
- 3-5/16" (W) x 3-7/8" (H) x 7-7/16" (D)

*For Windows and Macintosh (DVL510)/For Windows (DVL310)

CAMCORDER FEATURE CHECKLIST

FEATURE	MODEL	GR-DV2000	GR-DVM90	GR-DJM80	GR-DVM75	GR-DVM55	GR-DVP3	GR-DVL915	GR-DVL815	GR-DVL510	GR-DVL310	GR-SXM930	GR-SXM730	GR-SXM330	GR-AMM230	GR-SX960	GR-AX760
Format		DV	DV	DV	DV	DV	DV	DV	DV	DV	Super VHS	Super VHS	Super VHS	VHS	Super VHS	VHS	
4:1:1 Digital Component		●	●	●	●	●	●	●	●	●	●	●	●	●	●	●	●
Super High-Band Processor		●	●	●	●	●	●	●	●	●	●	●	●	●	●	●	●
PCM Digital Stereo		●	●	●	●	●	●	●	●	●	●	●	●	●	●	●	●
* Digital Still Camera		●	●	●	●	●	●	●	●	●	●	●	●	●	●	●	●
* MultiMediaCard/SD Memory Card Compatibility		●	●	●	●	●	●	●	●	●	●	●	●	●	●	●	●
* USB Terminal		●	●	●	●	●	●	●	●	●	●	●	●	●	●	●	●
Analog Input		●	●	●	●	●	●	●	●	●	●	●	●	●	●	●	●
* DV In/ Out Terminal		●	●	●	●	●	●	●	●	●	●	●	●	●	●	●	●
PC Terminal (RS-232C)		●	●	●	●	●	●	●	●	●	●	●	●	●	●	●	●
* Digital Effects Playback		●	●	●	●	●	●	●	●	●	●	●	●	●	●	●	●
Dual Shooting Mode		●	●	●	●	●	●	●	●	●	●	●	●	●	●	●	●
* MP3 Digital Sound Playback		●	●	●	●	●	●	●	●	●	●	●	●	●	●	●	●
Email Video Clip		●	●	●	●	●	●	●	●	●	●	●	●	●	●	●	●
NightAlive		●	●	●	●	●	●	●	●	●	●	●	●	●	●	●	●
* Color Viewfinder		●	●	●	●	●	●	●	●	●	●	●	●	●	●	●	●
* LCD Swing Monitor		●	●	●	●	●	●	●	●	●	●	●	●	●	●	●	●
* Pro-cision 5 Head System		●	●	●	●	●	●	●	●	●	●	●	●	●	●	●	●
Lens Brightness		F1.8	F1.8	F1.8	F1.8	F1.8	F1.8	F1.8	F1.8	F1.8	F1.6	F1.6	F1.6	F1.6	F1.6	F1.6	F1.6
No. of Pixels in CCD		680Kc	680Kc	680Kc	680Kc	680Kc	680Kc	680Kc	680Kc	680Kc	270K	270K	270K	270K	270K	270K	270K
* Super LoLux		●	●	●	●	●	●	●	●	●	●	●	●	●	●	●	●
Optical Zoom Ratio		10:1	10:1	10:1	10:1	10:1	10:1	10:1	10:1	10:1	16:1	16:1	16:1	16:1	16:1	16:1	16:1
* Digital Hyper Zoom		300:1/40:1	200:1/40:1	200:1/40:1	200:1/40:1	200:1/40:1	200:1/40:1	400:1/40:1	400:1/40:1	400:1/40:1	400:1/50:1	400:1/50:1	400:1/50:1	400:1/50:1	400:1/50:1	400:1/50:1	400:1/50:1
* Picture Stabilizer		●	●	●	●	●	●	●	●	●	●	●	●	●	●	●	●
* Built-in Auto Light		●	●	●	●	●	●	●	●	●	●	●	●	●	●	●	●
* Digital TBC and CNR		●	●	●	●	●	●	●	●	●	●	●	●	●	●	●	●
* Snapshot Mode		● d/f	● d/f	● d/f	● d/f	● f	● e/f	● f	● f	● f	● f	● f	● f	● f	● f	● f	● f
* Digital Special Effects		●	●	●	●	●	●	●	●	●	●	●	●	●	●	●	●
* Digital Wipes/ Fades		●	●	●	●	●	●	●	●	●	● g/h	● g/h	● g/h	● g/h	● g/h	● g/h	● g/h
Slow Shutter Mode		●	●	●	●	●	●	●	●	●	●	●	●	●	●	●	●
Full Range AF with Auto Macro		●	●	●	●	●	●	●	●	●	●	●	●	●	●	●	●
* Internal Battery Charger		●	●	●	●	●	●	●	●	●	●	●	●	●	●	●	●
* Instant Titles		●	●	●	●	●	●	●	●	●	●	●	●	●	●	●	●
Tele-Macro		●	●	●	●	●	●	●	●	●	●	●	●	●	●	●	●
5-Sec.Rec.		●	●	●	●	●	●	●	●	●	●	●	●	●	●	●	●
Random Assemble Editing		● i	● i	● i	● i	● i	● i	● i	● i	● i	●	●	●	●	●	●	●
Wide Mode		●	●	●	●	●	●	●	●	●	●	●	●	●	●	●	●
16:9 Squeeze Mode		●	●	●	●	●	●	●	●	●	●	●	●	●	●	●	●
* Animation/ Timelapse		● /-	● /-	● /-	● /-	● /-	● /-	● /-	● /-	● /-	● /-	● /-	● /-	● /-	● /-	● /-	● /-
Self-Timer		●	●	●	●	●	●	●	●	●	●	●	●	●	●	●	●
Max. Shutter Speed (sec.)		1/4000	1/4000	1/4000	1/4000	1/4000	1/4000	1/4000	1/4000	1/4000	1/2000	1/2000	1/2000	1/2000	1/2000	1/2000	1/2000
Retake & Quick Review		●	●	●	●	●	●	●	●	●	●	●	●	●	●	●	●
Mic Input		●	●	●	●	●	●	●	●	●	●	●	●	●	●	●	●
Manual Focus		●	●	●	●	●	●	●	●	●	●	●	●	●	●	●	●
Manual Exposure Control		●	●	●	●	●	●	●	●	●	●	●	●	●	●	●	●
Iris Lock		●	●	●	●	●	●	●	●	●	●	●	●	●	●	●	●
Date/ Time Display		●	●	●	●	●	●	●	●	●	● j	● j	● j	● j	● j	● j	● j
Audio Dubbing/ Insert Editing		●	●	●	●	●	●	●	●	●	● k	●	●	●	●	●	●
HQ Circuitry		●	●	●	●	●	●	●	●	●	●	●	●	●	●	●	●
Provided Remote Control		● l	● l	● l	● l	● l	● l	● l	● l	● l	●	●	●	●	●	●	●
J-Terminal		●	●	●	●	●	●	●	●	●	●	●	●	●	●	●	●

- = Yes
 (a) MPEG4 Email video clip; (b) Polycrystalline Silicon TFT active matrix monitor; (c) Progressive Scan CCD; (d) Pro snapshot;
 (e) HG snapshot; (f) Equipped with Motor Drive Mode; (g) Wipe by black screen only; (h) Black and Mosaic Fader only;
 (i) With digital effect/scene transition selection (j) With Auto Date; (k) Audio Dubbing only (l) Multi Brand Remote

VCR FEATURE CHECKLIST

FEATURE	MODEL	HR-S9800	HR-S7800	HR-S5900	HR-S3910	HR-S3900	HR-VP790	HR-VP690	HR-VP59	HR-FS1
Head Configuration		DA-4 + HiFi	DA-4 + HiFi	DA-4 + HiFi	DA-4 + HiFi	DA-4 + HiFi	DA-4 + HiFi	DA-4 + HiFi	DA-4 + HiFi	DA-4 + HiFi
* Hi-Fi Stereo/ MTS Decoder		●	●	●	●	●	●	●	●	●
* Super VHS/ Super VHS ET		●	●	●	●	●	●	●	●	●
* Pro-cision 19u Heads		●	●	●	●	●	●	●	●	●
* TimeScan and Pro-Slow		●	●	●	●	●	●	●	●	●
* Video Navigation		●	●	●	●	●	●	●	●	●
* VCR Plus+ with Cable Box Control		●	● a	● a	● a	● a	● b	● b	● b	● b
* Active Video Calibration		●	●	●	●	●	●	●	●	●
* Auto Picture		●	●	●	●	●	●	●	●	●
* Plug & Play		●	●	●	●	●	●	●	●	●
* Picture Control		●	●	●	●	●	●	●	●	●
* Flying Erase Head/ Insert Editing		●	●	●	●	●	●	●	●	●
* Shuttle Plus		●	●	●	●	●	●	●	●	●
* Jog/ Shuttle on VCR		● c	●	●	●	●	●	●	●	●
* Advanced Jog Dial on VCR		●	● d	● d	● d	● d	●	●	●	●
* Auto SP→EP Timer Recording		●	●	●	●	●	●	●	●	●
* Express Programming		●	●	●	●	●	●	●	●	●
* Audio Dubbing		●	●	●	●	●	●	●	●	●
* Multi-Brand Remote (TV/ Cable Box/ DBS Box) (with Glow Keys)		●	●	●	●	●	●	●	●	●
* Gold-Plated Front AV Inputs		●	●	Silver	Silver	Silver	Silver	Silver	Silver	Silver
* Child Lock		●	●	●	●	●	●	●	●	●
Multilingual Color On-Screen Menu		●	●	●	●	●	●	●	●	●
Instant Review		●	●	●	●	●	●	●	●	●
* AV Compu Link		●	●	●	●	●	●	●	●	●
Auto Index		●	●	●	●	●	●	●	●	●
Tape Position Indicator		●	●	●	●	●	●	●	●	●
* SQPB		●	●	●	●	●	●	●	●	●
Recording Resume		●	●	●	●	●	●	●	●	●
Auto Daylight Saving Time		●	●	●	●	●	●	●	●	●
HQ Circuitry		●	●	●	●	●	●	●	●	●
181-Channel Tuner		●	●	●	●	●	●	●	●	●
1-Year/ 8-Event Timer		●	●	●	●	●	●	●	●	●
Digital (AV) Tracking		●	●	●	●	●	●	●	●	●
Multi-Speed Search		●	●	●	●	●	●	●	●	●
Slow Motion		●	●	●	●	●	●	●	●	●
Realtime Tape Counter		●	●	●	●	● e	● e	● e	● e	● e
Skip Search		●	●	●	●	●	●	●	●	●
Timer Overlap Warning		●	●	●	●	●	●	●	●	●
Head Cleaning Warning		●	●	●	●	●	●	●	●	●
Repeat Playback		●	●	●	●	●	●	●	●	●
Rec Link		●	●	●	●	●	●	●	●	●
Surge Protection Circuitry		●	●	●	●	●	●	●	●	●
J-Terminal		●	●	●	●	●	●	●	●	●

- = Yes
 (a) Cable Box Control Ready; (b) Without Cable Box Control; (c) Pro-Touch;
 (d) With 24 Hr. Quick Programming function; (e) On-screen display only

More information on features marked with "★" can be found inside this brochure.



JLIP (Joint Level Interface Protocol) is the common communication protocol shared by JVC CyberCam, certain VCRs and camcorders, which enables computer controlled video-to-video editing and digital still image capture.



E. & O. E. Design and specifications subject to change without notice. Certain accessories may not be available in certain areas. VCR Plus+C³ and PlusCode are trademarks of Gemstar Development Corporation. The VCR Plus+ system is manufactured under license from Gemstar Development Corporation. DSS™ is an official trademark of DIRECTV, Inc., a unit of GM Hughes Electronics. DISH Network™ is a trademark of Echostar Communications Corporation. All photographs and screenshots in this catalog are simulated. All brand names and product names are trademarks, or trade names of their respective holders. Microsoft® and Windows® are either registered trademarks or trademarks of Microsoft Corporation in the United States and/or other countries. It may be unlawful to record or play back copyrighted material without the consent of the copyright owner. Copyright© 2001, Victor Company of Japan, Limited (JVC). All Rights Reserved.

JVC Home Page <http://www.jvc.com/>

