

JVC®

HI-FI COMPONENTS 2000

2000

We Bring the Music to You

**KYL
EASTWOOD**

at the 1999 JVC International Jazz Fest

JVC

TX-9000V AUDIO/VIDEO CENTER RECEIVER

STANDBY

POWER

COMPU LINK

STEREO ON/OFF

COMP. LOW

SEARCH

SEARCH

SEARCH

SEARCH

SEARCH

SEARCH

SEARCH

SEARCH

SEARCH

SEARCH

SEARCH

SEARCH

SEARCH

SEARCH

SEARCH

SEARCH

SEARCH

SEARCH

SEARCH

SEARCH

SEARCH

SEARCH

DVD DIGITAL

SEARCH

SEARCH

SEARCH

SEARCH

SEARCH

Hi-Fi components

Into the New Millennium of
Home Theater and Multimedia
Home Entertainment—JVC



AUDIO/VIDEO CONTROL RECEIVERS

Built-in Dolby Digital/DTS decoders

(RX-9000VBK/RX-8000VBK/
RX-7000VBK/RX-6500VBK/
RX-6000VBK)

Imagine an entire movie contained on a disc the size of a CD. That's DVD. What's more, DVD is compatible with discrete 5.1-channel digital audio.

JVC receivers are compatible with Dolby Digital and DTS 5.1-channel sound. These theater sound systems, with five full-range channels and a subwoofer channel, let you enjoy the most spectacular theater sound at home when you view movies on DVD.

Dolby Digital is one of the most advanced home theater sound systems available—a popular standard for DVD and HDTV (High-Definition TV). And DTS Digital Surround is the latest digital movie soundtrack format that delivers 5.1-channel audio like Dolby Digital—an option for DVD. Using a low audio-data compression rate and a high transfer bit rate, DTS features natural, solid and clear sound.



Multichannel audio ready with 5.1-channel analog input

(RX-9000VBK/RX-8000VBK/
RX-7000VBK/RX-5000VBK)

The 5.1-channel analog input accepts the analog output from a DVD Audio source; or from a Dolby Digital or DTS decoder. JVC receivers are capable of amplifying all channels except for the subwoofer channel.

Equal high power from all five channels

All JVC home theater receivers feature equal high power for all five channels to let you enjoy discrete 5.1-channel sound to the full. Indeed, equal high power allows high definition and dynamic sound quality whether you play music sources in stereo or movies with multi-channel soundtracks.

New Digital Acoustics Processor (DAP)

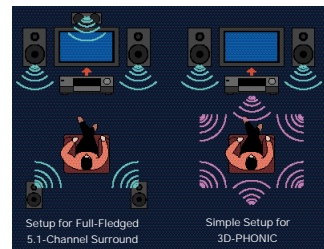
The JVC DAP allows digital recreation of a wide range of halls and spaces in your media room. JVC developed a new sound field simulation technology jointly with one of leading concert hall

designers and contractors.

Capable of handling multi-channel sources, it makes use of a vast amount of data for the creation of sound field patterns that are difficult with conventional processing systems based on field-measured impulse responses. Each sound field pattern is verified and modified repeatedly by critical auditions. The result is that sound fields are reproduced most naturally, with early reflections simulated realistically. With the RX-9000VBK, moreover, the processor is compatible with multi-channel sources such as DTS. It's capable of adding a maximum number of 100 reflections and also adjusting three parameters of effect, liveness and room size.

3D-PHONIC

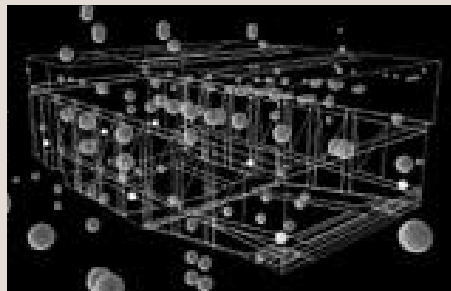
With 3D-PHONIC from JVC, it takes just two front speakers to enjoy 3-dimensional surround sound. Dialog is fixed on the TV screen as a virtual sound source, while the surround signals are mixed with the front signals for playback on the two front speakers.



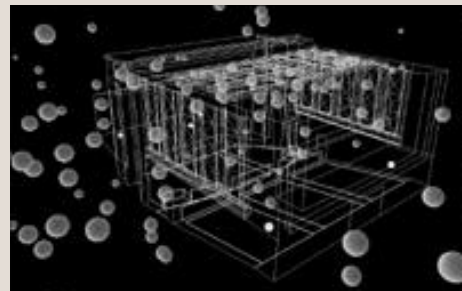
Virtual Sound Source Distribution Graphs

The RX-9000VBK offers six DAP modes, each recreating a multi-channel sound field based on the simulation-synthesized virtual sound source distribution.

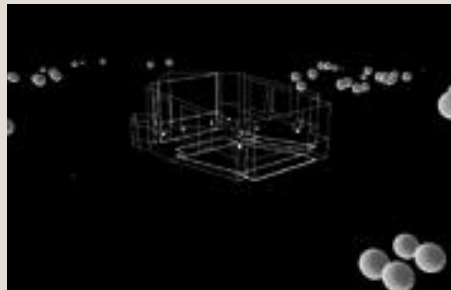
Other receivers create similar DAP modes based on sets of the simulation data like these.



LARGE THEATER



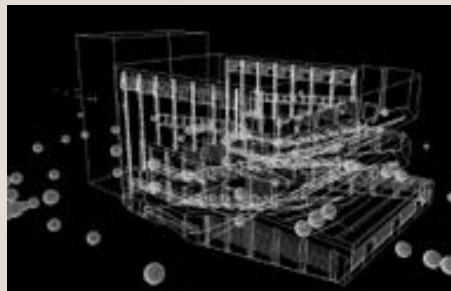
SMALL THEATER



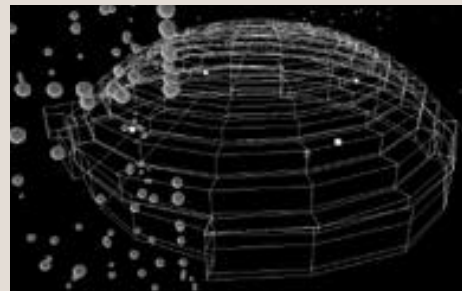
LIVE CLUB



DANCE CLUB



CONCERT HALL



CONCERT ARENA

AUDIO/VIDEO CONTROL RECEIVERS

Advanced engineering and high quality parts

- **Dynamic Super-A** (RX-9000VBK/RX-8000VBK): Smooth sound reproduction practically free of switching and crossover distortion—for all five channels with the RX-9000VBK and for main channels with the RX-8000VBK.

- **K2 Interface and 1-bit P.E.M. Converter** (RX-9000VBK): Low distortion and natural sound fields from stereo and 5.1-channel sources.

- **Discrete configuration:** All five power amps of each receiver are built from discrete components for high sound quality from Dolby Digital and DTS sound sources.

- **High-rigidity Z-Chassis** (RX-9000VBK/RX-8000VBK/RX-7000VBK): Zero vibration, zero resonance and zero interference for the highest fidelity.

- **Separate power supply for digital circuitry** (RX-9000VBK): The digital circuitry and power supply are separate from the analog circuitry, from input to output, so that digital noise does not interfere with the analog circuitry.

- **Oversized EI-core power transformer**

- **Large-capacity audio-type electrolytic capacitors:** Low impedance over a wide frequency range ensures higher sound quality.

- **Large sculptured heat sinks:** Allow quick dissipation of heat and safe operation at higher power output.

- **High-power bipolar output transistors:** Low-impedance driving is combined with high power. Arranged in a single push-pull configuration, select bipolar transistors feature clarity, low distortion and wide dynamics.



- **High-speed rectifier diodes:** Noise radiation is dramatically reduced that might seriously affect sound quality.



- **Banana-plug speaker terminals:** Low-distortion signal transmission is possible even during high-level reproduction.

Digital inputs with assignable function

(RX-9000VBK/RX-8000VBK/RX-7000VBK/RX-6500VBK/RX-6000VBK)

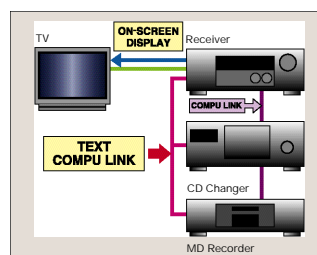
JVC receivers are designed to accept and control a number of digital inputs—one coaxial and three optical sources with the RX-9000VBK, for example. Conveniently, you can assign these inputs to any digital source, including DVD, DBS, CD, CD-R* and MD. Except for the RX-6000VBK, they also feature an optical digital output for direct digital-to-digital dubbing. (*Applicable to the RX-9000VBK and RX-8000VBK only.)

Low-impedance driving capability

Left and right channels for the front are capable of handling a low impedance of 4 ohms. This expands the range of speakers to choose from, including "difficult" speakers. Amazingly, the RX-9000VBK and RX-8000VBK are capable of delivering the same high stereo power—120W—at 8 ohms and 4 ohms, thanks to the high-power output transistors, sophisticated devices and designs.

TEXT COMPU LINK

The more audio/video

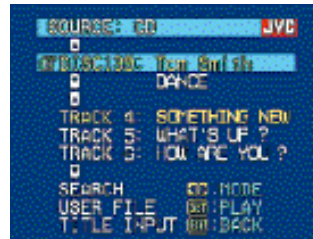


components you own, the more difficult it is to take advantage of their functions. To resolve this problem, JVC first developed COMPU LINK and later AV COMPU LINK. TEXT COMPU LINK is the third step in this progress toward better ease of use. The system is fully compatible with text data carried by media like MD and CD-Text CD, and transmits the data from component to component.

JVC TEXT COMPU LINK shows text data (performer name, disc title and genre) of CD-Text CDs on the receiver's display and also on the screen of your TV. Together with the XL-MC334BK 200-CD mega changer, JVC receivers offer you tremendous convenience.

Title memory: you can give your own titles to CDs through the On-Screen Display (OSD) using the remote of a receiver. So you can even give names to CDs without CD Text.

CD search: using the On-Screen Display, you can search for particular CDs in the changer—by performer, disc title or genre.



CD Track Selection

One Touch Operation and AV COMPU LINK

One Touch Operation means you can make precise sound adjustments—volume level, equalizer response, etc.—source by source, and automatically recall the customized settings each time you choose an input or tune a preset station. The AV COMPU LINK Control System gets your entire audio/video system—TV, VCR and receiver—up and playing, simply by loading a prerecorded tape into your VCR. It works for DVD playback too: just load a disc into a JVC DVD player and press the PLAY button to make all your system ready.

Multi-Color On-screen Display

Imagine the convenience and ease of control you would have if you could operate your audio/video system by choosing options from your television screen. That's exactly what happens with the Multi-Color On-Screen Display featured in the RX-9000VBK, RX-8000VBK and RX-7000VBK. As you operate the remote, menus and submenus appear wherever you position the highlighter: you make your choice or change settings using the remote's cursor keys.

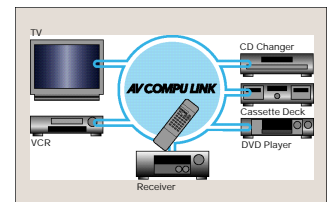
Enhanced COMPU LINK Control System

The Enhanced COMPU LINK Control System lets JVC receivers and other JVC audio components work together even more seamlessly. For instance, when you touch the PLAY button on a JVC CD player or cassette deck (or on the remote control), the source and the receiver are automatically turned on, the input is set for the chosen source on the receiver, and play begins.

* Interactive operation between receivers and sources is available only with models featuring the Enhanced COMPU LINK Control System.

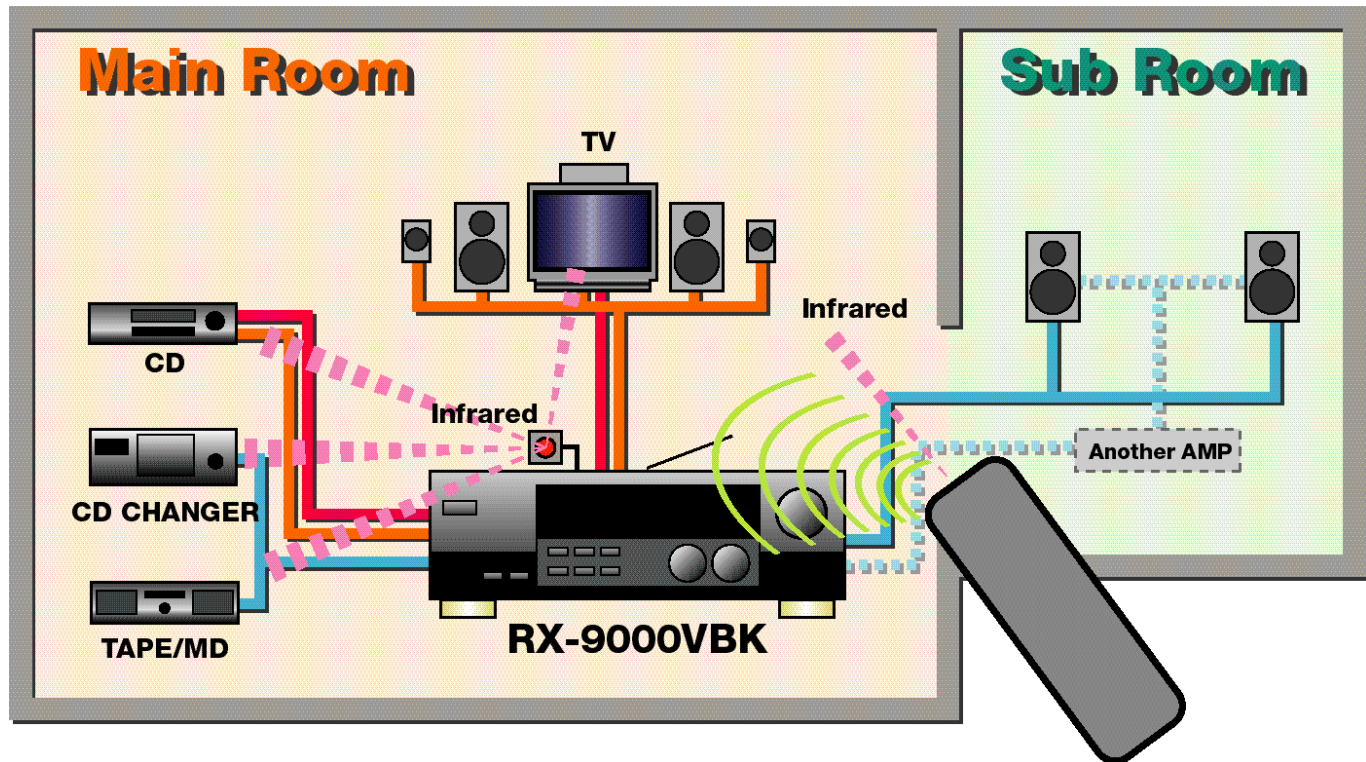
A/V remote control

The remote control for our receivers operates not only the unit itself, but also JVC CD players, DVD players, cassette decks, and JVC video. The one for the RX-9000VBK and RX-8000VBK even gives access to functions of other makers' DVD players. With all JVC receivers except for the RX-6000VBK and RX-5000VBK, a multi-brand remote is standard: you can recall preprogrammed codes to control video equipment from other makers at a touch. The JVC remote even controls the basic functions of your cable box and DBS system.



Multi-room/multi-source capability: Extend audio enjoyment throughout your home

The RX-9000VBK lets you enjoy music anywhere in your home through the audio/video system set up in your living room. Its multi-room/multi-source capability allows two people to enjoy different sources in two rooms—DVD (or CD) in one and an FM rock station in the other, for example—at the same time.



Stereo reproduction in both Main and Sub Rooms: all it takes is an additional pair of speakers

The RX-9000VBK can supply two sets of stereo signals simultaneously to two sets of speakers in different locations—one set in the Main Room and the other in the Sub Room. To enjoy this advantage, just install the second set of speakers in the Sub Room and make the necessary connections.

Theater surround sound in the Main Room and stereo sound in the Sub Room: add a pair of speakers and an outboard stereo amplifier

Install an outboard amplifier in the Sub Room and connect additional stereo speakers. The arrangement

allows you to enjoy 5.1-channel surround in the Main Room and 2-channel stereo in the Sub Room at the same time.

RF/IR multi-brand remote control for operation from anywhere in your home

The remote control sends out not only IR (infrared) but also RF (radio frequency) signals as coded commands to control the receiver. With the remote in hand, you can operate the RX-9000VBK and other JVC audio/video equipment even when you're not in the same room. The RF receptor is housed inside the receiver: you need not worry if an object obstructs the path of the beam since the RF receptor will still receive the remote signal.



RX-9000VBK

Audio/Video Control Receiver



- Stereo: 120 watts per channel, 8 ohms, 20Hz to 20kHz, with 0.02% THD; 120 watts per channel, 4 ohms, 20Hz to 20kHz, with 0.08% THD; Surround: (Front) 100 watts per channel, 8 ohms, 1kHz, 0.8% THD; (Center) 100 watts, 8 ohms, 1kHz, 0.8% THD; (Rear) 100 watts per channel, 8 ohms, 1kHz, 0.8% THD
- Dolby Digital/DTS decoders built-in
- Compatible with Multichannel audio (5.1-channel analog input and 5 separate amps)
- Wide-range frequency response for DVD Audio and other high-spec audio sources
- Multi-room/multi-source capability
- Multi-Color On-Screen Display
- RF/IR multi-brand A/V-CATV-DBS remote control
- K2 Interface for all 6 channels
- 1-bit P.E.M. D.D. Converter for all 6 channels
- Dynamic Super-A for 5 channels
- Banana-plug speaker terminals for all channels
- High current 4-ohms drive
- High-rigidity Z-Chassis
- Dolby Pro Logic in full digital processing
- 3D-PHONIC (3D Action/3D Digital/3D Theater)
- Digital Acoustics Processor (DAP), with 6 preset sound fields (Large Theater/Small Theater/Live Club/Dance Club/Concert Hall/Concert Arena)
- 3-band electronic S.E.A. equalization with 5 presets and 1 manual setting for each source
- Center/rear tone control
- One Touch Operation
- Dot-matrix fluorescent display
- Subwoofer output
- 5 A/V inputs and 3 audio inputs
- 1 coaxial and 3 optical digital inputs with assignable function (DBS, CD, CD-R, MD, DVD)
- 1 optical digital output
- S-video inputs (4)/outputs (2)
- Video terminals on front (gold-plated)
- TEXT COMPU LINK
- 15 AM and 30 FM station memory with character input for each station
- Enhanced COMPU LINK Control System
- AV COMPU LINK

DVD PLAYERS

XV-D723GD

DVD Audio/Video Player



Audio Features

- New 1-bit P.E.M. D.D. Converter for audio with 192kHz/24-bit and 96kHz/24-bit audio resolutions
- Dolby Digital and DTS decoders
- Optical and coaxial digital outputs
- 5.1-channel analog output

Video Features

- Progressive scan output
- High-bit/high-sampling (10-bit/54MHz) video D/A converter
- VFP (Video Fine Processor) for fine picture adjustment
- Component video, S-video and composite video outputs

Convenience and Versatility

- Compatible with DVD Audio, DVD Video, CD and Video CD
- Multi-brand remote with shuttle dial
- GUI (Graphical User Interface) through On-Screen Display (OSD)
- Resume, Digest, Strobe, Angle List and Zoom functions
- AV COMPU LINK
- Coordinated home theater look

XV-523GD

DVD Video Player



Video Features

- Theater position (1, 2, 3 and OFF)
- High-bit/high-sampling (10-bit/27MHz) video D/A converter
- Component video, S-video and composite video outputs

Audio Features

- Dolby Digital and DTS Digital Outputs
- 1-bit P.E.M. D.D. Converter with 96kHz/24-bit audio resolution
- Optical and coaxial digital outputs
- 3D-PHONIC

Convenience and Versatility

- Compatible with DVD Video, CD, CD-R/RW and Video CD
- Multi-brand remote
- Resume, Digest, Strobe, Angle List and Zoom functions
- AV COMPU LINK
- Shuttle knob
- VCR-matching slim design

RX-8000VBK

Audio/Video Control Receiver



- Stereo: 120 watts per channel, 8 ohms, 20Hz to 20kHz, with 0.02% THD; 120 watts per channel, 4 ohms, 20Hz to 20kHz, with 0.08% THD; Surround: (Front) 100 watts per channel, 8 ohms, 1kHz, 0.8% THD; (Center) 100 watts, 8 ohms, 1kHz, 0.8% THD; (Rear) 100 watts per channel, 8 ohms, 1kHz, 0.8% THD
- Dolby Digital/DTS decoders built-in
- Compatible with Multichannel audio (5.1-channel analog input and 5 separate amps)
- Wide-range frequency response for DVD Audio and other high-spec audio sources
- Multi-Color On-Screen Display
- Multi-brand A/V-CATV-DBS remote control
- Dynamic Super-A
- Banana-plug speaker terminals for all channels
- High current 4-ohms drive
- High-rigidity Z-Chassis
- Dolby Pro Logic in full digital processing
- 3D-PHONIC
- Digital Acoustics Processor (DAP), with 5 preset sound fields (Theater/Hall/Live Club/Pavilion/Dance Club)
- 3-band electronic S.E.A. equalization with 5 presets and 1 manual setting for each source
- Center tone control
- One Touch Operation
- Dot-matrix fluorescent display
- Subwoofer output
- 5 A/V inputs and 3 audio inputs
- 1 coaxial and 3 optical digital inputs with assignable function (DBS, CD, CD-R, MD, DVD)
- 1 optical digital output
- S-video inputs (4)/outputs (2)
- Video terminals on front (gold-plated)
- TEXT COMPU LINK
- 15 AM and 30 FM station memory with character input for each station
- Enhanced COMPU LINK Control System
- AV COMPU LINK

xv-M555BK

Triple-Tray DVD Video Changer



Video Features

- Theater position (1, 2, 3 and OFF)
- High-bit/high-sampling (10-bit/27MHz) video D/A converter
- Component video, S-video and composite video outputs

Audio Features

- DTS Digital Outputs
- 1-bit P.E.M. D.D. Converter with 96kHz/24-bit audio resolution
- Optical digital output
- 3D-PHONIC

Convenience and Versatility

- Compatible with DVD Video, CD and Video CD
- 3-Disc Triple-Tray Changer with Play & Exchange System
- Multi-brand remote
- Picture search/slow-motion play
- Resume, Digest, Strobe, Angle List and Zoom functions
- AV COMPU LINK
- Coordinated home theater look

xv-D701BK

DVD Video Player



Video Features

- High-bit/high-sampling (10-bit/27MHz) video D/A converter
- VFP (Video Fine Processor) for fine picture adjustment
- Component video, S-video and composite video outputs

Audio Features

- Dolby Digital decoder
- 1-bit P.E.M. D.D. Converter with 96kHz/24-bit audio resolution
- 96kHz K2 Interface
- Optical and coaxial digital outputs
- 3D-PHONIC
- 5.1-channel analog output
- Gold-plated terminals

Convenience and Versatility

- Compatible with DVD Video, CD and Video CD
- Multi-brand remote with joystick control
- GUI (Graphical User Interface) through On-Screen Display (OSD)
- Resume, Digest, Strobe, Angle List and Zoom functions
- AV COMPU LINK
- CD Text function
- Coordinated home theater look

RX-7000VBK

Audio/Video Control Receiver



- Stereo: 110 watts per channel, 8 ohms, 20Hz to 20kHz, with 0.06% THD; Surround: (Front) 100 watts per channel, 8 ohms, 1kHz, 0.8% THD; (Center) 100 watts, 8 ohms, 1kHz, 0.8% THD; (Rear) 100 watts per channel, 8 ohms, 1kHz, 0.8% THD
- Dolby Digital/DTS decoders built-in
- Compatible with Multichannel audio (5.1-channel analog input and 5 separate amps)
- Multi-Color On-Screen Display
- Banana-plug speaker terminals for main channels
- 1 coaxial and 2 optical digital inputs with assignable function (DBS, CD, MD, DVD)
- 1 optical digital output
- S-video inputs (3)/outputs (2)
- Multi-brand A/V-CATV-DBS remote control
- High-rigidity Z-Chassis
- Dolby Pro Logic in full digital processing
- 3D-PHONIC
- Digital Acoustics Processor (DAP), with 5 preset sound fields (Theater/Hall/Live Club/Pavilion/Dance Club)
- One Touch Operation
- Dot-matrix fluorescent display
- Subwoofer output
- 3 A/V inputs and 3 audio inputs
- TEXT COMPU LINK
- 15 AM and 30 FM station memory with character input for each station
- Enhanced COMPU LINK Control System
- AV COMPU LINK

RX-6500VBK

Audio/Video Control Receiver



- Stereo: 100 watts per channel, 8 ohms, 40Hz to 20kHz, with 0.8% THD; Surround: (Front) 100 watts per channel, 8 ohms, 1kHz, 0.8% THD; (Center) 100 watts, 8 ohms, 1kHz, 0.8% THD; (Rear) 100 watts per channel, 8 ohms, 1kHz, 0.8% THD
- Dolby Digital/DTS decoders built-in
- Dolby Pro Logic in full digital processing
- 3D-PHONIC
- Digital Acoustics Processor (DAP), with 5 preset sound fields (Theater/Hall/Live Club/Pavilion/Dance Club)
- Banana-plug speaker terminals for main channels
- 1 coaxial and 2 optical digital inputs with assignable function (DBS, CD, MD, DVD)
- 1 optical digital output
- S-video inputs (2)/outputs (2)
- Multi-brand A/V-CATV-DBS remote control
- One Touch Operation
- Dot-matrix fluorescent display
- Subwoofer output
- 3 A/V inputs and 3 audio inputs
- 15 AM and 30 FM station memory
- Enhanced COMPU LINK Control System
- AV COMPU LINK

RX-6000VBK

Audio/Video Control Receiver



- Stereo: 100 watts per channel, 8 ohms, 40Hz to 20kHz, with 0.8% THD; Surround: (Front) 100 watts per channel, 8 ohms, 1kHz, 0.8% THD; (Center) 100 watts, 8 ohms, 1kHz, 0.8% THD; (Rear) 100 watts per channel, 8 ohms, 1kHz, 0.8% THD
- Dolby Digital/DTS decoders built-in
- Dolby Pro Logic in full digital processing
- 3D-PHONIC
- Digital Acoustics Processor (DAP), with 5 preset sound fields (Theater/Hall/Live Club/Pavilion/Dance Club)
- 1 coaxial and 1 optical digital inputs with assignable function (DBS, CD, MD, DVD)
- S-video input/output
- A/V remote control
- Bass and treble tone controls
- One Touch Operation
- Dot-matrix fluorescent display
- Subwoofer output
- 3 A/V inputs and 3 audio inputs
- Bass boost
- 15 AM and 30 FM station memory
- Enhanced COMPU LINK Control System
- AV COMPU LINK

RX-5000VBK

Audio/Video Control Receiver

Dolby Digital Ready



- Stereo: 100 watts per channel, 8 ohms, 40Hz to 20kHz, with 0.8% THD; Surround: (Front) 100 watts per channel, 8 ohms, 1kHz, 0.8% THD; (Center) 100 watts, 8 ohms, 1kHz, 0.8% THD; (Rear) 100 watts per channel, 8 ohms, 1kHz, 0.8% THD
- Compatible with Multichannel audio (5.1-channel analog input and 5 separate amps)
- Dolby Pro Logic in full digital processing
- 3D-PHONIC
- Digital Acoustics Processor (DAP), with 5 preset sound fields (Theater/Hall/Live Club/Pavilion/Dance Club)
- A/V remote control
- Bass and treble tone controls
- One Touch Operation
- Fluorescent display
- Subwoofer output
- 2 A/V inputs and 3 audio inputs
- Bass boost
- 15 AM and 30 FM station memory
- Enhanced COMPU LINK Control System

Combination 3-CD changer and CD/CD-R/CD-RW deck

CD-R and CD-RW (CD Recordable and CD Rewritable, respectively) feature a 16-bit/44.1kHz format that's compatible with CD and PCM. CD-R is a write once format, but CD-RW is erasable for re-recording.

The XL-R5000BK combines two units into a single convenient one—a 3-CD Triple-Tray changer that's compatible with CD-RW and a CD-R/RW recorder that can play CDs as well. The changer is the JVC exclusive with three separate disc trays—the Play & Exchange System—for non-stop audio entertainment.

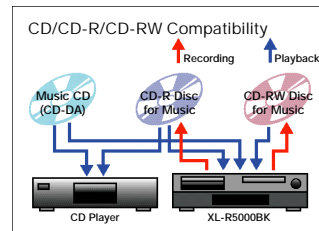
Versatile edit assemble functions

The JVC XL-R5000BK offers its own unique features for recording

convenience. Because it combines a 3-CD/CD-R/CD-RW player with a CD-R/CD-RW recorder, you can assemble and edit tracks from up to three discs to make compilation albums of your own. 2X Synchro Rec allows dubbing at double normal speed. 1-Disc and 1-Track Synchro Rec functions allow one-touch dubbing of an entire disc or a single track.

Versatile inputs and outputs

You can use the XL-R5000BK as a simple mixing/recording console.



You can mix two signals—CD with Line, Line with Mic, and Mic with CD—and adjust individual levels independently. There are also optical digital input and output too. The pitch control allows $\pm 12\%$ (max.) pitch adjustment.

Optimum Power Calibration

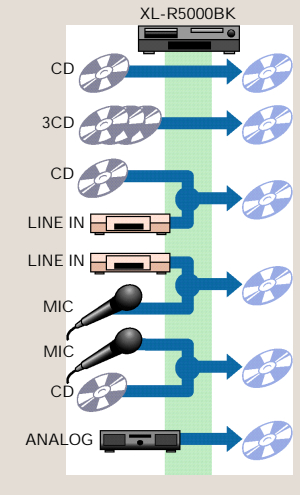
Optimum Power Calibration calibrates (optimizes) the writing laser power for each disc to ensure its playability.

Flexible Recording Options

The XL-R5000BK features the unique convenience of recording and editing. You can not only dub from up to 3 CDs to a CD-R or CD-RW but also mix and record any two of three sources (CD, LINE and MIC).

Flexible Recording Options

The XL-R5000BK features the unique convenience of recording and editing. You can not only dub from up to 3 CDs to a CD-R or CD-RW but also mix and record any two of three sources (CD, LINE and MIC).



XL-R5000BK

CD/CDR Multiple Compact Disc Recorder



CD-to-CD-R/RW Synchro Rec

- 2X high-speed rec
- One-touch rec: 1-disc rec/ 1-track rec
- Edit Rec: Listening (Max. 32 steps), Program (Max. 32 steps)

3-CD Triple-Tray Changer

- 3 independent trays, with Play & Exchange System
- CD-RW compatible
- 1-bit P.E.M. D.D. Converter
- 3-disc smart random play/continuous play
- 3-disc program play
- Pitch control ($\pm 12\%$)

CD-R/RW Recorder

- Mix and record: CD with Line, Line with Mic, Mic with CD
- Sampling rate converter (32kHz/48kHz)
- Auto/manual track marking
- Erase: Last single track/last multiple tracks/all tracks
- Auto rec mute
- Track skip write
- OPC (Optimum Power Calibration) with Running OPC

General

- Programmable timer (Daily Play/Rec, "Once" Play/Rec)
- 20-track program chart

- Mic input
- Line input/output
- Optical digital input/output
- Enhanced COMPULINK Control System
- Remote control

Notes:

1. Recorded CD-R discs cannot be played on an ordinary CD player unless finalized.
2. New recordings may be added on so long as a CD-R disc is not finalized.
3. The XL-R5000BK cannot record on CD-R and CD-RW discs intended for PC applications.
4. At present, CD-RW discs cannot be played on most conventional CD players.

CD players combine ease of use and high sound quality through sophisticated digital engineering. Our 1-bit P.E.M. D.D. Converter features a wide range and musical sound quality, while our 200-CD mega changers are paragons of convenience.

The 1-bit P.E.M. D.D. Converter

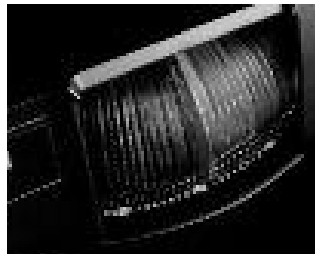
The JVC-exclusive 1-bit P.E.M. D.D. Converter is a high-performance 1-bit DAC, for two reasons. First, the VANS (JVC Advanced Noise Shaper) features the highest order of noise shaping (4th order), allowing the use of a simple low-pass filter to combine superior frequency and phase responses. Second, a pair of P.E.M. DACs improve resolution four-fold, ensuring the high signal-to-noise ratio. The JVC P.E.M. D.D. Converter lets you enjoy music thoroughly, even at the quietest levels.



JVC 200-disc changers give instant access to any of 200 discs (XL-MC334BK/ XL-MC2000BK)

JVC offers two extremely convenient and versatile 200-CD mega changers—the XL-MC334BK and XL-MC2000BK. Both are compact rotary types: You load discs one by one, placing each in a vertical slot on the turntable. As a selected or programmed track is about to play, the turntable turns clockwise or counterclockwise to reach the desired disc quickly.

This is our "Play and Exchange" System: you can manually change up to 25 discs exposed at the front of the changer without interrupting playback. You can also conveniently eject the exposed disc at the exact center at a touch, choose discs and tracks with the simple twist of the jog dial, and play up to 200 discs in random order.



"Virtual user file" function (XL-MC334BK)

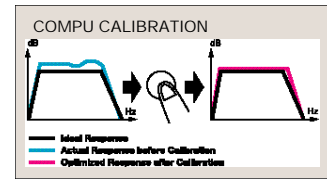
The XL-MC334BK's User File function lets you classify discs into 8 categories (by type, artist, user, etc.) and then put up to 32 CDs per category into the User File memory. Conveniently, you can give your own title to each of eight User Files.

Optical digital output

You can feed the digital output from a CD to a CD-R/RW recorder to make digital-to-digital recordings and produce your own high-quality compilation albums.

"COMPU CALIBRATION" — computer-controlled record calibration (TD-W354BK)

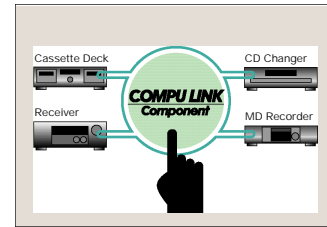
To enjoy the highest performance from your favorite tape, the deck's recording parameters must be calibrated (optimized) for that tape. Our TD-W354BK features COMPU CALIBRATION, a one-touch computer-controlled record calibration system developed just for this purpose. It adjusts bias, equalization and level (sensitivity) to ensure flat response, low distortion and extended high-frequency response. Conveniently, the last calibrated parameters are kept in memory for each type (normal, chrome and metal) and for each of the double cassette decks.



Enhanced COMPU LINK Control System

Most JVC audio components come with the Enhanced COMPU LINK Control System. Use a JVC CD player, CD/CDR recorder or cassette deck with a JVC receiver featuring the Enhanced COMPU LINK Control System to enjoy tremendous convenience*. For instance, when you touch the PLAY button on the CD player or on the remote control, the player and receiver are automatically turned on; the input is set to CD on the receiver, and play begins.

* Interactive operation between receivers and sources is available only with JVC models featuring the Enhanced COMPU LINK Control System.



XL-MC2000BK

200-Disc CD Changer



- All-in-one design—a rotary-type 200-CD changer in one chassis
- Electric CD door with Disc Eject: you can eject the disc up front at a touch.
- 1-bit D/A converter
- 8-times oversampling digital filter
- Optical digital output

- Play & Exchange System: You can manually change up to 25 of 200 discs without stopping play
- Continuous and random play from 200 discs
- Jog dial for disc and track selection

- Program play of up to 32 "steps" (tracks and discs) from 200 discs
- "CD Booklet File" included
- Enhanced COMPU LINK Control System
- Remote control unit

XL-MC334BK

200-Disc CD Changer with
CD Text

**TEXT
COMPU LINK**

CDTEXT



- All-in-one design—a rotary-type 200-CD changer in one chassis
- CD Text
- 1-bit P.E.M. D.D. Converter
- TEXT COMPU LINK
- Title memory (Disc title/performer name; up to 32 characters per title or name/200 CDs)
- Genre memory for 27 patterns
- 8 user files (up to 32 discs per file)
- "Reserve Program" of up to 32 "steps" (tracks and discs) from 200 discs
- Optical digital output

- Electric CD door with Disc Eject: You can eject the disc up front at a touch
- Play & Exchange System: You can manually change up to 25 of 200 discs without stopping play
- Search by disc title, performer and genre
- 8-times oversampling digital filter
- Continuous and random play from 200 discs
- Multi Jog dial for disc/track selection, title input, etc.
- Program play of up to 32 "steps" (tracks and discs) from 200 discs
- "CD Booklet File" included
- Enhanced COMPU LINK Control System
- Remote control unit

XL-FZ258BK

XL-FZ158BK

5-Disc Carousel CD
Changers



- Play & Exchange System: Change any of 4 discs while one more is being played
- 1-bit P.E.M. D.D. Converter
- Optical digital output
- 10-key pad for direct track access (XL-FZ258BK)

- 8-times oversampling digital filter
- Remote control (XL-FZ258BK)
- Headphone output with volume control
- 5 DISC keys on the front panel
- Continuous play and smart random play
- 20-track program chart
- Program play of up to 32 "steps" (tracks and discs) from 5 discs
- 4-way repeat
- Auto/manual search
- Enhanced COMPU LINK Control System

XL-Z232BK

Compact Disc Player



- 1-bit P.E.M. D.D. Converter
- Remote control with 10-key pad
- 8-times oversampling digital filter
- Optical digital output
- Program play of up to 32 tracks
- Smart random play
- 15-track program chart
- 10-key pad for direct track access
- Center-of-gravity mechanism layout
- 4-way repeat
- Auto/manual search
- Enhanced COMPU LINK Control System

TD-W354BK

Double-Mechanism
Cassette Deck



- Twin auto-reverse transports
- "COMPU CALIBRATION"
- Full-logic control
- Silent Mechanisms
- Pitch control (Deck A)
- Mic input with level control
- Multi Music Scan
- DDRP (Dynamics Detection Recording Processor)
- Continuous play of two tapes

- High-speed editing with synchro dubbing
- Dolby HX Pro (Deck B)
- Dolby B/C noise reduction

- Fluorescent level meters/counters
- Auto tape selector (Normal/CrO₂/Metal)

- Auto/synchro rec mute
- Headphone output
- Enhanced COMPU LINK Control System

TD-W254BK

Double-Mechanism
Cassette Deck



- Twin auto-reverse transports
- Full-logic control
- Silent Mechanisms
- Continuous play of two tapes
- DDRP (Dynamics Detection Recording Processor)
- High-speed editing with synchro dubbing
- Dolby HX Pro (Deck B)

- Dolby B/C noise reduction
- Fluorescent level meters/counters

- Auto/synchro rec mute
- Auto tape selector (Normal/CrO₂/Metal)

- Headphone output
- Enhanced COMPU LINK Control System

Audio Accessories



HA-W300RF

900MHz FM Cordless Headphone System with Built-in Paging/Call Function



HA-W100RF

900MHz FM Cordless Headphone System



HA-DX3

Digital Reference Stereo Headphones



HA-DX1

Digital Reference Stereo Headphones n



HA-G77

Closed Type Stereo Headphones



HA-G55

Closed Type Stereo Headphones



HA-G33

Closed Type Stereo Headphones



HA-G11

Closed Type Stereo Headphones



HA-V560

Digital-Ready Stereo Headphones



HA-P75

Digital-Ready Stereo Folding Headphones



HA-CD71F

Digital-Ready Lightweight Stereo Folding Headphones



HA-CD70F

Digital-Ready Lightweight Stereo Folding Headphones



HA-CD58

Digital-Ready Lightweight Stereo Headphones



HA-33

Lightweight Stereo Headphones



MV-89

Dynamic Microphone



MV-79

Dynamic Microphone



MV-29

Dynamic Microphone



MV-19

Dynamic Microphone

*Dolby,™ the double-D symbol and "Dolby HX Pro" are trademarks

Notice: It should be noted that it may be unlawful to re-record pre-recorded tapes, records, or

SPECIFICATIONS

Stereo Receivers							
AMPLIFIER SECTION	RX-9000VBK	RX-8000VBK	RX-7000VBK	RX-6500VBK	RX-6000VBK	RX-5000VBK	
Output Power: Stereo	120 watts per channel, min. RMS, driven into 8 ohms from 20Hz to 20kHz, with no more than 0.02% total harmonic distortion 120 watts per channel, min. RMS, driven into 4 ohms from 20Hz to 20kHz, with no more than 0.08% total harmonic distortion	120 watts per channel, min. RMS, driven into 8 ohms from 20Hz to 20kHz, with no more than 0.02% total harmonic distortion 120 watts per channel, min. RMS, driven into 4 ohms from 20Hz to 20kHz, with no more than 0.08% total harmonic distortion	110 watts per channel, min. RMS, driven into 8 ohms from 20Hz to 20kHz, with no more than 0.06% total harmonic distortion	100 watts per channel, min. RMS, driven into 8 ohms from 40Hz to 20kHz, with no more than 0.8% total harmonic distortion	100 watts per channel, min. RMS, driven into 8 ohms from 40Hz to 20kHz, with no more than 0.8% total harmonic distortion	100 watts per channel, min. RMS, driven into 8 ohms from 40Hz to 20kHz, with no more than 0.8% total harmonic distortion	100 watts per channel, min. RMS, driven into 8 ohms from 40Hz to 20kHz, with no more than 0.8% total harmonic distortion
Surround:							
Front Channels	100 watts per channel, min. RMS, driven into 8 ohms at 1kHz, with no more than 0.8% total harmonic distortion	100 watts per channel, min. RMS, driven into 8 ohms at 1kHz, with no more than 0.8% total harmonic distortion	100 watts per channel, min. RMS, driven into 8 ohms at 1kHz, with no more than 0.8% total harmonic distortion	100 watts per channel, min. RMS, driven into 8 ohms at 1kHz, with no more than 0.8% total harmonic distortion	100 watts per channel, min. RMS, driven into 8 ohms at 1kHz, with no more than 0.8% total harmonic distortion	100 watts per channel, min. RMS, driven into 8 ohms at 1kHz, with no more than 0.8% total harmonic distortion	
Center Channel	100 watts, min. RMS, driven into 8 ohms at 1kHz, with no more than 0.8% total harmonic distortion	100 watts, min. RMS, driven into 8 ohms at 1kHz, with no more than 0.8% total harmonic distortion	100 watts, min. RMS, driven into 8 ohms at 1kHz, with no more than 0.8% total harmonic distortion	100 watts, min. RMS, driven into 8 ohms at 1kHz, with no more than 0.8% total harmonic distortion	100 watts, min. RMS, driven into 8 ohms at 1kHz, with no more than 0.8% total harmonic distortion	100 watts, min. RMS, driven into 8 ohms at 1kHz, with no more than 0.8% total harmonic distortion	
Rear Channels	100 watts per channel, min. RMS, driven into 8 ohms at 1kHz, with no more than 0.8% total harmonic distortion	100 watts per channel, min. RMS, driven into 8 ohms at 1kHz, with no more than 0.8% total harmonic distortion	100 watts per channel, min. RMS, driven into 8 ohms at 1kHz, with no more than 0.8% total harmonic distortion	100 watts per channel, min. RMS, driven into 8 ohms at 1kHz, with no more than 0.8% total harmonic distortion	100 watts per channel, min. RMS, driven into 8 ohms at 1kHz, with no more than 0.8% total harmonic distortion	100 watts per channel, min. RMS, driven into 8 ohms at 1kHz, with no more than 0.8% total harmonic distortion	
Input Sensitivity/Impedance							
PHONO	2.5mV/47k ohms	2.5mV/47k ohms	2.5mV/47k ohms	2.7mV/47k ohms	2.7mV/47k ohms	2.7mV/47k ohms	
OTHER INPUTS	200mV/47k ohms	200mV/47k ohms	200mV/47k ohms	220mV/47k ohms	220mV/47k ohms	220mV/47k ohms	
Signal-to-Noise Ratio (66 IHF/78 IHF)							
PHONO	70dB/78dB (REC OUT)	70dB/78dB (REC OUT)	70dB/78dB (REC OUT)	70dB/77dB (REC OUT)	70dB/77dB (REC OUT)	70dB/77dB (REC OUT)	
OTHER INPUTS	92dB/80dB	92dB/80dB	87dB/80dB	87dB/80dB	87dB/80dB	87dB/67dB	
Frequency Response:							
PHONO	20Hz — 20kHz (±1dB)	20Hz — 20kHz (±1dB)	20Hz — 20kHz (±1dB)	20Hz — 20kHz (±1dB)	20Hz — 20kHz (±1dB)	20Hz — 20kHz (±1dB)	
DVD MULTI	20Hz — 100kHz (+1dB, -3dB)	20Hz — 100kHz (+1dB, -3dB)	20Hz — 20kHz (±1dB)	—	—	20Hz — 20kHz (±1dB)	
OTHER INPUTS	20Hz — 20kHz (±1dB)	20Hz — 20kHz (±1dB)	20Hz — 20kHz (±1dB)	20Hz — 20kHz (±1dB)	20Hz — 20kHz (±1dB)	20Hz — 20kHz (±1dB)	
RIAA Phono Equalization	±1dB (20Hz — 20kHz)	±1dB (20Hz — 20kHz)	±0.5dB (20Hz — 20kHz)	±1dB (20Hz — 20kHz)	±1dB (20Hz — 20kHz)	±1dB (20Hz — 20kHz)	
FM TUNER SECTION (IHF)							
Usable Sensitivity	12.8dBf (1.2µV/75 ohms)	12.8dBf (1.2µV/75 ohms)	12.8dBf (1.2µV/75 ohms)	12.8dBf (1.2µV/75 ohms)	12.8dBf (1.2µV/75 ohms)	12.8dBf (1.2µV/75 ohms)	
Quieting Sensitivity: MONO	21.3dBf (3.2µV/75 ohms)	21.3dBf (3.2µV/75 ohms)	21.3dBf (3.2µV/75 ohms)	21.3dBf (3.2µV/75 ohms)	21.3dBf (3.2µV/75 ohms)	21.3dBf (3.2µV/75 ohms)	
STEREO	41.3dBf (31.5µV/75 ohms)	41.3dBf (31.5µV/75 ohms)	41.3dBf (31.5µV/75 ohms)	41.3dBf (31.5µV/75 ohms)	41.3dBf (31.5µV/75 ohms)	41.3dBf (31.5µV/75 ohms)	
Stereo Separation at REC OUT (1 kHz)	35dB	35dB	35dB	35dB	35dB	35dB	
Distortion (1kHz) MONO/STEREO	0.4%/0.6%	0.4%/0.6%	0.4%/0.6%	0.4%/0.6%	0.4%/0.6%	0.4%/0.6%	
Signal-to-Noise Ratio (IHF-A weighted)							
MONO/STEREO (at 85dBf)	78dB/73dB	78dB/73dB	78dB/73dB	78dB/73dB	78dB/73dB	78dB/73dB	
Selectivity (±400kHz)	45dB	45dB	45dB	45dB	45dB	45dB	
Capture Ratio (at 85 dBf)	2dB	2dB	2dB	2dB	2dB	2dB	
IF Response Ratio (98 MHz)	85dB	85dB	85dB	85dB	85dB	85dB	
Frequency Response	30Hz — 15kHz (+0.5, -3dB)	30Hz — 15kHz (+0.5, -3dB)	30Hz — 15kHz (+0.5, -3dB)	30Hz — 15kHz (+0.5, -3dB)	30Hz — 15kHz (+0.5, -3dB)	30Hz — 15kHz (+0.5, -3dB)	
AM TUNER SECTION							
Usable Sensitivity	400µV/m (Loop antenna)	400µV/m (Loop antenna)	400µV/m (Loop antenna)	400µV/m (Loop antenna)	400µV/m (Loop antenna)	400µV/m (Loop antenna)	
Signal-to-Noise Ratio (100mV/m)	50dB	50dB	50dB	50dB	50dB	50dB	
Selectivity (±10kHz)	23dB	23dB	23dB	23dB	23dB	23dB	
VIDEO INPUTS/OUTPUTS							
Output Signal Level:	S-Video -Y S-Video -C Composite	1Vp-p (at 1Vp-p input) 0.286Vp-p (at 0.286Vp-p input) 1Vp-p (at 1Vp-p input)	1Vp-p (at 1Vp-p input) 0.286Vp-p (at 0.286Vp-p input) 1Vp-p (at 1Vp-p input)	1Vp-p (at 1Vp-p input) 0.286Vp-p (at 0.286Vp-p input) 1Vp-p (at 1Vp-p input)	1Vp-p (at 1Vp-p input) 0.286Vp-p (at 0.286Vp-p input) 1Vp-p (at 1Vp-p input)	1Vp-p (at 1Vp-p input) 0.286Vp-p (at 0.286Vp-p input) 1Vp-p (at 1Vp-p input)	— — 1Vp-p (at 1Vp-p input)
Impedance	75 ohms unbalanced	75 ohms unbalanced	75 ohms unbalanced	75 ohms unbalanced	75 ohms unbalanced	75 ohms unbalanced	
Synchronization	Negative	Negative	Negative	Negative	Negative	Negative	
Signal-to-Noise Ratio	45dB	45dB	45dB	45dB	45dB	45dB	
Crosstalk	45dB (3.58MHz)	45dB (3.58MHz)	45dB (3.58MHz)	45dB (3.58MHz)	45dB (3.58MHz)	45dB (3.58MHz)	
Dimensions (W X H X D)	17 ³ / ₁₆ X 6 ³ / ₁₆ X 16 ¹ / ₄ inches 435 X 157 X 412.5 mm	17 ³ / ₁₆ X 6 ³ / ₁₆ X 16 ¹ / ₄ inches 435 X 157 X 412.5 mm	17 ³ / ₁₆ X 6 ³ / ₁₆ X 16 ¹ / ₄ inches 435 X 157 X 412.5 mm	17 ³ / ₁₆ X 5 ³ / ₁₆ X 15 ¹ / ₁₆ inches 435 X 146 X 403.5 mm	17 ³ / ₁₆ X 5 ³ / ₁₆ X 15 ¹ / ₁₆ inches 435 X 146 X 403.5 mm	17 ³ / ₁₆ X 5 ³ / ₁₆ X 15 ¹ / ₁₆ inches 435 X 146 X 403.5 mm	17 ³ / ₁₆ X 4 X 11 ¹ / ₈ inches 435 X 101 X 281 mm
Weight	26.3 lbs. (11.9kg)	26.3 lbs. (11.9kg)	26.3 lbs. (11.9kg)	22.5 lbs. (10.2kg)	22.5 lbs. (10.2kg)	22.5 lbs. (10.2kg)	

Compact Disc Players

	XL-MC2000BK	XL-MC334BK	XL-FZ258BK	XL-FZ158BK	XL-Z232BK
Total Harmonic Distortion (1kHz)	0.006%	0.004%	0.0022%	0.0022%	0.0025%
Signal-to-Noise Ratio	103dB	105dB	107dB	107dB	106dB
Dynamic Range (1kHz)	96dB	96dB	98dB	98dB	98dB
Frequency Response	4Hz — 20kHz	4Hz — 20kHz	2Hz — 20kHz	2Hz — 20kHz	2Hz — 20kHz
Wow and Flutter	Unmeasurable	Unmeasurable	Unmeasurable	Unmeasurable	Unmeasurable
Channel Separation (1kHz)			94dB	94dB	94dB
Output Level (LINE)	2.0V RMS	2.0V RMS	2.0V RMS	2.0V RMS	2.0V RMS
Dimensions (W X H X D)	17 ³ / ₁₆ X 7 ⁷ / ₁₆ X 19 inches 435 X 199.5 X 482.5 mm	17 ³ / ₁₆ X 7 ⁷ / ₁₆ X 19 inches 435 X 199.5 X 482.5 mm	17 ³ / ₁₆ X 5 ¹ / ₁₆ X 15 ¹ / ₁₆ inches 435 X 128 X 388 mm	17 ³ / ₁₆ X 5 ¹ / ₁₆ X 15 ¹ / ₁₆ inches 435 X 128 X 388 mm	17 ³ / ₁₆ X 4 X 11 ¹ / ₈ inches 435 X 101 X 281 mm
Weight	17.2 lbs (7.8kg)	17.2 lbs (7.8kg)	11.3 lbs (5.1kg)	11.3 lbs (5.1kg)	7.3 lbs (3.3kg)

DVD Players

	XV-D723GD	XV-523GD	XV-D701BK	XV-M555BK
AUDIO SECTION				
Total Harmonic Distortion	Less than 0.002%	0.002%	0.002%	0.002%
Dynamic Range:	16 bit 20/24 bit	More than 100dB More than 108dB	99dB 108dB	98dB 106dB
Frequency Response:	CD (fs=44.1kHz) DVD (fs=48kHz) DVD (fs=96kHz) DVD (fs=192kHz)	2Hz — 20kHz 2Hz — 22kHz 2Hz — 44kHz 2Hz — 88kHz	2Hz — 20kHz 2Hz — 22kHz 2Hz — 44kHz	2Hz — 20kHz 2Hz — 22kHz 2Hz — 44kHz
Output Level:	2.0V RMS	2.0V RMS	2.0V RMS	2.0V RMS
VIDEO SECTION				
Horizontal Resolution	500 Lines	500 Lines	500 Lines	500 Lines
Signal-to-Noise Ratio	65dB	65dB	65dB	65dB
Output Level:	Component-Y -P _b /P _r S-video-Y S-video-C Composite	1.0Vp-p/75 ohms 0.7Vp-p/75 ohms 1.0Vp-p/75 ohms 0.286Vp-p/75 ohms 1.0Vp-p/75 ohms	1.0Vp-p/75 ohms 0.286Vp-p/75 ohms 1.0Vp-p/75 ohms	1.0Vp-p/75 ohms 0.286Vp-p/75 ohms 1.0Vp-p/75 ohms
Dimensions (W X H X D)	17 ³ / ₁₆ X 4 ⁷ / ₁₆ X 13 ³ / ₁₆ inches 435 X 112.5 X 334 mm	17 ³ / ₁₆ X 3 ³ / ₁₆ X 11 ³ / ₁₆ inches 435 X 95 X 297 mm	17 ³ / ₁₆ X 4 ⁷ / ₁₆ X 13 ³ / ₁₆ inches 435 X 112 X 335 mm	17 ³ / ₁₆ X 5 X 12 ³ / ₁₆ inches 435 X 126.5 X 324.6 mm
Weight	8.2 lbs (3.7kg)	7.1 lbs (3.2kg)	10.6 lbs (4.8kg)	11.3 lbs (5.1kg)

CD Recorder

XL-R5000BK

CD CHANGER SECTION	
Total Harmonic Distortion (1kHz)	0.0063%
Signal-to-Noise Ratio	94dB
Dynamic Range (1kHz)	91dB
Frequency Response	20Hz — 20kHz
Wow and Flutter	Unmeasurable
Output Level (LINE)	2.0 V RMS (Full scale)
CD RECORDER SECTION	
Sampling Frequency	32kHz/44.1kHz/48kHz
Frequency Response	20Hz — 20kHz
Minimum Input Level : Analog (LINE IN) Microphone	300mV (Full scale -12dB) 3mV (Full scale -12dB)
Signal-to-Noise Ratio	97dB (Playback)
Dynamic Range (1kHz)	93dB (Playback)
Dimensions (W X H X D)	17 ³ / ₁₆ X 5 X 12 ³ / ₁₆ inches 435 X 127 X 325 mm
Weight	13.9 lbs (6.3kg)

Double Cassette Decks

		TD-W354BK	TD-W254BK
Frequency Response at -20dB	Metal Tape SA/Chrome Tape Normal Tape	20 — 17,000Hz (30 — 16,000Hz ±3dB) 20 — 16,000Hz (30 — 15,000Hz ±3dB) 20 — 16,000Hz (30 — 15,000Hz ±3dB)	20 — 17,000Hz (30 — 16,000Hz ±3dB) 20 — 16,000Hz (30 — 15,000Hz ±3dB) 20 — 16,000Hz (30 — 15,000Hz ±3dB)
Signal-to-Noise Ratio		58dB* (Metal)	58dB* (Metal)
Wow and Flutter		0.08% (WRMS)	0.08% (WRMS)
Crosstalk (1kHz)		60dB	60dB
Harmonic Distortion: K3 (0VU, 315Hz)		0.8% (Metal)	0.8% (Metal)
Input Sensitivity/Impedance	Microphone (0VU) Line Input (0VU)	0.4mV/600 — 10k ohms (Matching Impedance) 80mV/50k ohms	— 80mV/50k ohms
Output Level/Impedance	Line Output (0VU) Headphones (0VU)	300mV/5k ohms 0.3mW/8 ohms (Matching impedance: 8 — 1k ohms)	300mV/5k ohms 0.3mW/8 ohms (Matching impedance: 8 — 1k ohms)
Dimensions (W X H X D)		17 ³ / ₁₆ X 5 ¹ / ₂ X 13 ³ / ₁₆ inches 435 X 139 X 331mm	17 ³ / ₁₆ X 5 ¹ / ₂ X 13 ³ / ₁₆ inches 435 X 139 X 331mm
Weight		10.9 lbs (4.9kg)	10.6 lbs (4.8kg)

* Metal tape, S:315Hz, K3:3%, N:A-weighted, without NR. The S/N is improved about 15dB at 500Hz and 20dB maximum at 1kHz — 10kHz with Dolby-C NR on, and 5dB at 1kHz and 10dB above 5kHz with Dolby-B NR on.

Headphones

	HA-W300RF	HA-W100RF	HA-DX3	HA-DX1	HA-G77	HA-G55	HA-G33	HA-G11	HA-V560	HA-P75
Type	Moving coil, closed	Moving coil, closed	Moving coil, closed	Moving coil, closed	Moving coil, closed	Moving coil, closed	Moving coil, closed	Moving coil, closed	Moving coil, closed	Moving coil, closed
Frequency Response	28 — 17,000Hz	20 — 12,000Hz	4 — 30,000Hz	5 — 30,000Hz	10 — 25,000Hz	12 — 25,000Hz	16 — 22,000Hz	18 — 22,000Hz	7 — 21,000Hz	10 — 23,000Hz
Nominal Impedance			90 ohms	45 ohms	32 ohms	32 ohms	32 ohms	32 ohms	32 ohms	32 ohms
Sensitivity (1kHz)			98dB/mW	98dB/mW	110dB/mW	110dB/mW	100dB/mW	98dB/mW	103dB/mW	108dB/mW
Max. Input Capability			100mW	100mW	100mW	100mW	50mW	50mW	50mW	50mW
Weight (without cord) with batteries	11.3 oz (320g)	9.9 oz (280g)	11.9 oz (340g)	10.5 oz (300g)	9.2 oz (260g)	9.6 oz (270g)	6.7 oz (190g)	5.3 oz (150g)	4.2 oz (120g)	4.4 oz (125g)
Cord Length	—	—	13 ft (4m)	13 ft (4m)	11.5 ft (3.5m)	11.5 ft (3.5m)	11.5 ft (3.5m)	9.8 ft (3m)	9.8 ft (3m)	4.9 ft (1.5m)

Headphones

	HA-CD71F	HA-CD70F	HA-CD58	HA-33
Type	Moving coil, open air	Moving coil, open air	Moving coil, open air	Moving coil, open air
Frequency Response	8 — 22,000Hz	8 — 22,000Hz	15 — 22,000Hz	17 — 25,000Hz
Nominal Impedance	32 ohms	32 ohms	32 ohms	32 ohms
Sensitivity (1kHz)	98dB/mW	98dB/mW	100dB/mW	100dB/mW
Max. Input Capability	50mW	50mW	50mW	50mW
Weight (without cord)	1.7 oz (48g)	1.7 oz (48g)	2.1 oz (58g)	1.5 oz (43g)
Cord Length	6.6 ft (2m)	6.6 ft (2m)	6.6 ft (2m)	4.9 ft (1.5m)

Microphones

	MV-89	MV-79	MV-29	MV-19
Type	Dynamic	Dynamic	Dynamic	Dynamic
Directivity	Uni-directional	Uni-directional	Uni-directional	Uni-directional
Frequency Response	100 — 15,000Hz	100 — 13,000Hz	100 — 13,000Hz	100 — 12,000Hz
Output Impedance	600 ohms	600 ohms	500 ohms	500 ohms
Sensitivity	-55dB	-55dB	-56dB	-56dB
Weight (without cord)	9.5 oz (270g)	5.1 oz (145g)	5.8 oz (165g)	2.6 oz (75g)
Cord Length	16.4 ft (5m)	16.4 ft (5m)	9.8 ft (3m)	6.6 ft (2m)

Receivers						
	RX-9000VBK	RX-8000VBK	RX-7000VBK	RX-6500VBK	RX-6000VBK	RX-5000VBK

Remote Control						
Multi-Brand A/V-CATV-DBS Remote Control (RF Signal)		-	-	-	-	-
Multi-Brand A/V-CATV-DBS Remote Control	-				-	-
A/V Remote Control	-	-	-	-		

Circuitry						
Surround Sound	Dolby Digital Decoder Built-in					-
	DTS Decoder Built-in					-
	DVD Multichannel Audio Compatible (5.1-Channel Input & 5 Separate Amps)				-	
	Dolby Pro Logic in Full Digital Processing					
3D-PHONIC	Dolby Digital (Digital)		-	-	-	-
	DTS (Digital)		-	-	-	-
	Dolby Pro Logic (Analog)					
DAP Mode		6	5	5	5	5
	Effect Control					
	Liveness Control		-	-	-	-
	Room Size Control		-	-	-	-
K2 Interface (All Channels)		-	-	-	-	-
1-bit P.E.M. D.D. Converter (All Channels)		-	-	-	-	-
Dynamic Super-A	5-channel		-	-	-	-
High Current 4-ohm Driving Capability			-	-	-	-
Discrete Amplifiers						

Input/Output		Audio		Video		Audio		Video		Audio		Video		Audio		Video		Audio		Video		
		Analog	Digital	C	S	Analog	Digital	C	S	Analog	Digital	C	S	Analog	Digital	C	S	Analog	Digital	C	S	
H: Gold-Plated Terminal		: Assignable / o : Initial Settings (Default)																				
	PHONO IN		-	-	-	-		-	-	-	-	-		-	-	-	-		-	-	-	-
	TV SOUND/DBS IN		o	'				o	'					o	'				'	'		-
	CD IN		o	'	-	-	-		o	'	-	-	-		o	'	-	-		o	'	-
	TAPE/MD IN/OUT			'	'	'	-	-			'	'	'	-	-			'	'	'	-	-
	VCR (1) IN/OUT			-	-					-	-				-	-				-	-	
	CD-R/VCR 2 IN/OUT		o	'	'			-		o	'	'		-	-	-	-	-	-	-	-	-
	DVD IN		Multi	'	o				Multi	'	o				2ch	'	o				Multi	'
	VIDEO (Front) IN	H	-	-	H	H	H	-	-	-	-	-	-	-	-	-	-	-	-	-	-	-
	MONITOR OUT	-		-			-		-				-		-			-		-		-
	Total Number of Inputs	8	3	1	5	4	8	3	1	5	4	6	2	1	3	3	6	2	1	3	2	6
	Total Number of Outputs	3	1	-	3	2	3	1	-	3	2	2	1	-	2	2	2	1	-	2	2	2
	Room B Pre-Out (L/R)		-	-	-	-	-	-	-	-	-	-	-	-	-	-	-	-	-	-	-	-
Speaker Terminals	Main L/R 1	H				H				H				H								
H: Banana-plug	Main L/R 2	H (Main 2/Sub Room)				H				H				H								
	Center	H				H																
	Surround L/R	H				H																
Subwoofer Output																						

C=Composite/S=S-Video

Functions						
Multi-Color On-Screen Display				-	-	-
Fluorescent Display						
	Dot-Matrix Display					-
	Sound Pattern Display					-
One-Touch Operation						
Multi-Room, Multi-Source		-	-	-	-	-
S.E.A.	Preset Memory	5	5	5	-	-
	Manual	(For Each Source)	(For Each Source)	(For Each Source)	-	-
Tone Control (Electronic Bass/Treble)	-	-	-			
Center Tone Control		-	-	-	-	-
Rear Tone Control		-	-	-	-	-
Bass Boost						
Balance						

Tuner						
Band	FM/AM	FM/AM	FM/AM	FM/AM	FM/AM	FM/AM
Number of Presets	30 FM/15 AM	30 FM/15 AM	30 FM/15 AM	30 FM/15 AM	30 FM/15 AM	30 FM/15 AM
Station Name Memory (4 Letters of All Stations)				-	-	-

Miscellaneous						
High-Rigidity Z-Chassis				-	-	-
TEXT COMPU LINK				-	-	-
Enhanced COMPU LINK Control System						
AV COMPU LINK						-

CD/CDR Multiple Compact Disc Recorder

		XL-R5000BK
CD Player Section		
Type	3-CD Triple-Tray	
Play & Exchange System		
CD-R/RW Compatible	(Finalized)	
1-Bit P.E.M. D.D. Converter		
3-Disc Smart Random Play/Continuous Play		
3-Disc Program Play	Max. 32 Steps	
Repeat Play		
Pitch Control	(±12%)	

CD-R/RW Section		
Sampling Rate Converter (32kHz/48kHz)		
Mix and Record (CD with Line/Line with Mic/Mic with CD)		
Auto Rec Mute		
Track Skip Write		
OPC/Running OPC		
Auto/Manual Track Marking		
Erase (Last Single Track/Last Multiple Tracks/All Tracks)		

General			
Programmable Timer (Daily Play/Rec, Once Play/Rec)			
CD-to-CD/RW Synchro Rec	High-Speed Dubbing	2X	
	One-Touch Rec	1 Disc Rec	
		1 Track Rec	
	Edit Rec	Listening	Max. 32 Steps
Program		Max. 32 Steps	
Number of Program Chart Tracks	20		
Mic Input			
Line Input/Output			
Optical Digital Input/Output			
Remote Control Unit			
Enhanced COMPU LINK Control System			

Compact Disc Players

		XL-FZ258BK	XL-FZ158BK	XL-Z232BK
Mechanism/Servo				
Type	5-Disc Carousel		5-Disc Carousel	Single
Digital Features				
8-Times Oversampling Digital Filter				
1-Bit Dual D/A Converter				
	P.E.M. D.D. Converter			

Remote Control				
Included				
Disc Keys			-	-
Numeric Keys				

Functions				
Play Mode	Continuous			-
	Program			
	Smart Random			
Number of Programs	32		32	32
Number of Program Chart Tracks	20		20	15
Disc Keys	5		5	-
Numeric Keys			-	-
Repeat	All Discs/Single Track			
	Program Repeat			
Search (Auto/Manual)				

Remote Control				
Optical Digital Output				
Headphone Output with Volume				-
Enhanced COMPU LINK Control System				

Mega CD Changers

		XL-MC2000BK	XL-MC334BK
Mechanism/Servo			
Type	200-disc 1-chassis		200-disc 1-chassis
Play & Exchange System (Up to 25 Discs)			
Electric CD Door			

Digital Features			
1-Bit Dual D/A Converter			
	P.E.M. D.D. Converter		-
8-Times Oversampling Digital Filter			

Remote Control			
Included			
Numeric Keys			

Functions			
Play Mode	Continue		
	Program		
	Random from 200 Discs		
	Intro		
	User File	-	
CD TEXT			
Title Memory (Up to 200 Discs)	Disc Title	-	Up to 32 Characters
	Performer	-	Up to 32 Characters
Genre Memory (Up to 200 Discs)	-		Select from 27 Patterns
8 User Files (Up to 32 Discs per File)			
Search	Disc Title	-	
	Performer	-	
	Genre	-	
Number of Programs (From 200 Discs)	32		32
Number of Program Chart Tracks	20		20
Multi Jog Dial			

Miscellaneous			
Optical Digital Output			
CD Booklet File			
TEXT COMPU LINK	-		
Enhanced COMPU LINK Control System			

Double Cassette Decks

		TD-W354BK	TD-W254BK
Mechanism			
Deck A	Record/Play	-	-
	Auto Reverse		
Deck B	Record/Play		
	Auto Reverse		
Full-Logic Silent Mechanism			
Cassette Shell Stabilizer			

Circuitry			
Dolby HX Pro			
Dolby B/C Noise Reduction		B/C	B/C
Pitch Control (Deck A)			
Mic Input			-
	Mixing Level Control		-

Display			
Display Panel	Fluorescent		Fluorescent
Dual Digital Counters			
Direction Indicator			

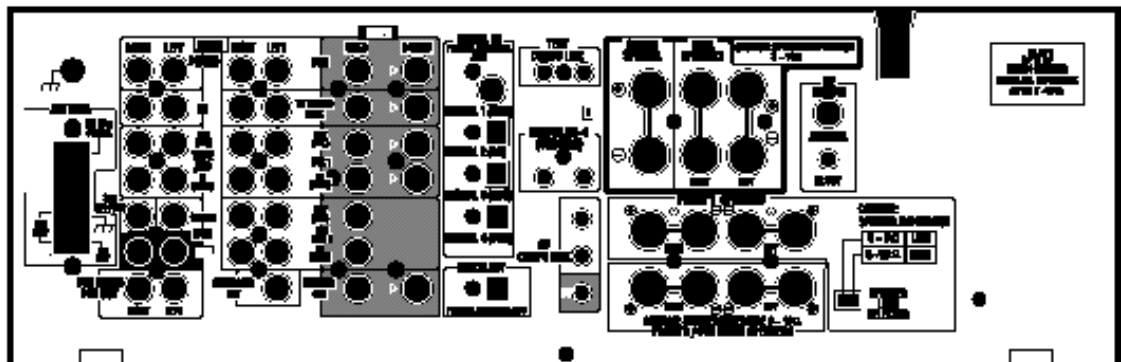
Functions			
COMPU CALIBRATION			
High-Speed Editing			
Multi Music Scan (Deck A/B)			
DDRP			
Auto Tape Selector (Deck A/B)			
Full Auto Stop			

Miscellaneous			
Headphone Output			
Enhanced COMPU LINK Control System			

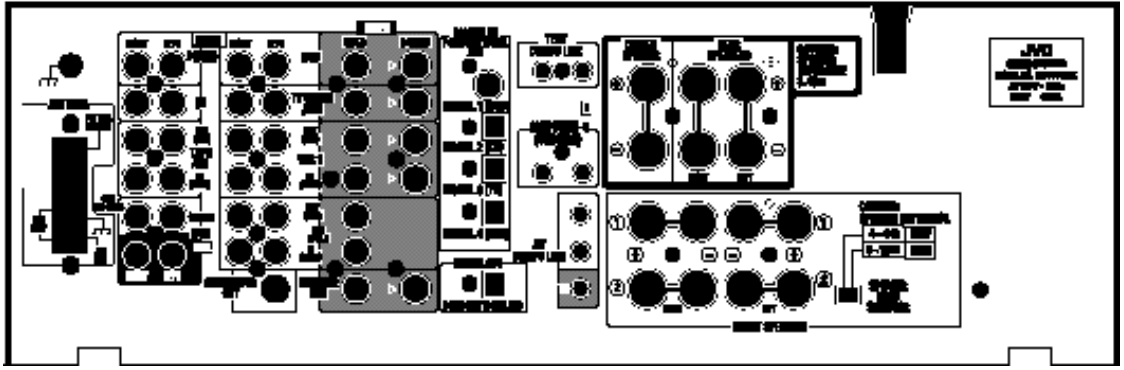
DVD Players					
		XV-D723GD	XV-523GD	XV-M555BK	XV-D701BK
Mechanism/Servo					
Type		Single	Single	3-disc Triple Tray, Play & Exchange	Single
DVD-Audio/DVD-Video/Video CD/CD Playback			-	-	-
DVD-Video/Video CD/CD/CD-RW Playback		-		-	-
DVD-Video/Video CD/CD Playback		-	-		
Video					
Video D/A Converter		10-bit/54MHz	10-bit/27MHz	10-bit/27MHz	10-bit/27MHz
Progressive Scan Out			-	-	-
VFP (Video Fine Processor): Number of Presets		2	-	-	3
User's Manual Mode			-	-	
Theater Position: Number of Presets		-	3	3	-
Variable Search (Forward/Reverse)					
Variable Slow (Forward/Reverse)					
RESUME (Bookmark) Function					
DIGEST Play (9 Pictures)					
STROBE Play (9 Pictures)					
ANGLE LIST (9 Angles)					
ZOOM Play (4 Times)					
Audio					
Audio D/A Converter (P.E.M. D.D. Converter)		24-bit/192kHz	24-bit/96kHz	24-bit/96kHz	24-bit/96kHz
Dynamic Range		108dB	106dB	106dB	108dB
Dolby Digital Decoder Built-in			-	-	-
DTS Decoder Built-in			-	-	-
Dolby Digital/DTS Digital Out					
3D-PHONIC					
96kHz K2 Interface		-	-	-	-
Remote Control					
Included					
Multi-Brand Remote					
Numeric Keys					
Shuttle Control			-	-	-
Joystick Control		-	-	-	
Terminals					
Video Out	Component	1	1	1	1
	S-Video	1	1	1	1
	Composite	1	1	1	1
Audio Out	Front L/R				
	Center, Rear L/R, Subwoofer		-	-	-
	Optical Digital	1	1	1	1
	Coaxial Digital	1	1	-	1
General					
On-Screen	GUI (Graphical User Interface)		-	-	
Display	On-Screen Language	Eng./Fre./Ger./Spa./Chi.(2)/Jpn.	Eng./Fre./Spa.	Eng./Fre./Spa.	Eng./Fre./Spa.
	Bit Rate Indicator (Video: Green, Audio: Yellow)		Numerical	Numerical	
	Language Indicator				
	Screen Saver	3 Patterns	2 Patterns	2 Patterns	3 Patterns
Shuttle Knob		-			
AV COMPU LINK					

Receiver Rear Panels

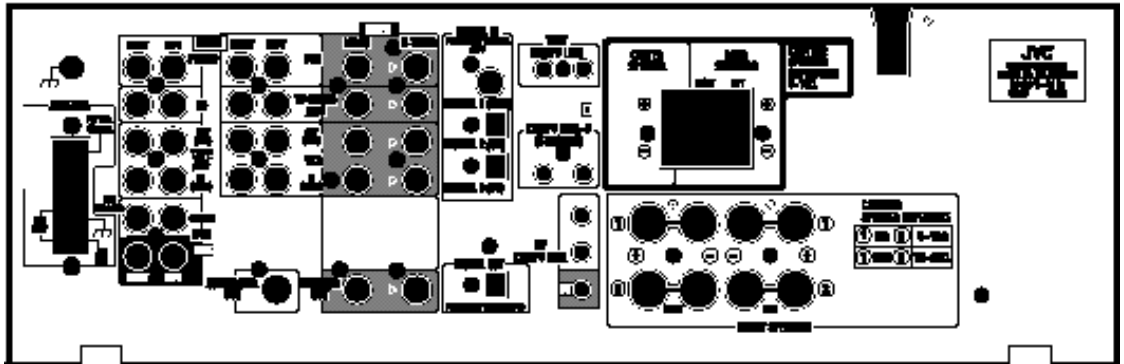
RX-9000VBK



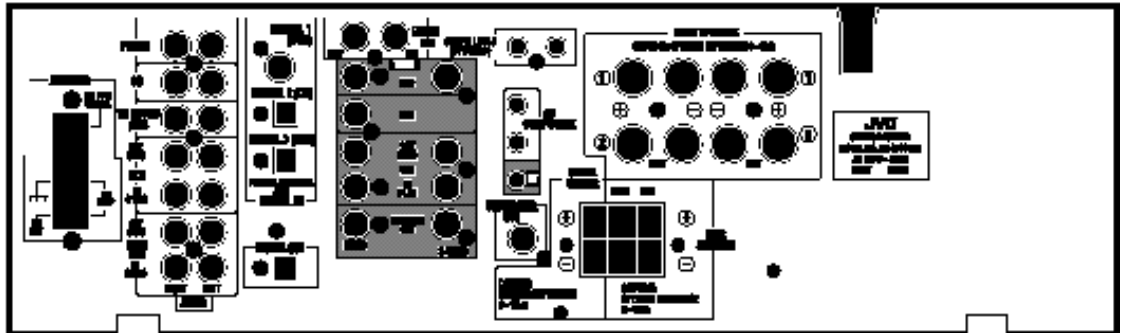
RX-8000VBK



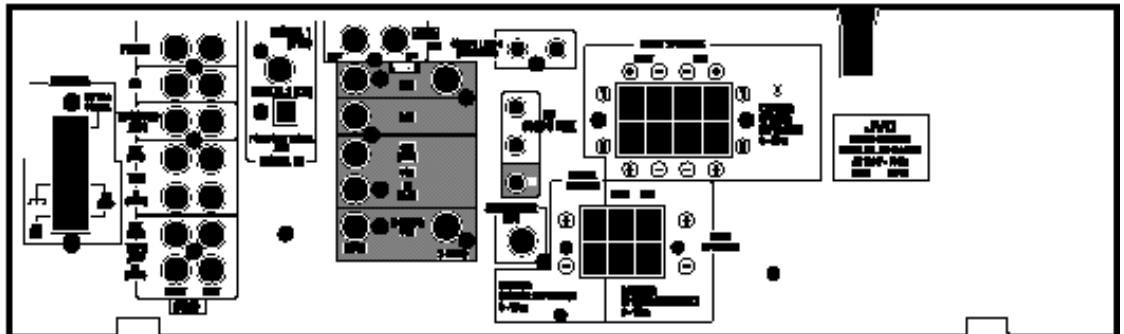
RX-7000VBK



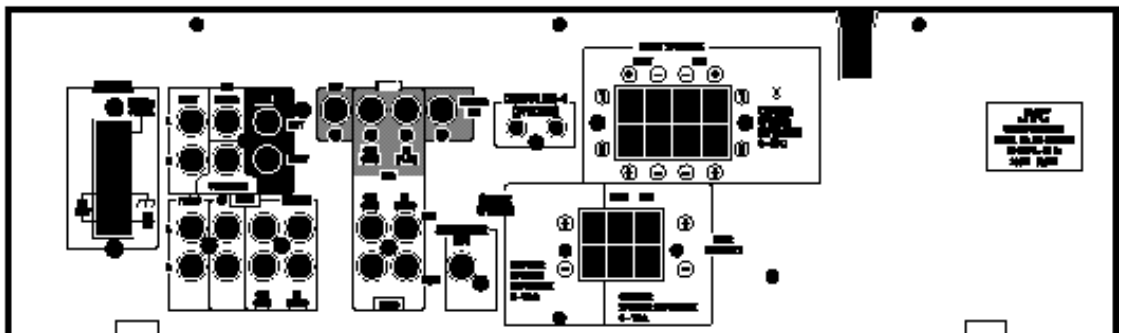
RX-6500VBK



RX-6000VBK

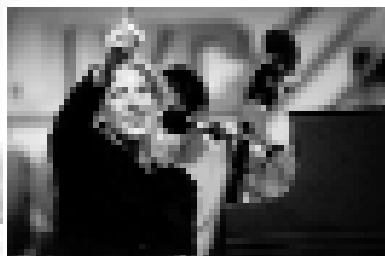


RX-5000VBK





We Bring the Music to You



Photographed at the 1999 JVC International Jazz Festivals



Wallace Roney

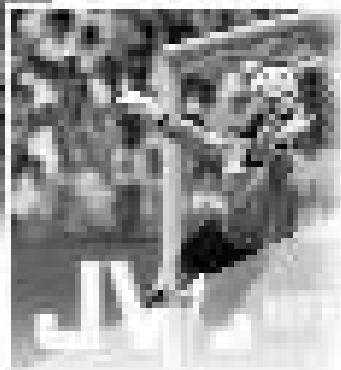
The JVC Jazz Festival is JVC's proud contribution to the world music scene. Through this annual event, JVC has brought the best of live jazz to audiences in both the United States and Europe for the past fifteen years.

Jazz and JVC—the best in music and the best in music reproduction come together at the JVC Jazz Festival. Be sure to join us.

JVC
INTERNATIONAL
JAZZ
Festival



JVC—Supporting the Best in Worldwide Entertainment



JVC is Proud to Support Soccer

As a true "corporate citizen" of the world, JVC is dedicated to community-building activities on a global scale, like promoting the world's sport—soccer.

In the spirit of global citizenship, JVC is proud to support the most international sporting event of all—World Cup Soccer. As we have done five consecutive times since 1982 we are sponsoring the 17th FIFA World Cup that will take place in Japan and Korea in 2002. JVC is also an official sponsor of the European Football Championship—EURO 2000. JVC is proud to support soccer.



Distributed By

JVC COMPANY OF AMERICA
DIVISION OF JVC AMERICAS CORP.
170 0 Valley Road, Wayne, N.J. 07470

*Design and specifications subject to change without notice
The photos of the products featured in this brochure may not
be of actual products that are available in your country*
Copyright © 2000, Victor Company of Japan, Limited (JVC). All rights Reserved.

<http://www.jvc.com>