

FEC

QUALITY MOUNTING SOLUTIONS

FLW-37AMD CANTILEVER WALL MOUNT



FEC FLW-37AMD WALL MOUNT

FOR ALL LCD MONITORS (OR PLASMAS WITH F48UAMD ADAPTOR PLATE) UP TO 80 Lbs

FLW-37AMD

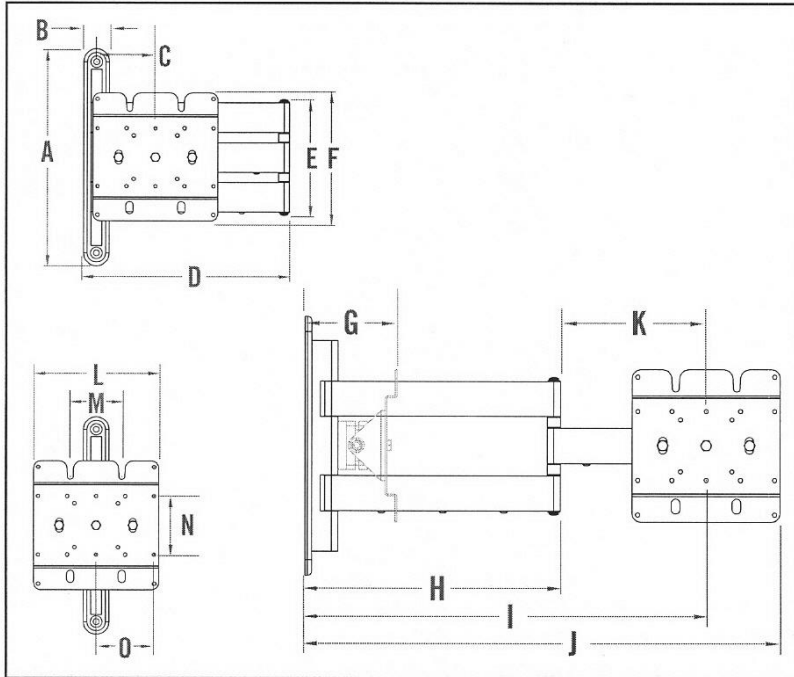
- ALLOWS LCD/PLASMA DISPLAY TO STORE FLAT AGAINST THE WALL
- 2 SWING ARMS PRE-ASSEMBLED FOR EASY AND SAFE ASSEMBLY
- MULTI-PIVOT DESIGN FOR VIEWING FLEXIBILITY
- HORIZONTAL LEVELING (ROLL CONTROL) CAPABLE
- 75/100/100x200/200x200mm VESA COMPATIBLE FOR ALL LCD DISPLAYS
- SUPPORTS LCD PANELS TO 80 Lbs (23-37")
- SUPPORTS PLASMA/NON VESA DISPLAY PANELS WITH OPTIONAL F48UAMD ADAPTOR PLATE

FEC

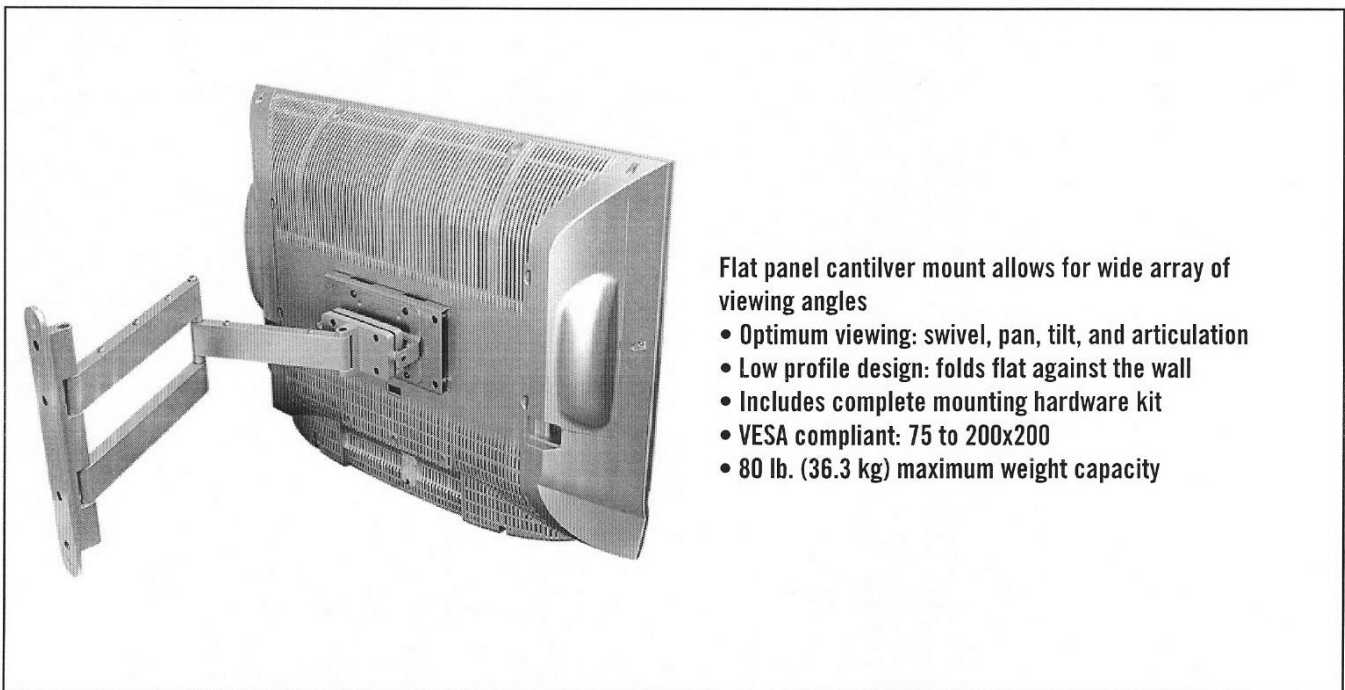
TEL 516-593-9565 FAX 516-593-9562 EMAIL doug@fecmountworld.com
PO BOX 266 ALBERTSON NY 11507

**FLW-37AMD DUAL ARTICULATING
 WALL MOUNT FOR LCD DISPLAYS
 TO 80Lbs.**

NOTE: PLASMA DISPLAYS TO 80Lbs MAY BE
 MOUNTED WITH OPTIONAL F48UAMD.

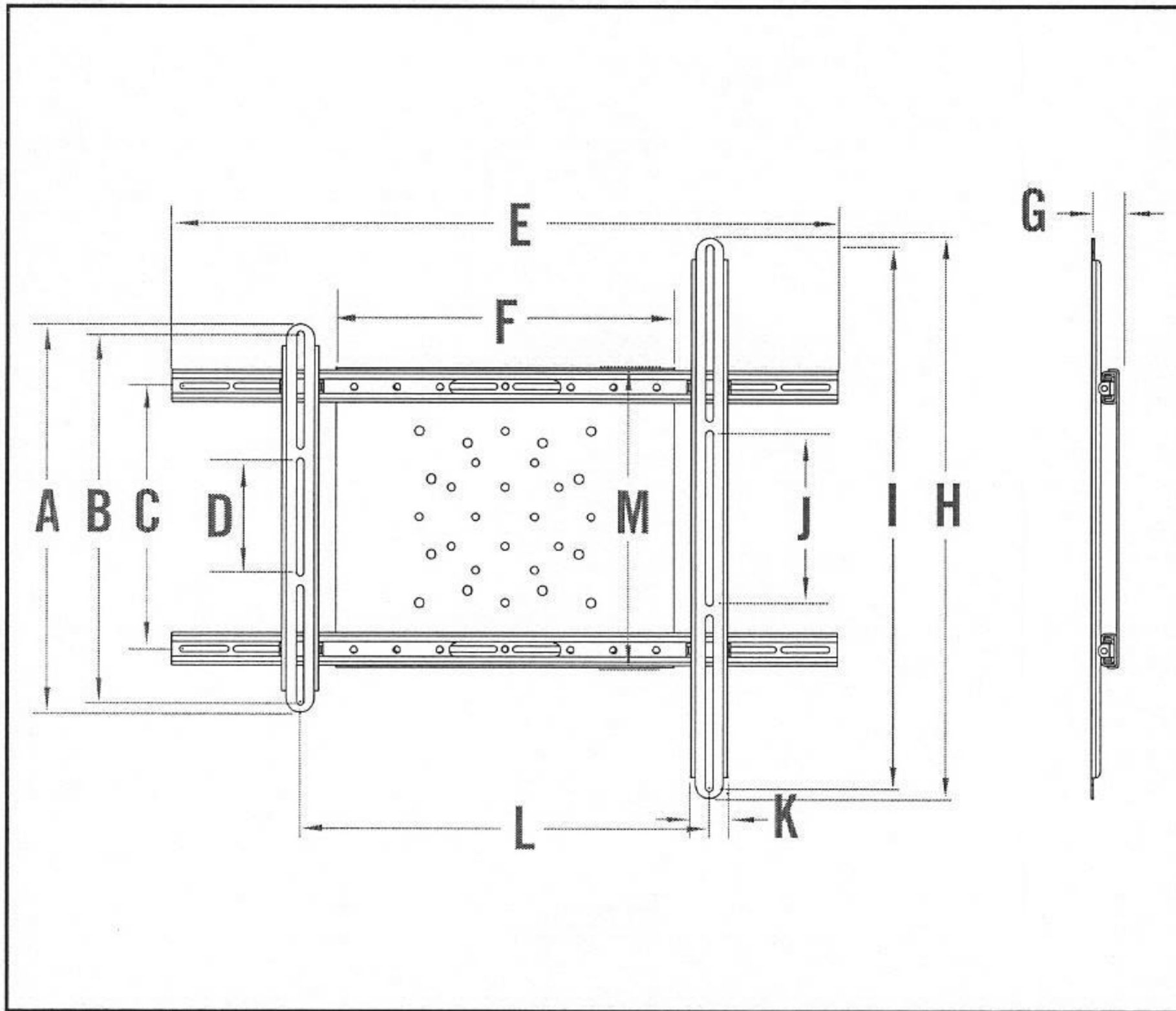


TECHNICAL SPECIFICATIONS		
A	14.69"	373.06mm
B	1.75"	44.45mm
C	3.75"	95.25mm
D	14.00"	355.60mm
E	7.31"	185.74mm
F	8.88"	225.43mm
G	3.50"	88.90mm
H	14.38"	365.13mm
I	23.13"	587.38mm
J	27.13"	688.98mm
K	8.38"	212.73mm
L	7.88"	200.00mm
M	3.50"	88.90mm
N	3.94"	100.00mm
O	3.94"	100.00mm

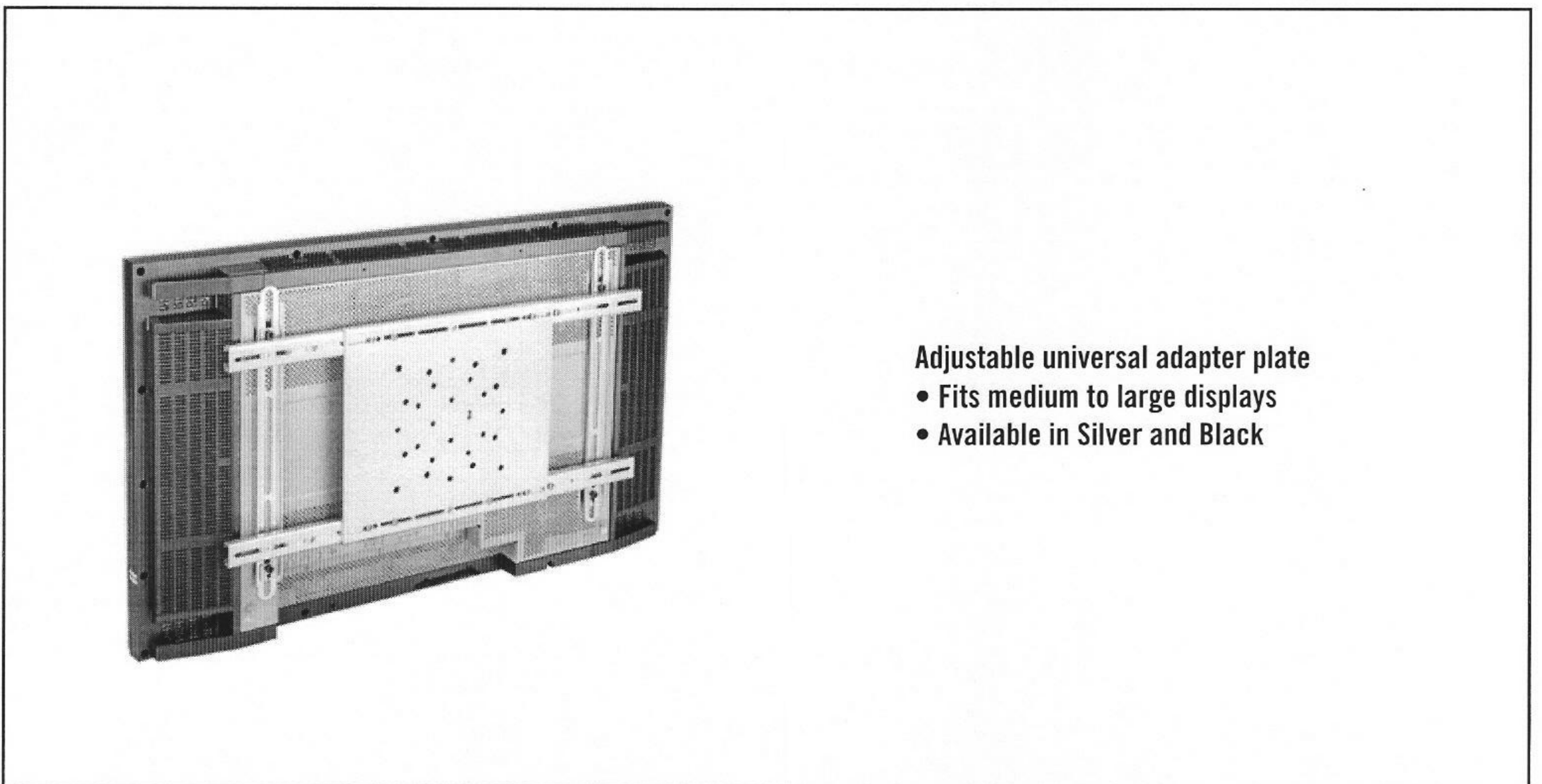


- Flat panel cantilver mount allows for wide array of viewing angles
- Optimum viewing: swivel, pan, tilt, and articulation
 - Low profile design: folds flat against the wall
 - Includes complete mounting hardware kit
 - VESA compliant: 75 to 200x200
 - 80 lb. (36.3 kg) maximum weight capacity

UNIVERSAL ADJUSTABLE ADAPTER
PART OF FLW-48AMD AND F-PL-C60 KITS
OPTIONAL FOR FLW-37AMD KIT



TECHNICAL SPECIFICATIONS		
A	18.00"	457.20mm
B	17.12"	434.85mm
C	12.38"	314.33mm
D	5.25"	133.35mm
E	31.00"	787.40mm
F	15.75"	400.05mm
G	1.30"	33.02mm
H	26.00"	660.40mm
I	25.13"	638.18mm
J	7.80"	198.12mm
K	1.71"	43.43mm
L	2.50-38.00"	63.50-965.90mm
M	14.13"	385.90mm



Adjustable universal adapter plate

- Fits medium to large displays
- Available in Silver and Black