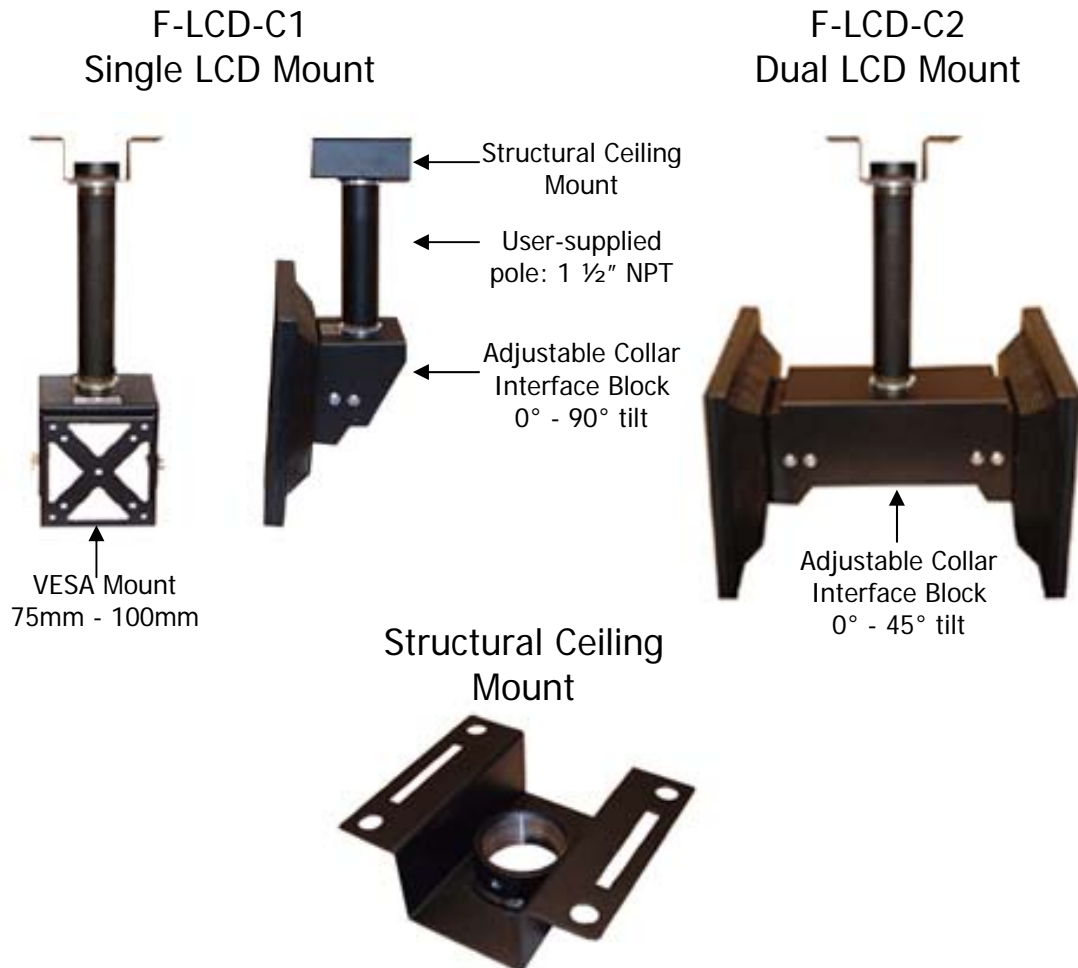


# FEC

QUALITY MOUNTING SOLUTIONS

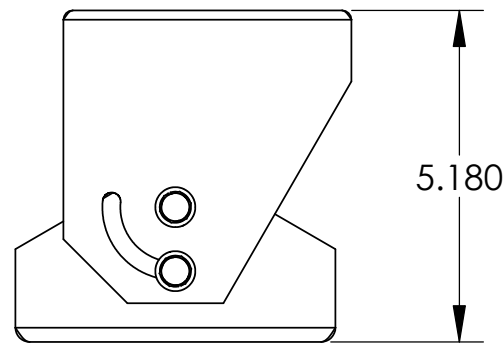
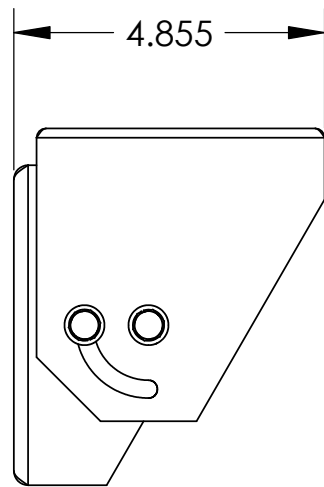
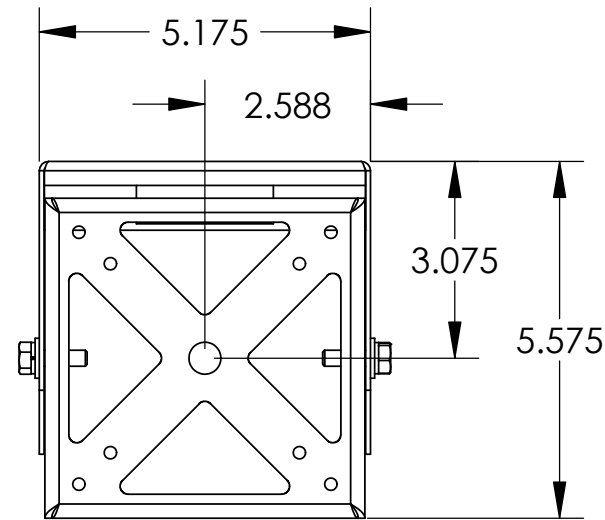
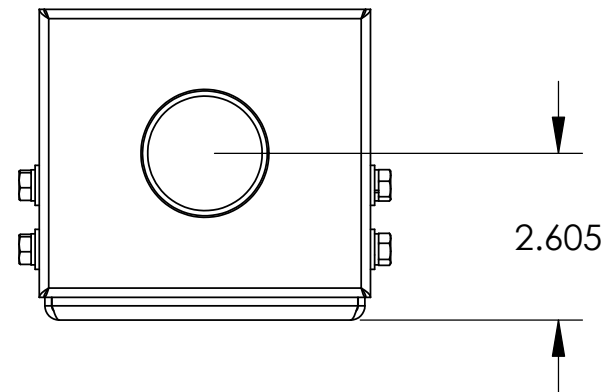
## FEC's LCD HEAVY DUTY SAFE AND SECURE PENDANT MOUNTS



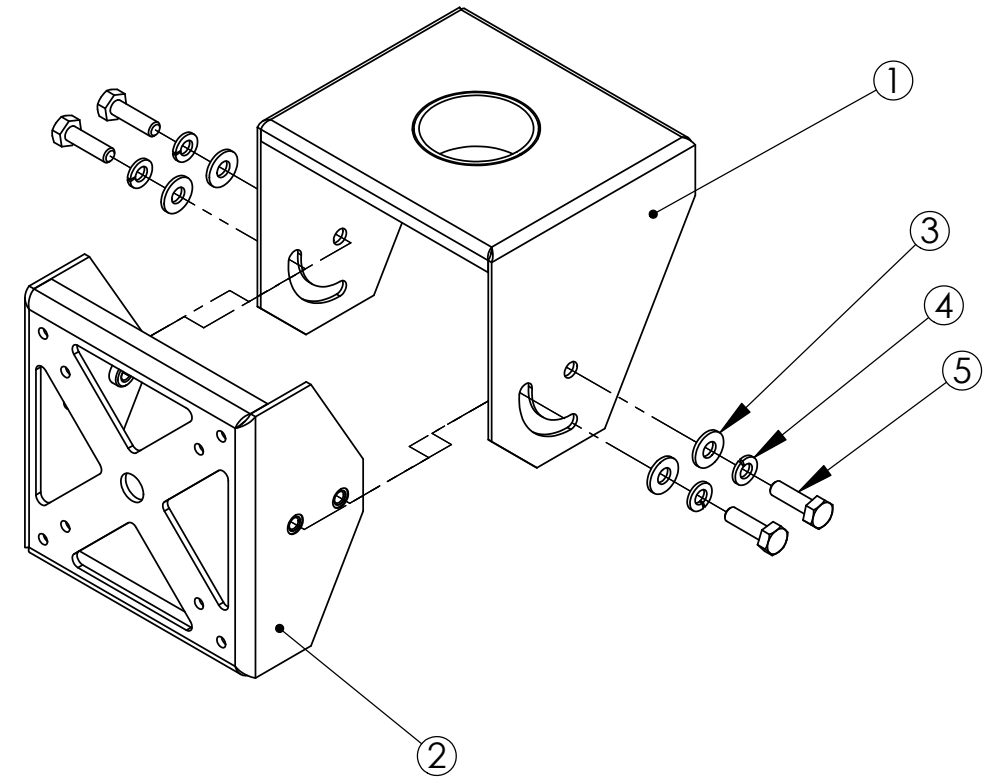
CHOOSE FEC WHEN THE INSTALLATION IS ***IMPORTANT-WHEN IT'S YOURS!!***

FEC's F-LCD SERIES PENDANT POLE MOUNTS OFFER YOU

- ***HEAVY DUTY AND SECURE LCD MOUNTING SOLUTIONS-UP TO 60Lbs***
- ***YOUR CHOICE OF SINGLE or DUAL LCD MOUNT CONFIGURATIONS***
- ***EXCELLENT CABLE MANAGEMENT DESIGN***
- ***INCLUDES THE STRUCTURAL CEILING MOUNT AND VESA INTERFACE BLOCK***
- ***SIMPLE AND QUICK INSTALLATION***
- ***ACCOMODATES BOTH 75mm AND 100mm VESA MOUNTING PLATES***
- ***YOUR CHOICE OF BLACK OR WHITE FINISH***

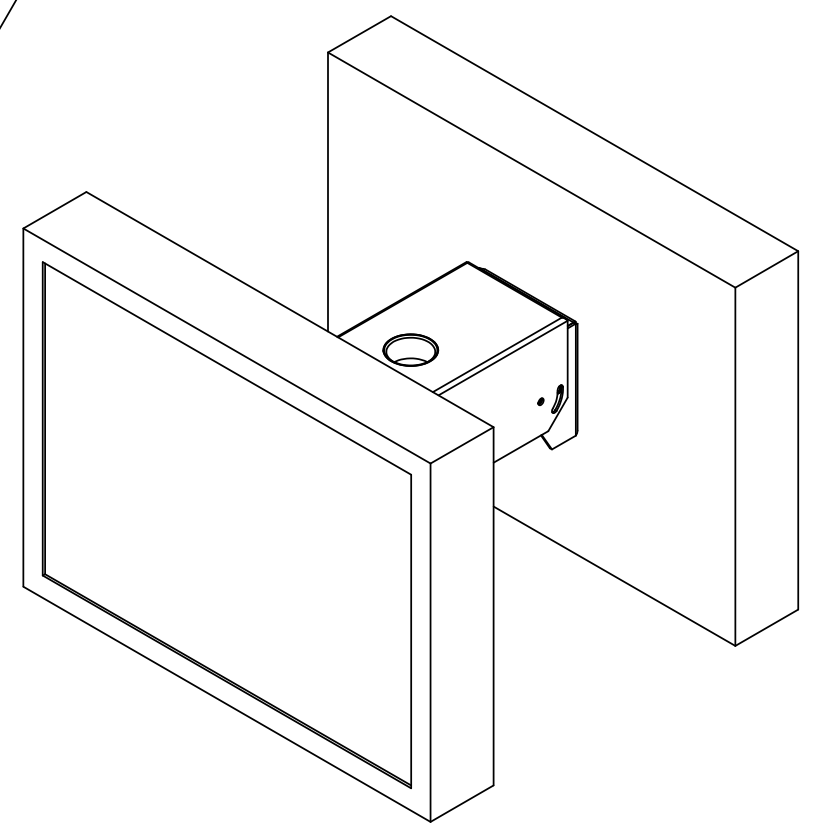
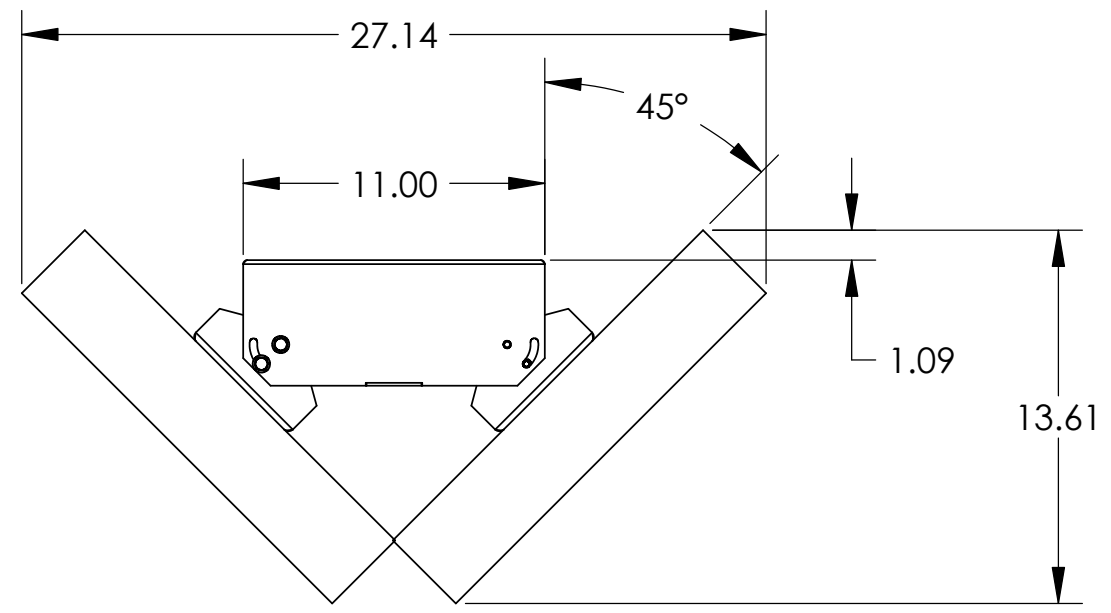
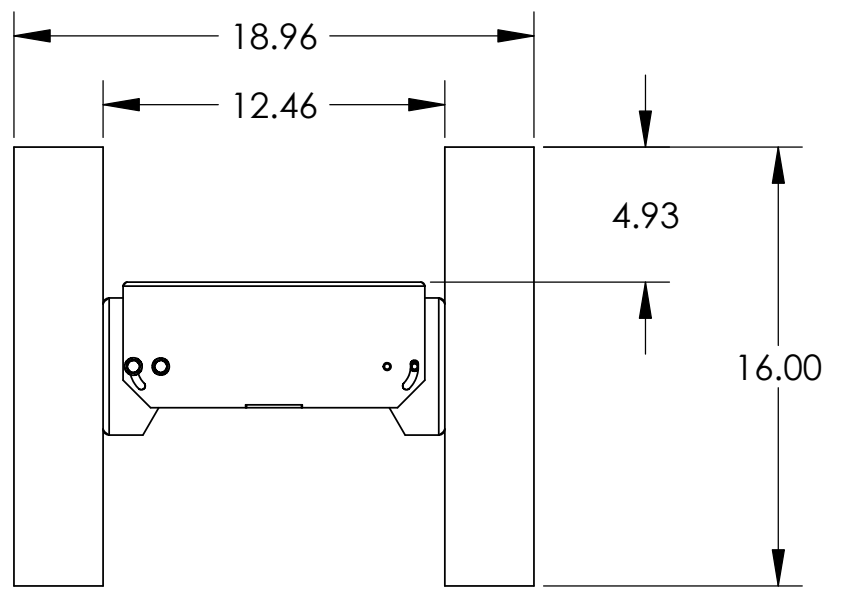
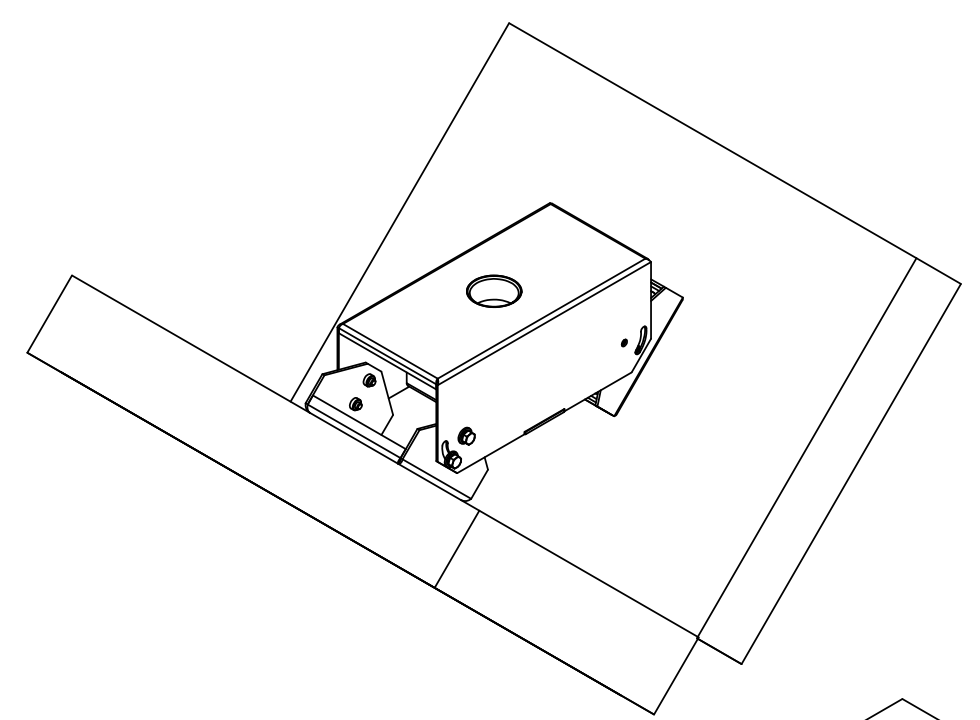
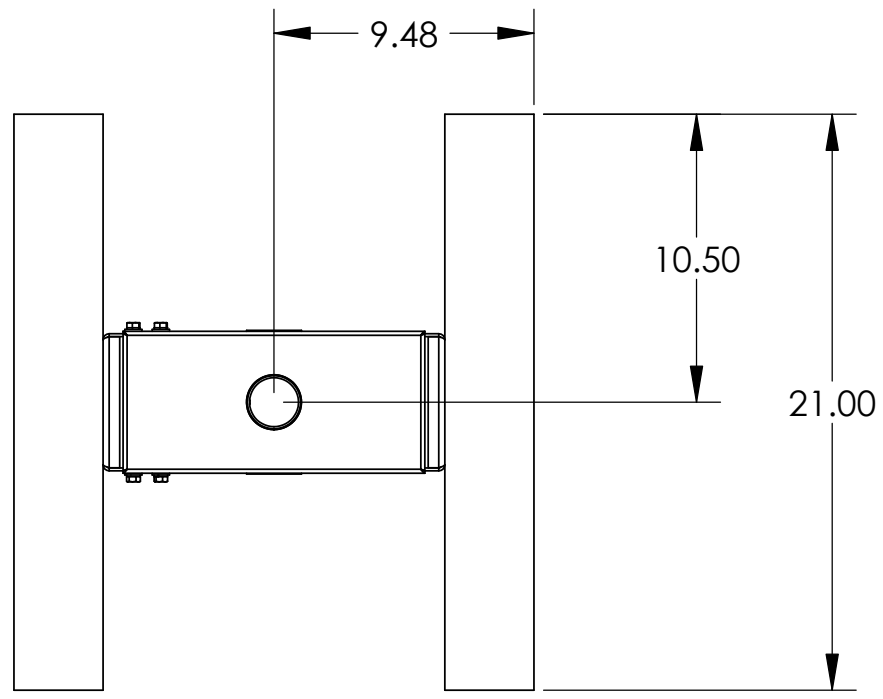


SHOWN ROTATED  
DOWN 90°

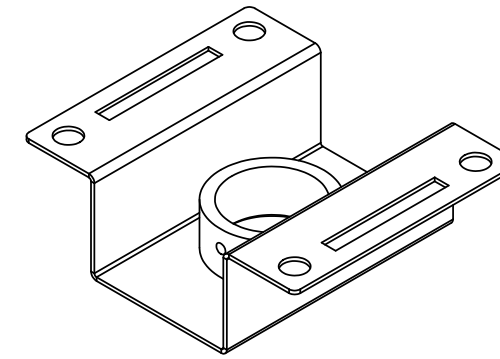
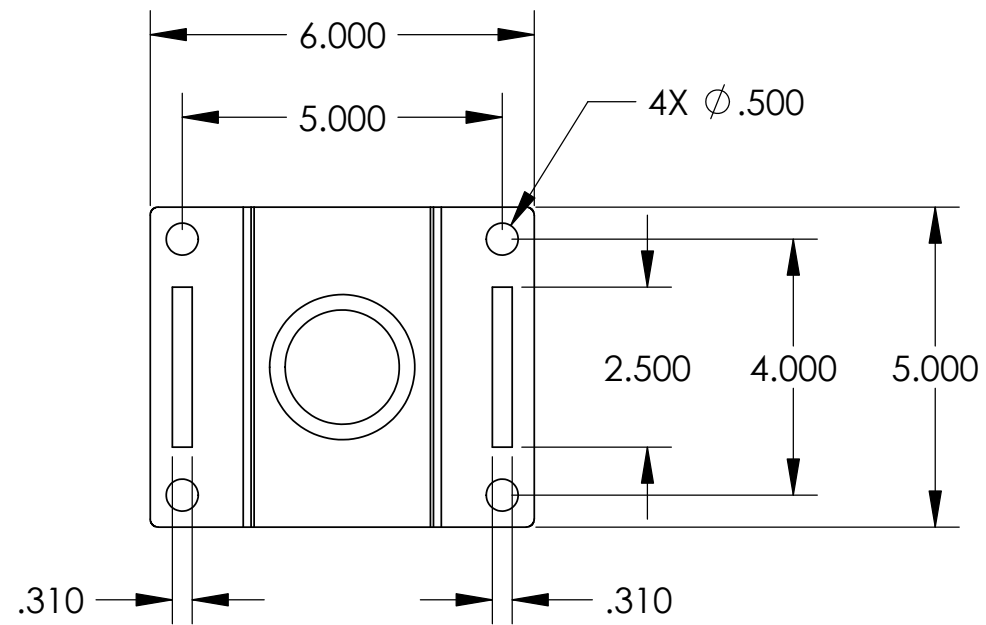


ITEM NO	QTY	PART NO	DESCRIPTION
1	1	65-551	VESA SWIVEL 1 1/2"POLE MNT WELD
2	1	65-547	VESA SWIVEL SCREEN MOUNT
3	4	5950-1220	1/4, FL WASHER, SAE, STL, ZI
4	4	5950-1570	1/4, LK WASHER, STL, ZI
5	4	5900-1245	1/4-20 X 1, HHCS, HX, GR5, PL

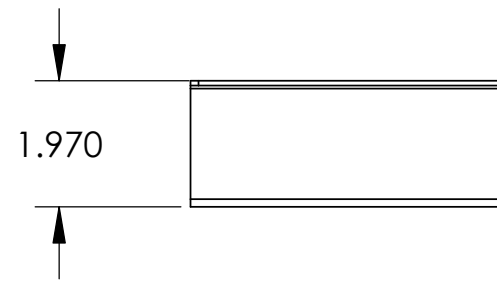
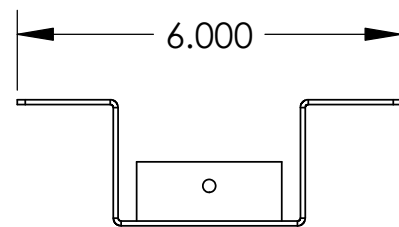
<b>FEC</b>		<b>FEC</b> P.O. BOX 266 ALBERTSON, NY 11507	
<small>THE INFORMATION CONTAINED IN THIS DRAWING IS THE PROPERTY OF FEC. ANY REPRODUCTION IN PART OR WHOLE WITHOUT THE WRITTEN PERMISSION OF FEC IS PROHIBITED</small>		<small>UNLESS OTHERWISE SPECIFIED DIMENSIONS ARE IN INCHES.</small> <b>TOLERANCES:</b> .XX = ± .02 .XXX = ± .010 .XXXX = ± .0050 ANGLE = ± 0.5	
DRAWN: RLS CHECKED:		DATE: 6/17/2004 DATE:	
MATERIAL: NONE FINISH: NONE		SIZE: <b>B</b>	DRAWING NO.: 65-550 REV: AX2
		SCALE: NONE	FILE NAME: 65-550.SLDDRW SHEET 2 OF 2
<b>VESA SWIVEL 1 1/2" POLE MOUNT</b>			



<b>FEC</b>		<b>FEC</b> P.O. BOX 266 ALBERTSON, NY 11507	
<small>THE INFORMATION CONTAINED IN THIS DRAWING IS THE PROPERTY OF FEC. ANY REPRODUCTION IN PART OR WHOLE WITHOUT THE WRITTEN PERMISSION OF FEC IS PROHIBITED</small>		<small>UNLESS OTHERWISE SPECIFIED DIMENSIONS ARE IN INCHES.</small> <b>TOLERANCES:</b> .XX = ± .02 .XXX = ± .010 .XXXX = ± .0050 ANGLE = ± 0.5	
		<b>VESA SWIVEL 1 1/2" POLE MOUNT</b>	
<small>DRAWN</small> RLS <small>CHECKED</small> <small>MATERIAL</small> NONE <small>FINISH</small> SEE WORK ORDER	<small>DATE</small> 6/17/2004 <small>DATE</small>  <small>FILE NAME</small> 65-552.SLDDRW	<small>SIZE</small> <b>B</b> <small>SCALE</small> NONE	<small>DRAWING NO.</small> 65-552 <small>REV</small> AX4 <small>SHEET 2 OF 2</small>



ISOMETRIC VIEW  
FOR REFERENCE ONLY



<b>FEC</b>		<b>FEC</b> P.O. BOX 266 ALBERTSON, NY 11507		
<small>THE INFORMATION CONTAINED IN THIS DRAWING IS THE PROPERTY OF FEC. ANY REPRODUCTION IN PART OR WHOLE WITHOUT THE WRITTEN PERMISSION OF FEC IS PROHIBITED</small>		<small>UNLESS OTHERWISE SPECIFIED DIMENSIONS ARE IN INCHES.</small> <b>TOLERANCES:</b> .XX = ± .02 .XXX = ± .010 .XXXX = ± .0050 ANGLE = ± 0.5		
		TITLE <b>LIGHT DUTY 1-1/2" TOP MNT</b>		
<small>DRAWN</small> BAR	<small>DATE</small> 7/24/2003	<small>SIZE</small> <b>B</b>	<small>DRAWING NO.</small> 65-368	<small>REV</small> B
<small>CHECKED</small>	<small>DATE</small>	<small>SCALE</small> NONE	<small>FILE NAME</small> 65-368.SLDDRW	<small>SHEET 2 OF 2</small>
<small>MATERIAL</small> NONE		<small>FINISH</small> SEE WORK ORDER		