

XAP[®]

XAP TH2 Telephone Interface

ClearOne.

A telephone interface for ClearOne's industry-leading XAP professional conferencing systems. The XAP TH2 enables conference call functionality for XAP installations with its single telephone line connection. Up to 16 units can be linked for greatly expanded conferencing capability.



THE CLEAR CHOICE FOR PROFESSIONAL AUDIO CONFERRING

APPLICATIONS

Conference Rooms
Boardrooms
Courtrooms
Distance Learning Facilities
Convention Centers and Hotels
Training Rooms
Telemedicine Facilities
Houses of Worship

ADVANTAGES

Superior Audio Performance

- + Digital signal processing technology ensures crystal clear audio
- + Full-time echo cancellation eliminates telephone line echo
- + Automatic level control
- + Digital anti-alias filter minimizes hum and Central Office switching noise

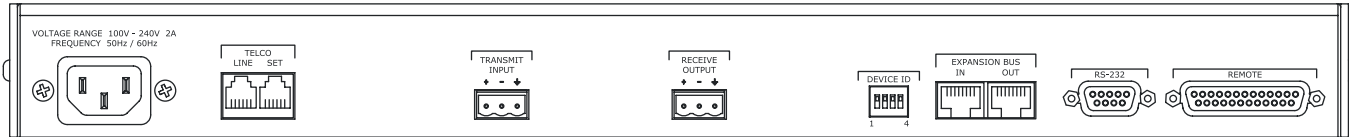
Configuration Flexibility & Scalability

- + Connects to ClearOne's XAP and PSR products through expansion bus port
- + Conference up to 16 callers in a XAP installation with multiple TH2 units
- + Configure through included G-Ware™ software, or through RS-232 port

Ease of Use & Control

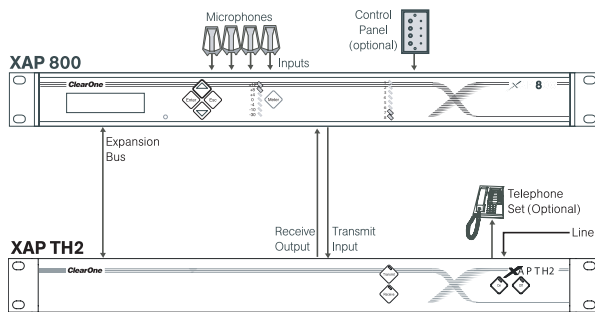
- + Speed dial stores 10 frequently dialed numbers
- + Incoming call ringing is heard through the loudspeaker
- + Selectable auto-answer and auto-disconnect
- + Users can dial telephone numbers, access voice mail, pagers, etc. without the use of a separate telephone device through integrated DTMF (touch-tone) dialing
- + Software-selectable country configurations

> XAP TH2 BACK PANEL



> INSTALLATION

Typical Installation in XAP 800 System



> SPECIFICATIONS



Audio Performance

Conditions: Unless otherwise specified, all measurements are performed with a 22 Hz to 22 kHz BW limit (no weighting). Transmit limiter and Receive ALC disabled
 Frequency Response: 250 Hz to 3.3 kHz ±1 dB
 THD+N: <0.2% re max level
 SNR: >62 dB re max level

Telco Line Echo Cancellation

Tail time: 31 ms
 Null: 55 dB nominal

Expansion Bus In/Out

Proprietary Network
 RJ-45 (2), 115.2 kbps,
 110 kΩ Impedance
 Category five twisted-pair cable
 80' (24 meters) maximum cable length between any two PSR1212s, XAP 800s or XAP 400s

RS-232

DB-9 female
 9,600/19,200/38,400 (default)/57,600 baud rate;
 8 bits, 1 stop, no parity
 Hardware flow control on (default)/off

Control/Status

DB-25 female
 Inputs: active low (pull to ground)
 Outputs: open collector, 40 VDC max,
 40 mA each
 +5 VDC (300 mA over-current protected)

Telco Line

RJ-11
 POTS (plain old telephone service) or analog extension from a PBX
 A-lead supervision provided

Telco Set

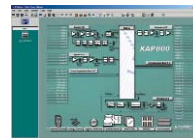
RJ-11
 Connect analog telephone set
 A-lead supervision provided

Transmit Input

Push-on terminal block, balanced, bridging
 Impedance: >10 kΩ
 Nominal Level: 0 dBu
 Maximum Level: 15 dBu

Receive Output

Push-on terminal block, balanced
 Impedance: <50 Ω
 Nominal Level: 0 dBu
 Maximum Level: 19 dBu



Device ID

4-position DIP switch

Set-up Software

G-Ware

Power Input Range

Auto-adjusting
 100-240 VAC; 50/60 Hz

Power Consumption

15 W typical

Approvals

FCC, CSA, IC, CE, NOM, ACA, SABS, JATE

Dimensions (LxDxH)

17.25" x 10.25" x 1.75"
 43.8 x 26 x 4.5 cm

> CLEARONE LOCATIONS

Headquarters:
 Salt Lake City, UT USA
 5225 Wiley Post Way
 Salt Lake City, UT 84116
 Tel: 801-975-7200;
 800-945-7730
 Fax: 801-977-0087
 sales@clearone.com

Latin America
 Tel: 801-974-3621
 global@clearone.com

EMEA
 Tel: 44 (0) 1189 036 053
 global@clearone.com

APAC
 Tel: 801-303-3388
 global@clearone.com