

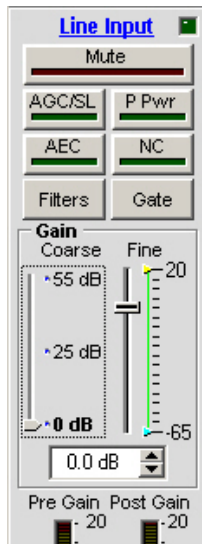
## Configuring microphone inputs for line-level devices

### Description

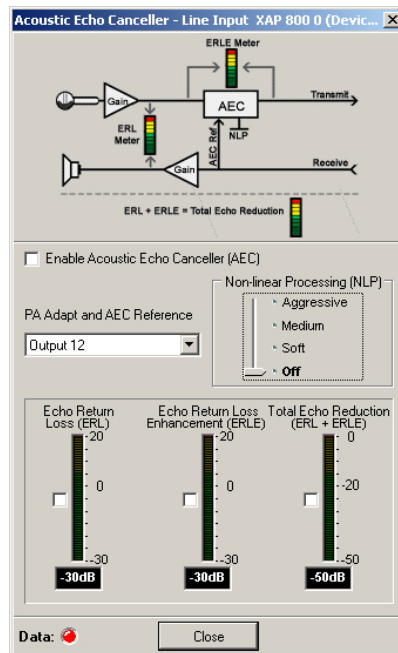
Integrators often elect to provision unused microphone inputs for line-level devices. While this is normally not an issue, it can cause conflicts with Acoustic Echo Cancellation, microphone gating groups, and other speech-related features of the XAP product. To prevent any possible problems, follow the instructions below.

### To configure a mic input for use with line-level devices

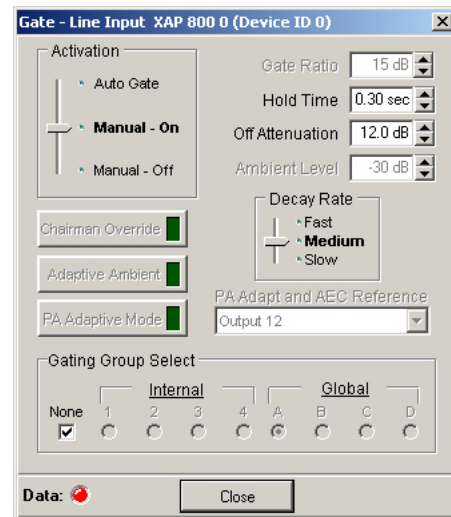
1. Select the mic input and change the Coarse Gain to **0 dB**. Turn the Phantom Power (**P Pwr**) off.
2. Click **AEC** to open the Acoustic Echo Canceller setup window.
3. Clear the **Enable Acoustic Echo Canceller (AEC)** check box.
4. Set the Non-linear Processing (NLP) to **Off** and then click **Close** to return to the Microphone Inputs window.
5. Click **Gate** to open the Gate window.
6. Turn off **PA Adaptive Mode** and **Adaptive Ambient** and then set the Activation to **Manual – On**.
7. In the Gating Group section, select **None**. Click **Close**.



Mic input configured as a line-level input



AEC settings for line-level input



Gate settings for line-level input