

## G-Ware Switcher

### Description

The G-Ware Switcher utility, introduced with G-Ware version 4.5, allows you to alternate between different G-Ware software versions that are installed on the same PC.

For example, if you need to upgrade the firmware on your ClearOne unit(s), G-Ware Switcher allows you to easily switch to an earlier version of G-Ware (such as 3.5), save the site files, and then switch to a later version (such as 4.5) to upgrade the firmware.

Prior to the 4.5 release, an older version of G-Ware had to be removed before a new version could be installed.

**Note:** To use multiple versions of G-Ware, you must install them in different directories (folders) on your PC, or G-Ware Switcher will not work.

### To install G-Ware for use with G-Ware Switcher

The current version of G-Ware is installed by default in a directory folder named G-Ware. To install additional versions of G-Ware on your PC, follow the instructions below.

1. Load the new G-Ware version (4.5 or later) in a unique directory (Path) by changing the folder name (see Figure 1).
2. Do not select "Add Icon to Desktop" when prompted during the installation process.
3. Restart your computer.

You are now ready to use G-Ware Switcher.

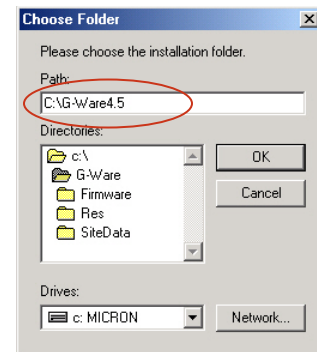


Figure 1. Renaming folder

### To Use G-Ware Switcher

1. Start G-Ware Switcher from the Windows Start menu by selecting Programs, ClearOne G-Ware, and then **G-Ware Switcher**.
2. G-Ware Switcher automatically searches the PC for G-Ware versions and displays them in the window. Select the G-Ware version you want to use.
3. If that version is not active, click **Re-Register/Make Shortcuts** and then click **Run**.



Figure 2. G-Ware Switcher

If it is active, simply click **Run**. The selected G-Ware version will start.

If you have installed a version of G-Ware that isn't displayed in the G-Ware Switcher window, click **Refresh**. G-Ware Switcher will locate and display the version.

**Note:** G-Ware Switcher will only scan the C drive for installed versions of the software.