

G-Ware and AP-Ware graphics and font size problem

**Description**

G-Ware and AP-Ware have specific font sizes coded into the software programs. If the font setting in your operating system is 120 DPI or Large Fonts, the buttons and text in G-Ware or AP-Ware will appear offset.

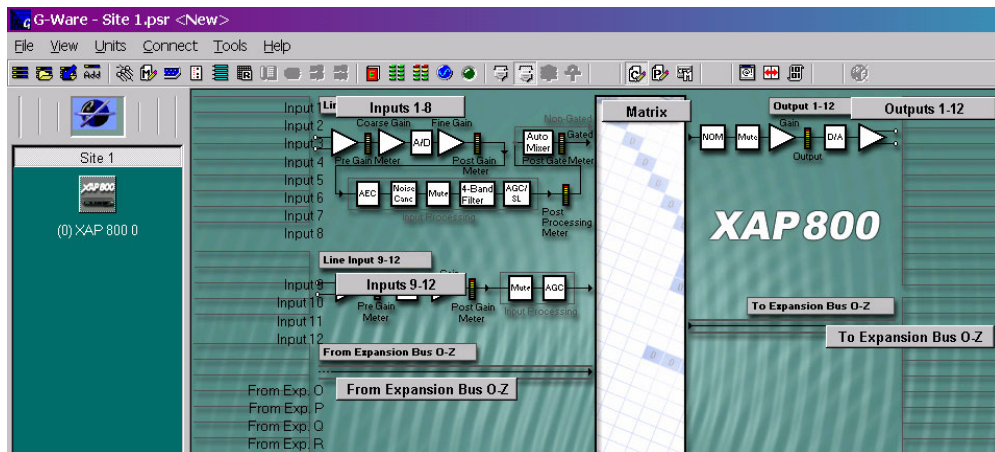


Figure 1. G-Ware flow screen when font size is set to Large Fonts or 120 DPI. Notice the Input and Output buttons and the labels are not aligned.

**Solution**

Set the operating system font size to 96 DPI or Small Fonts.

1. Close the G-Ware or AP-Ware application. Right-click on the desktop and then click **Properties** to open the Display Properties window.

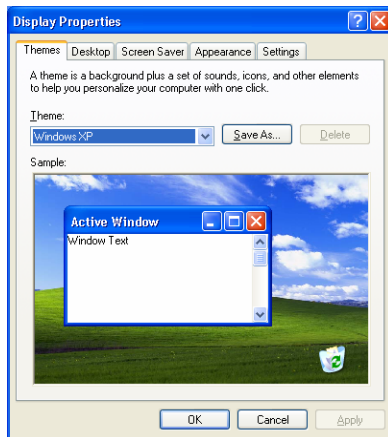


Figure 2. Display Properties window in Windows XP

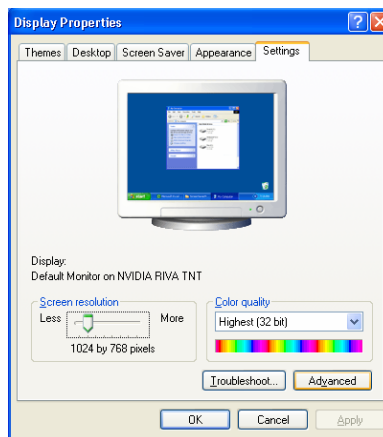


Figure 3. Display Properties window, Settings tab

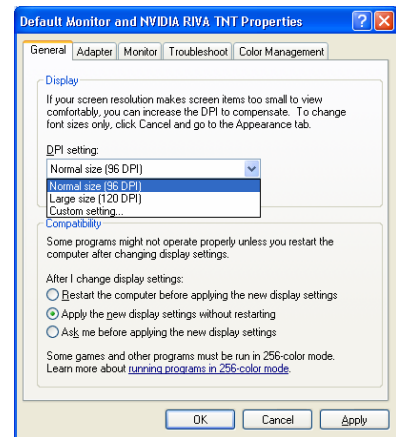


Figure 4. Advanced Properties window, General tab

2. Click the **Settings** tab and then click **Advanced**.
3. Select **Normal size (96 DPI)** or **Small Fonts** from the DPI setting list.
4. Click **OK** and restart your computer.
5. Run G-Ware or AP-Ware. The screen will now display correctly.