

APV200-IP



Audio Perfect® Video 200-IP

Installation & Operations Manual

Gentner

Perfect Communication through Technology, Service, and Education.™

APV200-IP Installation and Operations Manual
Gentner Part No. 800-160-103
November 1999 (Rev. 1.0)

©1999 by Gentner Communications Corporation. All rights reserved. No part of this manual may be reproduced in any form or by any means without written permission from Gentner Communications Corporation. Printed in the United States of America. Gentner Communications Corporation reserves specification privileges. Information in this manual is subject to change without notice.

This equipment complies with the requirements of the EU guidelines:



89/336/EEC "Electromagnetic Compatibility"

73/23/EEC "Electrical operating material for use within specific voltage limits"

Conformity of the equipment with the above guidelines is attested by the CE mark.

T able of Contents

1. Introduction	.5
2. Installation	.7
Getting Started	7
Scratch Sheet	8
Connecting the APV200-IP	10
3. Setup	.13
The Setup Genie	13
4. Operation	.21
Operating the APV200-IP	21
Remote Control Functions	26
Volume Controls	26
Muting Microphone	26
Picture in Picture	26
Switching Between Cameras	26
Local and Remote Camera Control	26
Camera Presets	26
Selecting a Stored Preset	27
Working with Still Images	27
Optional IR Remote Pick-up	27
Main Menu Configuration	28
Main Menu	28
Manual Dial	29
Redial Menu	31
Redial	31
Speed Dial Menu	31
Speed Dials	31
Edit List	32
Speed Dial List	32
Phonebook Menu	33
Phonebook	33
Phonebook (1)	33
New Entry	34
Rename	34
Name Entry	35
Call Type	36

Prefix	36
Channel 1 and Channel 2	36
Clear	37
Take Picture	37
Delete Picture	37
Information Menu	38
Information	38
Quickstart	38
Company Information	39
APV200-IP Information	39
Configure Menu	40
Configure	40
Audio	41
Video	47
ISDN	50
Data Ports	53
Advanced	58
Ethernet/IP	62

5. Specifications65

Table of Figures

Figure 1. Connection Diagram	9
Figure 2. AP400/APV200-IP Connection Diagram	11
Figure 3. Remote Control Functions	12
Figure 4. Language Screen	13
Figure 5. Welcome Screen	13
Figure 6. Video Input Screen	14
Figure 7. Video Output Screen	14
Figure 8. V.35 Dial Type Screen	15
Figure 9. Network Type Screen	15
Figure 10. Switch Vendor Screen	16
Figure 11. Local Phone Numbers Screen	16
Figure 12. Service Provider ID Screen	17
Figure 13. Camera Port Screen	17
Figure 14. IP Address Method Screen	18
Figure 15. IP Address Screen	18
Figure 16. IP Subnet Mask Screen	19
Figure 17. Default IP Gateway Screen	19
Figure 18. Setup Complete Screen	20
Figure 19. Main Menu Screen	21
Figure 20. Manual Dial Screen	22
Figure 21. Connection Status Screen	22
Figure 22. Speed Dials Screen	23
Figure 23. Phonebook Screen	23
Figure 24. Main Menu Screen	24

Figure 25. Information Screen24

Figure 26. Remote Control Screen 125

Figure 27. Remote Control Screen 225

Figure 28. Gentner Information Screen25

Figure 29. Remote Control Functions27

Figure 30. Main Menu Screen28

Figure 31. Manual Dial Screen29

Figure 32. Manual Dial Screen30

Figure 33. Main Menu Screen31

Figure 34. Main Menu Screen31

Figure 35. Speed Dials Screen32

Figure 36. Speed Dial List Screen32

Figure 37. Phonebook 1 Screen33

Figure 38. New Entry Screen34

Figure 39. Name Entry Screen35

Figure 40. Call Type Screen36

Figure 41. Information Screen38

Figure 42. Information Screen39

Figure 43. Information Screen39

Figure 44. Configure Screen40

Figure 45. Audio Screen41

Figure 46. Advanced Audio Screen43

Figure 47. Echo Cancel Screen45

Figure 48 Video Screen47

Figure 49. Network Screen50

Figure 50. Line 2 Settings Screen51

Figure 51. Configure Screen53

Figure 52. Data Ports Screen53

Figure 53. Camera Port Screen53

Figure 54. Configure Screen58

Figure 55. Advanced Screen59

Figure 56. Configure Screen62

Figure 57. Ethernet/IP Screen63

1 Introduction

Introducing the APV200-IP

Congratulations

Congratulations on your purchase of the Gentner Audio Perfect Video 200-Internet Protocol (APV200-IP) videoconferencing codec. You have purchased either the V.35, U, or S/T version. The APV200-IP is designed to communicate directly with any industry-compliant videoconferencing system to deliver a superior audio and video experience.

This Installation and Operations Manual is designed to help you configure and operate your APV200-IP and use the full range of options for making and receiving conference calls.

Call for your free test video setup call. We want to ensure your APV200-IP is set up properly. Call Gentner Communications at 1.800.283.5936 (USA) or 1.801.974.3760.

Call for your free Video 101 training. Video 101 helps new users become familiar with the APV200-IP and make successful videoconferencing calls. In addition to Video 101, Gentner offers a wide range of video presentation training, and can customize training to fit the needs of your employees.

To schedule your training session, call Gentner's Professional Services Group at 1.800.945.7730 (USA) or 1.801.975.7200. If you need additional assistance on how to install, set up, or operate your APV200-IP, please contact Gentner's Technical Service at 1.800.283.5936 (USA) or 1.801.974.3760. We will gladly assist you.

2 Installation

Getting Started

Before You Begin

Before installing your new APV200-IP, inspect it for damage. If any is noticed, call Gentner Technical Support Center to request a Return Material Authorization (RMA) number. All returns must be packed in their original shipping containers and be properly marked and identified with an RMA number.

You must obtain a power cord from your local electrical parts supplier if you don't live in the US, UK, Switzerland, or Europe (CE).

Before setting up your equipment, you should have your ISDN line(s) established. Refer to the Scratch Sheet on page 8 for a list of the network configuration information you will need to get from the Information Systems person or network provider at your location.

Where Do I Start?

1. Carefully review these instructions before installation. Exercise every safety precaution to protect yourself and your investment.
2. Ensure you have a network connection and the appropriate network configuration information from your network provider. Refer to the connection diagram on page 9 to assemble your hardware. **If you have the U or S/T version, note the Uplink and 100M (100-megabyte data rate) indicator lamps on the back panel. The V.35 version features a data receptacle instead of indicator lamps.**
3. Familiarize yourself with the handheld Remote Control (see Figure 3) before you power on your APV200-IP and start your configuration setup.
4. If you are using a Gentner AP400 with your APV200-IP, review the AP400/APV200-IP connection diagram on page 11.

Scratch Sheet

ISDN Network Type (from ISDN service provider. U and S/T)

- N. ISDN 1 (US & Canada)
- Custom (US & Canada)
- NTT Japan (Japan)
- VN4 France (France)
- Australia (Micronet)
- ETSI (which is the same as NET 3 for Europe, Australians with On-ramp, and most Asian countries)

ISDN Switch Vendor (from ISDN service provider. U and S/T)

- AT&T (US & Canada)
- NorTel (US & Canada)
- Siemens (US & Canada)
- Unknown (all other countries)

ISDN Lines

Line	Channel	Number	SPID
1	1	_____	_____
1	2	_____	_____
2	1	_____	_____
2	2	_____	_____
3	1	_____	_____
3	2	_____	_____

or

V.35

- Leased Line
- RS-366
- DTR

IP Address

IP Subnet Mask

IP Default Gateway

After you have connected the APV200-IP, power it on as follows:

1. Turn power on for the camera.
2. Turn power on for the monitor and set the monitor to the video input.
3. Turn power on to the APV200-IP.

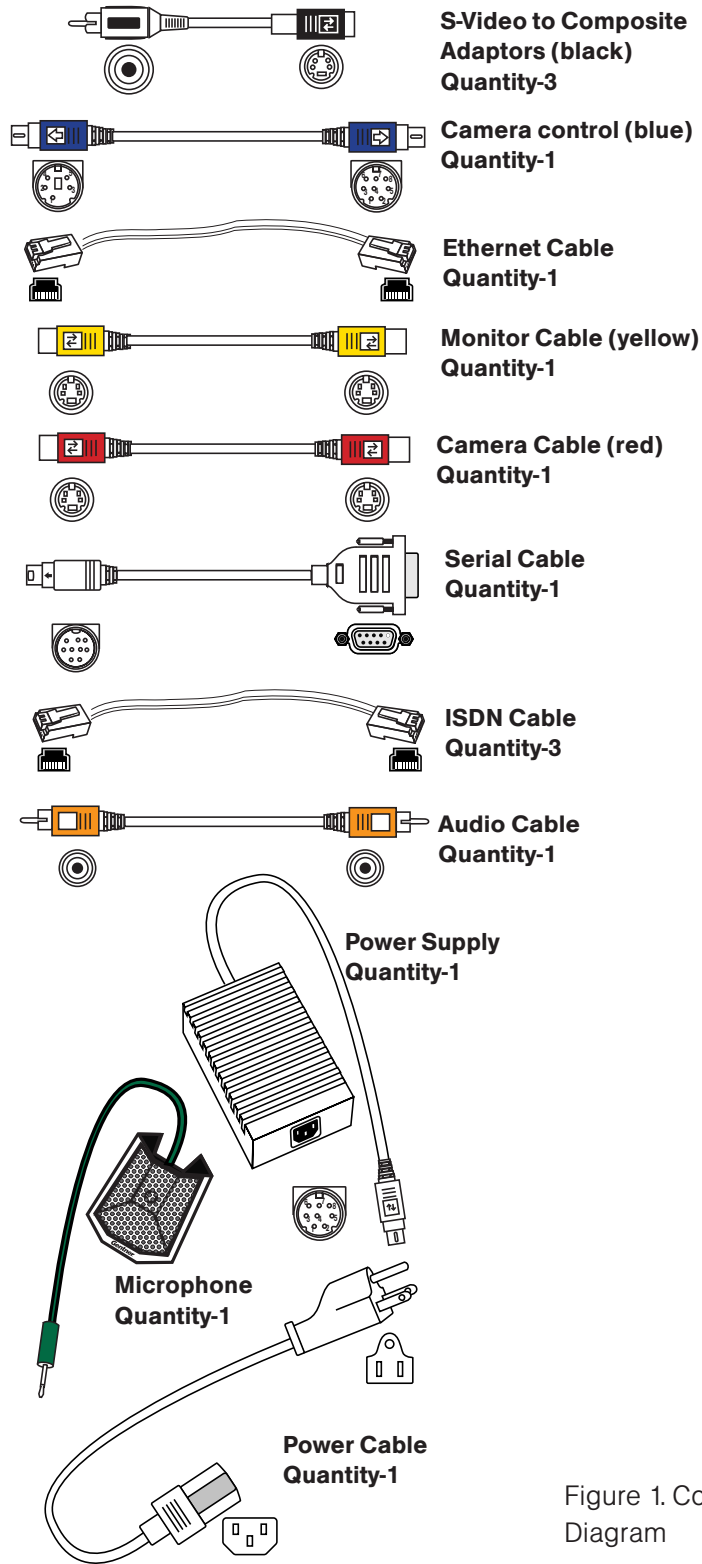
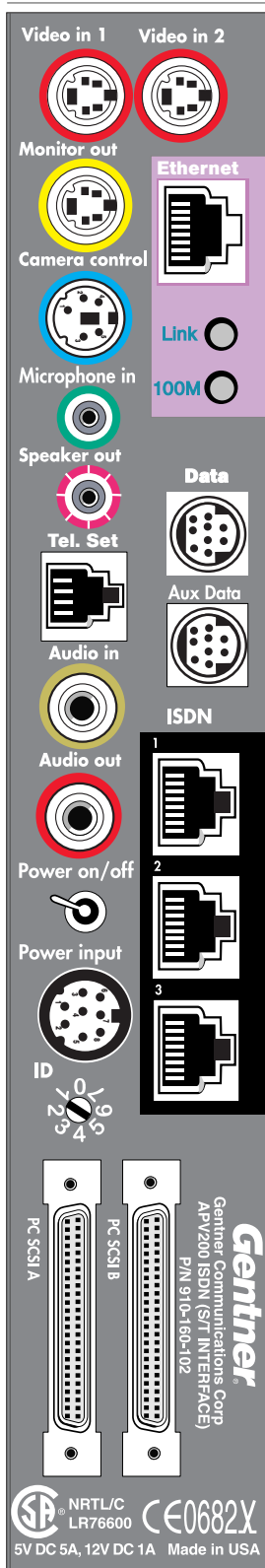


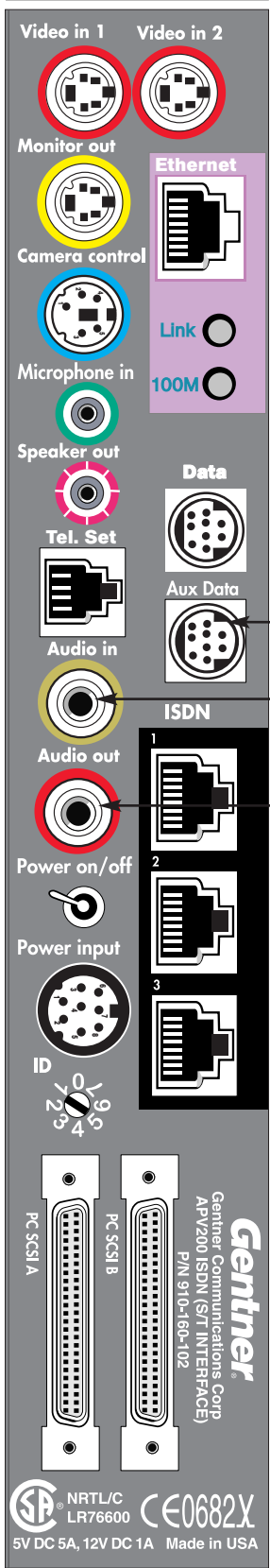
Figure 1. Connection Diagram

Connecting the APV200-IP

- 1** Connect one end of the red camera cable into the VIDEO IN 1 receptacle on the APV200-IP unit. Connect the other end to the VIDEO OUT receptacle on the back of your camera. If you have a second camera, connect it to the VIDEO IN 2 receptacle.
- 2** Connect one end of the yellow monitor cable to the MONITOR OUT receptacle on the back of the unit. Connect the other end to the VIDEO OUT receptacle on the back of your monitor or TV.
- 3** Plug one end of the blue camera control cable into the CAMERA CONTROL receptacle. Plug the other end into the VISCA IN or RS232 connector on the back of the camera.
- 4** Do one of the following:
 - ◆ If you are using the single microphone provided, plug it into the MICROPHONE IN receptacle on the back of the APV200-IP unit.
 - ◆ If you are using the Gentner AP400 audio system, follow the instructions included with that system for plugging in microphones to that system. Plug a cable from OUTPUT A of the AP400 into the AUDIO IN receptacle on the APV200-IP.
- 5** Do one of the following:
 - ◆ If you are using the speakers in your video monitor, connect the monitor's AUDIO IN to the AUDIO OUT jack on the back of the APV200-IP unit.
 - ◆ If you are using the Gentner AP400, follow the instructions included with that system for plugging in speakers. Plug a cable from INPUT A of the AP400 into the AUDIO OUT jack on the APV200-IP unit.
- 6** For the U and S/T versions, connect the first ISDN RJ-45 cable to an ISDN receptacle on the back of the APV200-IP unit; plug the other end into an ISDN wall jack. Repeat this step for ISDN lines 2 and 3. For the V.35 version, connect the appropriate V.35 cable.
- 7** If you are using an AP400, connect that unit's serial cable to the APV200-IP's AUX DATA receptacle; plug the other end of the serial cable into the RS232 jack on the AP400.
- 8** Plug the power supply box into the POWER INPUT receptacle on the back of the APV200-IP unit.
- 9** Plug one end of the power cord to the power supply box; plug the other end of the power cord to a surge protector that is, in turn, plugged into a grounded outlet.



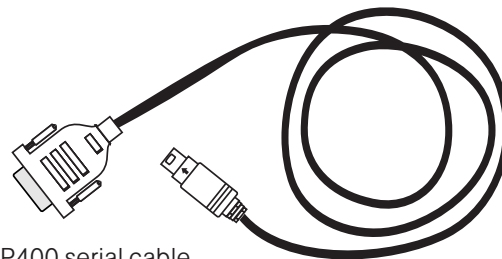
WARNING: The surge protector must be connected to a grounded outlet ONLY.



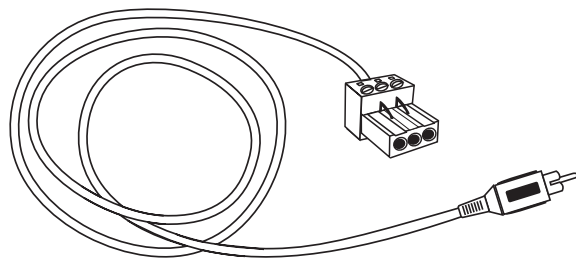
The Microphone In and Speaker Out connectors of the APV200-IP cannot be used with an AP400. If you previously made these connections, you must remove them.

- Aux Data Connect the AP400 serial cable in here and the other end into the Aux Data jack on the AP400.
- Audio In Connect an AP400 audio cable in here and the other end into the Output A of the AP400.
- Audio Out Connect an AP audio cable in here and the other end into the Input A of the AP400.

(Not included with APV200-IP.)



AP400 serial cable
Quantity-1



AP400 audio cable
Quantity-2

Figure 2. AP400/APV200-IP Connection Diagram

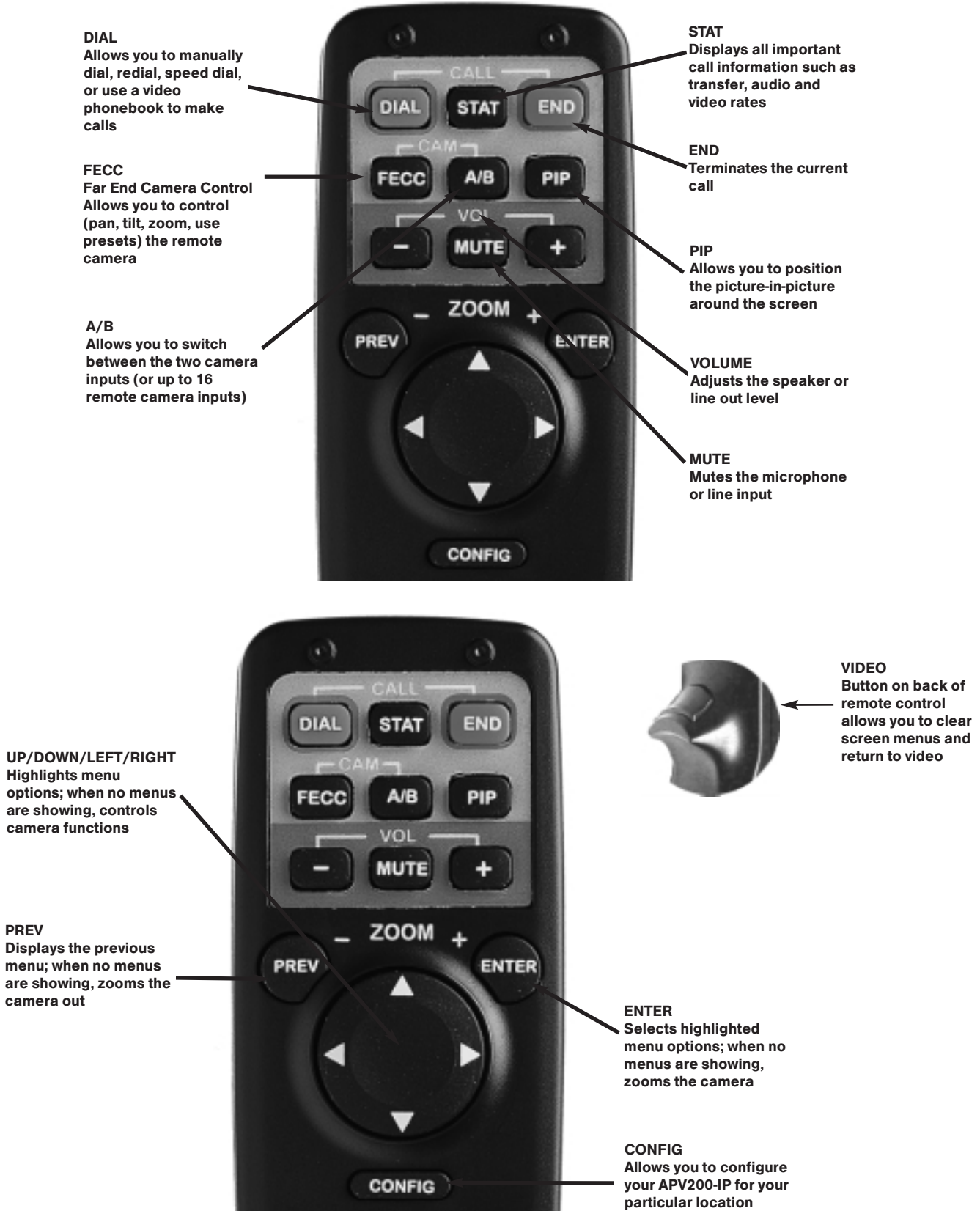


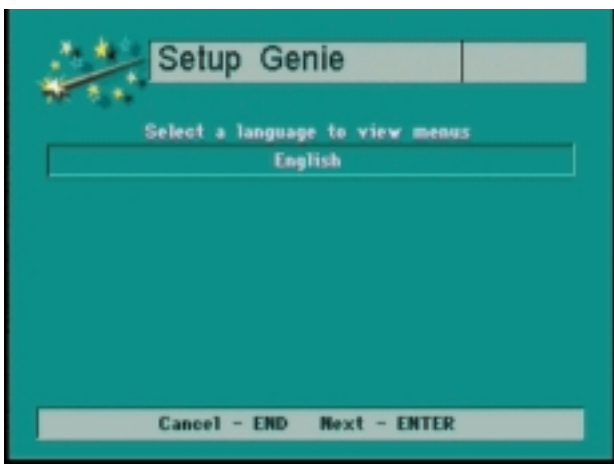
Figure 3. Remote Control Functions

3 Setup

Setup Genie

The Setup Genie

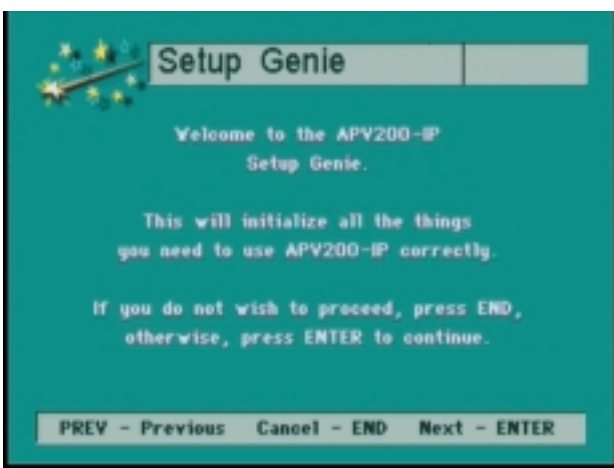
After initial power on and boot up, you will enter the Setup Genie. Follow all instructions carefully. You can make your desired selection by using the **UP/DOWN** buttons or pressing the number indicated on the remote control.



All Versions

Figure 4. Language Screen

Step 1. Using the remote control, select English, then press **ENTER**. English is the only language option available at this writing. The Welcome Screen (Figure 5) appears.



All Versions

Figure 5. Welcome Screen

Step 2. Press **ENTER** to continue. The Video Input screen (Figure 6) appears.

All Versions



Figure 6. Video Input Screen

Step 3. Press the **UP/DOWN** arrow buttons to select the type of video signal your primary input device (such as a camera or VCR) will provide. Press **ENTER** to continue. The Video Output screen (Figure 7) appears.

All Versions

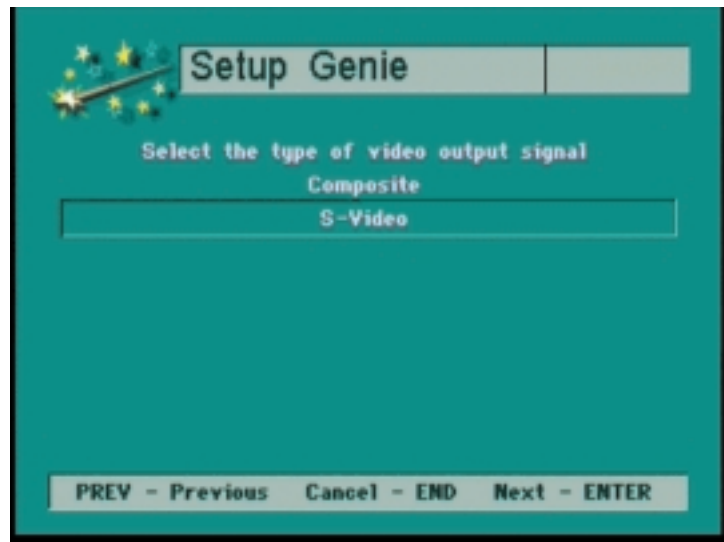
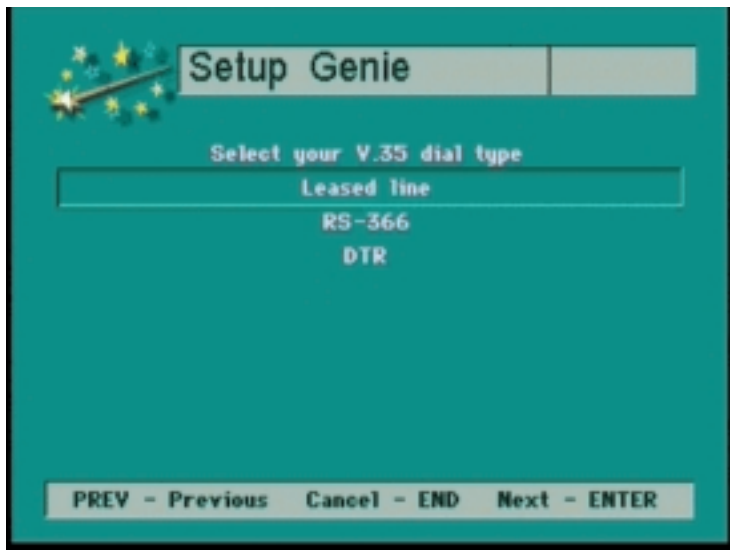


Figure 7. Video Output Screen

Step 4. Press the **UP/DOWN** arrow buttons to select a primary type of output signal, then Press **ENTER** to continue.

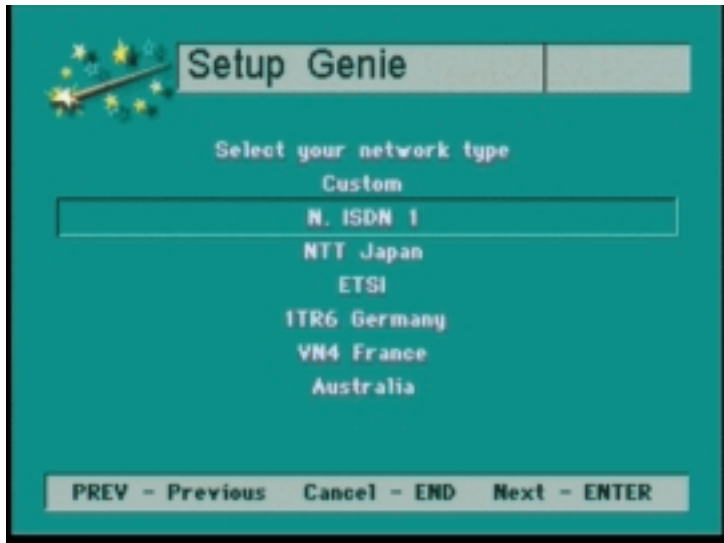
- ◆ If your facility uses the V.35 network protocol, the V.35 Dial Type screen (Figure 8) appears.
- ◆ If your facility uses the U or S/T protocol, the Network Type screen (Figure 9) appears.



V.35 Only

Figure 8. V.35 Dial Type Screen

Step 5. Press the **UP/DOWN** arrow buttons to select a dial type for the V.35 network protocol, then press **ENTER**. If you have the V.35 version, the Camera Port screen (Figure 13) appears (skip to Step 10 to continue Setup Genie).



U and S/T Only

Figure 9. Network Type Screen

Step 6. Press the **UP/DOWN** arrow buttons to select the type of network at your location, then press **ENTER**. The Switch Vendor screen (Figure 10) appears.

U and S/T Only

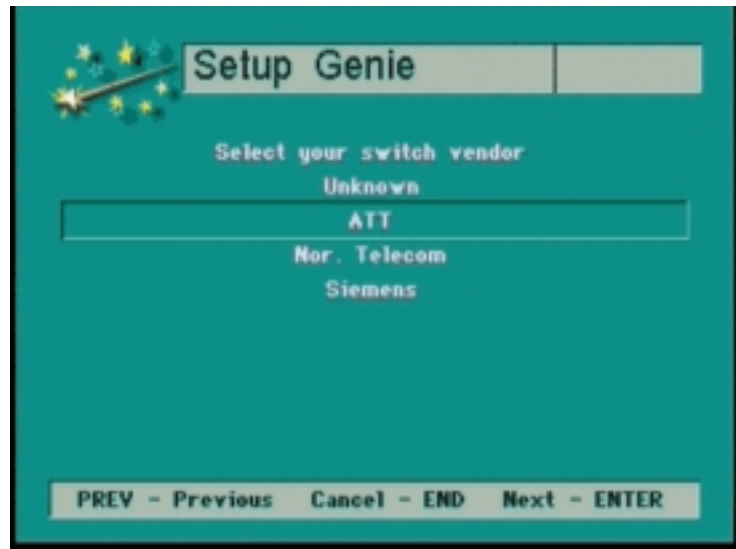


Figure 10. Switch Vendor Screen

Step 7. Press the **UP/DOWN** arrow buttons to select the telephone switch used at your location, then press **ENTER**.

The Local Phone Numbers screen (Figure 11) appears.

U and S/T Only

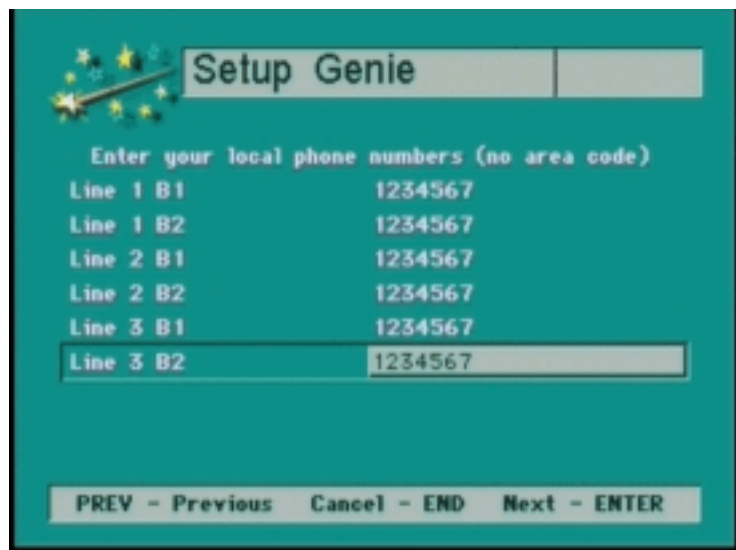
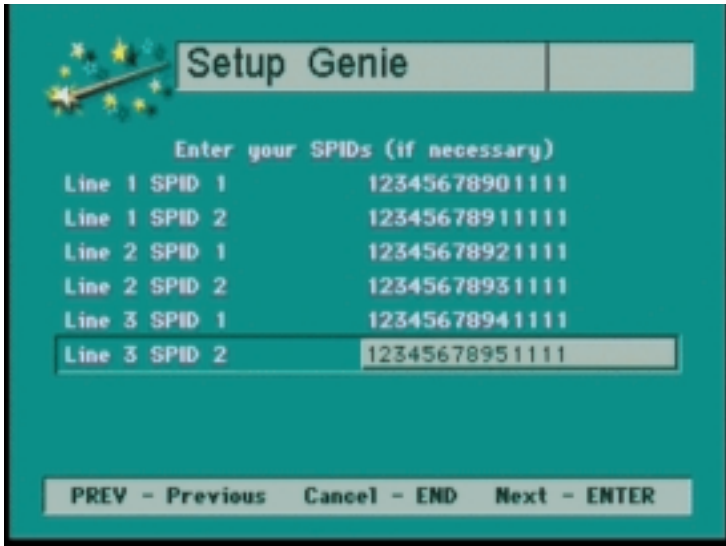


Figure 11. Local Phone Numbers Screen

Step 8. Press the **UP/DOWN** arrow buttons to highlight the first row, then press the number buttons to enter the first telephone number for Line 1. You do not need to enter an access number, area code, or hyphen. If you make any errors while entering the number, press the **LEFT** arrow button to backspace and make corrections. When you are finished entering the first number, press the **DOWN** arrow button and enter the second number for Line 1.

Repeat this step if your facility uses more than one line. When you have entered all the numbers, press **ENTER**.

The Service Provider ID screen (Figure 12) appears.



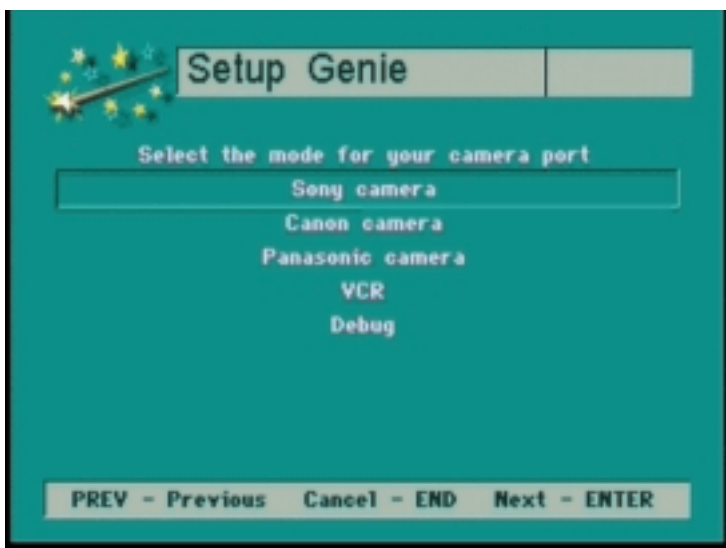
U and S/T Only

Figure 12. Service Provider ID Screen

Step 9. Press the **UP/DOWN** arrow buttons to highlight the first row, then press the **NUMBER** buttons to enter the first Service Provider ID (SPID) for Line 1.

When you are finished entering the first SPID number, press the **DOWN** arrow button and enter the second SPID number for Line 1. Repeat this step if your facility uses more than one line. When you have entered all the SPID numbers, press **ENTER**.

The Camera Port screen (Figure 13) appears.



All Versions

Figure 13. Camera Port Screen

Step 10. Press the **UP/DOWN** arrow buttons to select the type of camera you are using, then press **ENTER**.

The IP Address Method screen (Figure 14) appears.

All Versions

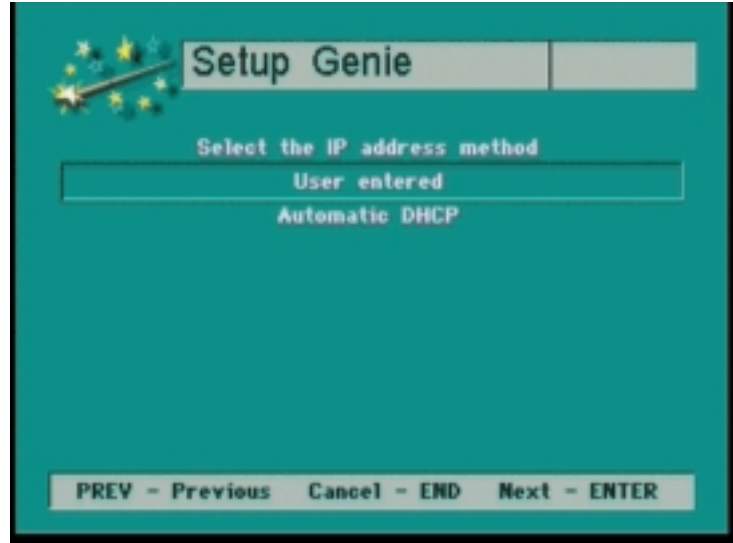


Figure 14. IP Address Method Screen

Step 11. Choose a method for specifying your IP address to the APV200-IP system, then press **ENTER**. If you choose User Entered, you must specify additional IP information, which appears following this screen.

If you choose Automatic DHCP, the system automatically gathers the IP information it needs. The Setup Complete screen (Figure 18) appears.

All Versions

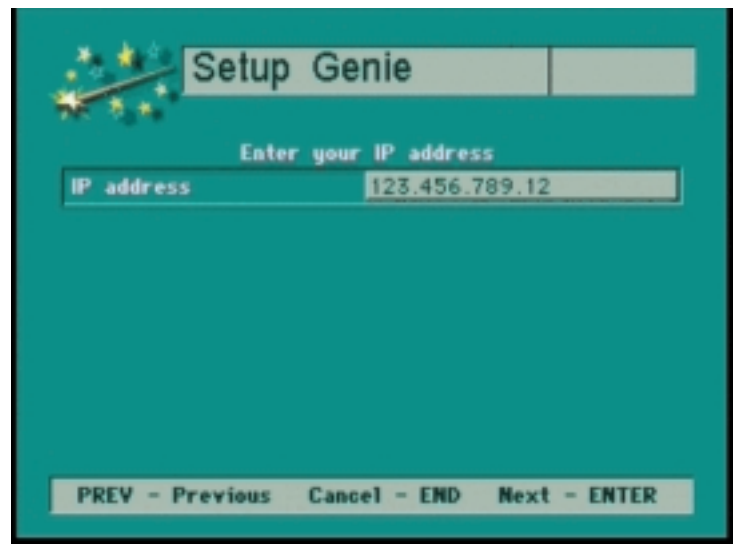
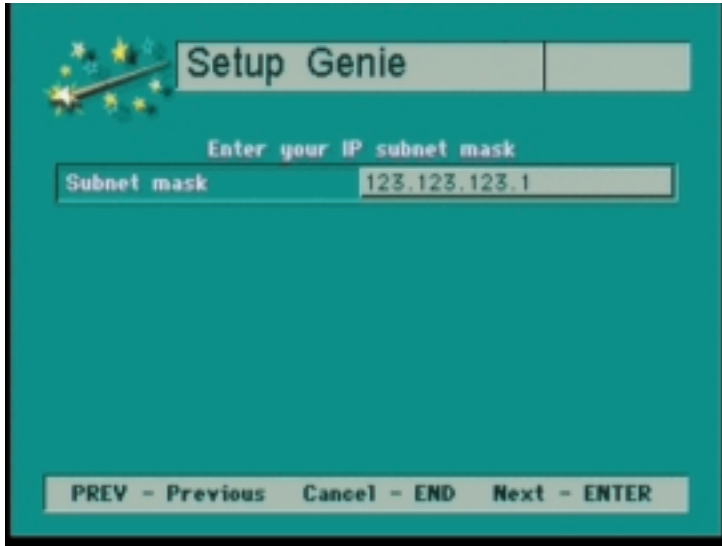


Figure 15. IP Address Screen

Step 12. Use the **NUMBER** buttons on the remote control to enter an IP address for your particular location. Use the **ASTERISK** button (*) to enter the periods (.). If you make a mistake entering, press the **LEFT** arrow to backspace, then re-enter the correct number. When you have entered your IP address, press **ENTER**.

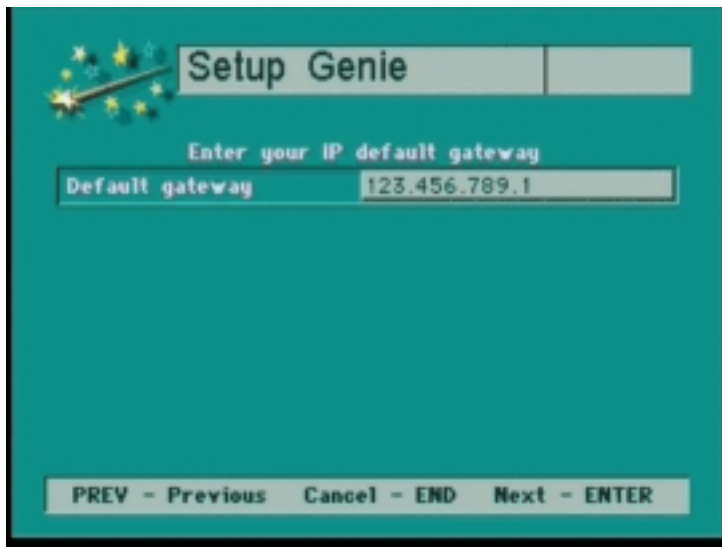
The IP Subnet Mask screen (Figure 16) appears.



All Versions

Figure 16. IP Subnet Mask Screen

Step 13. Use the **NUMBER** buttons and **ASTERISK (*)** button to enter an IP subnet mask for your particular location, then press **ENTER**. The Default IP Gateway screen (Figure 17) appears.



All Versions

Figure 17. Default IP Gateway Screen

Step 14. Use the **NUMBER** buttons and **ASTERISK (*)** button to enter a default gateway IP address for your particular location, then press **ENTER**. The Setup Complete screen (Figure 18) appears.

All Versions

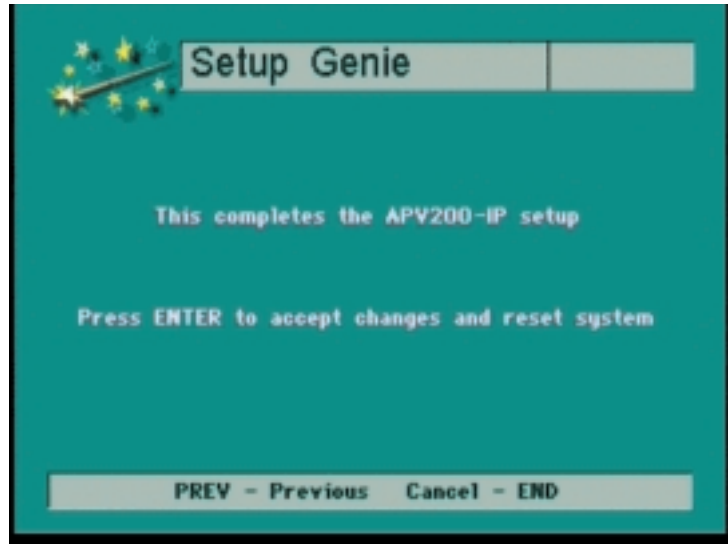


Figure 18. Setup Complete Screen

Step 15. Do one of the following:

◆ If you are satisfied that you have entered all configuration information correctly, press **ENTER**.

The system reboots itself in order for the configuration information to take effect. While the system is rebooting, the screen is blank. Rebooting might take up to two minutes. Following a successful reboot, the Gentner Splash screen appears, followed by the Screen Saver screen.

The configuration process is now complete and you are ready to place your first videoconference call.

◆ To review and/or modify the entered configuration information, press the **PREV** button until the screen information that you would like to review appears.

◆ To cancel the configuration process, press the **END** button.

Note: If you need to reconfigure the Setup Genie, press **CONFIG**, then select Advanced (option #5). Choose Security, then Redo Setup Genie. Press **PREV**, then reboot the system by powering off the unit, then on. The Language Screen (Figure 4) of the Setup Genie will appear. Proceed to reconfigure the Setup Genie.

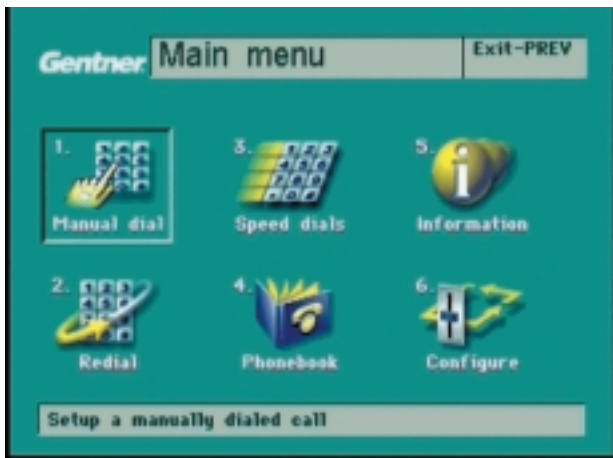
4 Operation

Operating the APV200-IP

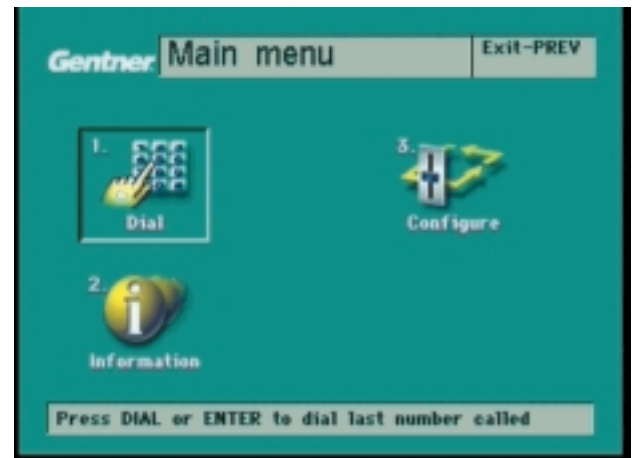
To initiate the process of placing a videoconference call, press the green **DIAL** button.

The MAIN MENU screen appears.

U and S/T Versions



V.35 Version



- 1** Use the **UP**, **DOWN**, **LEFT**, and **RIGHT** buttons to highlight the menu item you want, or press the number button associated with the menu item. Then do one of the following:
- 2** To manually enter the telephone number you want to call, select MANUAL DIAL (U, S/T) or DIAL (V.35). The MANUAL DIAL screen (Figure 20) appears (U, S/T). To re-call the immediately preceding telephone number (U, S/T), select REDIAL. The CONNECTION STATUS screen (Figure 21) appears.
To utilize the SPEED DIAL option, select SPEED DIAL. The SPEED DIAL screen (Figure 22) appears.
To look up a number in your personal phonebook, choose PHONEBOOK. The PHONEBOOK screen (Figure 23) appears.

Figure 19. Main Menu Screen

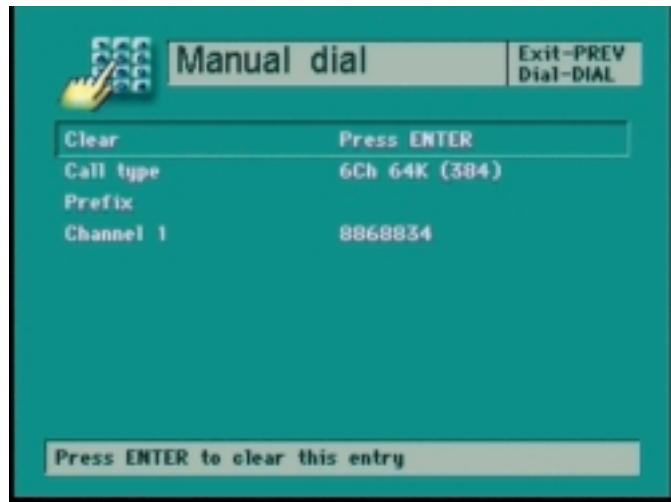


Figure 20. Manual Dial Screen

Manual Dial Instructions

- 1** Use the **DOWN** arrow button to highlight the Prefix field, then enter a prefix if one is required at your facility to access an outside line.
- 2** Use the **DOWN** arrow button to highlight the Telephone Number field, then use the **NUMBER** buttons to enter the phone number of the remote site you want to call. You do not need to enter a hyphen.
- 3** If you are using more than one line, press the **DOWN** arrow to highlight those fields, then use the **NUMBER** buttons to enter the phone numbers. For a BONDED call, only Line 1 is required.
- 4** Press the **DIAL** button to place the call.
The CONNECTION STATUS screen (Figure 21) appears, displaying a progress indicator for each telephone number. The indicator lights change from red to yellow to green as each number connects.
When all the numbers have connected, the appropriate camera



Figure 21. Connection Status Screen



Figure 22. Speed Dials Screen

Using Speed Dial

Use the **UP**, **DOWN**, **LEFT**, and **RIGHT** buttons to highlight the facility or person you want to call, or press the number button associated with the person or facility, then press **ENTER**.

The CONNECTION STATUS screen (Figure 21) appears.

You can store up to five entities and their associated pictures on the SPEED DIALS screen.

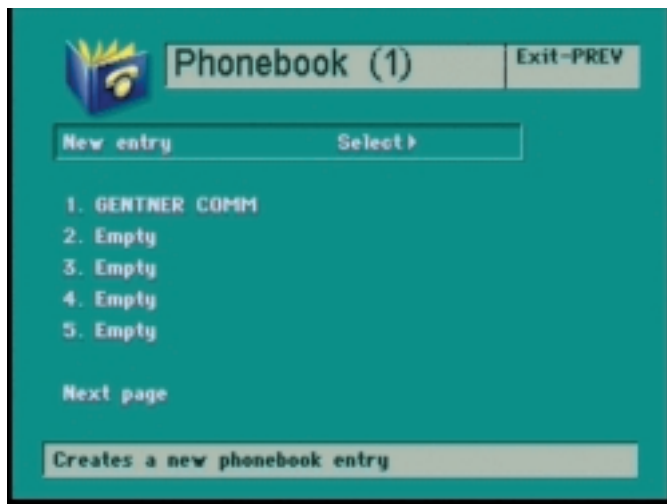


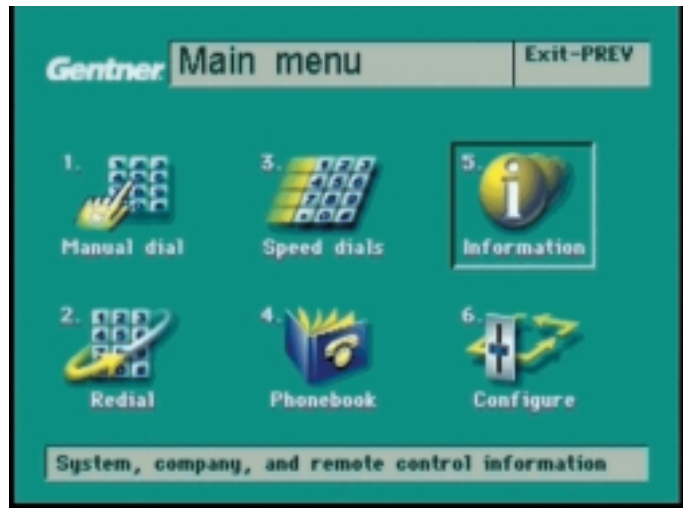
Figure 23. Phonebook Screen

Using the Phonebook

Use the **UP**, **DOWN**, **LEFT**, and **RIGHT** buttons to highlight the person or facility you want to call, or press the number button associated with the facility or person, then press **ENTER**. The system displays the selected entity's phone number. You can then use the MANUAL DIAL screen to place the call.

You can store up to five entities per phonebook page and the APV200-IP system stores up to 10 phonebook pages, allowing you to keep up to 50 entries in your phonebook.

Figure 24. Main Menu Screen

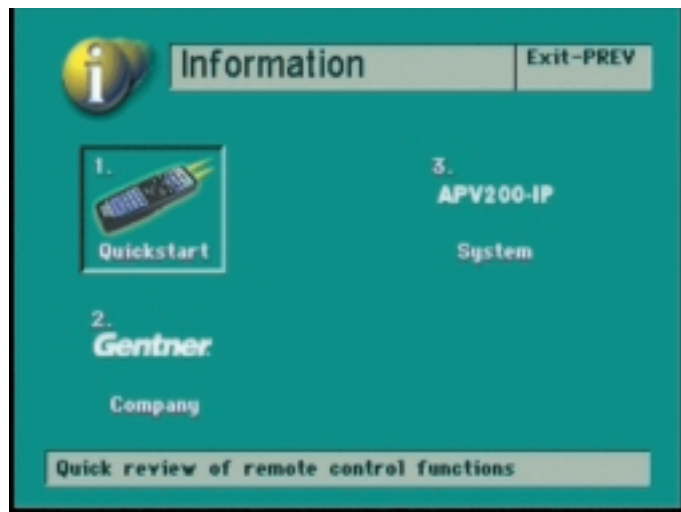


Getting Online Information

You can access online information from the APV200-IP system through the MAIN MENU screen. Use the **UP**, **DOWN**, **LEFT**, and **RIGHT** buttons or press the **NUMBER 5** button to select the Information menu item.

The INFORMATION screen (Figure 25) appears.

Figure 25. Information Screen



Do one of the following:

- ◆ To get information on operating the remote control, select option 1.

REMOTE CONTROL Screen 1 (Figure 26) appears.

- ◆ To get Gentner's Website URL or technical support telephone number, select option 2.

The GENTNER INFORMATION screen (Figure 28) appears.

- ◆ To get a software version number or serial number for your APV200-IP system, select option 3.

The APV200-IP INFORMATION screen appears.

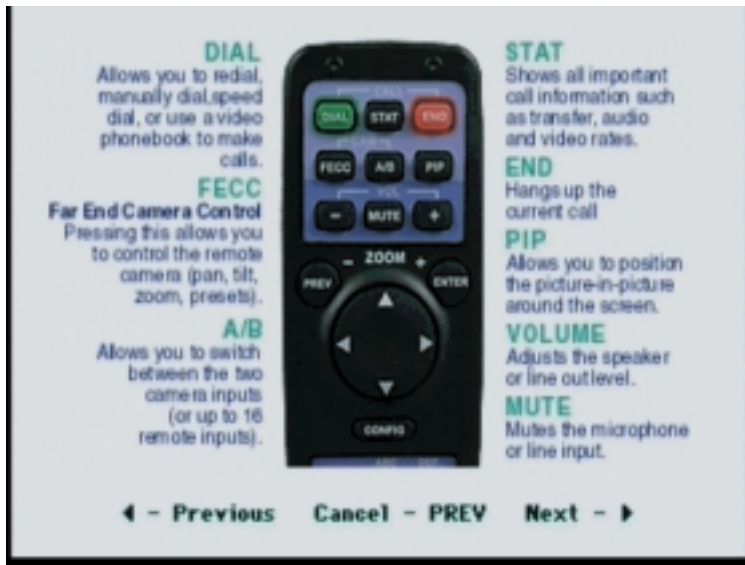


Figure 26. Remote Control Screen 1

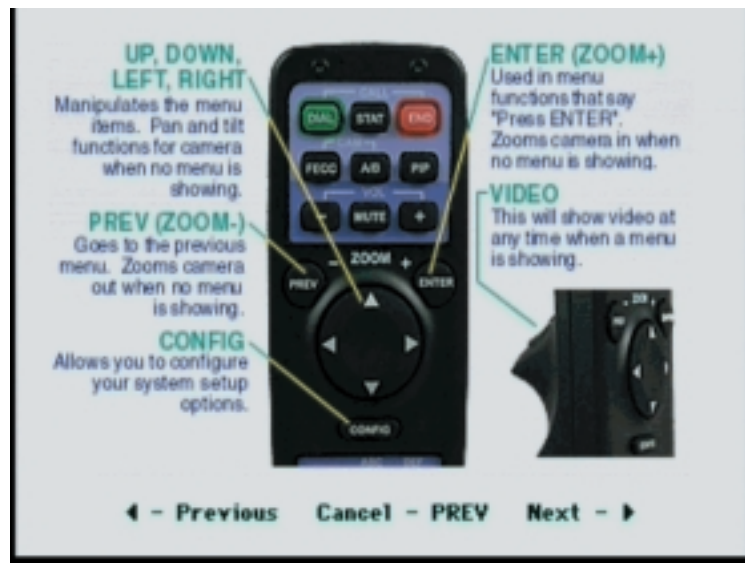


Figure 27. Remote Control Screen 2

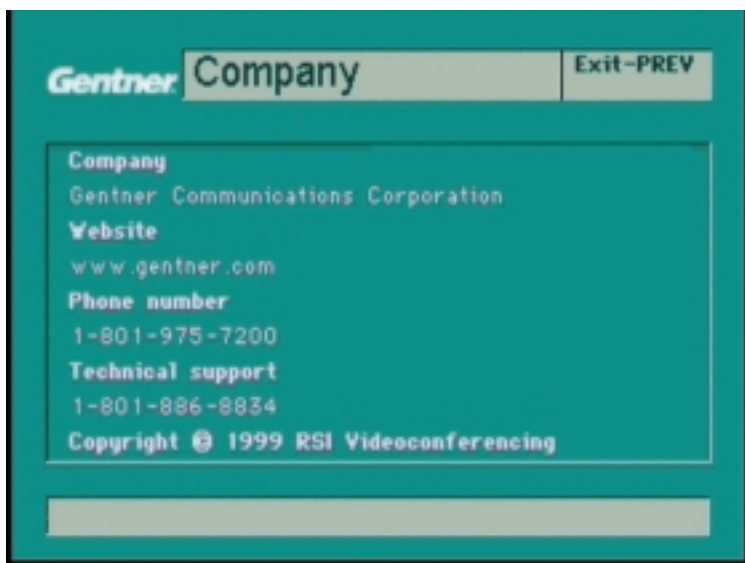


Figure 28. Gentner Information Screen

Remote Control Functions

Volume Controls

Press **VOL+** to increase the volume; Press **VOL-** to decrease it.

Muting Microphone

Press **MUTE** to mute the microphone; press **MUTE** again to unmute it.

Picture in Picture (PIP)

Pressing the **PIP** button moves the PIP to one of the following:

Four corners of screen—one at a time

Full screen—showing local video

Off—showing remote image full screen

Switching Between Two Local Cameras

Two cameras must be connected to the VIDEO INPUT jacks. Pressing the **A/B** button toggles the video input between the two cameras.

Switching Between a Local Camera and Far End Camera

Pressing the **FECC** button toggles between the two cameras.

Local and Remote Camera Control

Below are instructions to set up local camera control. If you call and connect to another videoconferencing system, you might be able to control its camera as well.

To control the local camera (your camera), press:

UP to tilt up.

DOWN to tilt down.

LEFT to pan left.

RIGHT to pan right.

PREV to zoom out.

ENTER to zoom in.

To control the remote camera, press **FECC** on the remote control. A far camera icon will appear on your screen. Use the **UP**, **DOWN**, **LEFT**, and **RIGHT** buttons to tilt and pan the camera. Use the **ENTER** and **PREV** to zoom in and out.

Camera Presets

Presets can be set for both the local or remote cameras. The local presets will be saved if you lose power to the APV200-IP. The remote presets will be lost when the call is terminated.

To store a local camera preset, position the camera on an image you want to save. Using the remote, press and hold the number you want to store. The status bar will appear with a "Preset Stored" message.

To store a remote camera preset, press **FECC**. A far camera icon will appear on your screen. Position the camera on an image you would like



NOTE: If you are unable to control a remote camera, it is possible that the person you are calling does not allow a remote caller to control their camera.

to save. Using the number pad, press and hold the number you want to store. The status bar will appear with a "Preset Stored" message. Remote presets are only stored until the call is terminated.

Selecting a Stored Preset

Press and release the **NUMBER** key of a stored preset position.

Working with Still Images

The APV200-IP can create still images of video—such as of a document or whiteboard—which you can display on-screen whenever you want during a videoconference call.

To create a still image, position either the local camera or far end camera on the desired object, then press the **TAKE** button. This freezes the image on the screen. To return to live video, press the **VIDEO TRIGGER** button. Pressing the **SHOW** button brings back the still image.

Optional IR Remote Pick-up

The Optional Remote IR Pick-Up connects to the APV200-IP and allows you to place the APV200-IP out of sight (there must be a clear view between the remote control and the Remote IR).



NOTE: A still image is erased from memory when you activate a menu or press a function key other than **TAKE**, **SHOW**, or **VIDEO TRIGGER**.



NOTE: When you create a still image on a local camera during a videoconference call, the still image is displayed on-screen at the remote location.



Figure 29. Remote Control Functions

Main Menu Configuration

Main Menu

To enter the Main Menu, push the **DIAL** button on the remote control.

Once you have entered the Main Menu, you can select:

1. **Manual Dial** – Enter the information required to place a new call.
2. **Redial** – Redial the previous call.
3. **Speed Dials** – Select a speed dial number or edit the speed dial list.
4. **Phonebook** – Create, edit, or dial phonebook entries.
5. **Information** - Select Quickstart, Gentner Company, or APV200-IP System.
6. **Configure** – Configure the APV200-IP.

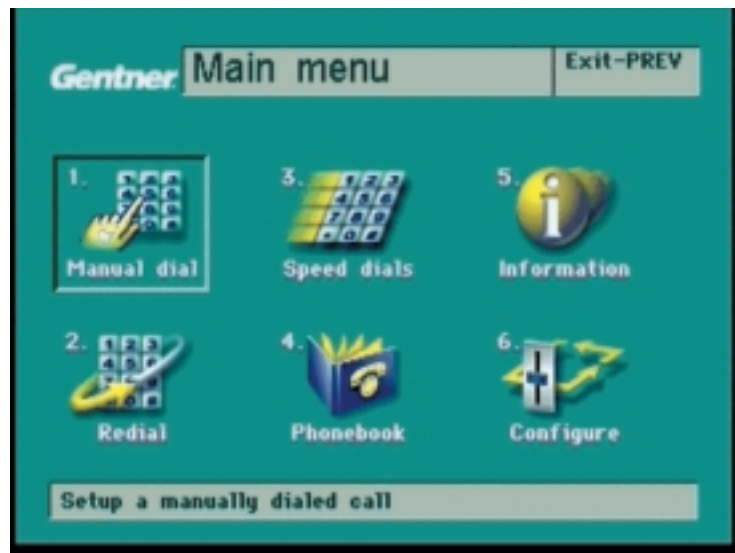


Figure 30. Main Menu Screen

You can make your desired selection by using the **UP/DOWN** buttons, followed by the **ENTER** button, or by pressing the number indicated on the remote control. **To exit this or any menu, push the PREV button on the remote control or pull the VIDEO TRIGGER button on the bottom of the remote control.**

Manual Dial Menu

Manual Dial

Clear – Selecting this option will clear all entries in this submenu and set Call Type to the default = **6Ch 64K (384)**.

Call Type – Scroll through this option to select your audio- or videoconference call type.

<u>BONDED calls</u>		<u>H.221 calls</u>
6Ch 64K (384K) (default)	3Ch 64K (192K)	2x64K
6Ch 56K (336K)	3Ch 56K (168K)	2x56K
5Ch 64K (320K)	2Ch 64K (128K)	
5Ch 56K (280K)	2Ch 56K (112K)	<u>Voice calls</u>
4Ch 64K (256K)	1Ch 64K (64K)	Telephone
4Ch 56K (224K)	1Ch 56K (56K)	

Prefix – Use for dialing international call prefixes, i.e. "011" or "9" for PBX systems.

Telephone – Use for dialing telephone calls.

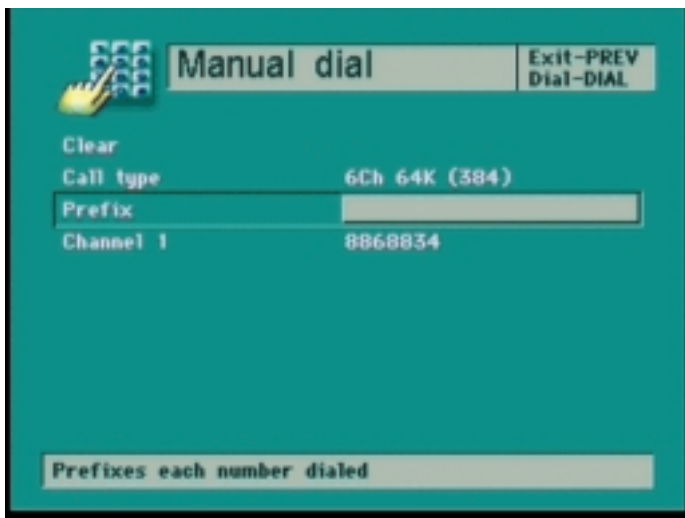


Figure 31. Manual Dial Screen

Channel 1 – Enter the ISDN number for the location you wish to call. Only one number is required for voice calls or BONDED video calls.

Channel 2 - Enter the second ISDN number for the location you wish to call if this is an H.221 video call. In some instances, this may be the same number as the Channel 1 number.

To terminate the call, press **END** on the remote control.

Performing an Interface Loopback

This configuration will verify the V.35 interface and the APV200-IP's functional operation.

Step 1. Select Manual Dial.

Step 2. Select the appropriate call type (for example: 6 channel BOND) in the Call Type submenu.

Step 3. Enter the string **##1 in the Prefix submenu.

Step 4. Press **DIAL**.

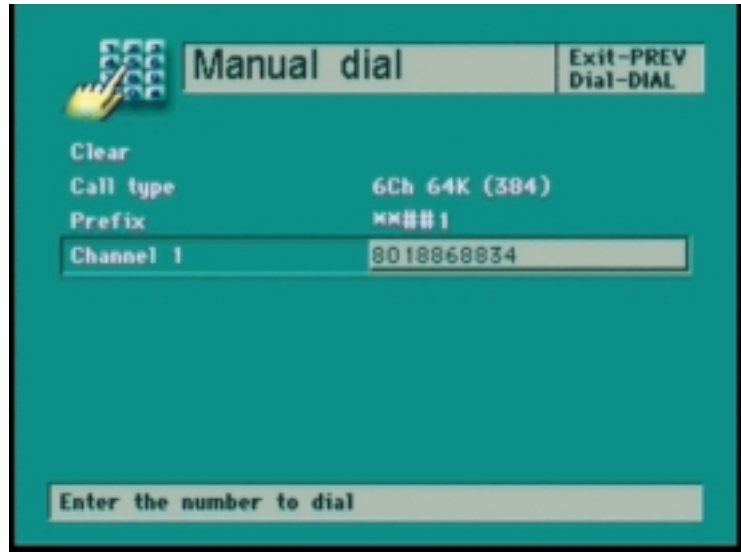


Figure 32. Manual Dial Screen

The APV200-IP will loop back the number of channels you have requested. Mute your microphone to avoid receiving your own audio. The loopback call will stay connected until terminated by pressing the **END** button.

A loopback call should not be used for demonstration purposes. This is only for testing the functionality of the APV200-IP.

Redial Menu

Redial

Select this icon and press **DIAL** or **ENTER** to redial the last number called. To terminate the call, press **END** on the remote control.

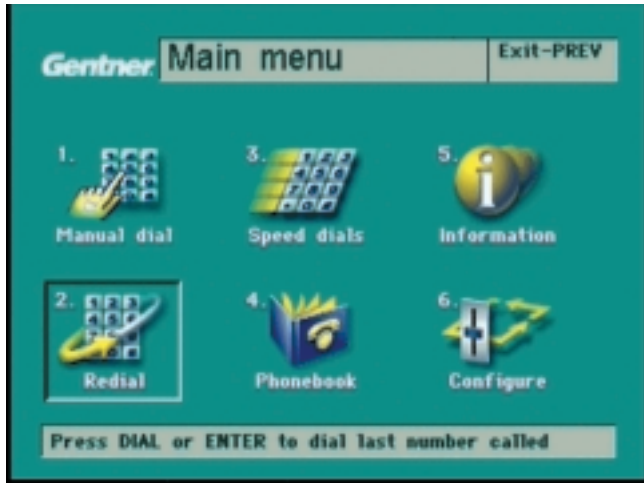


Figure 33. Main Menu Screen

Speed Dials Menu

Speed Dials

Select this icon to enter the SPEED DIALS selection menu. To use the SPEED DIALS or EDIT LIST, the dialing information must have previously been entered into the PHONEBOOK. If the PHONEBOOK entries have not been completed, exit this menu and select the PHONEBOOK menu.

Select the speed dial of your choice, then press **DIAL**. Press **END** on the remote control to terminate the call.

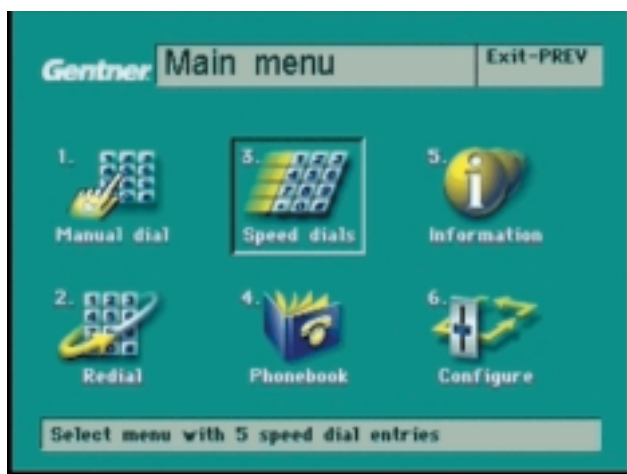


Figure 34. Main Menu Screen

Edit List

Select this icon to enter the SPEED DIAL LIST selection menu. Dialing information must have previously been entered into the PHONEBOOK. If the PHONEBOOK entries have not been completed, exit this menu and select the PHONEBOOK menu.



Figure 35. Speed Dials Screen

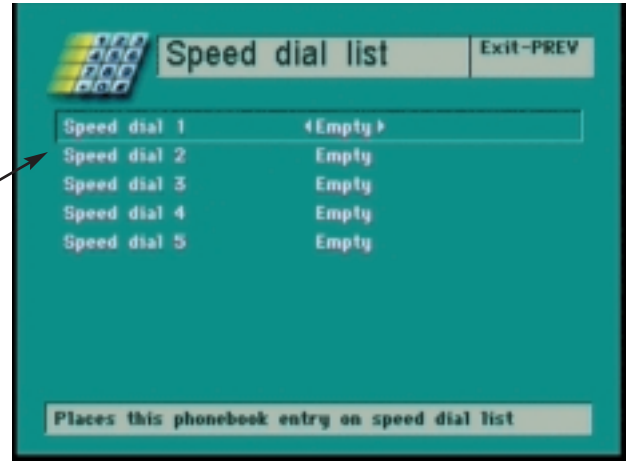


Figure 36. Speed Dial List Screen

Speed Dial List

Using the **UP/DOWN** buttons, scroll through the phonebook to the desired entry (1-5). Press the **PREV** button to confirm your selection.

Phonebook Menu

Phonebook

Select this icon to create new PHONEBOOK entries, edit your existing entries, or dial one of the entries in the PHONEBOOK.

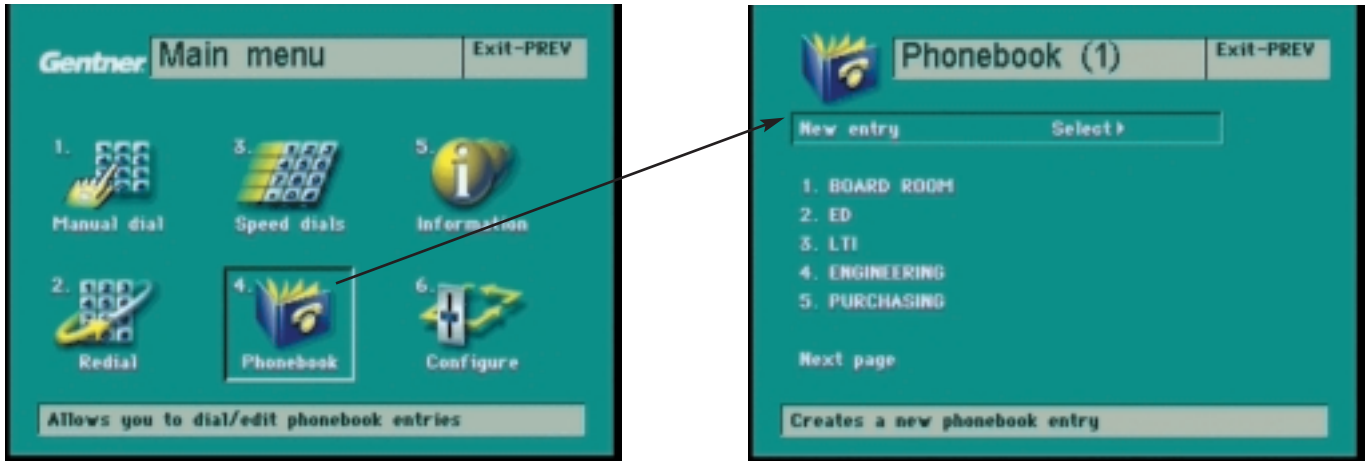


Figure 37. Phonebook (1) Screen

Phonebook (1)

Select this option to create a new PHONEBOOK entry or edit an existing entry. You may select Next Page to access additional entries or Previous Page to return to previous entries. Your page number will be indicated in parentheses () in the PHONEBOOK title bar at the top of the page.

New Entry

Select this option to create a new entry in the PHONEBOOK.

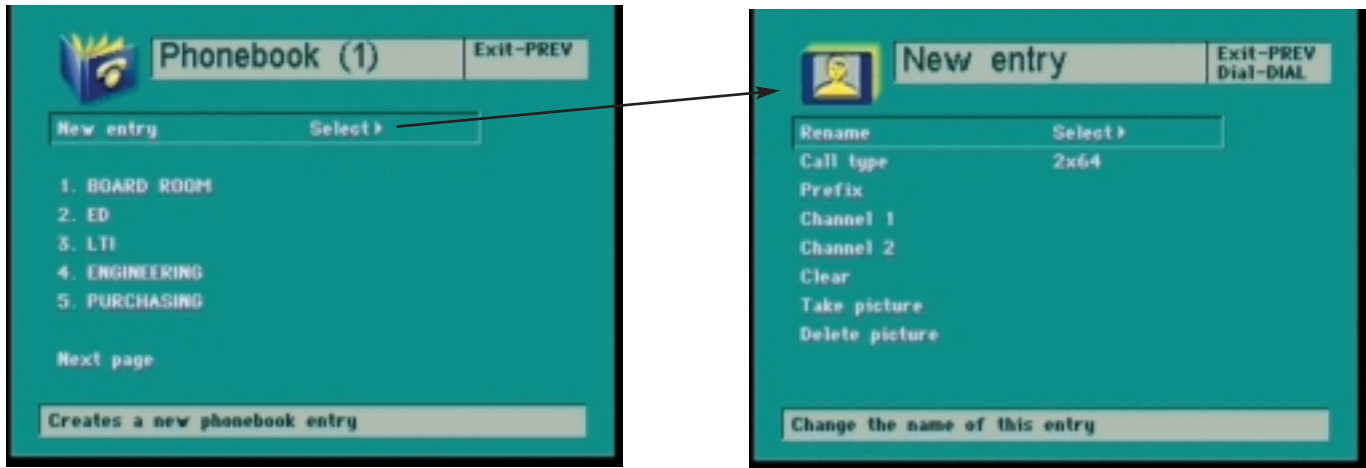


Figure 38. New Entry Screen

Rename

Select this option to enter a name for your PHONEBOOK entry or to rename an existing entry.

Name Entry

Using the **UP**, **DOWN**, **LEFT**, and **RIGHT** buttons, move the box to the letter you desire and press **ENTER** to make your selection. The letter you have selected will appear at the bottom of the screen above the information bar. To make a correction to the name, use the **UP** and **DOWN** buttons to highlight the name and use the **LEFT** button to erase. To exit this menu, press the **PREV** button.

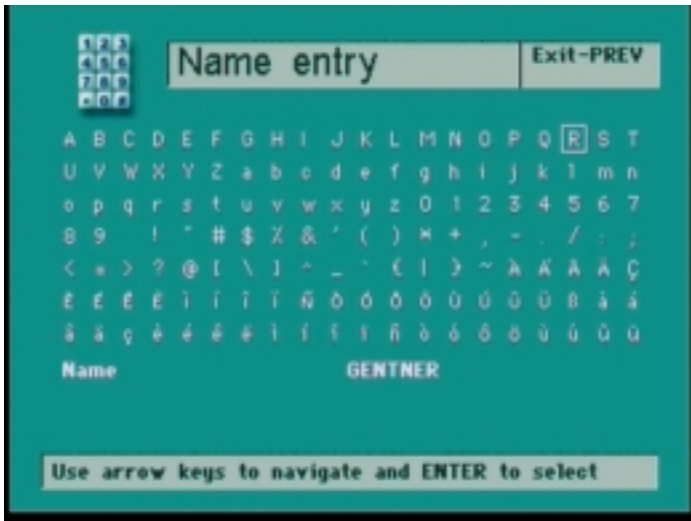


Figure 39. Name Entry Screen

Call Type

Scroll through this option to select your audio- or videoconference call type.

<u>BONDED calls</u>		<u>H.221 calls</u>
6Ch 64K (384K) default	3Ch 64K (192K)	2x64K
6Ch 56K (336K)	3Ch 56K (168K)	2x56K
5Ch 64K (320K)	2Ch 64K (128K)	
5Ch 56K (280K)	2Ch 56K (112K)	<u>Voice calls</u>
4Ch 64K (256K)	1Ch 64K (64K)	Voice
4Ch 56K (224K)	1Ch 56K (56K)	

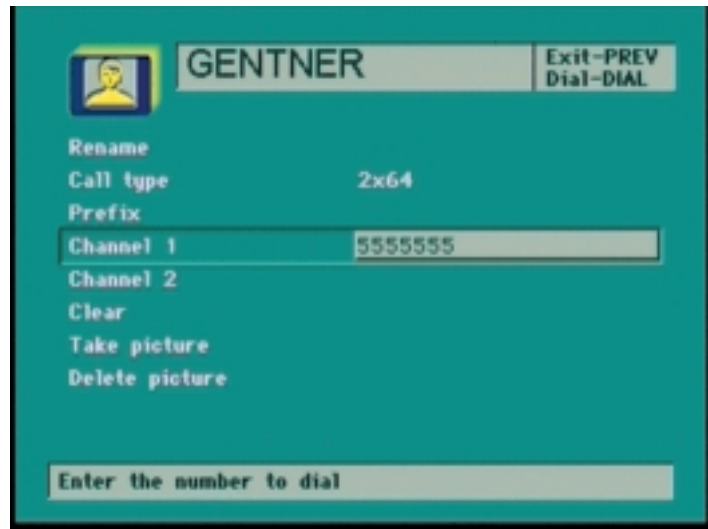


Figure 40. Call Type Screen

Prefix

Select this option to add a call prefix to the directory number you wish to dial. This prefix may be used for international calling prefixes (011), long distance access (1+), or PIC override codes (1010xxx).

Channel 1 & Channel 2

Channel 1 – Enter the ISDN number for the location you wish to call. Only one number is required for voice calls or BONDED video calls.

Channel 2 - Enter the second ISDN number for the location you wish to call if this is an H.221 videoconference call. In some instances, this may be the same number as the Channel 1 number.

Clear

Selecting this option will clear all entries in this submenu and set Call Type to the default =**6Ch 64K (384)**

Take Picture

Selecting this option will allow you to take a picture and store it in a PHONEBOOK entry, creating a picture phonebook. The picture may be taken either in local video or during a videoconference call. This picture will be displayed in the SPEED DIAL menu.

To take a picture during a videoconference call:

1. Center and zoom in on the subject.
2. Press the **DIAL** button.
3. Select the PHONEBOOK icon.
4. Select the desired PHONEBOOK entry.
5. Select Take Picture and press **ENTER**.
6. Press **ENTER** again within 10 seconds to take the picture.
7. Press the **VIDEO TRIGGER** button to return to the received video mode.

Delete Picture

Select this option and press **ENTER** to delete the current picture in this PHONEBOOK entry.

Information Menu

Information

Select this icon to access the remote control QUICKSTART menu, the APV200-IP SYSTEM INFORMATION menu, and the GENTNER COMMUNICATION CORPORATION INFORMATION menu.

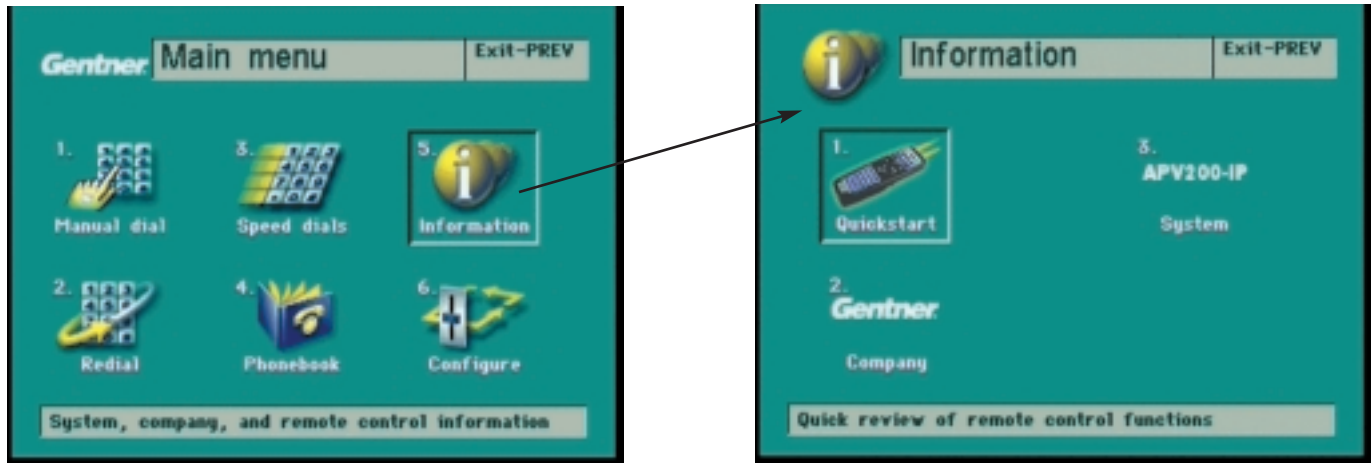


Figure 41. Information Screen

Quickstart

Select this icon to display a quick overview of the IR REMOTE CONTROL functionality.

Company

Select this icon to display company contact information for Gentner's Website, corporate office, and technical support.

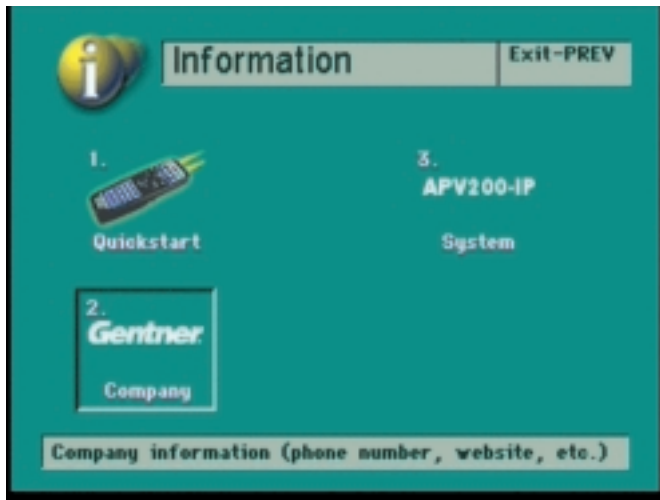


Figure 42. Information Screen

APV200-IP

Select this icon to display your system's serial number, current software version, and release date.



Figure 43. Information Screen

Configure Menu

Configure

Select this icon to configure or reconfigure the APV200-IP settings. Alternatively, you can access the configuration menus by pressing the **CONFIG** button on the remote control.

1. **Audio**—Select and set the audio quality, inputs, outputs, and levels.
2. **Video**—Select and set the video inputs, outputs, and formats.
3. **ISDN**—Configure the network ISDN line settings.
4. **Data ports**—Change camera or data port configurations.
5. **Advanced**—Change advanced settings such as:

Language	Auto Answer
Auto Dial	System Name
Security	Standby Mode
Reset	Perform Software Update
Companion Mode	
6. **Ethernet**—Select to set the IP address, user name, and password (Ethernet-equipped units only).

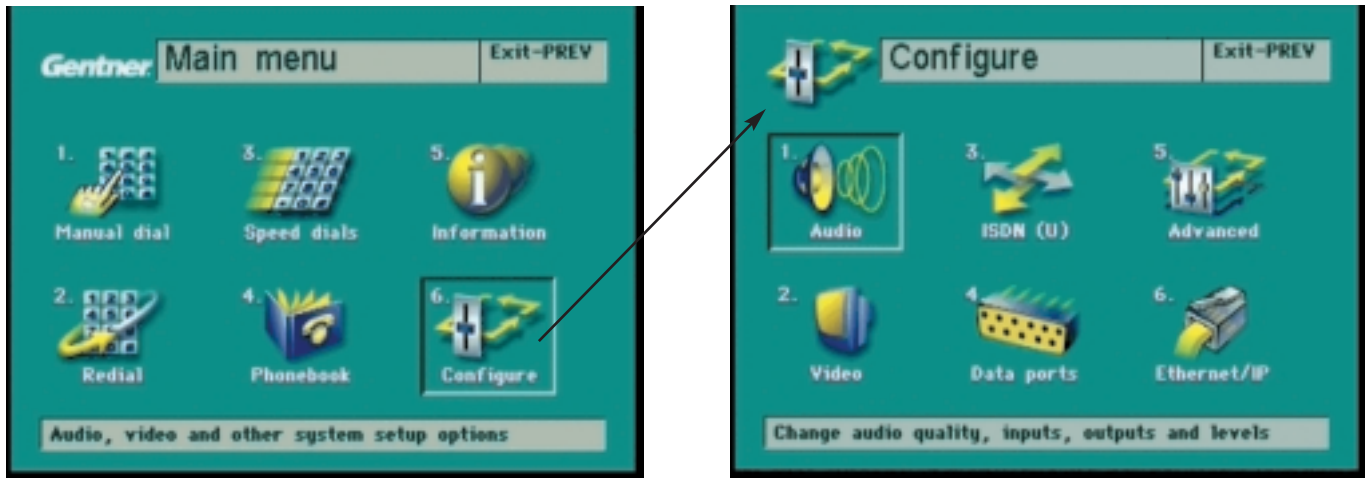


Figure 44. Configure Screen

Audio Menu

Audio

Select this icon to set:

1. Audio quality

2. Audio input

3. Ringer volume

4. Advanced audio settings:

Line out source	Volume buttons
Input mic level	Input line level
Output mix level	Speaker level
Line level out	Echo cancel

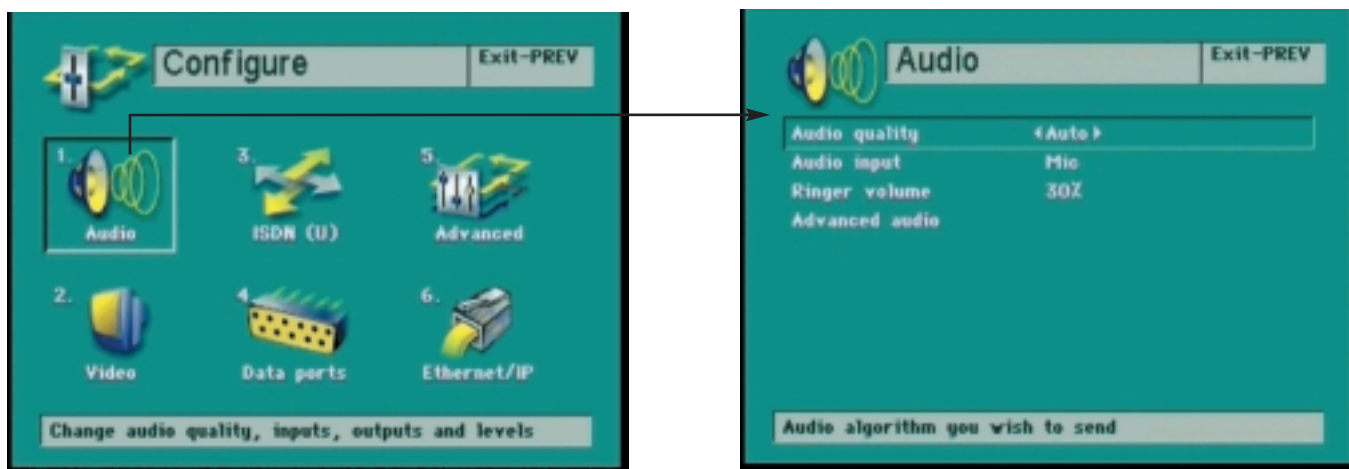


Figure 45. Audio Screen

Audio Quality

Select this option to set the desired audio standard that will be used to transmit audio to the remote location. The selections are:

Auto (default)	This setting will instruct the APV200-IP to automatically adjust to the best audio available, as determined by the capability exchange between the local and remote systems. This is the recommended setting. However, G.728 is the preferred selection for one- or two-channel video calls, and G.722 will be selected for three to six video channel calls.
G.728	This setting should be selected when using the data ports to exchange data between sites and the best video quality is required.
G.711	This setting should be selected when the remote site is known to have only the capabilities of G.711 audio—typically older systems that have not been upgraded.
G.722-56K	This setting should be selected for best audio quality when AUTO mode will not negotiate with the remote site on videoconference calls greater than 128K.
G.722-48K	This setting should be selected when audio quality better than G.728 is required and AUTO mode will not negotiate with the remote site on video calls greater than 128K.

Audio Input

Select this option to configure the input type and input connections for audio transmissions to the remote location.

Mic (default)	Select this option to use the APV200-IP microphone. Attach the microphone device to the MICROPHONE IN jack on the rear panel.
Line	Select this option to use a line microphone, DVD, or VCR. Attach the line device to the AUDIO IN jack on the rear panel.
Mix	Select this option to mix the audio inputs from the MIC IN and LINE IN jacks.

Ringer Volume

Select this option to adjust the incoming ringer volume to a comfortable level.

Advanced Audio

Select this option to configure or make changes to advanced audio options such as:

- Line out source
- Volume buttons
- Input mic level
- Input line level
- Output mix level
- Speaker level
- Line out level
- Echo cancel



NOTE: The factory default settings are recommended for proper operation.

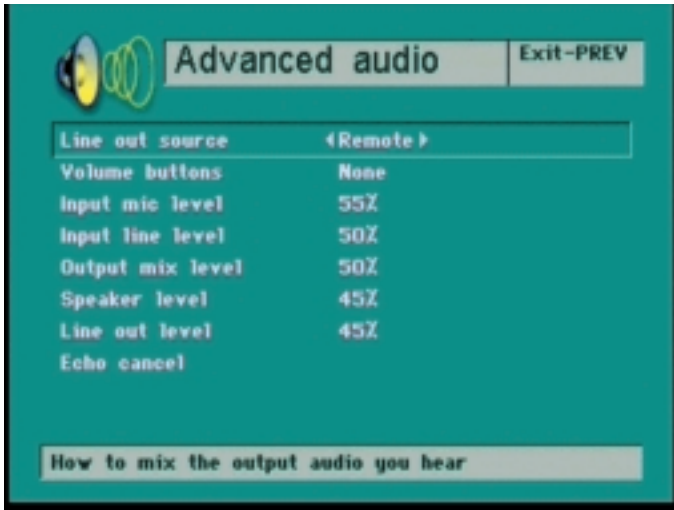


Figure 46. Advanced Audio Screen

Line Out Source

Select this option to configure the source of the line audio that will be sent to the AUDIO OUT jack on the rear panel. This option is applicable when recording to a VCR or using an external line audio system. The selections are:

Remote (default)	Only the received audio from the remote location will be sent to the AUDIO OUT jack.
Remote w/mic	Audio from the remote location will be mixed with the local microphone audio and will be sent to the AUDIO OUT jack.
Remote w/line	Audio from the remote location will be mixed with the local line audio and will be sent to the AUDIO OUT jack.

Volume Buttons

Select this option to configure the audio output that will be controlled by the remote control volume buttons.

Speaker	The audio level to the SPEAKER jack will be controlled.
Line Out	The audio levels to the AUDIO OUT jack will be controlled.
Speaker/Line Out (default)	The audio levels to the SPEAKER jack and the AUDIO OUT jack will be controlled.

Input Mic Level

Factory default is 51%. This option sets the input level for the device connected to the MICROPHONE IN jack. The factory default is set for use with the microphone supplied by Gentner; other microphones may require adjustment of this value.

Input Line Level

Factory default is 51%. This option sets the input level for the device connected to the AUDIO IN jack. The factory default is set for use with the line microphone supplied by Gentner; other microphones may require adjustment of this value.

Output Mix Level

Factory default is 51%. This option sets the mix differential in audio input levels from both the MIC IN and LINE IN jacks on the rear panel.

Speaker Level

Factory default is 51%. This option sets the audio output level to the speaker connected to the SPEAKER jack.

Line Out Level

Factory default is 51%. This option sets the fixed audio output line level to the AUDIO OUT jack.

Echo Cancel

Select this option to change the factory default settings for the following:

Auto gain control	Echo cancellation
Full duplex	Output level

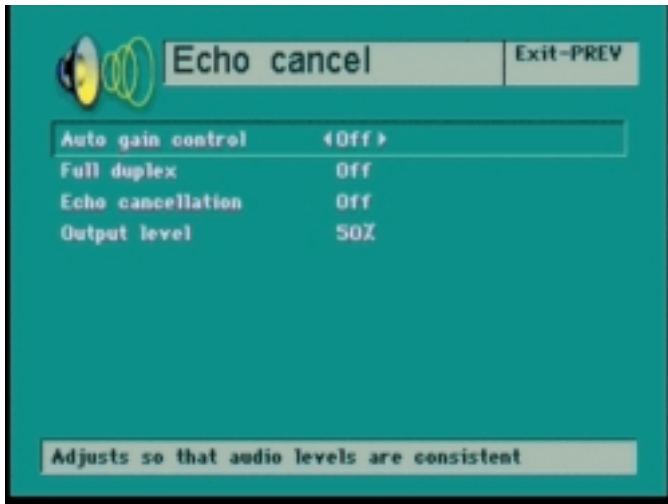


Figure 47. Echo Cancel Screen

Auto Gain Control

Select this option to toggle the automatic gain control on or off.

On (default)	The automatic gain control will adjust the received audio to a consistent level for comfortable listening and effective echo cancellation. If the remote speaker talks loudly, the audio output is decreased. If the remote speaker talks softly, the audio output is increased.
Off	The automatic gain control has no effect on the received audio.

Full Duplex

Factory default is Yes. Select this option to toggle echo cancellation between full and half duplex. Full duplex is the recommended setting.

Echo Cancellation

Select this option to toggle echo cancellation on or off. Echo cancellation eliminates the echo heard by the remote location when their received audio is heard by the microphone and transmitted back to the remote location.

On (default)	Select this option to enable internal echo cancellation.
Off	Select this option to disable the internal echo cancellation when an external audio system is used that contains its own echo cancellation.

Output Level

Factory default is 65%. Do not adjust unless advised to do so by a Gentner Technical Support engineer.

Video Menu

Video

Select this icon to set:

1. Video format
2. Video input 1
3. Video input 2
4. Video output cable
5. Video input 1 type
6. Video input 2 type
7. Video quality

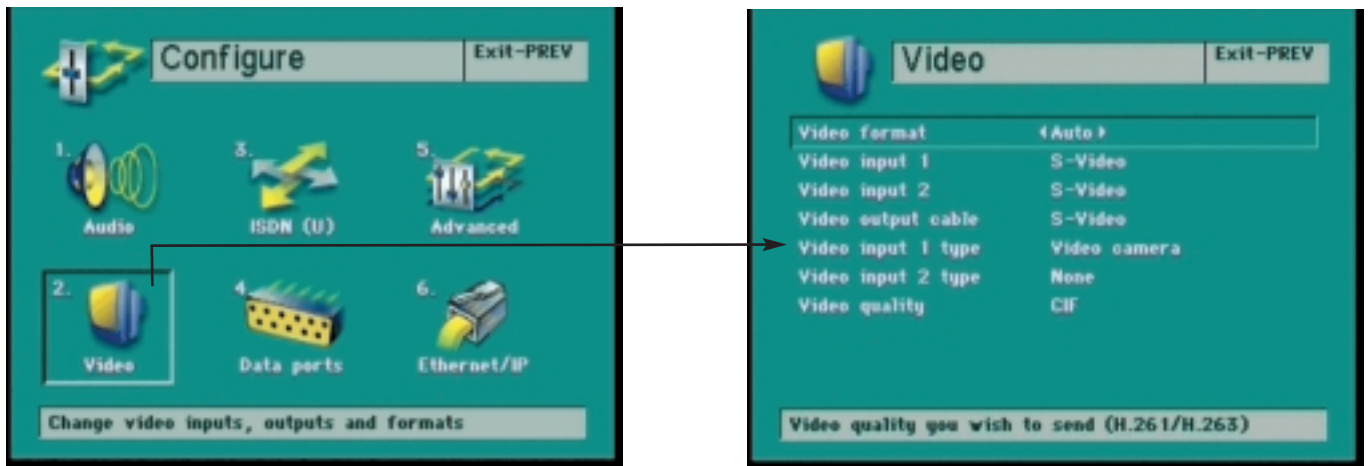


Figure 48. Video Screen

Video Format

Select this option to set the video compression algorithm that will be sent to the remote location. The selections are:

Auto (default)	This setting instructs the APV200-IP to automatically adjust to the best video quality available, as determined by the capability exchange between the local and remote systems. This is the recommended setting. However, H.263 is the preferred selection for one- or two-channel videoconference calls. H.261 will be selected for three- to six-channel videoconference calls.
H.261	This video format standard is used for connections greater than 128K and with systems that are not capable of the standard H.263 for connection at 128K and below.
H.263	This video format standard is used for the best quality video with connections at 128K and below. It is not available for connections above 128K.

Video Inputs 1 and 2

This option sets the cable type for the camera or other device that is connected to the VIDEO IN 1 or VIDEO IN 2 jack.

S-Video (default)	Recommended for best video quality. Used with devices that provide an S-Video signal and use mini-DIN cables and connectors.
Composite	Used with devices that provide a composite video signal and use RCA-type cables and connectors. Connection to the APV200-IP is accomplished by using the S-Video to Composite adapter cable in the accessory package.

Video Output Cable

This option sets the input cable type for the monitor or other device connected to the VIDEO OUT jack on the rear panel. The jack on the back of the monitor or other device may say "S-Video" or, for a composite cable, "Video Out."

S-Video (default)	Recommended for best video quality. Use with devices that require an S-Video signal and use mini-DIN cables and connectors.
Composite	Use with devices that require a composite video signal and use RCA-type cables and connectors. Connection to the APV200-IP is accomplished by using the S-Video to Composite adapter cable in the accessory package.

Video Input 1 and 2 Types

Select this option to choose the type of device that will be connected to the VIDEO IN 2 jacks.

Video camera VCR
Document camera None (no device)

Video Quality

This option sets the desired default video quality that you are sending. Actual video quality will be determined by the capabilities exchange between the local and remote systems.

CIF (default)	Recommended for best video quality (352 x 288 pixels).
QCIF	Standard video quality (176 x 144 pixels).

ISDN Menu

ISDN Line Settings (U and S/T Versions Only)

Select this option to configure the network interface. To enable changes, the APV200-IP must be reset.

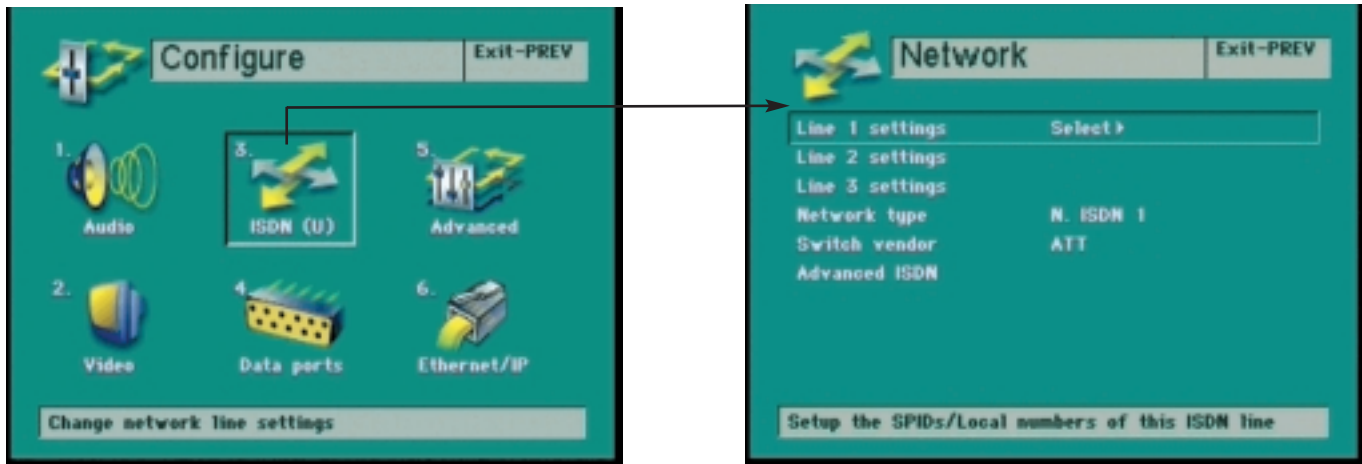


Figure 49. Network Screen

Lines 1, 2, and 3 Settings

Select this option to configure SPID numbers and local numbers for Line 1. Repeat for Line 2 and Line 3, if connected.

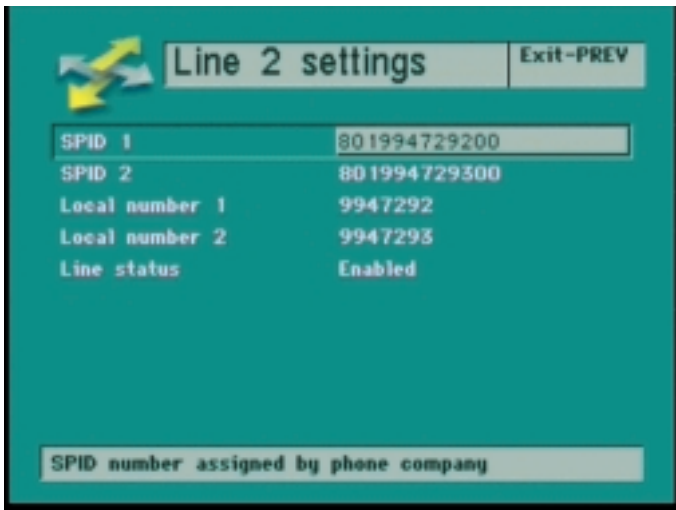


Figure 50. Line 2 Settings Screen

SPID 1 and 2

Enter SPID numbers in the space provided, if required.

- Note:**
1. Only the US and Canada use SPID numbers.
 2. Your ISDN service provider assigns SPID numbers, if required.
 3. You may be assigned 1 SPID, 2 SPIDs, or no SPIDs.
 4. Refer to the Required ISDN Information section in this manual or contact your ISDN service provider for this information.

Local Numbers 1 and 2

Enter your local directory numbers in the space provided.

- Note:
1. Your ISDN service provider assigns your local numbers.
 2. You may be assigned one directory number only.
Enter the same number in the space provided for Local Numbers 1 and 2.
 3. You may be assigned two directory numbers.
Enter directory number 1 in the space provided for Local Number 1.
Enter directory number 2 in the space provided for Local Number 2.

Line Status for Lines 2 and 3

If ISDN lines are connected to jacks 2 and 3, make sure Line Status is set to Enabled.

Network Type

Select this option to choose the network type assigned by your ISDN network provider. The network type assigned depends on your geographical location.

N. ISDN 1 (default)	United States and Canada (also known as NI 1)
NTT Japan	Japan
ETSI	European; parts of France, most Asian countries, and Australia (if using an On-ramp connection)
ITR6	Germany
VN4	France
Australia	Micronet connections
Custom	United States and Canada



NOTE: You must reset or restart the APV200-IP to enable any changes.

Switch Vendor

Select this option to choose the switch vendor assigned by your ISDN network provider. The switch vendor assigned depends on your geographical location and network switching.

AT&T (default)	United States and Canada (4ESS, 5ESS)
Nor. Telecom	United States and Canada (DMS 100)
Siemens	United States and Canada
Unknown	All countries except US and Canada

Advanced ISDN

This option is reserved for factory testing and special applications. Contact Gentner Communications Technical Support for additional information, if required.

Terminate Line

Factory default is **No**. This option is reserved for factory testing and special applications.

Emulate Switch

Factory default is **No**. This option is reserved for factory testing and special applications.



NOTE: If Emulate Switch is set to **YES**, you will not be able to place or receive calls on your ISDN lines.

Data Ports Menu

Data Ports

Select this icon to configure camera control and data ports. To enable changes, you must reset the APV200-IP.

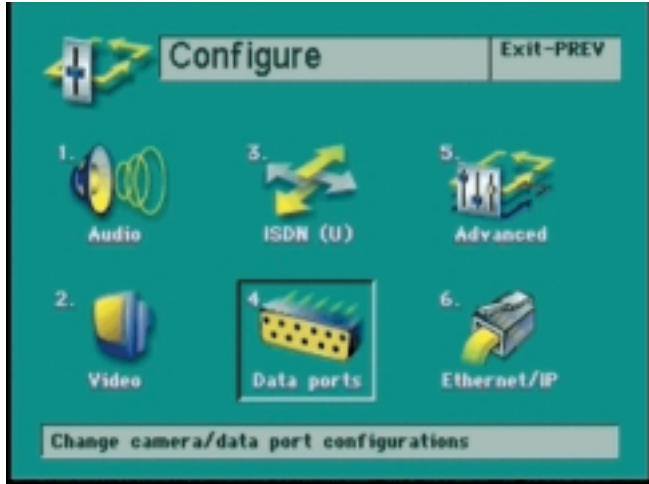


Figure 51. Configure Screen

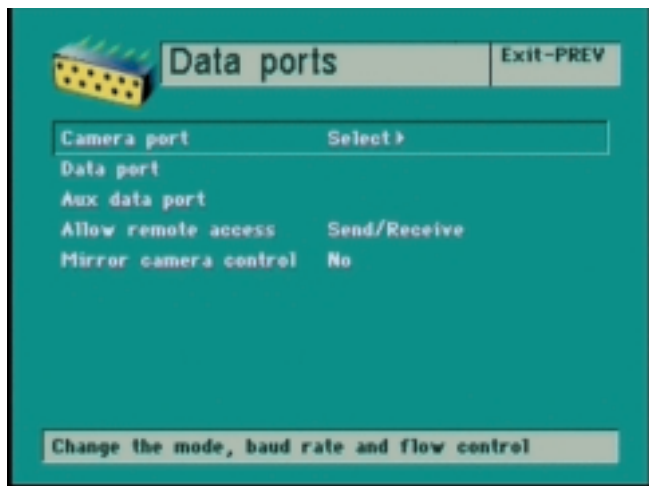


Figure 52. Data Ports Screen

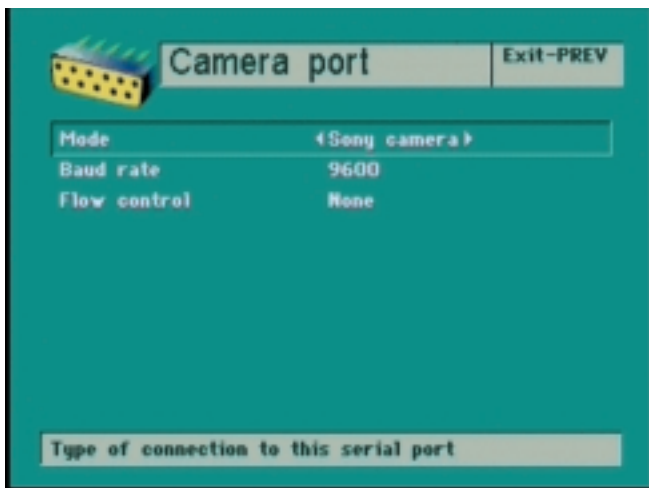


Figure 53. Camera Port Screen

Camera Port

Mode

Select this option to set the camera type that is attached to the CAMERA CONTROL jack on the rear panel. This port defaults to a Sony camera, but may also be used for data.

Sony Camera (default)	Select this option for use with Sony PTZ cameras with a VISCA IN control port.
Canon camera	Select this option for use with Canon VCC series PTZ cameras with an RS232 control port.
Panasonic camera	Select this option for use with Panasonic PTZ cameras with a Camera Control control port.
VCR Type 1	Select this option for use with a VCR equipped with a Type 1 control port.
Debug	Select this option to obtain debugging logs using a PC and HyperTerminal.
Data	Select this option for data collaboration using Microsoft's NetMeeting or the API.
Null Modem	Select this option for a pass-through data pipe.
Test	Reserved for factory testing.

Baud Rate

Select this option to set the rate in Kilobits per second (Kbps) the data will flow through the camera control port. Consult the device manufacturer's documentation for the proper selection.

300	4800
1200	9600 (default)
2400	19200

Flow Control

Select this option to choose the data flow control method. Consult the device manufacturer's documentation for the proper selection.

None (default)	No flow control will be applied.
X-on/X-off	Software flow control will be applied.
RTS/CTS	Hardware flow control will be applied.

Data Port

Select this option to configure the data port for data or control applications.

Mode

Select this option to change the operating mode of the data port.

Sony camera	Select this option for use with Sony PTZ cameras with a VISCA IN control port.
Canon camera	Select this option for use with Canon VCC series PTZ cameras with an RS232 control port.
Panasonic camera	Select this option for use with Panasonic PTZ cameras with a Camera Control control port.
VCR Type 1	Select this option for use with a VCR equipped with a Type 1 control port.
Debug	Select this option to obtain debugging logs using a PC and HyperTerminal
Data (default)	Select this option for data collaboration using Microsoft's NetMeeting or the API.
Null Modem	Select this option for a pass-through data pipe.
Test	Reserved for factory testing.
AP400	Select this option to control the Gentner AP400 audioconferencing system.

Baud Rate

Select this option to set the rate in Kilobits per second (Kbps) the data will flow through the data port. Consult the device manufacturer's documentation for the proper selection.

300	19200
1200	28800
2400	38400
4800	57600
9600	115200

Flow Control

Select this option to choose the data flow control method. Consult the device manufacturer's documentation for the proper selection.

None	No flow control will be applied.
X-on/X-off	Software flow control will be applied.
RTS/CTS (default)	Hardware flow control will be applied.

Aux Data Port

Select this option to configure the AUX DATA port for data or control applications.

Mode

Select this option to change the operating mode of the AUX DATA port.

Sony camera	Select this option for use with Sony PTZ cameras with VISCA IN control port
Canon camera	Select this option for use with Canon VCC series PTZ cameras with an RS232 control port.
Panasonic camera	Select this option for use with Panasonic PTZ cameras with a Camera Control control port.
VCR Type 1	Select this option for use with a VCR equipped with a Type 1 control port.
Debug (default)	Select this option to obtain debugging logs using a PC and HyperTerminal.
Data	Select this option for data collaboration using Microsoft's NetMeeting or the API.
Null Modem	Select this option for a pass through data pipe.
Test	Reserved for factory testing.
AP400	Select this option to control the Gentner AP400 audioconferencing system.

Baud Rate

Select this option to set the rate in Kilobits per second (Kbps) the data will flow through the aux data port. Consult the device manufacturer's documentation for the proper selection.

300	19200
1200	28800
2400	38400
4800	57600
9600 (default)	115200

Flow Control

Select this option to choose the data flow control method. Consult the device manufacturer's documentation for the proper selection.

None (default)	No flow control will be applied.
X-on/X-off	Software flow control will be applied.
RTS/CTS	Hardware flow control will be applied.



NOTE: You must reset or restart the APV200-IP to enable any changes.

Allow Remote Access

Select this option to permit or prohibit the remote site to control your PTZ camera.

No	Select this option to allow local camera control and disable far end control of your camera. The remote site camera cannot be controlled.
Send Only	Select this option to allow local camera control and control of the far end camera. The remote site will not be able to control the local camera.
Send/Receive (default)	Select this option to allow local camera control and far end camera control. The remote site will be able to control the local camera.

Mirror Camera Control

Select this option to enable the camera to mirror the left/right camera control buttons.

Yes	Select this option to enable the mirror feature. The camera will now move left when the LEFT arrow button is pressed or right when the RIGHT arrow button is pressed. This works on the same principle as that of using a mirror—when you wave your right hand in front of a mirror, the hand on the right side moves.
No (default)	Select this option to disable the mirror feature. The camera will now move right when the LEFT arrow button is pressed, and left when the RIGHT arrow button is pressed.

Advanced Menu

Advanced

Select this icon to set:

1. Language
2. Auto Answer
3. Companion Mode
4. Auto Dial
5. System Name
6. Software Update
7. Security
8. Standby Mode
9. Reset System

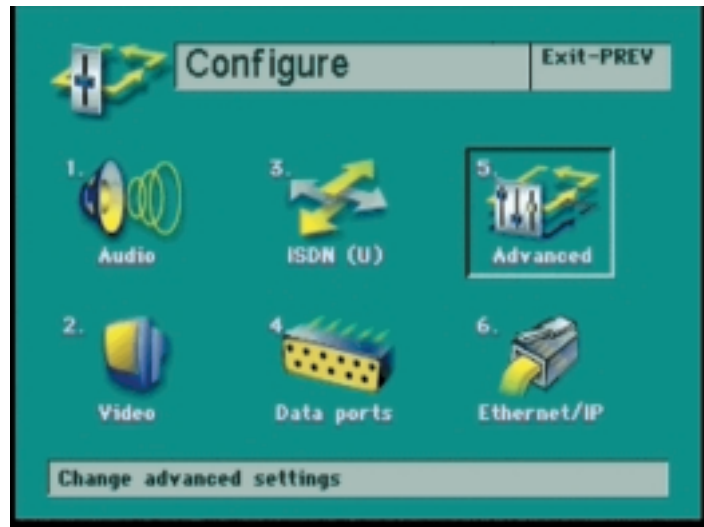


Figure 54. Configure Screen

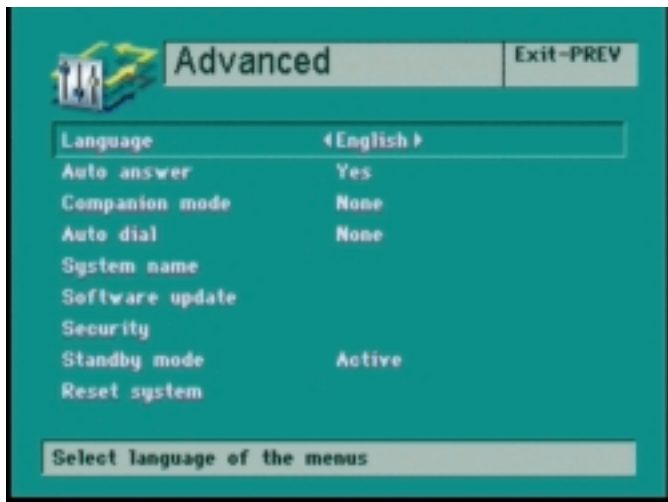


Figure 55. Advanced Screen

Language

This option is used for selecting the language that will be displayed in the menus. English is the only option at this writing.

Auto Answer

Select this option to choose how the APV200-IP will answer incoming calls.

Yes (default)	Select this option to instruct the APV200-IP to automatically answer all incoming video and voice calls with no restrictions.
No	Select this option to disable Auto Answer. The user must press the ENTER button to manually answer the incoming call.
Video	Select this option to instruct the APV200-IP to automatically answer only video incoming calls and reject incoming voice calls.
Yes (audio muted)	Select this option to instruct the APV200-IP to automatically answer all incoming video and voice calls but with the local microphone audio muted.

Companion Mode

Select this option to configure the APV200-IP to accommodate a second APV200-IP and monitor to show Annex D stills. The master and slave APV200-IPs are connected via the SCSI ports.

None (default)	Select this option when there is only one APV200-IP.
Master	Select this option to configure the primary APV200-IP. This unit will be connected to the ISDN network and will respond to remote control commands.
Slave	Select this option for the secondary APV200-IP. This unit will not be connected to the ISDN network and will not respond to remote control commands.

Auto Dial

Select this option to enable the APV200-IP to automatically dial an ISDN number previously entered in PHONEBOOK locations 1, 2, or 3 upon power up. If power or the network connection is disrupted, the APV200-IP will redial in continued attempts to restore the connection. Select None (default) to disable the AUTO DIAL feature.

System Name

Select this option to enter a System Name for identification to an MCU connection. Refer to page 35 for NAME ENTRY instructions.

Software Update

Select this option to request a new software update, when available, via an ISDN video call to a remote Gentner server. Your video call will remain active during the update. However, all remote control functions will be disabled during the update process.

Upon selecting this option, a Software Update submenu will open. Enter the ISDN numbers for the software server you are calling in the spaces provided. Press **DIAL** to initiate the call and the automatic update.

Upon completion, another menu will appear, notifying you the update was successful. Turn the power off for five seconds, then turn the power on so the software update can be completed.

Security

Select this option to enter the Security submenu to set password protection on or off, change your password, or reinitiate the Setup Genie.

Password Protection

Select this option to enable or disable password protection.

On	Select this option to restrict configuration changes to the holders of the password. Upon selecting this option, you will enter a submenu where you will be prompted to enter your new password and confirm it. When enabled, a lock icon will appear in the title bar at the top of each configuration menu screen. Temporary configuration changes can be made, but the APV200-IP will return to the password protected configuration when reset or when the power is cycled, unless you return to this menu and manually save the changes.
Off (default)	Select this option to turn password protection Off. Upon selecting this option, you will enter a submenu where you will be prompted to enter your password and confirm it.



WARNING! REMEMBER YOUR PASSWORD. This password protection feature does not include a “back door” access or reset. You must contact Gentner Technical Support for further instructions.

Edit Password

Select this option to change your current password.

Current Password	Enter your current password.
New Password	Enter the new password.
Retype New Password	Confirm your new password by re-entering the new password.

Redo Setup Genie

Select this option to display the Setup Genie on the next reset or restart of the APV200-IP. All settings currently entered and saved will be retained and displayed with the option to make changes.

Standby Mode

Select this option to set the monitor display mode when the APV200-IP is not in an active call.

Local Video	Select this option to display the local camera or video input device.
Active	Select this option to display the random, fade away remote control screen saver.

Reset System

Select this option to perform a “warm” or “soft” restart of the APV200-IP.

Ethernet/IP Menu

Ethernet/IP (V.35 Version Only)

Select this option to set up the Ethernet port on the APV200-IP and enter the IP address information for this network mode. To complete the setup, the APV200-IP must be reset.



NOTE: Contact your Information Systems manager or network administrator to obtain the correct entry information. Entering the wrong information can cause serious IP network problems.

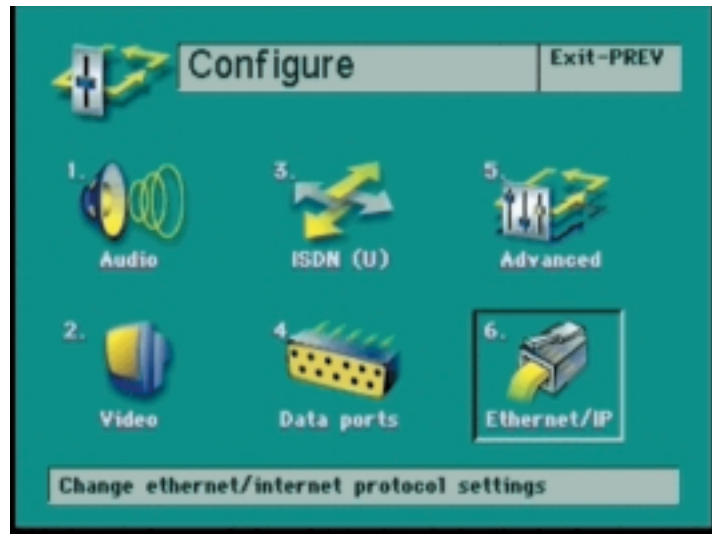


Figure 56. Configure Screen

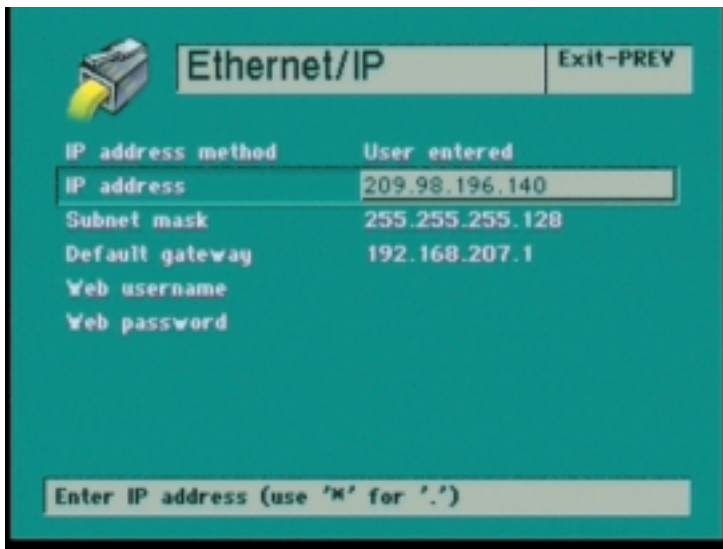


Figure 57. Ethernet/IP Screen

IP Address Method

Select this option to set the IP addressing method.

User Entered

Select this option to manually enter the assigned IP address for this mode.

IP Address	Enter the assigned IP address for this node (i.e., 000.000.000.000).
Subnet Mask	Enter the assigned subnet mask IP address for this node (i.e., 000.000.000.000).
Default Gateway	Enter the assigned IP address for this node (i.e., 000.000.000.000).



NOTE: You must reset or restart the APV200-IP to enable any changes.

Automatic DHCP (Dynamic Host Control Protocol)

Select this option to allow the network server to automatically assign this node's IP addresses.

Web User Name

Select this option to enter a Web User Name for an Ethernet connection. This is case sensitive. Refer to page 33 for Name Entry instructions.

Web Password

Select this option to enter a Web Password for an Ethernet connection. This is case sensitive. Refer to page 33 for Name Entry instructions.

5 Specifications

APV200-IP Specifications

Videoconferencing standards

H.320

H.323 ready

Network Capability

ISDN, V.35, BRI, PRI, T1/E1

IMUX

Built-in (standard on 384)

Bonding

Call all other VCS standards-based systems (standard on 384 engines)

Video Compression

H.261

H.263

Audio Standards

G.711

G.722

G.728

Full duplex echo cancellation

H.281 Remote camera control

Near and far end camera control

2 Video Inputs-Camera Input

Composite/S-video input #1 (NTSC or PAL) Composite/S-video input #2 (NTSC or PAL)

Video Output

Composite/S-video output (NTSC or PAL)

Audio Inputs

Electret microphone included. Line level input.

Audio Outputs

External speaker output

Line level output

Ethernet port

Web server control

0/100 BaseT

Data Input/Output

RS232 serial port

Telephone Network Interface

Three RJ-45 ISDN

User Controller

Soft touch infrared remote controller API

Operating Conditions

10-40 degrees Celsius, 50-105 degrees Fahrenheit

5-90% humidity (non-condensing)

0-12,000 feet elevation

Power

Universal input power supply

(90-265VAC, 47-63Hz)

50 Watt (max.) power consumption

Size

2.130" tall x 10.642 " deep x 11.425" wide (May sit flat, on its side, or installed in a rack.)

Weight

10 lbs (4.5 kg)

Video Interface

Direct to TV or projection system; does not require computer system attachment for display.

Data Collaboration

PowerPoint and NetMeeting ready, plug-n-play to support presentations

Remote Control

The IR remote controller included with your APV200-IP operates all functions of the APV200-IP system. The remote control operates on two AA alkaline batteries.

Microphone

The microphone included with the APV200-IP is a 360 degree dynamic conference room microphone for set-top applications.