

Upgrading Firmware

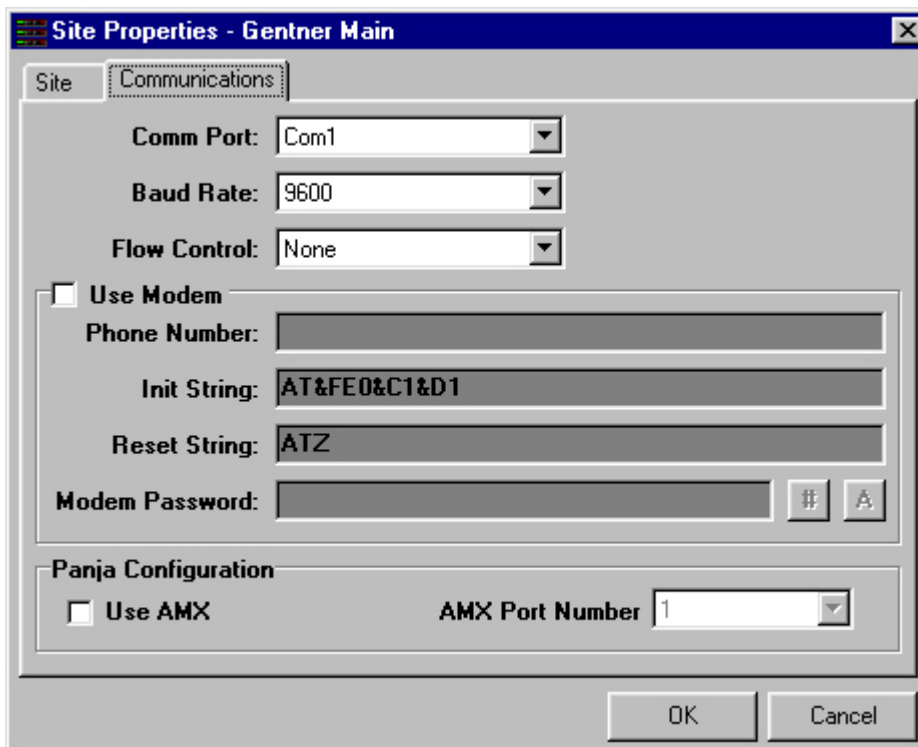
After you have installed AP-Ware, open it and complete the following steps.


1. Establish a direct connection **using a 9-pin straight-through serial cable** from your PC to the AP unit.

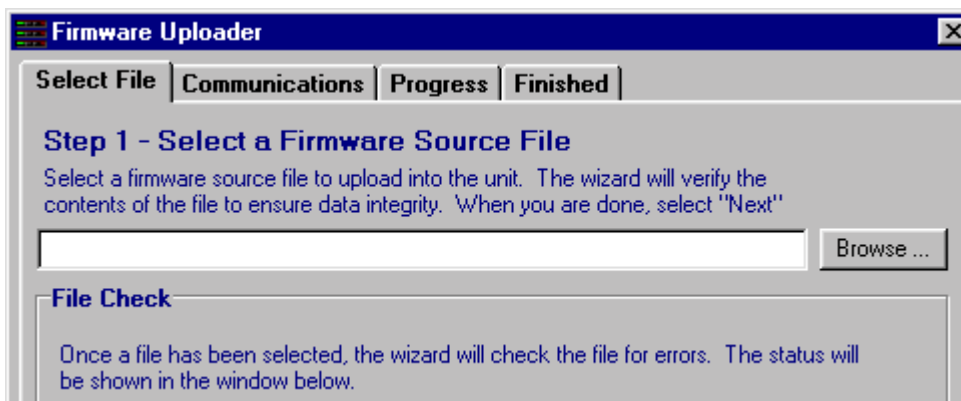
2. Open AP-Ware and click the [New Site button](#) .

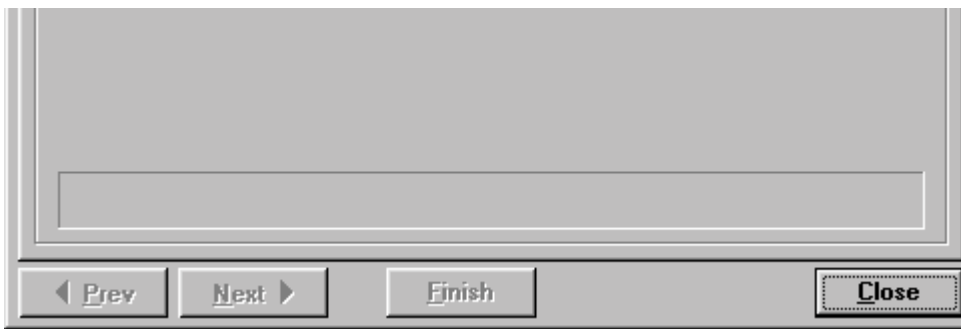
3. The Site Properties window will open. Select the Communications tab. From the drop-down menus, select the desired **COM Port** and **Baud Rate**. The Baud Rate selected here must match the Baud Rate on the AP unit.

4. Set **Flow Control** to None. Click OK to save the settings and close the window.

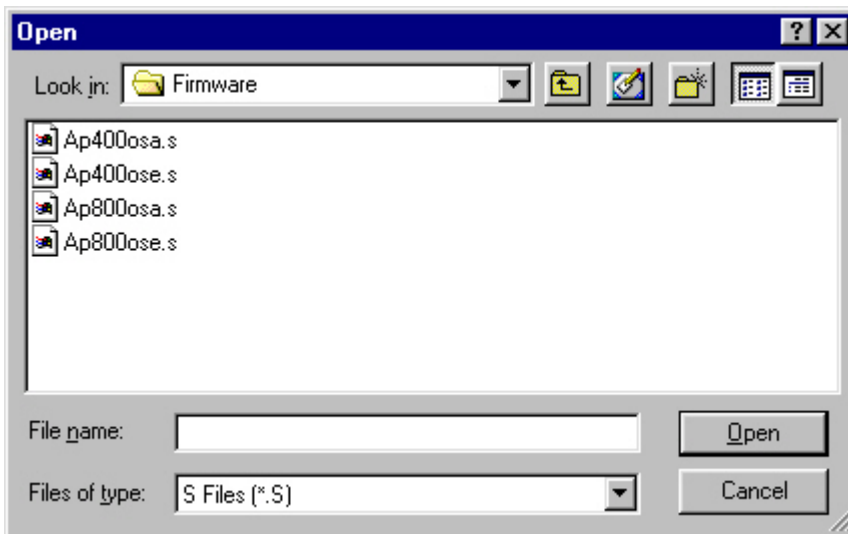


5. Click the [Firmware Upload button](#)  on the toolbar to open the Firmware Uploader.





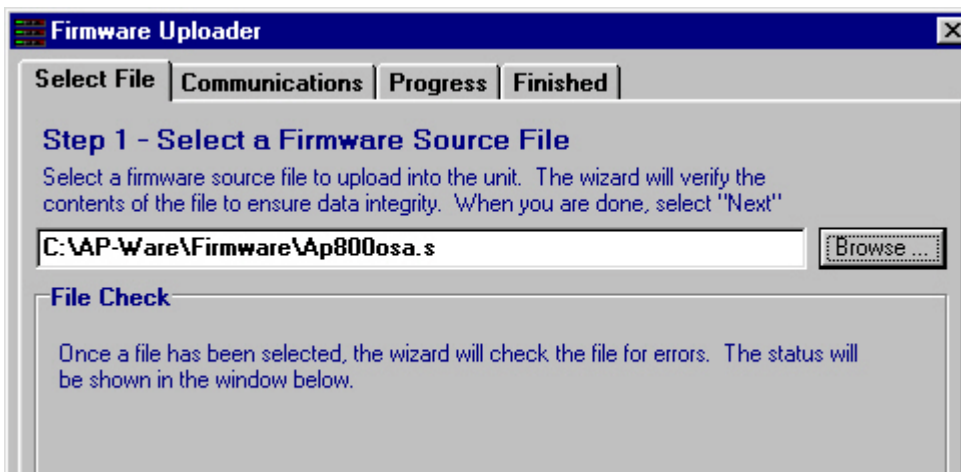
6. Click **Browse** to locate the firmware file.

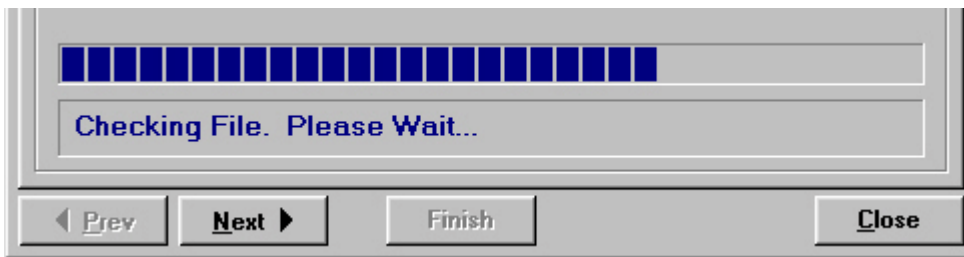


7. Select the firmware file that matches the current firmware version on your AP unit and click **Open**.

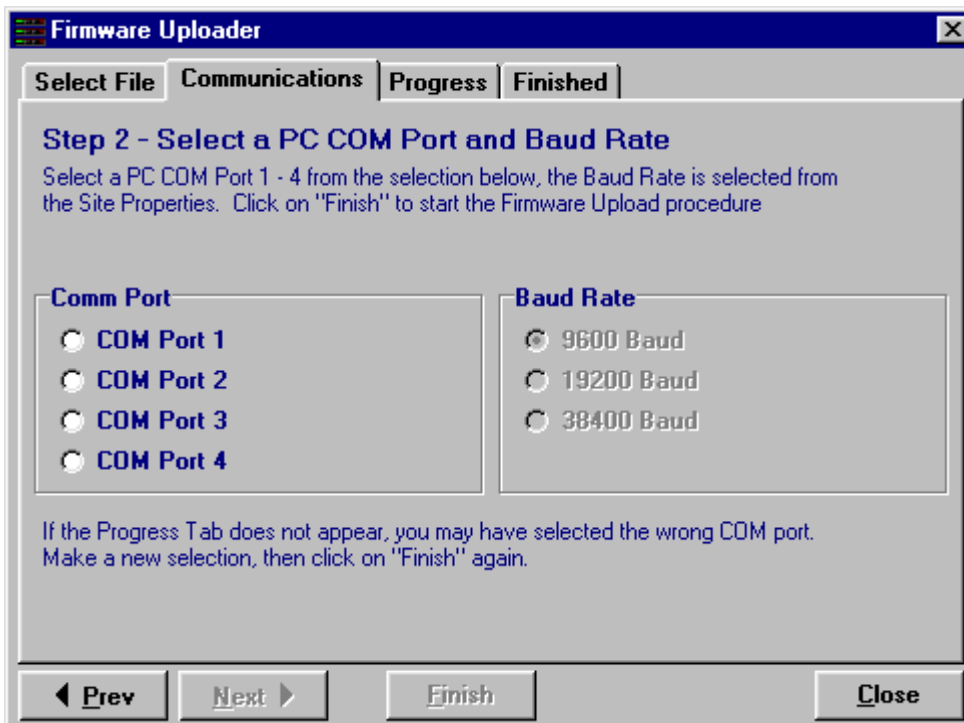
Note: The current firmware version is displayed in the front panel LCD. If there is no letter following the version number, select the appropriate **osa.s** file. If the letter **e** follows the version number, select the appropriate **ose.s** file. For example: AP400 VER 3.0 requires Ap400osa.s; AP400 VER 3.0e requires Ap400ose.s.

8. The [Firmware Uploader](#) checks the file for errors. Click **Next**.





9. Select the [COM Port](#) to be used for the connection and click **Finish**.



10. The [Progress and Finished tabs](#) display the progress of the file upload. When the firmware is uploaded, click **Start Over** on the Finished tab to upload firmware to another unit, or click **Close** to exit the program.

Note: Do not disconnect cables or otherwise interrupt the firmware upload process.



