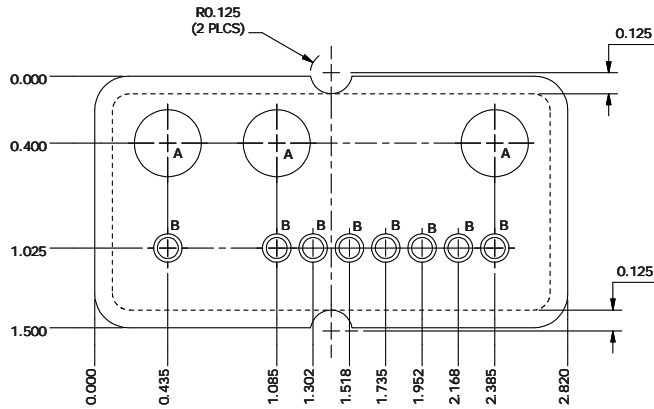
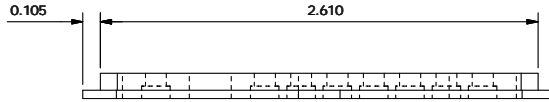
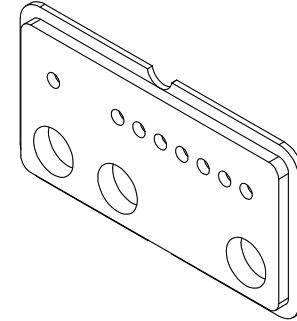
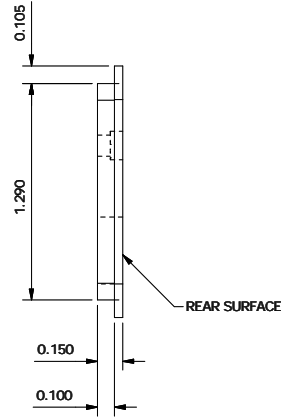
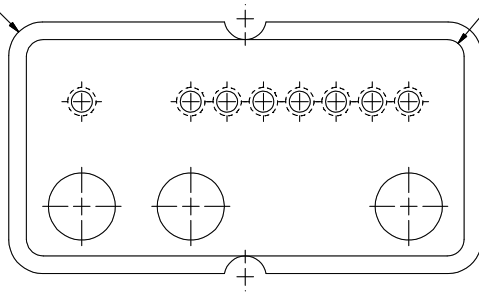


R0.200  
(4 POS'NS)

R0.100  
(4 POS'NS)



**HOLE DATA**

**3 HOLES REF. A**  
Ø0.400 THRU

**8 HOLES REF. B**  
Ø0.125 THRU

C'BORE Ø0.170 x 0.075 DP.

**NOTES**

**1. MATERIAL**  
ABS PLASTIC; COLOR WHITE.

**2. FINISH**  
REMOVE ALL BURRS AND SHARP EDGES.  
ALL MACHINED SURFACES TO BE 125

**3. PART IDENTIFICATION**  
STAMP PART NUMBER AND REVISION LEVEL IN  
0.1" MIN. HIGH LETTERS ON REAR SURFACE.

**Gentner**

Communications Corporation  
1825 Research Way, Salt Lake City, Utah 84119  
Phone: 801-975-7200 Fax: 801-977-0087

This document contains information proprietary to Gentner Communications Corporation and may not be copied in whole or in part by any means without the prior authorization of Gentner Communications Corporation.

**REVISION SPECIFICATION**

**REV. 3.0**

NAME: Jim Wright  
RELEASE DATE: 02/08/2001

**DCN # 841**

REDESIGNED AND REDRAWN.

**REVISION SPECIFICATION**

**REV. 4.0**

NAME: Jim Wright  
RELEASE DATE: 05/16/2001

**DCN # 904**

TWO CUTOUPS (R0.125) ADDED TO OUTER LIP.

CHECKED	DATE	PLT DATE	02/08/2001
APPROVED	DATE	DRAWN	Jim Wright
		DATE	01/28/2001
ALL DIMENSIONS ARE IN INCHES			
DESCRIPTION			
<b>PLATE, FACIA PSR VOLUME CONTROL</b>			
TOLERANCES (UNLESS SPECIFIED OTHERWISE)			
3 PLACE DECIMALS, ± 0.005	SIZE	B	DWG NO
2 PLACE DECIMALS, ± 0.010			<b>740-155-051</b>
ANGLES, ± 0.1°			REV <b>4.0</b>
SCALE	N.T.S.	DO NOT SCALE	SHEET 1 OF 1