

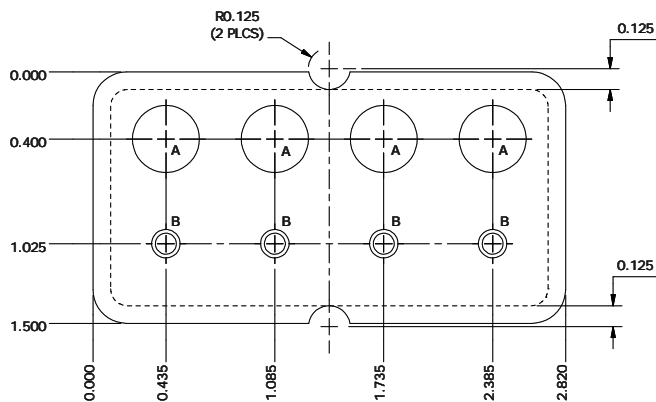
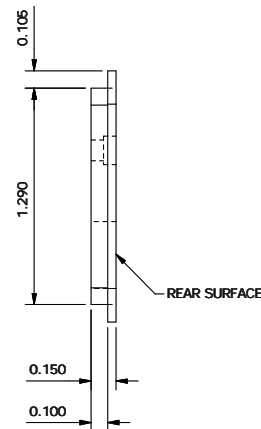
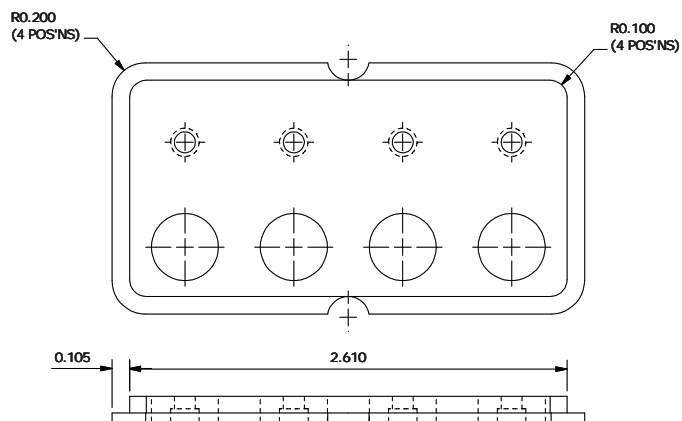
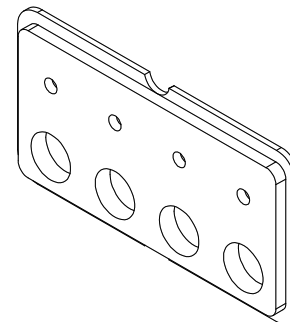
This document contains information proprietary to Gentner Communications Corporation and may not be copied in whole or in part by any means without the prior authorization of Gentner Communications Corporation.

REVISION SPECIFICATION

REV. 3.0
NAME: Jim Wright
RELEASE DATE: 02/09/2001
DCN # 841
REDESIGNED AND REDRAWN

REVISION SPECIFICATION

REV. 4.0
NAME: Jim Wright
RELEASE DATE: 05/16/2001
DCN # 904
TWO CUTOUTS (R0.125) ADDED TO OUTER LIP.



HOLE DATA

4 HOLES REF. A
ø0.400 THRU

4 HOLES REF. B
ø0.125 THRU
C'BORE ø0.170 x 0.075 DP.

NOTES

- MATERIAL**
ABS PLASTIC; COLOR WHITE.
- FINISH**
REMOVE ALL BURRS AND SHARP EDGES.
ALL MACHINED SURFACES TO BE 125/√
- PART IDENTIFICATION**
STAMP PART NUMBER AND REVISION LEVEL IN
0.1" MIN. HIGH LETTERS ON REAR SURFACE.

| | | | |
|---|-------|-------------|--------------|
| CHECKED | DATE | PLT DATE | 02/09/2001 |
| APPROVED | DATE | DRAWN | Jim Wright |
| | | DATE | 01/28/2001 |
| ALL DIMENSIONS ARE IN INCHES | | DESCRIPTION | |
| PLATE, FACIA OPTION SELECT | | | |
| TOLERANCES (UNLESS SPECIFIED OTHERWISE) | | | |
| 3 PLACE DECIMALS, ± 0.005 | SIZE | DWG NO | REV |
| 2 PLACE DECIMALS, ± 0.010 | B | 740-155-050 | 4.0 |
| ANGLES, ± 0.1° | SCALE | N.T.S. | DO NOT SCALE |
| | | | SHEET 1 OF 1 |