

# XAP® Net

## Professional Audio Conferencing Systems



The ClearOne XAP® Net is an advanced control interface that allows remote management of XAP and PSR systems through your LAN or the Internet.

### REMOTELY MANAGE YOUR XAP SYSTEM

The new XAP Net brings Ethernet connectivity to your XAP/PSR audio systems, allowing you to remotely program, upgrade or perform diagnostics. With support for common network control and management protocols, XAP Net easily integrates into the local area network (LAN).

Once XAP Net is installed, you can use G-Ware configuration software to connect to the site through the network and create or adjust system settings, route audio inputs, view meters and upgrade firmware. XAP Net also features a built-in HTTP server that allows you to run presets and macros, adjust input and output gain and view unit and site information from a web browser.

The XAP Net's internal system cache increases access speeds for larger systems by storing a copy of the parameters from every unit in the system locally. This can significantly decrease the time it takes to configure systems or upgrade firmware.

#### Solve problems faster with less downtime

Remotely access site status and programming to quickly identify and resolve problems with minimal customer impact.

#### Upgrade unit firmware remotely

Perform firmware upgrades remotely through the network, eliminating the need to connect serially to each unit in the site.

#### Reduce costly on-site visits

Program or make adjustments to your system without sending a technician on-site by using G-Ware configuration software across the network.

#### Easily integrate into LANs

XAP Net supports all common network control and management protocols, making it an easy addition to your corporate LAN.

#### Free training and support

Increase your product knowledge through ClearOne's extensive training programs and industry-leading technical support.

### REMOTE INTERFACE FOR INTERNET ACCESS

The XAP Net has a built-in web server that provides a remote interface to your XAP/PSR system. This allows you to access your system without having G-Ware installed on your computer.

The screenshot shows the XAP Net web interface. The top navigation bar includes 'Home', 'Log Out', and 'Help' buttons, along with the 'XAP NET' logo. The main content area is divided into two sections: 'Site Settings' and 'XAPNet Settings'. The 'Site Settings' section includes fields for Site Name (XAPNET-0028), Company (ClearOne), Location (Corporate Office), and Room (Large Meeting Room). It also features 'Safety Mute ON' and 'Safety Mute OFF' buttons. The 'XAPNet Settings' section displays various parameters such as Serial Number (0), Mac Address (00:01:0A:01:03:1F), IP Address (10.1.1.199), and Firmware Version (XAPNet Version 0.9.82).

The XAP Net home page displays connected units and XAP Net settings.

The screenshot shows the 'Unit Settings' page for an XAP 800 unit. The top navigation bar is identical to the home page. The 'Unit Settings' section includes fields for Unit Name (XAP800 0), Unit ID (B498D988), Device (50), and Firmware (2.7.1). It also features 'Presets' and 'Last Preset' dropdown menus, and 'Last Macro' and 'Last Macro' buttons. Below this is the 'Audio Settings' section, which is a table with columns for Inputs, Mute, Gain, Post Gain Meter, Outputs, Mute, Gain, and Output Meter. The table lists 12 inputs and 12 outputs, each with a checkbox for Mute and a numerical value for Gain and Output Meter.

The XAP 800, 400, TH2 and PSR1212 pages display unit settings and controls.

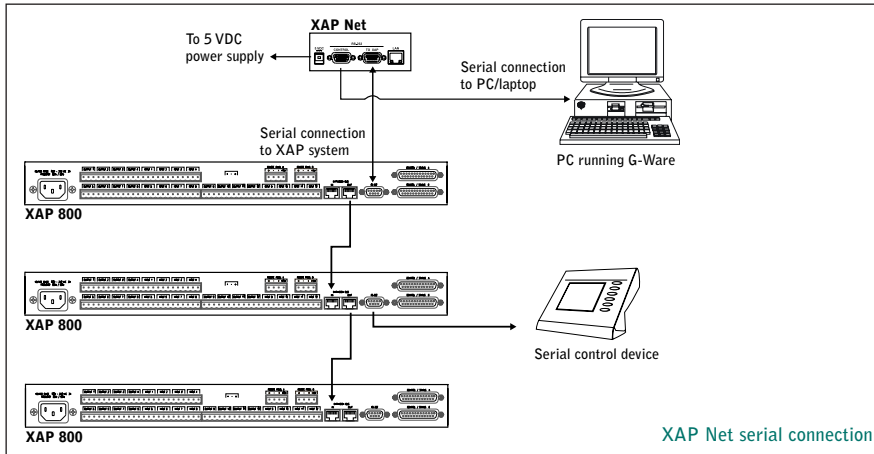
**ClearOne**  
You're Virtually There<sup>SM</sup>

# PRODUCT BRIEF

## ADVANCED PRODUCT FEATURES

- ▶ **RS-232 port** allows for easy connection to XAP/PSR system
- ▶ **Additional RS-232 port** provides extra port for local serial control
- ▶ **Baud rate auto-detection** facilitates connection to a XAP unit
- ▶ **Telnet support** for remote LAN control from any terminal device
- ▶ **Event logging** with time stamping facilitates system diagnostics
- ▶ **XAP Net Locator** locates any XAP Net on your subnetwork
- ▶ **HTTP server** provides system control of most common features from web browser
- ▶ **Security** with Telnet password and IP filtering
- ▶ **Compatible** with new and previously installed XAP/PSR systems
- ▶ **Internal system cache** for increased communication speeds
- ▶ **Remote firmware uploads** for faster, simplified upgrades

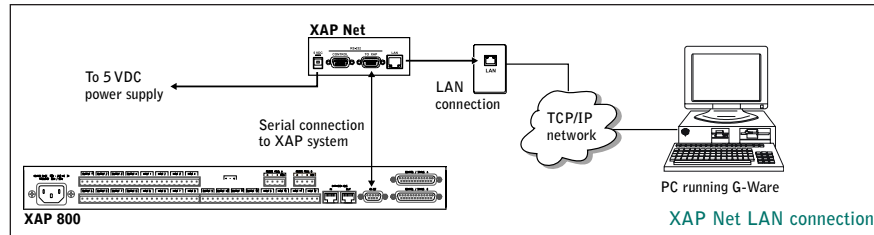
## INSTALLATION DIAGRAMS



### Connect to new or existing XAP/PSR installed systems

The XAP Net connects easily to XAP or PSR1212 systems using an RS-232 serial connection. The XAP Net features two serial ports, which allows you to add the XAP Net to your system without sacrificing a serial port.

Once the XAP Net is connected, it will be able to communicate with all linked units in the system. You can access the system using a serial connection from your PC or using an Ethernet connection for remote management.



## PRODUCT SPECIFICATIONS

### Dimensions (W x D x H)

4" x 4.25" x 1.5"  
(10.2 cm x 10.8 cm x 3.8 cm)

### Power

External power supply  
100-240VAC; 50/60 Hz; 5 W

### RS-232

DB9 Female  
BPS selectable  
9.6k/19.2k/38.4k/57.6k  
CTS/RTS Flow control  
DB9 Male  
Auto configured for XAP

### Ethernet

Type: 10/100 BASE T  
Auto sensing  
Connector: RJ-45

### LAN LEDs

Good Link (Green)  
Speed (Yellow)

### LAN Support

Network protocols: TCP/IP, DNS,  
UDP, DHCP, ARP, HTTP, ICMP

### Environmental

Operating Temperature: 32–122° F  
(0–50° C)  
Humidity: 15%–80%

### Front Panel LEDs

Active  
Illuminates (green) when active  
Status  
Green = Connected to XAP  
Red = Ready, no XAP connection

### Compliance

FCC  
CSA  
CE

### Model Number

910-151-150