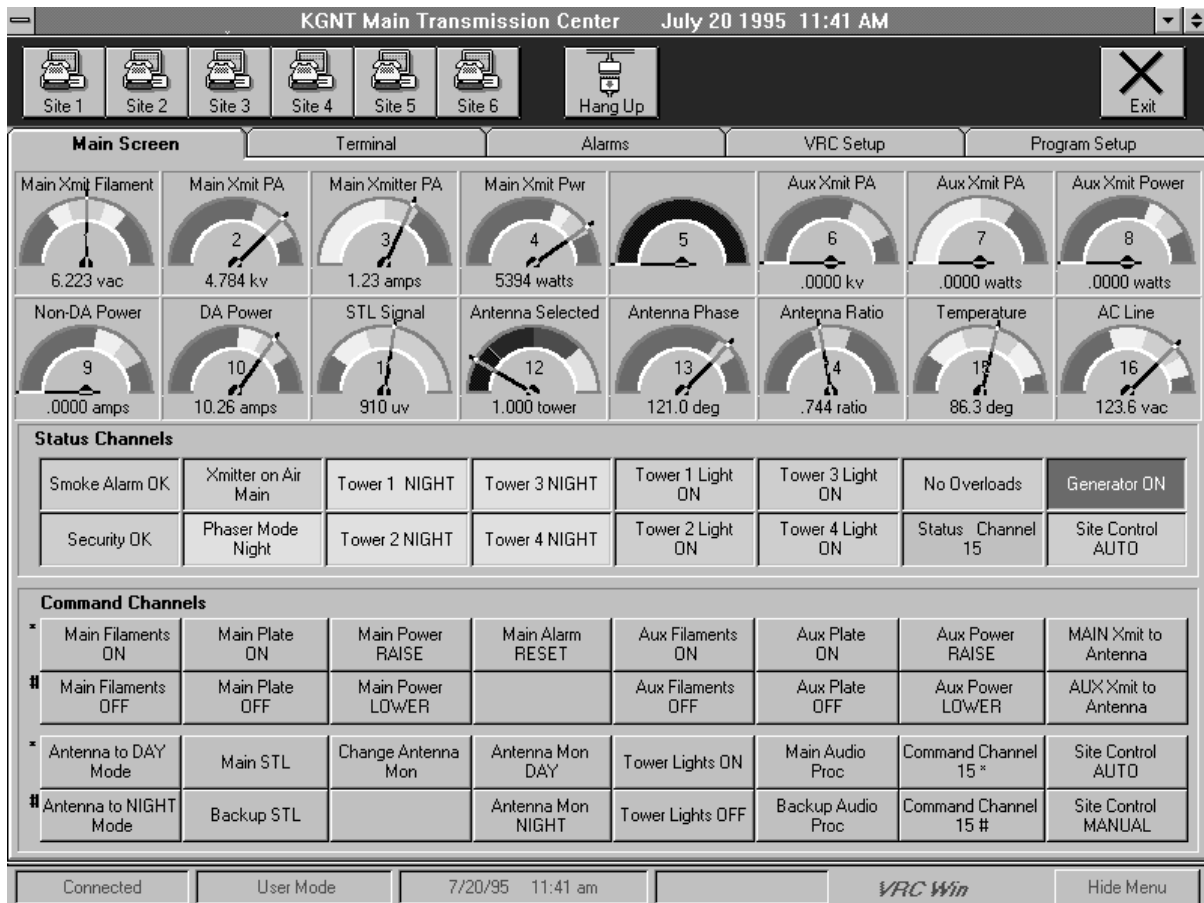


# VRC - WIN

## VRC2000 WINDOWS® SOFTWARE



### PRODUCT OVERVIEW

Now you can operate your Gentner VRC200 Remote Control Unit with "point and click" ease. VRC-Win software provides the same functions as the DOS program, Setup VRC2000, but operates in the user friendly Windows® environment. All operations available in the DOS software may be accomplished with the VRC-Win including logging, time of day, mute, clock and other set up functions the terminal mode and full operation of a VRC2000.



800.945.7730

801.975.7200

### FEATURES/BENEFITS

- Dial and connect to any of six sites just by clicking on the desired SITE icon. (Site names, telephone numbers and access codes are stored in the program.)
- Obtain metering readings with both analog and numeric displays (you can select meter colors and scale lengths for each display).
- See the current conditions of all status at a glance.
- Initiate a command by pointing and double clicking the mouse. Both command states (raise/lower,etc..)are displayed for each channel to make operation easier.
- Automatically or manually log conditions, while sending data to a printer, file "data logging or both.

Text stored in the terminal mode of Setup VRC2000 (the software supplied with your VRC2000 unit) is use by VRC-Win for operation of metering, status and command channels.

# VRC - WIN

## VRC2000 WINDOWS® SOFTWARE

### Multi Site Operation

Site names are user programmed; access codes and telephone numbers are stored within VRC-Win. Each site identification name is used for the configuration file associated with that site and a logging data file. Configuration files from Setup VRC2000 are convertible to VRC-Win configuration files.

### Metering and Status Displays

An analog meter displays the relative channel value on a analog meter scale. The meter scale length and colors are user selectable. Tolerance limits (if set) are retrieved from the setup file associated with VRC-Win. Five areas are programmable on the scale as to color: the two upper limits, two lower limit and operational area. Next, the actual four

digit number coming from the VRC2000 is shown below the analog meter display. The name of each channel, along with the for the units for this display, are those set for each channel in the terminal mode.

Status channel conditions are displayed numerically. On the initiation, the current state will be displayed.

### Command Channels

Upon initiation of VRC-Win the last command activated is shown. Others are shown with the default display until a command is issued. A command is issued by simply pointing and double-clicking with a mouse. No channel numbers or other keys are needed for issuing commands.

### Computer Requirements

VRC-Win requires an IBM® or compatible PC with 100% Hayes-compatible modem, VGA (SVGA preferred) monitor (640 x 480, min.:800 X 600, preferred), 4MB RAM, Microsoft® Windows 3.1 or later running in standard or enhanced mode and at least 2MB of hard disk space. Mouse required. Additional hard disk space is desirable if "disk logging" will be used. A VRC1000 that has been equipped with VRC2000 firmware may be used with VRC-Win .

VRC-Win should be run on a PC with a 486DX or Pentium processor. If you use a 386, it must have a math coprocessor.



Gentner Communications Corporation  
1825 Research Way  
Salt Lake City, UT 84119 USA

800.945.7730

801.975.7200

Fax: 801.977.0087  
<http://www.gentner.com>

Try our conference Call service:  
1-800-LETS MEET

Send this document to any fax machine with Gentner's Fax-On-Demand: 800.695.8110 Doc. #5002

**WE PUT THE WORLD ON SPEAKING TERMS™**

©1997 Gentner Communications Corporation. Printed in USA, 11/97. Features, specifications, and descriptions are accurate as of this printing. Gentner reserves the right to modify this information without prior notice or obligation.