

## Sx80MB

### Mounting Bracket Kit

- Allows for wall or ceiling mounting of an Sx80 speaker system
- Available in black (Sx80MBB) or white (Sx80MBW)

#### Description

The Electro-Voice Sx80MB is a mounting bracket for installing the Sx80 loudspeaker on a wall or a ceiling. The kit consists of two nylon washers, two friction washers, two M6 x 20 mm phillips pan washer head screws, and one U-bracket (see Figure 1).

#### Wall or Ceiling Mounting Instructions

Refer to Figure 1 and Chart 1 for the following steps.

1. Attach the U-bracket (D) to the wall or ceiling using fasteners that are suitable for the wall or ceiling material (not supplied). Figure 2 is a dimensional drawing of the U-bracket. It gives dimensions for the size, the mounting holes, and the holes used to attach the speaker to the bracket.
2. Remove the paper backing from one of the friction washers (B) and attach these to the U-bracket as shown. Be sure that the through holes on the friction washers line up with the through holes on the U-bracket.
3. Remove the hole plugs from the top and bottom of the Sx80 for the U-bracket by gently prying with a small screwdriver.
4. Mount the Sx80 to the U-bracket with the supplied M6 screws (C), ensuring that the nylon washers (A) are mounted between the U-bracket and the screws.

5. Rotate the speaker so that the input terminal is accessible and attach the wires. Position the speaker for the desired angle and tighten the screws sufficiently so that the speaker does not inadvertently rotate.

**CAUTION: Due to the weight of the Sx80 speaker system, it is imperative that the Sx80MB bracket be properly secured to the wall or ceiling. The choice of fastener (not provided with the bracket kit), will be determined by the material and construction of the mounting surface.**

#### Limited Warranty

Electro-Voice products are guaranteed against malfunction due to defects in materials or workmanship for a specified period, as noted in the individual product-line statement(s) below, or in the individual product data sheet or owner's manual, beginning with the date of original purchase. If such malfunction occurs during the specified period, the product will be repaired or replaced (at our option) without charge. The product will be returned to the customer prepaid. **Exclusions and Limitations:** The Limited Warranty does not apply to: (a) exterior finish or appearance; (b) certain specific items described in the individual product-line statement(s) below, or in the individual product

data sheet or owner's manual; (c) malfunction resulting from use or operation of the product other than as specified in the product data sheet or owner's manual; (d) malfunction resulting from misuse or abuse of the product; or (e) malfunction occurring at any time after repairs have been made to the product by anyone other than Electro-Voice Service or any of its authorized service representatives. **Obtaining Warranty Service:** To obtain warranty service, a customer must deliver the product, prepaid, to Electro-Voice Service or any of its authorized service representatives together with proof of purchase of the product in the form of a bill of sale or receipted invoice. A list of authorized service representatives is available from Electro-Voice at 600 Cecil Street, Buchanan, MI 49107 (800/234-6831 or FAX 616/695-4743). **Incidental and Consequential Damages Excluded:** Product repair or replacement and return to the customer are the only remedies provided to the customer. Electro-Voice shall not be liable for any incidental or consequential damages including, without limitation, injury to persons or property or loss of use. Some states do not allow the exclusion or limitation of incidental or consequential damages so the above limitation or exclusion may not apply

# Sx80MB Mounting Bracket Kit

Sx80MB Mounting Bracket Kit

to you. **Other Rights:** This warranty gives you specific legal rights, and you may also have other rights which vary from state to state.

**Electro-Voice Accessories** are guaranteed against malfunction due to defects in mate-

rials or workmanship for a period of one (1) year from the date of original purchase. Additional details are included in the Uniform Limited Warranty statement.

**For warranty repair** or service information, contact the service repair department

at: 616/695-6831 or 800/685-2606.

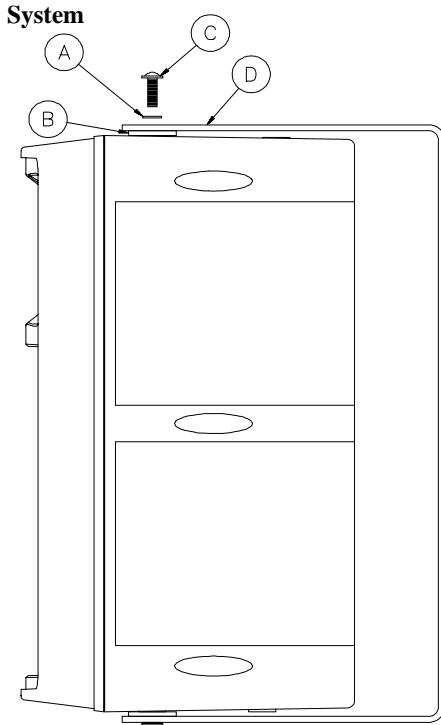
**For technical assistance,** contact Technical Support at 800/234-6831 or 616/695-6831, M-F, 8:00 a.m. to 5:00 p.m. Eastern Standard Time.

Specifications subject to change without notice.

Chart 1: Sx80MB Kit Parts List

Item	Part Number	Quantity	Description
A	38018	2	Nylon washer
B	39020	2	Friction washer
C	63322	2	M6 x 20 mm phillips pan washer head screw
D	71765	1	U-bracket

**Figure 1—Attaching the Sx80MB to the Sx80 Speaker System**

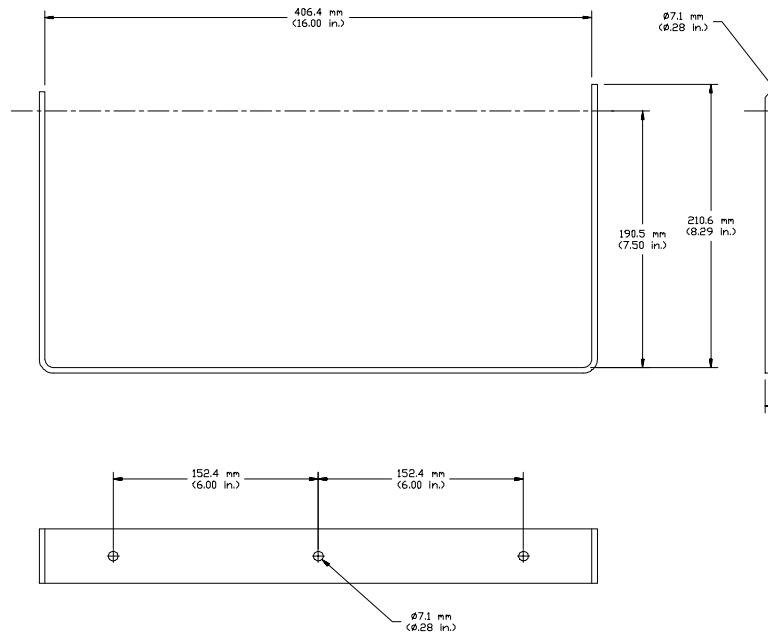


**Specifications**

**Wall/Ceiling Mounting holes:**

Three in-line 6.35-mm (0.25-in.) diameter clearance holes, centers spaced 152-mm (6.0-in.) apart

**Figure 2—Sx80MB Mounting Bracket Dimension**



**Enclosure Mounting Holes:**

Two 6.35-mm (0.25-in.) diameter clearance holes on the ends of the bracket

**Material:**

8-gauge hot-rolled steel

**Finish:**

Wrinkle powder coat black (Sx80MBB) or white (Sx80MBW)

**Parts Supplied (see Chart 1):**

- Nylon washers (two)
- Friction washers (two)
- M6 x 20 mm phillips pan washer head screws (two)
- U-bracket (one)

**Net Weight:**

1.15 kg (2.53 lb)

**Shipping Weight:**

1.60 kg (3.53 lb)

**Electro-Voice®**

600 Cecil Street, Buchanan, MI 49107

616/695-6831, 616/695-1304 Fax