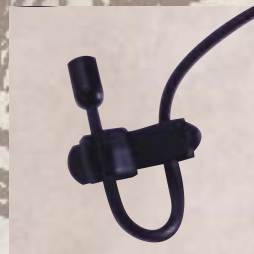




# RE90 ARCHITECTURAL MICROPHONE SERIES



MINIATURE  
ELECTRET  
CONDENSER  
MICROPHONES

ONE VOICE. NATURALLY.



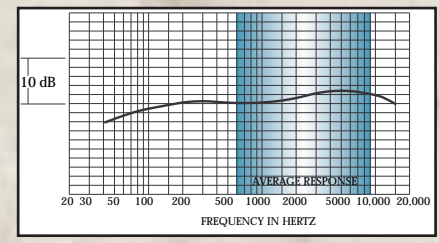


**RE90L ULTRAMINIATURE,  
OMNIDIRECTIONAL LAPEL MICROPHONE**

Hearing is believing (you have to look closely to *see* it). Ultraminiature and ultralightweight, anyone wearing the RE90L can easily forget he or she is wired. Designed for sound reinforcement in applications such as houses of worship, schools and business presentations, this smallest, lightest of all microphones on the market, has the highest quality sound characteristics. It is well-balanced throughout its full range. Omnidirectional output is uniform and natural, no matter where the microphone is placed.

The compact electronics housing is made of a high-strength polycarbonate that is very lightweight but very durable. A side clip attaches the unit to belt, waistband or pocket.

- Ultraminiature and lightweight (the smallest available).
- Omnidirectional.
- Tiny but sturdy 6-foot shielded cable.
- Alligator and tie-tac clips included.
- Lightweight, clip-on electronics pack.



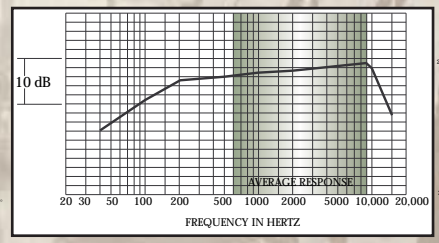
**RE90B/RE90BW BOUNDARY MICROPHONE**

With the lowest profile of any boundary microphone, the RE90B/RE90BW is one of the smallest available. Unidirectional, it picks up every word and delivers it fully and naturally, without the distraction of ambient noise.

The RE90B is specifically designed for surface-mounted applications such as distance learning centers, video- or teleconferencing systems, classrooms, and houses of worship. It can be placed on a surface for temporary use, routing its miniature cable from the rear where it's barely visible. Or installed permanently, with the hidden cable routed through a hole in the surface.

The microphone is equipped with internal padding, printed circuit board, fiber washers for the mounting screws, and a rubber, non-slip pad covering the entire base. These elements combine to give you the advantage of extremely low surface-to-microphone vibration. And built-in equalization provides a fuller, more natural sound than other typical boundary microphones.

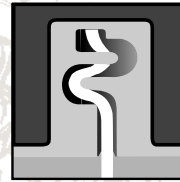
- Nonreflecting black (RE90B) or low gloss white (RE90BW)
- Heavy-duty zinc die-cast body and strong, perforated steel screen.
- Low profile.
- Half-cardioid polar response promotes excellent gain-before-feedback.
- Built-in electronic equalization compensates for baffle effect.
- High gain electronics for greater reach.
- Fixed or portable.
- Miniature 6-foot cable, two-way cable routing, and tamper-resistant terminal block connection.
- Full-base, non-slip shock pad.
- Electrically isolated case.



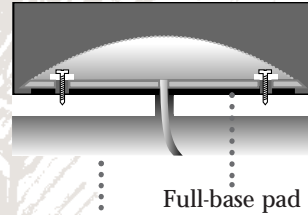
**Sound Reasons** for the Superiority of the Electro-Voice  
RE90 Architectural Microphone Series

- Most natural sound in the field.
- Consistent sound quality and performance.
- Durable, with a dependable, long life.
- Simple to install. Easy to operate.
- Affordable. Competitively priced.
- Unconditional, two-year guarantee.
- Limited lifetime warranty on the element.

WITH THE LOWEST PROFILE OF ANY BOUNDARY MICROPHONE, THE RE90B/RE90BW IS ONE OF THE SMALLEST AVAILABLE.



The microphone features a unique "S-Curve" cording mechanism. This allows the miniature cord to be easily and quickly routed to the back of the microphone for portable use.

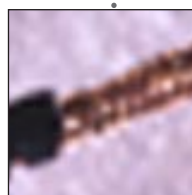


Internal padding, a rubber, non-slip pad covering the entire base, and fiber washers for mounting screws, minimize surface vibrations. For permanent installation the cable can be totally hidden by routing it through the surface.

Full-base pad



Ultraminiature, ultralightweight, the RE90L provides uniform, natural sound. The included alligator and tie-tac clips make it easy to place the microphone anywhere on clothing. Lightweight electronics pack has side clip.



An exclusive braided, shielded cable prevents the RE90H/RE90HW hanging microphone from rotating, even with wide swings in temperature or humidity. No need for awkward "fish-line" tethering.

The slim-profile RE90P-12 and RE90P-18, with power module in the base, mount quickly to lectern, pulpit or podium. The gooseneck, 12-inch or 18-inch, can be precisely positioned without excessive twisting and turning.





MODEL:	RE90B and RE90BW	RE90H and RE90HW	RE90L	RE90P-12 and RE90P-18
DESCRIPTION:	Barrier, Boundary Microphone	Hanging Microphone	Ultra-Miniature Lapel Microphone	12-inch (RE90P-12) 18-inch (RE90P-18) Microphone
ELEMENT:	Condenser	Condenser	Condenser	Condenser
POLAR PATTERN:	Cardioid	Cardioid	Omni	Cardioid
FREQUENCY RESPONSE:	80-15KHz	75-15kHz	50-18kHz	70-15kHz
SENSITIVITY:	25mV/pascal	27mV/pascal	12.6mV/pascal	4.5mV/pascal
DYNAMIC RANGE:	102 dB	95 dB	103 dB	102 dB
POWER REQUIREMENT:	9-52 Vdc	9-52 Vdc	9-52 Vdc	9-52 Vdc
CURRENT CONSUMPTION:	2.5 mA	2.0 mA	1.0 mA	2.5 mA
OUTPUT IMPEDANCE:	200 Ohms	200 Ohms	100 Ohms	200 Ohms
FINISH:	Low-Gloss Black (RE90B), Low-Gloss White (RE90BW)	Low-Gloss Black, (RE90H), Low-Gloss White (RE90HW)	Low-Gloss Black	Low-Gloss Black
DIMENSIONS:	94.1 mm (3.7 in.) W x 128.4 mm (5.1 in.) L x 16.0 mm (0.63 in.) H	12.7 mm (0.4 in.) D x 36.8 mm (1.45 in.) L	4.9 mm (0.19 in.) D x 8.1 mm (0.32 in.) L	12.7 mm (0.4 in.) D x 40.0 mm (1.6 in.) L
FEATURES:	Low profile, rugged construction; full-base non-slip shock pad; miniature 6-foot cable; standard 3-pin male XLR-type output connector	Small profile, rugged construction; 25-foot braided, shielded cable; standard 3-pin male XLR-type output connector	External windscreen, alligator clip, and tie-tac clip included; 6-foot shielded cable; light-weight clip-on 3-pin XLR-type output connector	Flexible, durable steel tube and gooseneck construction, external pop filter included; optional FMK flange mount and CPSM shock mount kits available; standard 3-pin male XLR-type output connector



**Electro-Voice®**

600 Cecil Street, Buchanan, Michigan 49107, Phone: 616/695-6831, Fax: 616/695-1304  
 Electro-Voice, 345 Herbert St., Gananoque, Ontario, Canada K7G 2V1, Phone: 613/382-2141, Fax: 613/382-7466  
 Electro-Voice, A.G., Keltenstrasse 11, CH-2563 IPSACH, Switzerland, Phone: 011-41/32-51-6833, Fax: 011-41/32-51-1221  
 Electro-Voice, Hirschberger Ring 45, D-94302, Straubing, Germany, Phone: 011-49/9421-7060, Fax: 011-49/9421-706265  
 Electro-Voice, Parc de Courcerin—Allée Lech Walesa, Lognes, f-77185 Marne La Vallée, France, Phone: 011-33/1-6480-0090, Fax: 011-33/1-6006-5103  
 Electro-Voice, 2-5-60 Izumi, Suginami-ku, Tokyo, Japan 168, Phone: 011-81/3-3325-7900, Fax: 011-81/3-3325-7789  
 Electro-Voice, Unit 24, Block C, Slough Business Park, Slough Ave., Silverwater, N.S.W. 2141, Australia, Phone: 011-61/2-648-3455, Fax: 011-61/2-648-5585  
 Electro-Voice, Unit E & F, 21/F., Luk Hop Industrial Bldg., 8 Luk Hop St., San Po Kong, Kowloon, Hong Kong, Phone: 011-852/351-3628, Fax: 011-852/351-3329