

NEW! Product Information

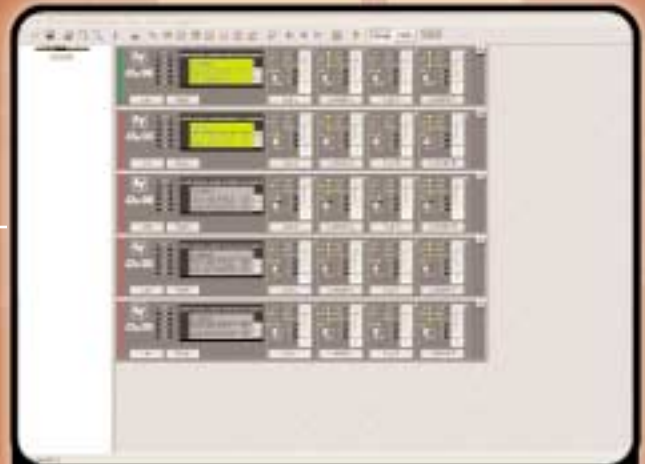
RACE 2.00

Real Time Acoustic Cluster Editor

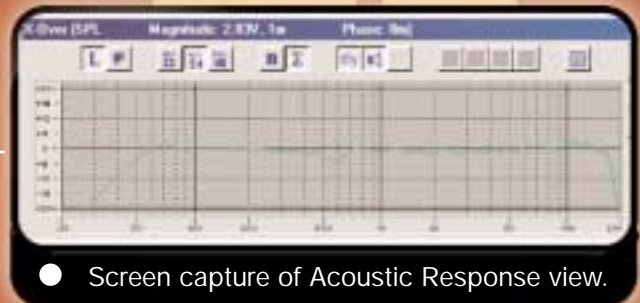
- *RS-485 Interface Remote for EV's Dx38 Digital Sound System Controller*

RACE 2.00 and EV's Dx38 offer a unique level of control for larger and more complex sound systems. Up to 31 Dx38 units can be controlled via the RS-485 interface at a distance exceeding a half mile. RACE 2.00 allows users real time control of integral Dx38 functions for incredibly accurate system tuning. What you see is what you hear. New functions such as copy and paste make working with larger systems a breeze! Additionally, the RS-485 interface enables a firmware update of multiple units at once.

- Controls up to 31 Dx38 units from one PC
- Set ups are stored as "Projects" including all parameters, speaker data and comments
- Group function to link multiple Dx38s
- Real Time Input and Output Metering
- Separate LED for Compressor and Limiter thresholds
- Live Mode with locked parameters
- Set-up Mode for full parameter access
- Real Time Display of the Acoustic Response for EV cabinets



● Screen capture of Dx38 controller view.



● Screen capture of Acoustic Response view.

Interfacing the Dx38 to RACE 2.00 for real-time editing is easily accomplished by replacing the factory installed RS-232 interface with the RS-485 board. Networking to all Dx38s in a system is accomplished by using one EV DCN 485.

The DCN 485 is connected to the COM1 port of the PC; power is supplied through the PS/2 connector. The DCN 485 provides a PS/2 slave for an external mouse. Connection for the RS-485 interface is XLR 3-pin.



NRS90247 - RS Interface for Dx38 (Part #: 112767)



DCN 485 - RS-232 to RS-485 Converter (Part #: 407017)



Telex Communications, Inc.
12000 Portland Avenue South, Burnsville, Minnesota 55337
phone: 952.884.4051, fax: 952.884.0043
www.telex.com / www.electrovoice.com

©2001 Telex Communications, Inc. 20597 11/01