

EBK-2

Eyeut Attachment Kit

- Mounting kit for EP925 and EP950 ceiling speaker series
- Provides three attachment points for secure suspension of a single speaker enclosure

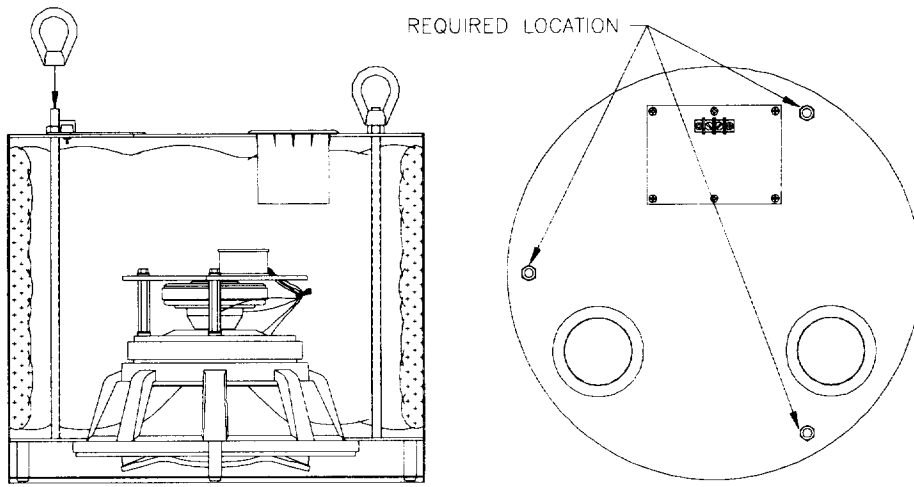


Figure 1—Lifting Eyeut Installation

Description

The EBK-2 attachment kit contains three lifting eyeuts which screw onto the protruding threaded rod provided on the EP925 and EP950 speakers.

The lifting eyeut attachment points can then be used to suspend the ceiling speakers using hardware rated for overhead lifting.

Hanging Instructions

The speaker is hung using all three lifting eyeuts securely threaded onto the threaded rods protruding from the rear of the enclosure.

Suspending any object is potentially dangerous and should be attempted only by individuals who have a thorough knowledge of the techniques and regulations of rigging objects overhead. Altec Lansing sanctions suspending the EP ceiling speakers only when all current national, federal, state and local regulations are taken into account. When the EP ceiling speaker is suspended, Altec Lansing strongly recommends that the system be inspected at least once a year. If any sign of weakness is detected, corrective action should be taken immediately.

Installation Instructions

(see Figure 1)

1. Screw the lifting eyeut onto the threaded rod until the base of the eyeut has contacted the securing nut on the threaded rod.
 2. Finger tighten eyeut securely (see Figure 2).
- CAUTION: OVERTIGHTENING THE EYENUT WITH A WRENCH, SCREWDRIVER, etc. CAN RESULT IN SYSTEM FAILURE AND INJURY.**
3. Use certified hardware rated for overhead lifting to suspend the speaker (see Figure 3).

Strength Rating

The EBK-2 Attachment Kit and the EP speaker enclosure are rated for suspending only one speaker (8:1 safety factor). **Hanging any additional weight from the speaker will exceed its strength rating and create an unsafe condition.** Table 2 lists the

strength ratings for the 3/8-inch lifting eyeuts with an 8:1 safety factor. The lifting eyeuts are rated for direct pull only (0 degrees) (see Figure 2).

Uniform Limited Warranty Statement

Altec Lansing products are guaranteed against malfunction due to defects in materials or workmanship for a specified period, as noted in the individual product-line statement(s) below, or in the individual product data sheet or owner's manual, beginning with the date of original purchase. If such malfunction occurs during the specified period, the product will be repaired or replaced (at our option) without charge. The product will be returned to the customer prepaid.

Exclusions and Limitations: The Limited Warranty does not apply to: (a) exterior finish or appearance; (b) certain specific items described in the individual product-line statement(s) below, or in the individual product data sheet or owner's manual; (c) malfunction resulting from use or operation of the product other than as specified in the

Table 1—Contents

Part No.	Quantity	Description
20654	3	3/8-16 lifting eyeut

EBK-2 Lifting Eyenut Attachment Kit

EBK-2 Lifting Eyenut Attachment Kit

product data sheet or owner's manual; (d) malfunction resulting from misuse or abuse of the product; or (e) malfunction occurring at any time after repairs have been made to the product by anyone other than EVI Audio Service or any of its authorized service representatives. **Obtaining Warranty Service:** To obtain warranty service, a customer must deliver the product, prepaid, to EVI Audio Service or any of its authorized service representatives together with proof of purchase of the product in the form of a bill of sale or receipted invoice. A list of authorized service representatives is available from EVI Audio Service at 10500 W. Reno Avenue, Oklahoma, OK 73127 (800/845-8727 or FAX 405/577-3274). **Incidental and Consequential Damages Excluded:** Product repair or replacement and return to the customer are the only remedies provided to the customer. Altec Lansing shall not be liable for any incidental or consequential damages including, without limitation, injury to persons or property or loss of use. Some states do not allow the exclusion or limitation of incidental or consequential damages so the above limitation or exclusion may not apply to you. **Other Rights:** This warranty gives you specific legal rights, and you may also have other rights which vary from state to state.

Altec Lansing Accessories are guaranteed against malfunction due to defects in materials or workmanship for a period of one (1) year from the date of original purchase. Additional details are included in the Uniform Limited Warranty statement.

For technical assistance, contact Technical Support at 800/234-6831 or 616/695-6831, M-F, 8:00 a.m. to 5:00 p.m. Eastern Standard time.

Specifications subject to change without notice.

Specifications

Lifting Shoulder Eyenuts:

3/8-16—eye inner diameter: 32 mm (1.25 in.)

Material:

Drop forged steel, black nickel plated

Net Weight:

0.33 kg (0.72 lb)

Shipping Weight:

0.44 kg (0.97 lb)

Table 2—Working Load Limit vs. Angle (8:1 safety factor)

Angle	0°	45°	90°
Load (kg [lb])	74 [163]	Not Rated	Not Rated

Figure 2—Rigging Point and Load Angle

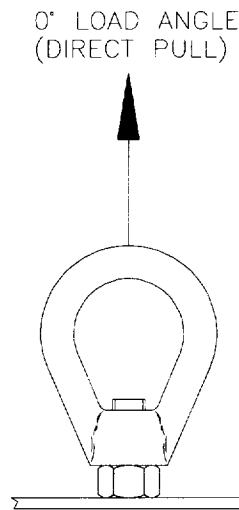
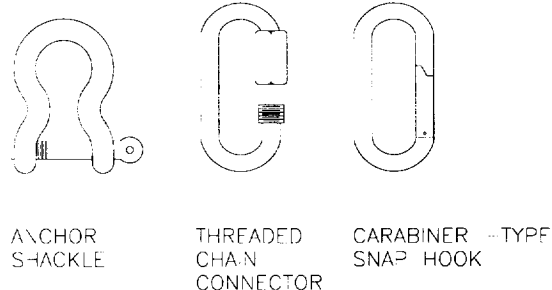


Figure 3—Examples of Useful Rigging Hardware



600 Cecil Street, Buchanan, MI 49107
616/695-6831, 616/695-1304 Fax