

TELEX

SAFE-1000 UHF

ENCRYPTED WIRELESS MICROPHONE SYSTEM

DIGITAL
ENCRYPTION

UHF
AGILE

950
CHANNELS

UP TO
16+
SIMULTANEOUS
SYSTEMS



TELEX[®]

SAFE-1000 UHF

ENCRYPTED WIRELESS MICROPHONE SYSTEM



Who's listening to your conversation?

While the wonders of wireless technology brought new freedom to communication, your conversations were available to whoever wanted to listen.

Until now.



THE S.A.F.E.-1000 WIRELESS MICROPHONE SYSTEM is available with a beltpack transmitter or a handheld microphone. The rugged cast magnesium beltpack transmitter is a compact design that meets the needs of most any wireless user. The handheld microphone is fully featured and includes a unique warmgrip™ handle.

So when the application calls for security, S.A.F.E.-1000 is the solution.

SECURE AUDIO FREQUENCY ENCRYPTION

NOW TELEX, CREATORS OF THE FIRST SECURE WIRELESS MICROPHONE, OFFERS FREEDOM AND SECURITY with the new S.A.F.E.-1000™ second generation encrypted wireless microphone system. The S.A.F.E.-1000 (Secure Audio Frequency Encryption) system brings airtight security to wireless transmissions of confidential information. Each and every matched S.A.F.E.-1000 system comes with its own unique security code. Not even another S.A.F.E.-1000 receiver can intercept your transmission.

THE S.A.F.E.-1000 OFFERS POWERFUL FEATURES like Advanced ClearScan™ automatic channel selections, 950 possible channels, and factory preset groups and channels that allow up to 16 simultaneous systems in one band. These tools make setting up a Fortune® 500 boardroom with 10 systems quick and easy.

WHEN CONFIDENTIALITY IS PRIORITY ONE, THE S.A.F.E. SYSTEM REPRESENTS A BREAKTHROUGH IN SECURITY FOR WIRELESS MICROPHONES. Based on technology adapted from Telex's intercom used by the National Football League, the S.A.F.E.-1000 system is ideal for the transmission of restricted or classified information over a wireless system. A scanner cannot intercept encrypted conversation when you're on a S.A.F.E.-1000 system, unlike other brands of wireless microphones.

SYSTEM CONFIGURATIONS AND COMPONENTS

- SAFE-1000L ENCRYPTED BODYPACK SYSTEM INCLUDES:**
- SAFE-1000 950 channel UHF receiver
 - SAFE-WT bodypack transmitter
 - ELM-22 micromini omni lav mic
 - Rack mount hardware for single/dual mount
 - 2 1/4 wave antennas
 - In-line power supply

- SAFE-1000WT BODYPACK SYSTEM SAME AS ABOVE WITH NO MIC**

- SAFE-1000HD ENCRYPTED HANDHELD SYSTEM INCLUDES:**
- SAFE-1000 950 channel UHF receiver
 - SAFE-HD EV 767a NDYM handheld transmitter
 - Rack mount hardware for single/dual mount
 - 2 1/4 wave antennas
 - In-line power supply

- SAFE-1000H/L ENCRYPTED COMBO SYSTEM INCLUDES:**
- SAFE-1000 950 channel UHF receiver
 - SAFE-HD EV 767a NDYM handheld transmitter
 - SAFE-WT bodypack transmitter
 - ELM-22S Omni Lapel microphone
 - Rack mount hardware for single/dual mount
 - 2 1/4 wave antennas
 - In-line power supply

- SAFE-WT UHF ENCRYPTED WIRELESS BODYPACK TRANSMITTER**
- 950 selectable channels
 - On/off switch
 - Metal housing
 - Tx power switch
 - Battery low led indicator
 - TA-4M mic connector
 - Operates on a single 9V battery

- SAFE-HD UHF ENCRYPTED WIRELESS HANDHELD TRANSMITTER**
- 950 selectable channels
 - On/off switch
 - Tx power switch
 - Battery low led indicator
 - EV N/D767a dynamic mic element
 - Operates on a single 9V battery

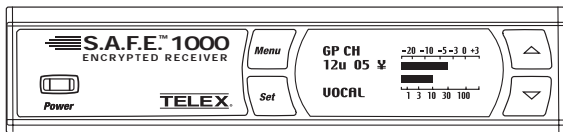
SECURITY SOLUTION

Accessories & Parts

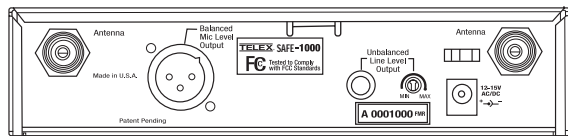
DESCRIPTION	MODEL #	ORDER #
Omnidirectional MicroMini™ Lapel Mic:	ELM-22S	70925001
Unidirectional MicroMini™ Lapel Mic:	ELM-33S	70926001
Headworn Cardioid Condenser Mic:	HM7	HM7
1/4 Wave Rx Antenna 600-746 (A/B):	ANU-14	879010
1/2 Wave Rx Antenna (A/B) (680-860 MHz):	FA-1	860031
1/2 Wave Antenna Bracket:	AB-2	71138000
Antenna/Power Distribution (A/B) (600-780 MHz):	UAD-2	71253000
Termination Plug for UAD-2:	TP-2	650095
Directional Rx Antenna (450-900 MHz):	ALP-450	71147000
Low Loss Coaxial Antenna Cable:	CXU-25 ft	71151025
	CXU-50 ft	71151050
	CXU-75 ft	71151075
	CXU-100 ft	71151100
1/4 Wave Bodypack Tx Antenna (A):	AN-Flex A (GREEN)	879220-4
1/4 Wave Bodypack Tx Antenna (B):	AN-Flex B (RED)	879220-5
1/4 Wave Super-Flex Tx Antenna (A):	AN-Sflex A (GREEN)	879538-4
1/4 Wave Super-Flex Tx Antenna (B):	AN-Sflex B (RED)	879538-5
Bodypack Pouch:	WP-1000	879553
767a Dynamic Head for SAFE-HT:	RC767A	71837000
RE510 Condenser Head for SAFE-HT:	RC510	71839000
Mic Stand Adapter for SAFE-HT:	MSA-1000	879564

SPECIFICATIONS

SAFE-1000 Receiver



FRONT PANEL



REAR PANEL

Controls

Front Panel: On/Off, menu, set, up, down buttons
 Rear Panel: 1/4 inch output level

Indicators

LCD Backlit Display: Group, channel, diversity, label, squelch, set-up screen, audio signal amplitude, RF signal strength.

Connectors

Back Panel: 1/4 inch unbalanced adjustable output
 XLR balanced output
 Antennas: Detachable 1/4 wave

RF Specifications

Frequency Range: A Band 680 – 704 MHz (TV Channels 49, 50, 51, 52)
 B Band 722 – 746 MHz (TV Channels 56, 57, 58, 59)
 Number of Channels: 950 possible (programmable in 25kHz steps)
 Diversity: DSP PosiPhase true diversity
 Receiver Type: synthesized PLL agile UHF
 Modulation Type: NFSK
 Squelch: Digital plus Amplitude
 FCC: Approved under Part 35

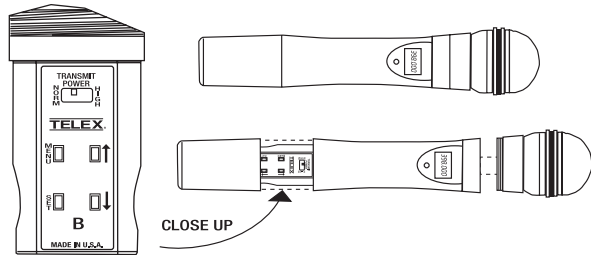
Audio Specifications

Frequency Response: 100 – 7000 Hz +/- 2 dB
 Encryption: 32 Bit (16 imbedded, 16 user assigned)
 Audio Output Level:
 Line Level: 8 mV - 0.775V RMS into a 100 k ohm load
 Balanced: -10 dBV max
 Distortion: Less than 1.0% (@1kHz)
 Signal to Noise Ratio: > 90 dB
 Dynamic Range: >90 dB

General Specifications

Power Supply: External 12 VAC 750mA in-line with cord
 Size: 1.72" H x 7.50" W x 8.38" D
 43.69mm H x 190.50mm W x 212.85mm D

SAFE-HT Handheld Transmitter



Controls

Power on/off
 Audio gain adjustment with 26 dB range
 Transmit power switch
 Menu, set, up, down buttons

Displays

LCD display (channel and group, frequency, battery level), red LED battery low indicator

Battery Life

7 hours with 9V alkaline (typical)

Antenna

Internal 1/2 wave

Microphone Elements

EV N/D 767a Dynamic or RE 510 Condenser (Available separately)

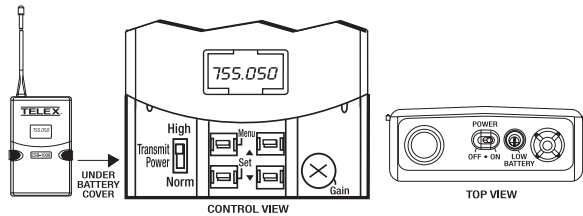
RF Output

Normal: 5 mW (typical)
 High: 50 mW (typical)

Size

10.5 in. long (26.8 cm)

SAFE-WT Bodypack Transmitter



Controls

Power on/off switch
 Audio gain adjustment with 40 dB range
 Transmit power switch
 Menu, set, up, down buttons

Indicators

Red LED low battery indicator
 LCD display (channel/group, frequency, battery level)

Battery Life

7 hours with 9V alkaline (typical)

Antenna

External 1/4 wave detachable

Connector

TA4M input for microphone
 Pin 1 ground, pin 2 mic input
 Pin 3 +5V bias, pin 4 +5V through 3k ohm

RF Output

Normal: 5 mW (typical)
 High: 50 mW (typical)

Case Material

Cast magnesium

Size

3.75 in. x 2.6 in. x .9 in.
 96 mm x 66 mm x 23 mm

TELEX COMMUNICATIONS

12000 Portland Avenue South, Burnsville, Minnesota 55337 U.S.A.
 TEL: 800-392-3497 • FAX: 952-736-4582

pro.sound@telex.com www.electrovoice.com/telex-wireless