



MA-1212

COMMERCIAL MIXER PAGING AMPLIFIERS

MA-1200 Series of EV Professional Mixer/Amplifiers



The MA-1200 series of professional rackmount mixer/amplifiers are designed for larger background music/paging and public address system installations where expandability and flexibility is the ticket. These new units are exceptional values, loaded with features and are easy to install in a variety of system designs.

The MA-1206 provides a powerful 60 watts of output power into 70v/100v or 8 Ohm loads. The MA-1212 has the same feature set but supplies twice the power at 120 watts. Both models have a variety of features to enable them to be customized to a wide range of background music and paging applications.

The units feature 12 separate input channels. Input channels 1-10 are designed to be used as either balanced or unbalanced low-Z microphone inputs or they can be switched to a line level signal. Phantom power is also available on any of the 10 inputs. A signal appearing at input 1 will automatically mute the other channels unless the mute function is defeated via a switch on the front panel. Inputs 11 and 12 are for auxiliary line-level sources such as tape or CD players. Mono or stereo signals may be applied to inputs 11 or 12. The left and right components of a stereo signal can be applied to the dual RCA phono jacks of these inputs and mixed together to drive the built-in monaural power amplifier. A rear panel paging input with gain control is provided for the paging output of a telephone system. An audio signal appearing at this input automatically mutes all other inputs.

A preamplifier output jack and power amplifier input jack permit the mixed output to be fed to an external signal processor (graphic EQ or compressor), and then returned to the built-in amplifier. The preamp output may be used to drive an additional power amp with its own set of speakers without interrupting the function of the built-in amplifier.

The speaker output is available at a barrier strip which includes terminals for driving low impedance loudspeaker loads, as well as 25, 70.7 or 100 volt distributed systems.

- 10 balanced mic or line inputs – all available with 24v phantom power!
- 2 auxiliary stereo summing inputs with 4 level sensitivity adjustment.
- 60 or 120 watt models available.
- Balanced line level output for adding additional power amplifiers.
- 24 volt powered operation available for emergency power requirements.
- Adjustable level telephone paging input.
- Independently adjustable low power monitor output.
- Integrated "rack ears" allow for rack mounting without additional accessories.



MA-1206

Step Up To Electro-Voice®



COMMERCIAL MIXER PAGING AMPLIFIERS SPECIFICATIONS

Key Markets and Applications

- Warehouses
 - Shopping malls
 - Retail stores
 - Churches
 - Office lobbies
 - Hotel conference rooms
 - Dentist/Doctor waiting rooms
- ... and any other installation involving background music and paging.

AMPLIFIER SECTION	MA-1212	MA-1206
Output Power (at 1 kHz):	120 Watts	60 Watts
Frequency Response	50-15,000 Hz (± 3 dB)	50-15,000 Hz (± 3 dB)
Inputs Sensitivity/Impedance—		
Inputs 1-10 Mic Setting:	0.3 mV/600 Ohm (balanced)	0.3 mV/600 Ohm (balanced)
Inputs 1-10 Line Setting:	75 mV/47 kOhm (balanced)	75 mV/47 kOhm (balanced)
Paging:	-20 dB m/600 Ohm (transformer isolated)	-20 dB m/600 Ohm (transformer isolated)
Power Amp In:	1 V/10 kOhm (unbalanced)	1 V/10 kOhm (unbalanced)
Auxiliary:	100 mV to 1 V (unbalanced)	100 mV to 1 V (unbalanced)
THD (at Rated Output):	<1% at 1kHz	<1% at 1kHz
Signal to Noise Ratio—		
Mic:	>52 dB	>52 dB
Auxiliary:	>65 dB	>65 dB
Paging:	>65 dB	>65 dB
Power Amp In:	>90 dB	>90 dB
Line Output Level/Impedance—		
Preamp Output:	1 V/1 kOhm (unbalanced)	1 V/1 kOhm (unbalanced)
Balanced Line Output:	500 mV/47 kOhm (unbalanced)	500 mV/47 kOhm (unbalanced)
Speaker Outputs:	4, 8 and 16 Ohm 25, 70.7 and 100-Volt	4, 8 and 16 Ohm 25-, 70.7- and 100-Volt
Tone Controls—		
Bass:	+ – 10 dB at 100 Hz	+ – 10 dB at 100 Hz
Treble:	+ – 10 dB at 10 kHz	+ – 10 dB at 10 kHz
Muting:	40 dB attenuation	40 dB attenuation
Protection:	3 independent Slo-Blo® fuses, primary A.C. and D.C.	3 independent Slo-Blo® fuses, primary A.C. and D.C.
Power Dissipation:	390 watts	215 watts
Power Supply:	108-132 V A.C., 50/60 Hz	108-132 V A.C., 50/60 Hz
Dimensions—		
Height:	15.0 cm (5.9 in.)	15.0 cm (5.9 in.)
Width:	48.0 cm (18.9 in.)	48.0 cm (18.9 in.)
Depth:	32.0 cm (12.6 in.)	32.0 cm (12.6 in.)
Net Weight:	12.0 kg (26.5 lb)	9.0 kg (19.9 lb)
Shipping Weight:	12.7 kg (28.0 lb)	9.7 kg (21.4 lb)



MA Series

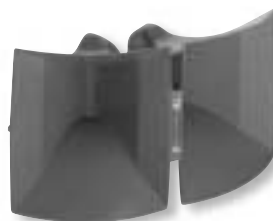
These amplifiers are ideal for use with the EVID ceiling and surface mount speaker products as well as the extensive line of commercial Paging horns and drivers.



EVID 4.2



EVID C4.2



Cobraflex III



PA-430T

Distributed by:

Step Up To Electro-Voice®



12000 Portland Ave. South, Burnsville, MN 55337
Phone: 952-884-4051 www.electrovoice.com