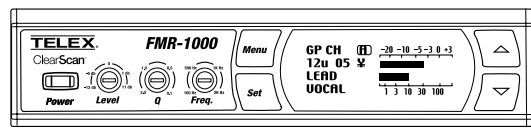
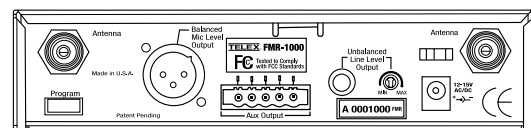


SPECIFICATIONS

FMR-1000 Receiver



FRONT PANEL



REAR PANEL

Controls

Front Panel: On/Off, menu, set, up, down buttons, parametric EQ (level -12 dB to +12 dB, Q 3.0 - 0.1, frequency 100 - 2 kHz)
 Rear Panel: 1/4 inch output level

Indicators

LCD Backlit Display: Group, channel, diversity, label, squelch, set-up screen, transmitter battery level, audio signal amplitude, RF signal strength.

Connectors

Back Panel: 1/4 inch unbalanced adjustable output
 XLR balanced output
 USB programming port
 5 pin strip connector
 Pin 1: Transmitter "On" TTL signal
 Pin 2: Battery low TTL signal
 Pin 3: Logic ground
 Pin 4: Unbalanced line level audio output
 Pin 5: Audio common (ground)

Antennas Detachable 1/4 wave

RF Specifications

Frequency Range: A Band 680 - 704 MHz (TV Channels 49, 50, 51, 52)
 B Band 722 - 746 MHz (TV Channels 56, 57, 58, 59)
 Number of Channels: 950 possible (programmable in 25kHz steps)
 Diversity: DSP PosiPhase true diversity
 Receiver Type: synthesized PLL agile UHF
 RF Sensitivity: <0.8uV for 12 dB SINAD
 FCC type acceptance: Approved under Part 15

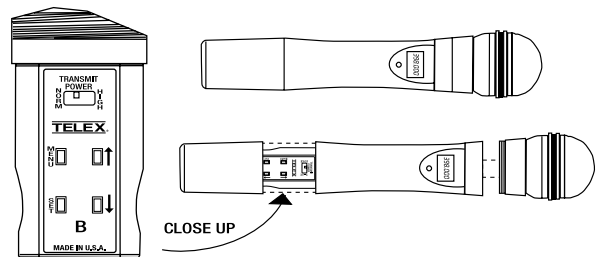
Audio Specifications

Frequency Response: 100 - 15 kHz +/- 2 dB microphone
 30 - 15 kHz +/- 2 dB instrument
 Audio Output Level:
 Line Level: 8 mV - 0.775V RMS into a 100 k ohm load
 Balanced: -20 dBV max (@40kHz deviation)
 Distortion: Less than 0.5% (@1kHz, 40kHz deviation)
 Signal to Noise Ratio: > 94 dB
 Dynamic Range: >100 dB

General Specifications

Power Supply: External 12 VAC 750mA in-line with cord
 Size: 1.72" H x 7.50" W x 8.38" D
 43.69mm H x 190.50mm W x 212.85mm D

HT-1000 Handheld Transmitter



Controls

Power on/off
 Audio gain adjustment with 26 dB range
 Transmit power switch
 Menu, set, up, down buttons

Displays

LCD display (channel and group, frequency, battery level), red LED battery low indicator

Battery Life

8 hours with 9V alkaline (typical)

Antenna

Internal 1/2 wave

Microphone Elements

EV N/D 767a Dynamic or RE 510 Condenser

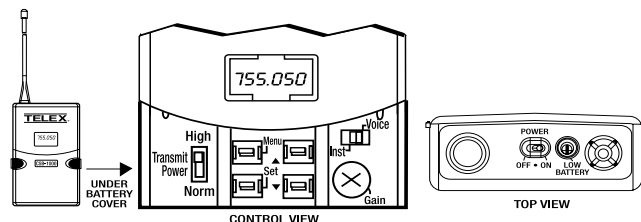
RF Output

Normal: 5 mW (typical)
 High: 50 mW (typical)

Size

10.5 in. long (26.8 cm)

WT-1000 Bodypack Transmitter



Controls

Power on/off switch
 Audio gain adjustment with 40 dB range
 Transmit power switch
 Microphone/Instrument switch (0, -20 dB)
 Menu, set, up, down buttons

Indicators

Red LED low battery indicator
 LCD display (channel/group, frequency, battery level)

Battery Life

8 hours with 9V alkaline (typical)

Antenna

External 1/4 wave detachable

Connector

TA4M input for microphone
 Pin 1 ground, pin 2 mic input
 Pin 3 +5V bias, pin 4 +5V through 3k ohm

RF Output

Normal: 5 mW (typical)
 High: 50 mW (typical)

Case Material

Cast magnesium

Size

4.4 in. x 2.6 in. x .9 in.
 111 mm x 66 mm x 23 mm



FMR-1000 UHF

WIRELESS MICROPHONE SYSTEM



UHF

AGILE

950 CHANNELS

UP TO 16+ SIMULTANEOUS SYSTEMS



TELEX COMMUNICATIONS

12000 Portland Avenue South, Burnsville, Minnesota 55337 U.S.A.
 TEL: 800-392-3497 • FAX: 952-736-4582

pro.sound@telex.com www.electrovoice.com/telex-wireless

SPECIFICATIONS SUBJECT TO CHANGE WITHOUT NOTICE.

© 2001 Telex Communications PA-20540 12/01



FMR-1000 UHF

WIRELESS MICROPHONE SYSTEM

**Power,
Performance
Flexibility,
and Simplicity.**



Key Features

- Up to 16 systems can operate simultaneously from the pre-set channels. For more than 16 channels, Telex can help you with the coordination and channel selection.
- Advanced ClearScan™, automatic group and channel selections, for quick and simple system setup.
- Over 950 possible channels.
- Front panel parametric equalizer with Level, Q, and Frequency controls for sound shaping without a mixing board.
- Backlit LCD Display shows the Group/Channel, transmitter battery status, diversity operation, RF and Audio level meters, and space for a custom label.
- Cast magnesium bodypack transmitter, and over-molded Warm-Grip™ handheld transmitter with detachable microphone elements.
- Unique battery circuit means there is no way to put the battery in wrong.
- Patented DSP Posi-Phase™ Diversity System.
- Three Year Warranty

The FMR-1000 UHF wireless microphone system is a breakthrough frequency-agile system that mixes the power of fully programmable channels with the simplicity of Advanced ClearScan. With a push of two buttons, Advanced Clear Scan finds the clearest group of channels and you can set up 16 system installations in minutes with confidence you have the clearest channels in the clearest group. A unique sound check screen allows one person to walk test a transmitter with tangible results. For clear vocals, the HT-1000 handheld microphone features a choice between two Electro-Voice™ microphone elements, the N/DYM® 767a dynamic with VOB™ (Vocally Optimized Bass) technology and the new RE 510 professional condenser element.

SYSTEM CONFIGURATIONS AND COMPONENTS

FMR-1000L

BODYPACK SYSTEM INCLUDES:

- FMR-1000 950 channel UHF receiver
- WT-1000 bodypack transmitter
- ELM-22 micromini omni lav mic
- Rack mount hardware for single/dual mount
- Two 1/4 wave antennas
- In-line power supply

FMR-1000WT

BODYPACK SYSTEM INCLUDES:

Same as above without microphone

FMR-1000HD

HANDHELD SYSTEM INCLUDES:

- FMR-1000 950 channel UHF receiver
- HT-1007 EV 767a NDYM handheld transmitter
- Rack mount hardware for single/dual mount
- Two 1/4 wave antennas
- In-line power supply

FMR-1000H/L

COMBO SYSTEM INCLUDES:

- FMR-1000 950 channel UHF receiver
- HT-1007 EV 767a NDYM handheld transmitter
- WT-1000 bodypack transmitter
- ELM-22S Omni Lapel microphone
- Rack mount hardware for single/dual mount
- Two 1/4 wave antennas
- In-line power supply

FMR-1000

UHF SYNTHESIZED WIRELESS MIC RECEIVER:

- Posi-Phase Diversity*
- Adjustable amplitude squelch
- 950 selectable channels
- Balanced XLR output
- 1/4" adjustable line output
- Rack mount hardware
- Two 1/4 wave antennas and in-line power supply

WT-1000

UHF SYNTHESIZED WIRELESS BODYPACK TRANSMITTER:

- 950 selectable channels
- On/off switch
- Metal housing
- Tx power switch
- Battery low led indicator and TA-4M mic connector
- Mic/Instrument switch
- Operates on a single 9V battery

HT-1000D

UHF SYNTHESIZED WIRELESS HANDHELD TRANSMITTER:

- 950 selectable channels
- On/off switch
- Tx power switch
- EV NDYM 767a dynamic mic element with VOB
- Operates on a single 9V battery

HT-1000C

UHF SYNTHESIZED WIRELESS HANDHELD TRANSMITTER:

- 950 selectable channels
- On/off switch
- Tx power switch
- EV RE510 condenser mic
- Operates on a single 9V battery

*Posi-Phase™ refers to Telex's various patented forms of diversity incorporated in its receivers.

Optional Accessories

ORDER NUMBER	MODEL NUMBER	COLOR	DESCRIPTION
879010	ANU-14	—	1/4 Wave Rx Antenna, 600-746 MHz, (A/B)
870658-5	CLA-5	Green	1/2 Wave Rx Antenna (A) (680 - 730 MHz)
870658-6	CLA-6	Orange	1/2 Wave Rx Antenna (B) (720 - 760 MHz)
71138000	AB-2	—	1/2 Wave Antenna Bracket (520 - 760 MHz)
71146000	AD-450	—	Antenna/PWR Distribution (A/B)
650095	TP-2	—	Termination Plug for AD-450
71147000	ALP-450	—	Log Periodic Directional Rx Antenna (450 - 900 MHz)
71151025	CXU-25	—	25 Ft. Low Loss Coaxial Antenna Cable
71151050	CXU-50	—	50 Ft. Low Loss Coaxial Antenna Cable
71151075	CXU-75	—	75 Ft. Low Loss Coaxial Antenna Cable
71151000	CXU-100	—	100 Ft. Low Loss Coaxial Antenna Cable
879220-4	AN-Flex A	Green	1/4 Wave Bodypack Tx Antenna (A) (636 - 725.9 MHz)
879220-5	AN-Flex B	Red	1/4 Wave Bodypack Tx Antenna (B) (720 - 825.9 MHz)
879538-4	AN-Sflex-A	Green	1/4 Wave Bodypack Tx Super Flex Antenna A Band
879538-5	AN-Sflex-B	Red	1/4 Wave Bodypack Tx Super Flex Antenna B Band
879553	WP-1000	—	Leather Bodypack Pouch
879526	MAC-G2	—	Guitar Cord
64420001	RSB-2	—	Referee Mute Switch Box (requires bodypack modification)
640156	SCB-1	—	Strip terminal Mating Block

Simply Powerful