

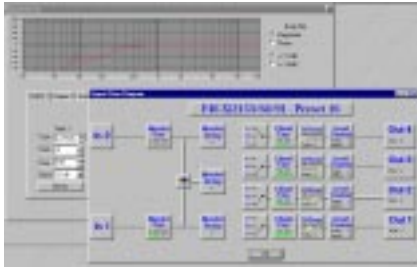
Dx38 Loudspeaker Controller



PROFESSIONAL

A U D I O

P R O D U C T S



Its 2-in/4-out configuration makes the Dx38 the ideal controller in any 2-, 3- and 4-way loudspeaker application. Each output may be assigned to any input or sum of the inputs. The Dx38 addresses many different sound-system configurations, and is factory programmed for a number of EV speaker systems

- **2-in/4-out system controller with crossover, parametric EQ, shelving EQ, low- and high-pass, delay, compressor and limiter functions**
- **48-bit algorithms**
- **24-bit conversion**
- **>115-dB dynamic range**
- **Computer and MIDI controllable**
- **Flexible input/output routing**

EVERYWHERESM