

**SPECIFICATIONS**

Frequency Response: 35 Hz to 15 kHz, +/- 1 dB  
(Ref. 1 kHz)

Power Capacity: 150 Watts

Total Harmonic Distortion: <1% from 35 Hz to 15 kHz  
(Ref. 1 kHz)

**ELECTRICAL CONNECTIONS**

The autoformer consists of a single winding with multiple taps. It is intended to provide impedance and voltage conversions without primary to secondary isolation.

Any combination of taps may be used as the primary (source) and secondary (load) connections.

Figure 1 shows the layout of taps and their voltage and impedance ratios relative to the common terminal.

The transformer wires are color coded and are identified on the body of the autoformer by tap number and impedance ratio.

**DESCRIPTION**

The Altec Lansing Model 15067 Autoformer is designed to provide maximum flexibility in matching a wide variety of loudspeaker loads to power amplifier outputs.

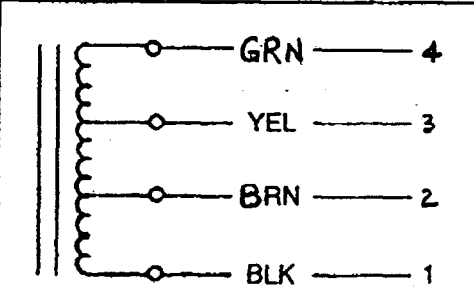
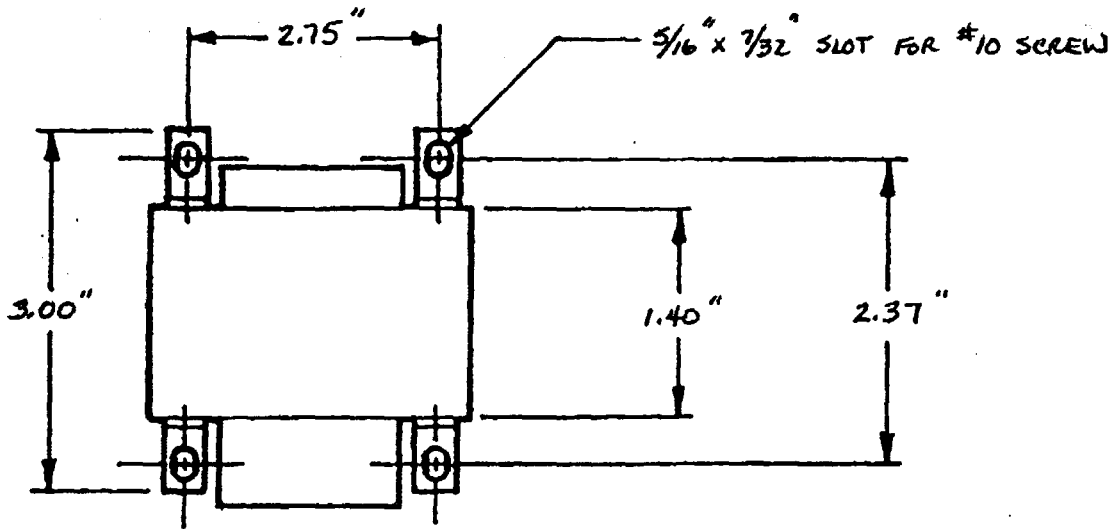
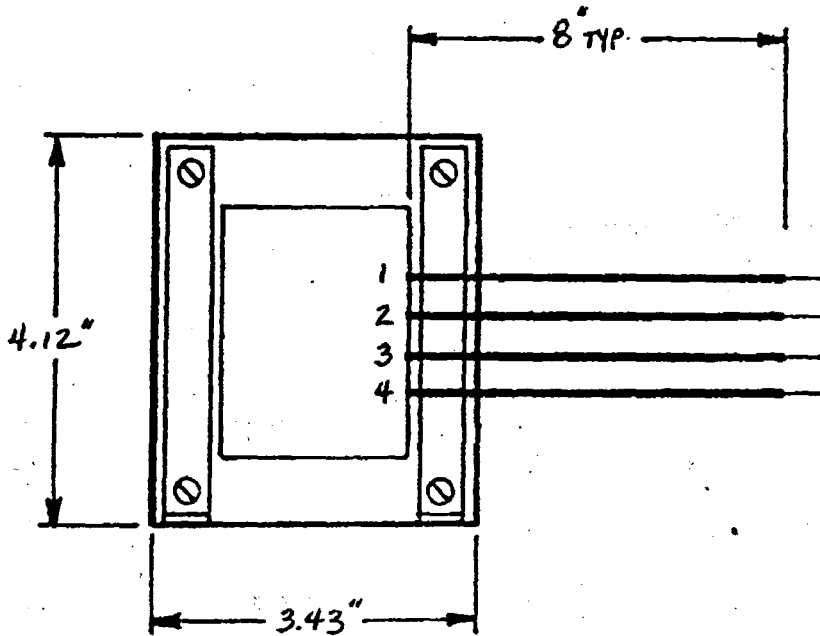
TAP	#	Z	VOLTAGE RATIO	IMPEDANCE RATIO
 GRN	4	16	1.0	1.0
YEL	3	8	0.707	0.5
BRN	2	4	0.5	0.25
BLK	1	COMMON		

Figure 1



TOP VIEW



SIDE VIEW

FIGURE 2

**ALTEC**  
**LANSING**

P.O. BOX 26105, OKLAHOMA CITY, OK 73126-0105, U.S.A.

© ALTEC LANSING CORPORATION