



Electro-Voice® Telex® Wireless Guide

October 2007

Why Choose EV or Telex Wireless?

EV revolutionized the wireless market with the introduction of ClearScan™ technology. ClearScan automatically scans all 1112 channels and shows you the clearest channels available, you may never need to go beyond the front panel receiver controls. From one system to many working simultaneously, ClearScan™ reduces the opportunity for "Surprise Audio" and comes standard on ALL EV and Telex wireless systems.

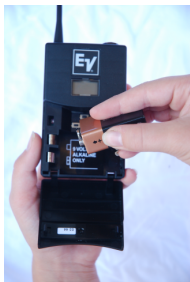


We sweat the details...



Most other wireless systems use BNC connectors. The "B" stands for "Bayonet" The bayonet portion of this connector tends to get resistive over time, and can cause intermodulation problems. That means crosstalk, interference, and all those nightmare stories you hear from people who've had a bad experience with wireless. EV and Telex use TNC connectors. The "T" stands for "Threaded". Simply put, the threaded connection is a far more reliable contact than the bayonet type, and it won't fail over time. Antennas are the main link between your voice and your audience. Don't buy wireless systems that compromise that important connection.

Introducing the Smart Battery Compartment



It's dark, you're backstage fumbling with a beltpack that needs new batteries, you're frustrated, you're rushing... The beltpack gets swiped up and hooked up only to find out that the batteries were put in wrong! How embarrassing! Well, with EV's SmartBattery packs, that won't happen! The batteries simply **cannot** be put in wrong. The end. Everyone's happy. **Especially you, Mr. Soundman. Available on all EV and Telex Wireless Bodypack Systems.**



What's Inside?

Page 2 - REV UHF Wireless

Page 3 - RE-2 & RE-2 Pro Wireless System

Page 4 - PC Boundary Mic - Wireless

Page 5 - REV-Link PC Software Up Close

Page 6 - FMR-500 Wireless System

Page 7 - SAFE-1000 Wireless System

Page 8 - SoundMate Listening System

Page 9 - Multi-channel Systems

Page 10 - Wireless Microphone Accessories

Page 11 - Wireless Accessories

Page 12 - A Word about Headsets and Lavaliers...

CALL STARIN MARKETING AT 800-846-5606 IF YOU HAVE A TECHNICAL QUESTION ON WIRELESS



Professional Wireless Microphones



Interchangeable Handheld allows you to switch mic capsules!

40+ simultaneous channels are possible with the REV!

Headphone jack for audio monitoring with volume control. REV-D lets you monitor either or both receivers at the same time!



Bright backlit LCD Display Shows battery gauge, and all menu functions.

Single receiver (REV-S), or two receivers in a single rack space (REV-D)

Backlit LCD Display shows the Group/Channel, transmitter battery status, diversity operation, RF and Audio level meters, and space for a custom name

REV's optimized analog audio path was developed to provide the truest representation of a wired microphone sound possible in a wireless system. In addition, REV-Link™ PC software enables remote monitoring, control and programming over a CAN bus connection through an EV UCC-1 converter or EV Netmax N8000 controller.

- **Ordering is Ala Carte: select receiver(s) then select a transmitter(s)**
- **950 Possible frequencies in 24MHz operating band**
- **Optimized audio path to provide true wired microphone sound**
- **5mW or 50mW transmit power on every transmitter**
- **Advanced ClearScan™ scans entire band for the clearest channel and group of channels (Does not just stop at first available channel).**
- **Keep it together: You can monitor all channels, label them, and set up alarms if a battery is dying.**



REV-Link Screenshot
More on Page 5

Available Transmitters



REV-BP Bodypack Transmitter

A rugged cast magnesium body with removeable/replaceable antennas. 8 hours on a single 9V battery



REV-PH Presentation Handheld

ABS Plastic handheld transmitter with comfortable contour. Very lightweight. Interchangeable mic capsules! 8 hours on a single 9V battery



REV Concert Handheld

Metal handheld, not much larger than a wired mic with the cable connected Very rugged. Interchangeable mic capsules! 10 hours on two AA Batteries

Need to learn more about the REV? Go to: <http://www.electrovoice.com/productfamilies/83.html>

CALL STARIN MARKETING AT 800-846-5606 IF YOU HAVE A TECHNICAL QUESTION ON WIRELESS

UHF Wireless Microphone System

ADVANCED
ClearScan™

Balanced XLR/Line Level output and 1/4" unbalanced connector with adjustable line level output.

Detachable antennas



Rack kit and antenna cables included with RE-2 Pro System

SmartBattery compartment: Even if you put the 9V in the wrong way, it still works!

Cast Magnesium body pack with RE-2 Pro

High impact ABS plastic transmitter with contour grip—very lightweight.

4 different Handheld Capsules!

Metal (NOT Plastic) receiver



While extremely affordable, the RE-2 is designed for those that are serious about their sound. The RE-2 can do the work for you, or you can make all the adjustments yourself. Squelch, transmit power, channel selection and more are all available to you on the RE-2 receiver. With ClearScan automatically scanning all 1112 channels, and showing you the clearest channels available, you may never need to go beyond the RE-2s front panel controls.

RSB-2



Optional RSB-2 for the BPU-2PRO-REF and REV-BP-REF bodypacks



Available Systems:

- RE2-N2 Receiver + N/D267a handheld transmitter
- RE2-N7 Receiver + N/D767a handheld transmitter
- RE2-410 Receiver + RE410 handheld transmitter
- RE2-510 Receiver + RE510 handheld transmitter
- RE2-G Receiver + bodypack transmitter + MAC-G3 guitar cord
- RE2-BP Receiver + bodypack transmitter
- RE2-L10 Receiver + bodypack transmitter + OLM10 lavalier mic
- RE2-L21 Receiver + bodypack transmitter + ULM21 lavalier mic
- RE2-E Receiver + bodypack transmitter + RE97 headworn mic (beige or brown)
- RE2 Combo Receiver + N/D267a handheld + bodypack transmitter + ULM21 lavalier mic



EV's lightest headworn mic is now available in an RE-2 system.

Need to learn more about the RE-2? Go to: <http://www.electrovoice.com/productfamilies/66.html>

CALL STARIN MARKETING AT 800-846-5606 IF YOU HAVE A TECHNICAL QUESTION ON WIRELESS

The PolarChoice Story...

With EV's innovative PolarChoice family, you electronically select the right pickup pattern for your project on the microphone itself. No buying, stocking, and eventually losing a bunch of mic capsules with different pickup patterns. The PolarChoice Satellite lineup is all completely wireless and works with any EV or Telex wireless bodypack system.

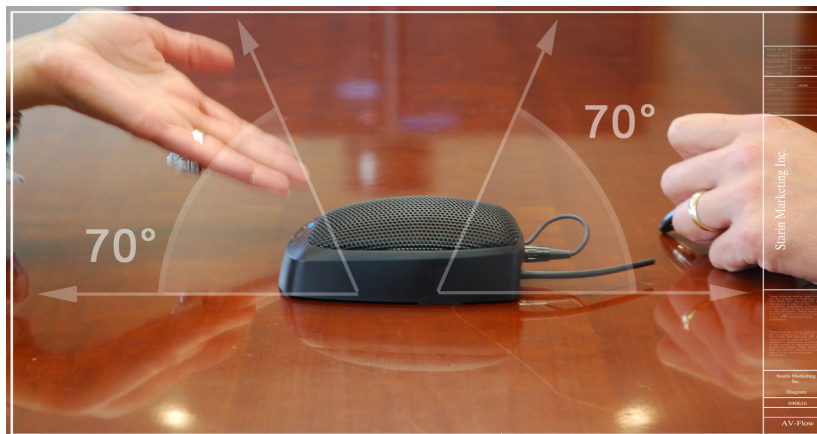
The PolarChoice PC Satellite....

Is a challenging acoustical environment making intelligibility next to impossible in your board-room installation? The PolarChoice PC Satellite microphone is a completely wireless podium microphone that gets the mic as close to the person talking as possible. In gooseneck lengths of 5, 12, and 18 inches, we have the lengths to cover any application.



The PC Boundary Satellite...

The EV PC Boundary Satellite microphone is revolutionary in it's simplicity. Completely wireless it's difference lies in it's pickup patterns. Select the Figure 8 pickup pattern, and you're using one mic to pick up both sides of the table. Sounds like you've just improved your bottom line again!



Select the Figure 8 pattern, and the PC Boundary Microphone picks up both sides of the table. One mic, two people!

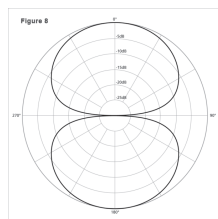
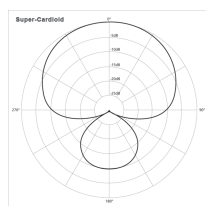
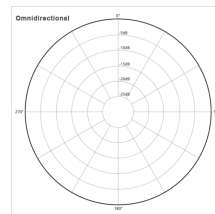


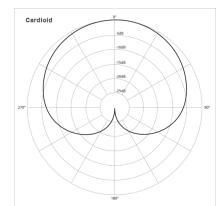
Figure 8



Super-Cardioid



Omnidirectional



Cardioid

Need to learn more about the PolarChoice Satellite Family? Go to: <http://electro-voice.com/products/>

CALL STARIN MARKETING AT 800-846-5606 IF YOU HAVE A TECHNICAL QUESTION ON WIRELESS



REV-Link PC Software Up Close

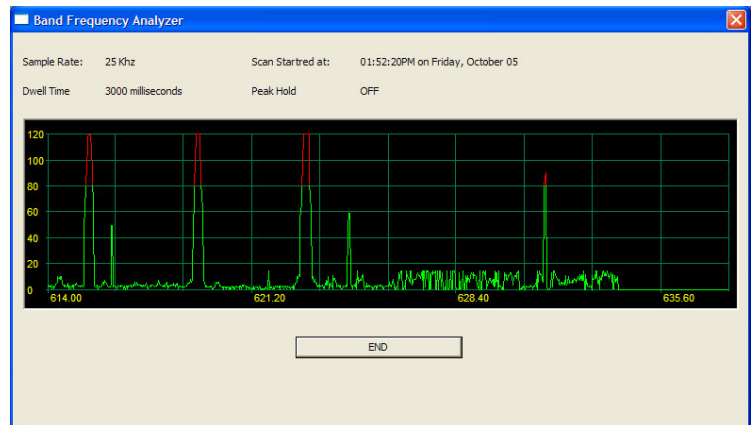
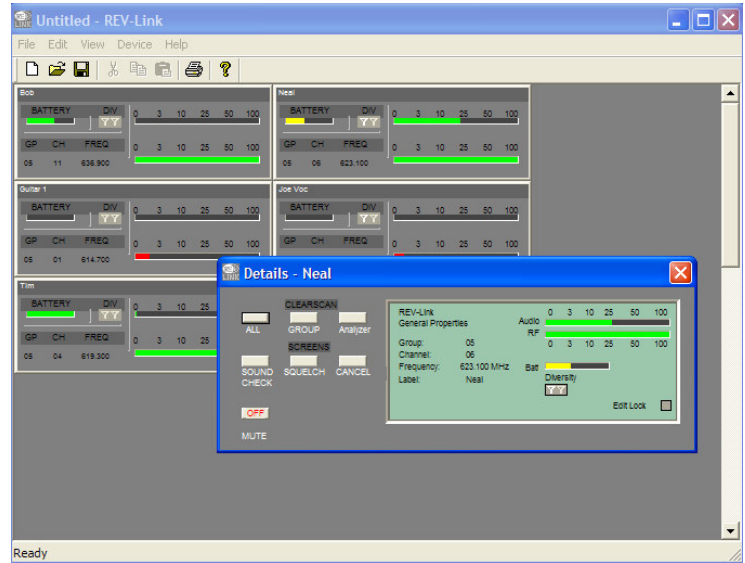
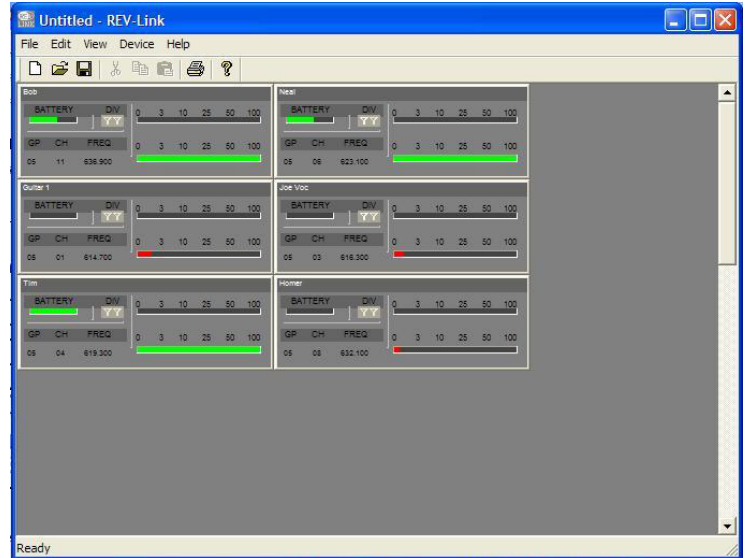
REV-Link... What is it, anyway?

The REV-Link Application allows the user to monitor audio level, signal strength, battery level, group, channel, frequency and other parameters of the REV Receiver. The application enables the user to run ClearScan, Sound Check, an analyzer, and other features on the REV Receiver from the REV-Link Application. Using Sound Check you can walk test the performance area. There is a Peak Hold Audio Meter which allows you to set the transmitter gain as high as possible which maximizes the signal to noise ratio. A drop Counter which will tell you if you are exceeding the range of the wireless system or having some interference problems. If a drop out occurs you can add a Drop Out Tone, which will produce a 1kHz tone each time you walk into a drop out area.

The REV-Link software interfaces to the REV receivers through either the UCC-1 Can Bus interface or Netmax N8000 DSP processor. Selecting the CAN BUS Address function will allow you to assign a unique address for use with the REVLink and IRIS-NET computer software.

The NetMax N8000

The NetMax N8000 is the central player in the IRIS-Net solution. It offers an extremely flexible hardware platform that allows for field level customization of the unit to nearly any application. This customization goes far beyond what is available today from other platforms. Everything from the matrix size and configuration to the processing power can be customized in the field, making it easy to design the best solution value for the customer. Now EV amps, DSP, wireless and many other devices can reside in one software platform. That's the beauty of Iris-Net.



Need to learn more about the NetMax N8000? Go to: <http://electro-voice.com/productfamilies/29.html>

CALL STARIN MARKETING AT 800-846-5606 IF YOU HAVE A TECHNICAL QUESTION ON WIRELESS

FMR-500 Wireless System

ADVANCED
ClearScan™

UHF Wireless Microphone System

SmartBattery compartment: Even if you put the 9V in the wrong way, it still works!

Balanced XLR/Line Level output and 1/4" unbalanced connector with adjustable line level output.

High impact ABS plastic transmitter with contour grip—very lightweight.

EV's rugged design stands up to the extreme working conditions of Megadeth

Detachable antennas



- Up to 20 systems can operate simultaneously from the pre-set channels on a mix of the three operating bands. For more than 10 channels, Telex will help with band selection and channel coordination for your application.
- Advanced ClearScan™, automatic group and channel selections, for quick and simple system setup.
- Over 950 possible channels.
- Front panel parametric equalizer with Level, Q, and Frequency controls for sound shaping without a mixing board.
- Backlit LCD Display shows the Group/Channel, transmitter battery status, diversity operation, RF and Audio level meters, and space for a custom label.
- Cast magnesium bodypack transmitter, and over-molded Warm-Grip™ handheld transmitter with detachable microphone elements.
- Unique battery circuit means there is no way to put the battery in wrong.
- Patented DSP Posi-Phase™ Diversity System.
- All required rack mount hardware and front mount antenna cables are included with all FMR-500 systems
- Three Year Warranty



HT-1007
N/DYM 767A

WT-1000

Need to learn more? Go to: <http://www.telex.com/wirelessmicrophones/Product.aspx?MarketID=14>

CALL STARIN MARKETING AT 800-846-5606 IF YOU HAVE A TECHNICAL QUESTION ON WIRELESS

SAFE-1000 Wireless System

The Most Inexpensive and Flexible Encrypted Wireless System On The Market



Ever hear the term, ***"This isn't to leave this boardroom..."***? We all have. You probably can trust your employees, but anyone with a \$50 scanner in the parking lot can pick up whatever is being transmitted on any wireless system available today, ***EXCEPT a SAFE1000 Encrypted wireless system.***

When confidentiality is priority one, the SAFE system represents a breakthrough in security for wireless microphones. Based on technology adapted from Telex's intercom used by the National Football League, the SAFE-1000 system is ideal for the transmission of restricted or classified information

over a wireless system. A scanner cannot intercept encrypted 1000 system, unlike other brands of wireless microphones.

Available Systems:

- SAFE-1000 WT BODYPACK SYSTEM (same as SAFE-1000 L with no mic)
- SAFE-WT UHF ENCRYPTED WIRELESS BODYPACK TRANSMITTER
- SAFE-HD UHF ENCRYPTED WIRELESS HANDHELD TRANSMITTER
- SAFE-1000 L BODYPACK SYSTEM
- SAFE-1000 H/L COMBO SYSTEM
- SAFE-1000 HD ENCRYPTED HANDHELD SYSTEM



Need to learn more? Go to: <http://www.telex.com/wirelessmicrophones/Product.aspx?MarketID=14>

CALL STARIN MARKETING AT 800-846-5606 IF YOU HAVE A TECHNICAL QUESTION ON WIRELESS

SoundMate Assistive Listening Systems

Assistive Listening Systems

Telex SoundMate assistive listening systems are a necessary requirement for public spaces, and a welcome addition to Houses of Worship, theaters, or any environment that requires public speaking. Available in portable versions for outdoor, or mobile applications as well.



ST-300 Transmitter

Front:

- 17 user selectable frequencies
- Headphone jack with adjustable level
- Panel controls and LCD display

Back:

- Balanced XLR-3F, unbalanced 1/4" input



SR-50 Receiver

- Operates on one of the 17 fixed-band frequencies
- Raised volume control knob
- Recessed headphone jack



SR-400 Receiver

- Advanced digital PLL synthesizer
- 72-76 MHz band
- High frequency contour filter and boost switch
- Enhanced Dynamic Range (EDR) for better audio clarity in translation and other applications



PST-170 Transmitter

- May be set to any of the 17 channels in 72-76 MHz band
 - Includes small lapel microphone
 - 2 audio input jacks



SM-2 SYSTEM Includes:

- (1) ST-300 base transmitter
- (4) SR-50 receivers
- (4) SEB-1 earbuds
- (1) SoundMate™ wall plaque (SM case sold separately)

SMP-2 System includes:

- (1) PST-170 portable belt pack
- (6) SR-50 single channel receivers
- (6) HED-2 collapsible headphones
- (14) AA Alkaline batteries
- (1) Deluxe system carrying case
- (1) HM-2 head worn microphone

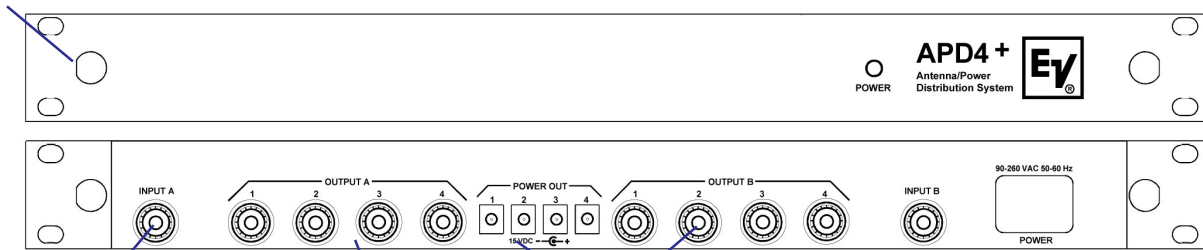
Need to learn more? Go to: <http://www.telex.com/wirelessassistive/Category.aspx?MarketID=15&CategoryID=62>

CALL STARIN MARKETING AT 800-846-5606 IF YOU HAVE A TECHNICAL QUESTION ON WIRELESS

Multi-Channel Systems

The EV and Telex wireless systems allow you to run from 1 to 44 (depends on model) transmitters simultaneously. Use the information below to help design a system using the APD4+. The APD4+ provides diversity antenna and power connections for up to four receivers. By cascading the APD4+ up to 44 channels of receive can be run from just two antennas. With the REV Dual receiver up to 44 channels of receive can be run from two antennas and just one APD4+. All unused antenna outputs must be terminated with a TP-2 termination plug.

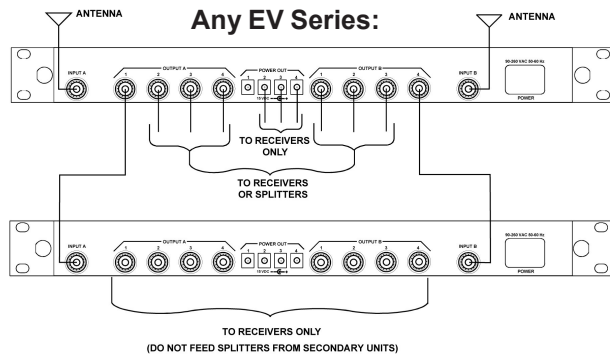
Front antenna hookup option



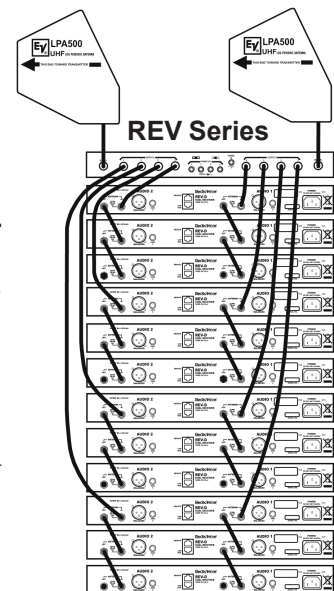
Rear antenna hookup

RF signal distribution

DC output for receiver power

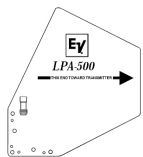


Note, do not use panel mount antennas when rack mounting receivers or APD4.

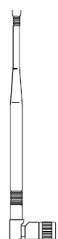


Antenna Options

1/4-wave antennas are supplied with all EV systems. While they do provide adequate performance, some applications are best suited by these optional antennas.

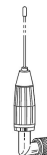


LPA-500 Wideband Antenna (680-870 MHz). The LPA-500 offers the best performance and broadest bandwidth available. It comes with a variety of mounting hardware and 10 feet of low loss coaxial cable.



FA-500 Wideband 1/2 wave Flexible passive Antenna (680-870 MHz). Use in applications from remote mounting on top of rack (AB-2) to front-panel use (non rack mount). Also use the UAA-500 to boost the signal.

CLA 1/2 wave narrow-band antenna series. Use portable applications where no remote mount is needed, choose a specific frequency range for application.



Wireless Microphone Accessories



MAC-2 XLR to TA4F adapter cord

RSB-2 Referee mic switch box (TA4F) (For WT-1000 and BPU2-PRO Only)

Note: bodypack transmitters must be modified for use with RSB switch box

PH23 Headworn unidirectional mic with TA4F

PH21 Headworn unidirectional mic with TA4F

SCHS-745/746 Special Projects headworn mics with TA4F
(746 is water-resistant/for aerobics use)

ELM-225 Premium omnidirectional lapel mic with TA4F

ELM-335 Premium unidirectional lapel mic with TA4F



On Any Given Sunday (or Saturday, or Friday night) Telex Wireless technology is at work on the sidelines, and during the game.

Wireless Accessories



APD4+ The One Antenna Divider Used On All EV and Telex Wireless Systems. Powers 4 wireless systems and provides antenna distribution.

RM-D Rack-mount kit - double (for two receivers) works with FMR-1000, FMR-500, FMR-70 and SAFE-1000 receivers

RM-S Rack-mount kit - single (for one receiver) works with FMR-1000, FMR-500, FMR-70 and SAFE-1000 receivers

ALP-450 Directional log periodic UHF antenna (450 - 900 MHz) with mounting hardware & 10-foot coax

TP-2 50 ohm TNC termination plug for use with UAD-4, AD-450

UAA-500 Wideband RF Antenna Amplifier for use with UAD-4.

ANU-14 1/4-wave UHF antenna for use with FMR-1000, FMR-500, and SAFE-1000

CLA-X 1/2-wave UHF antenna (X denotes frequency band)

CXU-X Low-loss coax cable (X designates length, 25, 50, 75 or 100) for use with remote mount antennas

AB-2 Universal mounting bracket for 1/2-wave antennas, with 10-foot coax cable

... A word about Headsets and Lavaliers...



When to use a Headset...

Whenever possible, consider using a headset microphone. Some consultants refuse to specify a lavalier microphone any more. Why? To maximize gain out of your system, it is always best to place the microphone as close to the mouth as possible. A headset mic gets the capsule as close to the source as it can, and when you move your head, the headset microphone moves with you, always maintaining the same distance to the mic, giving you dependable audio every time.



EV's new fully adjustable dual over the ear RE97-2TX.



EV's new RE97-2TX Boom Headset

When to use a Lavalier...

Lavaliers are handy for theatrical applications, because they can blend in with costumes, and seem less obtrusive. Some people just don't like to wear headsets, but with EV's new RE97TX2, the headset mic weighs almost nothing, and most users forget they are even wearing it.

					
OLM 10	ULM 21	RE 90 TX	RE92 TX	HM 2	HM 7
<ul style="list-style-type: none"> • Lavalier mic • Includes accessories (shown) 	<ul style="list-style-type: none"> • Lavalier mic • Includes accessories (shown) 	<ul style="list-style-type: none"> • Lavalier mic • Top-class • Ultra-miniature • Includes accessories (shown) 	<ul style="list-style-type: none"> • Lavalier mic • High-Performance • Includes accessories (shown) 	<ul style="list-style-type: none"> • Headset mic • Includes accessories (shown) 	<ul style="list-style-type: none"> • Headset mic • Top-class • Super light weight and comfortable • Includes accessories (shown)