

www.BenQ.com

Why Choose BenQ LCD Displays?

Leading the digital video industry BenQ's expertise in developing DLP™ digital projectors (No. 2 manufacturer worldwide), LCD monitors (No. 3 manufacturer worldwide) and digital cameras (2-5 Mega-pixels) enables us to create products that offer the ultimate viewing experience.

Supported by the world's third largest LCD panel maker

BenQ Group is supported by the world's third largest panel manufacturer. The groundbreaking technology that we develop is employed in our LCD displays to bring you the best panel quality and LCD performance.

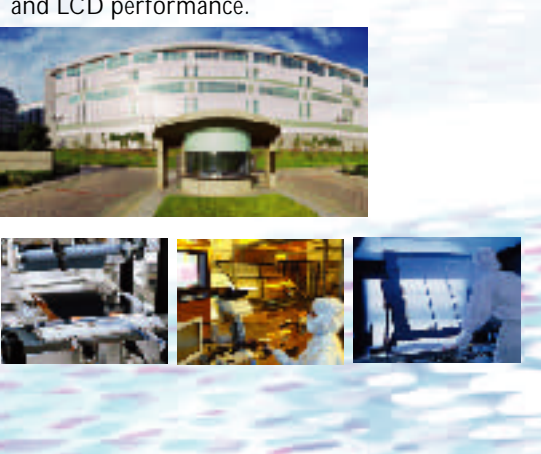


Table with 3 columns: Location, Headquarters, and Factory.

Ideas that Complement Human Intelligence

Most people don't care how technology works. They simply care about achieving the best possible performance. And the easier it is to use, the better.

That's why the concept of technology that allows users to realize their full human potential is what drives everything BenQ does.

We believe that the user is the heart of the brand, and that's why it's where we start and where we end up. Instead of packing our products with features that are high in gadget appeal yet low in consumer response, everything we do is designed to help users get the most out of life by making the most of their potential.

After all, technology shouldn't be a stranger. It should be a quiet, dependable friend that is an integral part of everyday life.

Owner's Stamp



BENQ Home Theater LCD Displays

Deeper, Richer, Clearer High Definition Enjoyment.



Announcing A New Generation In Home Theater LCD Display.

Created For The Human Eye.

For Deeper, Richer, Clearer High Definition Enjoyment.



Senseye: Responding to the True Potential of the Human Eye

In developing our Senseye technology we began with a simple truth: Despite our industry's giant technological advances, the human eye can still see far more than regular displays can show.

So, instead of putting the wool over your eyes with clever-sounding gadgets and complicated theories, we disciplined our research and development teams to obsessively explore the more important question of how to make our display technology more responsive to the full potential of the human eye.

The result is Senseeye technology.

A pure digital image enhancement technology that automatically and dynamically improves image quality. And a simple promise of higher definition visuals that are deeper, richer and clearer.

Experience Senseye technology today and come one step closer to the true power of the human eye.

Simple and Stylish to Suit Your Taste

BenQ Home Theater LCD Displays feature a unique contour design that is simple yet contemporary. Its texture and color perfectly complement each other, demonstrating BenQ's commitment to both world-class style and substance.

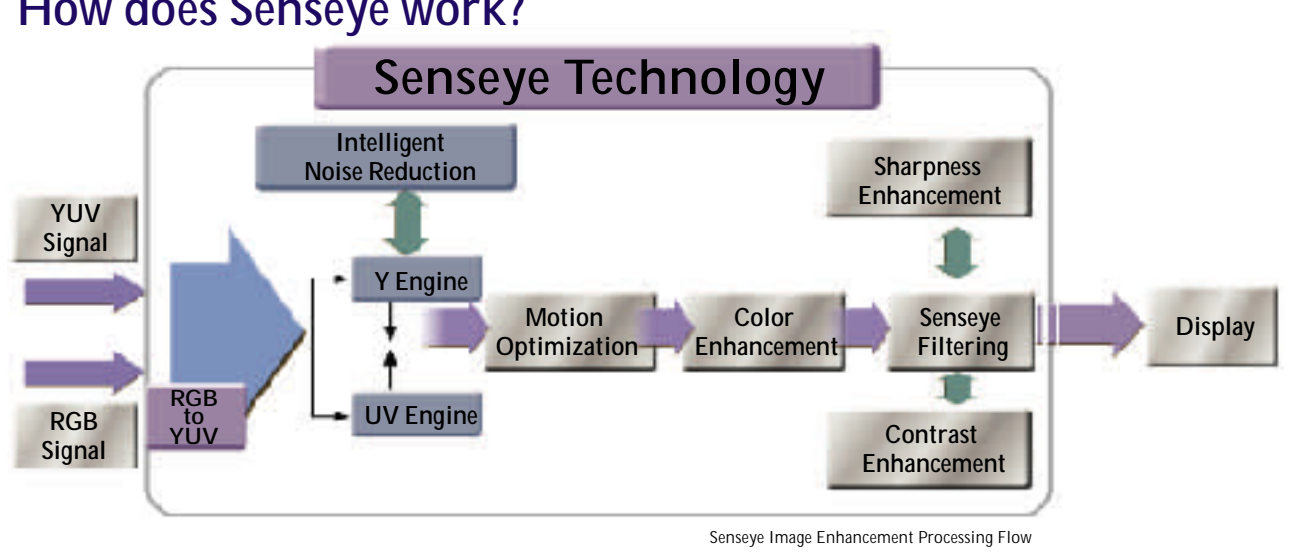


How does Senseeye technology emulate the human eye?

The colors found in nature are defined by two elements: Luminance (its brightness) and Chrominance (its color). The human eye responds to the way these elements mix, and for this reason, we utilize a YUV Domain Engine that processes images like the human eye. By fine-tuning the clarity, motion and contrast, it can effectively enhance image signals and display the image perfectly.

- Color Enhancement - Restores true-to-life images. Clarity Enhancement - Presents the original fineness and clarity of images. Motion Optimization - Smooths out moving images. Contrast Enhancement - Enhances details in darker and brighter images.

How does Senseeye work?



Color Enhancement for true-to-life images

Before processing, BenQ's exclusive YUV Domain Engine breaks out every signal into two elements: Luminance (Y) and Chrominance (UV). This is because all the images we see around us consist of three basic elements. Therefore, the video signals are sent and being processed into YUV Domain Engine, which is the best way to transfer video images to the human eye. With its YUV Domain Engine, BenQ's high-quality Home Theater LCD Display brings you the most true-to-life colors.

10-bit internal processing can handle over 1.07 billion colors.

This means the colors on your screen can be adjusted to be smoother and more vivid.



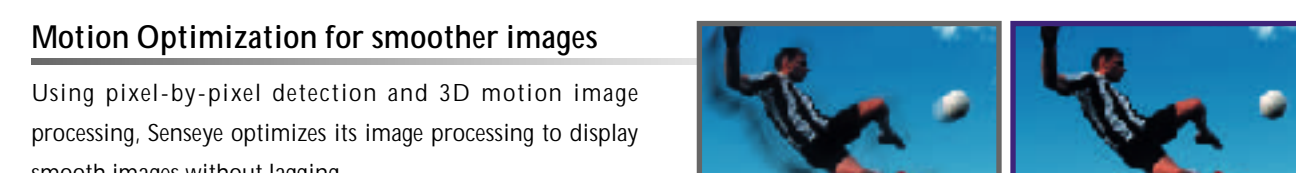
Clarity Enhancement for a purer display

Intelligent Noise Reduction technology processes still pictures and moving images separately and eliminates all noise from the source signals. Sharpest Enhancement strikes a balance between saturation, clarity and brightness, so that the colors remain well-balanced. The double-ring effect brought about by precise adjustment on conventional TVs and keeps images clear and sharp.



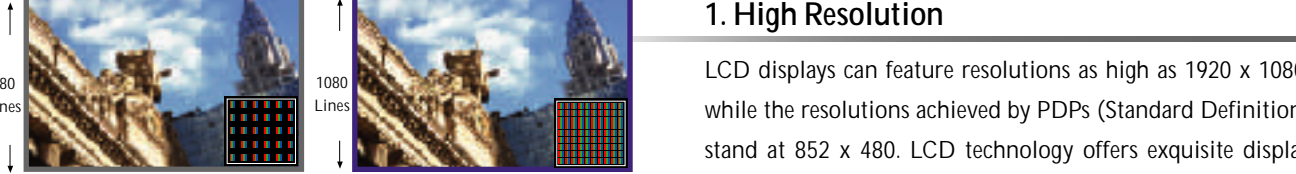
Contrast Enhancement for unparalleled detail

With Intelligent Contrast Enhancement, Senseeye displays more detailed and vivid picture quality by processing dark and bright images separately and precisely. The resulting images are true to life and easy on the eye.



Motion Optimization for smoother images

Using pixel-by-pixel detection and 3D motion image processing, Senseeye optimizes its image processing to display smooth images without lagging.

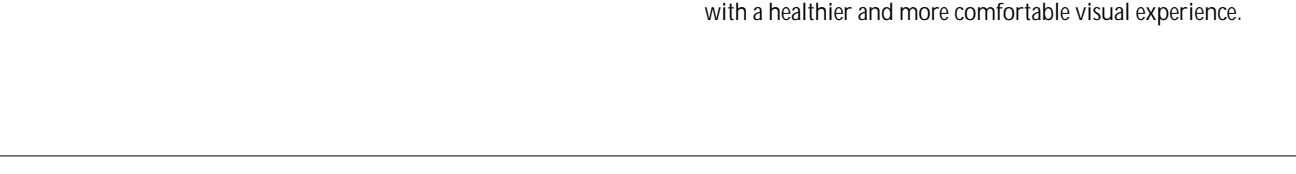


LCD Display - The Best Choice for Home Entertainment

Why is LCD technology superior to PDP technology?

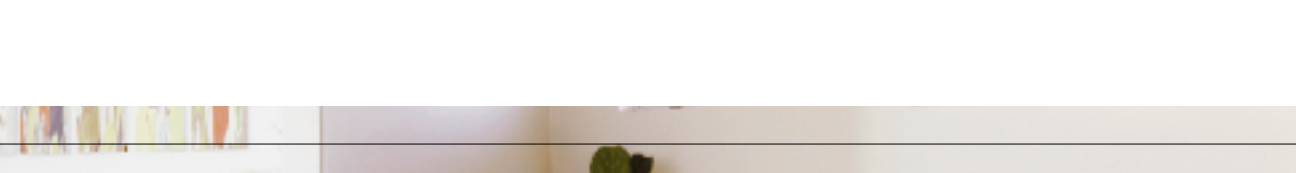
1. High Resolution

LCD displays can feature resolutions as high as 1000 x 1000, while the resolutions achieved by PDP (Standard Definition) stands at 600 x 800. LCD technology offers superior display quality that PDP technology cannot match.



2. High brightness and High Contrast

In a room with ordinary lighting conditions, the brightness of a LCD display can reach over 500lm, in addition to a contrast ratio of about 500:1. Meanwhile, PDP can only offer brightness of 100lm and a contrast ratio of 200:1. LCD display by comparison outperforms PDP display.



3. No Burn-in Effect, No Radiation

After displaying static images for a long period of time, a 'burn-in effect' will be left on a PDP display, providing an unpleasant viewing experience. PDP also emits radiation just as conventional televisions do. However, LCD image technology can prevent burn-in effect and radiation so as to provide you with healthier and more comfortable viewing experience.



DV4670 The Top Choice for Discerning Home Theater Enthusiasts

It's amazing how a work of art can transform your mood. A Greco-Roman statue and a water fountain in your dining room make you feel like you're in France or Italy. A Rembrandt oil painting and European bone china in your garden can transport you to a magical winter in England. In the same way, the DV4670's 46 inch wide screen with its sophisticated contours is an eye-pleasing triumph of design that will turn your living room into an artistic statement.

A composed and majestic design approach

The BenQ DV4670 is praised for its simple yet sophisticated styling. Its extended 'lean back' angle demonstrates a distinguished and unique design approach. The front panel is in two colors, which harmoniously complements its simple lines to present the ultimate visual enjoyment.

A spacious 46-inch screen display that offers true-to-life image quality

With its high-quality 2025 x 1080 digital specifications, the DV4670 displays extremely delicate images and is HDTV 1080 resolution compatible. The fine image provides you the sensation of watching true-to-life images.

16:9 golden ratio guarantees zero distortion

Wide its 16:9 aspect ratio, the BenQ DV4670 produces a visual effect that feels more natural to the human eye. Most LCD TVs currently on the market use a 4:3 ratio. When viewing 16:9 video signal on a 4:3 LCD, the image will be distorted. But with a true 16:9 aspect ratio, BenQ's Home Theater LCD Display produces distortion-free images.

8ms gray-to-gray response time

Equipped with an ultra-fast 8ms gray-to-gray response time, the DV4670 allows smooth images with no lagging.

- Exclusive Senseeye Technology for Fine-tuned, True-to-life Images. Independent Four-Color Adjustment. Advanced Oil Pressure Front Cover.

- 16:9 Ultra High Contrast Ratio. 1080p High Resolution. Exclusive 170-degree Wide Viewing Angle. 8ms Gray-to-Gray Response Time.



DV3750 Experience the Finer Side of Visual Technology

If you want to enjoy a fine red wine, choose the best vintage. If you want to enjoy great art, choose a master's touch. If you want to enjoy the best viewing experience, choose the DV3750. Supported by 10000 high-quality digital specifications, your tasteless eyes won't miss key moments or fine details.

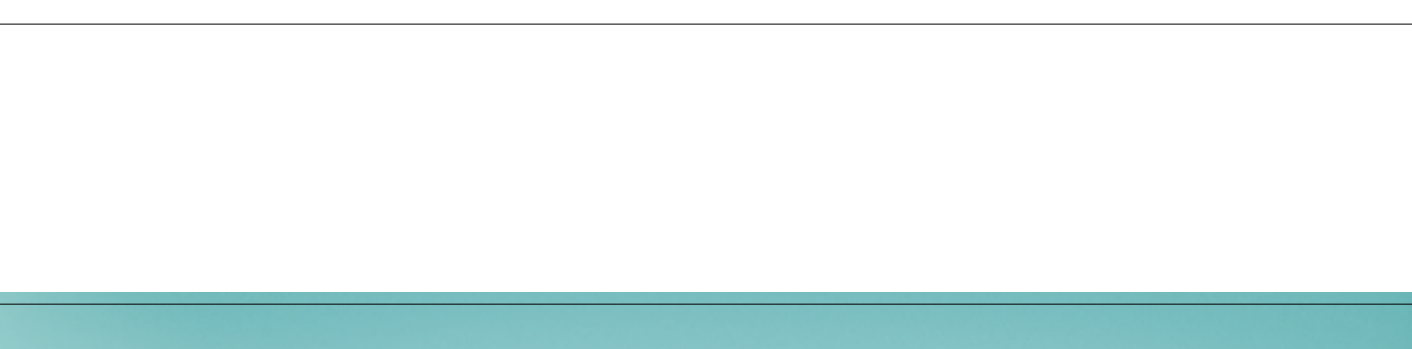
DCDI video processing for crisp, clear images

With Directional Correlational Distorting (DCDI), video is analyzed pixel by pixel to detect the presence or absence of angled lines and edges, which are then processed to produce a purer and more natural looking image without visible artifacts or jagged edges. In this way, the BenQ DV3750 makes moving images look smoother and more natural.

8000+ ultra-high contrast ratio

Processes bright and dark images more precisely, so that you can even see detail even in the darkest images.

- Exclusive Senseeye Technology for Fine-tuned, True-to-life Images. Independent Four-Color Adjustment. SES TruStereoXT. 16:9 Golden Ratio Guarantees Zero Distortion. 1080p High Resolution. 12ms Gray-to-Gray Response Time.



The 16:9 Golden Ratio - The Mark of Quality, Taste and Instinctive Beauty

The BenQ DV3250's clean profile and 16:9 'golden aspect ratio' display are a pleasure to behold, even when not displaying images! Elegant lines complement the balanced style of your home and reflect your sense of taste. Who says you can't have technology and humanity in one? BenQ's Home Theater LCD Display marries refinement and world-class technology in a combination that has worldwide consumer recognition.

DCDI video processing for crisp, clear images

With Directional Correlational Distorting (DCDI), video is analyzed pixel by pixel to detect the presence or absence of angled lines and edges, which are then processed to produce a purer and more natural looking image without visible artifacts or jagged edges. In this way, the BenQ DV3250 makes moving images look smoother and more natural.

16:9 golden ratio guarantees zero distortion

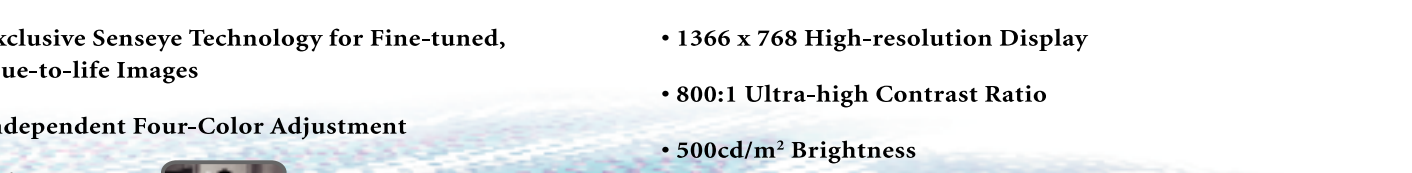
Wide its 16:9 aspect ratio, the BenQ DV3250 produces a visual effect that feels more natural to the human eye. Most LCD TVs currently on the market use a 4:3 ratio. When viewing 16:9 video signal on a 4:3 LCD, the image will be distorted. But with a true 16:9 aspect ratio, BenQ's Home Theater LCD Display produces distortion-free images.

A deeper audio dimension

SES TruStereoXT enables you to enjoy the full experience of 5.1 channel surround sound with just a two-speaker audio system. SES TruStereoXT also features a patented advanced like bass resonance technology that gives the perception of deeper, richer bass tones.

- Exclusive Senseeye Technology for Fine-tuned, True-to-life Images. Independent Four-Color Adjustment. Side-Vue Input.

- 1366 x 768 High-Resolution Display. 8000+ Ultra-High Contrast Ratio. 1000Hz Brightness.



ALCD Display for High-Quality Living

Simple and stylish design. High-Resolution. High Brightness. High Contrast. High Contrast Ratio. High Contrast Ratio. High Contrast Ratio.

Your Visual Pleasure

High Contrast Ratio. High Resolution. High Contrast. High Contrast Ratio. High Contrast Ratio. High Contrast Ratio.

Catching Everyone's Attention with Your Style

A sense of quality. High Contrast Ratio. High Resolution. High Contrast. High Contrast Ratio. High Contrast Ratio. High Contrast Ratio.

Inlayed sound

High Contrast Ratio. High Resolution. High Contrast. High Contrast Ratio. High Contrast Ratio. High Contrast Ratio.

Irresistible charm

High Contrast Ratio. High Resolution. High Contrast. High Contrast Ratio. High Contrast Ratio. High Contrast Ratio.

Table with 3 columns: Model, Q15e, and DV3750.

Table with 3 columns: DV4670, DV3750, and DV3250.

Table with 3 columns: DV4670, DV3750, and DV3250.

Table with 3 columns: DV4670, DV3750, and DV3250.

Table with 3 columns: DV4670, DV3750, and DV3250.

Table with 3 columns: DV4670, DV3750, and DV3250.

Table with 3 columns: DV4670, DV3750, and DV3250.

Table with 3 columns: DV4670, DV3750, and DV3250.

Table with 3 columns: DV4670, DV3750, and DV3250.

Table with 3 columns: DV4670, DV3750, and DV3250.

Table with 3 columns: DV4670, DV3750, and DV3250.

Table with 3 columns: DV4670, DV3750, and DV3250.

Table with 3 columns: DV4670, DV3750, and DV3250.