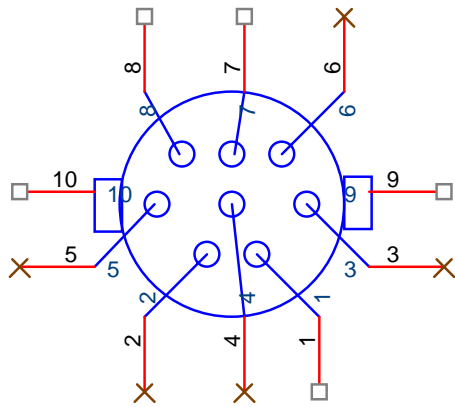


Communication

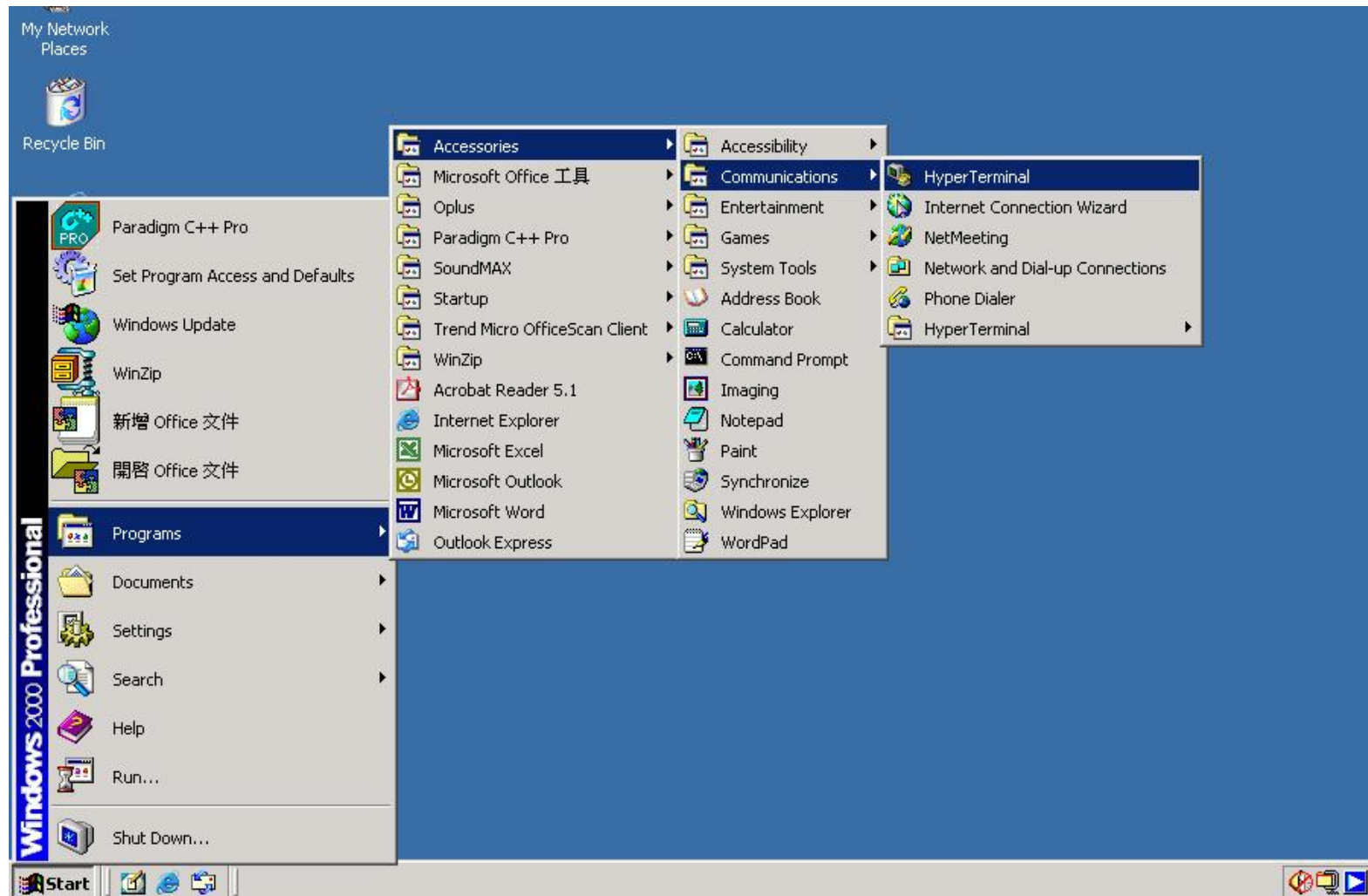


MD8P

- 1.CD : **Carrier Detect**
- 2.RXD : NC
- 3.TXD : NC
- 4.DTR : Ground
- 5.GND : Ground
- 6.DSR :
- 7.RTS : **Request To Send**
- 8.CTS : Ground
- 9.RI : Ring Indicator

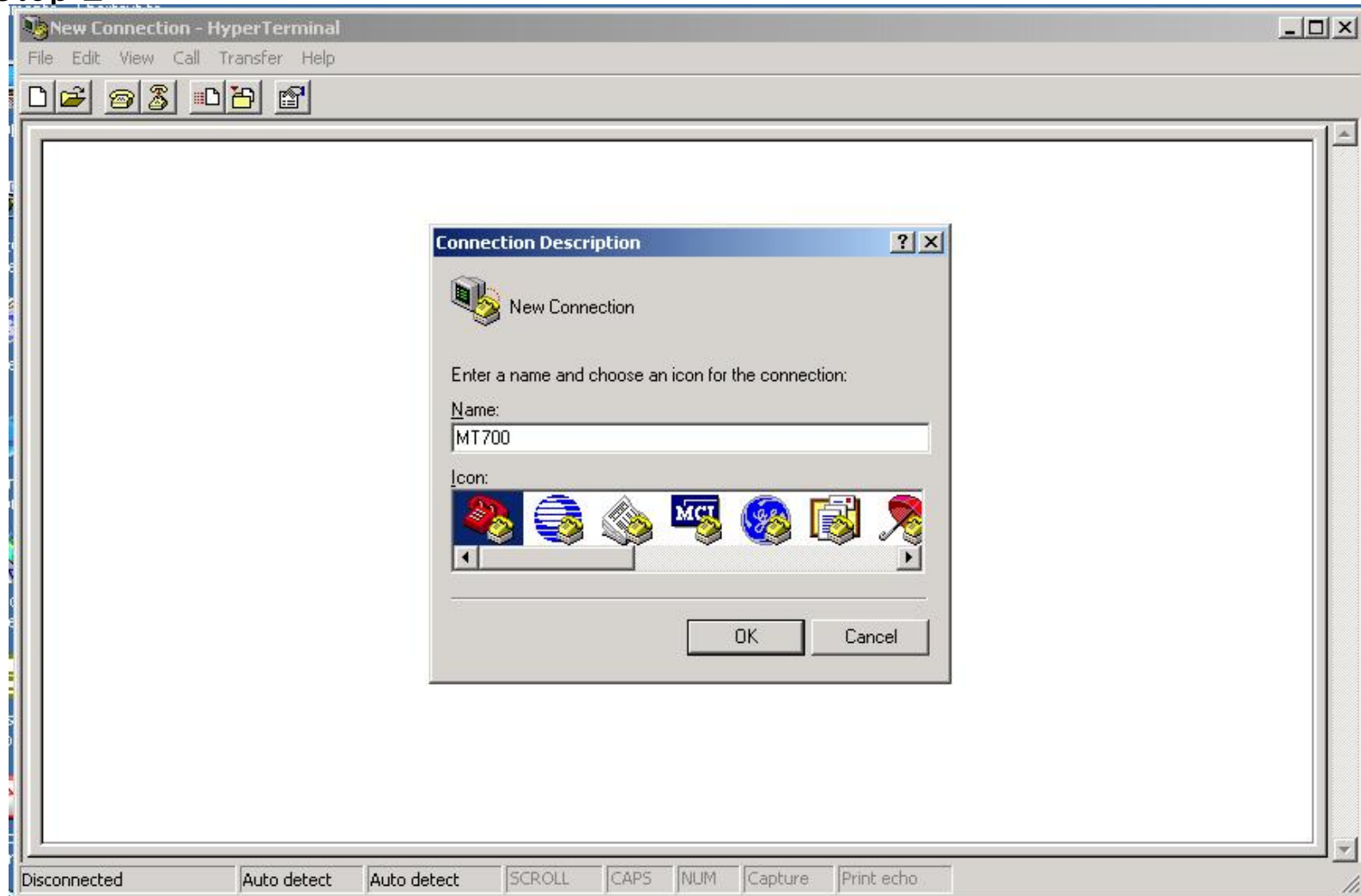
Communication Setup

Step 1



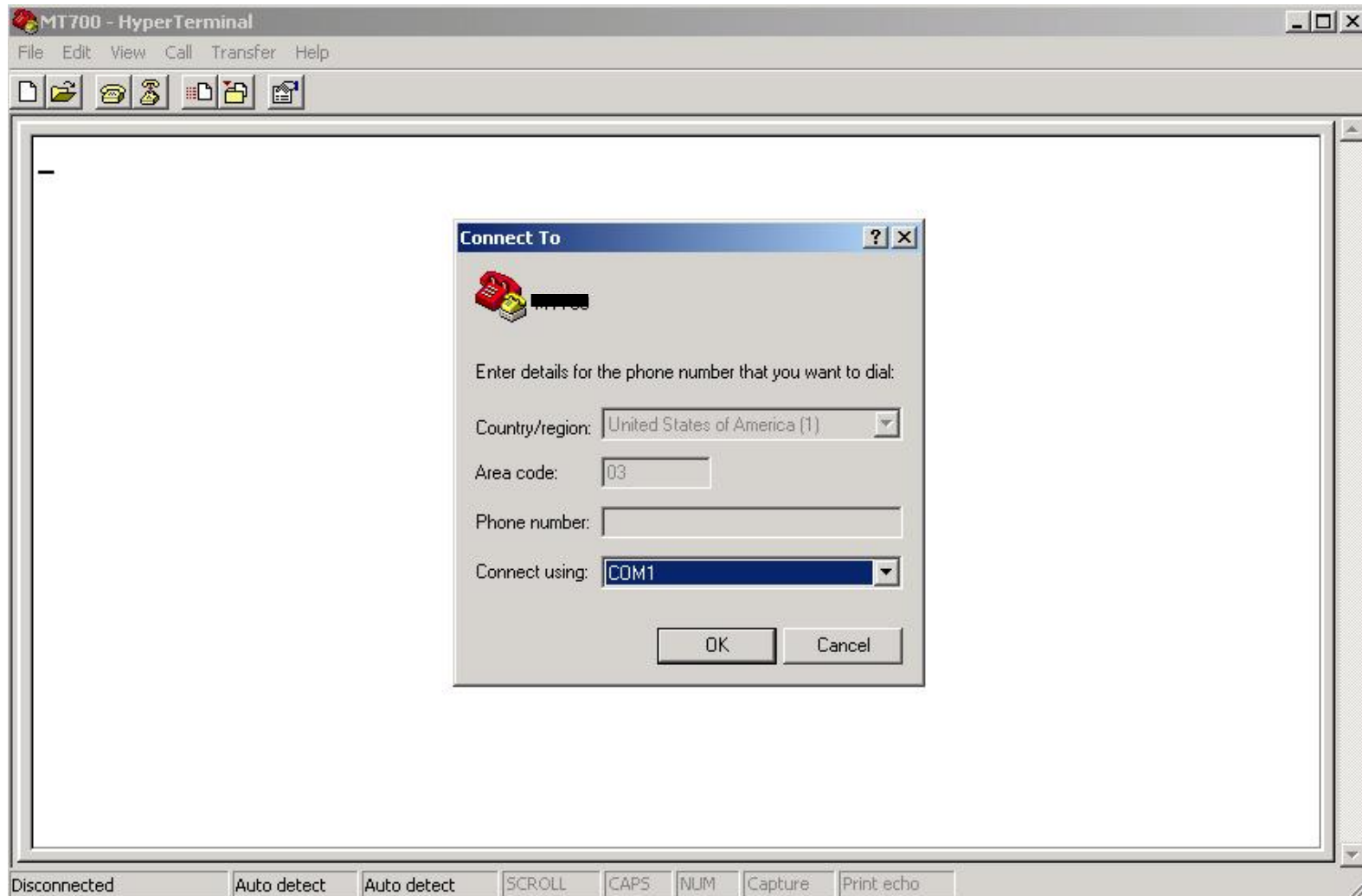
Communication Setup

Step 2



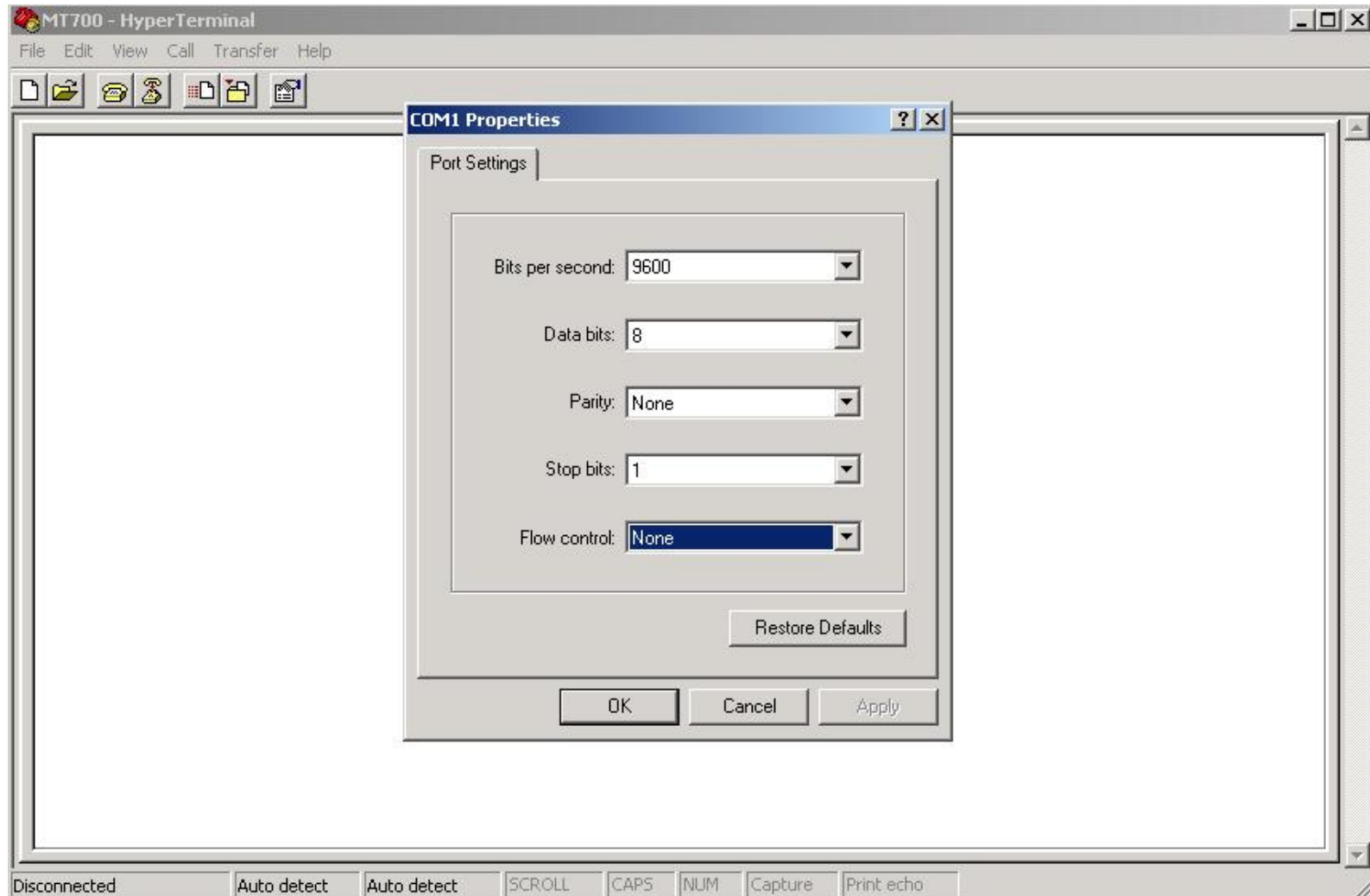
Communication Setup

Step 3



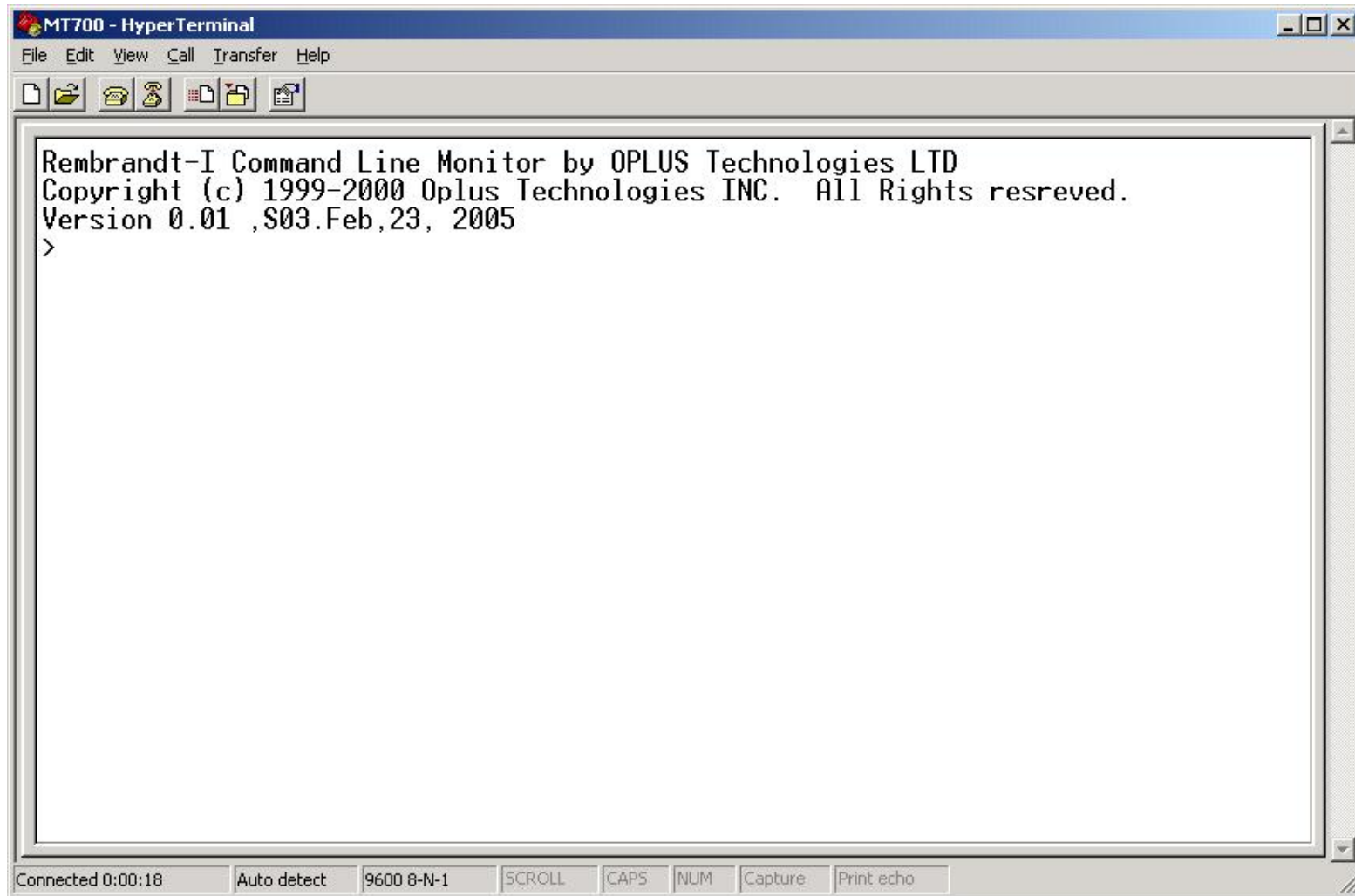
Communication Setup

Step 4



Communication Setup

Step 5



Error History from RS232

- **>x998x**
- **X0X**
- **> ----- ERROR CODE CHECK LIST -----**
- **Error Code 1 -> Main Fan Fails**
- **Error Code 2 -> Power Fan Fails**
- **Error Code 3 -> Blower Fan Fails**
- **Error Code 4 -> DMD Fan Fails**
- **Error Code 5 -> I2C Fails**
- **Error Code 6 -> Entrance Temperature Over Limit**
- **Error Code 7 -> Lamp Box Temperature Over Limit**
- **Error Code 8 -> Lamp Abnormal Off**
- **Error Code 9 -> Lamp Retry Fails**
- **Error Code 10 -> Main Fan Sensor Unstable or Diode Open**
- **Error Code 11 -> Blower Fan Sensor Unstable or Diode Open**
- **Error Code 12 -> Power Fan Sensor Unstable or Diode Open**
- **Error Code 13 -> Fan IC Read Main Fan Failure**
- **Error Code 14 -> Fan IC Read Blower Fan Failure**
- **Error Code 15 -> Fan IC Read Power Fan Failure**

- **----- Error History: -----**
- **Error code 1 is 11 at 2 Hours**
- **Error code 2 is 9 at 3 Hours**
- **Error code 3 is 0 at 0 Hours**
- **-----**

- **X0_998X**

Communication

- **>x998x**
- **X0X**
- **> ----- ERROR CODE CHECK LIST -----**
- **Error Code 1 -> Main Fan Fails**
- **Error Code 2 -> Power Fan Fails**
- **Error Code 3 -> Blower Fan Fails**
- **Error Code 4 -> DMD Fan Fails**
- **Error Code 5 -> I2C Fails**
- **Error Code 6 -> Entrance Temperature Over Limit**
- **Error Code 7 -> Lamp Box Temperature Over Limit**
- **Error Code 8 -> Lamp Abnormal Off**
- **Error Code 9 -> Lamp Retry Fails**
- **Error Code 10 -> Main Fan Sensor Unstable or Diode Open**
- **Error Code 11 -> Blower Fan Sensor Unstable or Diode Open**
- **Error Code 12 -> Power Fan Sensor Unstable or Diode Open**
- **Error Code 13 -> Fan IC Read Main Fan Failure**
- **Error Code 14 -> Fan IC Read Blower Fan Failure**
- **Error Code 15 -> Fan IC Read Power Fan Failure**

- **----- Error History: -----**
- **Error code 1 is 11 at 2 Hours**
- **Error code 2 is 9 at 3 Hours**
- **Error code 3 is 0 at 0 Hours**
- **-----**

- **X0_998X**