

BENQ Scanner Windows XP Installation Guide

- Driver version : MiraScan V4.03U09
- Scanner model : USB1.1 interface scanner 3000U , 3300U , 4300U
- OS : Windows XP
- Download website : <http://www.benq.com.tw/global/service/scan/drivers.htm>

Notice 1 : Please setup Photoshop or PhotoExpress first before driver installation .

Notice 2 : If you still got Error Messages after these installation steps , please E-mail to us your problems .

E-mail to :

Asia Pacific area and Taiwan : APFService@benq.com

America : support-sc@benq.com

Europe : support@benq-eu.com

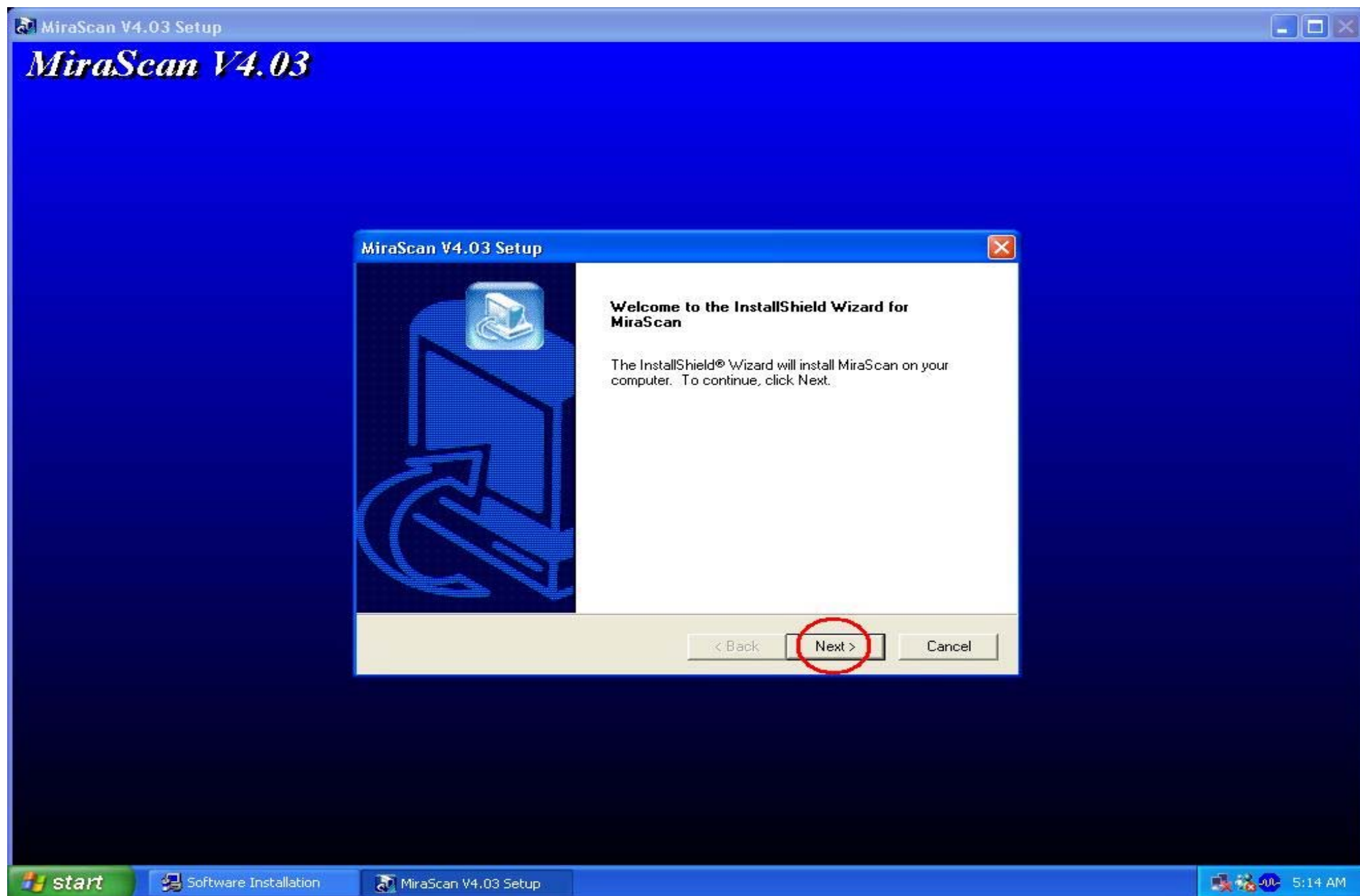
China : service@benq.com.cn

Other Sites : IMGservice@benq.com

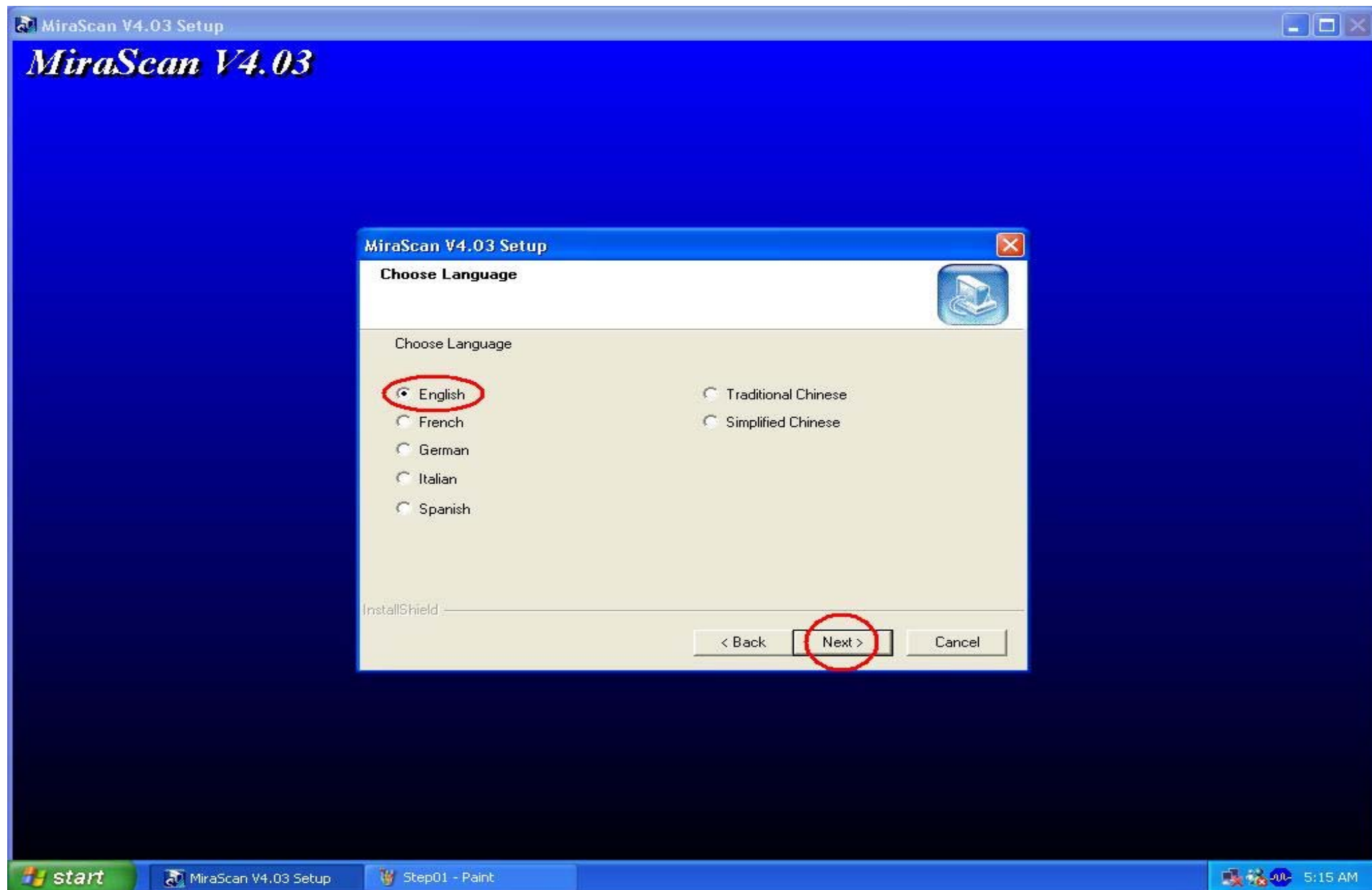
Please specify :

- 1.OS version (WinXP)
- 2.Driver version (MiraScan vX.XX)
- 3.Model No. & Serial No.
- 4.Platform spec. (Motherboard model , Platform model , Ram size , CPU spec...)
- 5.Application problem (Which steps / what situation will happen...) & Software version
- 6.Your local Country (Address)

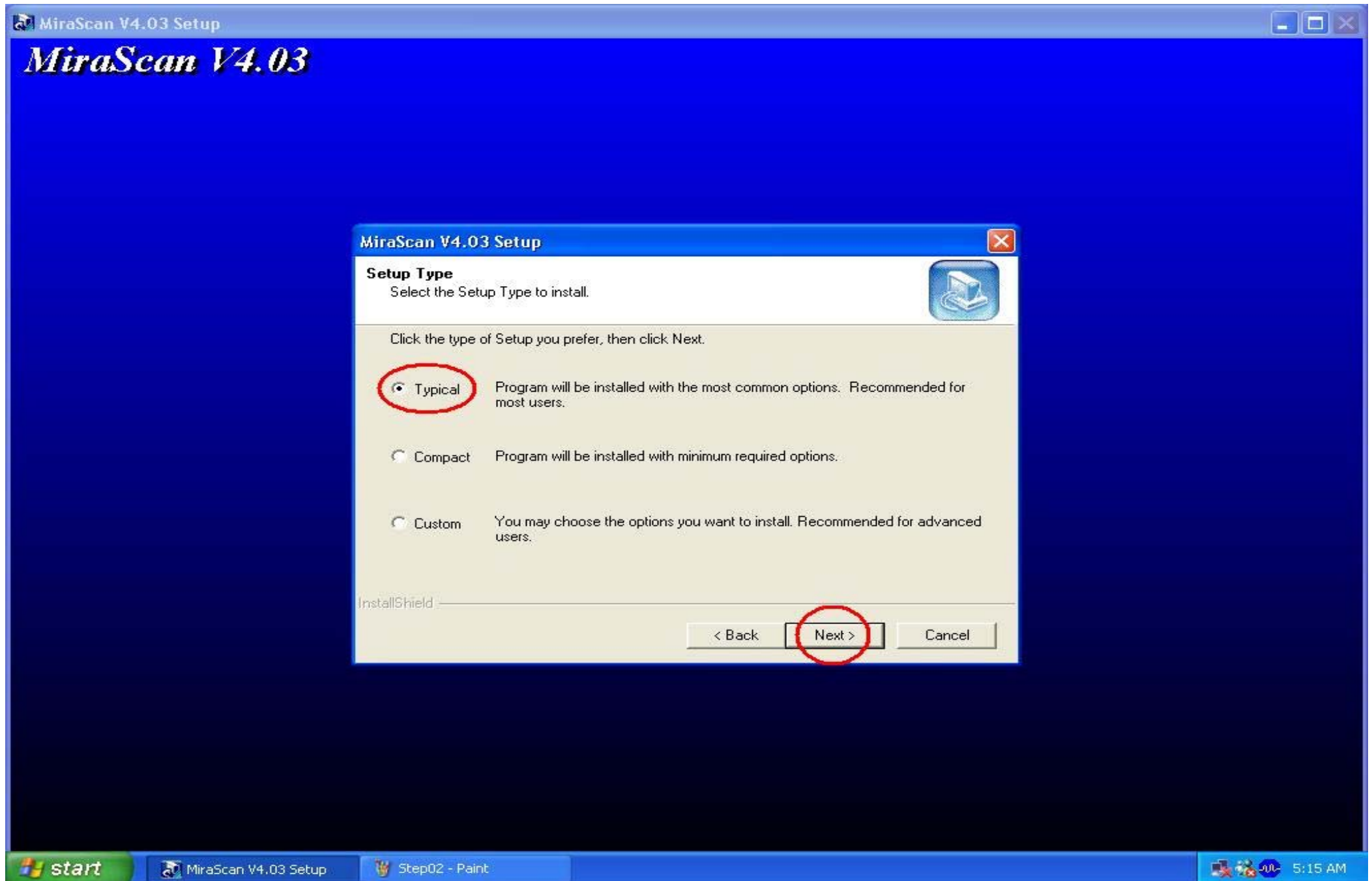
Installation Step 01: Unzip MiraScan V4.03U09 , click setup.exe , click Next .



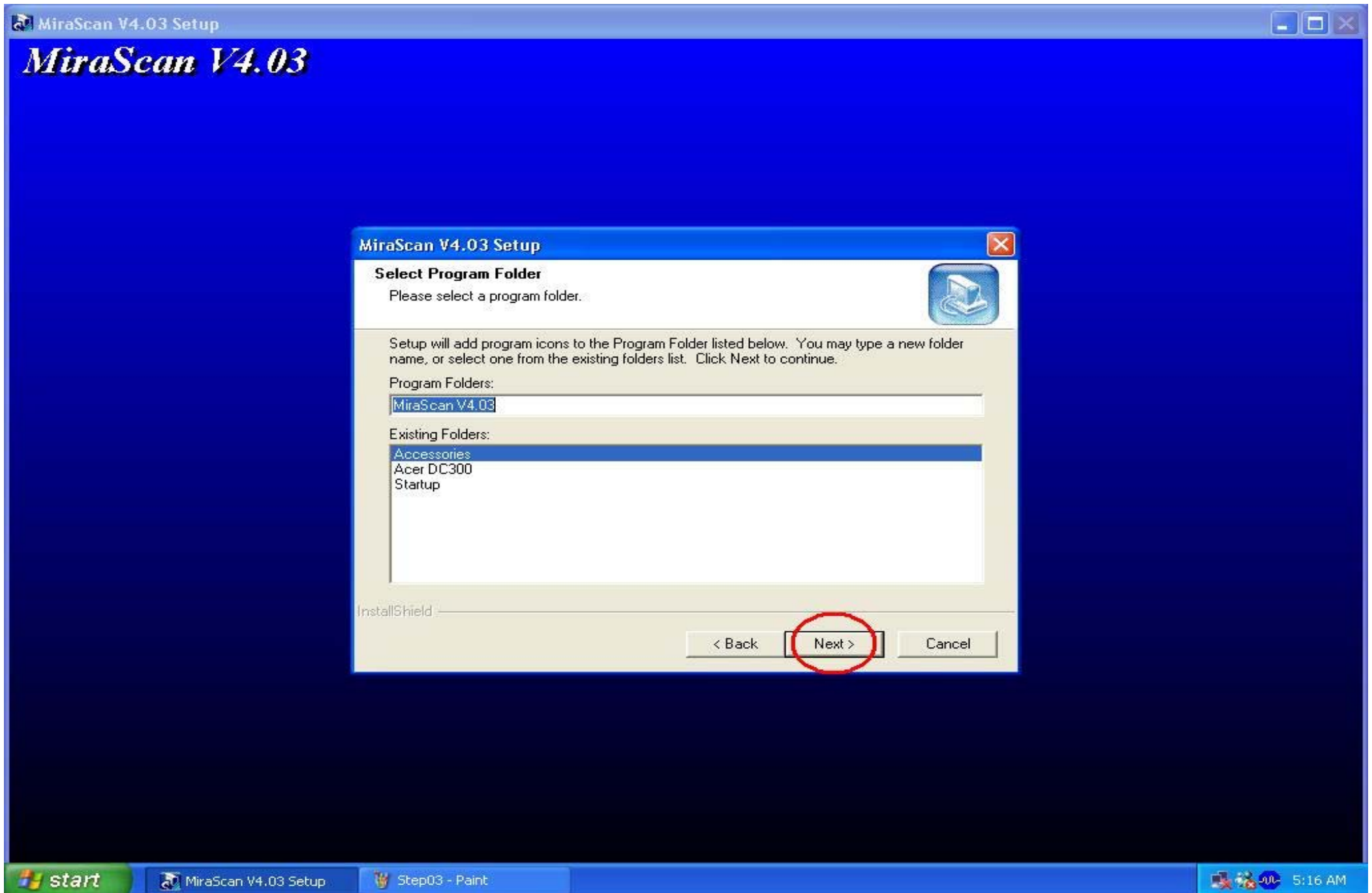
Installation Step 02: Choose Language , you just could choose English or Traditional Chinese version .



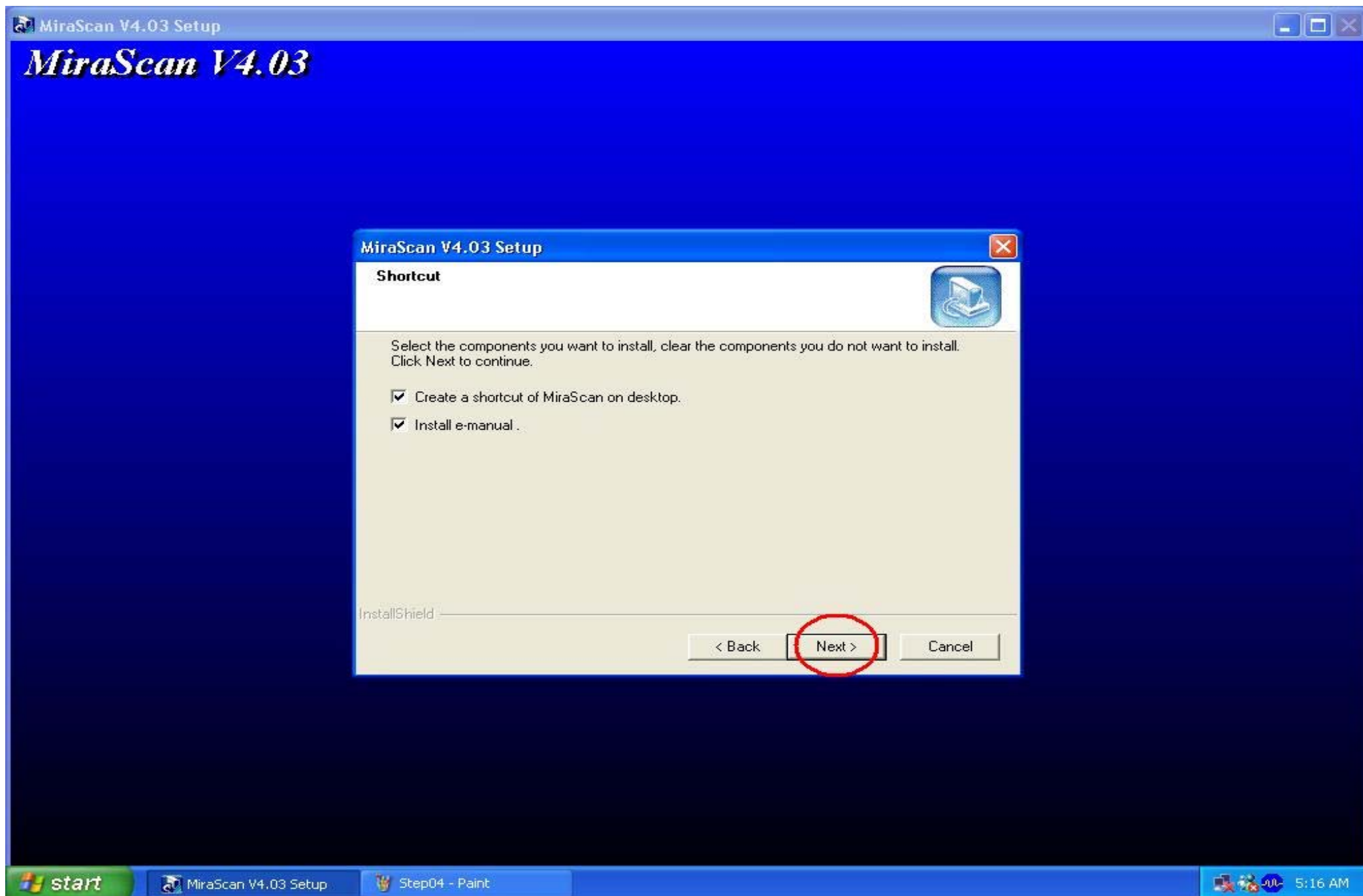
Installation Step 03: Choose Setup Type , default is Typical type , then click Next .



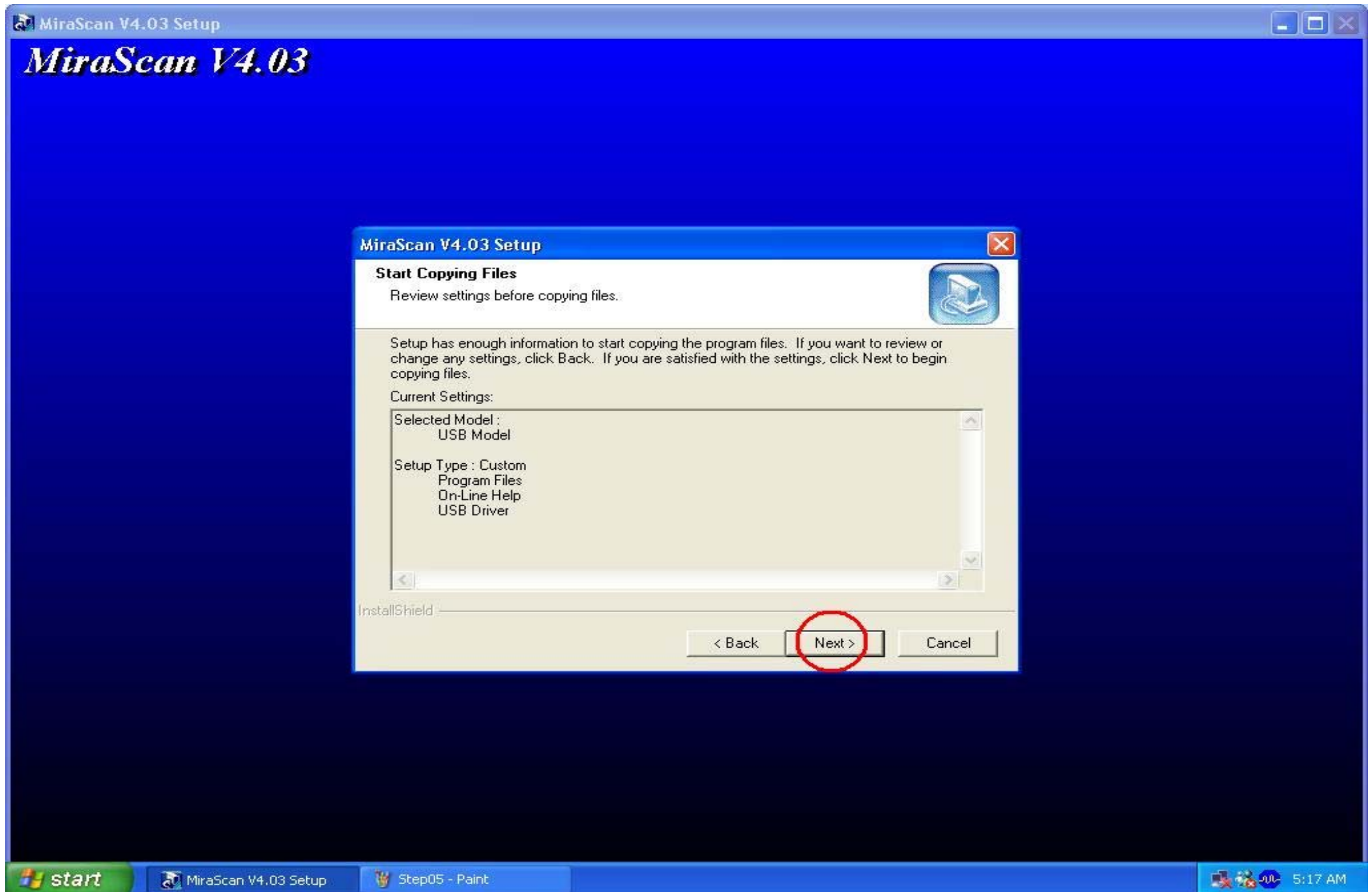
Installation Step 04: Select Program Folders Name , then Click Next .



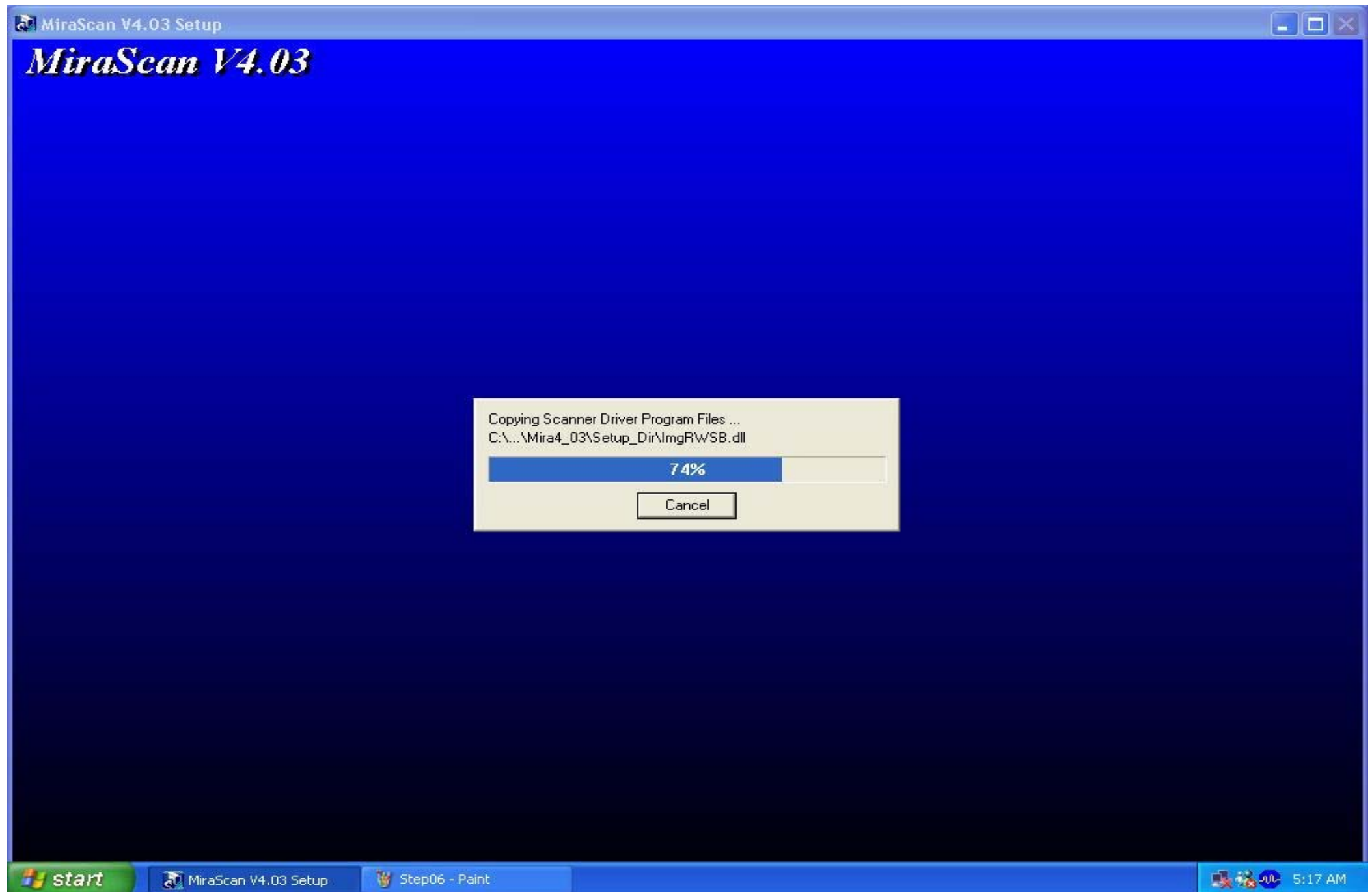
Installation Step 05: Create a Shortcut of MiraScan on desktop , then click Next .



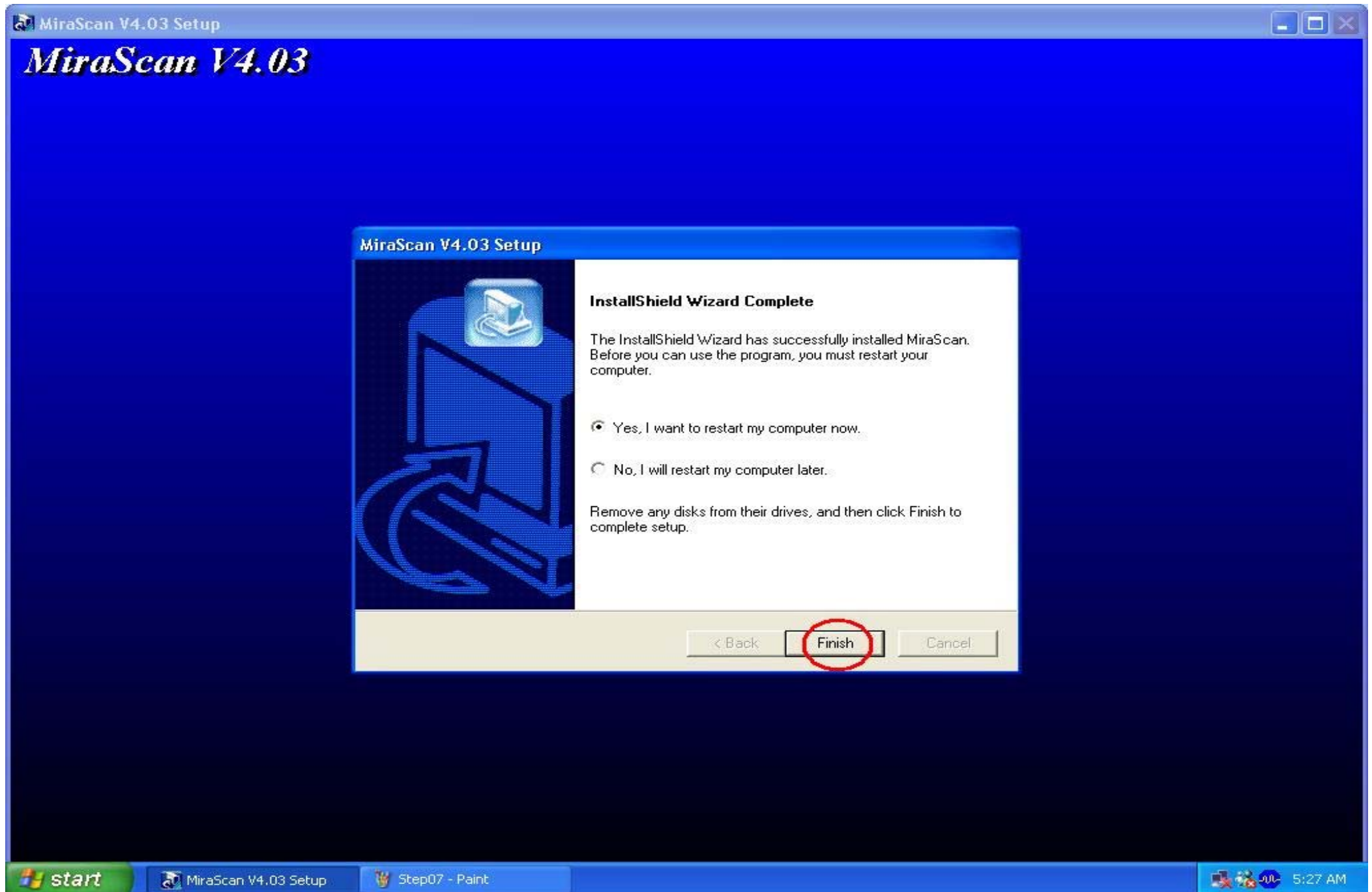
Installation Step 06: Start Copying Files , then click Next .



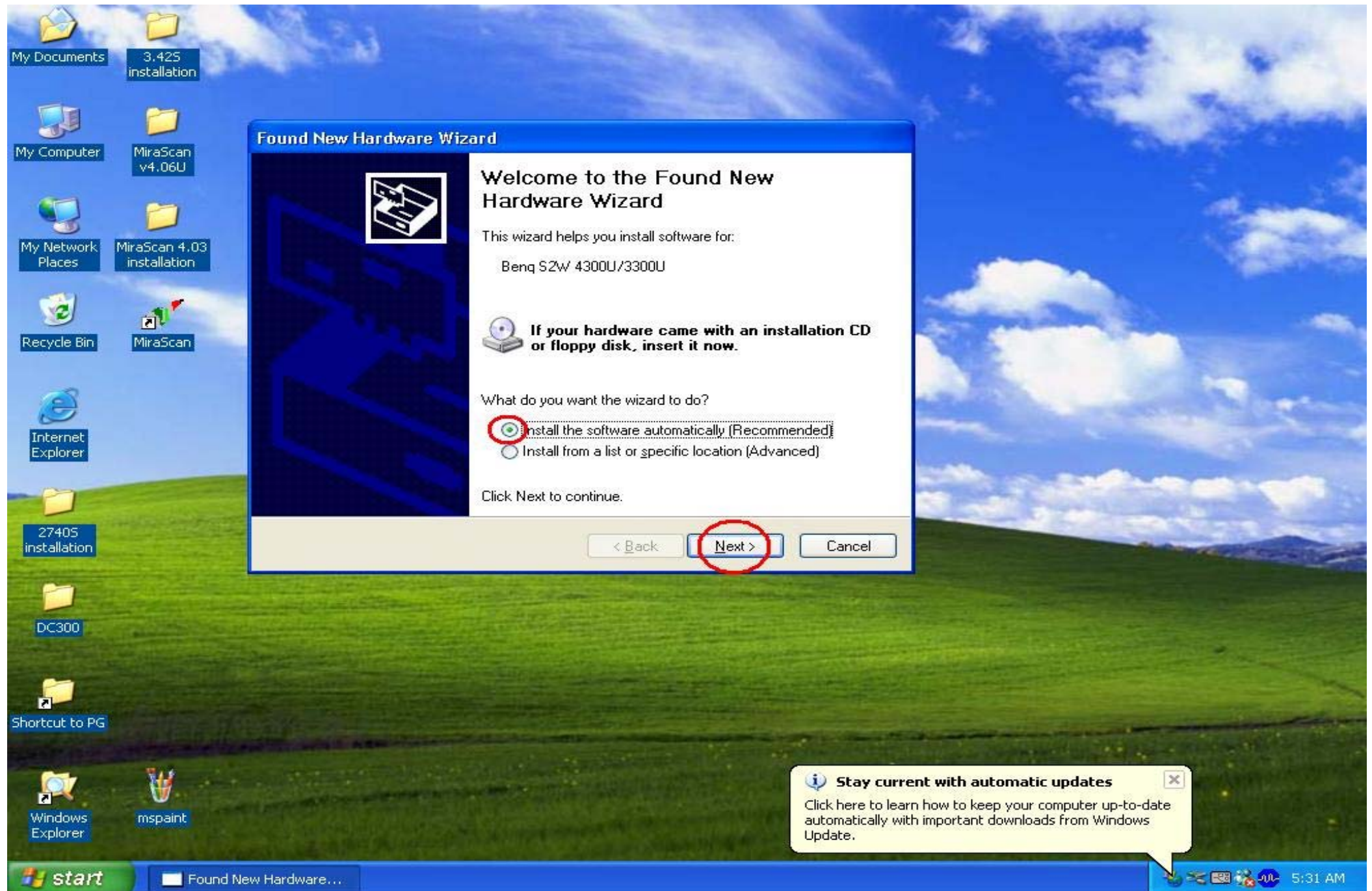
Installation Step 07: Copying MiraScan Program Files , please wait for some seconds .



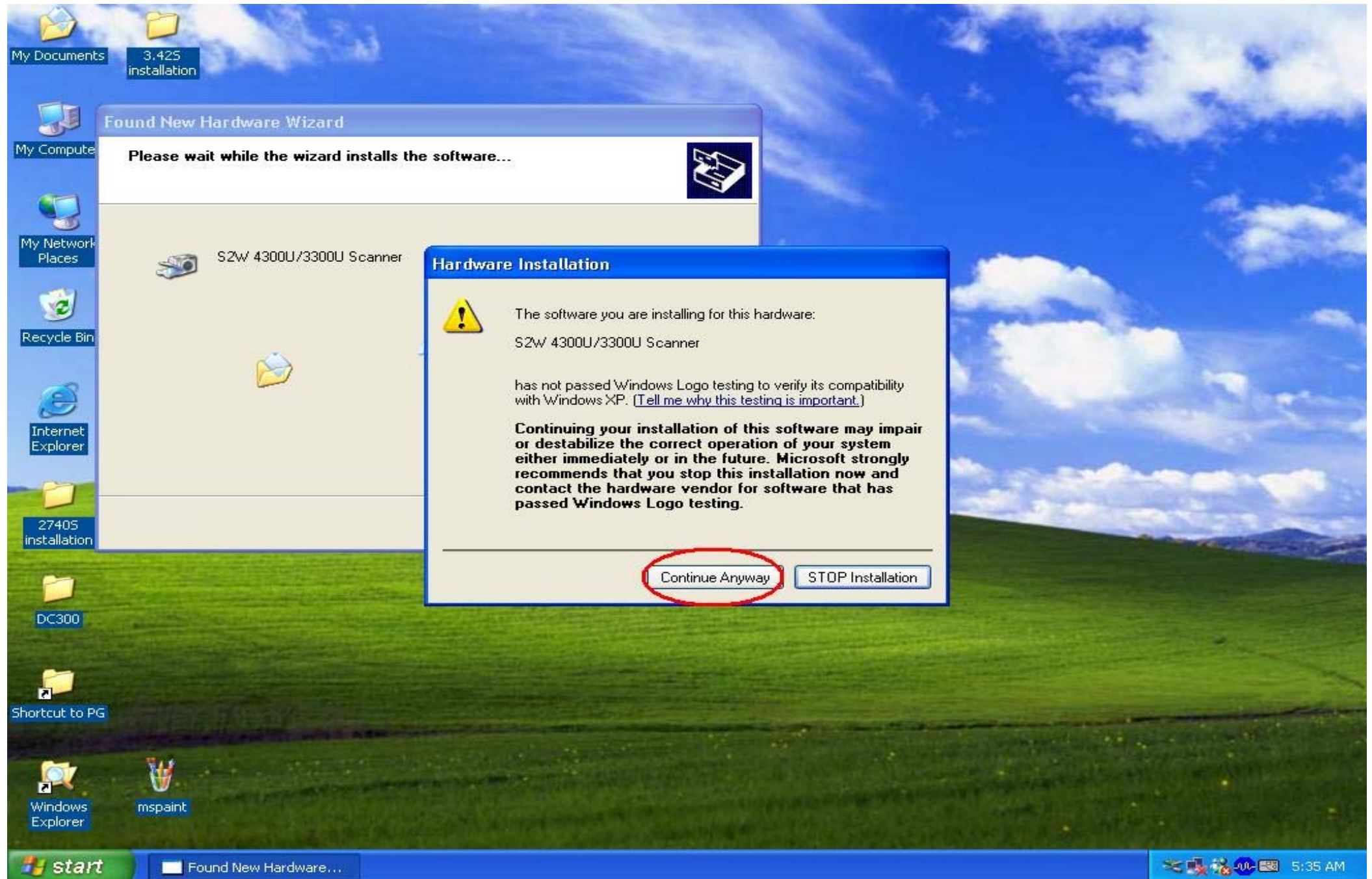
Installation Step 08: Setup Complete , please click Finish and restart your computer .



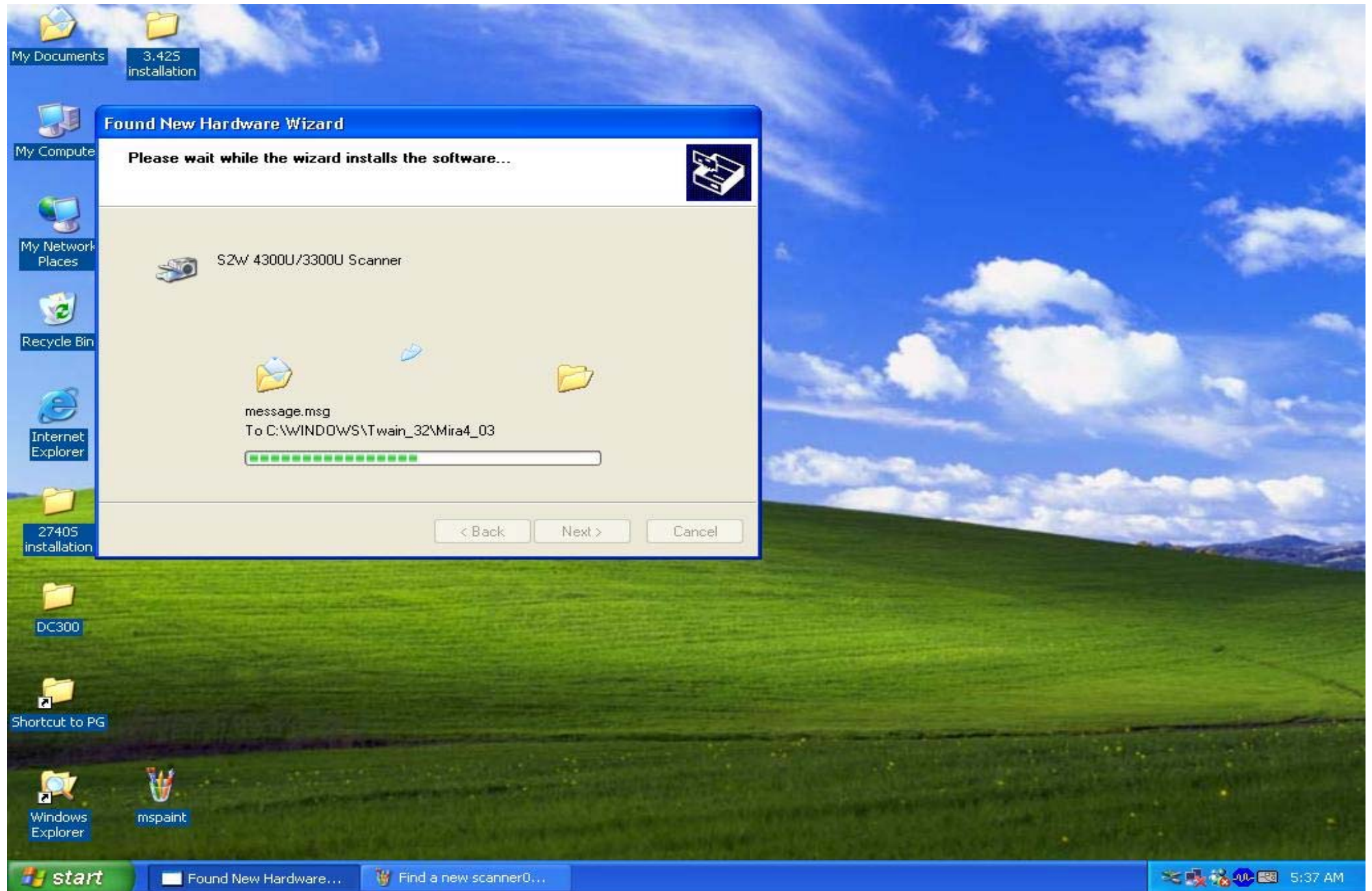
Installation Step 09: After login on Windows XP , power on scanner , then system will detect new hardware , click Next .



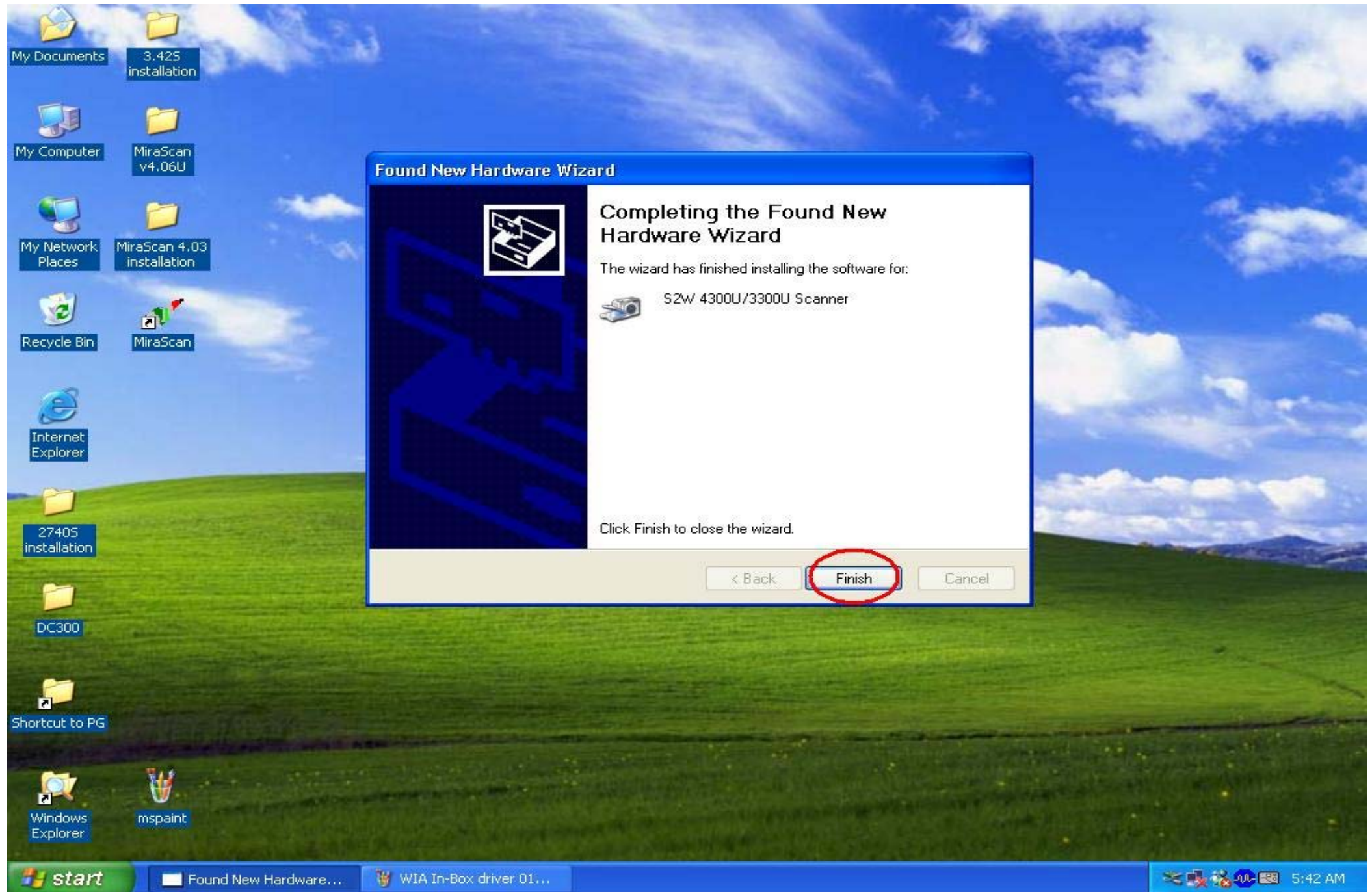
Installation Step 10: System will show Notice message , it's safe to click Continue Anyway to install .



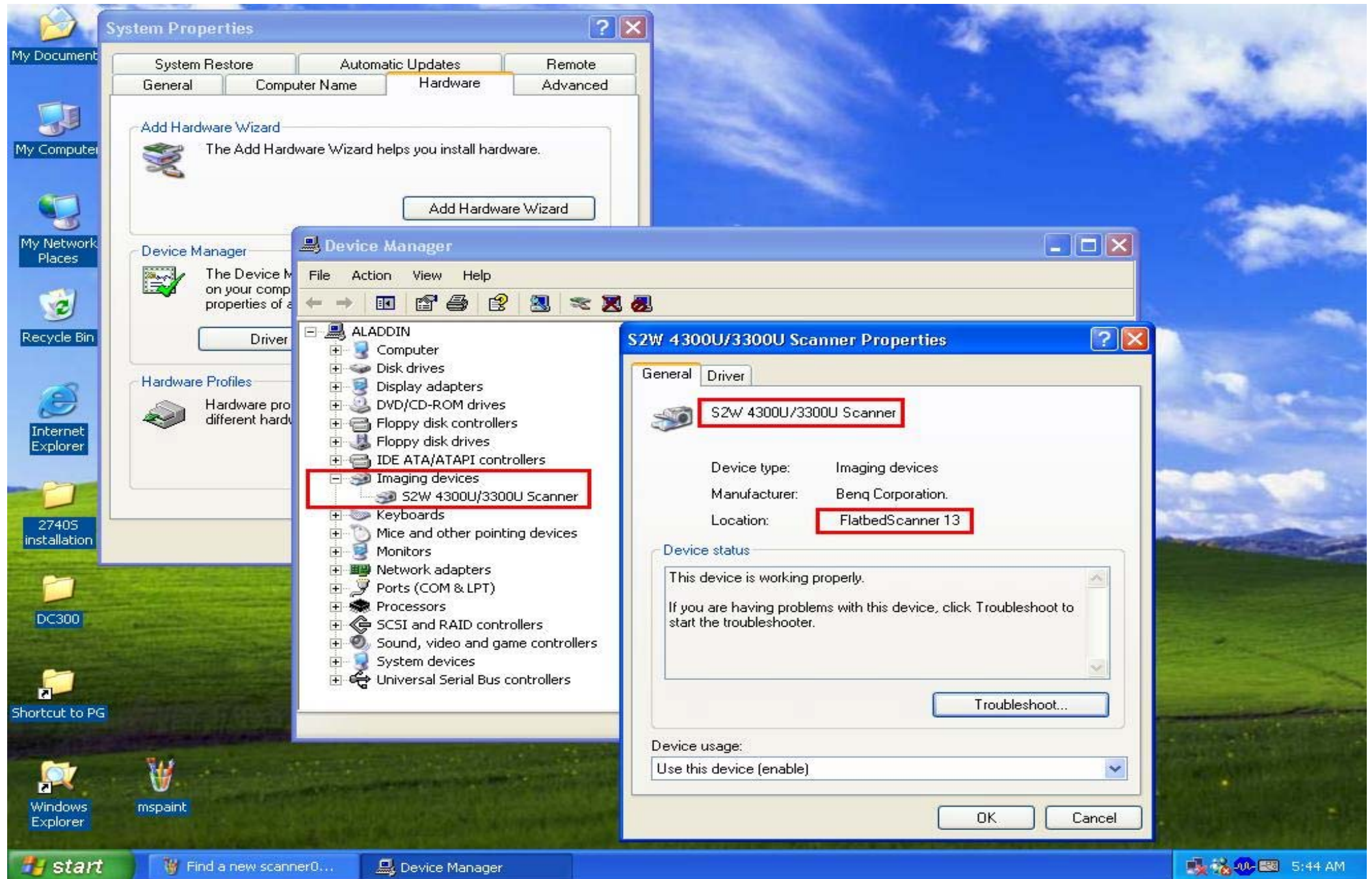
Installation Step 11: Please wait for some seconds to copy files .



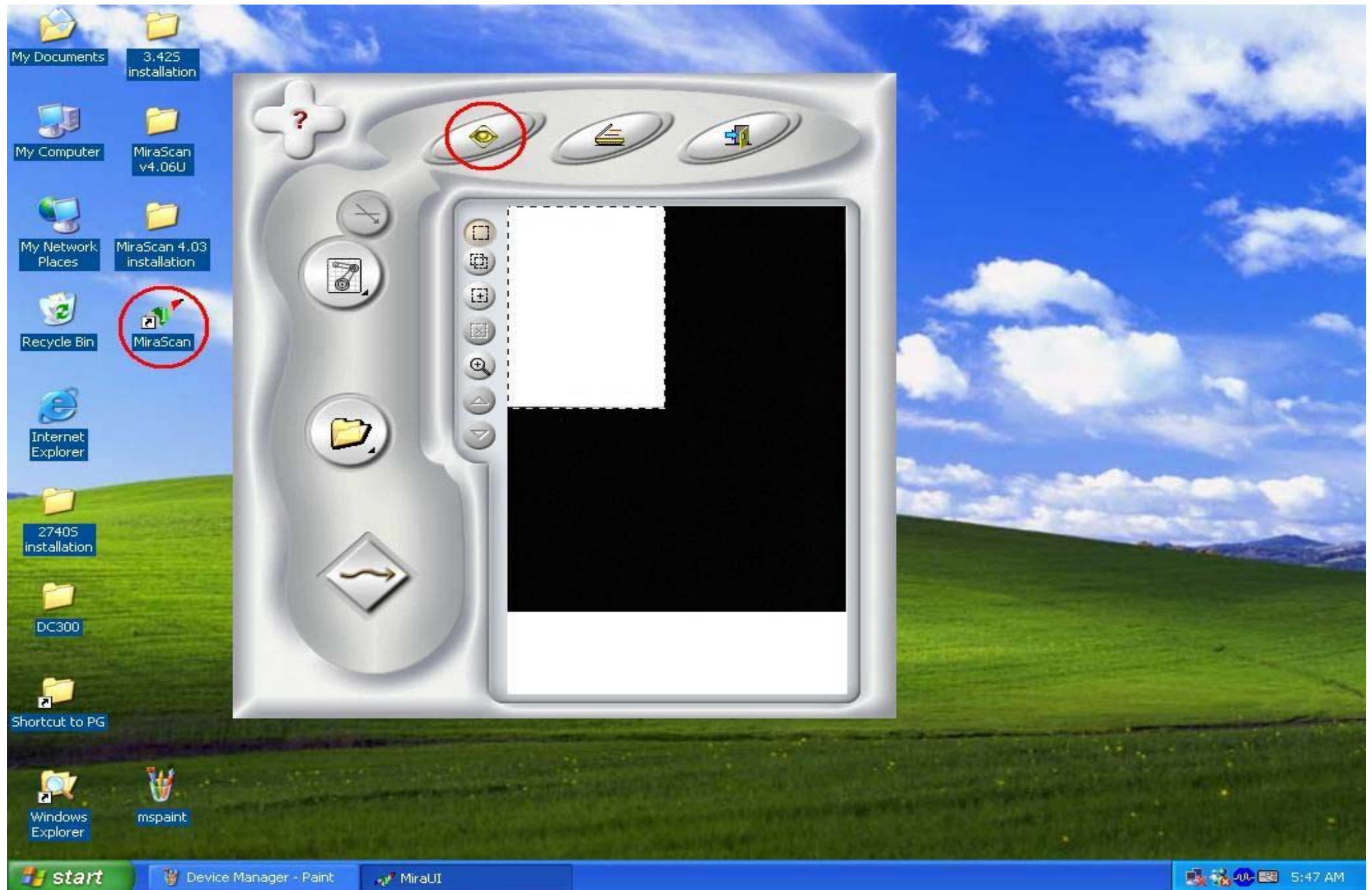
Installation Step 12: Finish installation , please click Finish .



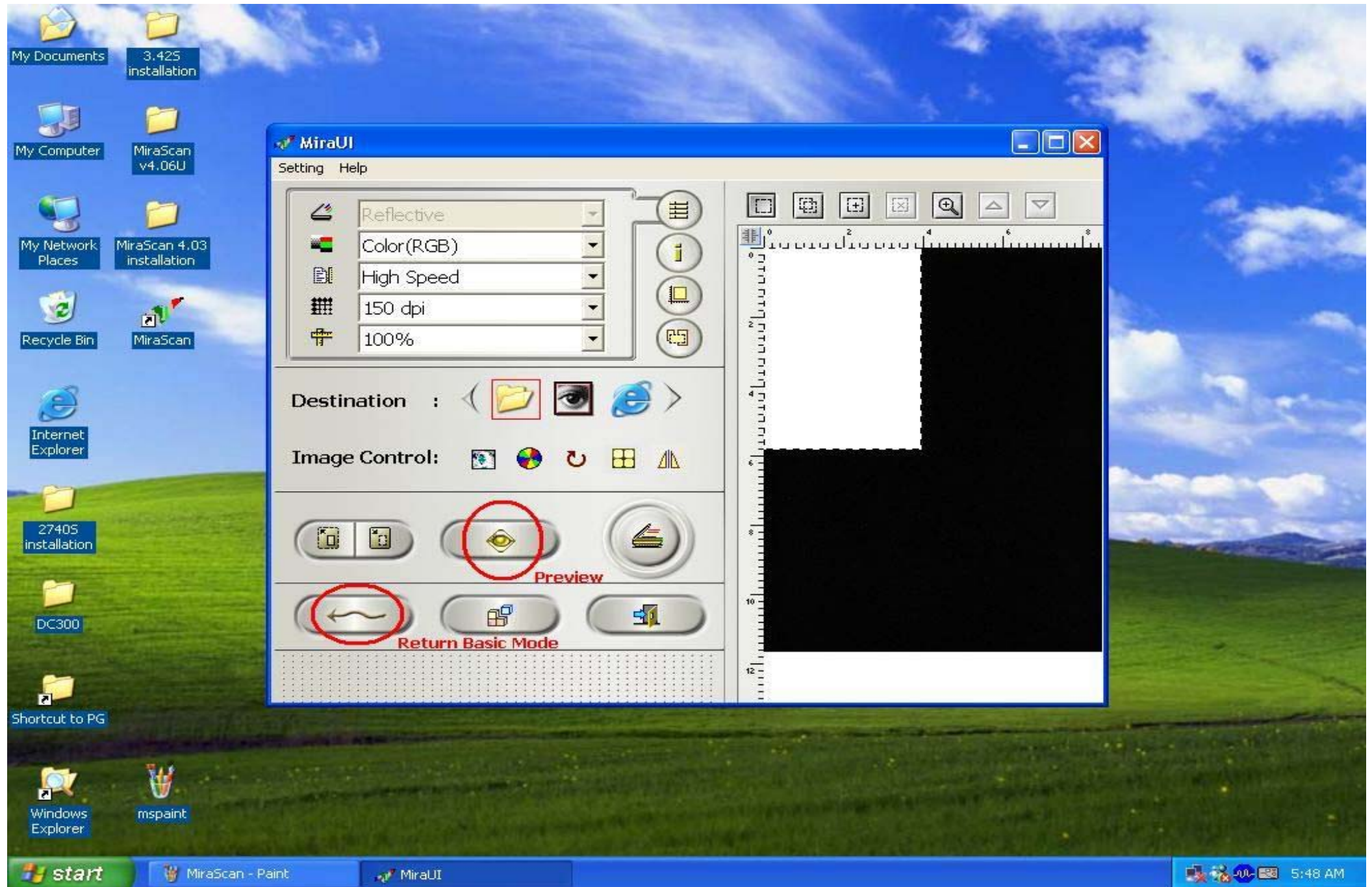
Installation Step 13: You could check scanner from Device Manager .



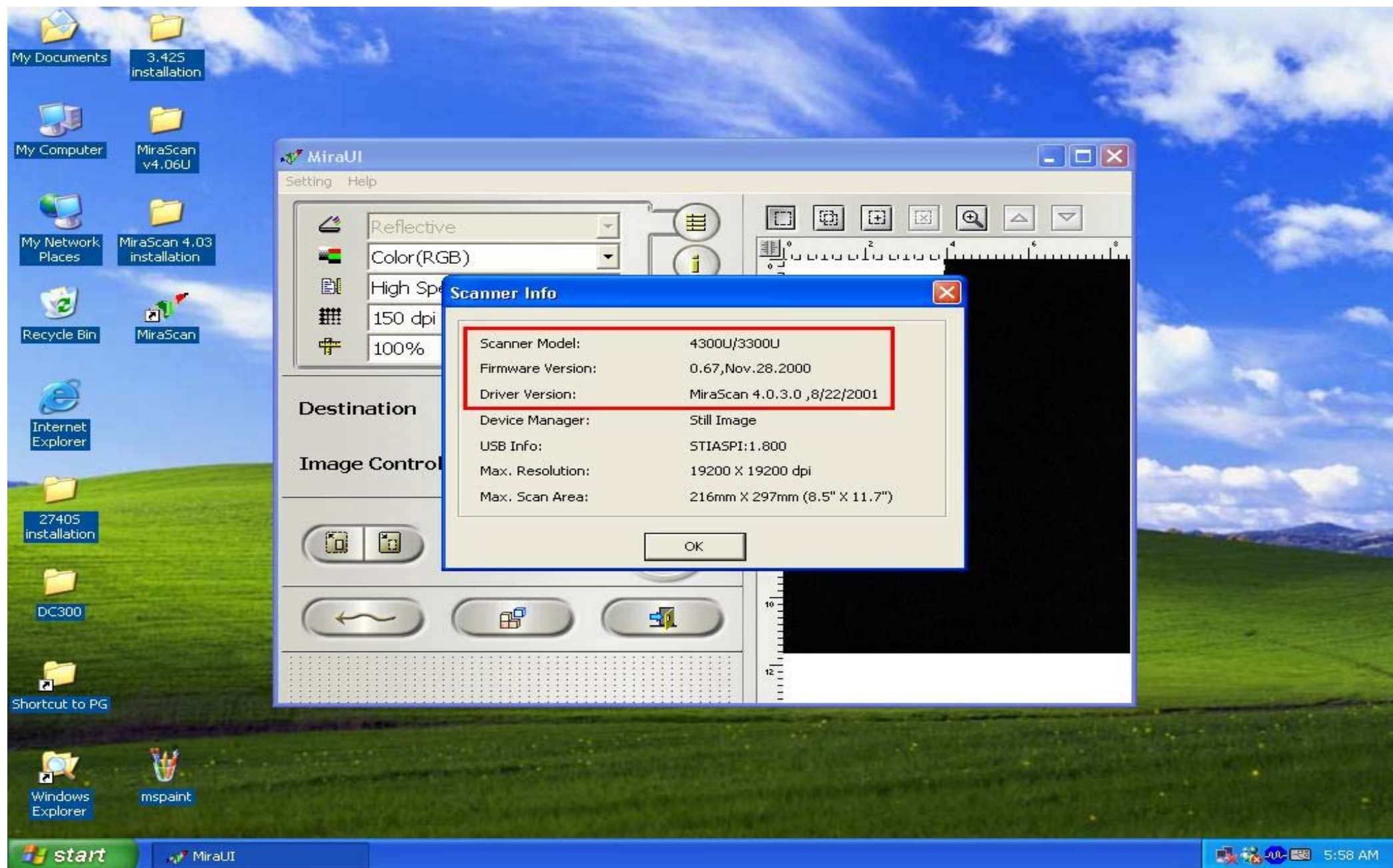
Installation Step 14: Now , you could acquire MiraScan.exe on the Desktop , and run Preview and Scan on Basic Mode .



Installation Step 15: You could change to Advanced Mode to edit your job .



Installation Step 16: If you have any problems , please see the Scanner Info from Help .



Installation Step 17: You could use Scanner and Camera Wizard to work BENQ scanner .

