

BENQ Scanner Windows XP Installation Guide

- Driver version : MiraScan V3.42S
- Scanner model : SCSI interface scanner
310S/320S/610S/620S/610ST/620ST/640S/640ST/ScanPremio ST
- SCSI card model : Acard SCSI card 6710d (PCI slot interface)
- OS : Windows XP
- Download website : <http://www.benq.com.tw/global/service/scan/drivers.htm>

Notice 1 : Please power off your scanner , and check SCSI ID value is No.2 before installation .

Notice 2 : Please setup Photoshop or PhotoExpress first before driver installation .

Notice 3 : Please check SCSI card device from Device Manager , you will find an unknown SCSI controller
(Please read Picture 01.)

Notice 4 : If you still got Error Messages after these installation steps , please E-mail to us your problems .

E-mail to :

Asia Pacific area and Taiwan : APFService@benq.com

America : support-sc@benq.com

Europe : support@benq-eu.com

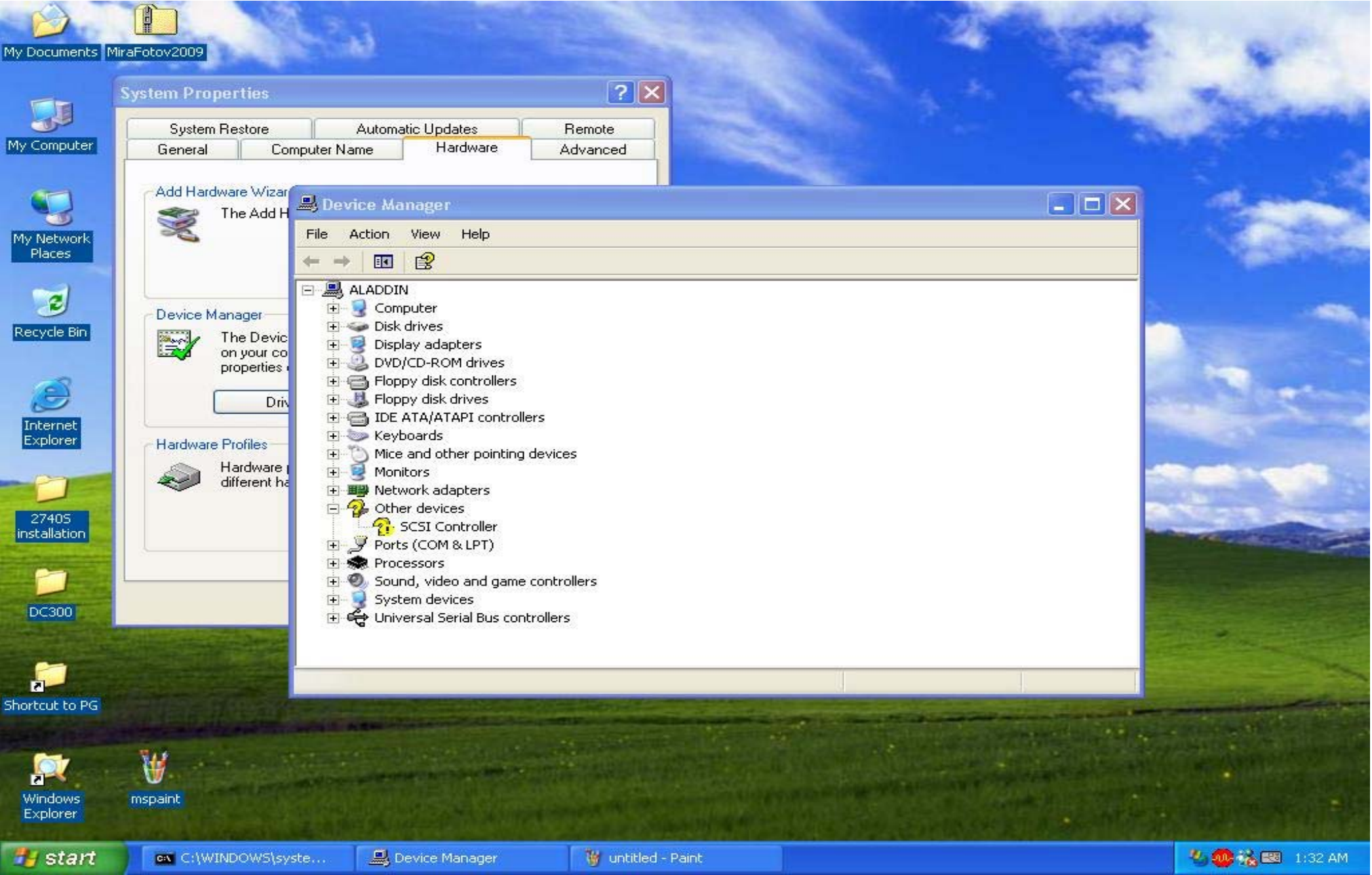
China : service@benq.com.cn

Other Sites : IMGservice@benq.com

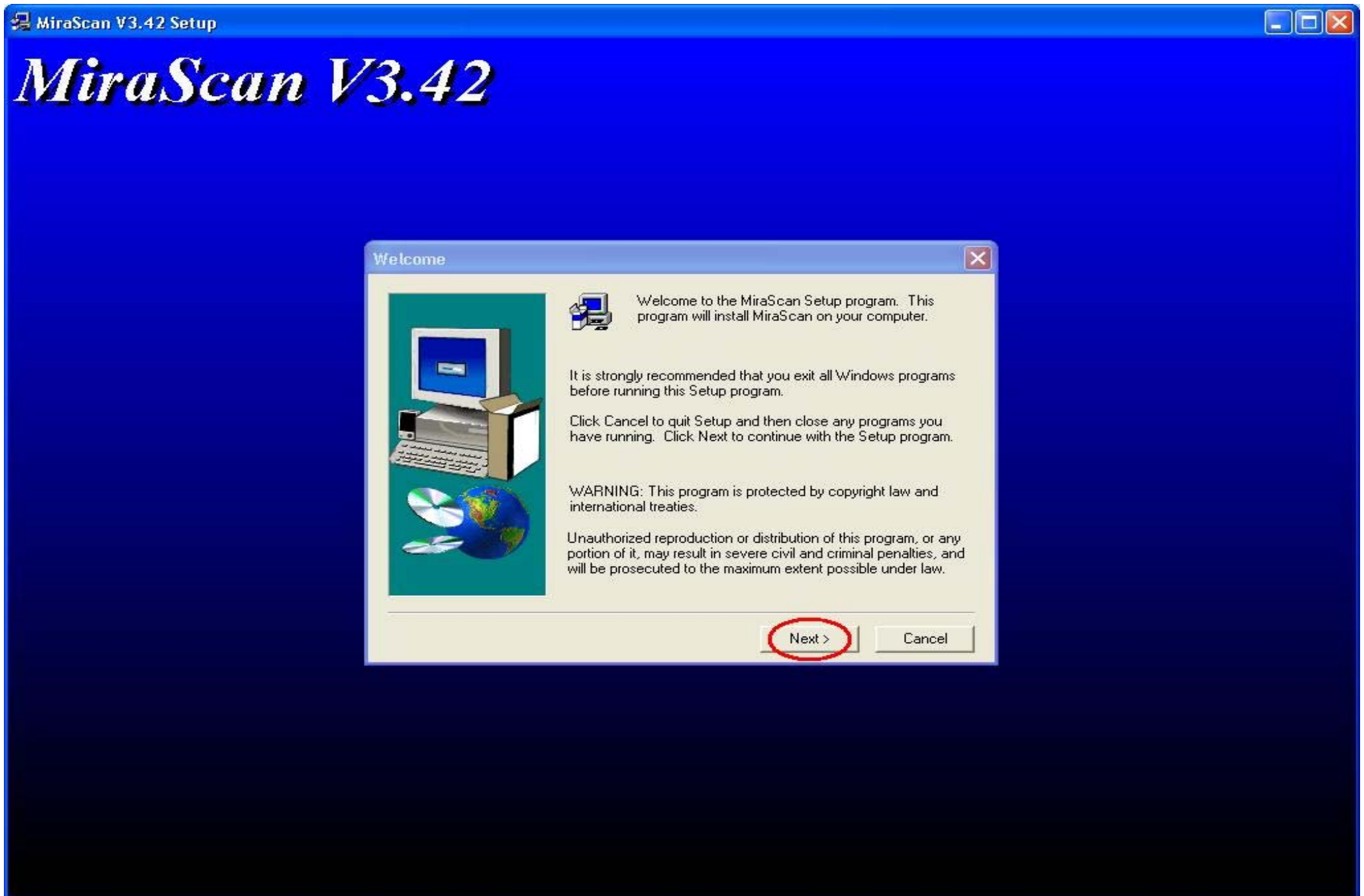
Please specify :

- 1.OS version (WinXP)
- 2.Driver version (MiraScan vX.XX)
- 3.Model No. & Serial No.
- 4.Platform spec. (Motherboard model , Platform model , Ram size , CPU spec...)
- 5.Application problem (Which steps / what situation will happen...) & Software version
- 6.Your local Country (Address)

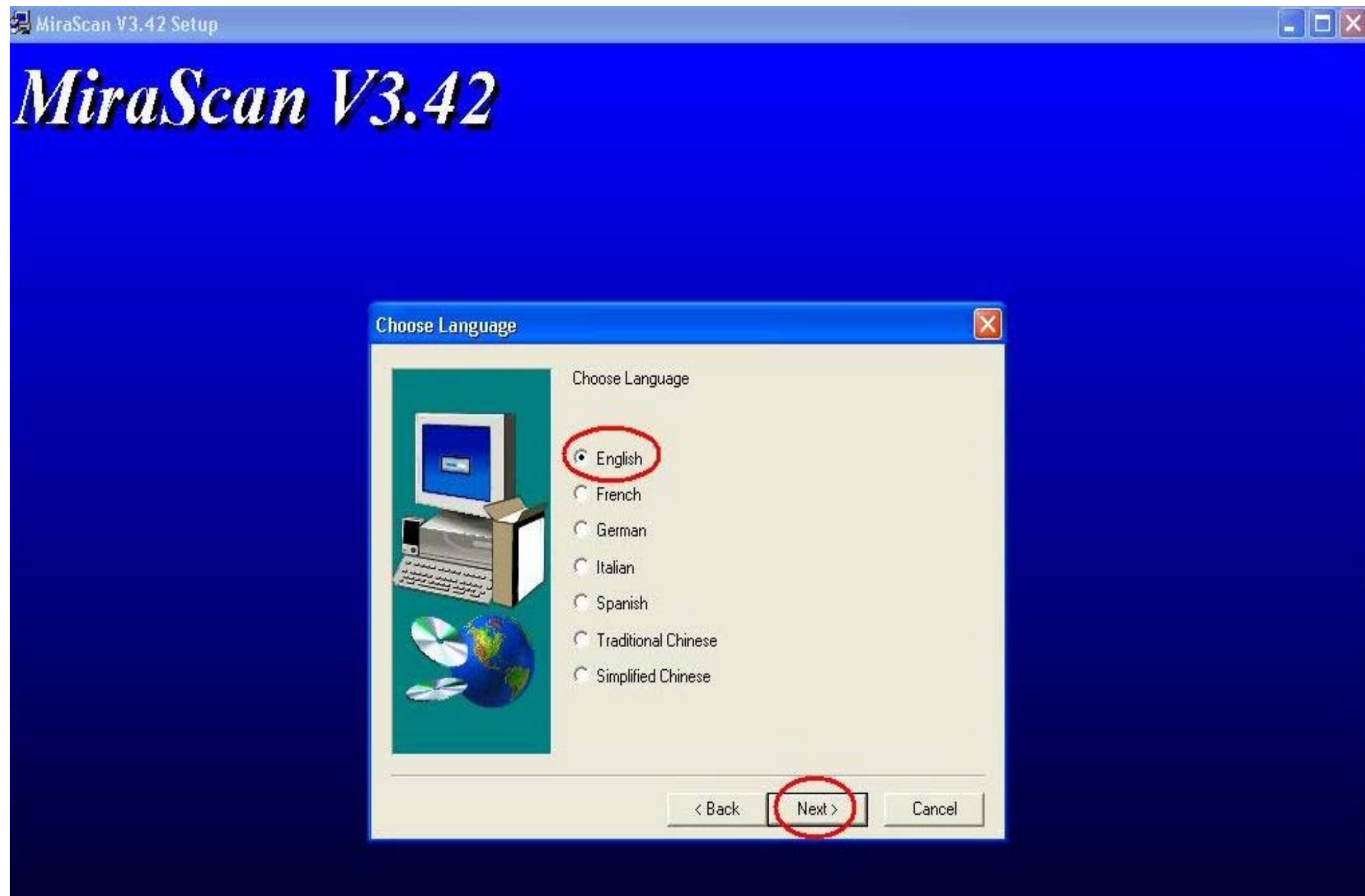
Picture 01



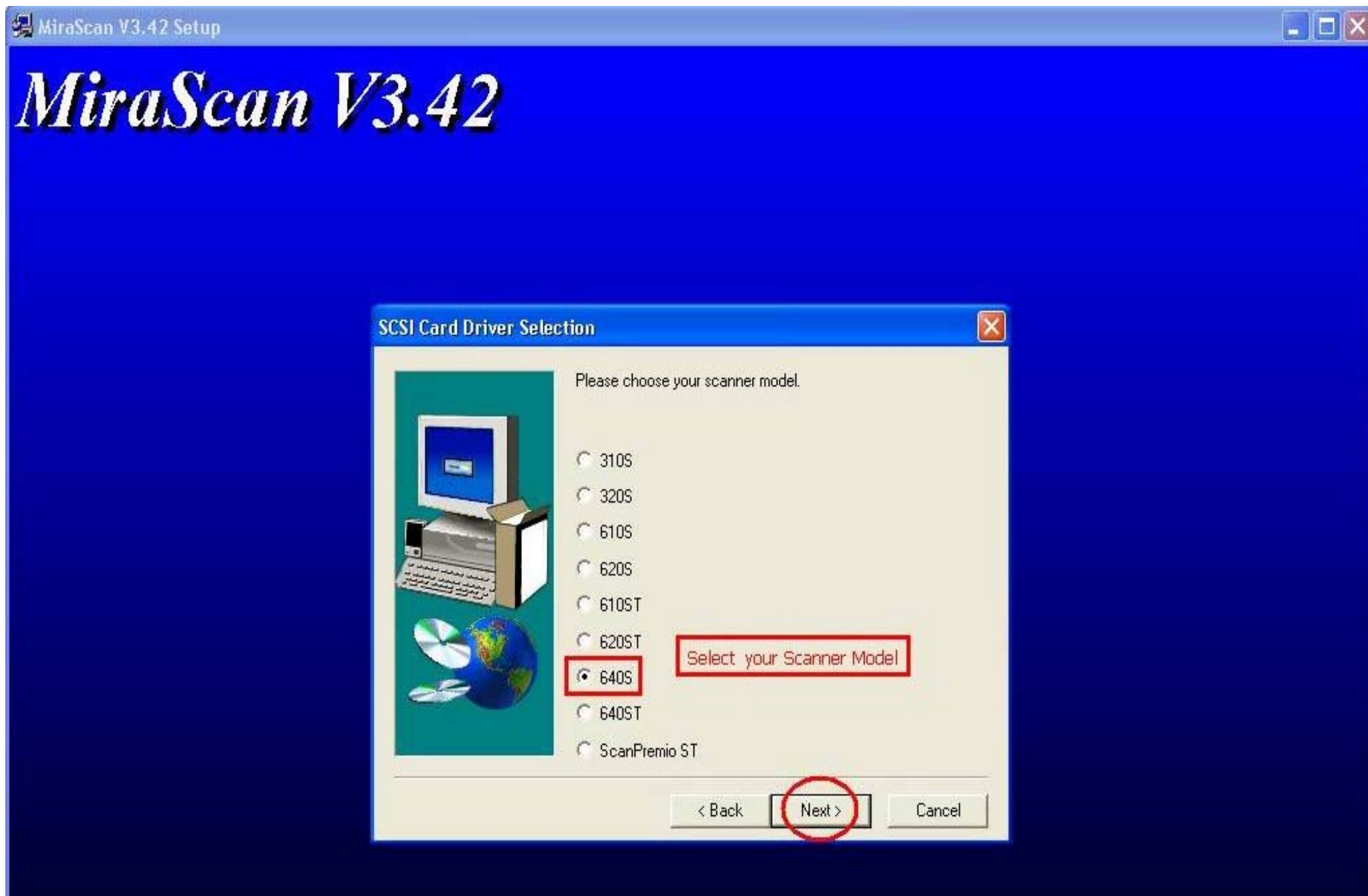
Installation Step 01: Unzip MiraScan V3.42S , click setup.exe , click Next .



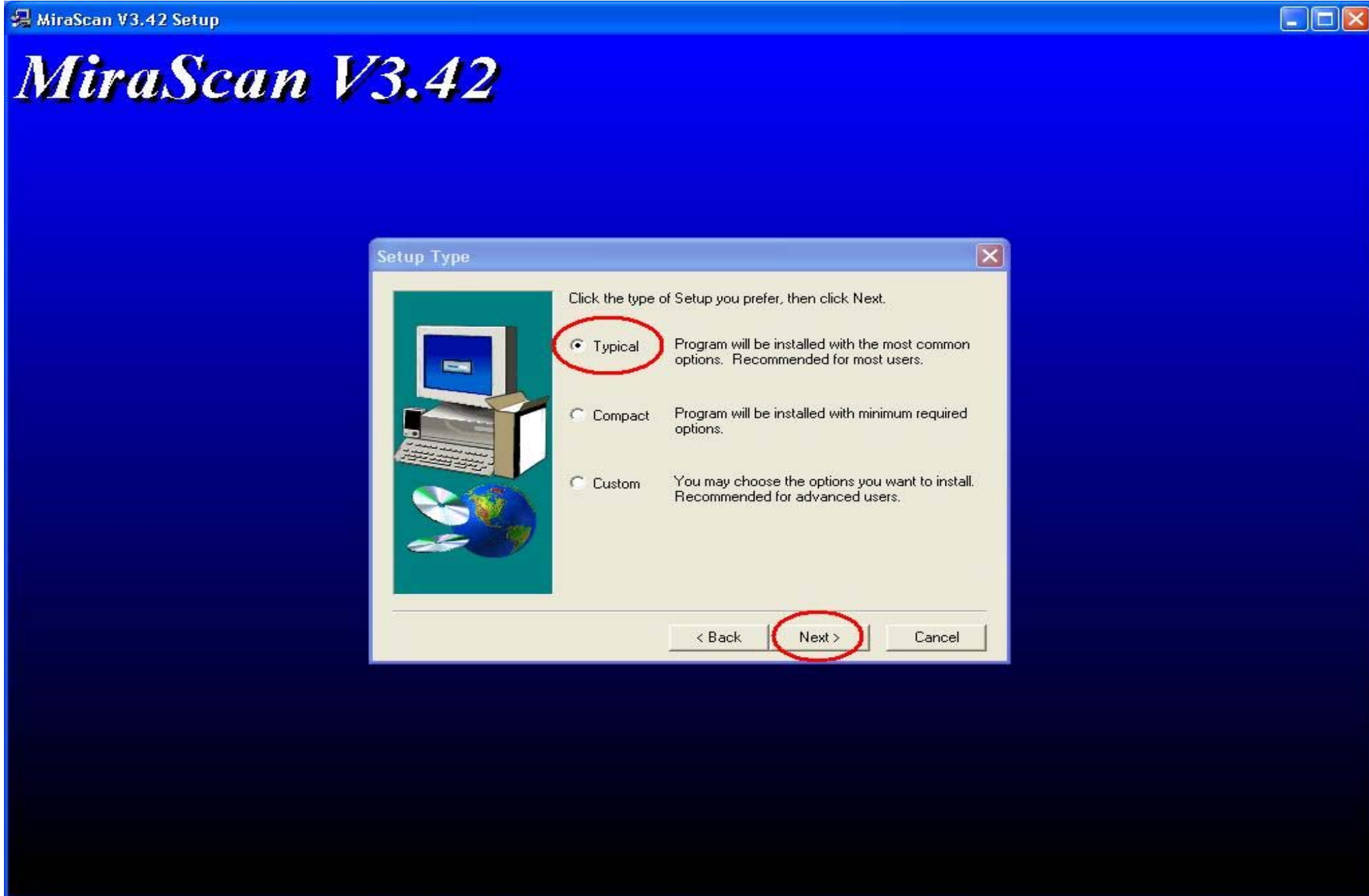
Installation Step 02: Choose Language , you just could choose English or Traditional Chinese version .



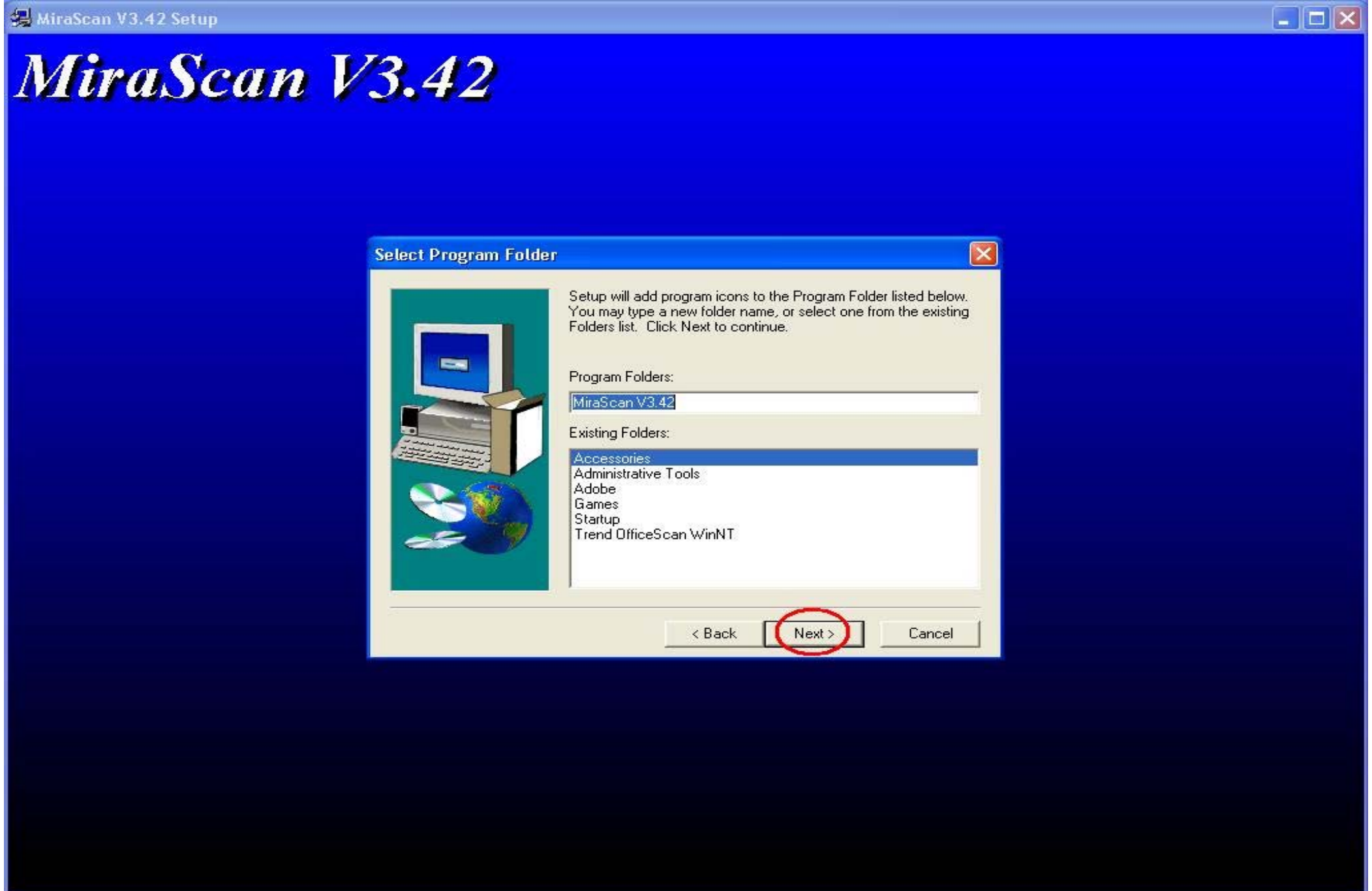
Installation Step 03: Please choose your scanner model , then click Next .



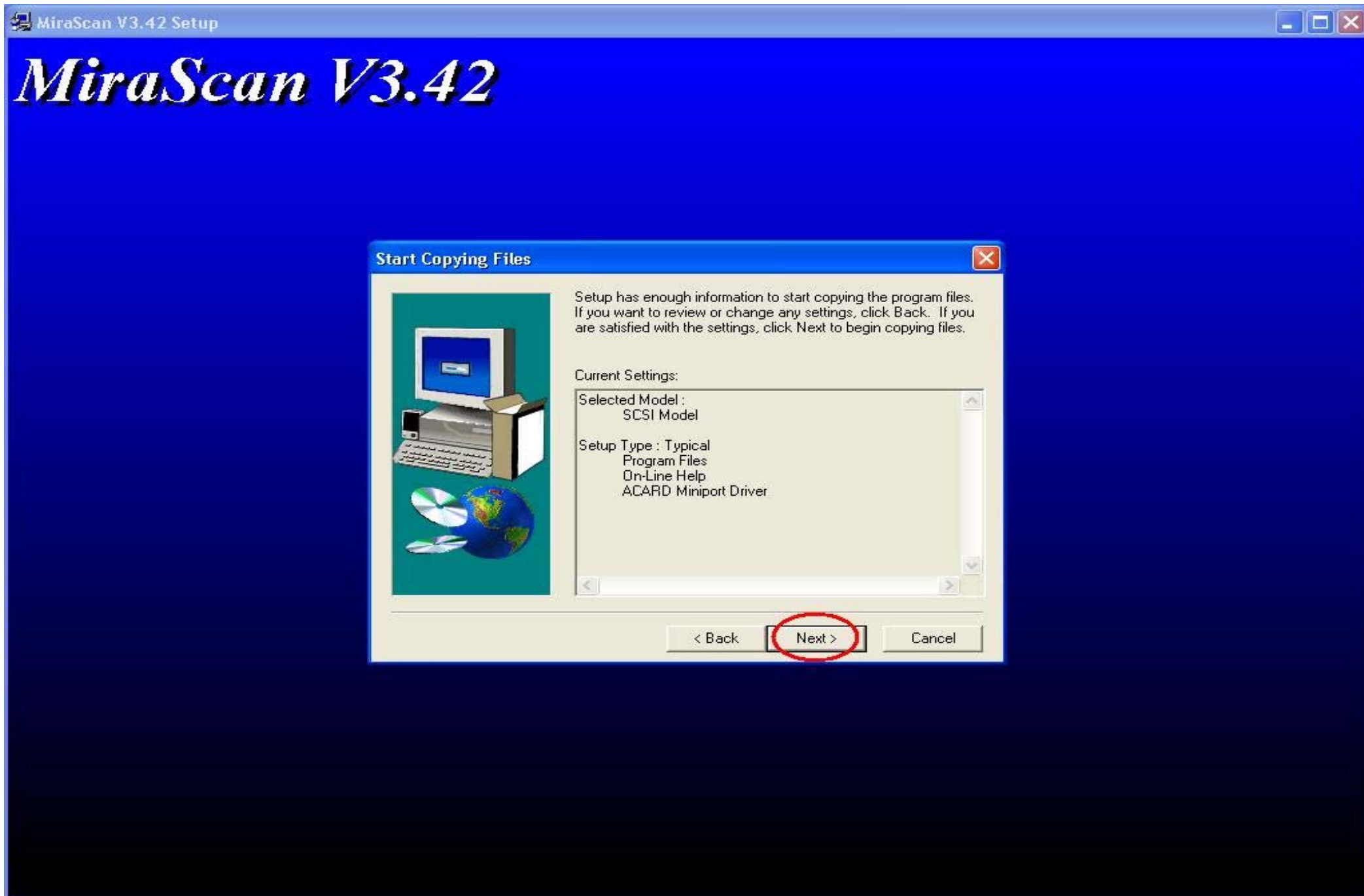
Installation Step 04: Choose Setup Type , default is Typical type , then click Next .



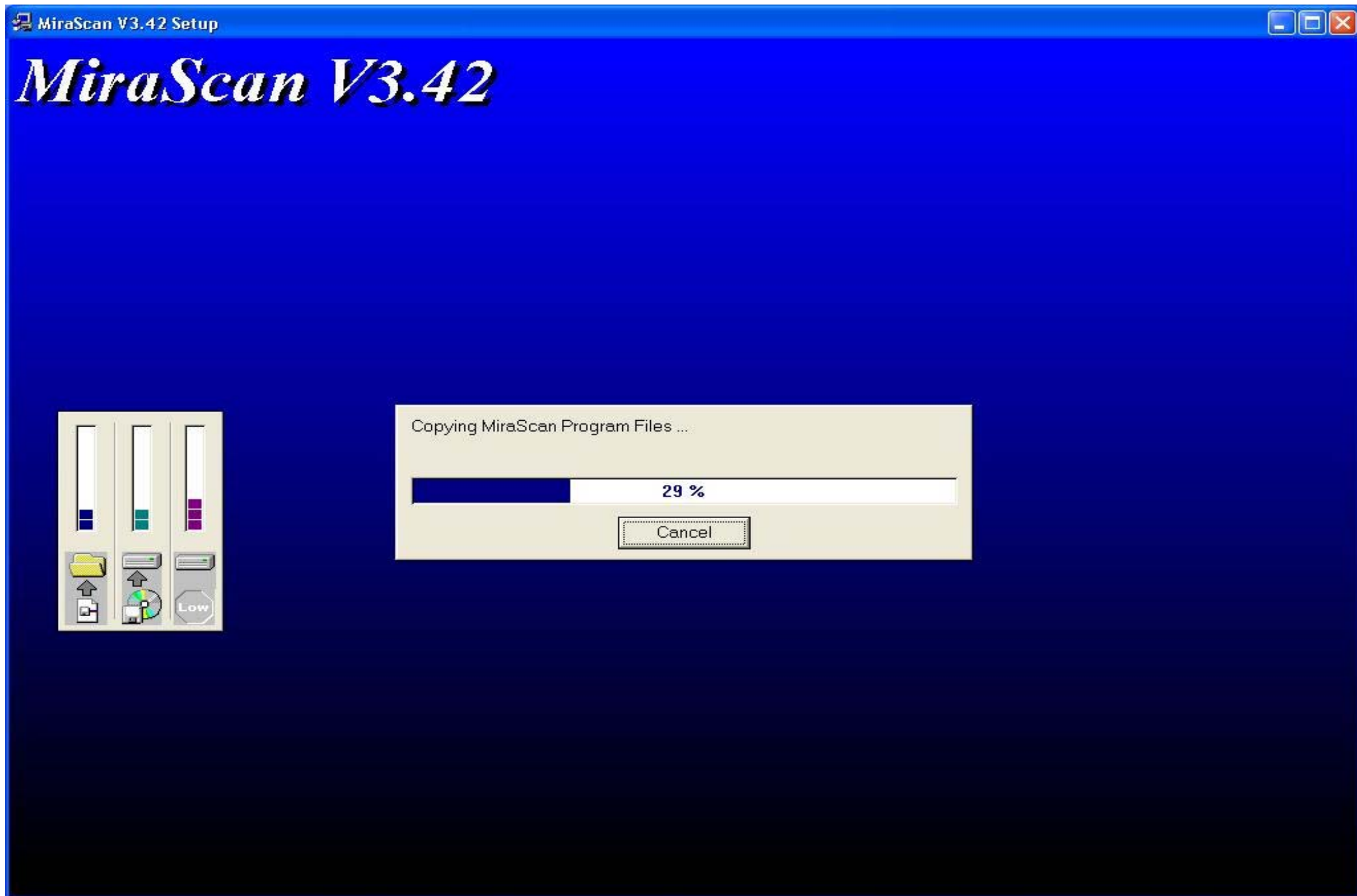
Installation Step 05: Select Program Folders Name , then Click Next .



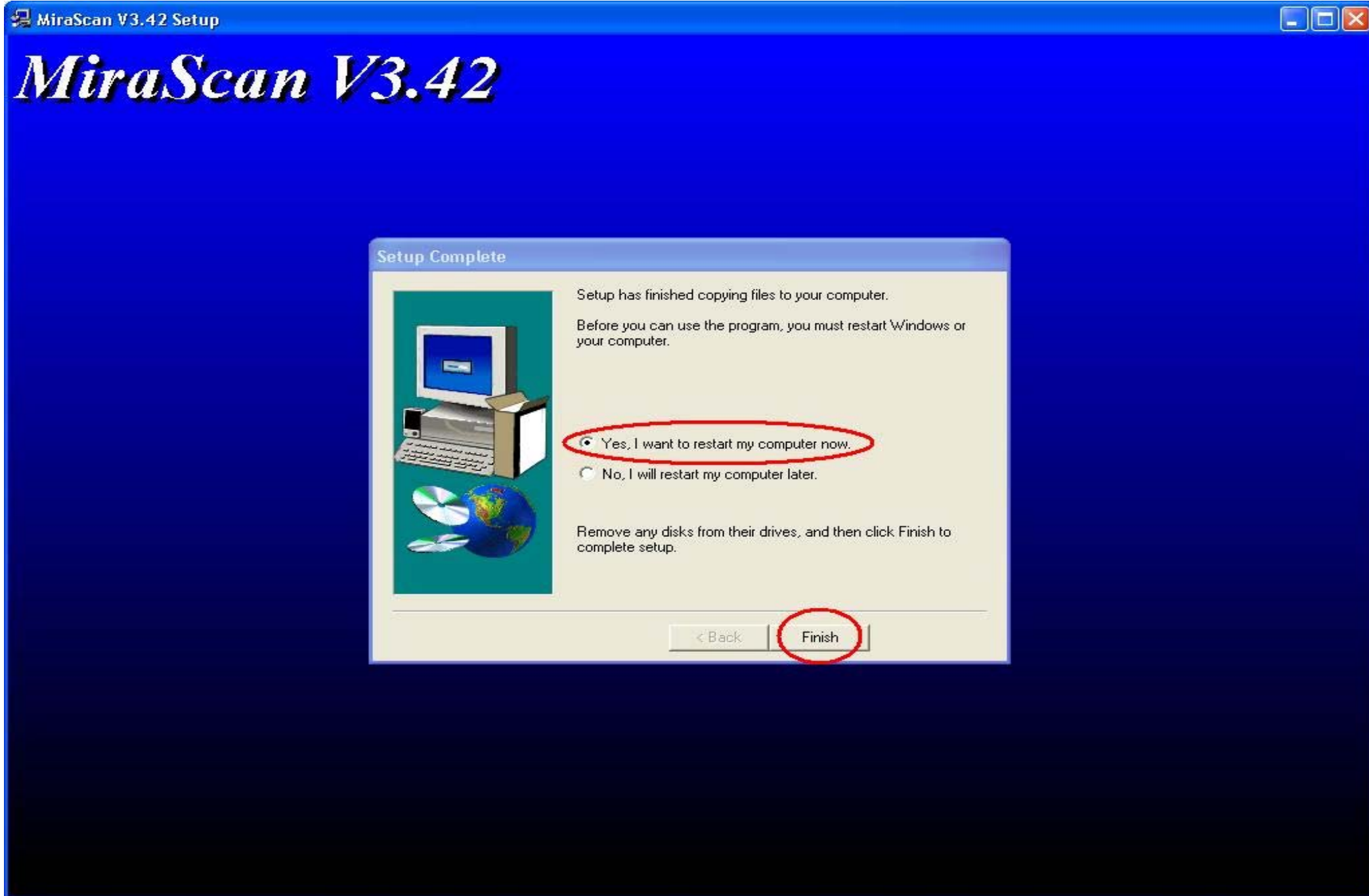
Installation Step 06: Start Copying Files , then click Next .



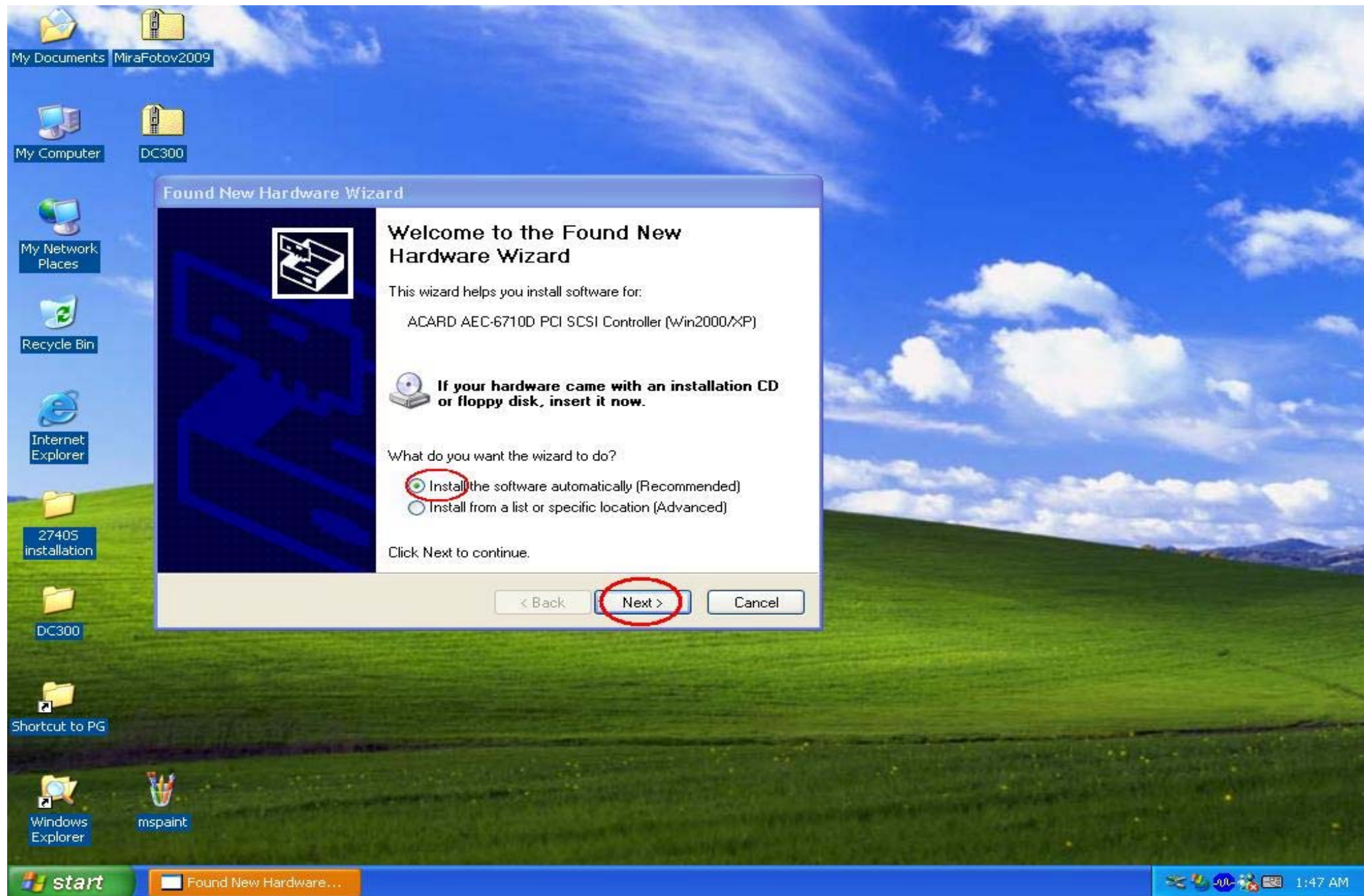
Installation Step 07: Copying MiraScan Program Files , please wait for some seconds .



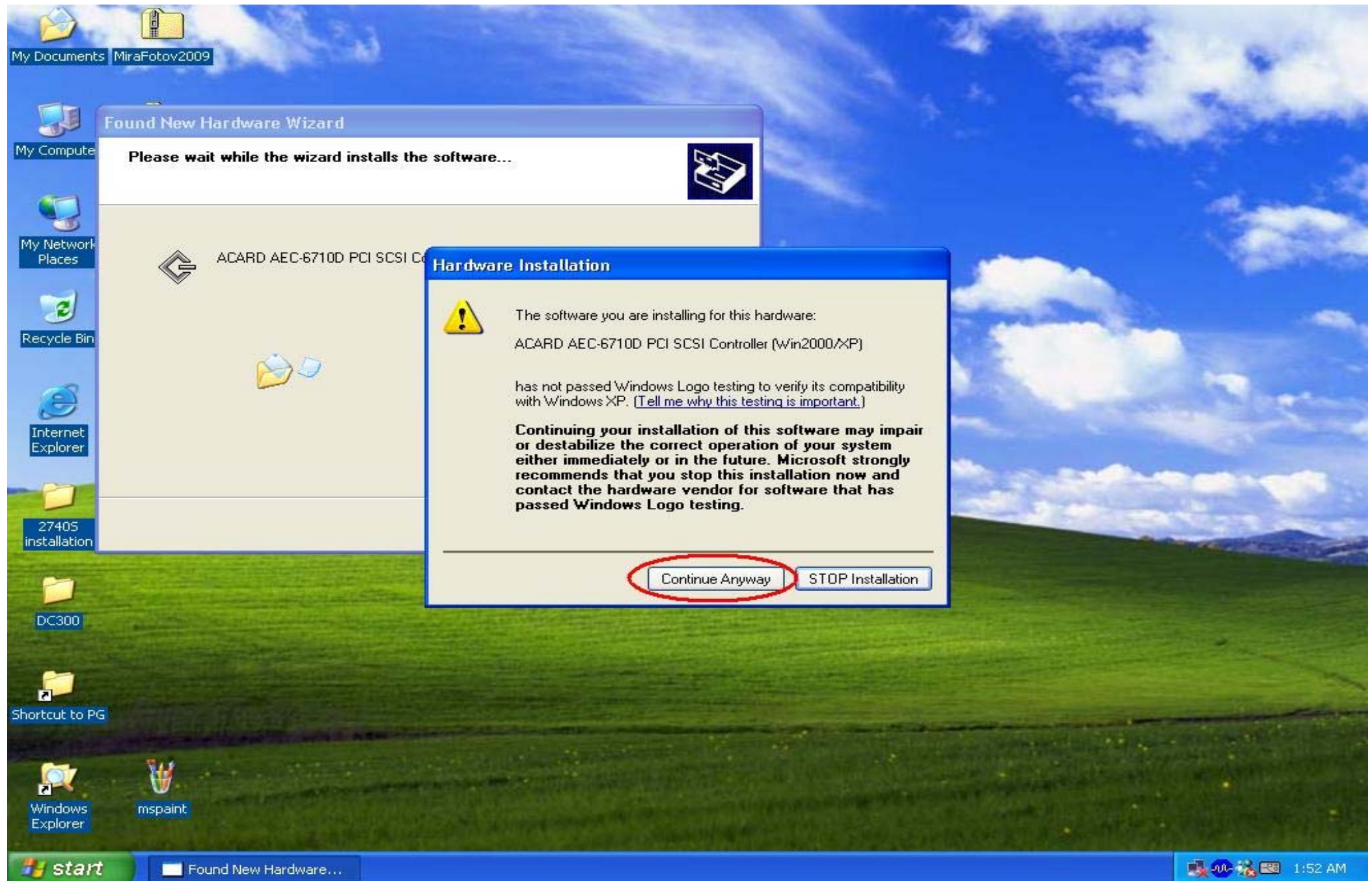
Installation Step 08: Setup Complete , please click Finish and restart your computer .



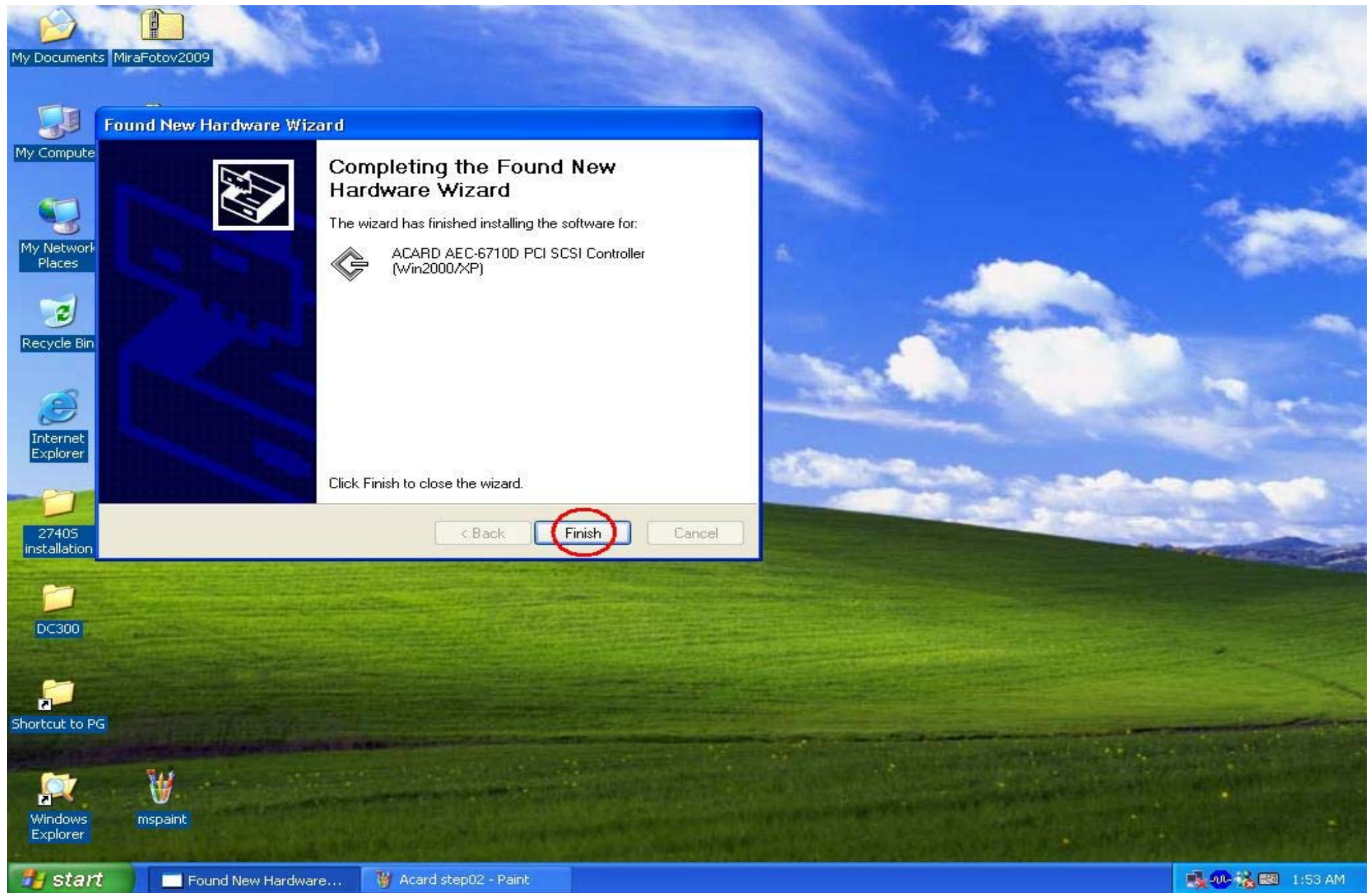
Installation Step 09: After login on Windows XP , system will detect Acard SCSI card , click Next .



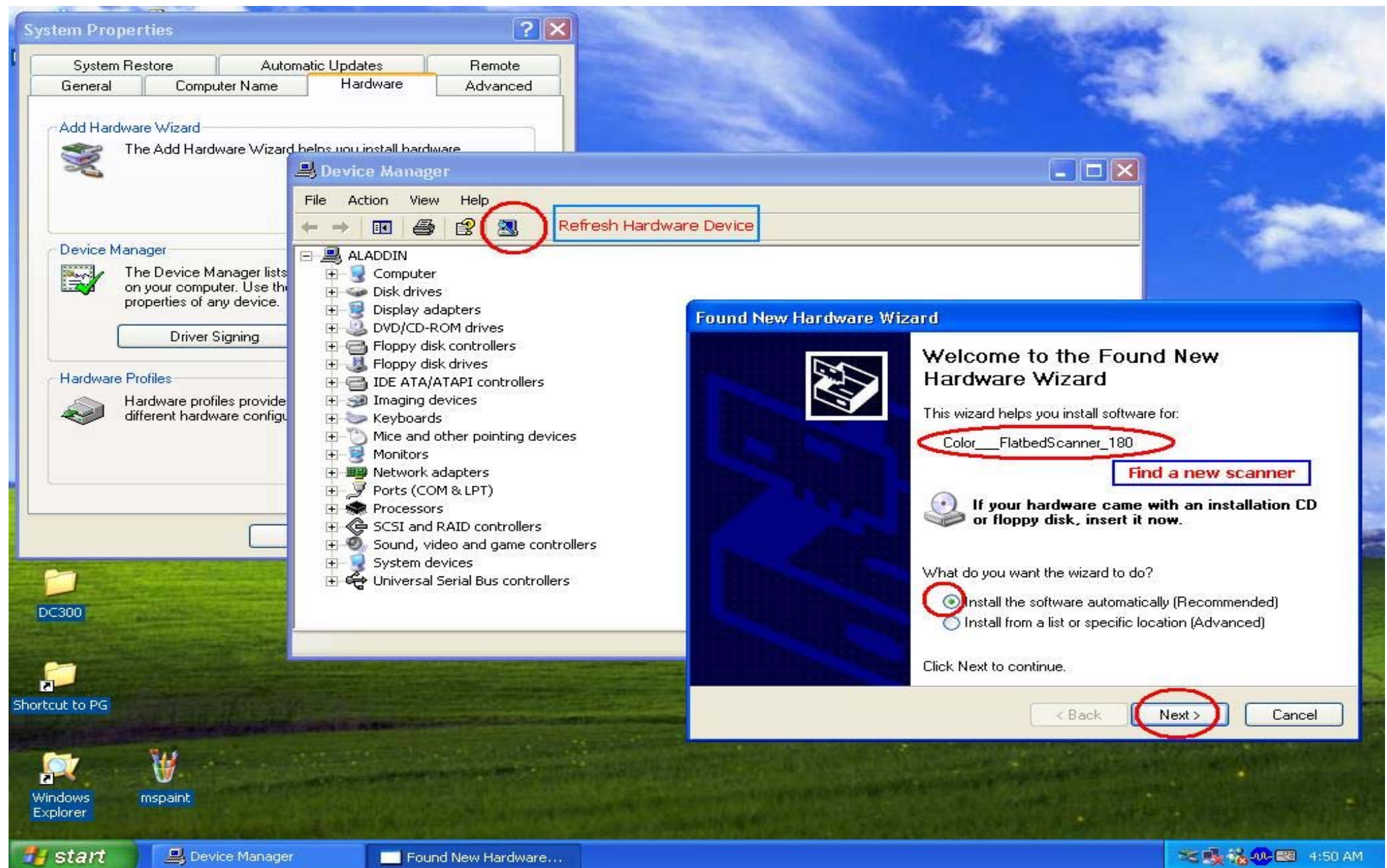
Installation Step 10: System will show Notice message , it's safe to click Continue Anyway to install .



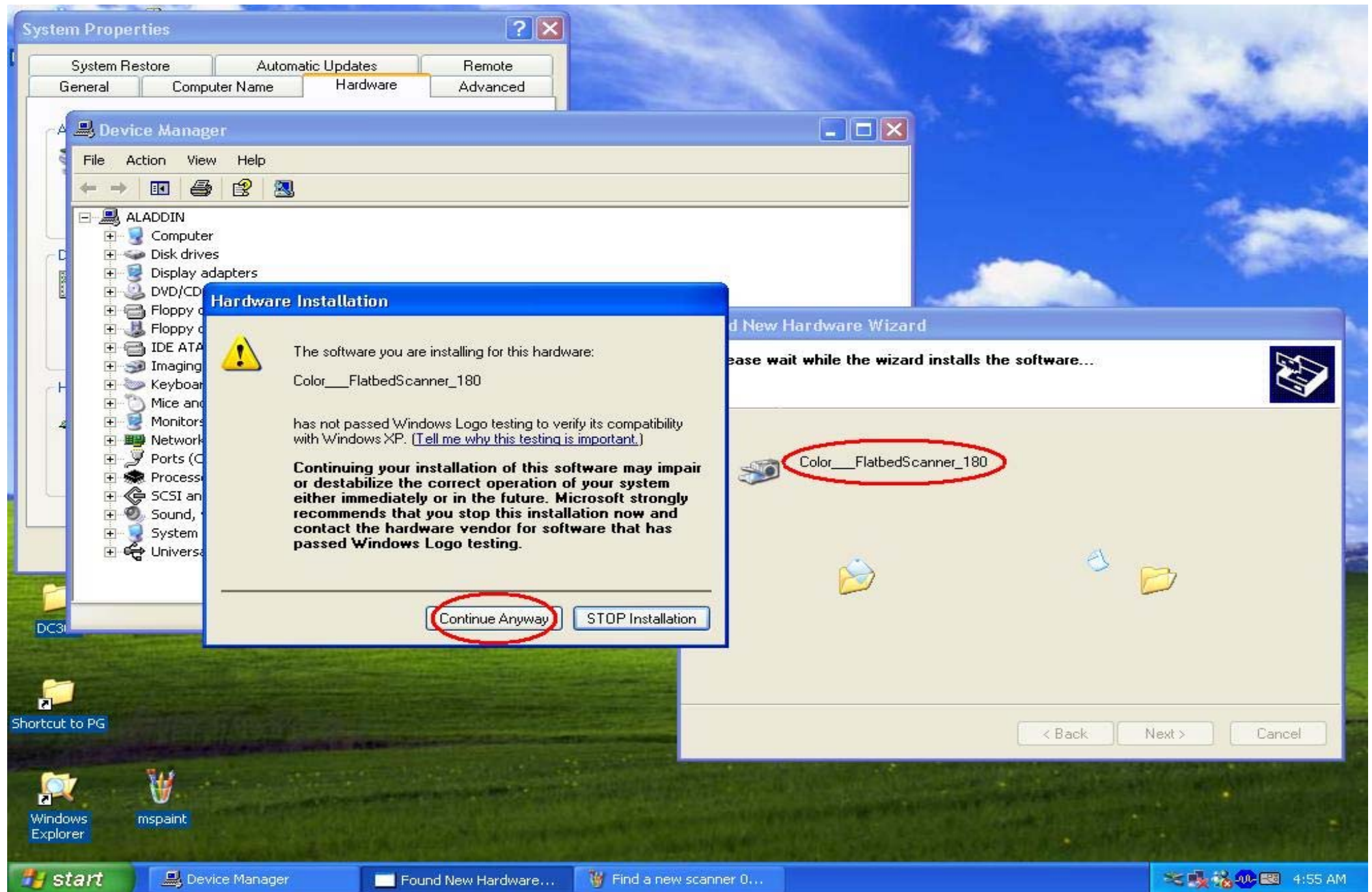
Installation Step 11: Finish Acard AEC-6710D PCI SCSI Controller setup , click Finish .



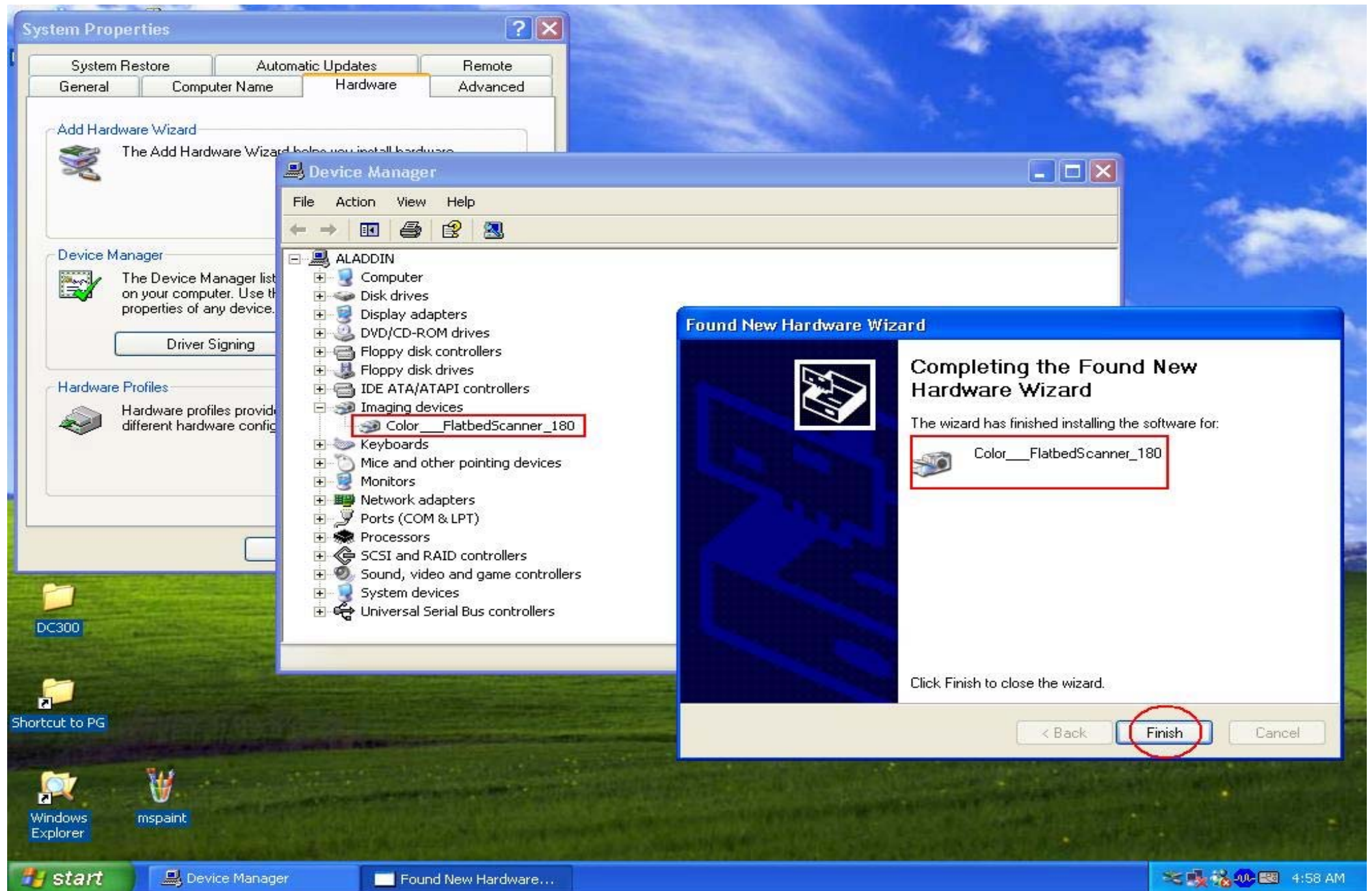
Installation Step 12: Now, power on your scanner , please Refresh Hardware Device from Device Manager , then system will detect new device automatically , then click Next .



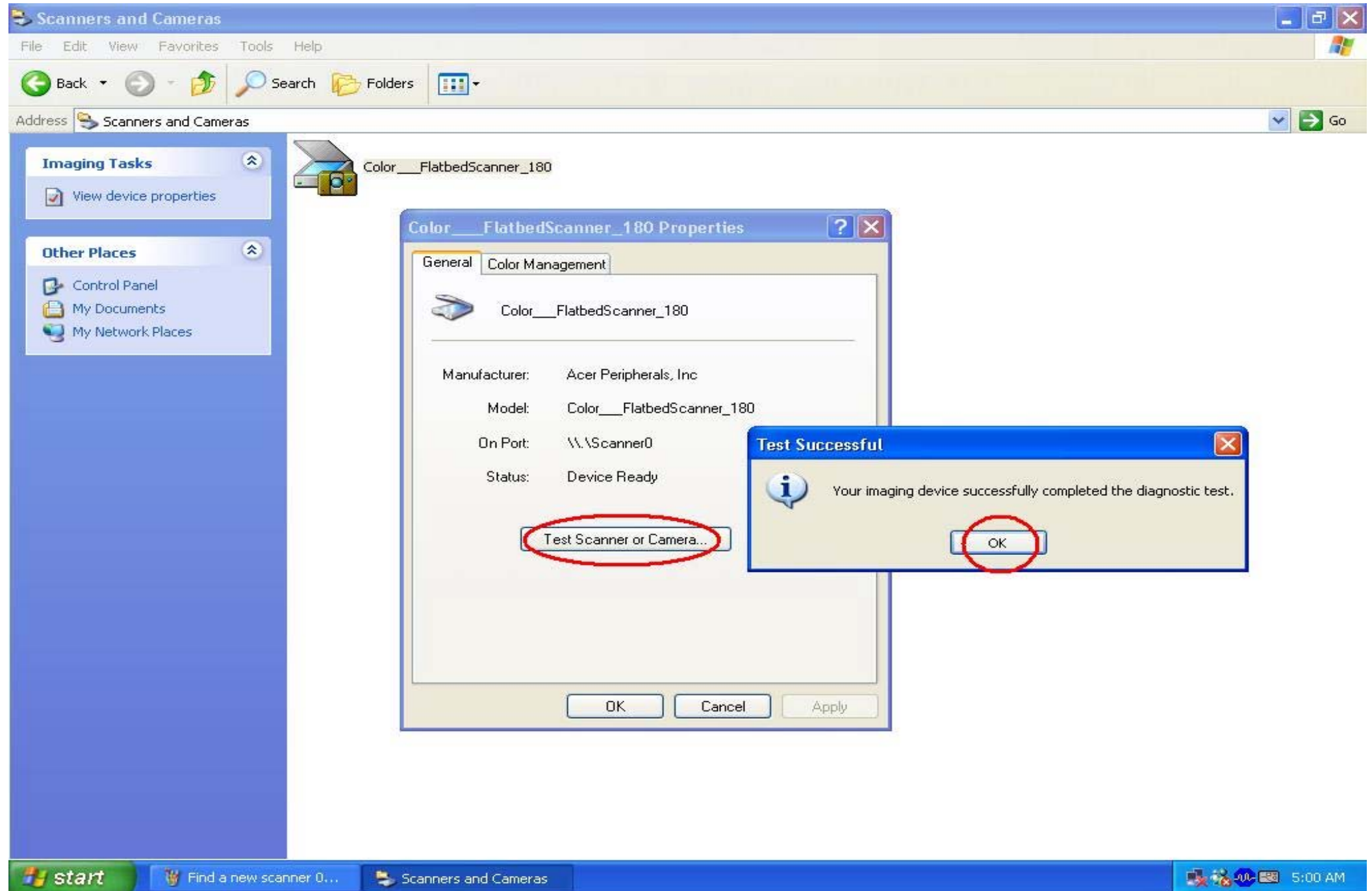
Installation Step 13: During Copying Files , system will show Notice Message , it's safe to click Continue Anyway to install .



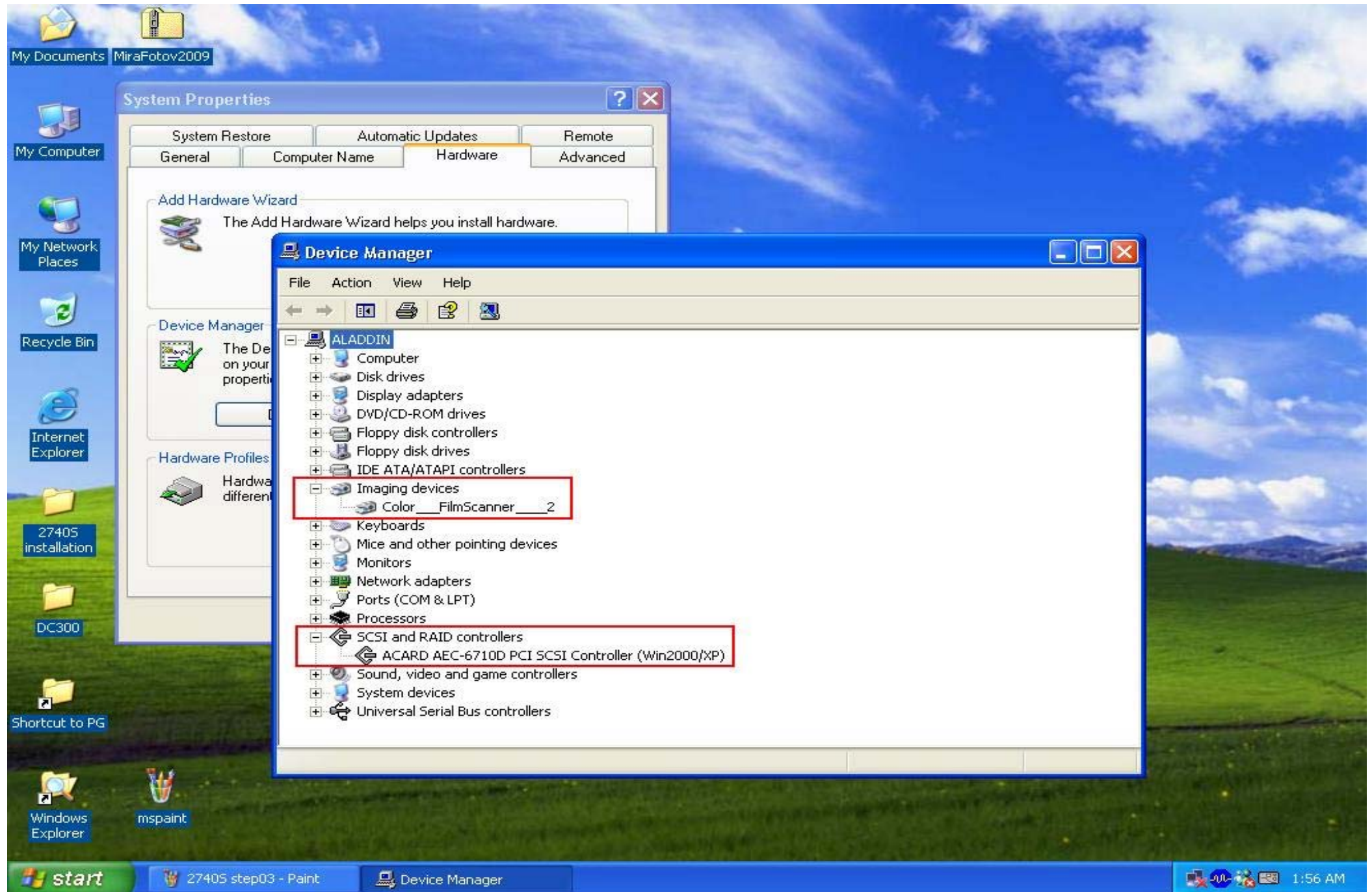
Installation Step 14: Finish scanner installation , click Finish .



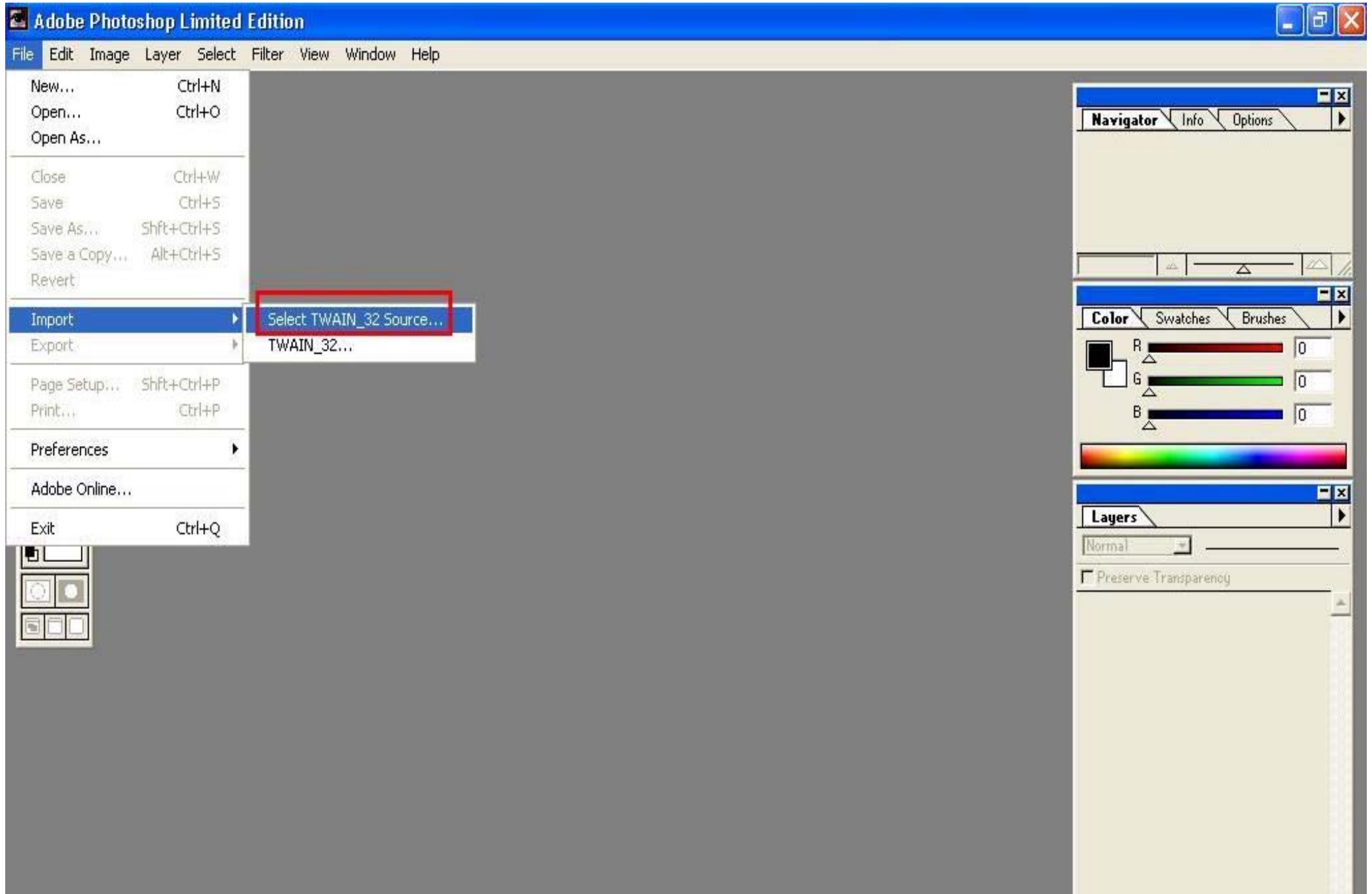
Installation Step 15: Now , you could check your scanner is OK from Scanner and Cameras control panel .



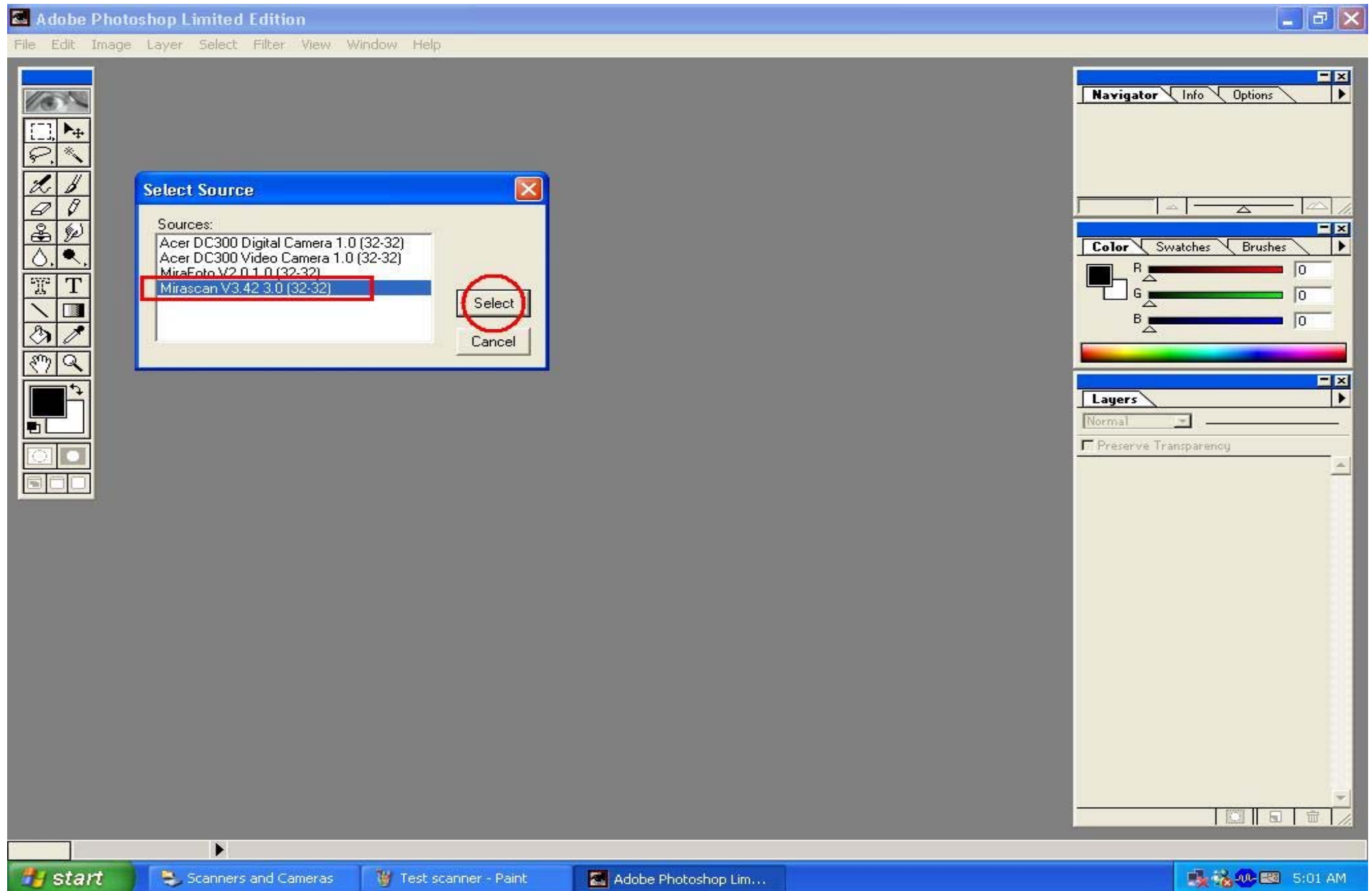
Installation Step 16: Also , you could check them from Device Manager .



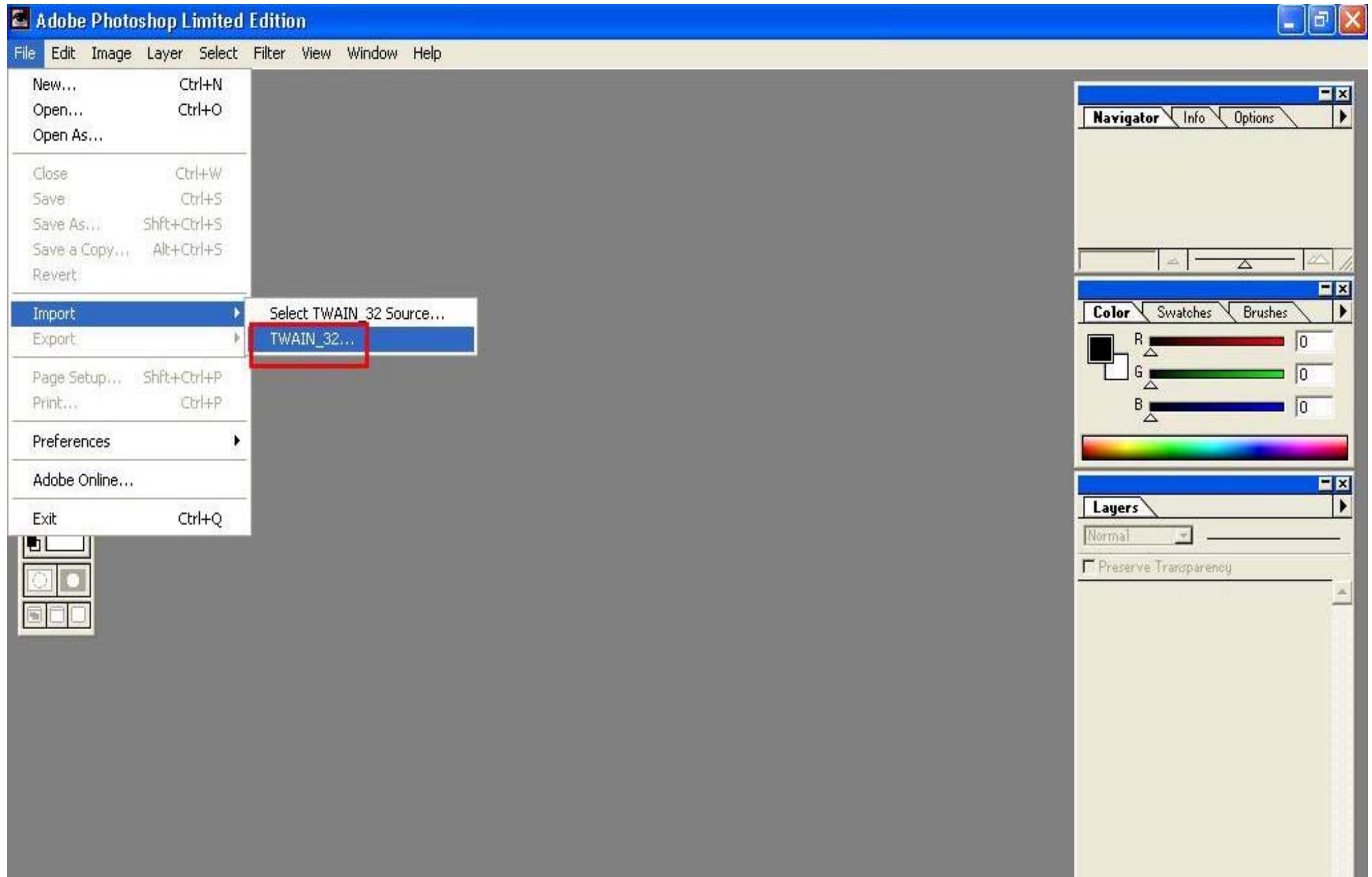
Installation Step 17: Acquire MiraScan v3.42S from Photoshop , select Twain_32 Source



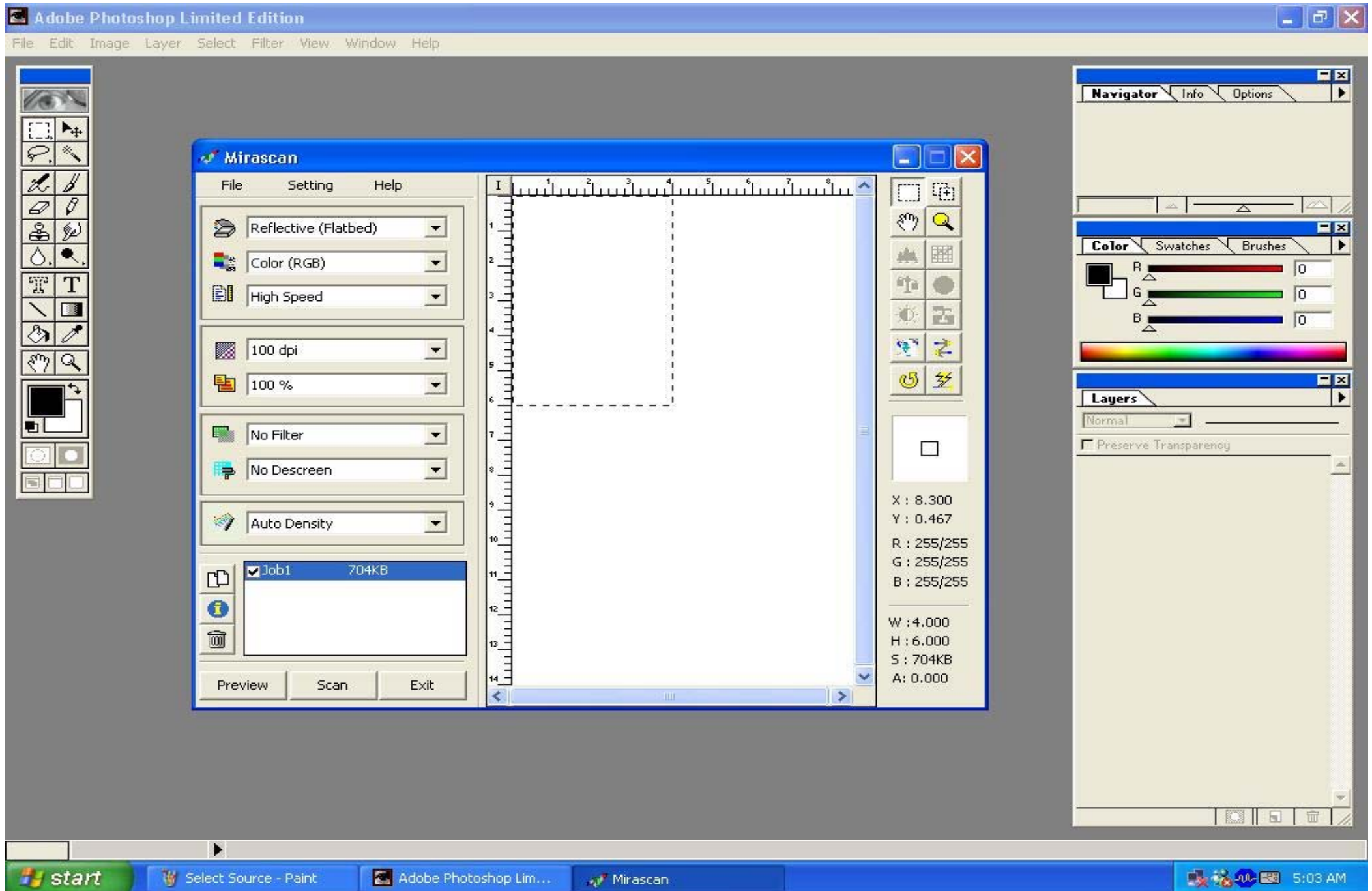
Installation Step 18: Select Source MiraScan V3.42 3.0(32-32) .



Installation Step 19: Then Click Twain_32 , MiraScan will pop-up automatically .



Installation Step 20: MiraScan pop-up on the screen , then you could click Preview bottom .



Installation Step 21: If scanner show Error code after preview , please email Scanner Info and FW/Driver ver. for analyses .

