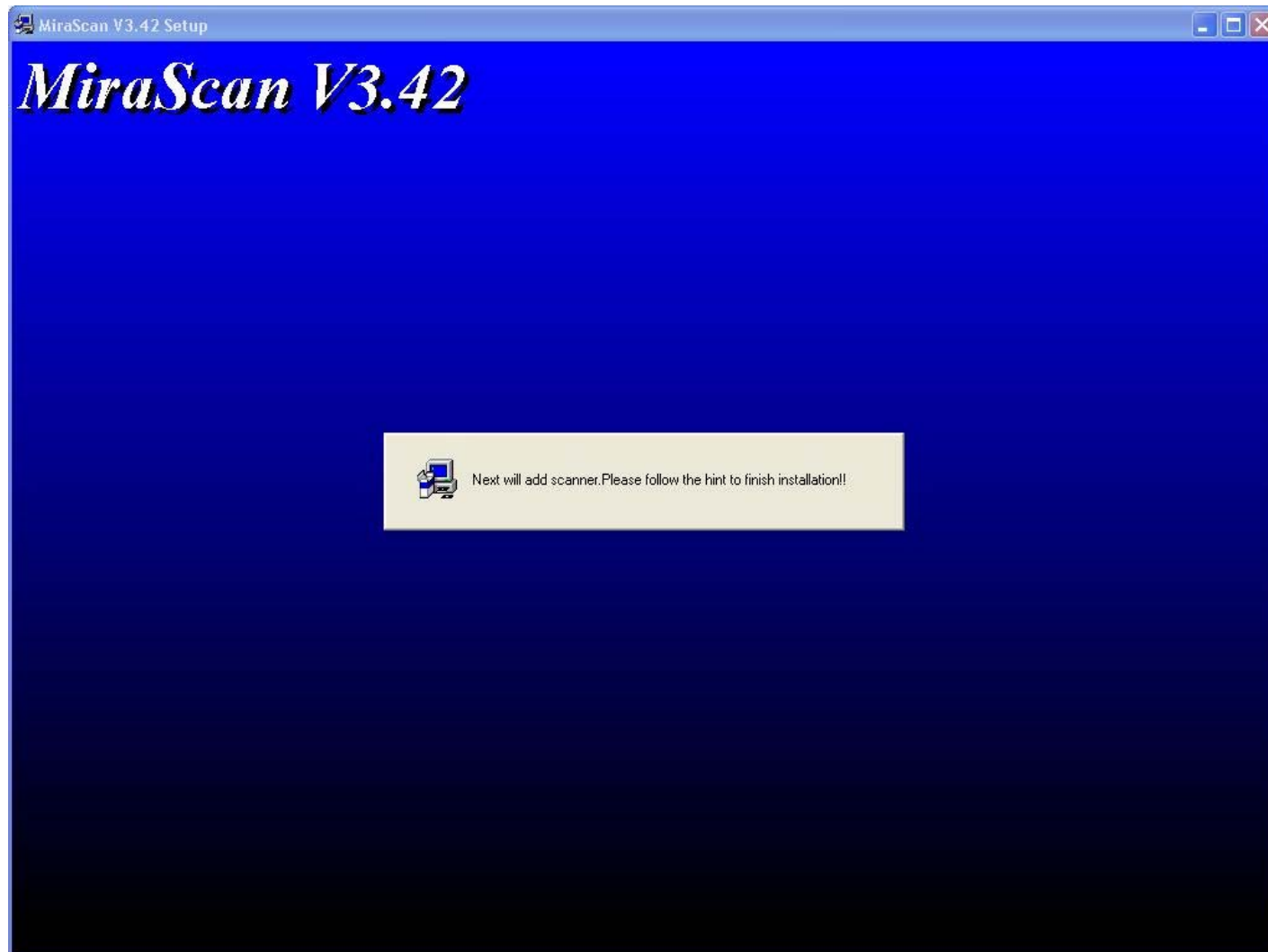
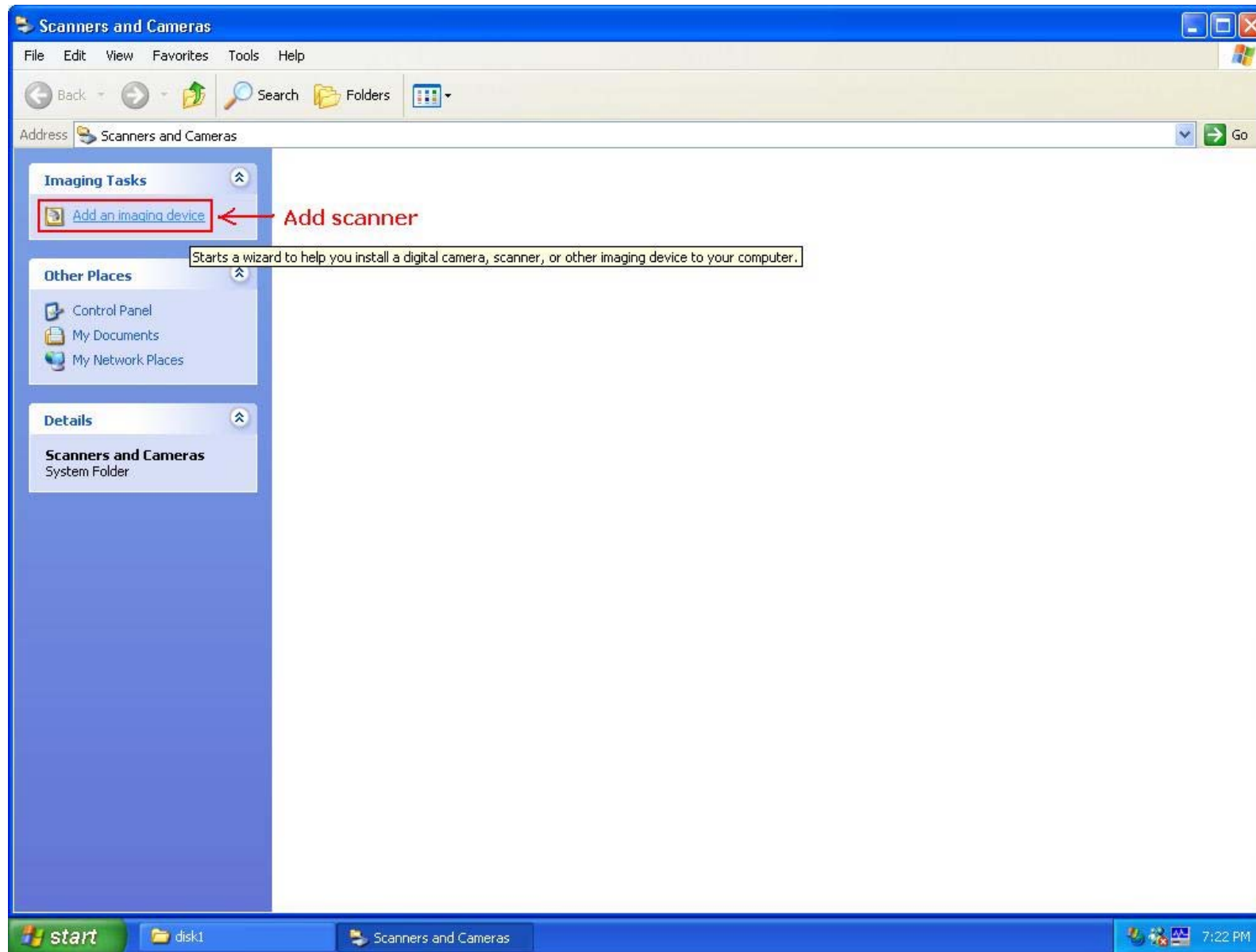


How to use P-model scanners in Windows xp ?

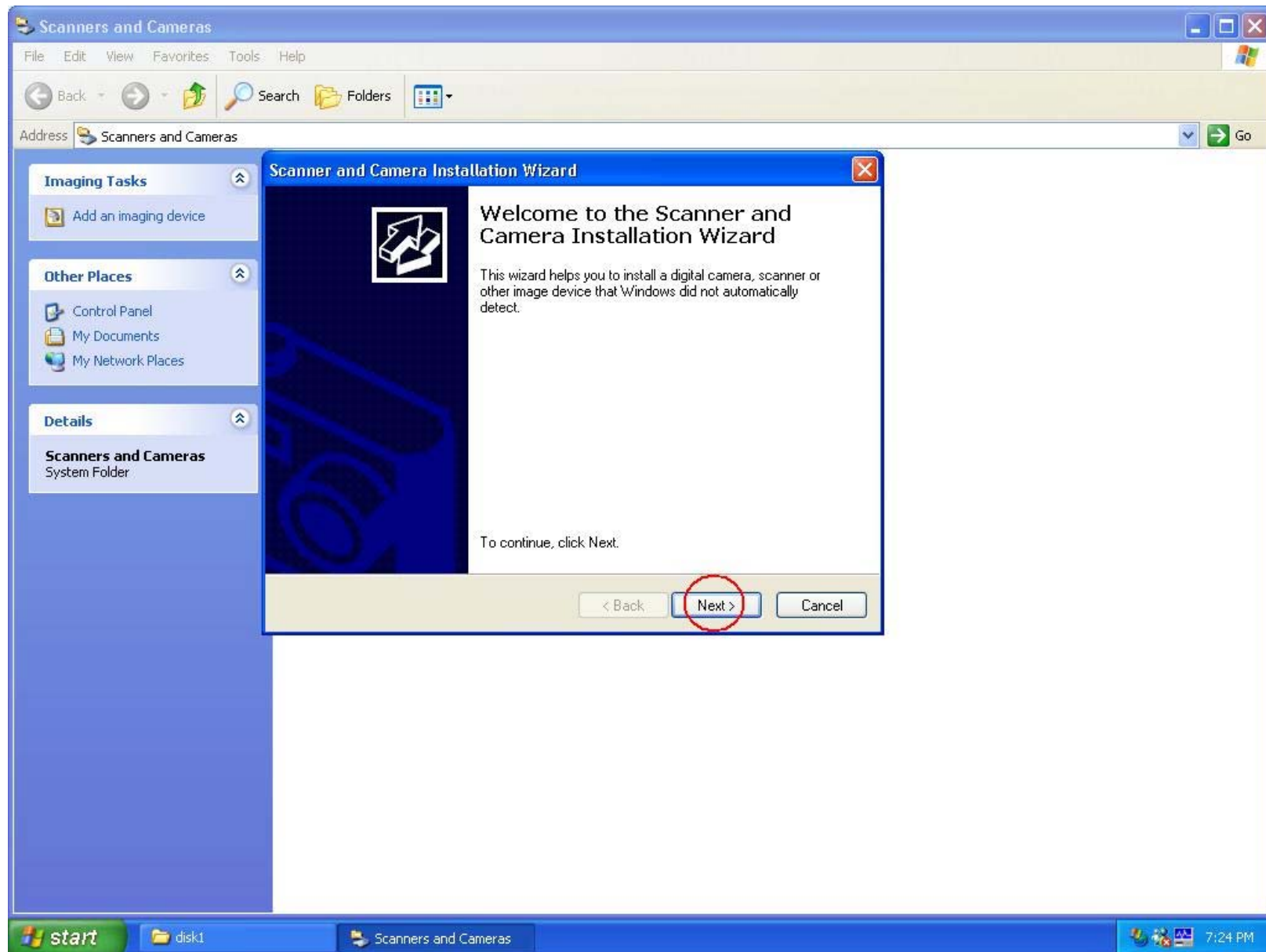
1. Download MiraScan v3.423 from the web : <http://www.benq.com.tw/global/service/scan/drivers.htm>
2. After installation , system will suggest you to add a scanner :

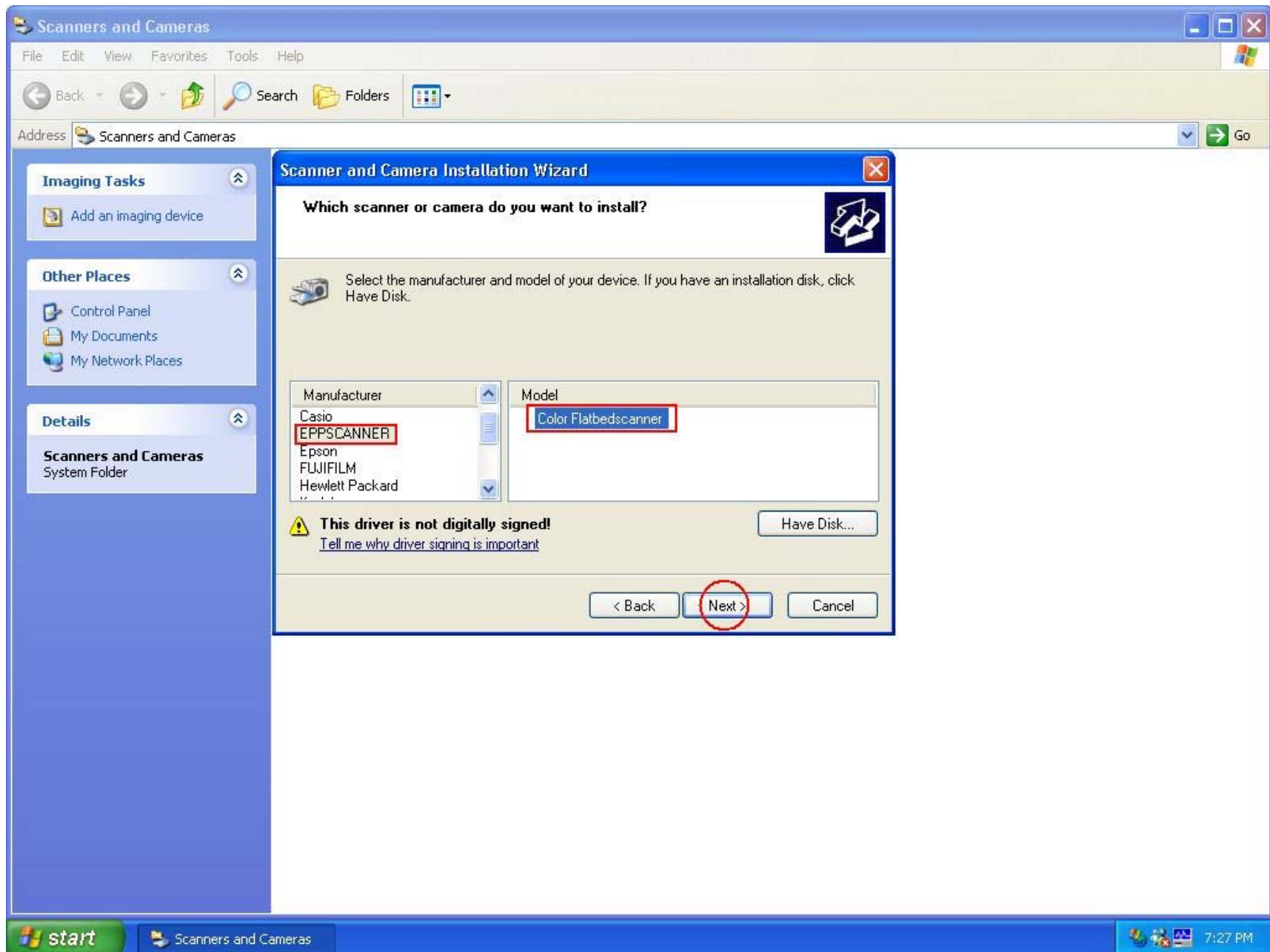


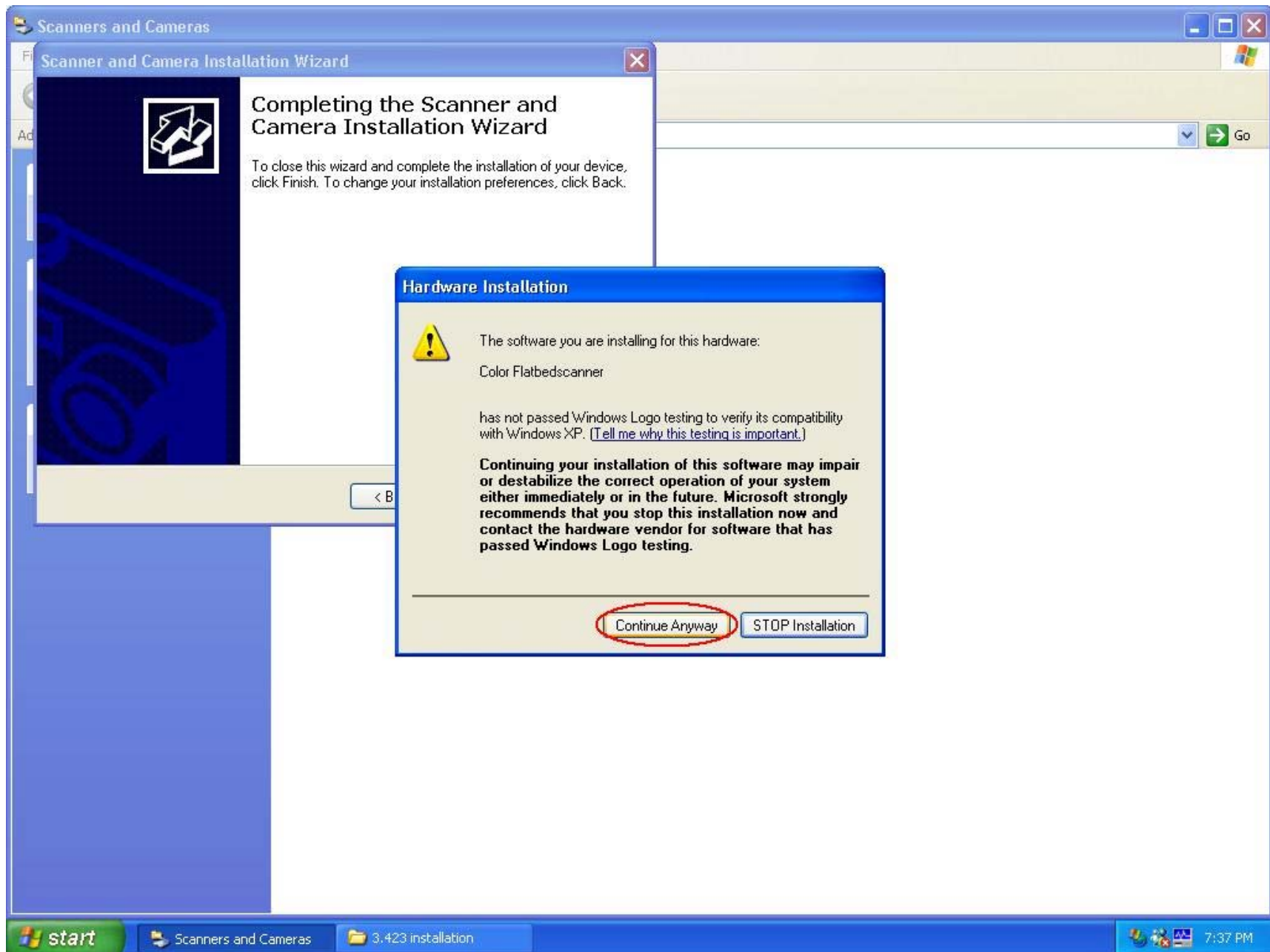
3. Then , add an imaging device :

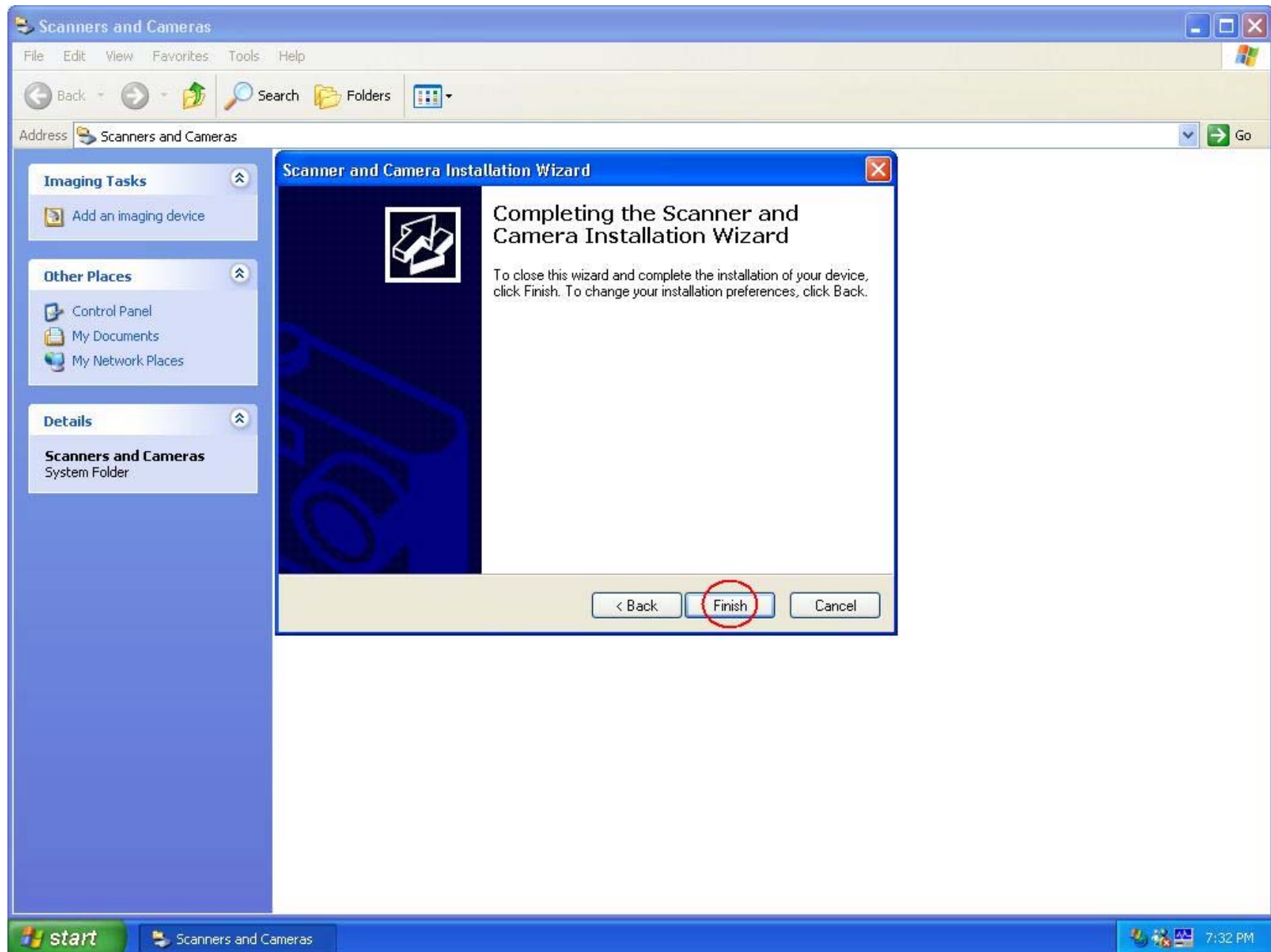


4. Then , step by step :

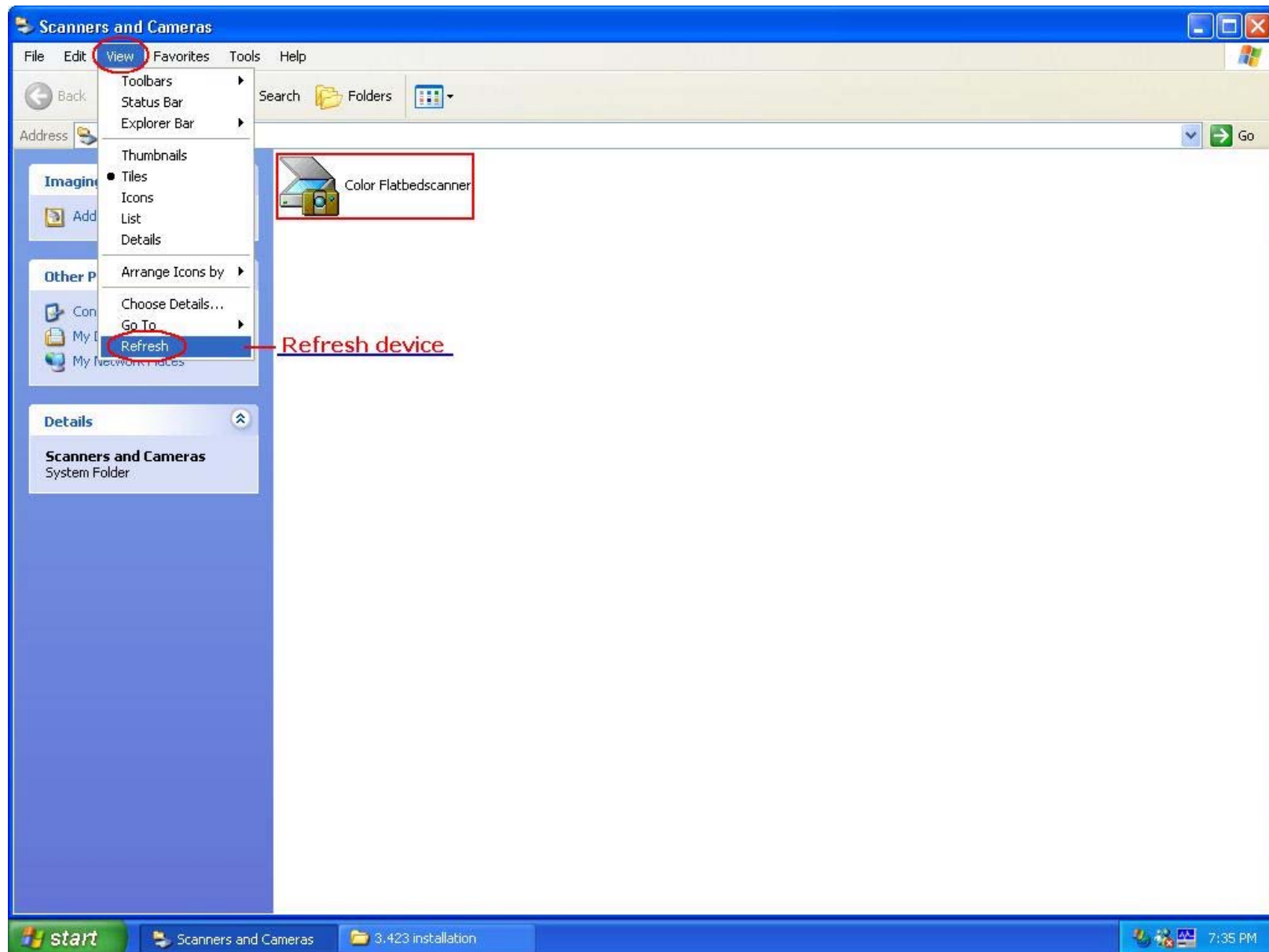




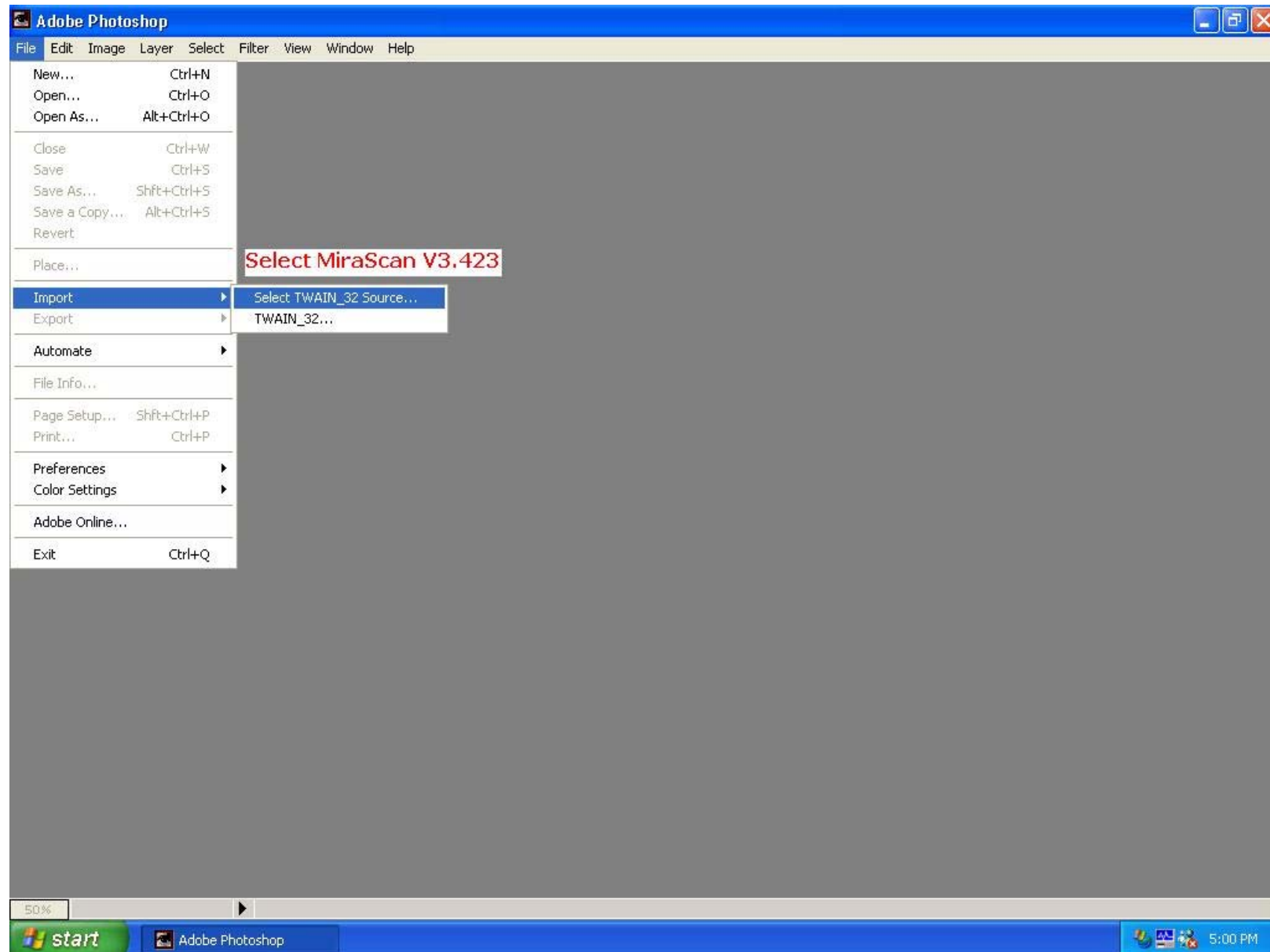




5. After finish add Color Flatbedscanner , please refresh scanner & camera device manager :



6. All is OK ! Please run Photoshop AP to Import Twain_32 source MiraScan V3.423 :



7. Then Acquire MiraSacn driver :

