

## SETUP PROCEDURE

- 1) Please disconnect your External CD-RW's USB cable from the back of the computer
- 2) Visit the following link where you will find the driver for your external CD-RW  
[http://www.benq.com/drivers/storage\\_drivers.html](http://www.benq.com/drivers/storage_drivers.html)


Benq Inc. - Drivers - Microsoft Internet Explorer

File Edit View Favorites Tools Help

Back Forward Stop Home Search Favorites Media

Address [http://www.benq.com/drivers/storage\\_drivers.html](http://www.benq.com/drivers/storage_drivers.html) Go Links

### CD-RW External Drivers



- Installation Instructions
- Manuals - English / French / Spanish
- PCMCIA Driver
- PassiCD v2.0.753 Upgrade

Model	Firmware	USB Driver Files
4406	A.xD / A.xY / A.xZ	Must Uninstall Old Version
6406EU	E.xC / E.xZ	Uninstall File
6424MU	C.xN	Install File / Help - XP
8824	J.xP	

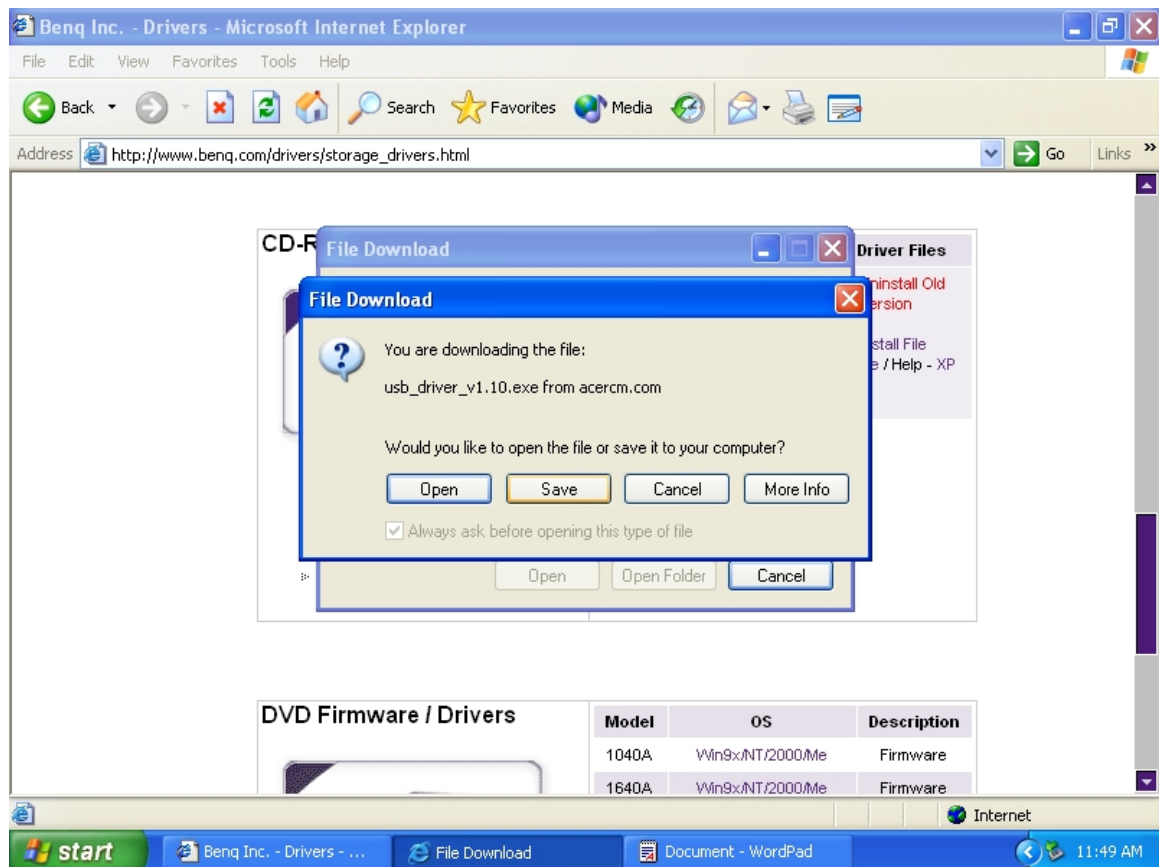
### DVD Firmware / Drivers

Model	OS	Description
1040A	Win9x/NT/2000/Me	Firmware
1640A	Win9x/NT/2000/Me	Firmware

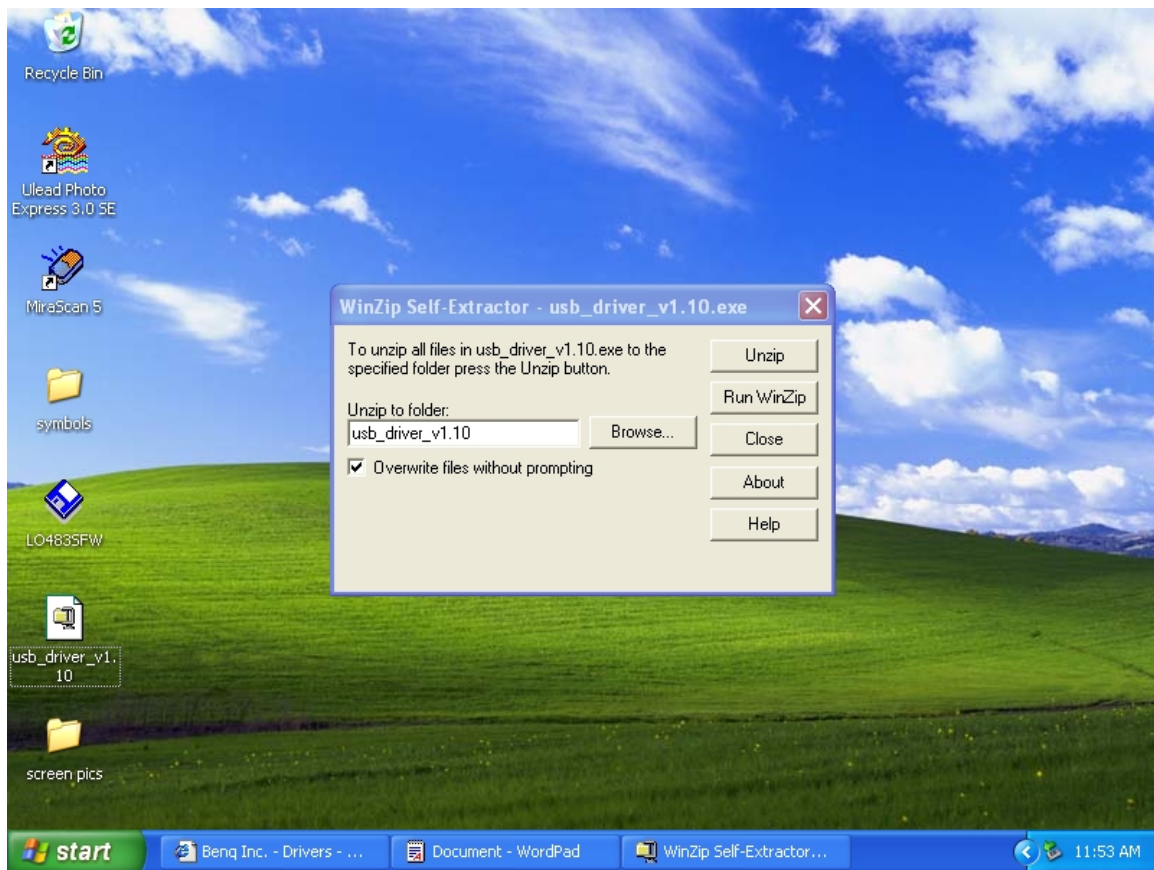
[http://www.benq.com/ss\\_download/drivers/storage/external\\_cdrw/firmware/4406eu/aez.exe](http://www.benq.com/ss_download/drivers/storage/external_cdrw/firmware/4406eu/aez.exe) Internet

start Benq Inc. - Drivers - ... 11:48 AM

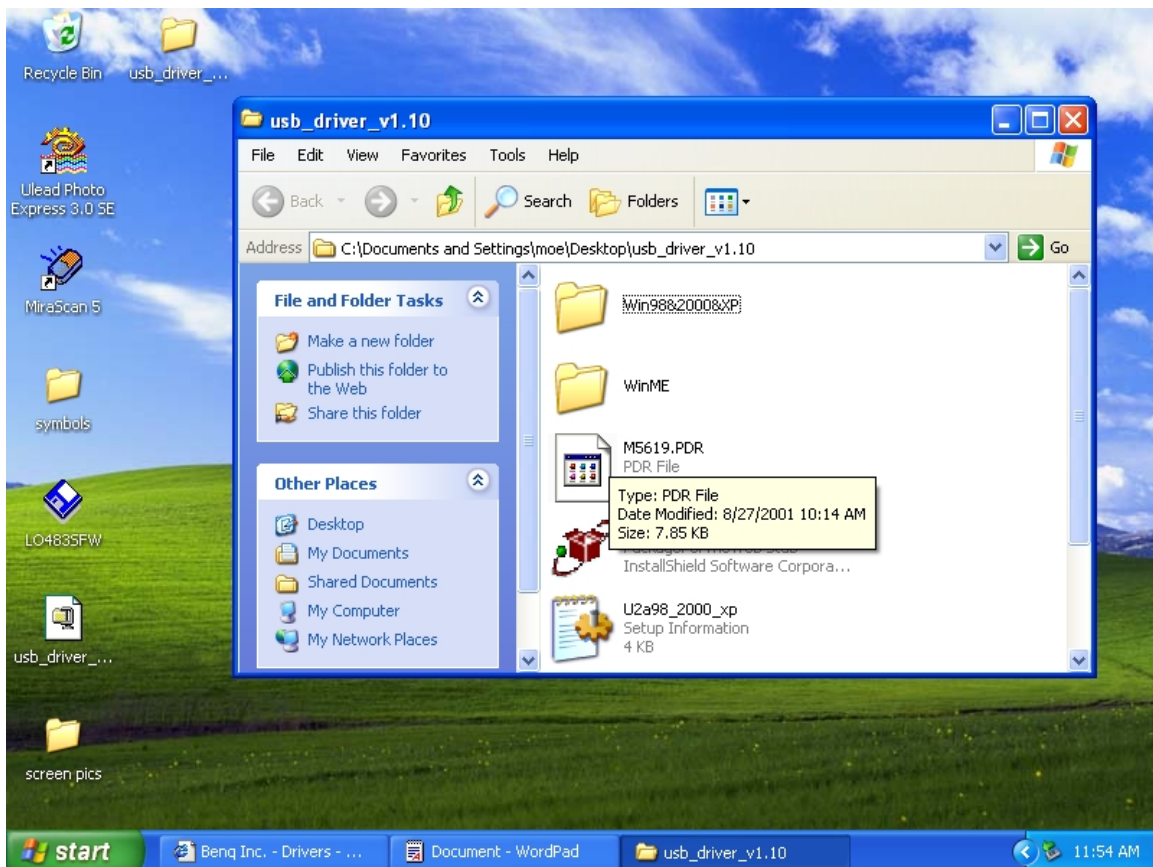
3) Select the appropriate driver for your model CD-RW. When it asks you to save the file, you want to choose “save to disk” and save the file on your desktop. It will then start to download.



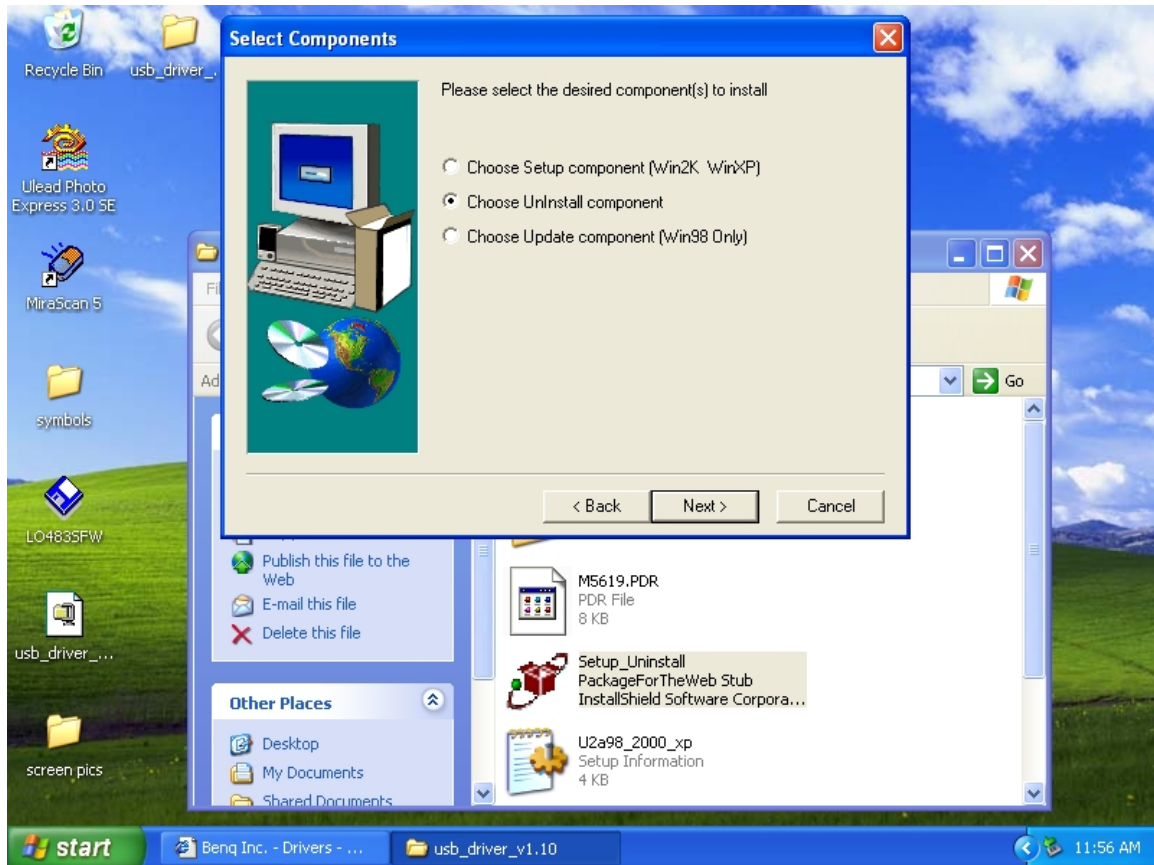
4) Next, you want to locate the downloaded driver file on the desktop. Once located, double click on it and it will ask you if you want to unzip the file. Click on the button that says “Unzip.”



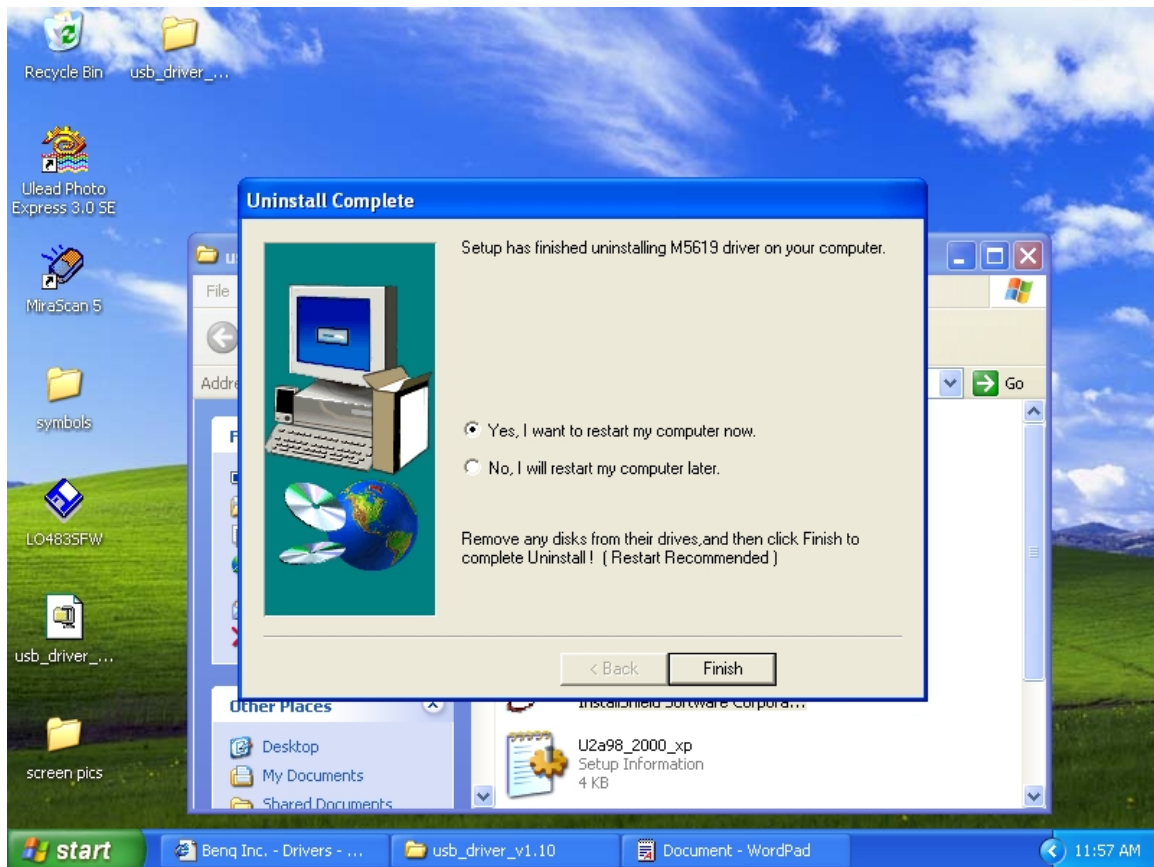
5) After the unzipping of the file is complete, it will put a manila folder on your desktop. Locate that manila folder and Double click on it. Look for the setup uninstall\install icon and click on it.



6) When you are at the Select Components page, please select “Choose Uninstall Component” first to remove the previously installed driver.

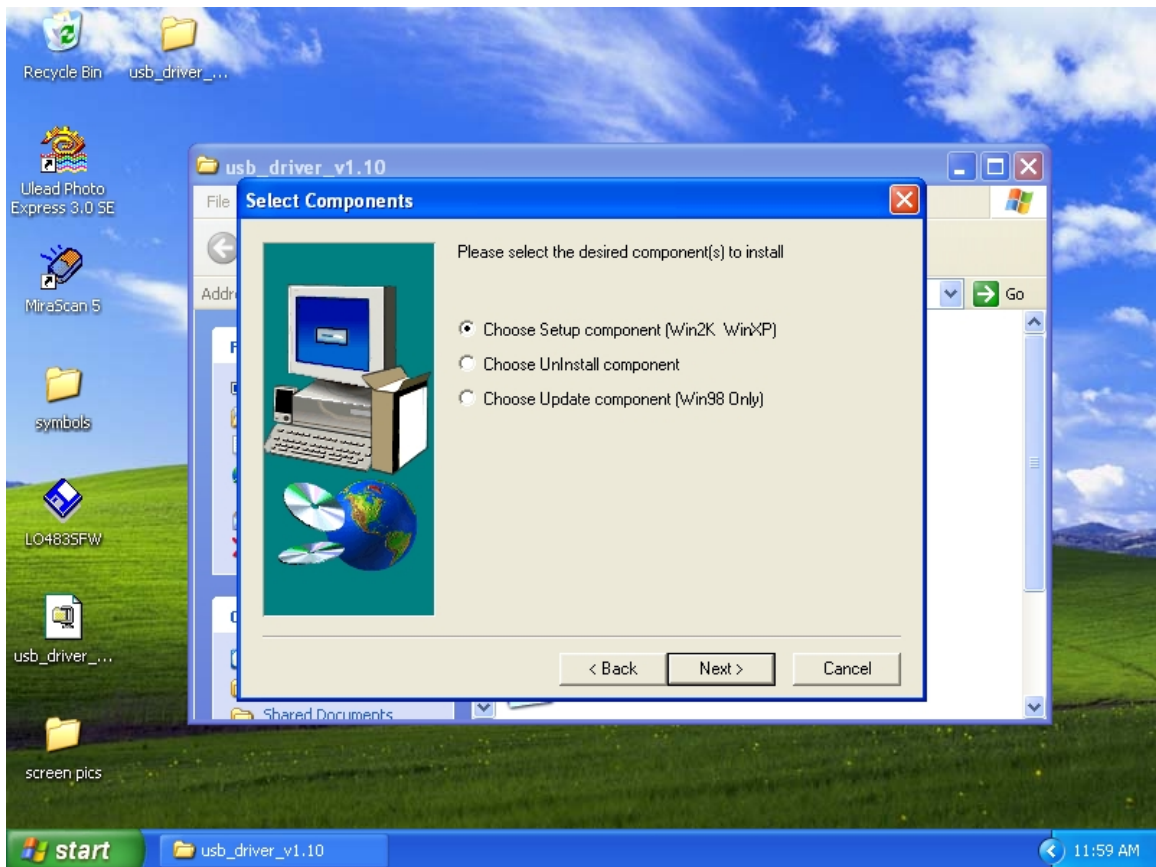


7) After the uninstallation is complete, it will ask you to restart your computer. You must restart your computer for it to complete the removal.

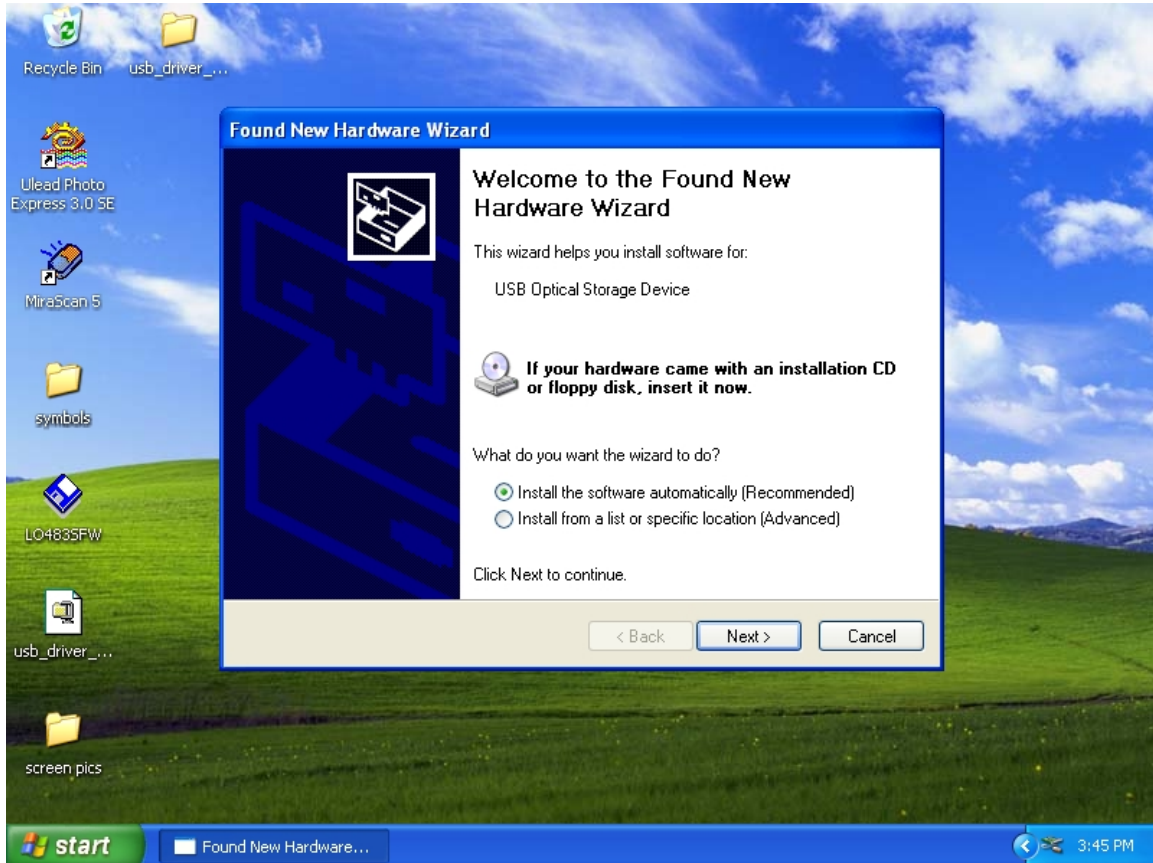




- 8) Once the computer has brought itself back up, you are going to want to locate the manila folder again, locate the setup uninstall\install icon again. Click on it and this time when you are at the Select Components page, you will select the option for “Setup Component Win2k WinXP.” (For Win98\Me, Choose Update Component Win98).
- 9) After the installation has completed, shutdown the computer, reconnect the USB cable for the External CD-RW driver and then restart the system.

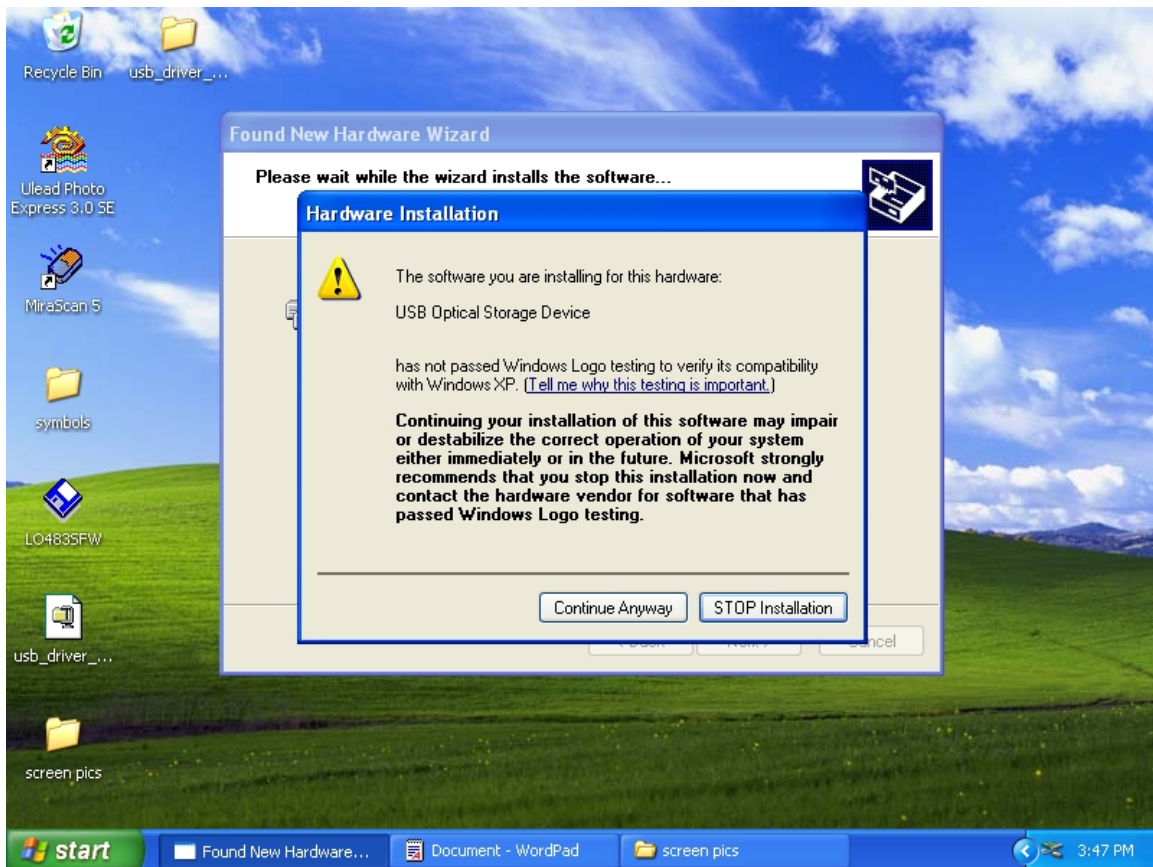


10) Once the computer has booted back up onto your desktop, your Add New Hardware Wizard will appear. Make sure it is set to the “install software automatically” and click next.





11) During the setup process, this window may appear. Just click “Continue Anyway” to allow the installation to continue.



12) After the computer has finished installing the software for the External CD-RW drive, the following window will appear. Just click finish and the setup is complete.

