

BENQ Camera Windows XP Installation Guide

- Driver version : DC300mini V1.03
- Camera model : Digital Camera 300 mini
- OS : Windows XP
- Download website : <http://www.benq.com.tw/global/service/dsc/drivers.htm>

Notice 1 : These drivers are expressed to *.zip file. Click [here](#) to know how to install.

Notice 2 : Please un-connect DC300mini with PC when you install the driver .

Notice 3 : If you still got Error Messages after these installation steps , please E-mail to us your problems .

E-mail to :

Asia Pacific area and Taiwan : APFService@benq.com

America : support-sc@benq.com

Europe : support@benq-eu.com

China : service@benq.com.cn

Other Sites : IMGservice@benq.com

Please specify :

1.OS version (WinXP)

2.Driver version (DC300mini vX.XX)

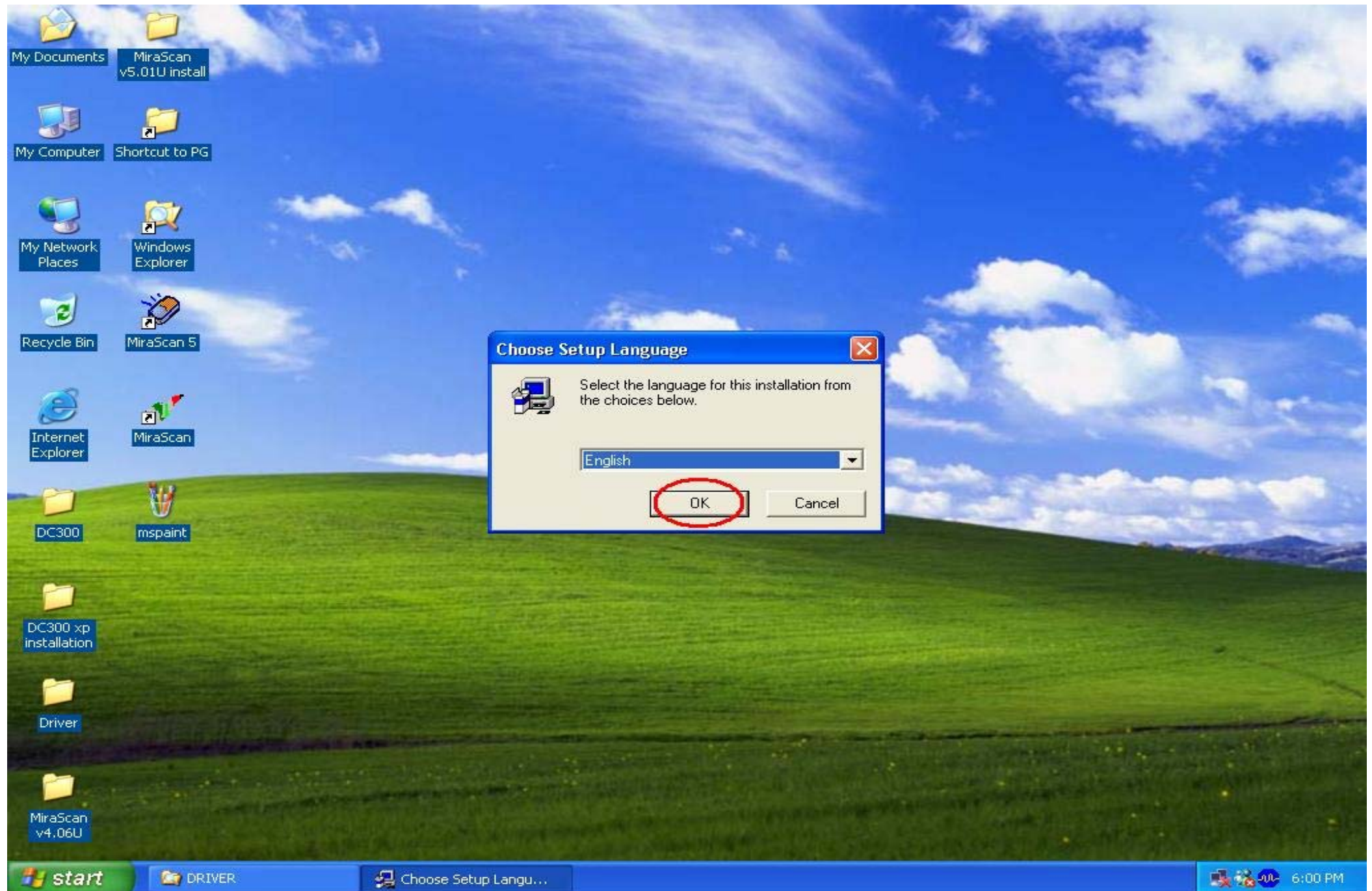
3.Model Name. & Serial No.

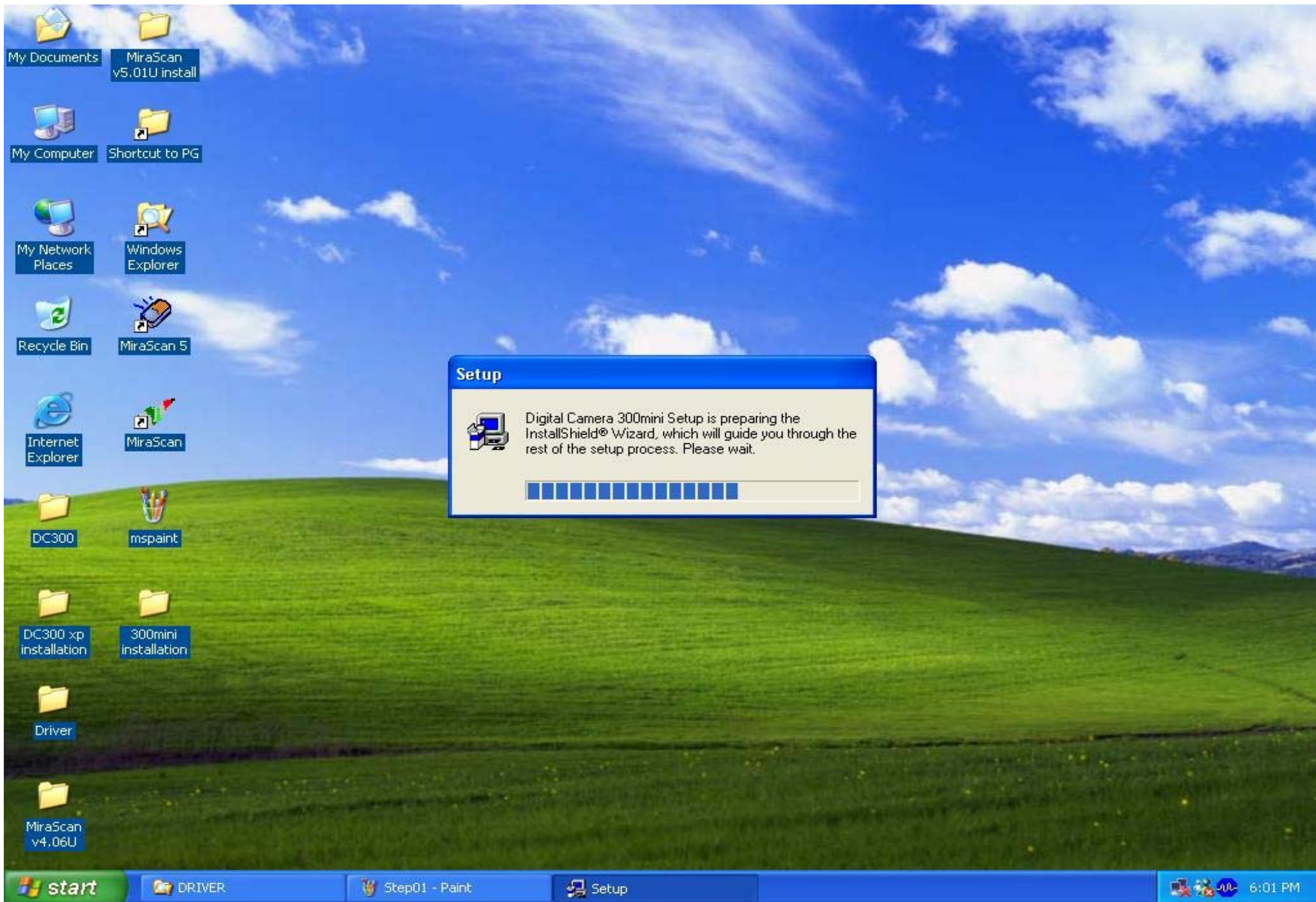
4.Platform spec. (Motherboard model , Platform model , Ram size , CPU spec...)

5.Application problem (Which steps / what situation will happen...) & Software version

6.Your local Country (Address)

Installation Step 01: Unzip DC300mini driver , select Setup.exe , choose your language to install , click OK .

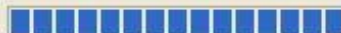




Setup



Digital Camera 300mini Setup is preparing the InstallShield® Wizard, which will guide you through the rest of the setup process. Please wait.



start

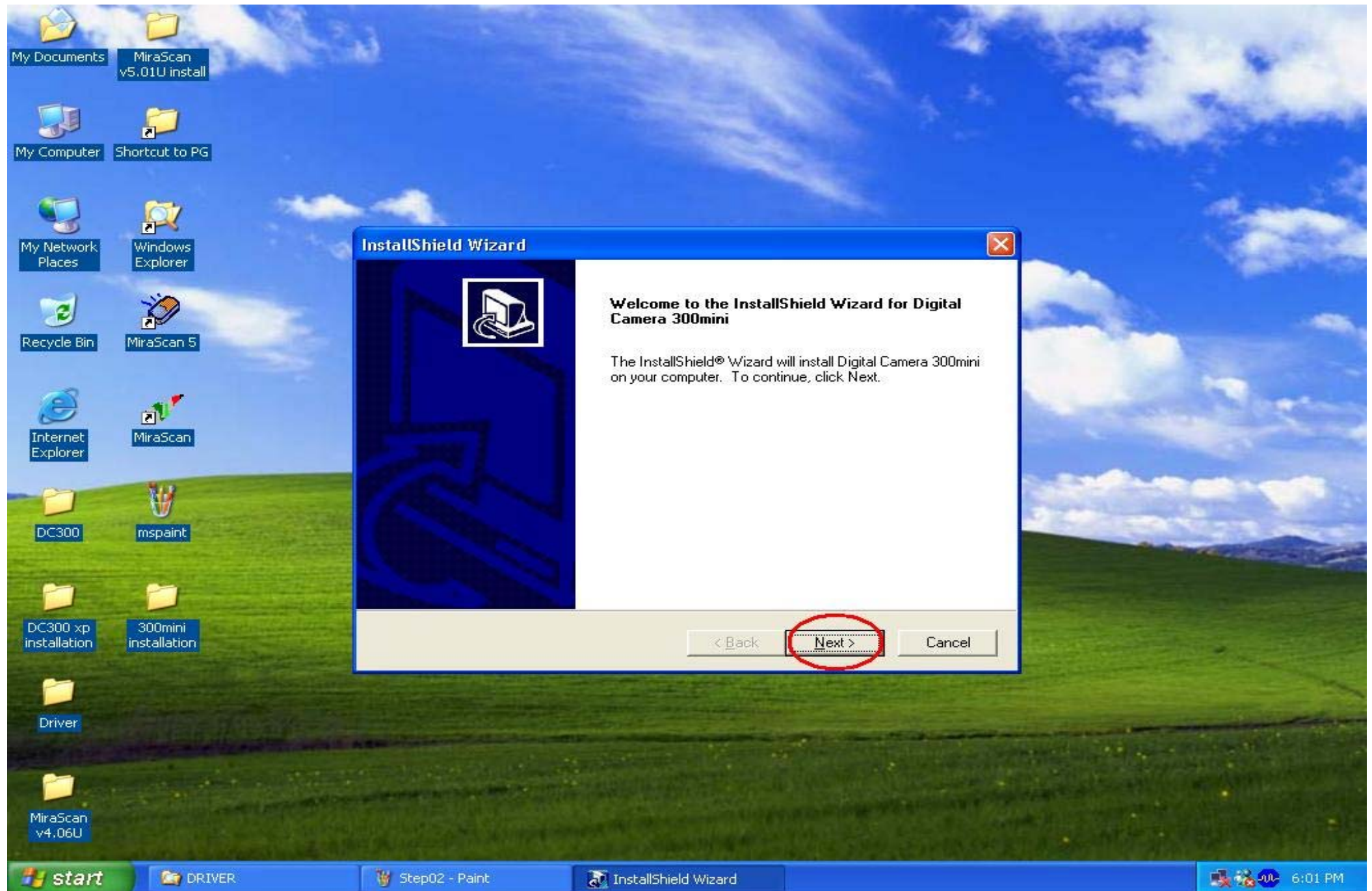
DRIVER

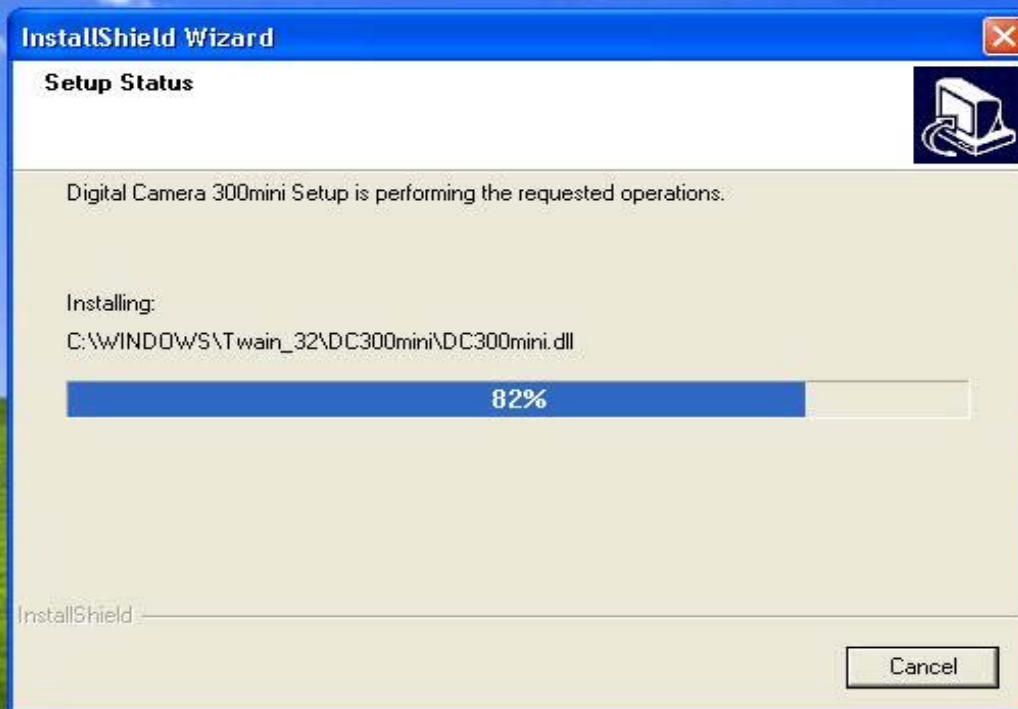
Step01 - Paint

Setup

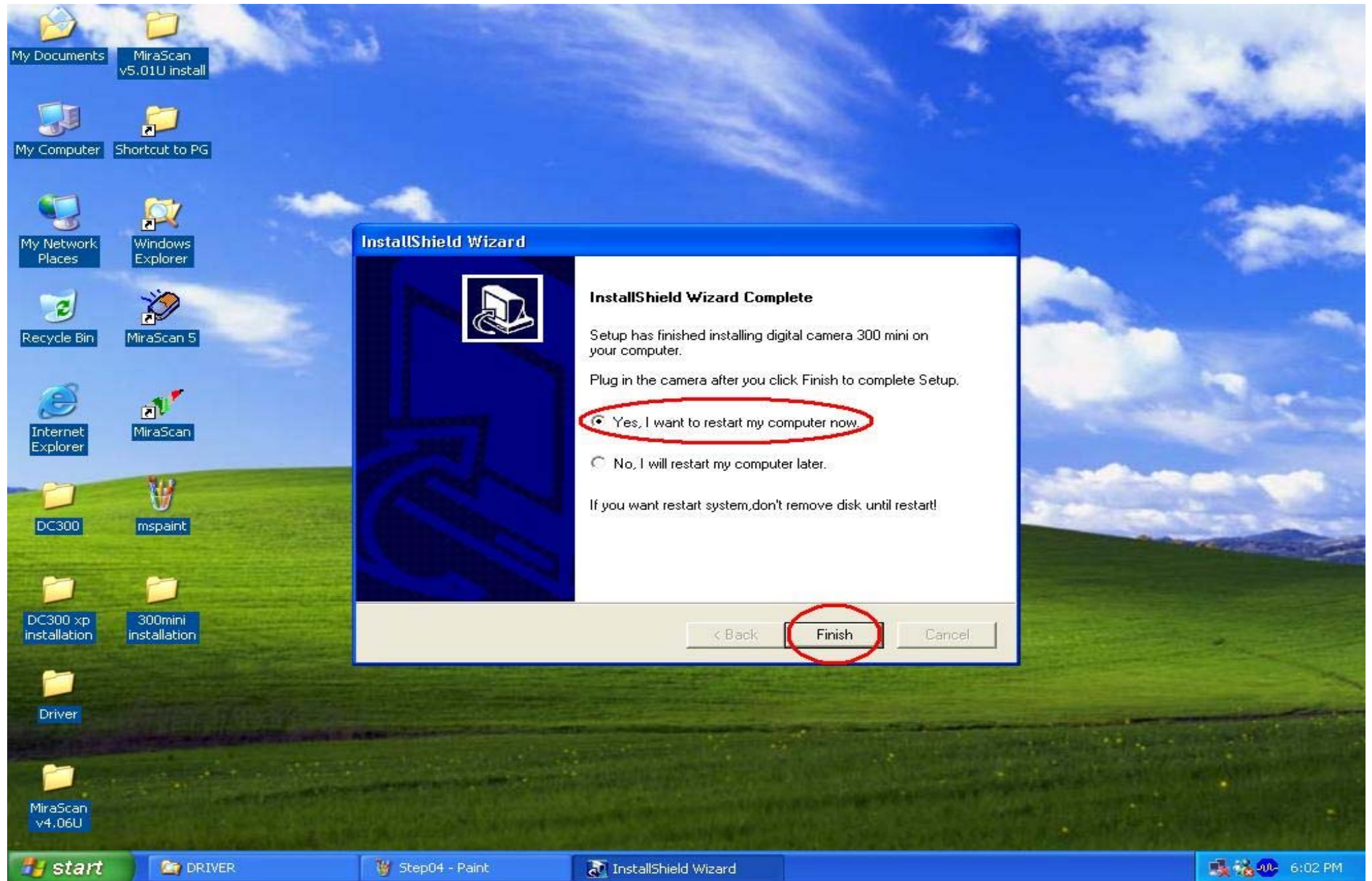
6:01 PM

Installation Step 02: Then click Next .

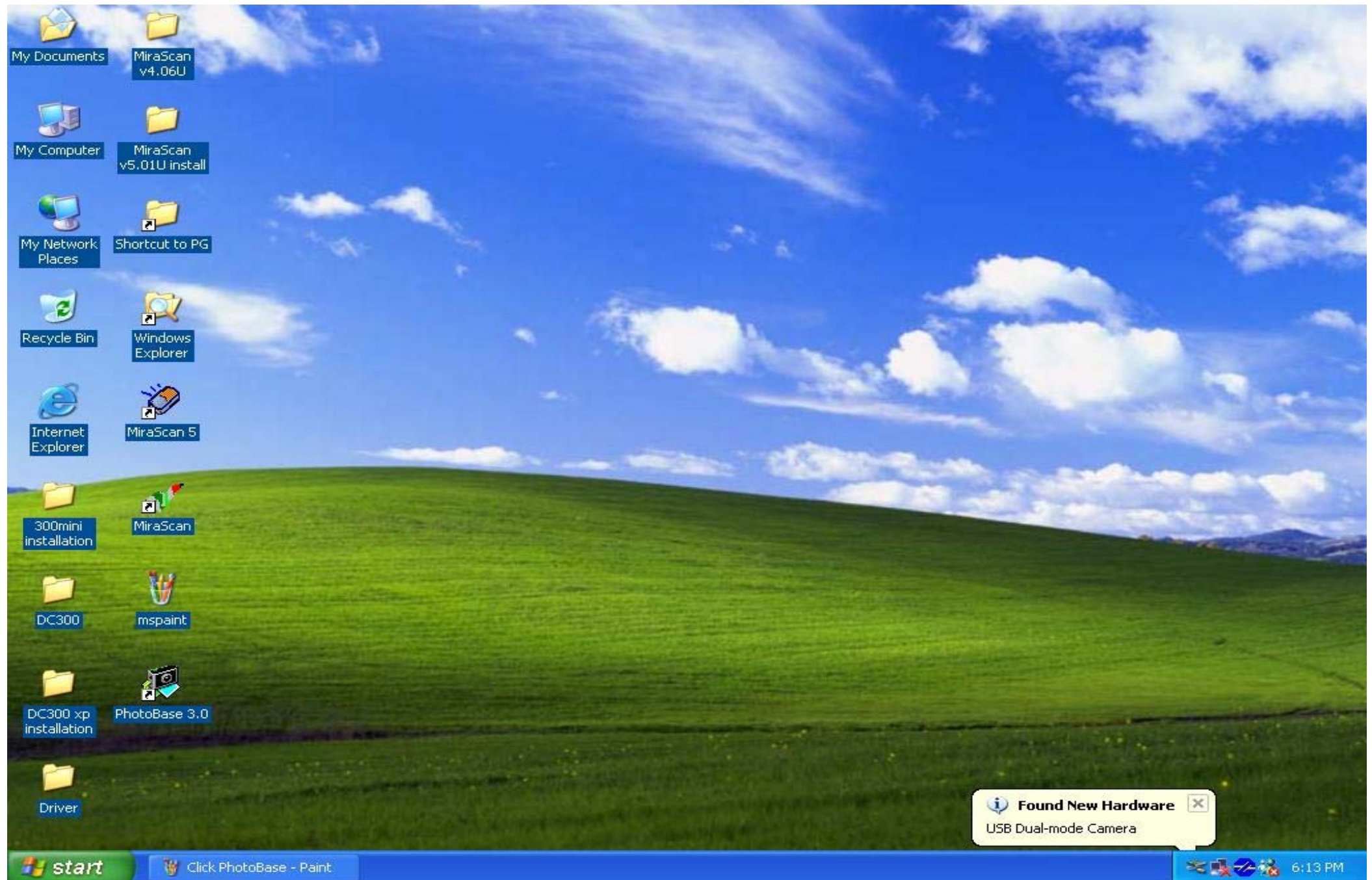


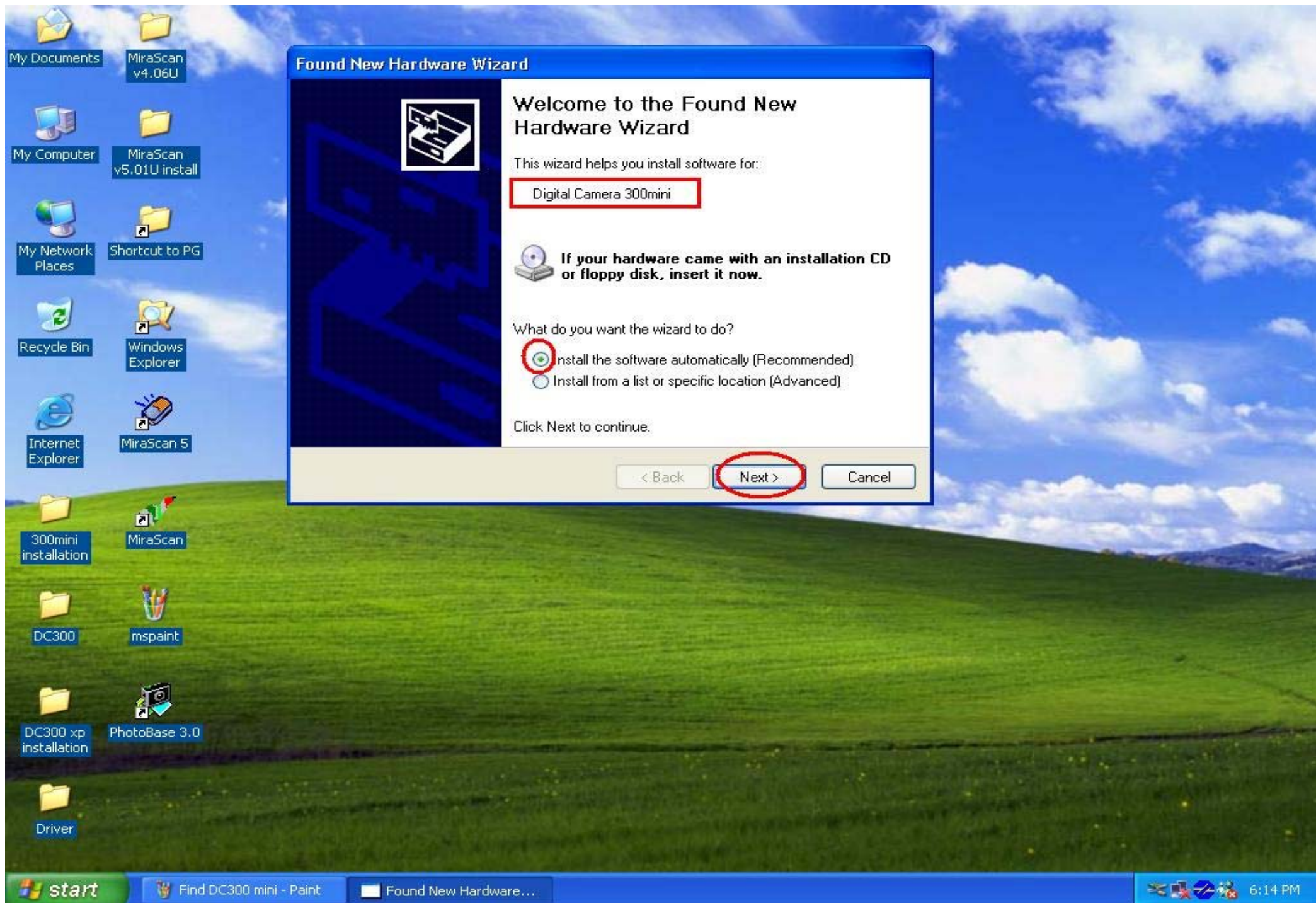


Installation Step 03: Installation Completed , click Finish , system will reboot your PC automatically .

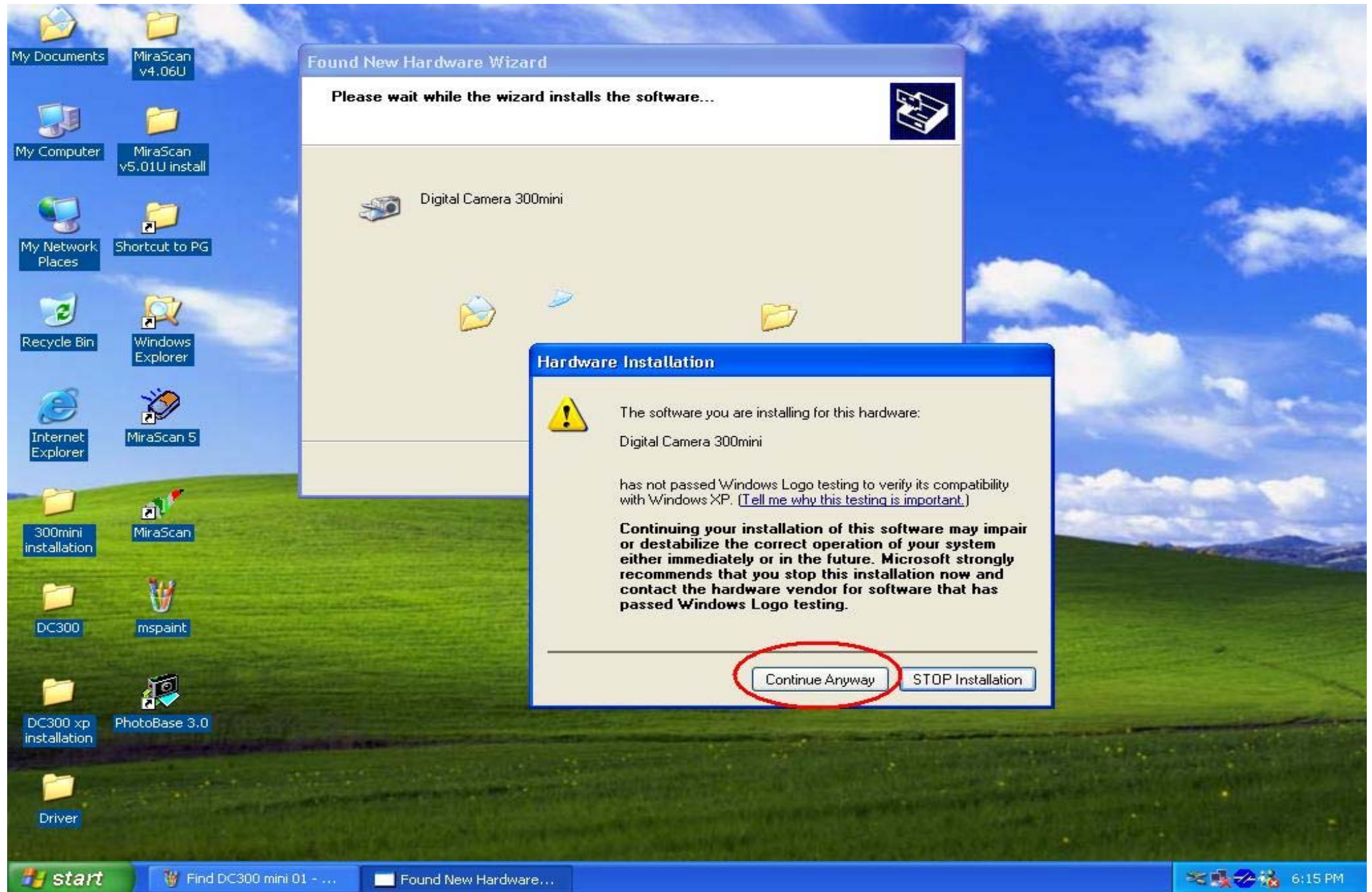


Installation Step 04 : After login on Winxp , please connect with DC300mini & PC , system will detect found new hardware .

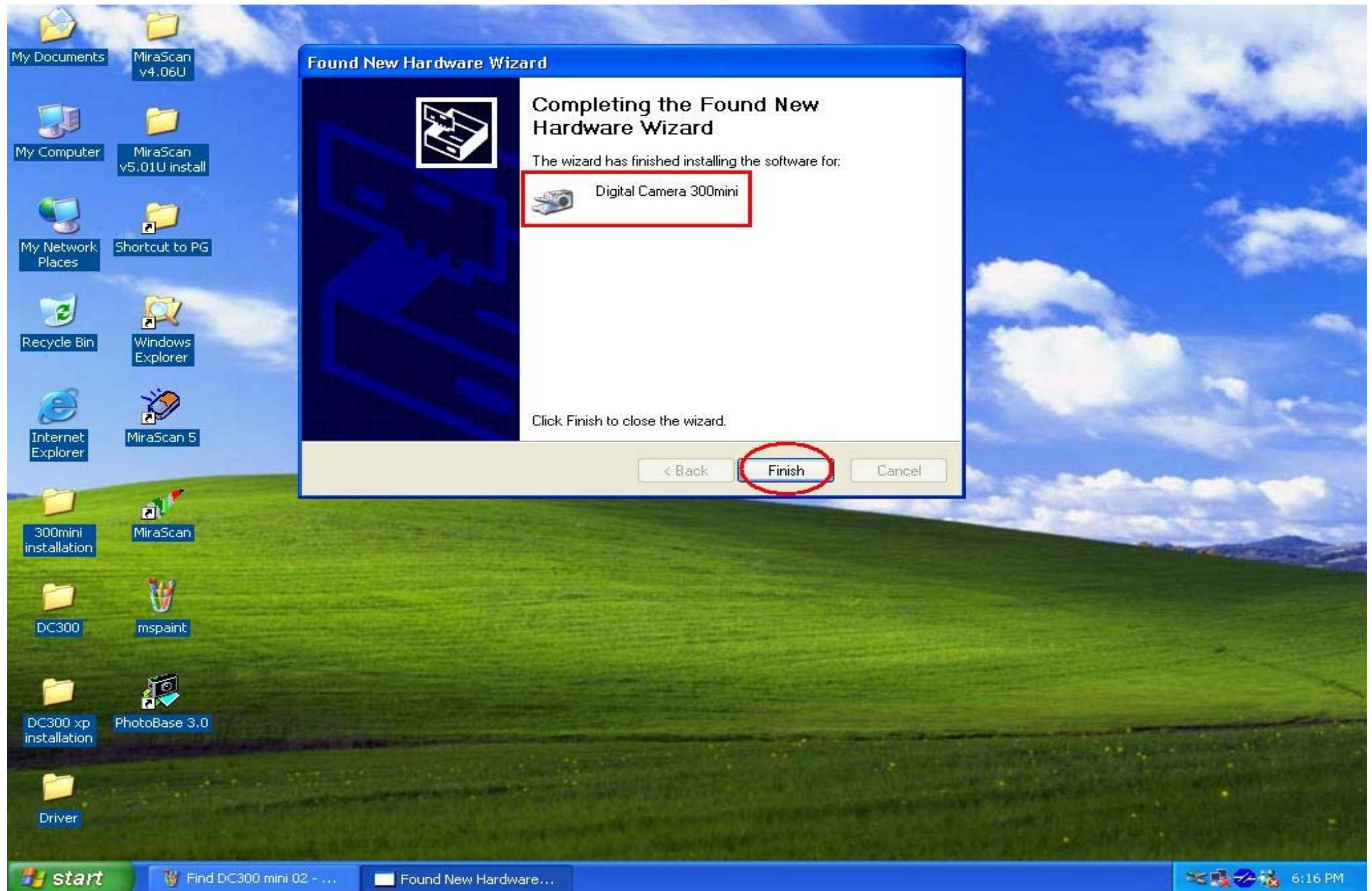




Installation Step 05: System will show Notice message , it's safe to click Continue Anyway to install .

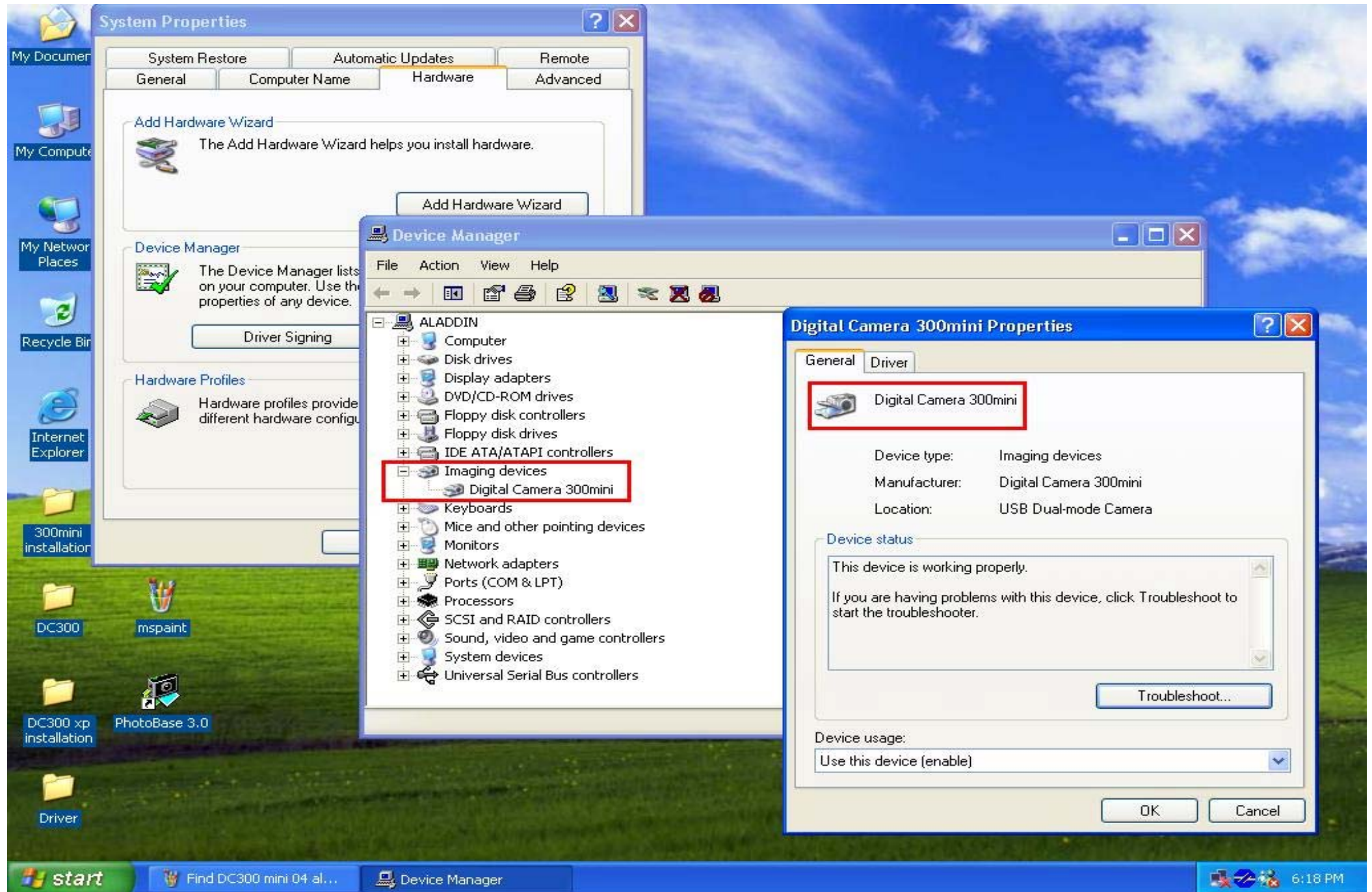


Installation Step 06: Finish the work .

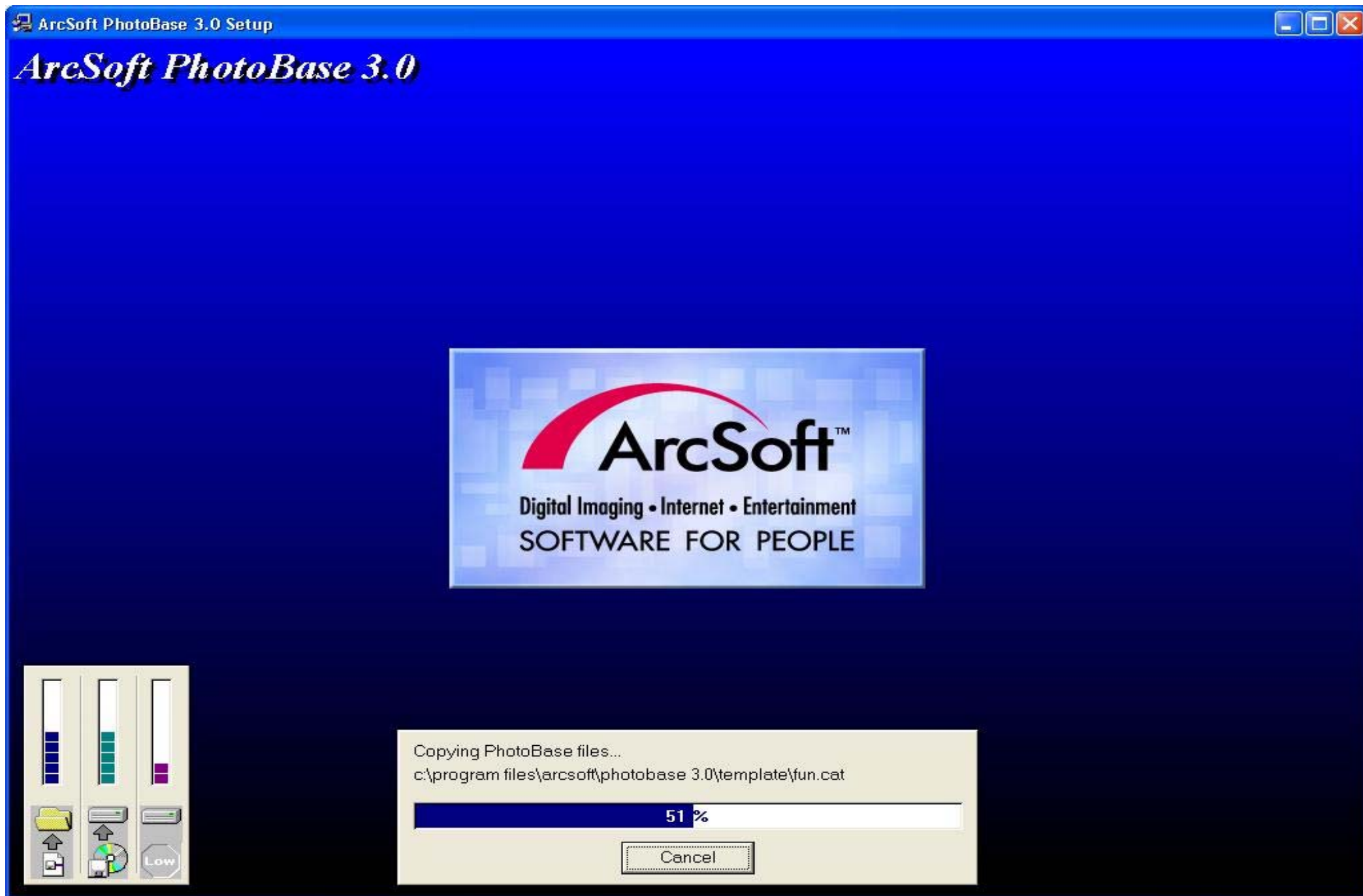




Installation Step 07: You could check DC300mini from Device Manager .



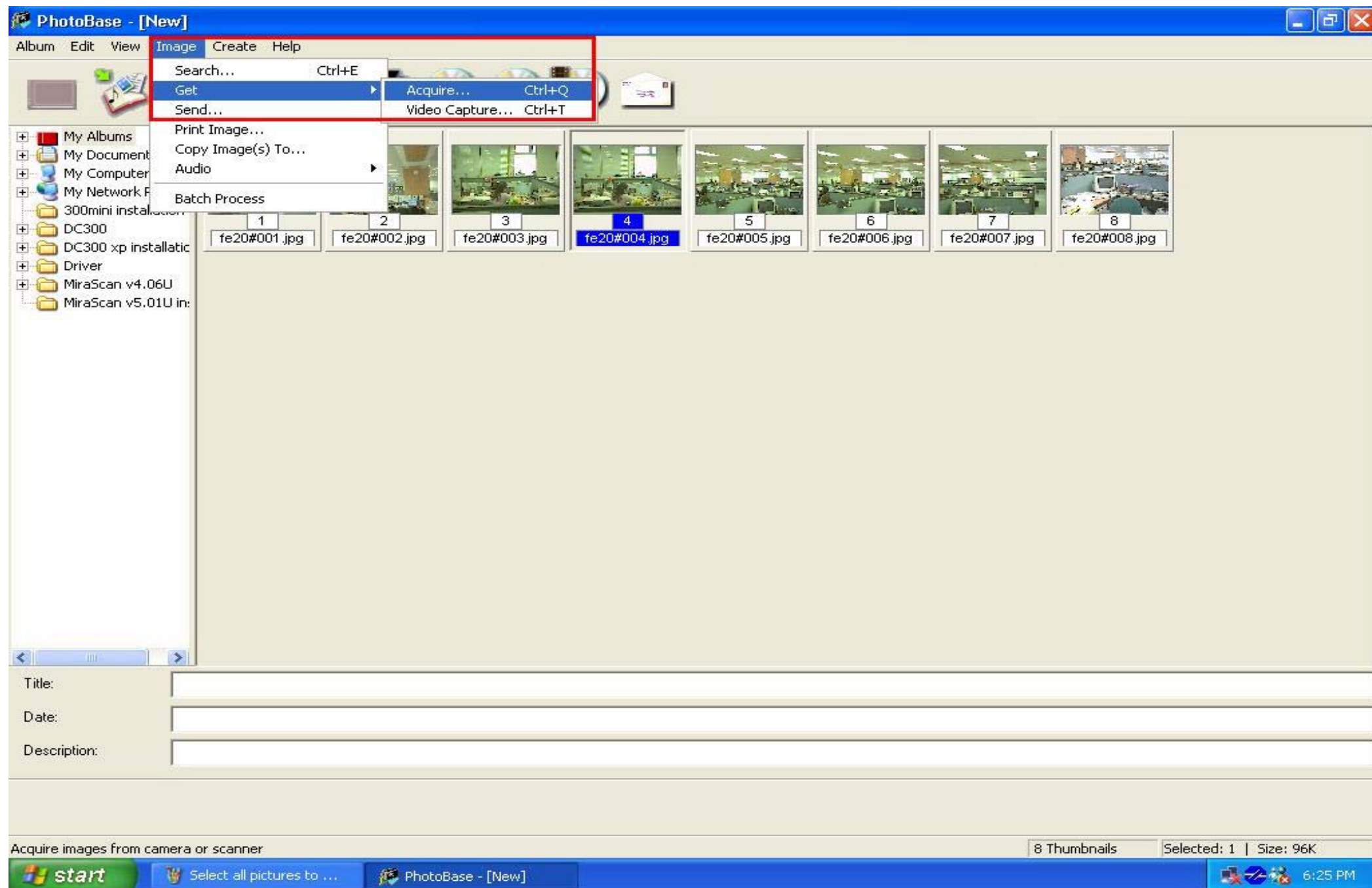
Installation Step 08: OK , please setup Arcsoft PhotoBase 3.0 step by step (DC300mini CD bundled) .



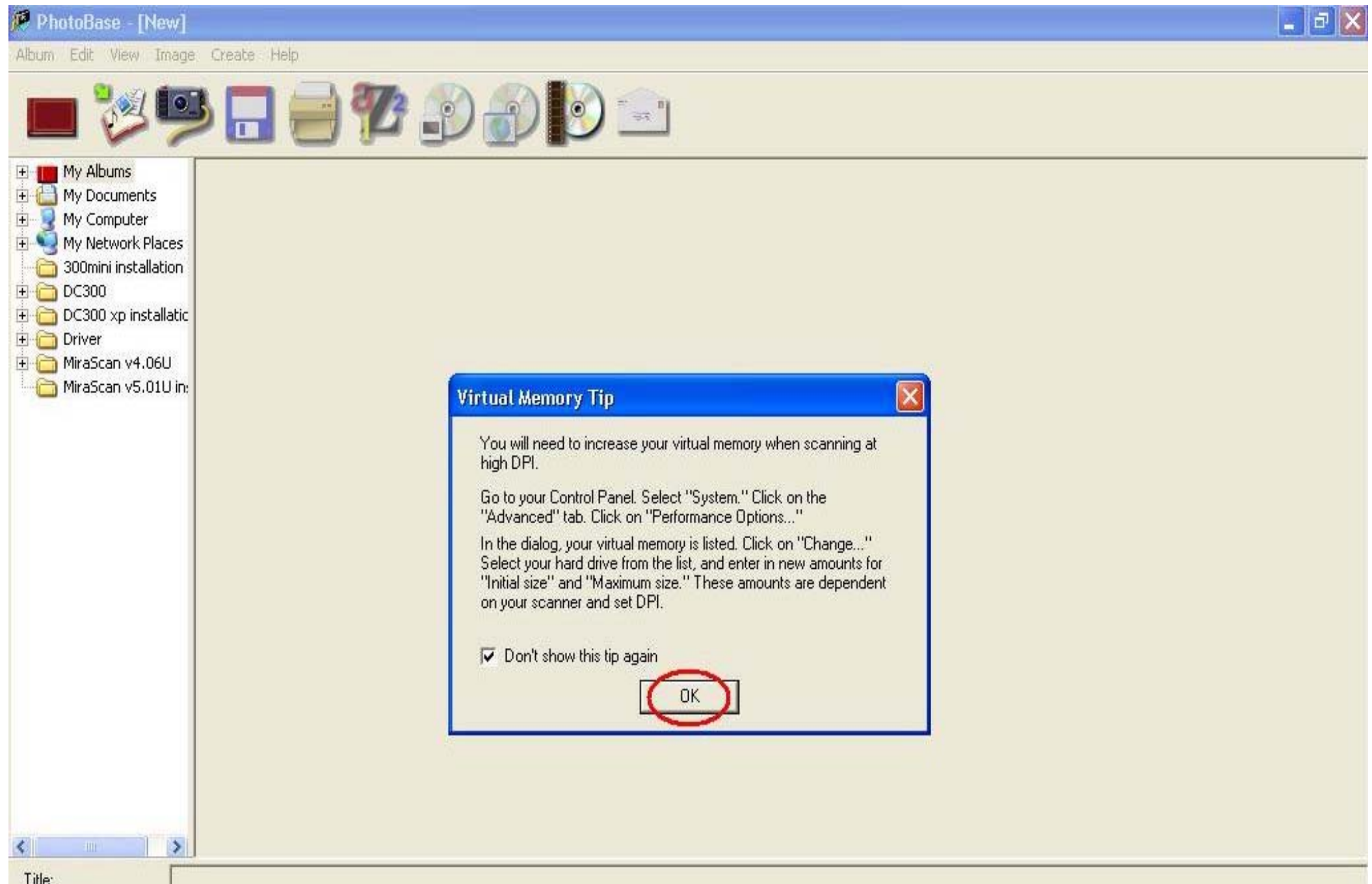
Installation Step 09: After installation , please click PhotoBase 3.0 .



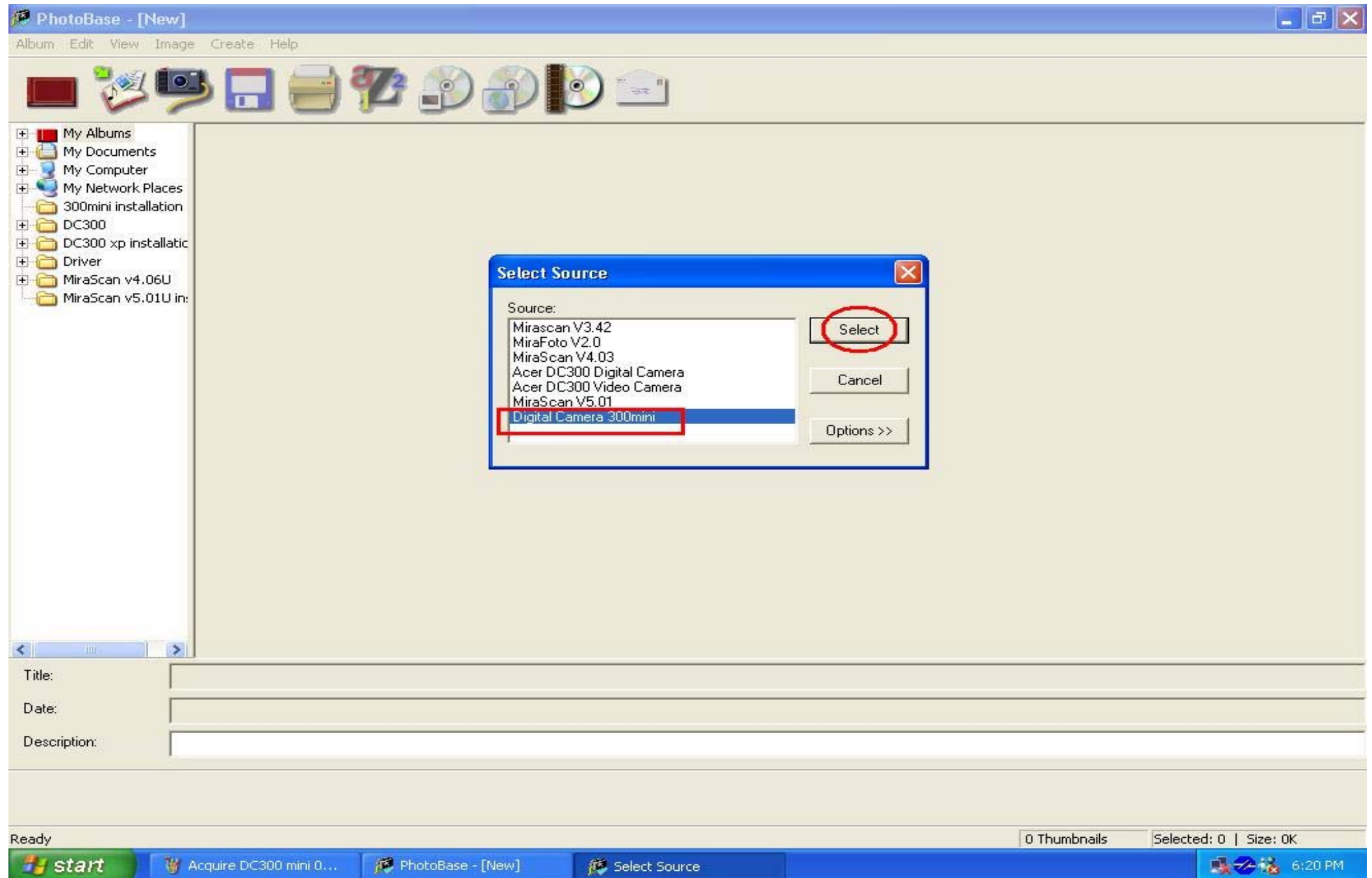
Installation Step 10: Please Acquire DC300mini from below path .



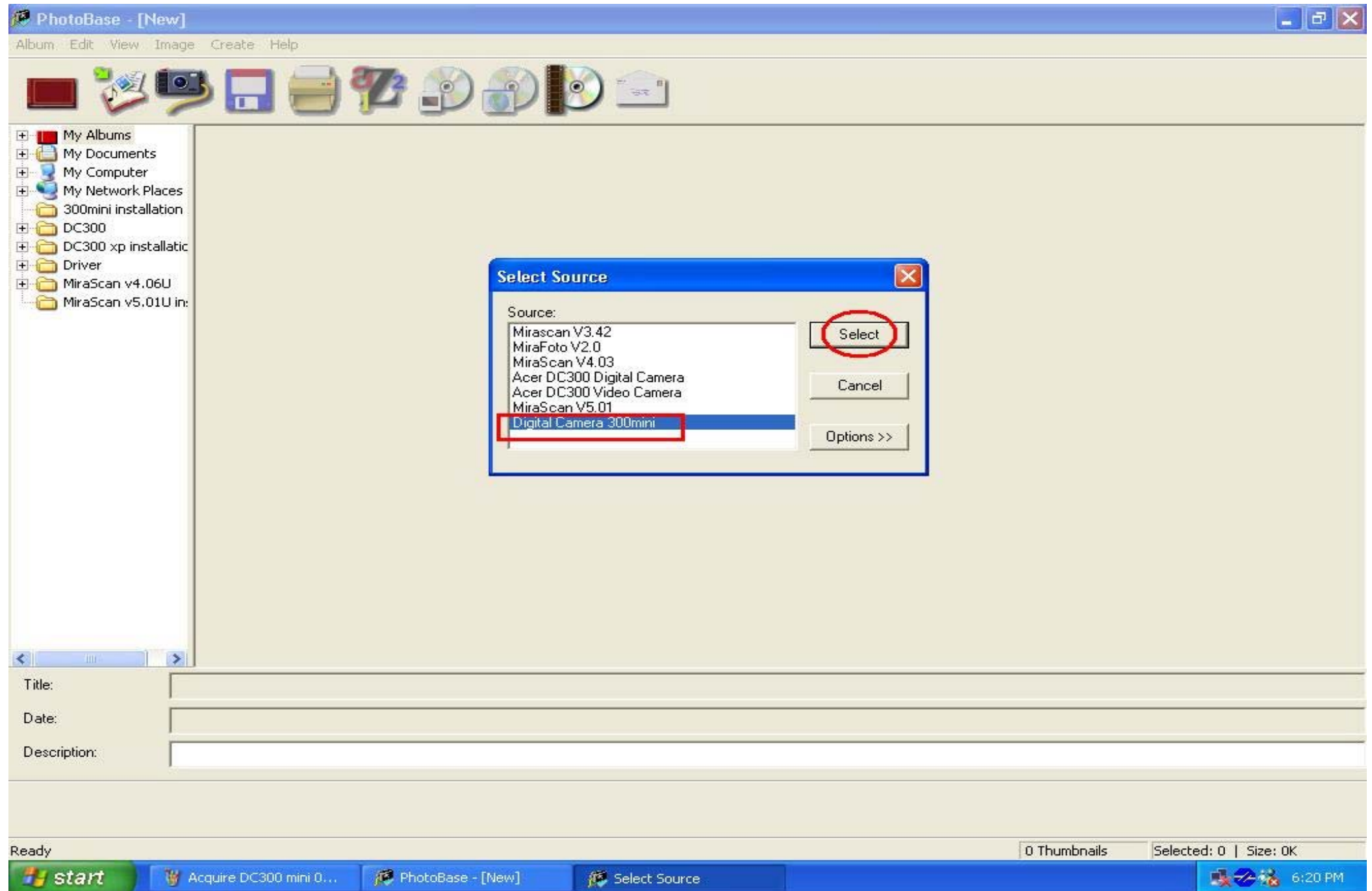
Installation Step 11: System will show Virtual Memory Tip , you could just click Next .



Installation Step 12: Please select Source DC300mini .



Installation Step 13: System will show Virtual Memory Tip , you could just click Next .



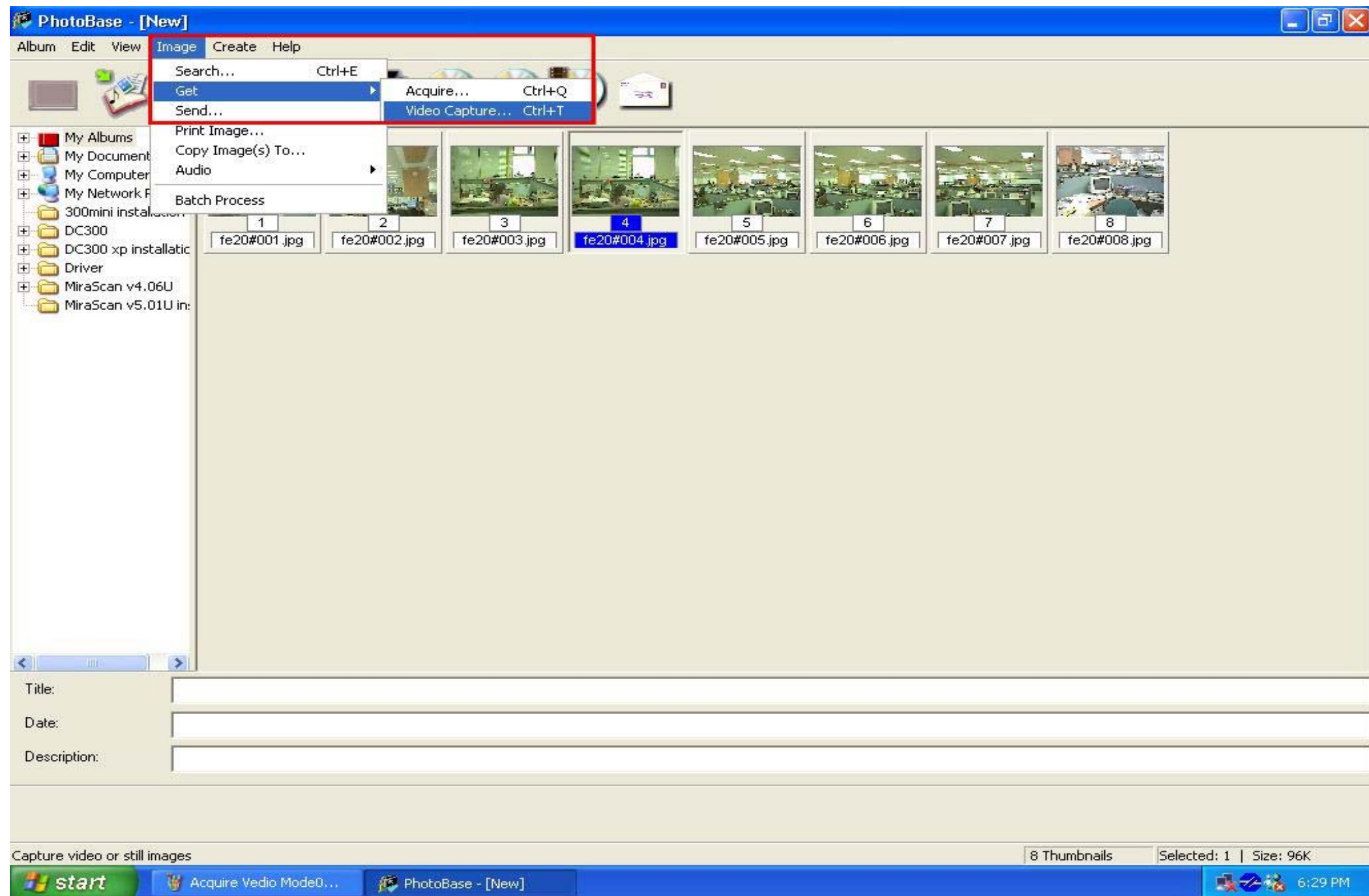
Installation Step 14: DC300mini UI will pop-up on the window , you could select all pictures .



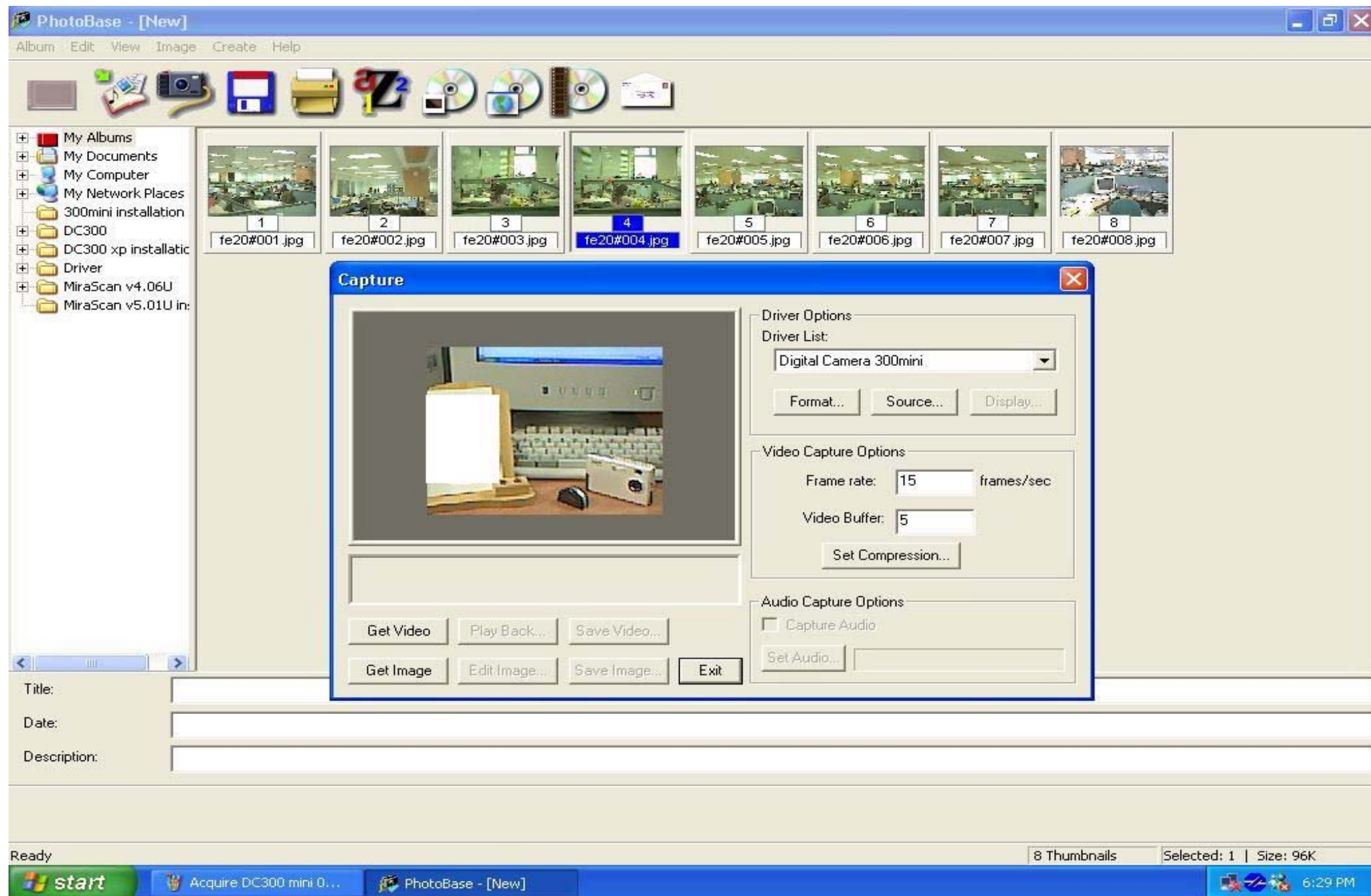
Installation Step 15: Then these photos will transferring to PhotoBase 3.0 automatically , then you could edit them further .



Installation Step 16: How to use Video mode ? Please get it from Video Capture ...



Installation Step 17: Then Capture UI will pop-up on the window automatically .



Installation Step 18: The same steps , if you have new photos , please click download pictures and select them to transferring into PhotoBase 3.0 .

