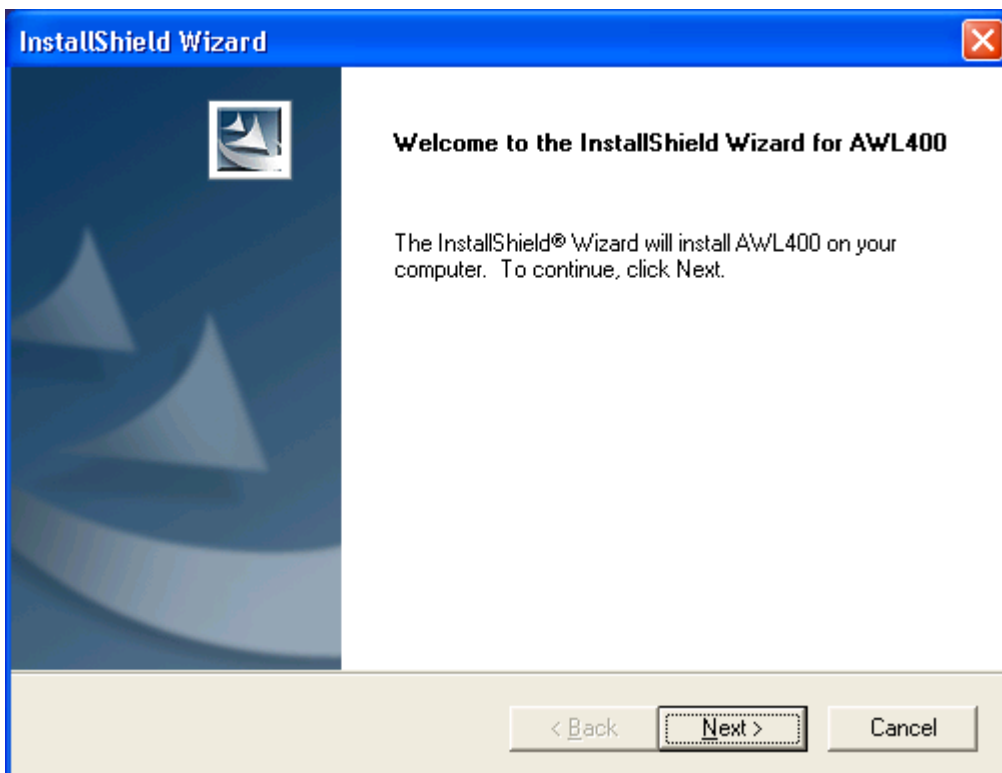


NOTE

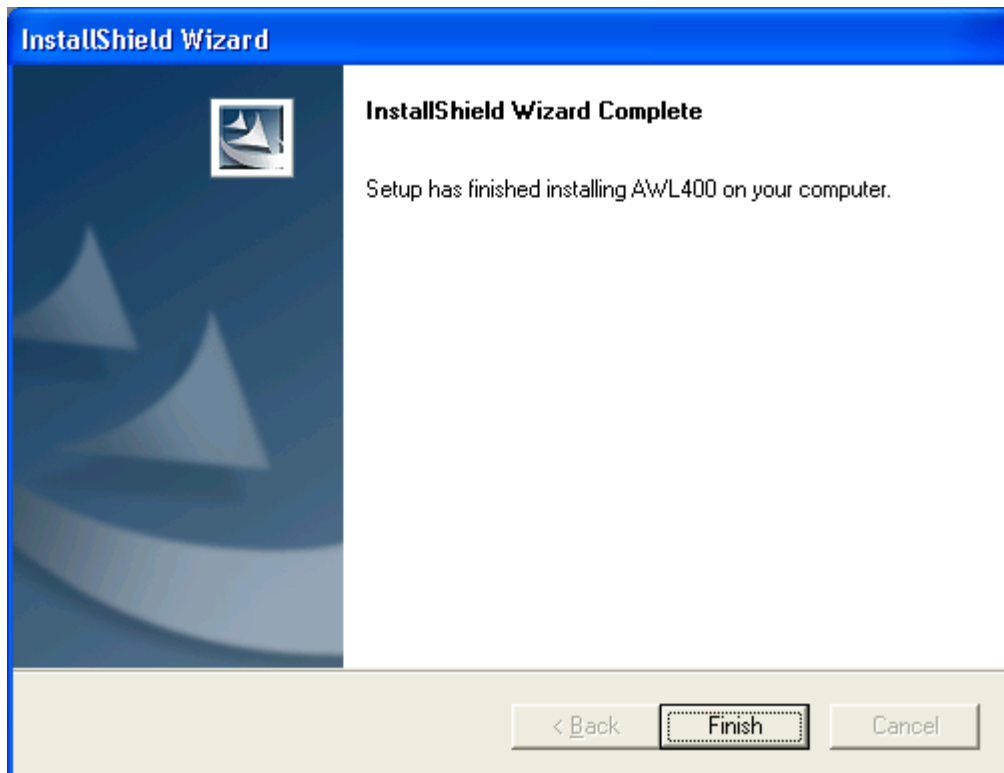
Please visit <http://www.BenQ.com> to download the latest drivers & user manuals.

● Installation for Windows XP

1. Execute Setup.exe in the AWL400 directory in BENQ Wireless LAN CD. For example, if your CD-ROM has a drive D, please execute D:\AWL400\Setup.exe.



2. Press **Next** button



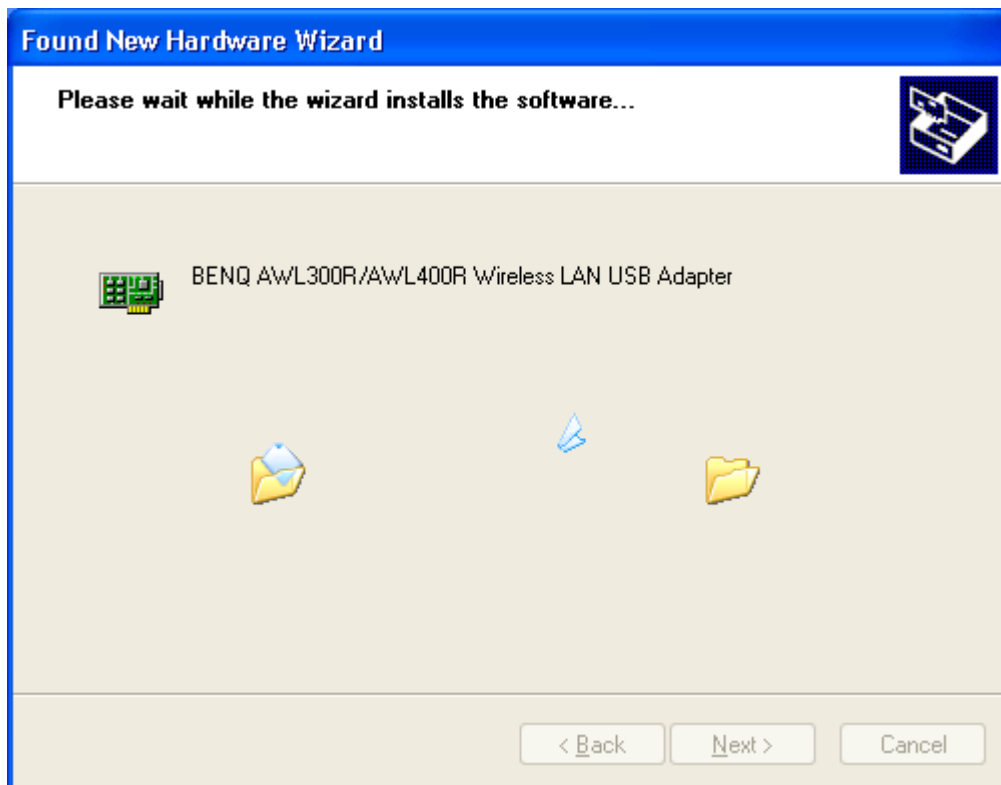
3. Press **Finish**.
4. Insert AWL400 USB Stick into your PC, and then Windows will show the dialog – 'Found New Hardware Wizard'.



5. Select '**Install the software automatically (Recommended)**' and press **Next** button.



Press **Continue Anyway**



Please wait while coping files. This may take a long time.

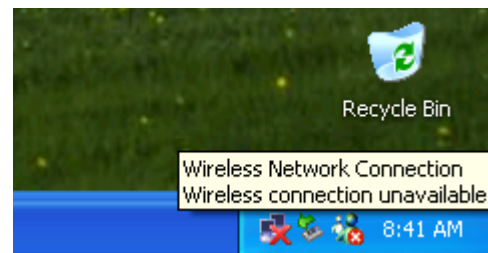
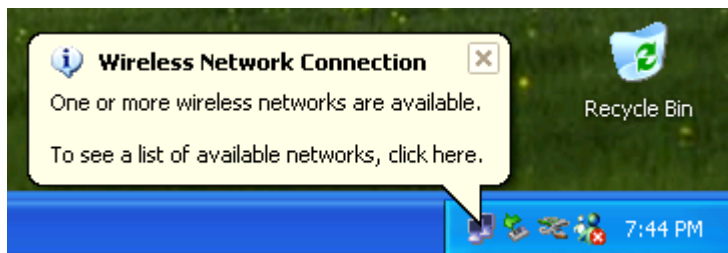


6. Press **Finish** to complete the installation.

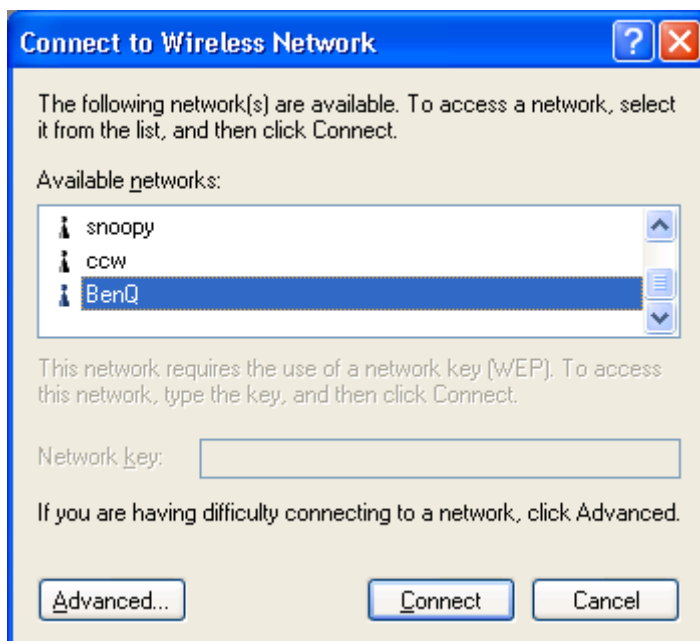
● Configuration Utility for Windows XP

NOTE

Windows XP built-in configuration utility is used to configure the wireless network settings. At the first time, this utility will NOT let the wireless LAN card automatically be associated with any access point until users select their network.

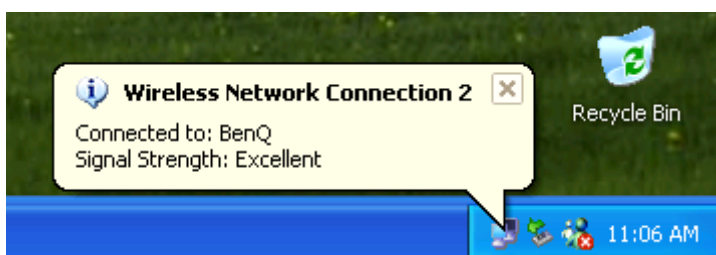


After complete installation, you will get the Wireless Network Connection Icon in the System Tray. Wireless connection unavailable will appear if you don't click the icon for a long time.



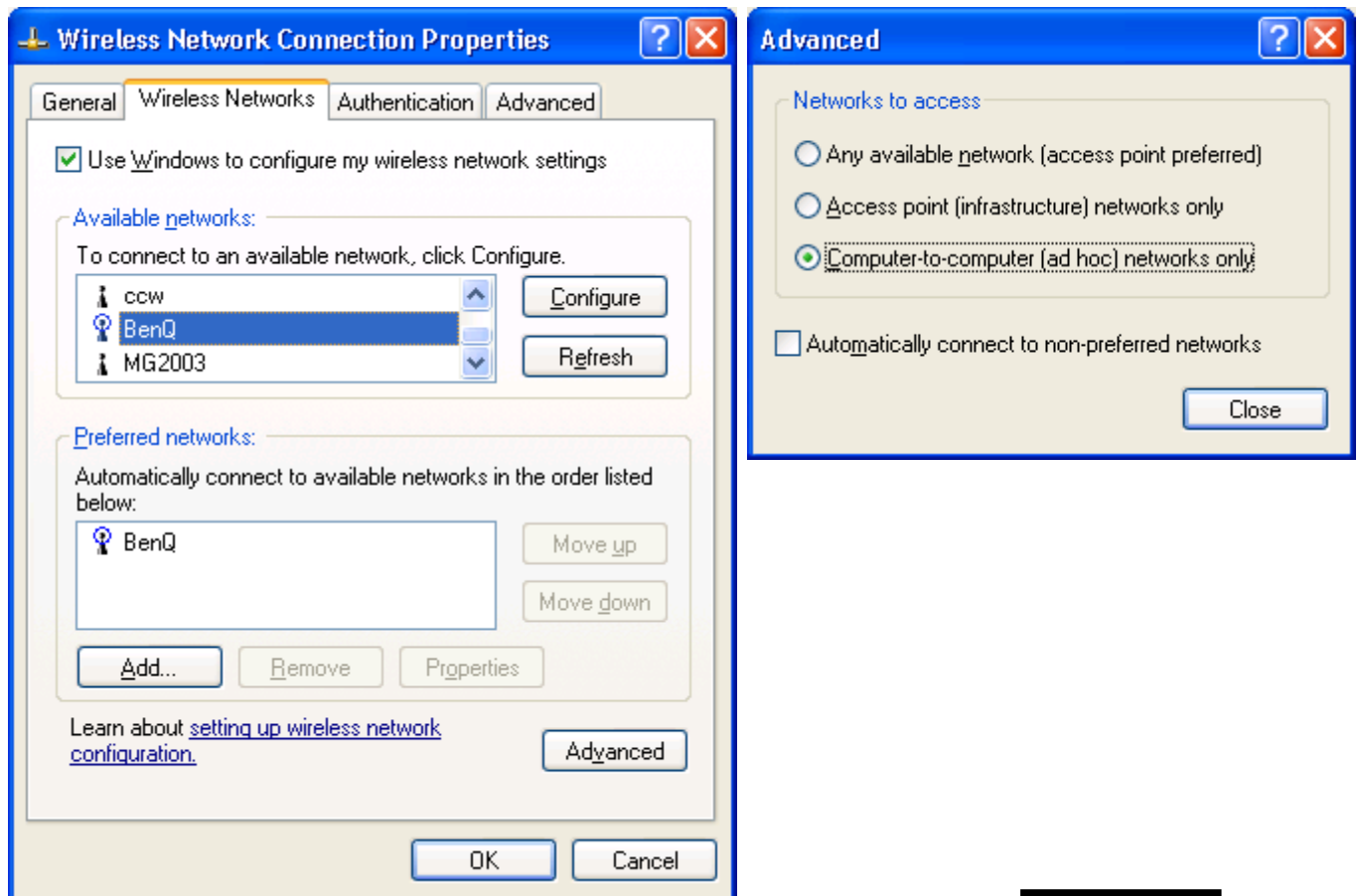
Click on the Wireless Network Connection icon. The Connect to Wireless Network dialog will appear.

Select your network from the available networks list and press **Connect** button.



Now BenQ AWL400 is connected to the BenQ network with excellent signal strength.

To set the network type, press Advanced button in the Wireless Networks page.



NOTE

To learn more about Windows XP built-in configuration utility, please press **Learn about setting up wireless network configuration** in the Wireless Networks page.