

# WLAN PC Card AWWL100

## Quick Start Guide

**BenQ**

## Introducing AWL100 Wireless LAN PC Card

Thank you for purchasing a BenQ AWL100 Wireless LAN PC Card. The AWL100 Wireless LAN PC Card lets you connect to your network and the Internet without needing to be tethered to a fixed location by a physical cable, while still getting the same data transfer rates as with traditional Ethernet. In addition to allowing you to enjoy the wonders of wireless networking, the AWL100 provides two operating modes: ad-hoc mode (peer-to-peer) and infrastructure mode (station-to-AP) to suit different purposes.

### Quick Installation for the AWL100

**Before installing the PC card, set up an Access Point device first, as one is needed for the infrastructure operating mode.**

Follow the instructions below for installing your AWL100 Wireless LAN PC Card.

**I** Insert your AWL100 into the PCMCIA slot of your notebook PC. The operating system will detect this new hardware and display the **"Add New Hardware Wizard"** window.

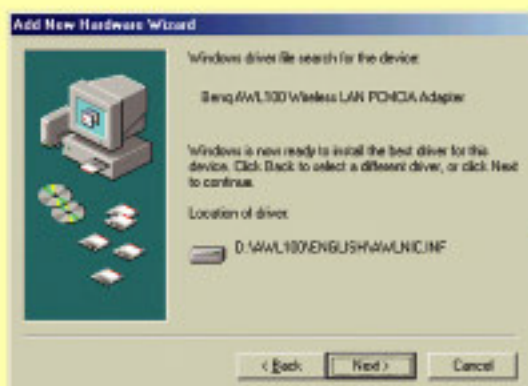
**II** Click on the **"Next"** button.



**III** Check the item **"Search for the best driver for your device. (Recommended)"**, and then click on the **"Next"** button.

**IV** Insert the Software CD into the CD-ROM drive and check the item **"Specify a location"** to display the path of the folder containing the driver. To determine this path, click on the **"Browse"** button. Then click on the **"Next"** button.

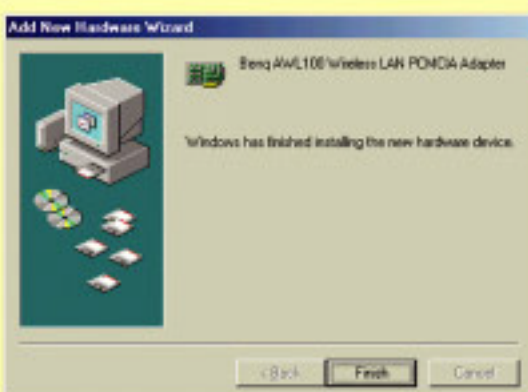




The system will find and show the location of driver. Click on the **"Next"** button.



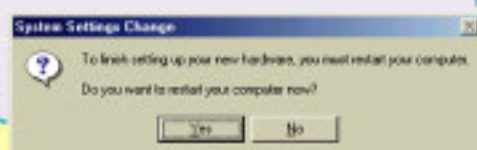
Wait for the needed files to be copied.



Click on the **"Finish"** button to finish the installation.



Restart your computer.



You can now enjoy the convenience of wireless networking with your BenQ Wireless LAN product. For more detailed configuration instructions, please refer to the user manual on the Software CD.

## System Requirements

- ◆ Notebook PC with PCMCIA Type II slot and CD-ROM drive
- ◆ Microsoft Windows 98SE/ME/2000/XP operating system

## Package Contents

- ◆ AWL100 Wireless LAN PC Card
- ◆ Software CD containing user manual, drivers and utility
- ◆ Quick Start Guide
- ◆ Warranty Card

## Status Indicator on AWL100



### Status Indicator (Green):

**Blink twice:** when put into Notebook

**Blinking:** rescan with other station or AP

**Solid Green:** link and activity mode