



DLP™ technology by Texas Instruments offers crystal clear images with superior quality.

Having trouble with
your current projector?
Try the BenQ projector PB8250.



PB8250/PB8240/PB8140
Digital Projector

BenQ
Enjoyment Matters

Total Performance as a combination of reliability and brilliant picture

Designed for large or open venues, the new installation series PB8250 projector features 3000 ANSI Lumens with reliable DLP™ projection system including BenQ's advanced features (micro dust filters and T-flow cooling system).

The BenQ PB8250 brings you the consistency of great projection quality that will accommodate for any business, institutional, or educational purposes.

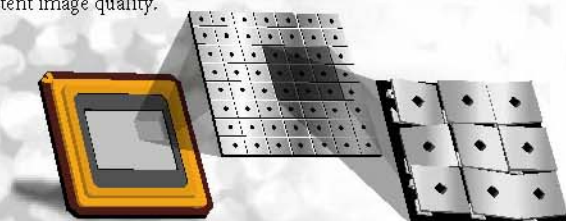
Most Reliable Choice among installation projectors

For public equipments like installation projectors, a high degree of reliability and consistency is crucial. Thus, BenQ develops several safeguards to offer maximum performances.

DLP™'s reliable design



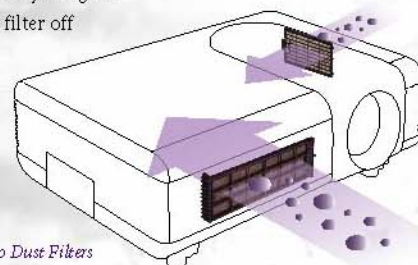
Traditional LCD projectors' image quality decline quickly and the color distorts after operating for thousands of hours. The design of DLP™ system, Digital Light Processing, solves the problem because the DMD™ chip won't decay easily through time. Therefore, the BenQ PB8250 with DLP™'s long-lasting design provides consistent image quality.



DLP™ Technology

Micro Dust Filters

Do you realize how air can damage your projector? Micro dusts in the air can harm the fine DMD™ chipsets which hinders the projector's performance. BenQ specially designed a "Micro Dust Filter" to filter off the micro dust when air passes through.



Micro Dust Filters

T-Flow Cooling System

Overheating not only makes the projector unstable but also shortens its lifetime. BenQ's innovative "T-flow Cooling System" with 4 individual fans provides internal cooling to maintain a low temperature for the lamp and DMD™ chip to ensure a long lasting performance.



T-Flow Cooling System

Up to 3,000 hrs Lamp Hours



Some projectors are low-priced when purchased but there could be more maintenance costs contingent on its durability in the following years.

BenQ PB8250 has up to 3,000 hours of lamp life (Economic mode) and is placed among the class of best performances in current projectors. On the other hand, the maintenance cost is among the lowest in its class.

Perfect Performance for Big Times!!

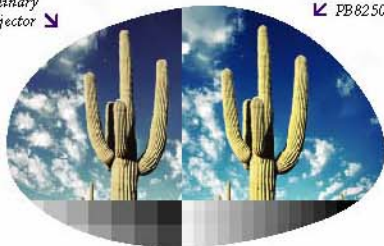
Brightness at 3,000 ANSI Lumens

With a brightness of 3,000 ANSI Lumens, the BenQ PB8250 can satisfy all your needs for an outstanding presentation during meetings whether you're in a boardroom, hall, or big classroom. High-brightness is the rule for an eye-opening experience!

Contrast Ratio at 2,000:1

When in an assembly hall or auditorium, having only brilliant brightness is not enough. You need extra high contrast to edge your pictures sharply. With a contrast ratio of 2000:1, the BenQ PB8250 heightens contrast between pure white and black. Captivate your audiences with sharp-edged texts and crisp images!

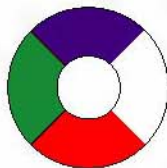
Ordinary Projector



2000:1 Super High Contrast Ratio

True Color: Golden Ratio Color Wheel

Each photo speaks more than a thousand words. DLP™ projectors use color wheel to accurately reproduce color with the color wheel ratio shaping its quality. With years of research and experience, BenQ identified the golden ratio of color wheel to fully utilize the lamp's spectrum. Every picture becomes more lively and vivid.

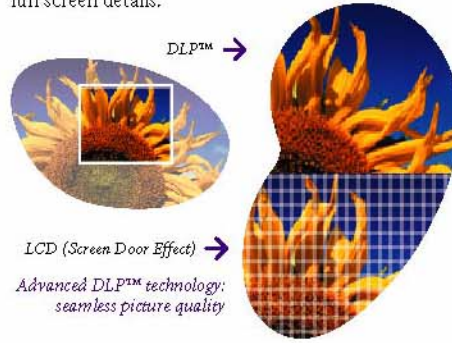


Golden Ratio Color Wheel

Clarity: Native XGA resolution & DLP™ seamless image design

The DLP™'s seamless image design enables the

BenQ PB8250 to give you clean and sharp images no matter how large the screen is. BenQ's unique low distortion projection lens helps to project clear image quality. Also, the PB8250 native XGA resolution (1024*768) offers high definition full screen details.



Advanced DLP™ technology: seamless picture quality

Motion: Multi-media presentation in Progressive Scan and HDTV



HDTV Compatibility video quality

The BenQ PB8250 is equipped with professional Progressive Scan that upgrades interlaced video signals to progressive format. Furthermore, the HDTV compatible feature presents a high resolution video quality of HDTV signals which will grab your attention immediately.



Progressive Scan

Quick Preparation Process

Full Connectivity with DVI-I Digital Input

Versatile connectivity is vital for installation projectors to meet all possible needs: multi-presenters, movies or video clips. The full connectivity of BenQ PB8250 not only satisfies the above but also covers for dual presenters with 1 D-Sub and 1 DVI input. Even better, the inevitable video noise through analog inputs can be effectively removed with digital input (DVI terminal). The video inputs from Component Video to S-Video allows for a more full-bodied presentation. Controlling and monitoring the BenQ PB8250 with your PC system from afar through RS232 port makes the management of your projector more flexible.

8 Pre-Set Modes for all kinds of circumstances

By adjusting the color and brightness settings on the projector, you can fine tune your performance to fit the current condition perfectly. However, there are often little time before presentation to do so. BenQ PB8250's 8 Pre-Set modes make suitable adjustments for different conditions quickly and easily with just a few buttons away. For example, The Presentation Mode is to enhance brightness for most typical presentation situations and is in default. Vivid Mode is available when there is a heavy load of photos involved. Video mode is appropriate for playing video clips during the presentation, and the Economic Mode can extend the lamp life up to 3000 hours.



PC Signal / Mode			
Presentation	Vivid	Video	Economic

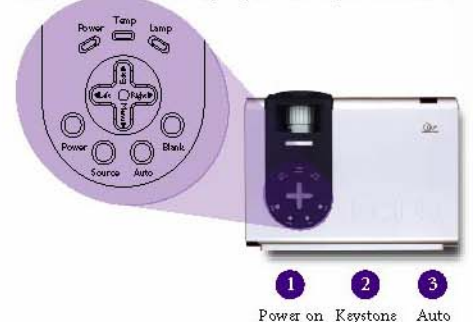


AV Signal / Mode			
Gaming	Cinema	Video	Economic



Easy startup

Startup should never be a frustrating experience! BenQ PB8250 breaks it down to 3 simple steps: (1) Push "Power" to turn on the projector (2) Push "Keystone" to correct the image shape (3) Push "Auto" to match to input signal frequency. Then take on an exciting trip to amaze your audience!



Input / Output Connections (Detail)

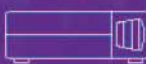
- 1 RGB(D-sub) input
- 2 RGB(D-sub) output
- 3 Audio L/R connector
- 4 Composite video connector
- 5 DVI-I connector
- 6 S-Video jack
- 7 RS 232 control port
- 8 PC audio jack
- 9 USB connector



Specifications

Model Name	PB8250/PB8240/PB8140
Projection System	DLP™ technology by Texas Instruments®
Panel	PB8250/PB8240 : 0.7" XGA DDR DMD™ x 1 PB8140 : 0.55" SVGA DDR DMD™ x 1
Native Resolution	PB8240/PB8250 : XGA (1024 x 768) PB8140 : SVGA (800x 600)
Resolution Supported	640 x 350 to 1280 x 1024
Brightness	PB8250 : 3000 ANSI lumens PB8240 : 2500 ANSI lumens PB8140 : 2000 ANSI lumens
Lamp	PB8250 : 300W, 2000 / 3000 hours (Normal/Economic mode) PB8240/PB8140 : 250W, 2000 / 3000 hours (Normal/Economic mode)
Contrast Ratio	2000:1
Aspect Ratio	4:3 Native, 16:9 Selectable
Color	Full 16.7 million color palette
Lens	F=2.4 to 2.6, f=24.0-29.1 mm
Zoom Ratio	Manual Zoom, 1.22:1
Image Size (Diagonal)	22" to 300"
Throw Ratio	60" @ 6.6 feet (60" @ 2m)
HDTV Compatibility	480p, 576p, 720p, 1080i
Video Compatibility	NTSC, PAL, SECAM
Input Terminals	PC Analog RGB : D-sub 15 pin x 1 (shared) Analog RGB : DVI-I x 1 (shared) Digital RGB : DVI-I x 1 (HDCP) A/V Component Video : D-sub 15 pin x 1 (shared) S-Video : Mini DIN 4 pin x 1 Composite Video : RCA x 1 Audio PC Audio : Stereo Mini Jack x 1 Video L/R Audio : Audio L/R RCA x 2
Output Terminals	Analog RGB : D-sub 15 pin x 1 1 Watt Speaker x 2
Control Terminals	Mouse Control : USB x 1 (shared) RS-232 Serial Control : Mini Din 9 pin x 1 USB Serial Control : USB x 1 (shared)

Projection Size



Distance (m)	1	1.5	2	2.5	3	5	6.5	10
4:3 aspect ratio, screen size (inch)	24"~30"	37"~45"	49"~60"	61"~75"	74"~90"	123"~150"	159"~195"	245"~300"
16:9 aspect ratio, Screen Size (inch)	23"~28"	34"~41"	45"~55"	56"~71"	68"~83"	113"~138"	147"~179"	226"~276"

Headquarters

BenQ Corporation
Digital Media Business Group
157 Shan-Ying Rd., Guehsan
Taoyuan 333, Taiwan, R.O.C.
Tel : +886-3-359-5000
Fax : +886-3-359-9000

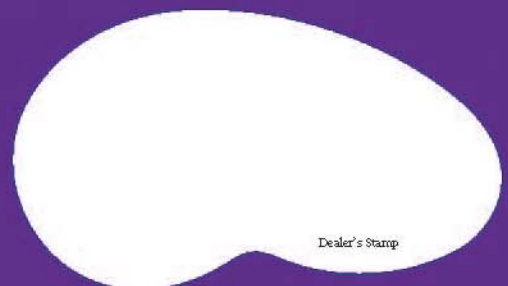
America
BenQ America Corp.
53 Discovery Irvine,
CA 92618, U.S.A.
Tel +1-949-255-9500
Fax +1-949-255-9600

Europe
BenQ Europe B.V.
Eldersrijt 4130, 5692 DC Son,
The Netherlands
Tel: +31-499-750-500
Fax: +31-499-750-599

Asia Pacific
BenQ Asia Pacific Corp.
16 Jihu Road, Neihu,
Taipei 114, Taiwan, R.O.C.
Tel: +886-2-2799-8600
Fax: +886-2-2659-1959

China
BenQ (IT) Co., Ltd.
268 Shi-Shan Road,
Suzhou 215011, China
Tel: +86-512-6825-1233
Fax: +86-512-6825-1233-2299

Horizontal Frequency	24 ~ 88 kHz
Vertical Scan Rate	48 ~ 100 Hz
Dimensions (W x H x D)	12.6 x 4.2 x 9.3 inches (320 x 106 x 236 mm)
Weight	PB8250 : 7.9 lbs (3.6 kg) PB8240/PB8140 : 7.7 lbs (3.5 kg)
Power Supply	100 to 240 V.A.C, 50 to 60 Hz
Power Consumption	PB8250 : 395W (Max., 80% at Economic mode) PB8240/PB8140 : 330W (Max., 80% at Economic mode)
Audible Noise	PB8250 : <33/30 dB (Normal/Economic mode) PB8240/PB8140 : <32/28 dB (Normal/Economic mode)
On-Screen Display Languages	English/ French/ German/Italian/ Spanish/Korean/Simplified Chinese/ Traditional Chinese/Japanese/Russian
Preset Modes	PC Input : * Presentation mode * Video mode * Vivid mode * Economic mode A/V Input : * Gaming mode * Video mode * Cinema mode * Economic mode
Features	* Digital Keystone * HDTV Compatible * Auto Adjustment * Macintosh® Compatible * Freeze * Preset Modes * Blank * PIP, Picture in Picture * Progressive Scan * Mute * Laser Pointer * Digital Zoom * Source Detection * Wireless Mouse
Accessories (Standard)	* User's Manual * VGA Cable * Quick Start Guide * VGA-Component cable * Manual CD * VGA-DVI-I cable * Warranty Information Booklet * S-video Cable * Remote Control * PC Audio Cable * AAA Batteries * RCA L/R Audio cable * 3-2 Converter * USB Cable * Soft Carry Case * PWR Cord(UK, US, EU)
Accessories (Optional)	* Ceiling Mounting Kit * Wireless Pro * Mac Adapter * Presentation Pro * Lamp Module * Presentation Phas * Video Cable * Micro Dust Filter



Dealer's Stamp

BENQ

Enjoyment Matters