

# CTM 1000A

## Modular Small-diaphragm Condenser Microphone System

### Description

Packaged in a rugged, machined brass housing, the CTM 1000A condenser microphone provides accurate and transparent acoustic capture. The transformerless design reduces low-frequency amplitude and phase distortions to improve clarity and detail. The low-mass, 1/2" gold-sputtered diaphragm and the smooth, extended frequency response make the CTM 1000A an excellent choice for choirs, symphony, cymbals, hi-hats, strings, acoustic guitars, woodwinds and piano.

The modular design allows us to include interchangeable capsules for both cardioid and omnidirectional polar patterns. The cardioid capsule provides off-axis rejection as well as low-frequency enhancement in the near field. The omnidirectional capsule ensures accuracy in all directions and distances for ambient miking and spatial acquisition.

The three-position high-pass filter can be used for tonal tailoring as well as vibration, rumble, and HVAC noise reduction. The three-position attenuator allows the microphone to be used in high and extreme sound pressure applications without overload.

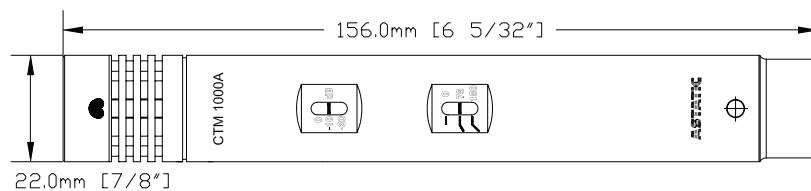
The CTM 1000A's accuracy, flexibility, and size make it an indispensable tool in the professional audio environment.

### Features

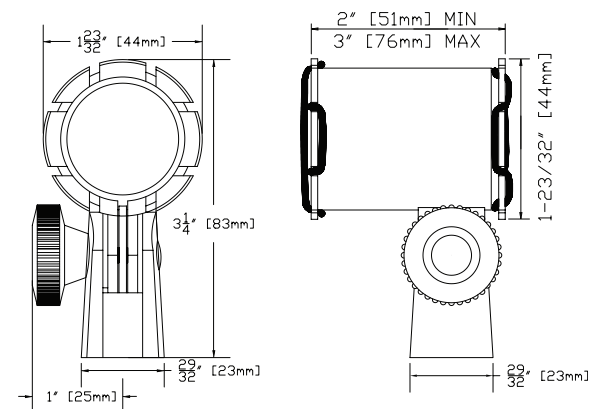
- Modular design (omnidirectional and cardioid capsules included)
- Smooth, extended frequency response
- Low-noise, balanced, transformerless circuitry
- 3-position high-pass filtering (none, 6dB/oct at 75Hz and 6dB/oct at 150Hz)
- 3-position attenuation (0, 10dB and 20dB)
- Includes microphone clip, shock mount, and internal framed windscreens.



Microphone



Shock Mount



# CTM 1000A

## Modular Small-diaphragm Condenser Microphone System

### Specifications†

<b>Operating Principle</b>	.....Condenser
<b>Polar Pattern</b>	.....Cardioid and Omnidirectional
<b>Frequency Response</b>	.....20Hz - 20KHz
<b>Sensitivity</b>	.....-40dBV (10mV) @ 1Pa
<b>Impedance</b>	.....85 ohms
<b>Self Noise</b>	.....22dBA
<b>Maximum SPL</b>	.....145dB, 20dB attenuator engaged, 1% THD
<b>Switches</b>	.....High-pass filter, attenuator
<b>High-pass Filter</b>	.....Off 75Hz, 6dB/octave 150Hz, 6dB/octave
<b>Attenuator</b>	.....0dB, 10dB and 20dB
<b>Power Requirements</b>	.....P48, 2mA
<b>Connector</b>	.....3-pin XLR type
<b>Polarity</b>	.....Positive pressure on diaphragm corresponds to positive voltage on pin 2 relative to pin 3, in agreement with AES14-1992 (r2004).
<b>Grille Screen</b>	.....Perforated stainless steel
<b>Case</b>	.....Machined brass
<b>Finish</b>	.....Durable non-reflective dark gray
<b>Dimensions</b>	.....See drawing
<b>Net Weight [Mass]</b>	.....7.6oz [216g]
<b>Packaged Weight [Mass]</b>	.....1lb 1oz [482g]

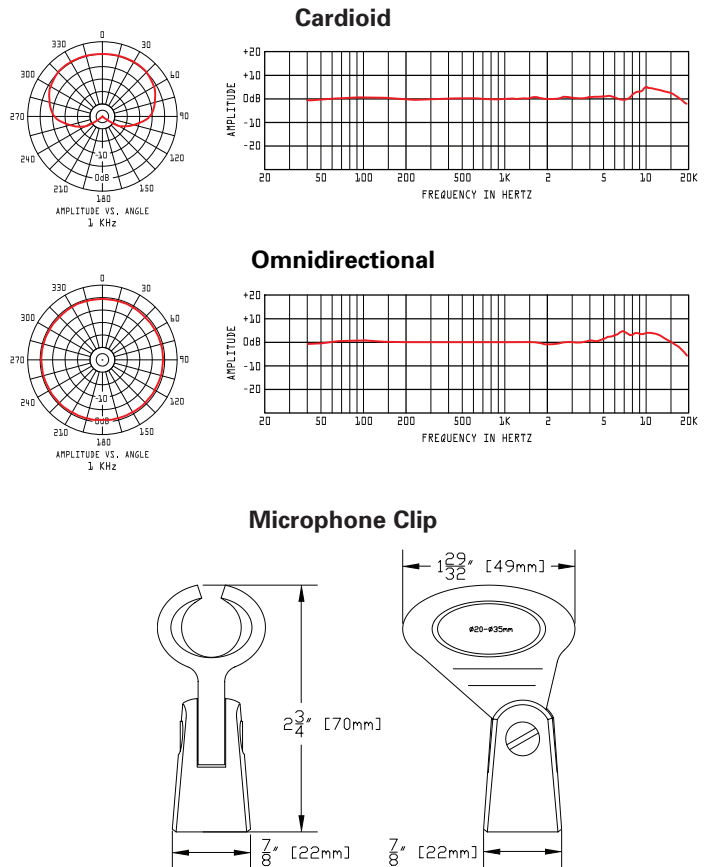
†Specifications subject to change without notice.

### Architects' and Engineers' Specification

The microphone will be an Astatic CTM 1000A. The microphone will be a condenser microphone. The frequency response will be 20Hz - 20KHz. The microphone will be modular-capsule design and include omnidirectional and cardioid polar patterns. The sensitivity of the CTM 1000A will be -40dBV (10mV) @ 1Pa. The microphone will have a professional 3-pin XLR type output connector.

The microphone will have 3-position high-pass filtering (none, 6dB/oct at 75Hz and 6dB/oct at 150Hz). The microphone will have 3-position attenuation (0dB, 10dB and 20dB). The microphone will operate from standard P48 phantom power consuming 2mA. The dimensions of the microphone will be 6-5/32" [156mm] long and 7/8" [22mm] in diameter. The microphone will be made of brass with a stainless steel grille screen. The microphone will have a durable non-reflective dark gray painted finish. The net weight will be 7.6oz [216g]. The microphone will be supplied with a shock mount and microphone clip.

The Astatic CTM 1000A is specified.



### Two-Year Limited Warranty

Astatic Commercial Audio Products hereby warrants that this product will be free of defects in material and workmanship for a period of two years from the date of purchase. In the unlikely event that a defect occurs Astatic will, at its option, either repair or replace with a new unit of equal or greater value. Retain proof of purchase to validate the purchase date and return it with any warranty claim.

This warranty excludes exterior finish or appearance, damage from abuse, misuse of the product, use contrary to Astatic's instructions or unauthorized repair. All implied warranties, merchantability, or fitness for a particular purpose is hereby disclaimed and Astatic hereby disclaims liability for incidental, special or consequential damages resulting from the use or unavailability of this product.

This warranty gives you specific legal rights and you may have other rights that vary from state to state. Some states do not allow the exclusion or limitation of incidental or consequential damages or limitations on how long an implied warranty lasts, so the above exclusions and limitations may not apply to you.

Note: No other warranty, written or oral is authorized by Astatic Commercial Audio Products.

### Shipping Instructions

Please call our customer service department at 440-349-4900 for a pre-approved return authorization number.

Carefully repack the unit and return the insured package to: Astatic Commercial Audio Products, 6573 Cochran Road, Building I, Solon, Ohio 44139.

**RETURNS WITHOUT A PRE-APPROVED RETURN AUTHORIZATION NUMBER WILL BE REFUSED.**

If outside the United States, contact your local dealer or distributor for warranty details.



©2007 Astatic Commercial Audio Products  
Part No. 46873-72-01 rev01 Feb2007

**ASTATIC**  
Commercial Audio Products  
*Installed since 1951*

**Astatic Commercial Audio Products**  
6573 Cochran Rd. Building I Solon, Ohio 44139 U.S.A.  
Tel: (440) 349-4900 Fax: (440) 248-4902 Sales: (800) 421-3161  
[www.astaticinstalled.com](http://www.astaticinstalled.com)