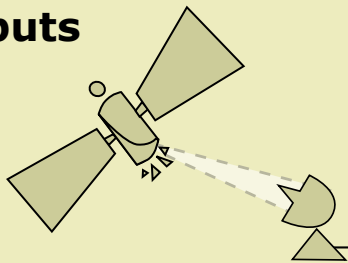
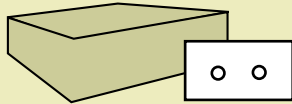


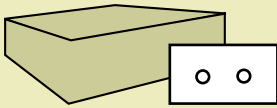
Inputs



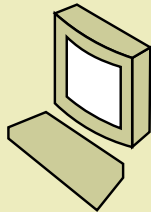
Satellite Feeds
(ex: programs, news, live shows)



Video Tape Recorder- RS422
(programs, commercials)

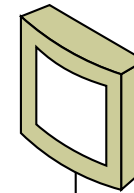
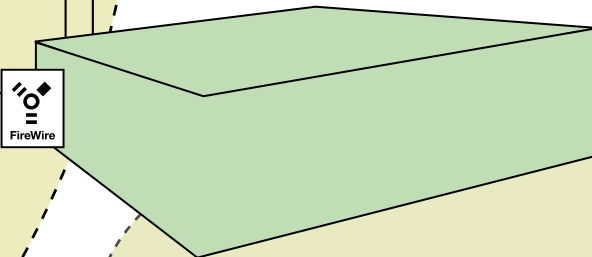


Video Tape Recorder - FireWire
(programs, commercials)



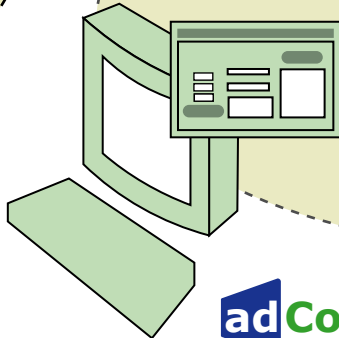
Non-Linear Editor (FireWire)
(ex: Final Cut)

adCode™ Server



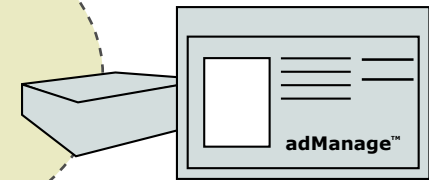
Monitor for
Confidence Decode

Local Area Network



adCode™ Application

Control Computer MAC/PC



adManage Content Management Server

- Features:
- encode list
 - content database
 - security
 - MVL



The adCode server and application combine to provide a media ingest station for MPEG 2 standard definition encode, review and approval of commercial and program material from FireWire (DV25), SDI, analog composite or YC sources. adCode includes control of professional VTRs over

serial RS-422 or FireWire for accurate selection of acquisition material. Live feeds from satellite or newsroom sources can also be recorded on command by adCode. If you work in a non-linear editor like Final Cut, you can export directly to adCode without rolling tape in real time.

Adtec Digital
 408 Russell Street, Nashville, TN 37206
 Phone 1.615.256.6619
 Fax 1.615.256.6593
www.adtecinc.com