



# SMITH & WESSON



## 38 MILITARY & POLICE REVOLVER MODEL No. 10

PARTS LIST • INSTRUCTIONS FOR USE • MAINTENANCE  
SPECIFICATIONS • GUARANTEE



## SMITH & WESSON

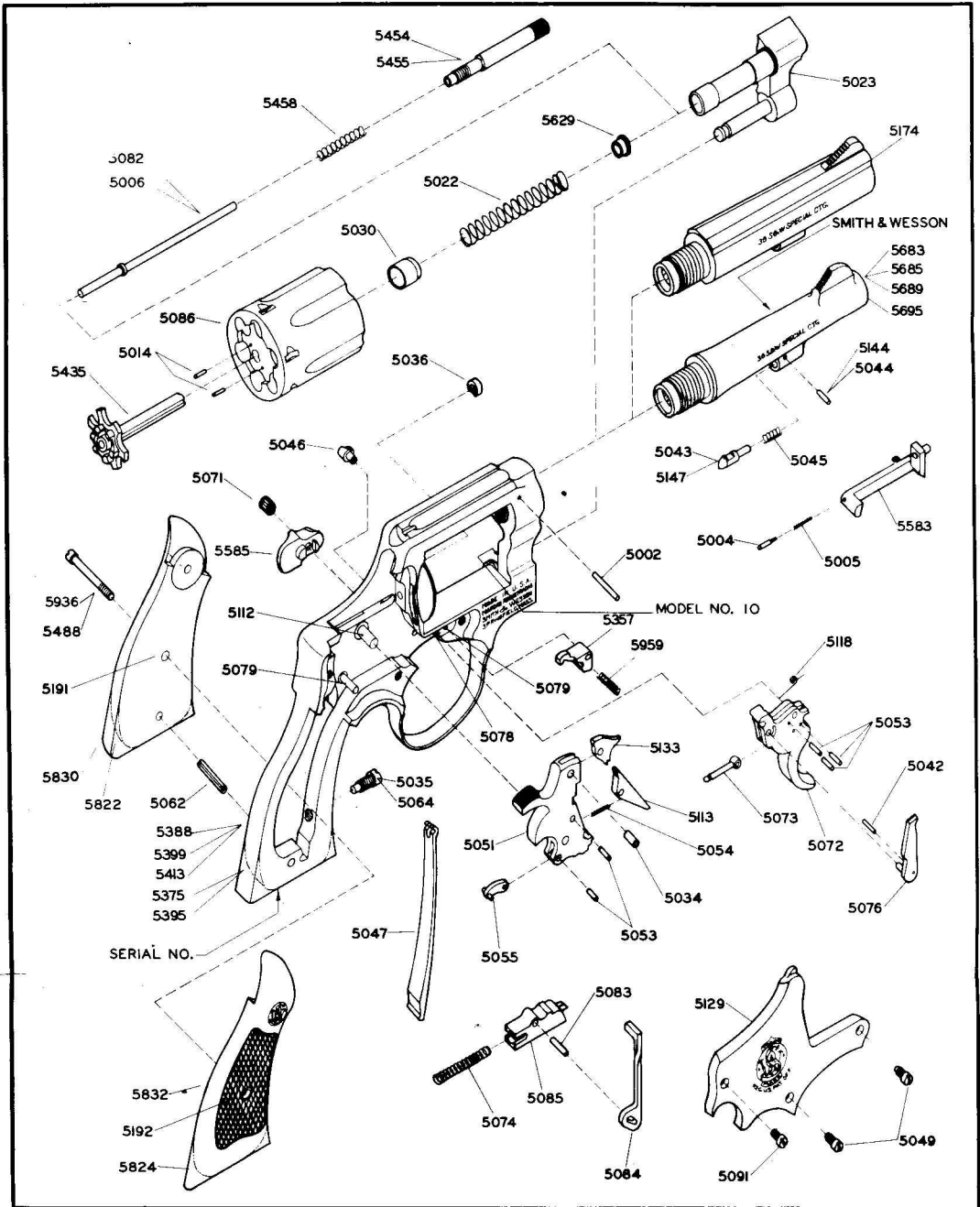
OF BANGOR PUNTA <sup>®</sup>

**Springfield, Massachusetts, U. S. A.**

# SMITH & WESSON

## 38 MILITARY & POLICE REVOLVER

### MODEL No. 10



### SPECIFICATIONS

**Caliber** ..... .38 S&W Special  
**Number of Shots** ..... 6  
**Barrel** ..... 2, 4, 5 or 6 inches  
**Length Over All** ..... With 4-inch barrel,  
 9¼ inches  
**Weight** ..... With 4-inch barrel,  
 30½ ounces

**Sights** ..... Fixed, 1/8-inch serrated  
 ramp front; square  
 notch rear  
**Frame** ..... Round or square butt  
**Stocks** ..... Checked walnut Magna  
 with S&W monograms  
**Finish** ..... S&W Blue or Nickel  
**Ammunition** ..... .38 S&W Special, .38  
 S&W Special Mid Range

**NOTE** ..... The .38 Military & Police Square Butt is also supplied in a 4-inch heavy barrel model with 1/8-inch ramp front sight and matching rear notch. Weight, 34 ounces. (Price and model number remain the same, but **HEAVY BARREL** must be specified on original order.)

