

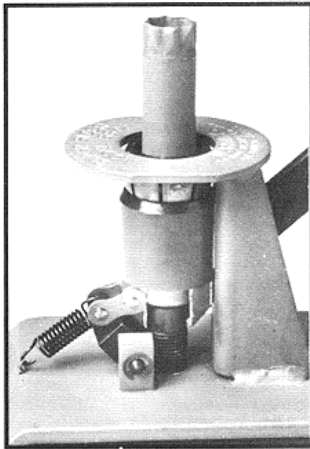
mec

SUPER-SIZER



One pull and the hull is back to factory specifications.

The MEC Super-Sizer is the revolutionary approach to shotshell resizing. One easy pull and our exclusive Power Ring forces eight steel fingers against the brass. The Super-Sizer **squeezes** all around the shell — the full length of the brass. Pressure is spread out evenly over the entire surface area of the base metal. The metal is actually drawn back to factory specifications. The shell works freely in any magazine tube and will chamber perfectly.



Proper resizing is important with today's close gun tolerances. We offer a radically new system. The shells we resize will work in the most exacting shotguns. With all due respect to our competition, their resizing methods haven't changed in years. No competitor has any piece of equipment that can resize like the MEC Super-Sizer. The same system is built into all our NEW GENERATION of reloaders.

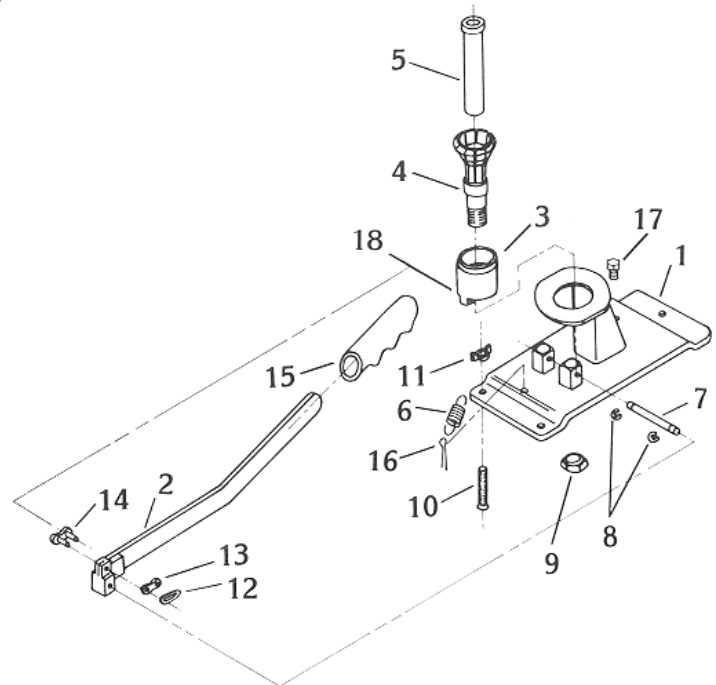
The MEC Super-Sizer is different. It's better. We don't just make it work. We make it right.

To Change Gauge

Remove base mounting bolts (item 10), invert unit, push pad (item 5) free of the collet. Remove nut (item 9), turn collet (item 4) counter clockwise to remove and place in safe storage. Thread the replacement collet through the base and loosely apply nut. Turn collet clockwise until level with the table. Replace pad. Drop shell into collet and depress handle. If undue pressure is required to depress the handle, turn collet counter clockwise in 1/8 turn increments to arrive at proper adjustment. Secure nut (item 9), return unit to previous base mounting and secure. Micrometer, gun barrel or MEC Shell Checker can be used to confirm that the shell has been satisfactorily resized to MEC standards and fit minimum chamber dimensions of:

.858 10ga. 21.79mm	.699 20ga. 17.75mm
.810 12ga. 20.57mm	.627 28ga. 15.92mm
.745 16ga. 18.92mm	.478 .410 12.14mm

Ref. No.	Part No.	Name
1	8085	base
2	8088	handle assembly
3	8106	closer
4	8080	collet (specify gauge)
5	8109	pad (specify gauge)
6	8103	spring
7	8022	pin
8	8023	retaining ring
9	8017	nut
10	313C	mounting bolt
11	713D	wing nut
12	8032	chain link assembly
13		
14		
15	709C	grip
16	574C	cotter pin
17	8141	bolt
18	8113	bushing



NOTE:

After cleaning, extended use or at the first indication of the closer seizing to the collet, the outside of the collet should receive a coating of graphite impregnated grease or its equivalent. Keep unit free of rust, dirt and residue. Lubricate friction and pivot points.