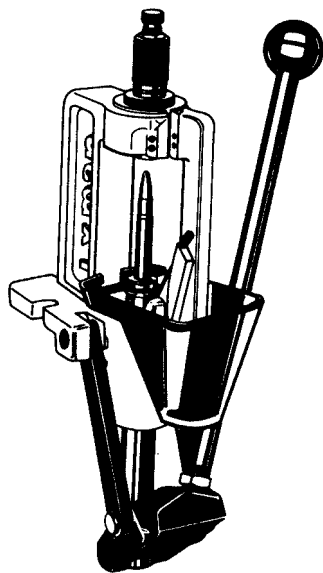


# LYMAN'S ORANGE CRUSHER/ CRUSHER II PRESS

Your new Crusher Press combines the most desirable features of O-Frame press design with innovations that make it truly distinct as a reloading tool. Its magnum press opening easily accommodates extra long cartridge case and bullet combinations without the handling con-tortions required by standard O-Frame presses. Standard length cases are even easier to reload.

Three staggered mounting holes, instead of the stan-dard two, keep the press firmly attached to the loading bench top, without weakening the grain in planked bench tops, allowing the reloader to take full advantage of the Crusher's powerful compound leverage mechanism - which will easily full-length resize the largest cartridge cases as well as easily handle any case-forming or bullet swaging task.



## Setting up the Crusher

Remove the Crusher from its carton and position it against the edge of the bench top in the most convenient location (usually near the center of the bench, leaving a work area on each side). Mark the position of the mounting holes, drill them and use three 3/8" bolts, with washers and nuts, to securely anchor the Crusher.

The toggle link mechanism and ram have been factory installed.

Decide which mode of operation you prefer - right or left hand - and install the handle in the appropriate mounting hole in the linkage toggle. Be sure to thread the locknut onto the handle first. After the handle is screwed into the toggle, lock it in place by turning the locknut to a jam-fit against the toggle surface.

NOTE: A positive stop built into the frame blocks handle travel after the ram has passed top dead center. No further pressure should be applied, once the stop is reached, to prevent possible damage to the press.

## Installation of the Shell Holder

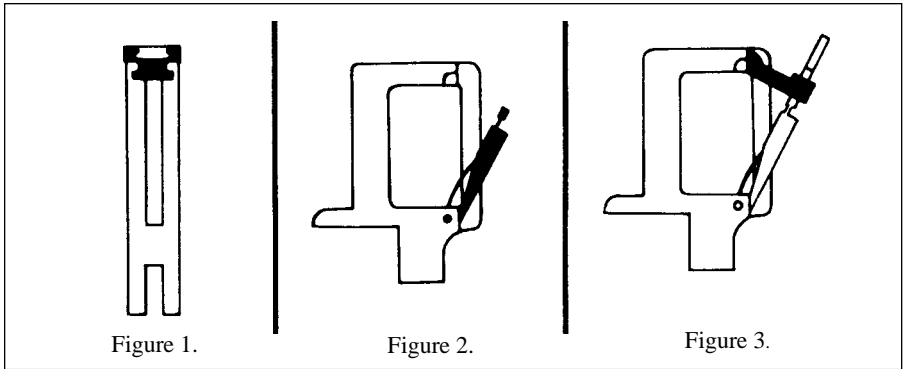
The shell holder slides into the slotted top of the Crusher ram (Figure 1) and is held in place by the integral spring clip. To make the shell holder more accessible to your hand, turn it slightly to the left if you are right handed; slightly to the right if you are left handed. Most reloaders use their strongest arm to operate the ram.

Extra shell holders are available for a wide variety of cartridges as indicated in the current annual Lyman catalog.

## Installation and Use of the Priming Arm

Open the package containing the Lyman Universal Priming Arm. It contains a priming arm complete with a large priming sleeve and a large, flat primer punch to seat large primers. Should you need to seat small primers, substitute the small flat primer punch and sleeve

## Lyman's Crusher Press (continued)



packed separately using the enclosed Allen wrench.

To install, remove the retaining pin from the priming arm lug located in front of the press, to the left of the frame upright and in front of the ram. Position the priming arm as shown in **Figure 2**. Align the hole in the base of the priming arm with those in the cast iron press frame and reinsert the retaining pin.

To use the priming arm, place an unprimed cartridge case in the shell holder and a primer (anvil up) into the sleeve of the priming punch. Raise the ram to the top of its stroke and push the priming arm toward the press. The priming arm will enter the slot in the side of the ram and, as the ram is lowered, force the primer into the primer pocket of the case.

This is usually done when the cartridge case is being withdrawn from the decapping and resizing die but may be done later if you wish to clean or trim your cases before repriming.

### Installing the Primer Catcher

The plastic primer catcher is positioned, cup-side up, in front of the Crusher directly under the primer arm lug.

Secure the primer catcher to the press by fitting the plastic retaining bar into the slots provided atop the sidewalls.

It will catch and hold spent primers that are decapped during the resizing operation.

### Installation and Use of the Optional Automatic Primer Feed

Place the primer feed body between the lugs of the Crusher Press as shown in **Figure 3**.

The angle of the primer feed must be adjusted until the primer feed tube is directly over the priming punch sleeve when the priming arm is in the back position.

When this adjustment is correct, the primer feed tube will release a single primer into the primer arm's sleeve to be seated in the primer pocket of the cartridge case. The remainder of the primers will be kept in the tube by the cutoff pin.

Tighten the two set screws to securely hold the primer feed body once the proper adjustments have been made.

## *Lyman's Crusher Press (continued)*

### **Filling the Primer Tube**

To fill the primer tube, first insert one of the two supplied cotter pins through the hole in the side of the primer tube. Spread the ends of the cotter pin slightly to keep it from falling out. Next, place your primers anvil-side down in a small flatbottomed tray or dish.

Force the slotted end of the tube down over each primer. The cotter pin will prevent the primers from dropping from the open end of the tube when you turn it over.

Fill the tube completely, press the bushing ("O" ring) end firmly into the primer feed body and remove the cotter pin. One of the red plastic sleeves supplied should be slipped over the open end of the primer tube to prevent injury should your face or arm strike the top of the primer tube.

### **CAUTION**

Use extreme care when handling primers. Never mishandle any primer feed that malfunctions. Do not do anything that could cause a primer to explode when clearing a jam. Keep your work area clean, occasionally wiping up primer dust with a damp rag.

### **Installing the Dies**

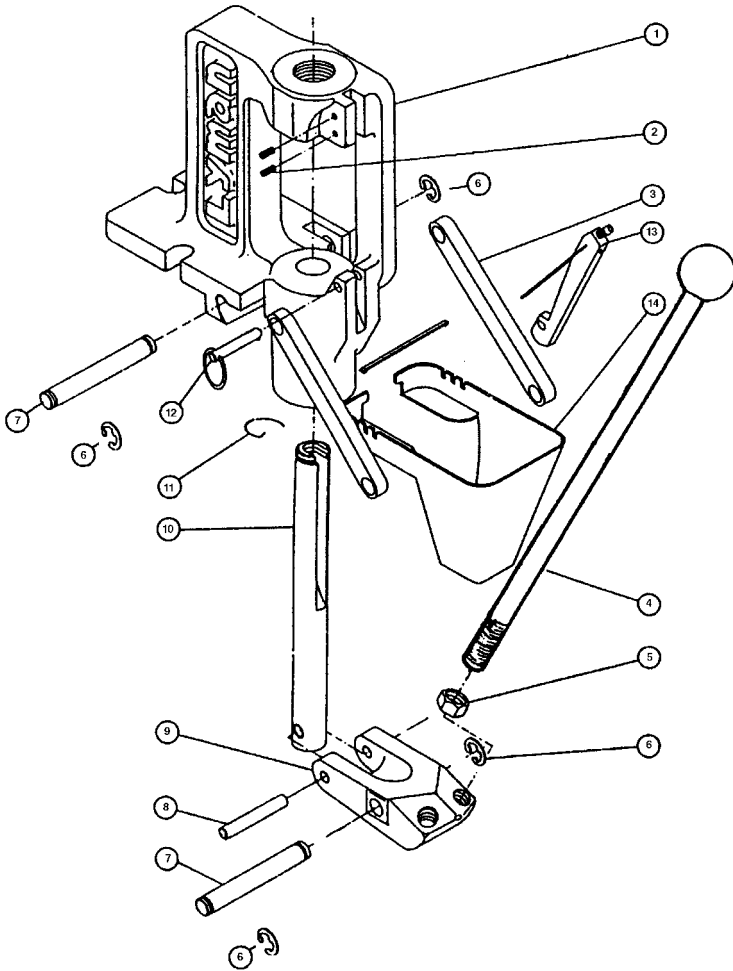
Now the press is fully assembled except for the installation of your 7/8" x 14 reloading dies. Complete instructions are included with each Lyman die set.

### **Lubrication and Care of Your Press**

Before using your press, apply a light film of powdered graphite to the bearing surfaces of all moving parts. Pay particular attention to the sides of the ram. Thin oil may also be used for this purpose but graphite is more desirable. If your press is to be used in a damp area it is recommended that you also protect unpainted surfaces with a thin film of oil.

**Visit our complete Lyman website at  
[www.lymanproducts.com](http://www.lymanproducts.com)**

# LYMANS ORANGE CRUSHER/ CRUSHER II PRESS

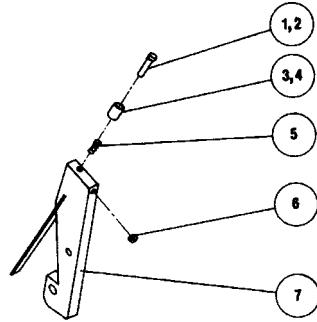


Key	Part Description	Part #	Key	Part Description	Part #
1	Frame	7726202	9	Toggle	7726210
2	Set Screw #10-24 (2)	7726115	10	Ram	7726212
3	Power Link (2)	7991463	11	Shell Holder Clip	7726109
4	Handle/Ball Assembly	7990503	12	Quick Release Primer Arm Pin	7729230
5	Handle Jam Nut	7726218	13	Universal Priming Arm	7728036
6	Toggle Pin Clip (4)	7726220P	14	Primer Catcher	7726420
7	Toggle Pin (2)	7726215		<b>Not Shown:</b>	
8	Ram Pin	7726213		Hex Key XX-80 3/32"	2998880

# Parts List for Lyman's Universal Primer Arm and Auto-Primer Feed Assemblies

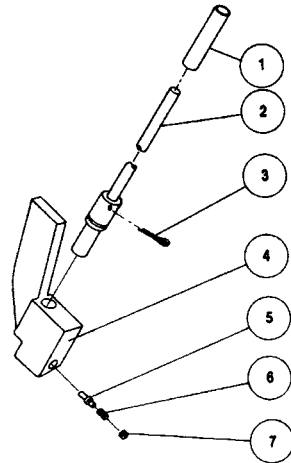
## Universal Primer Arm

Key	Part Description	Part #
1	Large Primer Punch	7992922
2	Small Primer Punch	7992924
3	Large Primer Sleeve	7992918
4	Small Primer Sleeve	7992919
5	Primer Sleeve Spring	7992920
6	Set Screw	7992932
7	Primer Arm Complete	7728036



## Crusher/T-Mag Auto Primer Feed

Key	Part Description	Part #
1	Large Primer Feed Tube	7412053
2	Small Primer Feed Tube	7412052
3	Cotter Pins (2)	7990050
4	Primer Feed Body	7726128
5	Primer Punch Stop	7992900
6	Compression Spring	7992927
7	Set Screw	2992929
	Primer Feed Complete	7729050



Visit our complete Lyman website at  
[www.lymanproducts.com](http://www.lymanproducts.com)