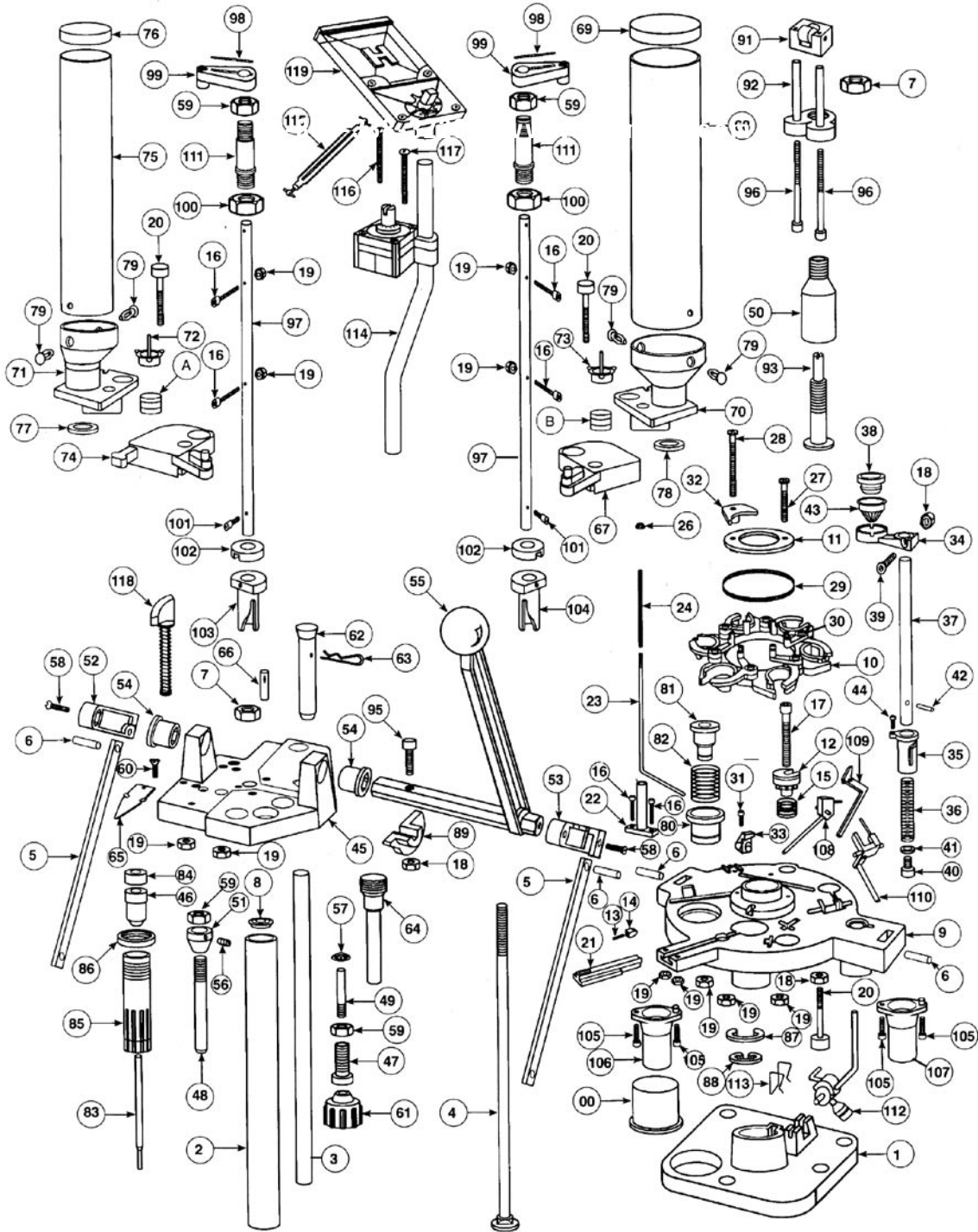


**APEX 3.1**



# APEX 3.1

## PARTS LISTING

### APEX 3.1™ PARTS LIST

KEY NO.	PART NO.	DESCRIPTION
1	310121	Base
2	370501	Main Guide Post
3	170502	Auxiliary Guide Post
4	170505	Main Guide Post Bolt
5	170508	Drive Link (2)
6	390074	1/4 X 3/4 Dowel Pin (4)
7	390097	3/8 -16 Plain Steel Hex Nut (2)
8	390654	Guide Post Bolt Retainer
<b>PLATEN ASSEMBLY</b>		
9	310101	Platen
10	310105	Shell Plate 12 GA
	310107	Shell Plate 20 GA
	310108	Shell Plate 28 GA
	310109	Shell Plate 410 Bore
11	310120	Shell Plate Retainer
12	370116	Primer Seater Pad
13	370334	Shell Plate Detent Spring
14	370333	Shell Plate Detent
15	370047	Primer Seater Spring
16	390104	6-32 X 1 Cap Screw (6)
17	370113	10-32 X 1 1/4 Cap Screw
18	392011	10-32 Hex Nut (4)
19	392452	6-32 Hex Nut (10)
20	170413	Measure Mount Bolt (3)
21	370520	Primer Slide
22	370521	Primer Slide Cam Holder
23	370522	Primer Feed Cam
24	370525	Primer Slide Cam Spring
26	370252	6-32 Nylock Nut
27	310131	6-32 x 1 1/4 BHSCS
28	310132	6-32 x 2 BHSCS
29	310119	Case Retainer Spring
30	310118	Case Retainer (6)
31	310130	10-32 x 5/8 SHCS
32	310110	Case Release Cam, 12 GA
	310111	Case Release Cam, 20 GA
	310112	Case Release Cam, 28 GA
	310113	Case Release Cam, 410 GA
33	310114	Case Lock, 12GA
	310115	Case Lock, 20 GA
	310116	Case Lock, 28 GA
	310117	Case Lock, 410 GA
<b>WAD GUIDE ASSEMBLY</b>		
34	170600	Wad Guide Arm
35	170601	Wad Guide Cam
36	170602	Wad Guide Return Spring
37	170603	Wad Guide Shaft
38	170610	Wad Guide Cap 12 GA
	170612	Wad Guide Cap 20 GA
	170613	Wad Guide Cap 28 GA
	170614	Wad Guide Cap 410 Bore
39	390116	10-32 X 3/4 Button Hd Cap Screw
40	390130	10-32 X 1/2 Cap Screw
41	390651	10 SAE Plain Washer
42	390655	3mm x 12mm Dowel Pin
43	480007	Spring Finger 12 GA
	480009	Spring Finger 20 GA
	480010	Spring Finger 28 GA
	480011	Spring Finger 410 Bore
44	390200	5-40 x 3/8" Cap Screw

KEY NO.	PART NO.	DESCRIPTION
<b>DIE HEAD ASSEMBLY</b>		
45	310122	Die Head
46	170215	Case Ejector/Deprime 12 GA
	170217	Case Ejector/Deprime 20 GA
	170218	Case Ejector/Deprime 28 GA
	170219	Case Ejector/Deprime 410 Bore
47	170315	Crimp Starter Holder
48	170337	Primer Seater Punch 10/12/20 GA
	170338	Primer Seater Punch 28 GA
	170339	Primer Seater Punch 410 Bore
49	392101	Crimp Starter Rod
50	170380	Crimp Die Body 12 GA
	170357	Crimp Die Body 20 GA
	170358	Crimp Die Body 28 GA
	170359	Crimp Die Body 410 Bore
51	170365	Case Flaring Sleeve 12 GA/20 GA
	170368	Case Flaring Sleeve 28 GA
	170369	Case Flaring Sleeve 410 Bore
52	170503	Left Toggle
53	170504	Right Toggle
54	170511	Driveshaft Bushings (2)
55	170512	Handle/Driveshaft Assembly
56	390064	10-32 X 1/8 Set Screw
57	390066	3/16 Push Nut
58	390079	10-32 X 5/8 Flat Hd Screw (2)
59	370251	1/2-20 Steel Hex Jam Nut (4)
60	390187	6-32 X 1/2 Slit Flat Hd Screw
61	490500	Crimp Starter 12 GA-8 Pt
	490501	Crimp Starter 12 GA-6 Pt
	490313	Crimp Starter 12 GA-Paper
	490503	Crimp Starter 20 GA-8 Pt
	490504	Crimp Starter 20 GA-6 Pt
	490319	Crimp Starter 20 GA-Paper
	490509	Crimp Starter 28 GA-6 Pt
	490321	Crimp Starter 28 GA-Paper
	490511	Crimp Starter 410 Bore-6 Pt
	490323	Crimp Starter 410 Bore-Paper
62	170470	Powder Drop Tube 10/12/20 GA
	170471	Powder Drop Tube 28 GA
	170472	Powder Drop Tube 410 GA
63	390640	Hitch Pin
64	170370	Shot Drop Tube 12/10 GA
	170371	Shot Drop Tube 20 GA
	170373	Shot Drop Tube 28 GA
	170372	Shot Drop Tube 410 Bore
65	370523	Primer Feed Cam Bar
66	370249	Groove Pin
<b>SHOT &amp; POWDER DROP ASSEMBLIES</b>		
67	370300	Shot Charge Bar Assembly
68	170304	Shot Hopper Tube
69	170305	Shot Hopper Cap
70	310123	Shot Measure Assy
71	310124	Powder Measure Assy
72	170344	Powder Bushing Cover
73	170345	Shot Bushing Cover
74	370400	Powder Charge Bar Assembly
75	170404	Powder Hopper Tube
76	170405	Powder Hopper Cap
77	170412	Powder Charge Bar Seal
78	480001	Shot Charge Bar Seal
79	390098	3/16 Plastic Drive Rivet (4)
80	170117	Collet Sizer Base
81	170118	Collet Sizer Plunger
82	170119	Collet Sizer Plunger Ret'n Spr'g
83	170210	Deprime Punch / Collet Sizer

KEY NO.	PART NO.	DESCRIPTION
84	170223	Ejector Spacer
85	170240	Size Die Body, 12 GA
	170242	Size Die Body, 20 GA
	170243	Size Die Body, 28 GA
	170244	Size Die Body, 410 Bore
86	170246	Size Die Lock Ring
87	390080	Crescent Ring
88	390081	E-Ring
89	170319	Crimp Die Cam
91	170341	Crimp Die Bracket (Upper)
92	170328	Crimp Die Bracket (Lower)
93	170360	Crimp Plunger 12 GA-Auto
	170362	Crimp Plunger 20 GA-Auto
	170363	Crimp Plunger 28 GA-Auto
	170364	Crimp Plunger 410 Bore-Auto
	310161	Bushing for 28/410 Crimp Plunger
95	390210	10-32 X 1 Cap Screw
96	390131	8-32 x 2 1/2 SHCS (2)
97	370309	Charge Bar Rod (2)
98	370258	1/8" x 1 1/2" Dowel Pin (2)
99	370311	Charge Bar Driver (2)
100	370250	9/16 x 18 Nut (2)
101	370257	Charge Bar Return Screw (2)
102	370310	Charge Bar Bearing (2)
103	370540	Upper Powder Cam
104	370545	Upper Shot Cam
105	370253	6-32 x 1/2 Cap Screw (4)
106	370541	Lower Powder Cam
107	370546	Lower Shot Cam
108	370530	Powder Actuator
109	370230	Powder Detect
110	370225	Shot Detect/Actuator
111	370312	Charge Bar Post (2)
112	370800	Indexer
113	170806	Indexer Retaining Clip
114	370700	Auto Primer Feed Assy
	170701	Primer Feed Cover
	170706	Primer Feed Upper Shaft
	170708	Primer Feed Lower Shaft
	170716	Primer Feed Spring
	370710	Primer Feed Housing Assembly
	390121	6 x 5/8 Screw (2)
	390192	3/8 Push Nut
	390411	O-Ring
115	170702	Primer Feed Ball Joint Shaft
116	390123	6-32 x 2 1/4" Machine Screw
117	370256	6-32 x 2 1/2" Machine Screw
118	070701	Primer Feed Cam Assy
119	170750NP	Primer Tube Filler Assy.
	390633	Primer Tube Filler Spring
	390634	10-32 x 3/8 Screw (4)
	480031	Fixed Lid
	480032	Moveable Lid
	480033	Rotor
<b>LOADER ACCESSORIES</b>		
120	170342	Spent Primer Catcher
	370425	Powder/Shot Drain Tube
	390036	5/32 Short Arm Hex Key
	390652	7/64 Short Arm Hex Key
	390653	1/8 Short Arm Hex Key
	390656	3/32 Short Arm Hex Key
	390670	Chip Brush
	380045	Hex Key

A - Powder Bushing  
B - Shot Bushing

For parts inquiries, call 1-800-338-3220